



Welcome to Napier 235

Napier 235 presents a collection of architecturally designed 2 and 3 bedroom Apartments, Penthouse and one exclusive Townhome.

Located in the heart of Fitzroy, 150 metres to Brunswick St and 2km from Melbourne CBD, 235 Napier is in prime location offering unparalleled convenience.

Each residence offers bespoke, customisable features, allowing you to tailor your living space to suit your individual style and needs.

- All north-facing
- Customisable interiors
- Legacy architecture
- Victoria's top 5% for sustainable developments





East Melbourne
1.4km

Fitzroy Townhall
130m

Melbourne CBD
2km

Carlton Gardens
1.3km

Nicholson St
2.5km

Docklands
5km

University
of Melbourne
2.3k

North
Melbourne
4km

Brunswick St
150m

Brunswick
5.8km

Fitzroy Gardens
1.3km

Gertrude St
900m

235

Collingwood
1.0km

Location

Townhome

Experience unparalleled contemporary living with Napier 235's townhome.

With only one available, this townhome has its own address and street frontage, exuding exclusivity and individuality. Welcome to a lifestyle of refined elegance and comfort, where every detail has been meticulously crafted to elevate your living experience to new heights.



Townhome - Kitchen - Light Scheme

Townhome

Feature floorplan

Configuration

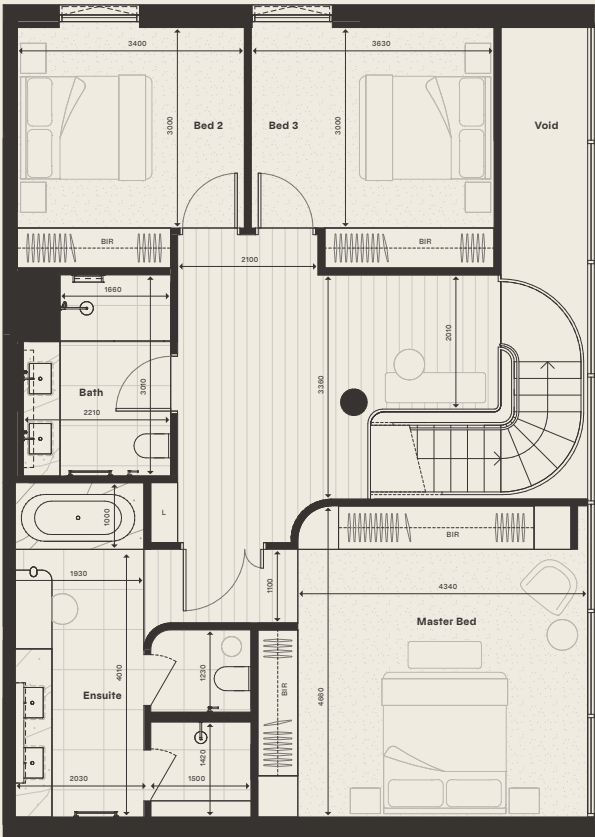
Bedrooms	3
Bathrooms	2.5
Study	1
Car Spaces	2

Key Features

- Private entrance from Napier Street
- Feature curved staircase
- Private ground level garden terrace views
- 5.35M full height & width glazed front facade
- Large walk-in pantry
- 6.8m Master bedroom built-in robe
- Large built-in bar with wine fridge
- Miele appliances
- Heated towel rails
- 100% wool carpets
- Selected natural stone



Ground



Upper Ground

This plan was prepared prior to construction of the project and is indicative only. Design changes, council approval and field survey may cause the floor area and design of the apartments to differ from these shown on the plan. The location of fixtures and fittings is subject to change without notice. Furniture is indicative only and is not included in the purchase price. This plan was prepared prior to construction of the project and dimensions are indicative only.



Apartments

Discover our spacious 2 and 3 bedroom apartments.

Boasting spacious layouts and generous sizes, these apartments are designed to provide ample room for living and entertaining. With a north-facing orientation, natural light floods the interiors, creating a bright and inviting atmosphere. Indulge in luxury finishes throughout, adding a touch of sophistication to every corner of your home.



Apartment - Kitchen - Light Scheme

2.02 - 3.02

Feature floorplan

Configuration	
Bedrooms	2
Bathrooms	2
Car Spaces	1

- Key Features
- Private north-facing terrace accessed from living and master bedroom
 - Floor-to-ceiling sliding doors to terrace
 - Miele appliances
 - North-facing bedrooms
 - Bespoke 3.5m long full-stone dining and kitchen island bench
 - 100% wool carpets
 - Selected natural stone



This plan was prepared prior to construction of the project and is indicative only. Design changes, council approval and field survey may cause the floor area and design of the apartments to differ from these shown on the plan. The location of fixtures and fittings is subject to change without notice. Furniture is indicative only and is not included in the purchase price. This plan was prepared prior to construction of the project and dimensions are indicative only.



1.03 - 3.03

Feature floorplan

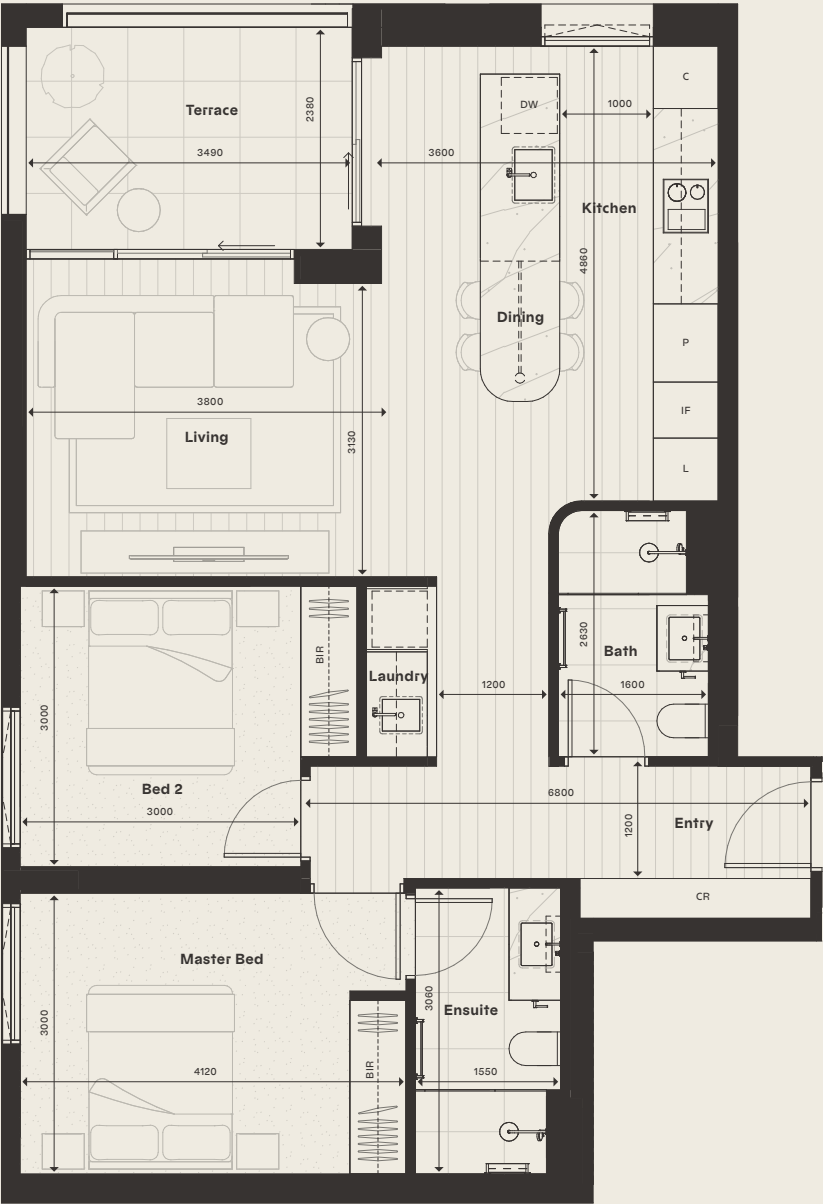
Configuration

Bedrooms	2
Bathrooms	2
Car Spaces	1

Key Features

- Private north-west facing terrace accessed from living and dining areas
- North-facing bedrooms
- Bespoke 3.5m long full-stone dining & kitchen island bench
- European Laundry
- Floor-to-ceiling sliding doors to terrace
- Miele appliances
- Bespoke entry joinery
- 100% wool carpets
- Selected natural stone

This plan was prepared prior to construction of the project and is indicative only. Design changes, council approval and field survey may cause the floor area and design of the apartments to differ from these shown on the plan. The location of fixtures and fittings is subject to change without notice. Furniture is indicative only and is not included in the purchase price. This plan was prepared prior to construction of the project and dimensions are indicative only.



1.01 - 3.01

Feature floorplan

Configuration	
Bedrooms	3
Bathrooms	2
Car Spaces	1

Key Features

- Private east-facing terrace accessed from dining area
- Treetop views to the East
- Large master ensuite with double vanity and steel frame shower and toilet doors
- Large WIR
- Built-in bar with wine fridge
- Large laundry room
- Miele appliances
- 100% wool carpets
- Selected natural stone

This plan was prepared prior to construction of the project and is indicative only. Design changes, council approval and field survey may cause the floor area and design of the apartments to differ from these shown on the plan. The location of fixtures and fittings is subject to change without notice. Furniture is indicative only and is not included in the purchase price. This plan was prepared prior to construction of the project and dimensions are indicative only.

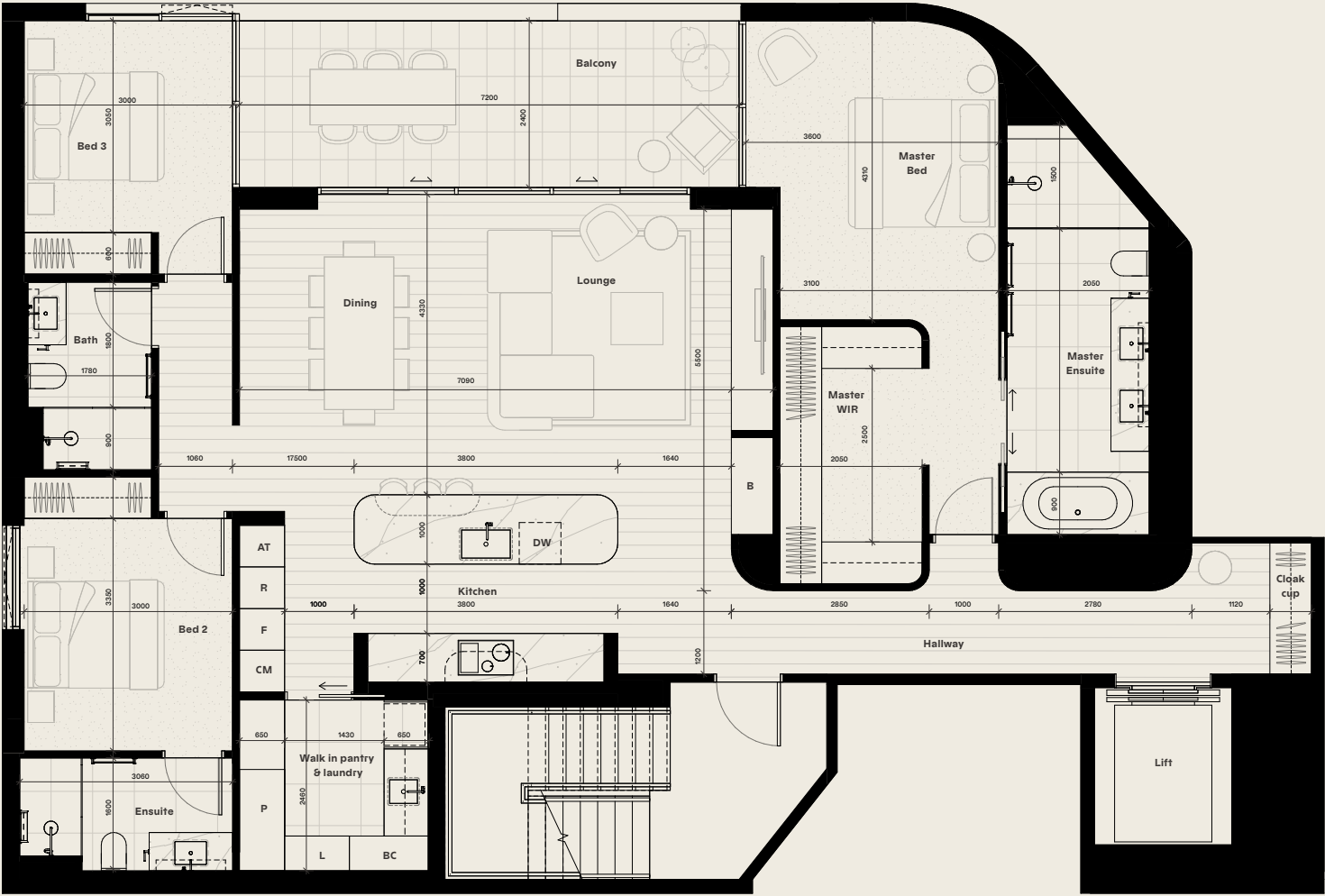


Residence 1

Feature floorplan

Configuration	
Bedrooms	3
Bathrooms	3
Car Spaces	2

- Key Features
- Miele appliances including: 80cm Induction cooktop, microwave with oven and coffee machine
 - Liebherr integrated fridge and freezer
 - Vintec 50 bottle wine fridge
 - Private lift entrance
 - Private entry lobby and hallway
 - Private north-facing terrace
 - Large walk-in pantry



This plan was prepared prior to construction of the project and is indicative only. Design changes, council approval and field survey may cause the floor area and design of the apartments to differ from these shown on the plan. The location of fixtures and fittings is subject to change without notice. Furniture is indicative only and is not included in the purchase price. This plan was prepared prior to construction of the project and dimensions are indicative only.



Penthouse

Experience the epitome of luxury living in our prestigious penthouse at Napier 235.

Step into your sanctuary via a private lift entrance, where panoramic north-facing views spanning 180 degrees greet you, bathing the interiors in natural light. With an expansive house-sized layout and positioned atop the building, the penthouse will redefine the standard of upscale urban living.



Penthouse - Kitchen - Light Scheme

The Penthouse

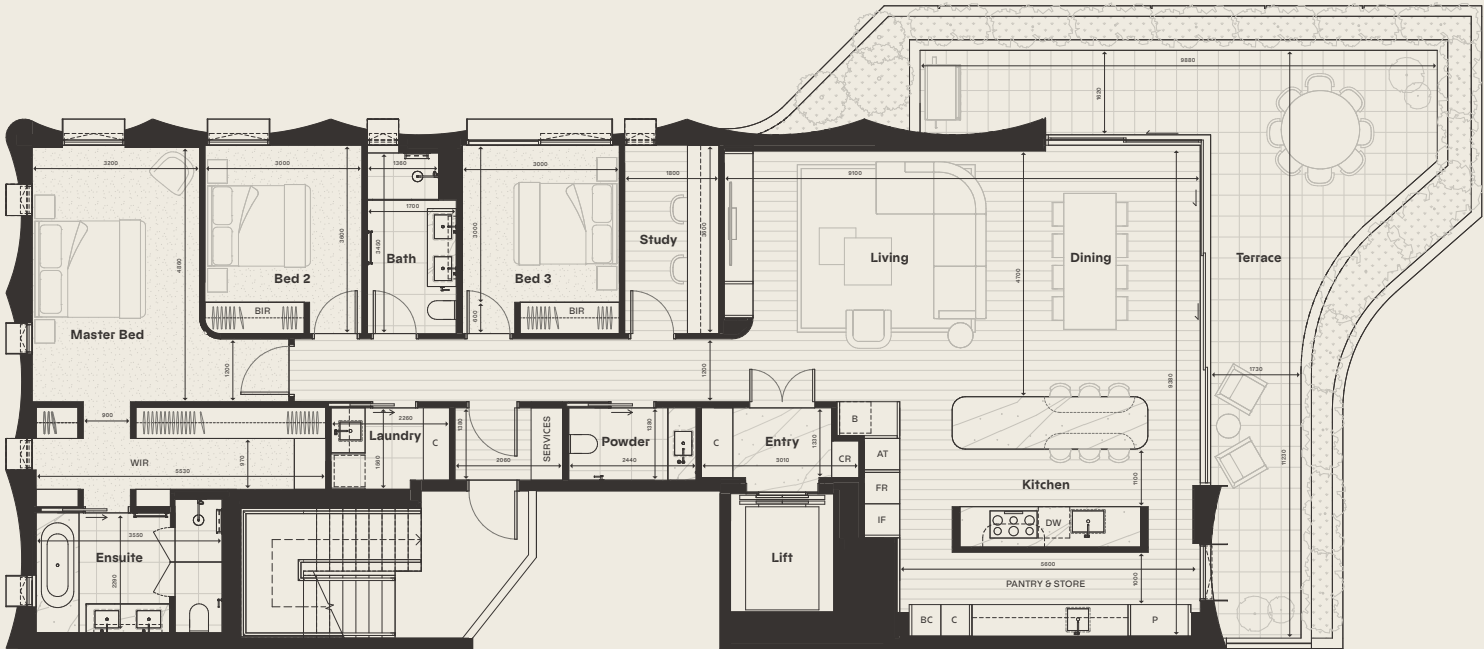
Feature floorplan

Configuration

Bedrooms	3
Bathrooms	2.5
Study	1
Car Spaces	3

Key Features

- Private entry from lift
- Full-floor penthouse
- North facing bedrooms and study areas
- Oversized master WIR
- Large master ensuite with undermount stone bath and steel frame shower and toilet doors
- Study area with built-in joinery
- 3.75m long full-stone kitchen island bench
- Large walk-in butler’s pantry
- Built-in bar with wine fridge
- Gaggenau appliances
- Large private terrace off living & dining



This plan was prepared prior to construction of the project and is indicative only. Design changes, council approval and field survey may cause the floor area and design of the apartments to differ from these shown on the plan. The location of fixtures and fittings is subject to change without notice. Furniture is indicative only and is not included in the purchase price. This plan was prepared prior to construction of the project and dimensions are indicative only.

North



Visit us

Book an appointment to receive more information about offers, fixtures & finishes, upgrades, and more.

Display Gallery

245 Brunswick St,
Fitzroy VIC 3065

For more information contact

Maurice Romano
Developer
0423 009 920

Development by

RPG romano
property
group

Architecture & Interiors by

E W E R T —
— **L E A F**

Landscaping by

FLORIAN WID

Sales by

RPG project
sales

While all reasonable care has been taken in the preparation of this brochure and the particulars contained here in, it is intended to be a visual aid and does not necessarily depict the finished state of the property or object shown. No liability whatsoever is accepted for any direct or indirect loss or consequential loss or damage arising in any way out of any reliance upon this brochure. Purchasers must rely upon their own enquiries and inspections. Furniture is not included with the property. Dimensions and specifications are subject to change without notice. Illustrations and photographs are for presentation purposes and are to be regarded as indicative only. This brochure does not form part of, and is not, an offer or a contract of sale.