

---

JD

---

# FIELDS

---

& COMPANY, INC.

---

A FIELDS COMPANY



# TUBULAR LINE PIPE SOLUTIONS

**YOUR STRATEGIC SOURCING PARTNER FOR LINE PIPE NEEDS**

<b>About JD Fields &amp; Company, Inc.</b>	<b>3</b>
<b>Pipe Specifications</b>	<b>4</b>
<b>Line Pipe Offerings</b>	<b>5</b>
<b>Logistic Capabilities</b>	<b>6</b>
<b>In-House Trading Capabilities</b>	<b>7</b>
<b>Corrosion Defense Systems</b>	<b>8</b>
<b>Applications</b>	<b>9</b>
<b>Project Highlights</b>	<b>10</b>



2727 Allen Parkway, Suite 2000 | Houston, Texas 77019  
(281) 558-7199 | [www.jdfields.com](http://www.jdfields.com)

# ABOUT JD FIELDS & COMPANY, INC.

## API LINE PIPE DIVISION

JD Fields, a Houston, Texas based, family-owned business, has been delivering trusted steel solutions to the oil & gas, midstream, utility, and renewable energy markets since our inception in 1985. With a strong reputation for reliability, we provide API-certified carbon steel welded and seamless pipe to meet the demanding needs of infrastructure projects worldwide.

- 150,000 tons of premium steel in stock
- ERW, DSAW, and Seamless (2" - 72")
- Import and Domestic offerings to meet stringent AML requirements



# PIPE SPECIFICATIONS

## UNMATCHED INVENTORY

- Carbon steel API products to meet stringent specifications, supporting applications in pipelines, refineries, and offshore projects
- All material is backed with proper inspection and reporting including, but not limited to, Mill Test Reports (MTRs)
- 10" and above inventory produced with -50°F Charpy V-notch (CVN)

## MATERIAL OFFERINGS

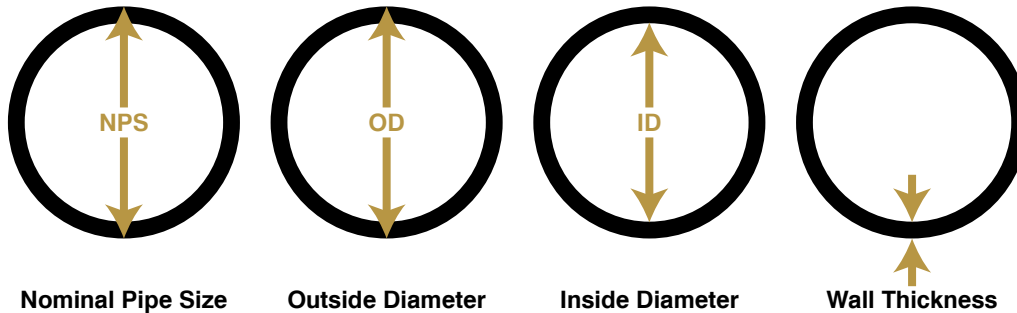
Category	OD Range	Wall Thickness	Origin	Grades & Specs
DSAW (LSAW / HSAW)	20"-72"	0.375"-2.000"	Domestic & Import	API 5L GrB-X70, ASTM A572 Gr50-Gr70
ERW	2"-26"	0.154"-1.000"	Domestic & Import	API 5L GrB-X70, ASTM A53B
Seamless	2"-24"	0.237"-1.500"	Domestic & Import	API 5L GrB-X65, ASTM A106 B/C, A333 Gr6

## SOME OF OUR MANUFACTURING PARTNERS



# LINE PIPE OFFERINGS

## TUBULAR PRODUCTS



Nominal Pipe Size

Outside Diameter

Inside Diameter

Wall Thickness

Size	Schedule 10		Schedule 20		Schedule 30		Standard (P.E.)		Schedule 40		Schedule 60		Extra Strong		Schedule 80		Schedule 100		Schedule 120		Schedule 140		Schedule 160		XX Strong			
	O.D.	Wall	Lbs/Ft	Wall	Lbs/Ft	Wall	Lbs/Ft	Wall	Lbs/Ft	Wall	Lbs/Ft	Wall	Lbs/Ft	Wall	Lbs/Ft	Wall	Lbs/Ft	Wall	Lbs/Ft	Wall	Lbs/Ft	Wall	Lbs/Ft	Wall	Lbs/Ft	Wall	Lbs/Ft	
2"	2.375						0.154	3.66	0.154	3.66			0.218	5.03	0.218	5.03							0.344	7.47	0.436	9.04		
4"	4.500						0.237	10.80	0.237	10.80			0.337	15.00	0.337	15.00			0.438	19.02			0.531	22.53	0.674	27.57		
6"	6.625						0.280	18.99	0.280	18.99			0.432	28.60	0.432	28.60			0.562	36.43			0.719	45.39	0.864	53.21		
8"	8.625			0.250	22.38	0.277	24.72	0.322	28.58	0.322	28.58	0.406	35.67	0.500	43.43	0.500	43.43	0.594	51.00	0.719	60.77	0.812	67.82	0.906	74.76	0.875	72.49	
10"	10.750			0.250	28.06	0.307	34.27	0.365	40.52	0.365	40.52	0.500	54.79	0.500	54.79	0.594	64.49	0.719	77.10	0.844	89.38	1.000	104.2	1.125	115.75	1.000	104.23	
12"	12.750			0.250	33.41	0.330	43.81	0.375	49.61	0.406	53.57	0.562	73.22	0.500	65.48	0.688	88.71	0.844	107.42	1.000	125.61	1.125	139.8	1.312	160.42	1.000	125.61	
14"	14.000	0.250	36.75	0.312	45.65	0.375	54.62	0.375	54.62	0.438	63.50	0.594	85.13	0.500	72.16	0.750	106.23	0.938	130.98	1.094	150.93	1.250	170.4	1.406	189.29			
16"	16.000	0.250	42.09	0.312	52.32	0.375	62.64	0.375	62.64	0.500	82.85	0.656	107.60	0.500	82.85	0.844	136.74	1.031	164.98	1.219	192.61	1.438	223.9	1.594	245.48			
18"	18.000	0.250	47.44	0.312	58.99	0.438	82.23	0.375	70.65	0.562	104.76	0.750	138.30	0.500	93.54	0.938	171.08	1.156	208.15	1.375	244.37	1.562	274.5	1.781	308.79			
20"	20.000	0.250	52.78	0.375	78.67	0.500	104.23	0.375	78.67	0.594	123.23	0.812	166.56	0.500	104.23	1.031	209.06	1.281	256.34	1.500	296.65	1.750	341.4	1.969	379.53			
22"	22.000	0.250	58.13	0.375	86.69	0.500	114.92	0.375	86.69			0.875	197.60	0.500	114.92	1.125	251.05	1.375	303.16	1.625	353.94	1.875	403.4	2.125	451.49			
24"	24.000	0.250	63.47	0.375	94.71	0.562	140.81	0.375	94.71	0.688	171.45	0.969	238.57	0.500	125.61	1.219	296.86	1.531	367.74	1.812	429.79	2.062	483.6	2.344	542.64			
26"	26.000	0.312	85.68	0.500	136.30			0.375	102.72				0.500	136.30														
28"	28.000	0.312	92.35	0.500	146.99	0.625	182.90	0.375	110.74				0.500	146.99														
30"	30.000	0.312	99.02	0.500	157.68	0.625	196.26	0.375	118.76				0.500	157.68														
32"	32.000	0.312	105.69	0.500	168.37	0.625	209.62	0.375	126.78	0.688	230.29		0.500	168.37														
34"	34.000	0.312	112.36	0.500	179.06	0.625	222.99	0.375	134.79	0.688	245.00		0.500	179.06														
36"	36.000	0.312	119.03	0.500	189.75	0.625	236.35	0.375	142.81	0.750	282.62		0.500	189.75														
42"								0.375	166.86				0.500	221.82														
48"								0.375	190.92				0.500	253.89														
54"								0.375	214.97				0.500	285.96														
60"								0.375	239.02				0.500	318.03														
72"								0.375	287.13				0.500	382.17														

### Conversion Calculations:

**Pipe Weight per Foot = (OD – WT) x WT x 10.69**

**\$/NetTon to \$/LF = (\$ per ton / 2000) x (pipe weight per foot)**

**\$/LF to \$/NetTon = (\$ per foot / pipe weight per foot) x 2000**

# LOGISTIC CAPABILITIES

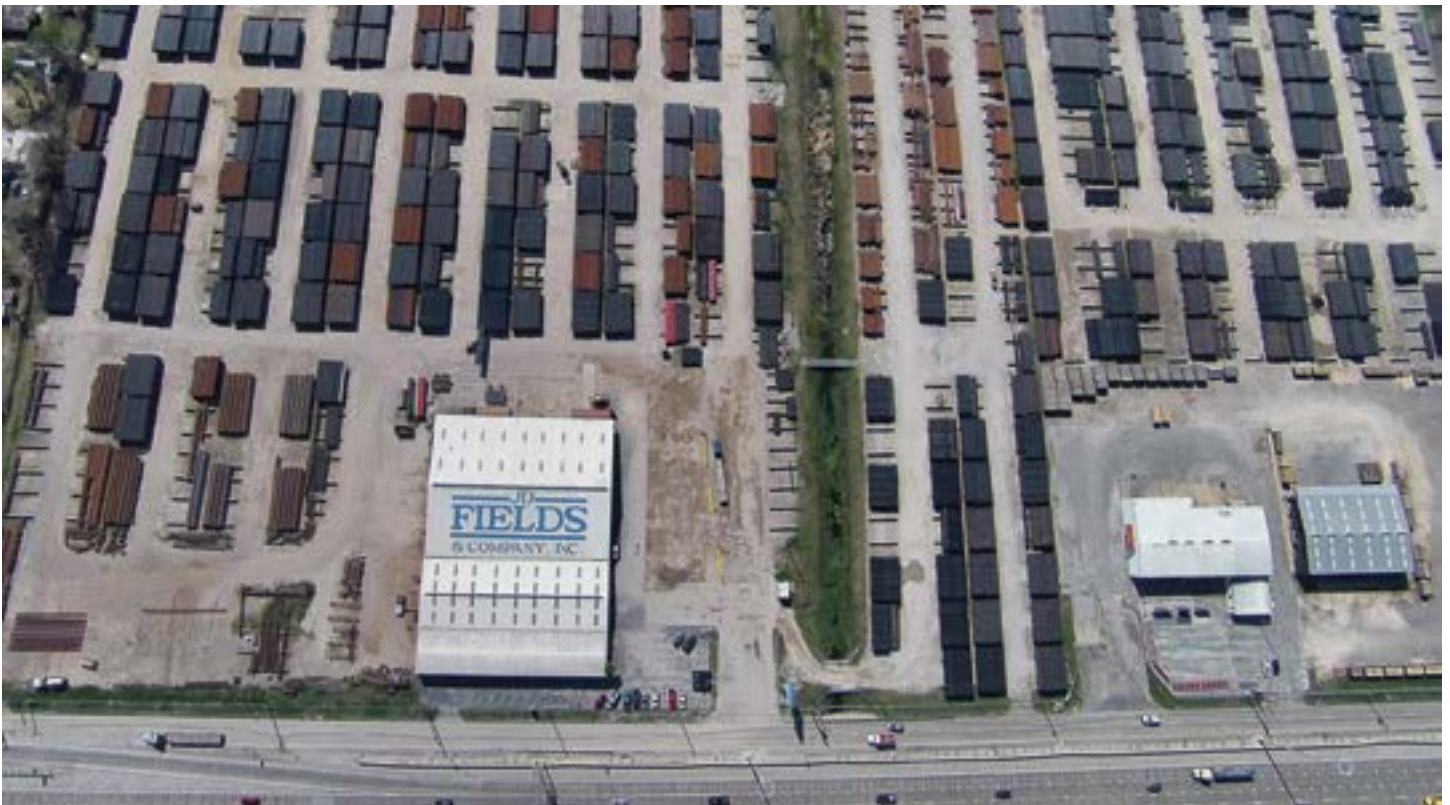
## YARD & STORAGE

JD Fields, in partnership with Houston Tubular Inc., delivers enhanced customer value through custom yard services, advanced capabilities, and dedicated inspection.

- **Yard Services:** Comprehensive solutions including loading/offloading, inspection, beveling, cutting, splicing, blasting, and mill lacquer application.
- **Testing:** Immediate access to heat-specific pipe with die stamping or laser stenciling, plus advanced non-destructive testing (UT and 100% X-Ray).
- **Inspection:** Certified NACE Level III inspectors, ISO 17029 and ISO 9001 compliance, and final bench inspections ensure the highest quality standards.
- **Efficiency:** A dedicated “No Wait” truck lane and crew streamline loadouts, minimize downtime, and maximize efficiency.
- **Stringing:** On-demand stringing trucks delivered directly to the right of way (ROW) anywhere in the United States.

## BONDED WAREHOUSE & FREE TRADE ZONE

JD Fields owns and maintains a secured 20-acre bonded and free trade zone facility designed for imported steel products. Dutiable goods can be stored, held, or undergo third-party operations without payment of duty, delivering cost savings, compliance, and flexibility for our customers.



# IN-HOUSE TRADING CAPABILITIES

## SIXGEN TRADING COMPANY | A FIELDS COMPANY

As the internal trading arm of JD Fields, SIXGEN Trading LLC leverages global mill relationships and logistics expertise to deliver reliable steel solutions for energy and infrastructure markets.

### Key contributions:

- **Global Sourcing:** A worldwide network of trusted steel mills across the U.S., Europe, Asia, and beyond provides API and ASTM compliant line pipe, including specialized grades for sour service.
- **Supply Chain Efficiency:** Proven trading and logistics expertise ensures streamlined procurement and a steady inventory of 150,000+ tons of steel (2"-72" OD) across multiple grades and lengths.
- **Custom Clearance & Importation Duties Management**
- **Market Reach:** Strong mill partnerships secure competitive pricing and dependable supply chains to support major oil & gas, water transmission, and infrastructure projects.



# CORROSION DEFENSE SYSTEMS

## **FUSION BOND EPOXY (FBE)**

FBE is the industry standard for external corrosion protection. Applied as a 14-16 mil thermal powder coating, it bonds directly to the steel surface to create a durable barrier that prevents corrosion, ensures long-term pipeline integrity, and reduces maintenance costs.

## **ABRASION RESISTANT OVERLAY (ARO)**

ARO is a reinforced topcoat applied over FBE to protect against mechanical damage during challenging installations such as directional drilling, road and river crossings, and rocky terrains. By resisting gouging, abrasion, and impact, ARO safeguards pipelines where standard coatings alone would be vulnerable.

## **INTERNAL LININGS (FLOWLINER)**

Internal FBE linings create a smooth, chemically resistant surface inside the pipe. This not only protects against internal corrosion from water, CO<sub>2</sub>, H<sub>2</sub>S, and other corrosive media while also reducing friction, improving flow efficiency, and extending the overall service life of the pipeline.

## **ABOVE-GROUND COATING SYSTEMS**

Pipes installed above ground face constant exposure to UV, moisture, and chemicals. Specialized multi-layer paint and coating systems provide critical protection against environmental degradation, ensuring long-term durability and operator safety in exposed environments.



# APPLICATIONS

## **OIL & GAS TRANSMISSION**

Available in ERW, DSAW, and seamless, our products are manufactured to meet the most stringent API specifications, ensuring safety, reliability, and long-term performance in critical transmission projects.

## **WATER WELL & DOWNHOLE APPLICATIONS**

- Conductor Casing
- Rathole / Mousehole Pipe
- Surface Casing
- Pump Column Pipe

## **WATER TREATMENT & TRANSMISSION**

We offer spiral-welded pipe to AWWA C-200 standards, engineered for water treatment and transmission systems. Custom bends are matched and marked to your project specifications, with all pipe supplied to ASTM, API, and AWWA standards and backed by certified mill test reports with traceable heat numbers.



# PROJECT HIGHLIGHTS

## **2024:**

### ***48" x 1.00" wall, Grade X70***

JD Fields is proud to have supplied line pipe for one of the largest slug catchers in the U.S., a key midstream facility that captures liquid slugs in gas pipelines to protect downstream equipment and ensure safe, efficient processing. Handling over 500–1,000 MMSCFD of gas and 11,000–14,000 BPD of liquids, this installation plays a vital role in maintaining flow stability and supporting reliable energy infrastructure.

## **2024:**

### ***550,000 feet of 6.625" x 0.280" wall, Grade X52, FBE 14–16 mil | 4.5" x 0.237" wall, Grade X52, FBE 14–16 mil***

Over 10 miles of 6.625" and 4.5" line pipe were supplied to connect 30+ wells in a key production zone. These smaller lines gather crude from well sites and feed larger pipelines bound for La Porte, Texas, a vital Gulf Coast hub. JD Fields supports reliable flow from wellhead to refinery.

## **2024-2025:**

### ***26 miles of 42" x 1.04" Grade X70 | 48" x 1.90" Grade X70 | 42" x 1.25" Grade X70***

JD Fields has proven success acting as an agent on mill productions for major infrastructure projects. For this project, it was designed to transport up to 4.5 billion cubic feet per day of natural gas from the Agua Dulce supply hub to the Rio Grande LNG export terminal in Brownsville (Port of Brownsville), South Texas. It will supply 100% of the natural gas needs of the Rio Grande LNG export facility, enabling the terminal to export liquefied natural gas (LNG) globally while delivering economic benefits regionally and nationally.

## **2025-2026:**

### ***72 miles of 36" x 0.465" wall X65 FBE 14/16 Quads API 5L Grade X70***

36" OD trunkline designed to ease a key bottleneck in natural gas infrastructure. It will efficiently move gas from regional gathering systems to Houston-area hubs, improving flow, reducing congestion, and supporting growing demand along a major U.S. energy corridor. Permitted truckloads: 1,470.

## **2025-2026:**

### ***Phase 1 of the world's largest next-generation geothermal development***

JD Fields is proud to have supplied 24" x 0.562" ASTM A53B gathering pipe and custom engineered strainers for Phase 1 of the world's largest next-generation geothermal development in Southwest Utah. Working in close collaboration with the end-user and their engineering partner, Phase 1 is scheduled to begin delivering power to the grid in early 2026. All materials were of domestic origin, ensuring compliance with Federal funding requirements. JD Fields delivered all products on or ahead of schedule, helping the project stay on track with its aggressive buildout timeline.



JD  
**FIELDS**  
— & COMPANY, INC. —  
A FIELDS COMPANY

2727 Allen Parkway, Suite 2000 | Houston, Texas 77019  
(281) 558-7199 | [www.jdfields.com](http://www.jdfields.com)

