

# SEGAMU 14 Consults Ltd.



## COMPANY PROFILE

Engineering & Planning,  
Environmental & Social Safeguards,  
Water & Sanitation

## Table of Contents

<b>1.0 Introduction .....</b>	<b>3</b>
1.1 Our History.....	3
1.2 Company Values .....	3
1.3 Company Objectives .....	4
1.3.1 Our Mission .....	4
1.3.2 Our Vision .....	4
1.3.3 Our Motto .....	4
1.3.4 Core Values.....	4
<b>2.0 Departments.....</b>	<b>5</b>
2.1 Engineering & Planning .....	5
2.2 Environmental & Social Safeguards .....	6
2.3 Water Suppply, Transmission & Sanitation.....	7
<b>3.0 Organisational Structure .....</b>	<b>9</b>
<b>4.0 Our Work .....</b>	<b>10</b>
<b>5.0 Our Clients .....</b>	<b>12</b>
<b>6.0 Location and Contacts.....</b>	<b>13</b>

# 1. Introduction

**Segamu 14 Consults Limited** was incorporated and registered as a limited liability company in Uganda in 2015 and it has been fully licensed for the current year with a Trading License, Tax Clearance PPDA, VAT and Tax Identification Number (attached), with core business of:



1. Engineering & Planning (Design, Supervision, Tender Assistance, Monitoring & Evaluation, Among Others) in Highways/Roads, Water Works, Buildings, and Electricity Transmission)



2. Environmental and Social Safeguards (Environmental & Social Impact Assessments, Environmental Audits, Environmental Monitoring & Compliance, Resettlement Action Planning & Implementation, HIV/AIDS Awareness & Sensitization Services, among others)



3. Water Supply, Transmission & Sanitation; (Feasibility Study, Detailed Engineering Design, Design Reviews and Construction Supervision)

Our consultancy service delivery is the quickest plus our goods which we supply meet the standards required, while at the same considering Occupational Safety & Health in all our operations.

We do recognize international standards organizations including but not limited to ISO 9000, ISO 9001, ISO 9002 and ISO 14001

## 1.1. Our History

**Segamu 14 Consults Limited** started operations with a common purpose of bridging the gap between our Clients, Lead Agencies, Manufacturers, Suppliers and End-Users having been started by individuals with vast experience totaling to more than 20 years of collective personnel experience in Engineering, Environmental & Social Safeguard, and Water Supply & Transmission.

To date, we have a fully registered limited company that is organized into several specialized units to efficiently meet unique customer needs. We currently employ specialized individuals to meet customer requirements in a time conscious manner with quality assurance as a principal value.

## 1.2. Company Values

- **Segamu 14 Team** builds lasting relationships with its clients. Our customer-focused business model dictates that we understand the challenges our clients face in their day-to-day business operations.
- We demand both individual and collective excellence in all aspects of our business operations, thus ensuring consistency and efficiency in accordance with our Team vision.
- We aim constantly to add value to our clients' requirements and goals through the utilization of our Team's experience, focus and dedication.
- The company emphasizes team work as a way of fulfilling tasks. In this case work will be done in teams at various levels

### 1.3. Company Objectives

**Segamu 14 Consults Ltd** is a private company which was established with the following core objectives as stated in our Memorandum and Articles of Association;

- To offer consultancy services in Engineering & Planning (Design, Supervision, Tender Assistance, Monitoring & Evaluation, Among Others) in Highways/Roads, Water Works, Buildings, and Electricity Transmission)
- Environmental and Social Safeguards (Environmental & Social Impact Assessments, Environmental Audits, Environmental Monitoring & Compliance, Resettlement Action Planning & Implementation, HIV/AIDS Awareness & Sensitization Services, among others)
- Water Supply, Transmission & Sanitation (Feasibility Study, Detailed Engineering Design, Design Reviews and Construction Supervision)

#### 1.3.1. Our Mission

*“To enable individuals, organizations and businesses worldwide realize their full potential by ensuring a fast, streamlined, efficient and effective services”*

#### 1.3.2. Our Vision

*To provide services that consistently meet our clients’ expectations and our competitors’ capabilities while continuously improving delivery processes.*

#### 1.3.3. Our Motto

*Here to Deliver*



#### 1.3.4. Core Values

- **Commitment to Excellence:** Our passion to be a true destination partner and service provider is our pledge, along with our assurance of flawless performance from our highly professional staff who will meet, understand and execute your vision promptly and efficiently.
- **Commitment to our customers:** We believe the customer always comes first, hence it's our major objective to strive for conformance of products and standards with deliveries made in ample time to promote consistence and efficiency on the customer's side.
- **Business values and Ethics:** We aim to constantly add value to our requirements, needs and expectations through the proposing and implementation of creative cutting-edge solutions to various business needs, constantly adjusting to the changing faces of consultancy in Environmental related issues, Supplies and General Construction

## 2.0 Departments

Segamu 14 Consults is composed of 3 departments, i.e

### 2.1 Engineering & Planning Department

- A range of consultancy services are offered in the following areas:
- Roads and Bridges Engineering
- Water Engineering
- Building Engineering
- Geo-technical Engineering
- Contract Package Preparation
- Environmental Impact Assessments
- Feasibility study
- Traffic Engineering
- Assistance during Tender Process
- Construction Supervision
- Civil works Construction
- Electromechanical Works



#### 2.1.1 Engineering Design Division

- Feasibility studies
- Detail design of new Roads/upgrading
- Detail design of Existing Roads/Rehabilitation and Maintenance
- Water Supply, Transmission & sewerage systems
- Building Design
- Architectural, Structural, electrical and sanitary
- Traffic engineering
- Transportation management
- Aerial photography
- Photogrammetric evaluation
- Route selection
- Detailed ground survey.
- Tender document preparation Evaluation of Bids
- Socioeconomic studies
- Environmental and Social Impact Assessment



## 2.1.2 Construction Supervision Division

- Tender documents & Contract agreements Preparation
- Organize, supervise and direct supervision crew
- Supervise and follow up the progress of projects
- Prepare and submit to the Client
- Monthly, Quarterly & Annual reports
- Prepare and submit to the Client
- Inception, Mobilization, Contract Completion & Consultancy Completion Reports
- Certify the Contractors payment certificates
- Make correspondence with the Client & Contractor on the project matters
- Approve the Contractor's work programmes i.e. equipment, Material & man power
- Review and analyse the contractor's claims
- Prepare variation orders & supplementary agreements
- Conduct provisional and Final acceptance for completed projects and issue Completion Certificates



## 2.2 Environmental & Social Safeguards Department

Environmental and Social Safeguards (Environmental & Social Impact Assessments, Environmental Audits, Environmental Monitoring & Compliance, Resettlement Action Planning & Implementation, HIV/AIDS Awareness & Sensitisation Services, among others)



## 2.2.1 Environmental Impact Assessment

- Environmental impact assessment
- Restoration planning and Implementation
- Environmental Audit
- Environmental Management and Monitoring/Compliance
- Occupational Health and Safety Management Planning
- Strategic Environmental Assessment

## 2.2.2 Social Safeguards

- Social Impact Assessment
- Resettlement Action Planning and Implementation
- HIV/AIDS Awareness and Sensitisation
- Community Engagements



## 2.3 Water & Sanitation Department

- Feasibility Study, Detailed Engineering Design, Design Reviews and Construction Supervision
  - Water Transmission Mains
  - Water Distribution System
  - Booster Pumping Station Design
  - Water Storage Tank Design/Rehabilitation
  - Telemetry/Process Control System Design
  - Metering Vault Design
  - Remote Disinfection Facilities
  - Fire Protection Storage & Distribution Systems
  - Hydraulic Modelling
  - Water Quality Modelling
  - Permitting & Regulatory Compliance
  - Water Treatment Plant of any capacity
  - Design of reservoirs of any capacity



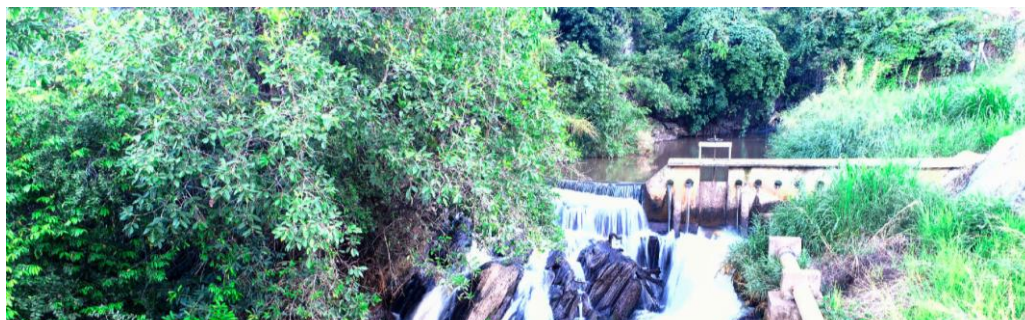
### 2.3.1 Comprehensive Planning

- Source Development Studies & Investigations
- Unaccounted for Water Studies
- Water Distribution System Master Planning Studies
- Water Treatment Feasibility Study
- Permitting Capacity Studies
- Hydrogeological Studies
- Wellhead Protection Plans
- Water Treatment Residuals Handling & Disposal Alternatives
- Treatment Optimization Studies
- Third Party/Second Opinion Reviews
- Water Treatment/Distribution System Upgrade & Expansion Studies
- Capital Improvement Planning
- Rate Studies
- Funding Studies/Loan & Grant Applications



### 2.3.2 Treatment Facilities

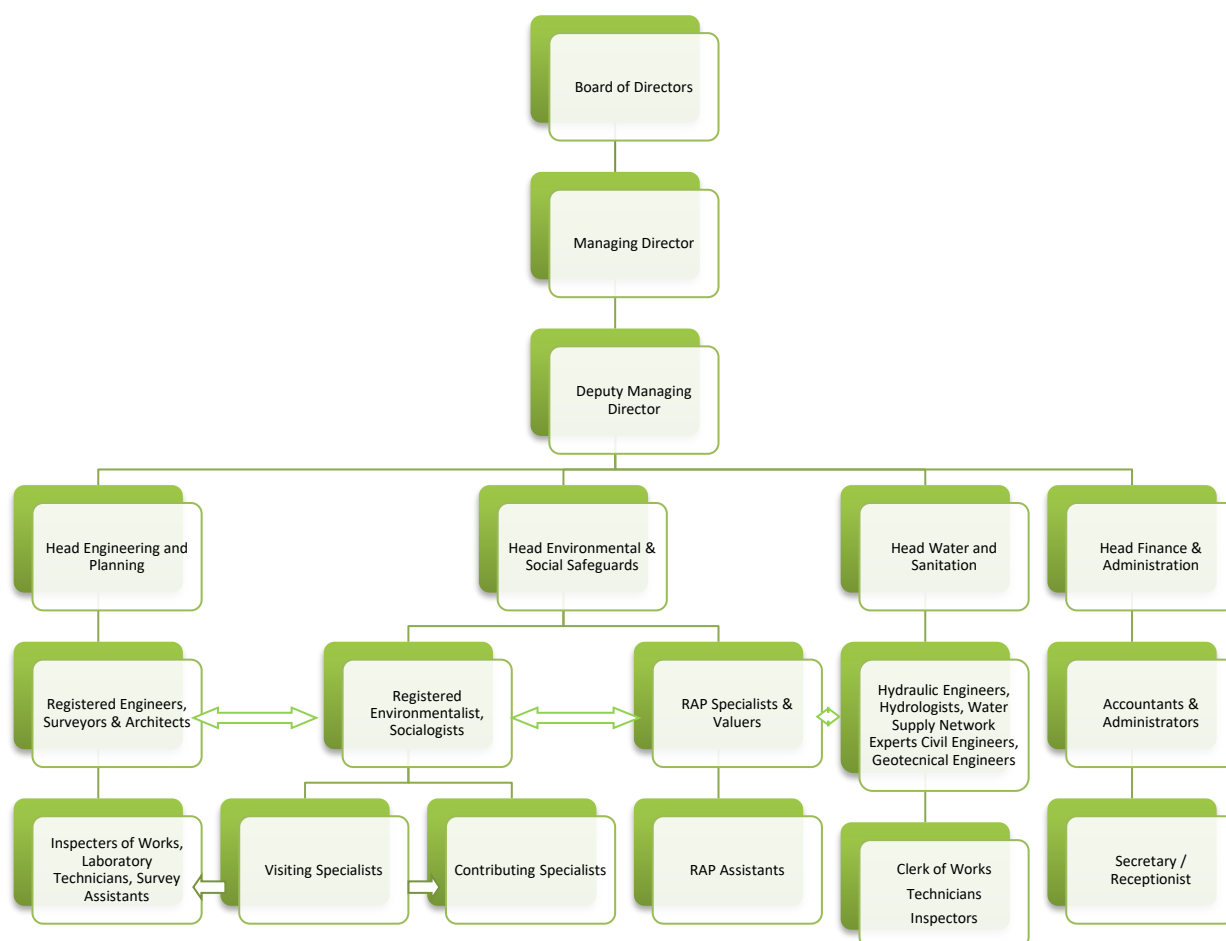
- New Water Treatment Plant Design
- Water Treatment Plant Expansion/Modifications
- Process Design, Evaluation, & Optimization
- Water Treatment Resources Handling & Disposal Facilities Design
- Permitting & Regulatory Compliance
- Pilot Testing
- Membrane Filtration Systems
- Advanced & Specialized Treatment Systems
- Process Control/SCADA System Design
- Energy Conservation



### 3.0 Organisational Structure

**Segamu 14 Consults Ltd** is endowed with a team of qualified men and women of distinguished achievement with a wealthy of experience.

The organisation of the **Segamu 14 Consults Ltd** is shown below;



## 4.0. Our Work

No.	Name of Employer	Description of Contracts
1.	Uganda National Roads Authority	Consultancy Services for the Construction Supervision of the Rehabilitation of Nebbi – Alwii road (33.25) and 4 Km Pakwach and Nebbi Town roads.
2.	Uganda National Roads Authority	Consultancy Services for Construction Supervision of the Design and Build Contract of Kisoro-Rubuguri-Muko/Nteko (72km)
3.	Uganda National Roads Authority	Feasibility Study and Detailed Engineering Design of Lugazi - Buikwe – Kiyindi Road (28km, Kirongo Ferry Landing -Kulwe/Buvuma District Headquarters (21.5km) including Ferry Landing Sites at Kiyindi and Kirongo, and Buikwe-Nyenga Road (15km), and 8km of Roads in Lugazi, Buikwe, Kiyindi and Najja Towns from Gravel to Bituminous Standard
4.	Sharjah Chamber of Commerce and Industry	Provision of Consultancy Services to Carryout A Masterplan for Kidepo Airport and Associated Design Studies for Landside facilities including Passenger Terminal Building, Aircraft Fire Fighting facility, Air Control Tower, Runway, Runway Shoulder, Taxiway, Apron, Generator House, Pump House, Fencing among others
5.	Uganda National Roads Authority	Consultancy Services for Design (Architectural and Engineering) and Construction Supervision of the UNRA Headquarter Building
6.	Uganda Investment Authority	Consultancy Services to Undertake Feasibility Study for The Development of Critical Infrastructure for Kisoro Industrial and Business Park
7.	Uganda Investment Authority	Consultancy Services to Undertake Feasibility Study for The Development of Critical Infrastructure for Jinja Industrial and Business Park
8.	Ministry of Water and Environment Headquarters	Non- Consultancy Services for Supporting Communities in Micro-Catchments Around Kabuyanda Irrigation Scheme to Implement Wetland and Riverbank Restoration Measures (Lot 2)
9.	Entebbe Municipal Council	Construction Services for Engineering Supervision of Construction and Upgrade of Selected Roads in Entebbe and Makindye Ssabagabo Municipalities Lot 3: Reconstruction of Kitooro-Kiwafu-Nakiwogo Road (4.3km) <b>(Funded by World Bank)</b>
10.	Makindye Ssabagabo Municipal Council	Construction Services for Engineering Supervision of Construction and Upgrade of Selected Roads in Makindye Ssabagabo Municipality. LOT 1: Lubugumu-Busabala Link 1 (2.30Km), Lubugumu-Busabala Link 2 (1.20Km), Lubugumu-Busabala Link 3 (0.50Km), Lubugumu-Kakora (1.00Km), LOT 2: Kibutika Road (2.90Km), Kibutika Road 2/ Municipal Road (1.00Km), Namasuba Para Link (0.60Km), Nakayenga Road (0.60Km). Total Length: 10.1 km <b>(Funded by World Bank)</b>
11.	Nansana Municipal Council	Provision of Consultancy Services for Engineering Supervision of Construction and Upgrade of Selected Roads in Nansana Municipal Council LOT 4: Upgrading of Nansana Wamala Katoke (4.870km) and Maganjo Kaloori Link (1.109 km) LOT 5: Upgrading of Nansana Nabweeru (1.66km), New Era Nabweeru Katooke Link (2.70km), New Era Nabweeru Lugoba (0.80km), Nabweeru Kazo Central Link (1.60km) Total Project Length: 12.739 km <b>(Funded by World Bank)</b>
12.	Lira City Council	Consultancy services for the Design Review and Construction Supervision of Works for Infrastructure Subprojects in Lira City (7 Roads, Coronation Park and Adyel's Children's Park) under USMID–AF Infrastructure Investment Program. <b>(Funded by World Bank)</b>
13.	Gulu City Council	Consultancy Services for Design Review and Construction Supervision for selected Infrastructure sub projects in Cluster 1-Gulu City Council under the USMID-AF Project Alur Rd, Okello Okeno Rd, Queen Elizabeth Rd, Eden Rd, Samuel Rd and Samuel Rd (Total length 4.834km). <b>funded by the World Bank</b>
14.	Arua City Council	Consultancy Services for Design Review and Construction Supervision for Construction of Go Down (1.050 km) in Cluster 1-Arua City Council under the USMID-AF Project <b>funded by the World Bank</b>
15.	Arua City Council	Consultancy Services for Design of single carriage Afro Triangle Road (0.20km), Industrial Lane (0.50 km), Market Lane (0.16 km) and Taban Lane (0.1 km) in Cluster 1-Arua City Council under the USMID-AF Project funded by the <b>World Bank</b>
16.	Kitgum Municipal Council	Consultancy Services for Design Review and Construction Supervision for selected Infrastructure sub projects in Cluster 1-Kitgum Municipal Council under the USMID-AF

No.	Name of Employer	Description of Contracts
		Project (Lamola Rd, Omony Ogaba A & Lagoro Rd, Guu Rd, Lagoro 1 Rd & Omany Ogaba B&-Lagoro Rd. Total length:3.172 km) <b>funded by the World Bank</b>
17.	Apac Municipal Council	Consultancy services for the Design Review and construction supervision of Works on Infrastructure Subprojects in Apac Municipal Council under USMID-AF Infrastructure Investment Program. ( <b>Funded by World Bank</b> )
18.	Moroto Municipal Council	Consultancy services for the Design Review and construction supervision of Works on Infrastructure Subprojects in Moroto Municipal Council under USMID-AF Infrastructure Investment Program. ( <b>Funded by World Bank</b> )
19.	Moroto Municipal Council	Consultancy Services for Supervision of Installation Of 234 No. Of Streetlights Along Circular – Lorika Road (81 Lights), Adyebo Road (50 Lights), Narwosi Road (50 Lights) And Independence Avenue (53 Lights) In Moroto Municipality under the USMID-AF Project funded by the <b>World Bank</b> .
20.	Adjumani District Local Government	Consultancy Services for Construction Supervision of Upgrading of 3.18km of Adjumani Town Council roads to Asphalt Concrete Surfacing and Rehabilitation of 20.59km of Kulukulu - Zoka road in Ukusijoni Sub County in Adjumani District - Lot 3 under the USMID-AF Project funded by the <b>World Bank</b>
21.	Ministry of Lands, Housing and Urban Development	Consultancy Services to Undertake Environmental and Social Audit for Mbarara, Kabale, Mubende, Masaka and Entebbe under the USMID-AF Project funded by the <b>World Bank</b>
22.	Stirling Civil Engineering & Sobetra Uganda Ltd	Providing Environment, Safety, Health and Social Safeguards Management, Monitoring and Consultancy Services for Lot 3: Recycling and Overlay of Lukuli Road, Including Signalization of Lukuli/Namasole/Kayemba Junction (7.81km) ( <b>Funded by World Bank</b> )
23.	Stirling Civil Engineering & Sobetra Uganda Ltd	Providing Environment, Safety, Health and Social Safeguards Management, Monitoring and Consultancy Services for Construction of Kisaasi Signalized Junction. ( <b>Funded by World Bank</b> )
24.	Stirling Civil Engineering & Sobetra Uganda Ltd	Providing Environment, Safety, Health and Social Safeguards Management, Monitoring and Consultancy Services for Construction of Semakula Rd and Doctor's Lane. ( <b>Funded by World Bank</b> )
25.	Gulu City Council	Consultancy Supervision for the Construction of Ben Ocan and Associated roads and Completion of Upper Churchill Road (Upper Churchill Road (277m), Hassan Road (410 m), Ben Ocan Road (270m), Pangu or Mosque Road (110 m). Total Length: 1,067km ( <b>Funded by World Bank</b> )
26.	Uganda National Roads Authority	Consultancy Services for the Design and Construction Supervision of the Rehabilitation of Jobbi Road (1.0 km), Wamara Road (1.2 km) and Wadriff Road (0.1 km) in Pakwach Town
27.	Uganda National Roads Authority	Consultancy Services for the Design and Construction Supervision of the Rehabilitation of Omaki Road (0.2km), Administration Road (0.09km), Nyipir Road (0.16km), Uringi Road (0.45km), Ringa Road (0.18km), Pithua Road (0.35km), Samuel Oniegu Road (0.08km), Juma Ali Road (0.08km), Anyiri Road (0.14km), Market Square Road (0.37 km) and Classic Lane (0.08) in Nebbi Town
28.	Kira Municipal Council	Consultancy services for supervision of Civil Works for Upgrade to Bitumen standards using low-cost seal of Agenda – Mbalwa – Agenda -Namugongo (1.6Km)
29.	Kira Municipal Council	Consultancy services for supervision of Civil Works for Upgrade to Bitumen standards using low-cost seal of Pine Road (1.2Km)
30.	Uganda Virus Research Institute	Consultancy services for the Development of UVRI Master Plan, Design of Architectural Drawings and BoQs for Science Block and Staff Houses.
31.	Ministry of Local Government	Consultancy services for the Design of Ibanda Central Market in Ibanda Municipality under the Markets and Agricultural Trade Improvement Program Project Second Project (MATIP-2) funded by the <b>African Development Bank</b>
32.	Ministry of Local Government	Consultancy services for the Design of Nyahuka Central Market in Nyahuka Town Council, Bundibudyo District under the Markets and Agricultural Trade Improvement Program Project Second Project (MATIP-2) funded by the <b>African Development Bank</b>
33.	K2N Architecture and Engineering Consultancy PLC	Detailed Engineering Design for the Expansion of Robe Airport

No.	Name of Employer	Description of Contracts
34.	K2N Architecture and Engineering Consultancy PLC	Detailed Engineering Design, Construction supervision & contract administration service of the Extension of Semera airport
35.	K2N Architecture and Engineering Consultancy PLC	Detailed Engineering Design, Contract Administration & Construction supervision service of ATC Tower at Addis Ababa
36.	K2N Architecture and Engineering Consultancy PLC	Consultancy service for Maintenance and Space Improvement & Construction Supervision & Contract Administration Service of Axum, Lalibela, Gonder & Arbaminch Passenger Terminals
37.	METAS Investments Ltd	Consultancy Services for Design and Supervision of Construction of a Six-story Residential house located in Mbuya, Nakawa Division.
38.	Arch Estates U Ltd	Consultancy Services for Detailed Engineering Design, Construction Supervision of Arch Residences located in Buwate, Kira Division.
39.	Jersey Investments Ltd	Consultancy Services for Detailed Engineering Design and Construction Supervision of the six-story Jersey Residential house located in Nakawuka, Wakiso District.
40.	African Development Bank. Implemented by Ministry of Water and Environment	Consulting Services for Feasibility Studies and Detailed Engineering Design for Bulk Water Supply and Irrigation Infrastructure in the Central and Southwestern Regions of Uganda
41.	Ministry of Water & Environment	Consultancy Services to Develop Water Source Protection Plan for Rubanda District Water Supply and Sanitation System
42.	Ministry of Water and Environment	Consultancy Services for Preparation of a Micro Catchment Management Plan Around Selected Water Sources in Ora Sub Catchment ( <b>Funded by World Bank</b> )
43.	Ministry of Water and Environment	Consultancy Services for Preparation of a Micro Catchment Management Plan Around Selected Water Sources in Enyau Sub Catchment ( <b>Funded by World Bank</b> )
44.	Ministry of Water and Environment (MoWE)	Consultancy services for Strengthening Community Planning, Mobilization and Capacity Building in Small Towns Water Supply Systems Under Strategic Towns Water and Sanitation Project (STWSSP). Lot 5: Buikwe Water Supply and Sanitation System.
45.	Ministry of Water and Environment	Consultancy Services for Preparation and Implementation of a Micro-Catchment Plan to Restore Degraded Riverbanks and Protect Buffer Zones in R. Rufuha located in Maziba Catchment
46.	Ministry of Water and Environment	Consultancy Services for Preparation and Implementation of a Micro-Catchment Plan to Restore Degraded Riverbanks and Protect Buffer Zones in R. Kiruruma and Nangaro-Nyamiyaga-Bubare stream located in Kabale and Rubanda Districts respectively in Maziba Catchment
47.	Ministry of Water and Environment	Consultancy Services to Support Selected Communities in Ongino -Aakum wetland located in Bisina -Opeta Sub-catchment, Awoja Catchment to Prepare and Implement a Wetland Restoration and Management Micro-Catchment Plan
48.	Ministry of Water and Environment	Consultancy Services to Support Selected Communities in Asubakietengei wetland located in Bisina -Opeta Sub-catchment, Awoja Catchment to Prepare and Implement a Wetland Restoration and Management Micro-Catchment Plan
49.	Ministry of Water and Environment	Consultancy Services to Support Selected Communities in Adwoka and Kamurojo wetlands located in L. Kechobo Sub-catchment, Awoja Catchment to Prepare and Implement Wetland Restoration and Management Micro-Catchment Plans
50.	Ministry of Water and Environment (MoWE) Water and Sanitation Development Facility North	Consultancy Services for Conducting Environment Socio-Impact Assessments and Water Source Protection Plans in Lot 1: Keri-Oraba (Koboko), Okokoro (Maracha), Zombo TC (Zombo) & Palabek-Kal (Lamwo), Lamwo TC (Lamwo)
51.	Ministry of Water and Environment Water and Sanitation Development Facility - Central	Consultancy Services to Undertake Location, Reconnaissance, Topographic, Cadastral and Valuation Surveys in WSDF-C Area of Operation in Central Region Under a Framework Contract
52.	Ministry of Water and Environment Water and Sanitation Development Facility-SWB	Consultancy Services for Environmental and Social Impact Assessment of Piped Water Supply and Sanitation Schemes in Five Selected Towns/RGCS

No.	Name of Employer	Description of Contracts
53.	Ministry of Water and Environment, Directorate of Water Development, Water and Sanitation Development Facility-SWB	Consultancy Services for Environmental and Social Impact Assessment for Kyenshama Earth Dam in Mbarara District
54.	Ministry of Water and Environment	Consultancy Services for The Development of The Monitoring and Evaluation Framework for The Water and Environment Sector Refugee Response Plan (WESRRP)
55.	Ministry of Water and Environment (MoWE) (Sub- Consultancy with SABA Engineering Plc)	Feasibility Studies and Detailed Design of Lumbuye and Nyabanja Bulk Water Systems and Irrigation Schemes
56.	Ministry of Agriculture, Animal Industry and Fisheries (MAAIF), Uganda) (Sub-Consultancy with SABA Engineering Plc)	Consultancy Services for Design Review and Construction Supervision of Sironko Irrigation Scheme
57.	Ministry of Agriculture, Animal Industry and Fisheries (Sub-consultancy with SABA Engineering Plc) World Bank Funded	Pre-feasibility Study for the development of Priority Low land rice irrigation schemes under ACDP in 13 Districts of Uganda
58.	Ministry of Lands, Housing and Urban Development Funded by World Bank (Sub-Consultancy with SABA Engineering Plc)	Consultancy Services for Engineering Designs, Preparation of Environmental Assessments, Resettlement Action Plans, Tender Documents and Tender Assistance for Batch 11 Infrastructure Investments in 14 Selected Municipalities with Funding from World Bank (USMID Batch II) ( <b>Funded by World Bank</b> )
59.	Ministry of Ministry of Works and Transport-Funded by GoU. Contracted: Ashok and SABA Engineering Plc	Pre-Feasibility Study and Feasibility Study for The Project for Rehabilitation of Urban Roads in 22 Participating Municipalities
60.	Mota-Engil Africa (World Bank Funded)	Provision of Works and Services Under Output and Performance - Base Road Contracts (OPRC) For Tororo -Mbale Soroti -Dokolo -Lira Kamdini road (World Bank Funded) ESIA's for 2 asphalt plants, stone quarry and campsite
61.	Ministry of Water and Environment-Water and Sanitation Development Facility-North	Consultancy Services for Environmental Assessment for the Ministry of Water and Environment Regional Office Block in Moroto Municipality
62.	Fotogenix Limited	Environmental and Social Assessment the Proposed Commercial Building and Storage Houses in Nakawa Division, Kampala District
63.	China Civil Engineering and Construction Corporation	Environmental Audit for the Stone Quarry, Asphalt Plant and Camp site for the construction of Namusi-Sironko-Muyembe-Kapchorwa road (65km)
64.	Bulambuli District Local Government	Consultancy Services for Environmental and Social Impact Assessment of the Irrigation Scheme in Bunambutye Subcounty, Bulambuli District Local Government. BDLG Funded
65.	Zongmei Engineering Group +256 785 961762	Preparation and implementation supervision of wetland restoration plans for Geyi, Ocaga and Tochi wetlands along Olwiyo-Gulu Road Project
66.	Rural Electrification Agency (REA)/ China Sinogy Electric Engineering Co. Ltd	Social Investigation and Environmental Assessment Under the Project of Bridging the Demand Supply Balance Through the Accelerated Rural Electrification Programme
67.	Zongmei Engineering Group	Preparation and implementation supervision of ESMMP during the upgrading of Olwiyo-Gulu Road
68.	Ntake Bakery Company Limited	Environmental and Social Audit and Impact Assessment for the Expansion of the Ntake Bakery Flour Mill in Nalukolohgo
69.	Liao Ning China Middle East Papers Co (U) Ltd	Environmental Audit for the Paper Facility in Mukono District
70.	Kehong Industrial Development Uganda Limited	Environmental and Social Impact Assessment for the Agricultural Industrial Park in Luwero District (Irrigation, Rice and Horticulture growing, Poultry, Agriculture Mechanisation) South to South Corporation
71.	Ndere Centre Kampala	ESIA for Small Scale Irrigation and Fish Farming Project in Itojo Village of Ntungamo District

No.	Name of Employer	Description of Contracts
72.	China Civil Engineering Construction Corporation	Preparation of Decommissioning Plan for Numunsi-Sironko-Kapchorwa road project
73.	Armpass Technical Services	Environmental and Social Impact Assessment for the Stone Quarry in Mubende and Tenants Sensitization of the land where the quarry is located
74.	Morc Trade Company LTD	Environmental and Social Impact Assessment for an Abattoir in Sembabule Town Council
75.	KASAF Uganda Limited	Environmental and Social Impact Assessment for Food Processing and Packaging Plant
76.	Nyagak Hydro power Project	Environmental and Social Impact Assessment for Nyagak Hydro power Project
77.	Kampala Ezzi Stores Limited +256 792786052	Environmental Impact Assessment for a Warehouse
78.	Saba-Gifco and Lexus Development +256 750 550 551	Environmental Impact Assessment for the Inland Container Depot
79.	Zhongmei Engineering Group Ltd +256 785 961762	Environmental Impact Assessment for a Concrete Batching Plant
80.	Zhongmei Engineering Group Ltd +256 785 961762	Environmental Impact Assessment for Stone quarry and crusher plant
81.	Zhongmei Engineering Group Ltd +256 785 961762	Environmental Impact Assessment for workers' camp
82.	China Civil Engineering Construction Corporation +256 756 590252	Environmental Impact Assessment for Workers' Camp, ESMMP, OHS Plan and Waste Management Plan

#### SOFTWARE USED AT SEGAMU 14 CONSULTS LTD

- Environmental Software (EMEX EHS Solution, QNOPY, INX, etc)
- Arc GIS
- HEC RAS
- Hydro CAD
- CROPWAT versions 8 and 4.3
- VISUM
- Arc SWAT
- In Roads Road design software
- SDR mapping and design software for topography and road design

- HDM – 4 software for feasibility studies
- Computer aided design and drafting (CADD)
- Micro station for Windows
- Image processing and mapping
- Mathematical modelling and simulation
- Micro station
- MDM
- Engineering design and structural analysis, SAP 2000
- Spread sheet application
- Word processing

## 5.0 Our Clients

At Segamu 14 Consults Ltd, we believe our core business units possess the greatest potential to offer our vast customer base to the best of our services. Some of our existing clientele are;

- Uganda National Roads Authority
- Sharjah Chamber of Commerce and Industry
- Ministry of Lands, Housing and Urban Development through USMID
- Ministry of Agriculture, Animal Industry and Fisheries (M.A.A.I.F)
- Ministry of Local Government (M.O.L.G)
- Ministry of Water and Environment (M.W.E)
- Uganda Investment Authority
- Lira City Council
- Gulu City Council
- Arua City Council
- Entebbe Municipal Council
- Makindye Ssabagabo Municipal Council
- Nansana Municipal Council
- Kitgum Municipal Council
- Apac Municipal Council
- Moroto Municipal Council
- Kira Municipal Council
- Adjumani District Local Government
- Stirling Civil Engineering & Sobetra Uganda Ltd
- Uganda Virus Research Institute
- Fotogenix Limited
- Rural Electrification Agency (REA)/ China Sinogy Electric Engineering Co. Ltd
- Mota-Engil Africa
- Kampala Capital City Authority
- China Civil Engineering Construction Corporation
- Zhongmei Engineering Group Limited
- Kehong Industrial Development Uganda
- Middle East Paper Company Limited
- Bulambuli district Local Government
- Ntake Bakery Company Uganda Limited
- SABA Engineering Plc
- Saba-Gifco Uganda Limited
- Kampala Ezzi Stores Limited
- Ndere Centre
- National Water and Sewerage Corporation
- Kasaf Uganda Limited
- MorcG Trading Company Limited
- Among others (Individual Projects)





## 6.0 Location and Contacts

**Postal Address:**

P. O Box 36306, Kampala

**Physical Address:**

Plot 2758, Odur Lane, Ntinda -Kigoowa

**Telephone Contacts:**

+ 256 (0) 782129014

+256 (0) 785 777 996

**E-mail:**

info@segamu14consults.com

smusa@segamu14consults.com

segamu14consultants@gmail.com

**Website:**

[www.segamu14consults.com](http://www.segamu14consults.com)



# Segamu 14 Consults Ltd.

Engineering & Planning,  
Environmental & Social Safeguards,  
Water & Sanitation