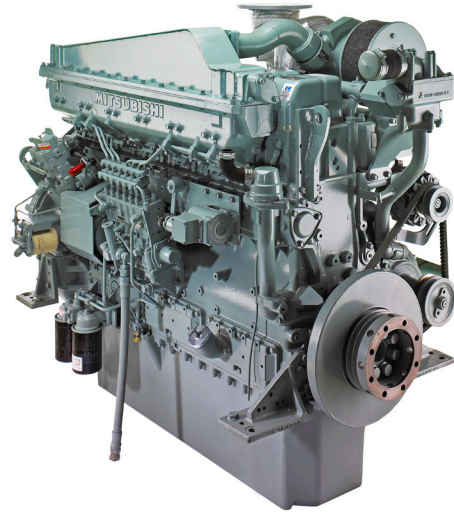


S6B3-T2MPTAW
 335 - 375 kW | MARINE GENERATOR
 IMO TIER III - SCR ON REQUEST

MITSUBISHI MARINE ENGINE

RELIABLE MECHANICAL ENGINE



ENGINE DATA

Engine model	S6B3-T2MPTAW
Cylinder configuration	6 in-line
Total displacement	14.6
Bore x stroke (mm)	135 x 170
Flywheel and housing	SAE 14 / SAE 10
Compression ratio	14.2:1
Dry weight (kg)	1310

Method of operation

4-stroke, water-cooled diesel engine, with direct-injection, turbocharger and air-cooler

Cooling method

separate high and low temperature cooling circuit; charge air cooler by closed freshwater system controlled by thermostat (intercooler)

RATING^{1,2}

Application	Auxiliary Generator		Harbour Emergency Generator	
	Prime	Prime	Prime	Prime
Output (kW)	335	375	335	375
Output (bhp)	449	503	449	503
Engine speed (rpm)	1500	1800	1500	1800
Emissions	IMO Tier III (SCR on request)			

¹ For rating definitions, please see our website.

² Atmospheric condition: barometric pressure: 100kPa, ambient temperature: 298K, relative humidity: 30%.

STANDARD AND OPTIONAL EQUIPMENT

STANDARD EQUIPMENT

Governor (mandatory)

- Electronic governor, with speed control box

Fuel system

- Flexible fuel supply - and return hoses
- Fuel feed pump
- Fuel fine filters, change-over type
- Fuel injection pump
- Dual walled high-pressure fuel lines
- Fuel injectors

Lubricating oil system

- Wet type oil pan with inspection covers
- Oil pressure pump, gear driven
- Lubricating oil filters, change-over type
- By-pass filter
- Oil cooler with thermostat

Starting and electrical system

- Electric starter (Earth floated 24V)
- Alternator, 30 Amps.
- Stop solenoid (ETS)

Cooling system

- Fresh water pump including piping and thermostat (HT)
- Front pulley PTO standard

Air inlet system

- Mitsubishi turbocharger
- Air inlet silencer with pre-cleaner
- Inlet air aftercooler or intercooler
- Inlet manifolds or ducts

Exhaust system

- Stainless steel insulation (SOLAS)

Other

- Mounting brackets for rigid mounting
- Flywheel and housing, SAE standard
- Torsional vibration damper

OPTIONAL EQUIPMENT

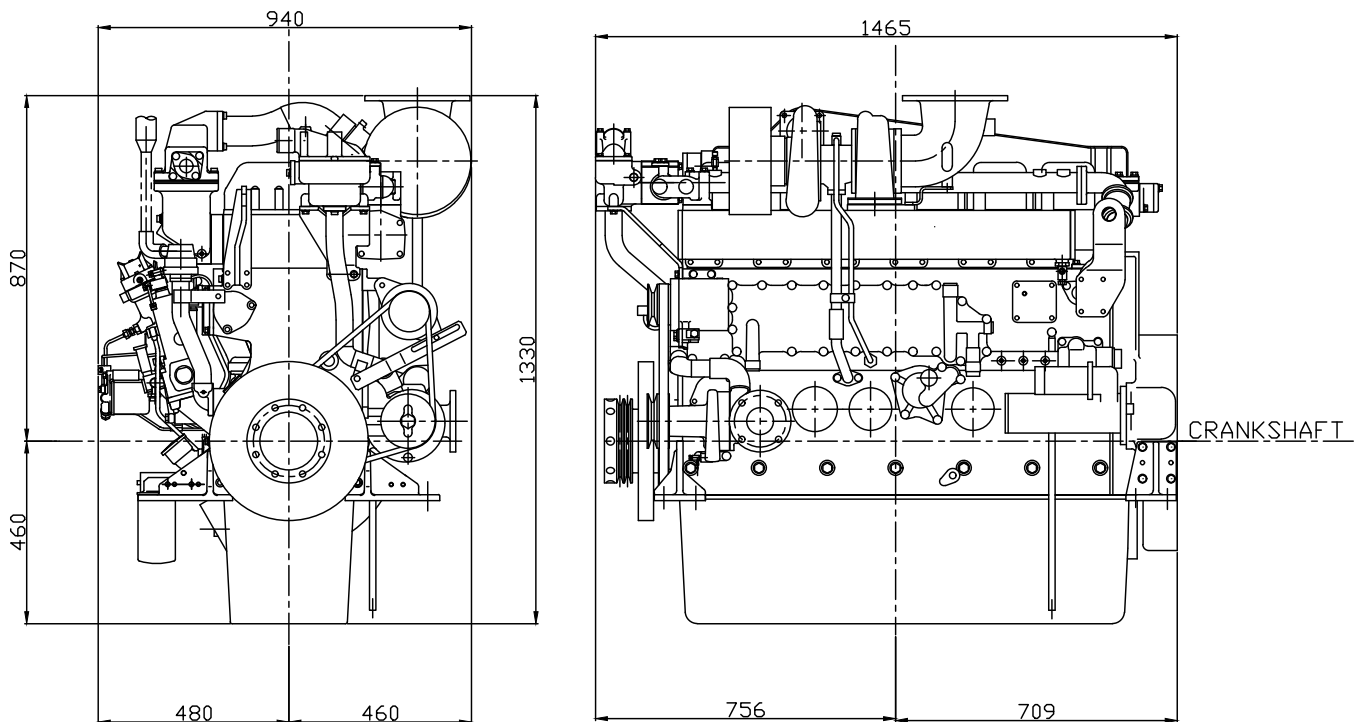
Classification

We are cooperating with many of the major classification societies.

Exhaust system

- Stainless steel insulation (SOLAS)
- Flexible expansion joint

DIMENSIONS



More information

Contact your local dealer for more information regarding Mitsubishi Marine Engines and optional equipment or, visit www.mtee.eu

MOVE THE WORLD FORWARD **MITSUBISHI**
HEAVY
INDUSTRIES
GROUP