

# STUDIO 1,2 & 4

2700 SQFT/251 SQM

studios for photographers by photographers.

monde

The Archives. Unit 10 High Cross Centre. Fountayne Rd. London N15 4QN [info@studiomonde.co.uk](mailto:info@studiomonde.co.uk) [@studiomondelondon](https://www.instagram.com/studiomondelondon)

# STUDIO 1,2 & 4 COMBINED

2700 SQFT/251 SQM

For large productions, we recommend booking S1, S2 and S4 together — conveniently located on the same floor.

All 3 studios provide 2700 sq ft of space, which can easily accommodate separate production, beauty and styling areas, and be split for stills and motion teams working simultaneously.

## FEATURES

- 2700 sqft / 251 sqm shoot space
- 4.6m ceiling height throughout
- 5.5 x 5.5m floor to ceiling cove
- Large east facing windows
- Excellent natural light or full blackout options in S1 & S2
- Concrete floors
- Dedicated beauty and styling areas
- Shower and kitchen facilities
- Large goods lift (3.2 x 3.2m)

## POWER

- 1x 32amp 3 Phase
- 2x 32amp Single Phase
- Multiple 13amp double sockets

## INCLUDED

- 20 x Sandbags
- 20 x Poly Boards
- 20 x Poly Stands
- 4 x Mobile Clothes Racks
- 160 x Coat Hangers (mix of top & combo)
- 9 x Trestle Tables
- 20 x Foldable Chairs

## OPTIONAL for rental

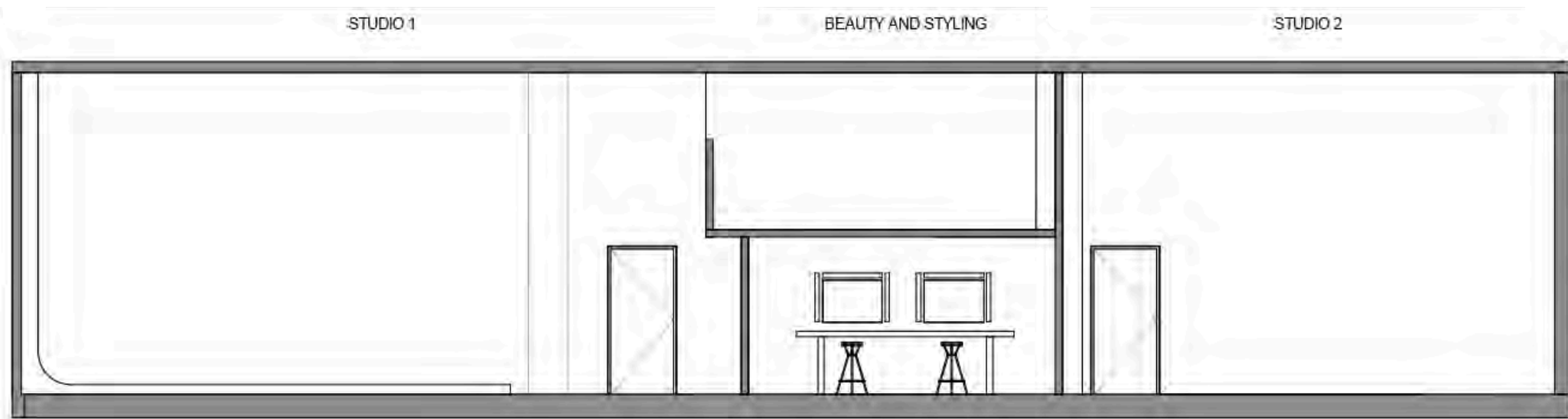
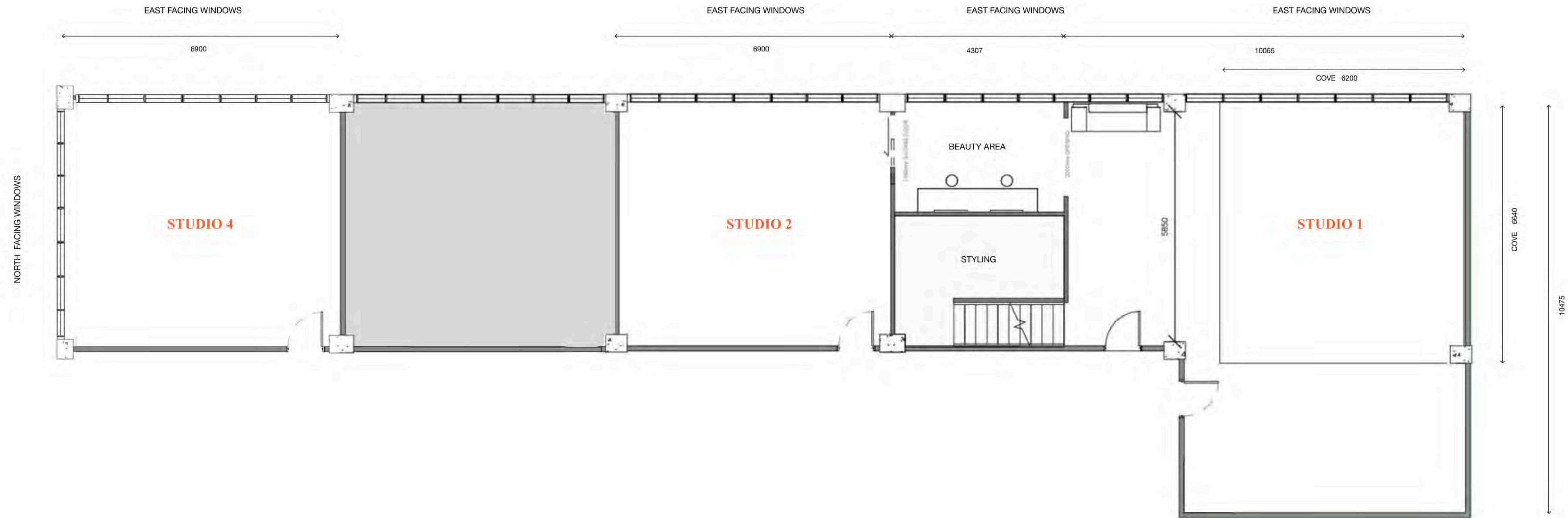
- Steamer
- Robes, slippers, towels & table cloths
- Additional rails and more



monde

# STUDIO 1,2 & 4 COMBINED - FLOORPLAN

2700 SQFT/251.5 SQM



*monde*

# STUDIO 1,2 & 4 GALLERY



5.5 x 5.5 FLOOR TO CIELING COVE



2 x MODULAR BEAUTY TABLES



CORNER DAYLIGHT



MEZZANINE LEVEL CLIENT AREA



SEPARATE STYLING AREA

*monde*