

STUDIO MONDE

TOTAL 4000 SQFT / 372 SQM

studios for photographers by photographers.

monde

The Archives. Unit 10 High Cross Centre. Fountayne Rd. London N15 4QN info@studiomonde.co.uk [@studiomondelondon](https://www.instagram.com/studiomondelondon)

STUDIO 1

1700 SQFT/158 SQM

STUDIO 1 provides a generously sized floor to ceiling cove situated next to large, unobstructed east facing windows.

Full 4.6m clearance allows for expansive set and lighting options.

FEATURES

- 1350 sqft / 120.8 sqm open plan shoot space
- 4.6m ceiling height
- 5.5 x 5.5m floor to ceiling cove
- Large east facing windows
- Excellent natural light or full blackout options
- Concrete floors
- Dedicated beauty area
- Shower and kitchen facilities
- Large goods lift (3.2 x 3.2m)

POWER

- 1x 32amp 3 Phase
- 2x 32amp Single Phase
- Multiple 13amp double sockets

INCLUDED

- 10x Sandbags
- 10x Poly Boards
- 10x Poly Stands
- 2x Mobile Clothes Racks
- 80 x Coat Hangers (mix of top & combo)
- 3x Trestle Tables
- 8 x Foldable Chairs

OPTIONAL for rental

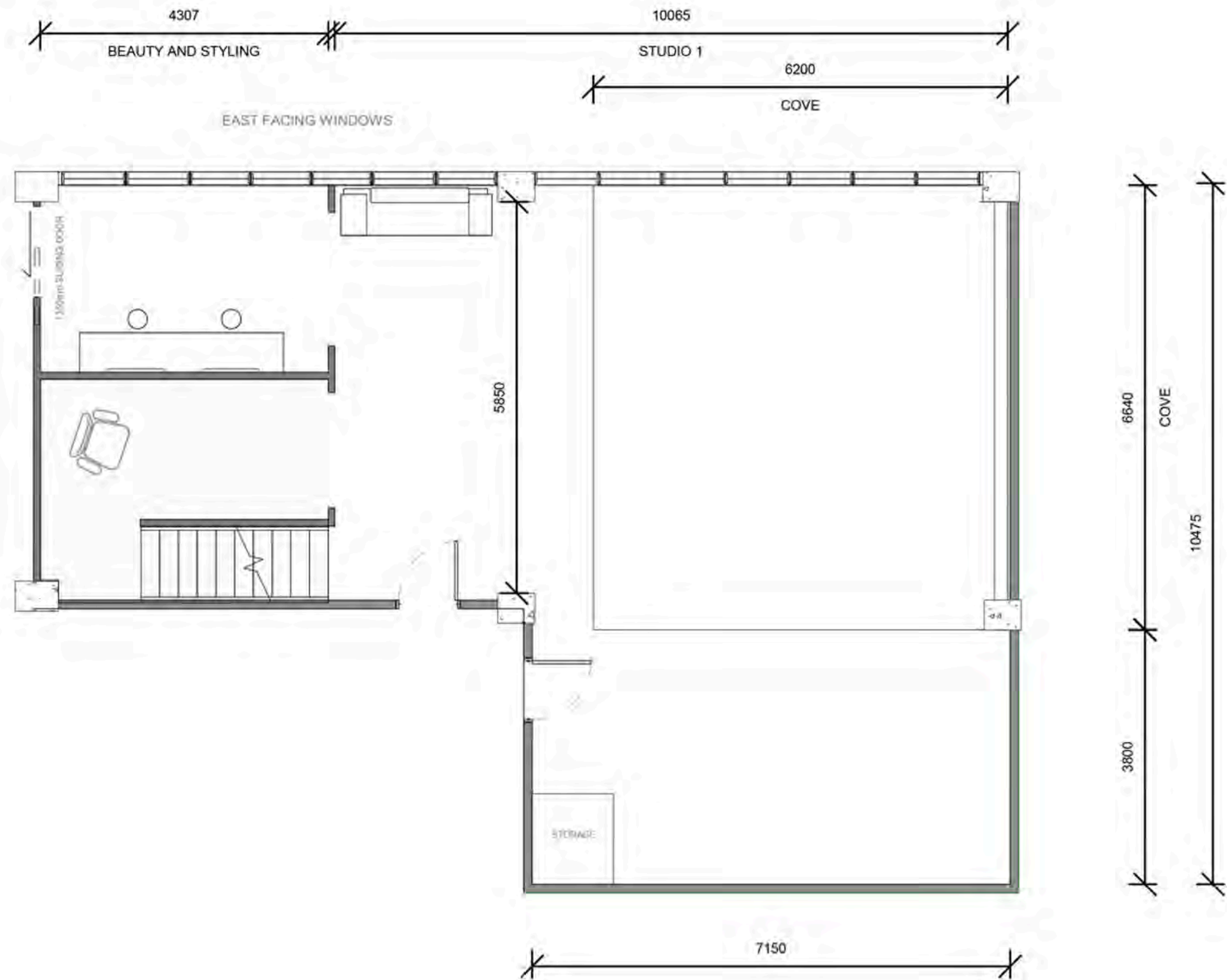
- Steamer
- Robes, slippers, towels & table cloths
- Iron & Ironing board
- Additional rails and more



monde

STUDIO 1 FLOORPLAN

1700 SQFT/158 SQM



monde

STUDIO 2

500 SQFT/46.5 SQM

Conveniently located next door to Studio 1, STUDIO 2 is perfect for smaller productions, still life shoots, fittings, lookbooks or as an additional styling and production area alongside Studio 1.

FEATURES

- 500 sqft / 46.5 sqm shoot space
- 4.6m ceiling height throughout
- Large east facing windows
- Excellent natural light or full blackout options
- Concrete floors
- Mobile beauty table
- Shower and kitchen facilities
- Large goods lift (3.2 x 3.2m)

POWER

- 7x 13amp double sockets

INCLUDED

- 5x Sandbags
- 5x Poly Boards
- 5x Poly Stands
- 1x Mobile Clothes Racks
- 50x Coat Hangers (50x Top + 50x Bottom)
- 40 x Coat Hangers (mix of top & combo)
- 3x Trestle Tables
- 8 x Foldable Chairs

OPTIONAL for rental

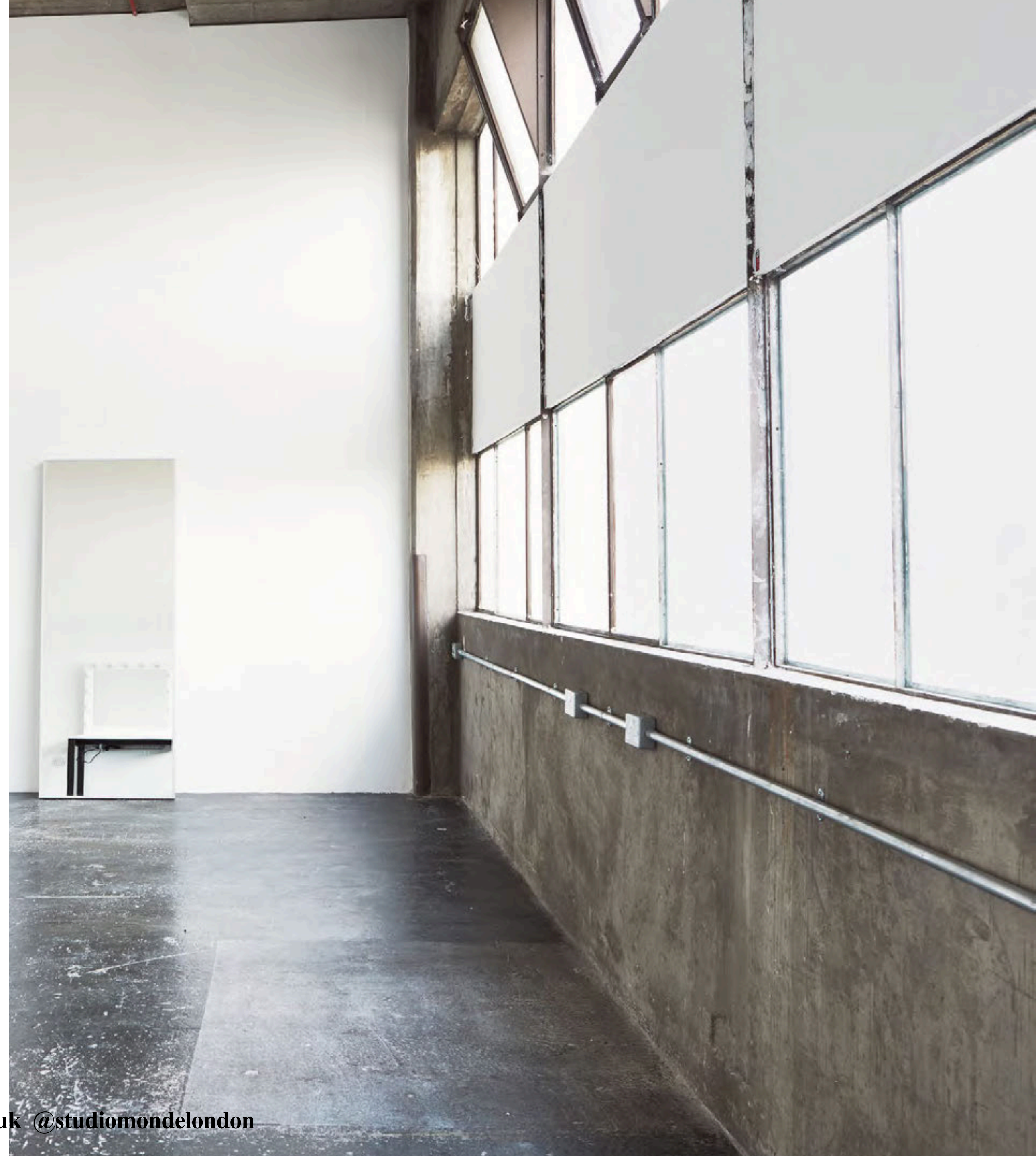
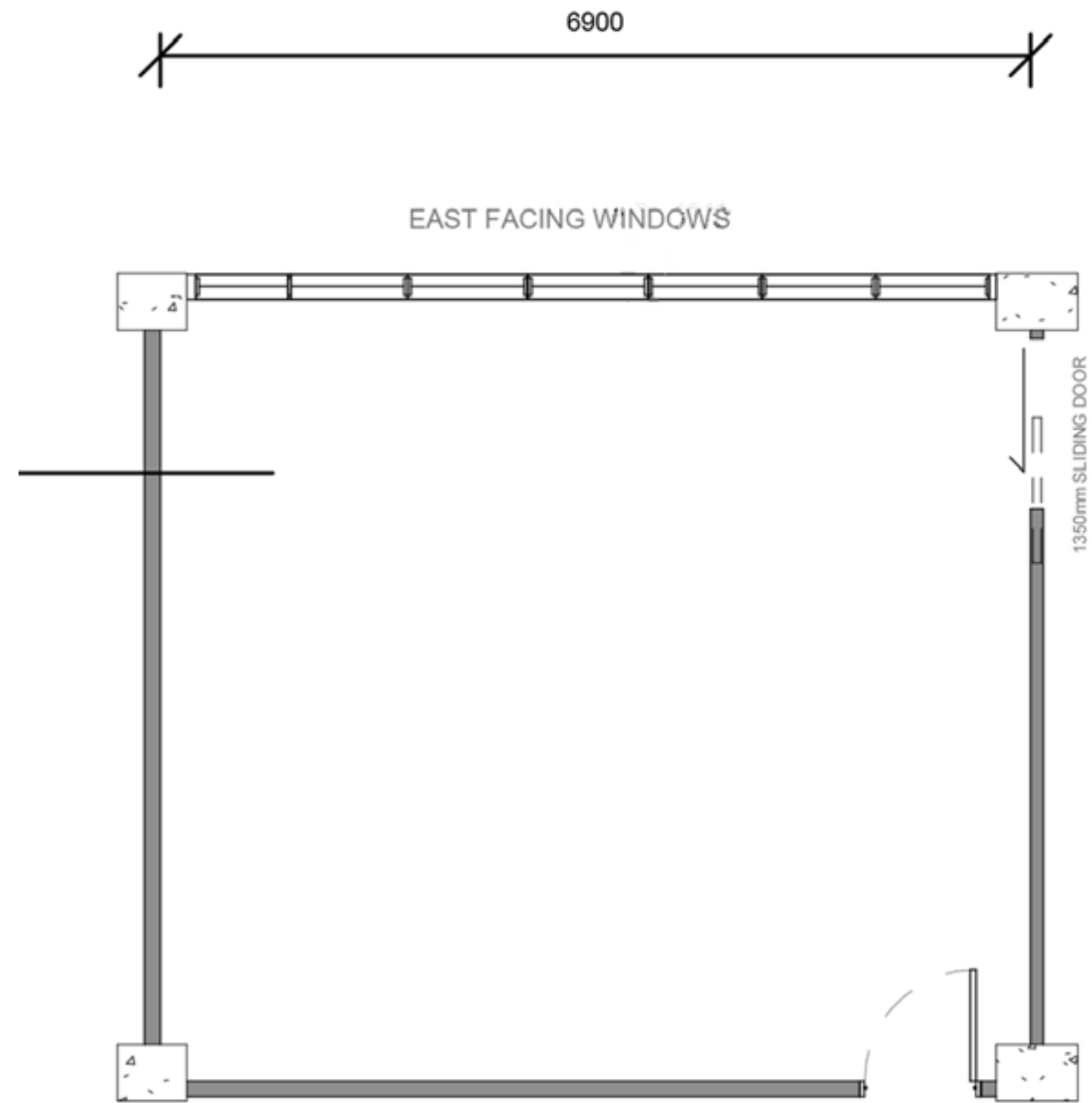
- Steamer
- Robes, slippers, towels & table cloths
- Iron & Ironing board
- Additional rails and more



monde

STUDIO 2 FLOORPLAN

500 SQFT/46.5 SQM



monde

STUDIO 3

1300 SQFT/120.8 SQM

A large, open plan space STUDIO 3 is designed for projects that require unobstructed floor area and a wide shooting space. Complete with mobile hair and makeup tables the space has been designed to be fully modular, an empty canvas to make your own.

FEATURES

- 1300 sqft / 120.8 sqm open plan shoot space
- 4.6m ceiling height
- Large east facing windows
- Excellent natural light or full blackout options
- Range of shoot surfaces (white wall, white brick or industrial shutters)
- Concrete floors
- Modular beauty area
- Shower and kitchen facilities
- Large goods lift (3.2 x 3.2m)

POWER

- 1x 32amp 3 Phase
- 2x 32amp Single Phase
- Multiple 13amp double sockets

INCLUDED

- 10x Sandbags
- 10x Poly Boards
- 10x Poly Stands
- 2x Mobile Clothes Racks
- 80 x Coat Hangers (mix of top & combo)
- 3x Trestle Tables
- 8 x Foldable Chairs

OPTIONAL for rental

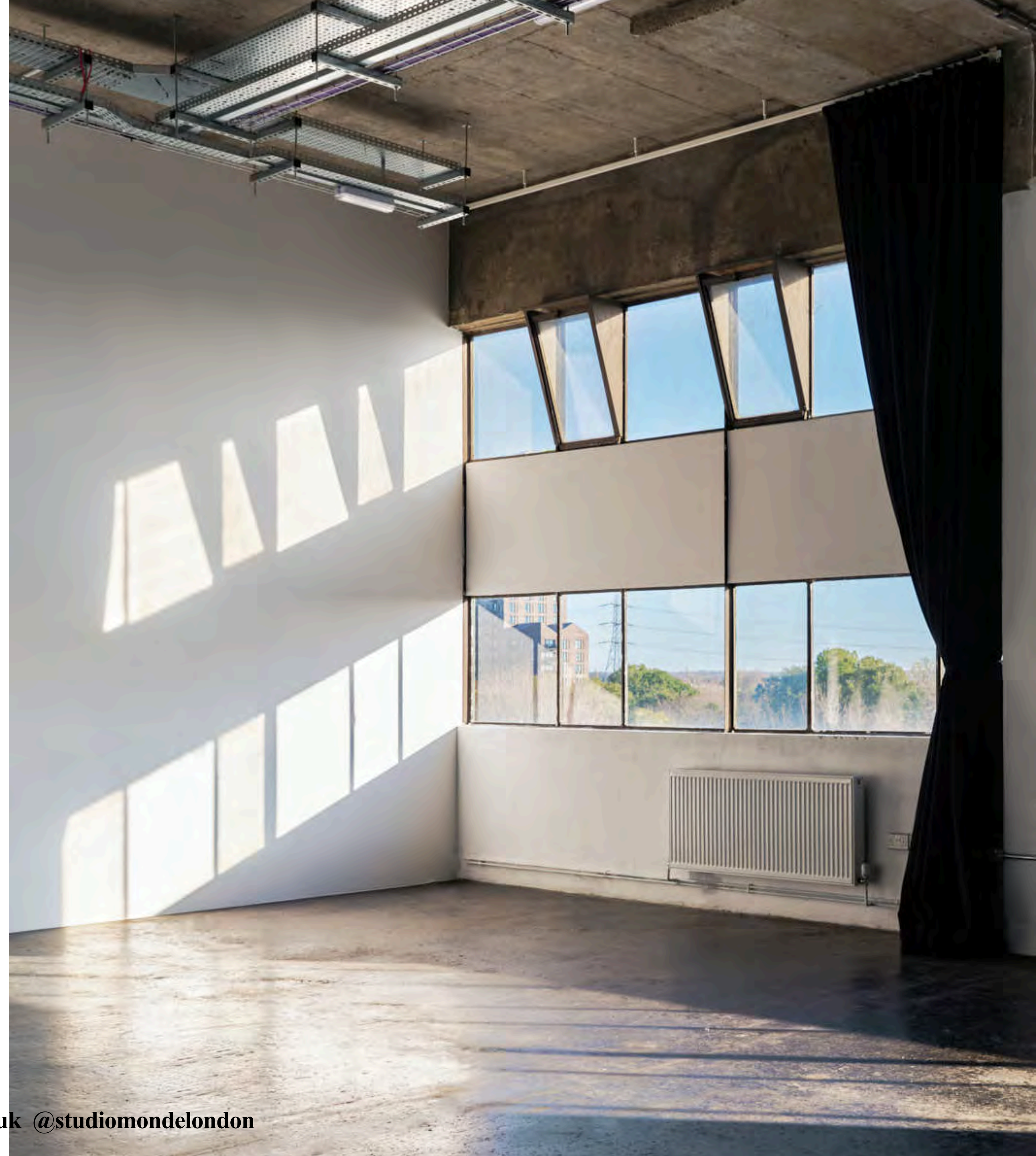
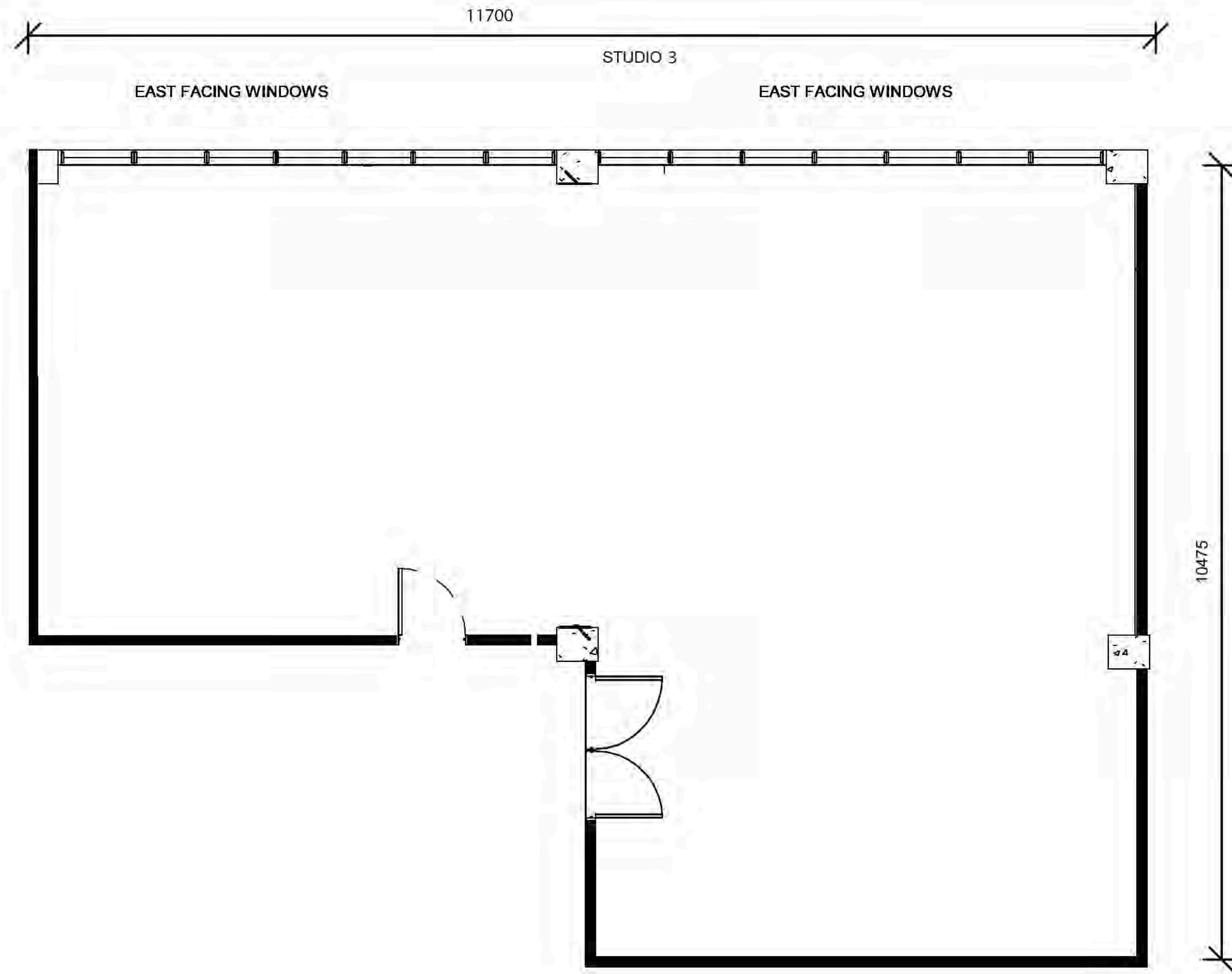
- Steamer
- Robes, slippers, towels & table cloths
- Iron & Ironing board
- Additional rails and more



monde

STUDIO 3 FLOORPLAN

1300 SQFT/120.8 SQM



monde

STUDIO 4

500 SQFT/46.5 SQM

STUDIO 4 is perfect for smaller productions, still life shoots, fittings, lookbooks or as an additional styling and production area alongside Studio 1, which is located down the corridor.

FEATURES

- 500 sqft / 46.5 sqm shoot space
- 4.6m ceiling height throughout
- Large east facing windows
- Excellent natural light from East and North facing windows
- Concrete floors
- Mobile beauty table
- Shower and kitchen facilities
- Large goods lift (3.2 x 3.2m)

POWER

- 5x 13amp double sockets

INCLUDED

- 5x Sandbags
- 5x Poly Boards
- 5x Poly Stands
- 1x Mobile Clothes Racks
- 40 x Coat Hangers (mix of top & combo)
- 3x Trestle Tables
- 8 x Foldable Chairs

OPTIONAL for rental

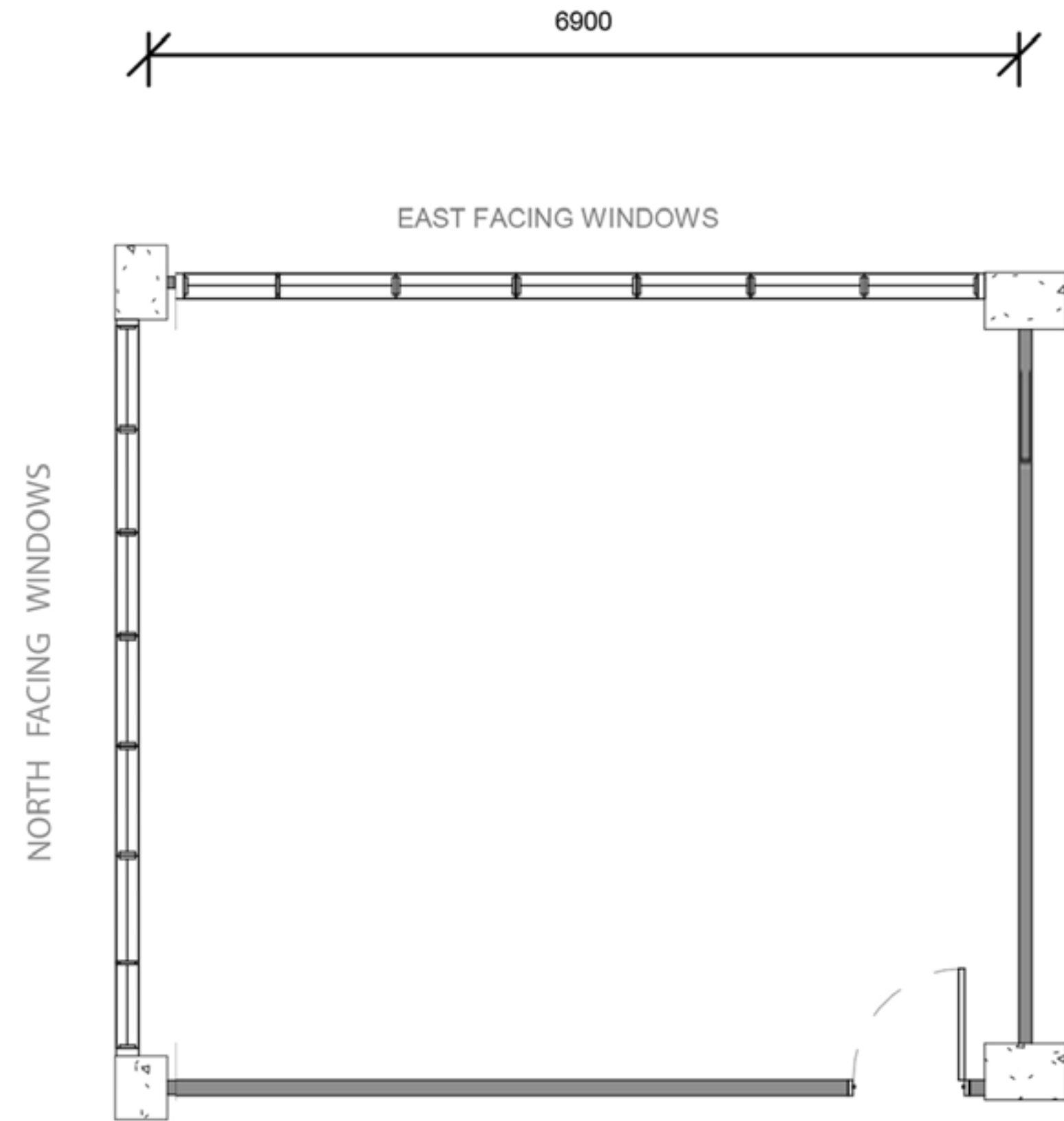
- Steamer
- Robes, slippers, towels & table cloths
- Iron & Ironing board
- Additional rails and more



monde

STUDIO 4 FLOORPLAN

500 SQFT/46.5 SQM



monde

STUDIO 1&2

2200 SQFT/205 SQM

Adjoined by a large sliding door, the combined floor space of STUDIOS 1&2 stretches to an impressive 1800 sqft. This allows larger productions to separate fully the shoot and production/styling areas between both spaces.

FEATURES

- 1850 sqft / 167.2 sqm shoot space
- 4.6m ceiling height throughout
- 5.5 x 5.5m floor to ceiling cove
- Large east facing windows
- Excellent natural light or full blackout options
- Concrete floors
- Dedicated beauty and styling areas
- Shower and kitchen facilities
- Large goods lift (3.2 x 3.2m)

POWER

- 1x 32amp 3 Phase
- 2x 32amp Single Phase
- Multiple 13amp double sockets

INCLUDED

- 15x Sandbags
- 15x Poly Boards
- 15x Poly Stands
- 3x Mobile Clothes Racks
- 120 x Coat Hangers (mix of top & combo)
- 3 x Trestle Tables
- 8 x Foldable Chairs

OPTIONAL for rental

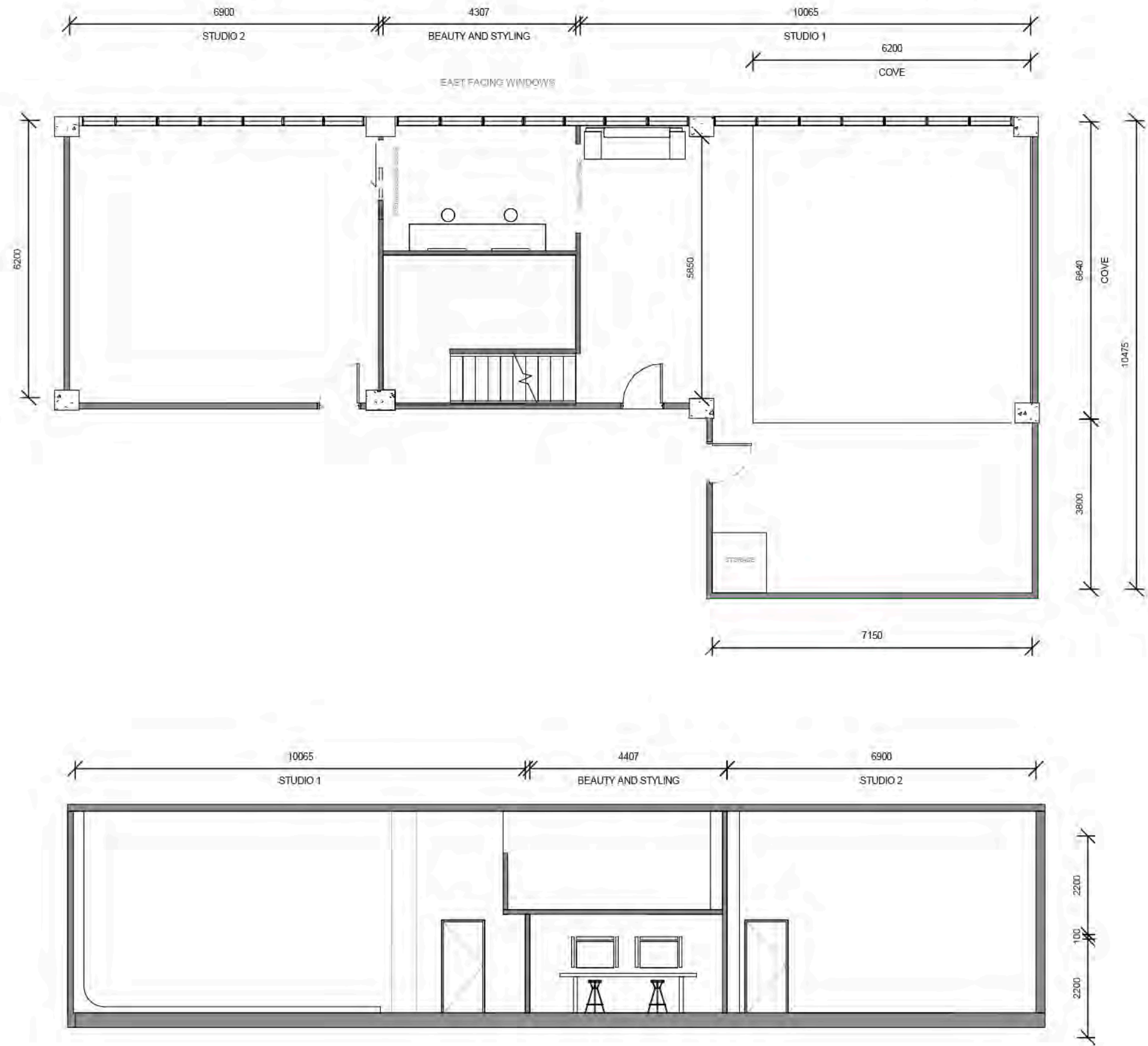
- Steamer
- Robes, slippers, towels & table cloths
- Iron & Ironing board
- Additional rails and more



monde

STUDIO 1 & 2 FLOORPLAN

2200 SQFT/205 SQM



monde

STUDIO 1,2 & 4 COMBINED

2700 SQFT/251 SQM

For large productions, we recommend booking S1, S2 and S4 together — conveniently located on the same floor.

All 3 studios provide 2700 sq ft of space, which can easily accommodate separate production, beauty and styling areas, and be split for stills and motion teams working simultaneously.

FEATURES

- 2700 sqft / 251 sqm shoot space
- 4.6m ceiling height throughout
- 5.5 x 5.5m floor to ceiling cove
- Large east facing windows
- Excellent natural light or full blackout options in S1 & S2
- Concrete floors
- Dedicated beauty and styling areas
- Shower and kitchen facilities
- Large goods lift (3.2 x 3.2m)

POWER

- 1x 32amp 3 Phase
- 2x 32amp Single Phase
- Multiple 13amp double sockets

INCLUDED

- 20 x Sandbags
- 20 x Poly Boards
- 20 x Poly Stands
- 4 x Mobile Clothes Racks
- 160 x Coat Hangers (mix of top & combo)
- 9 x Trestle Tables
- 20 x Foldable Chairs

OPTIONAL for rental

- Steamer
- Robes, slippers, towels & table cloths
- Additional rails and more



monde

STUDIO 1,2 & 4 COMBINED - FLOORPLAN

2700 SQFT/251.5 SQM



monde

SHOT AT STUDIO 1



SHOT AT STUDIO 1



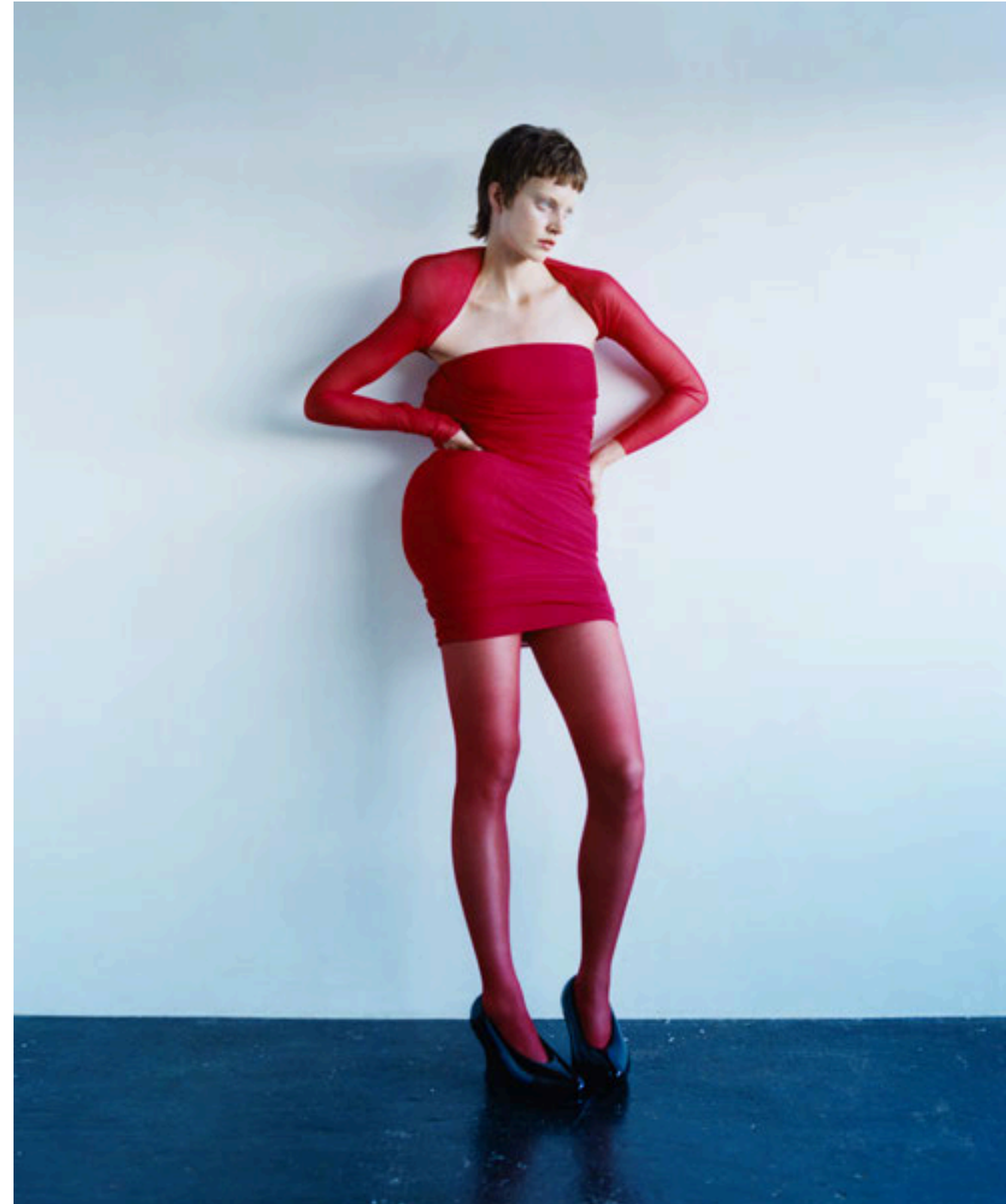
SHOT AT STUDIO 1



SHOT AT STUDIO 1

monde

SHOT AT STUDIO 2



SHOT AT STUDIO 2



SHOT AT STUDIO 2



SHOT AT STUDIO 2

monde

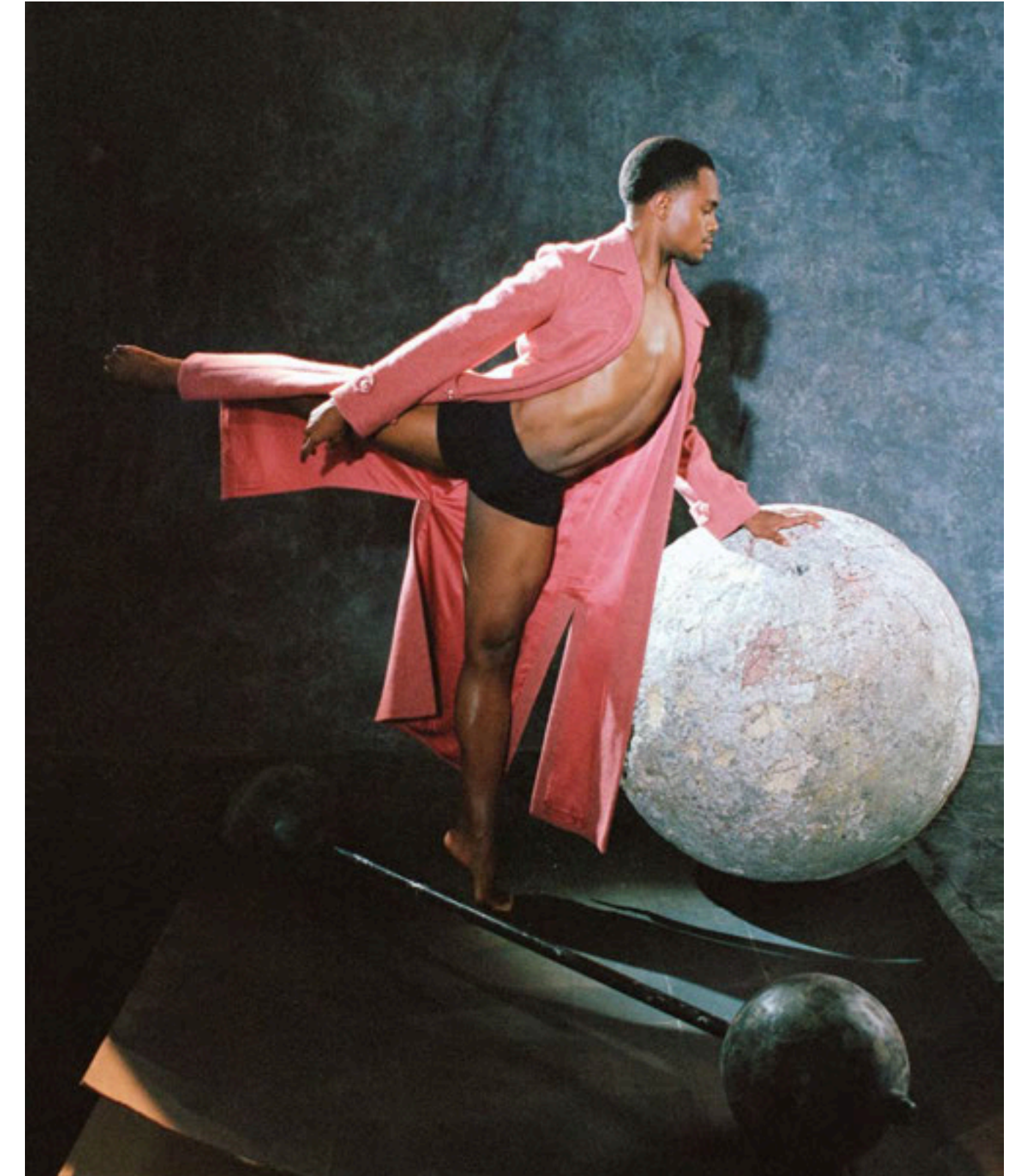
SHOT AT STUDIO 3



SHOT AT STUDIO 3



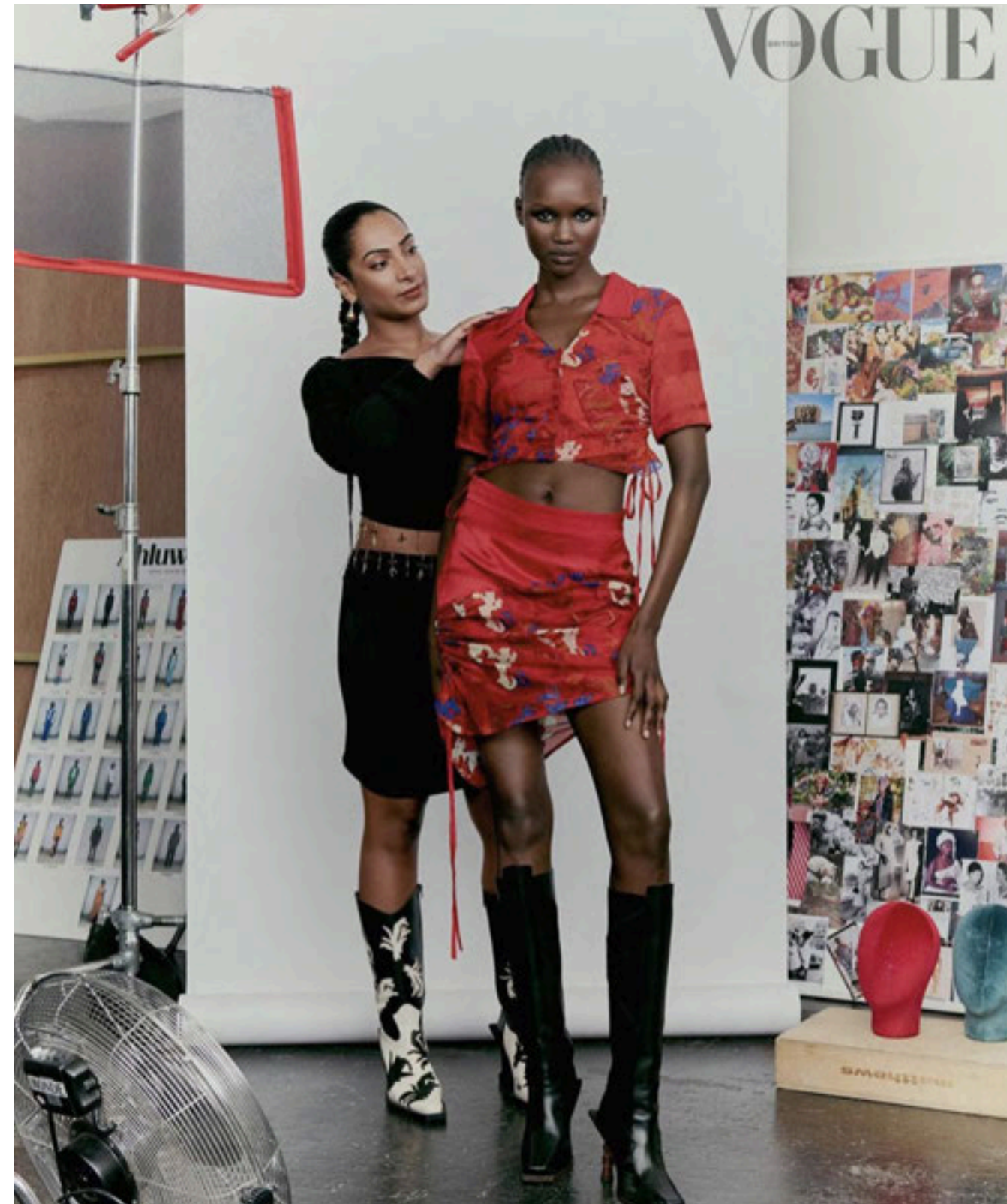
SHOT AT STUDIO 3



SHOT AT STUDIO 3

monde

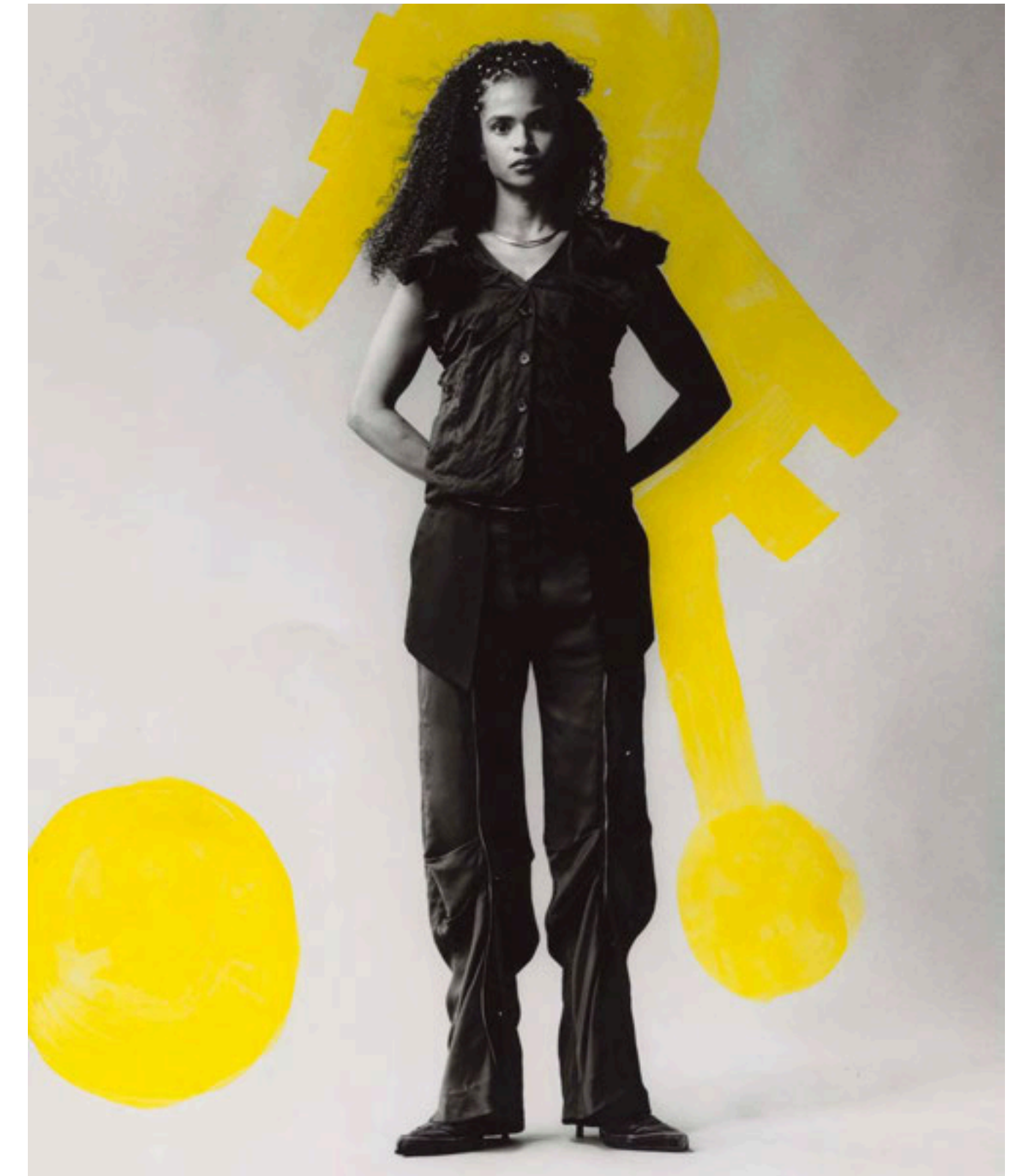
SHOT AT STUDIO 1&2



SHOT AT STUDIO 1&2



SHOT AT STUDIO 1&2



SHOT AT STUDIO 1&2

monde

PARTNERS

123 LONDON

Our equipment partner is 123 London, across their team they have a combined 150 years of experience in the industry, meaning your shoot is in very safe hands. Based in Shoreditch, their team handles same-day additions and last-minute requests with ease. Deliveries are handled with fully electric vans and bicycle couriers where possible. All major brands are stocked, including Profoto, Aputure, Aladdin, Arri, Litegear and Dedo, for both stills and moving image. With free delivery and pick-up, your kit is already waiting for you at the studio, ready to set up and shoot!

123 London



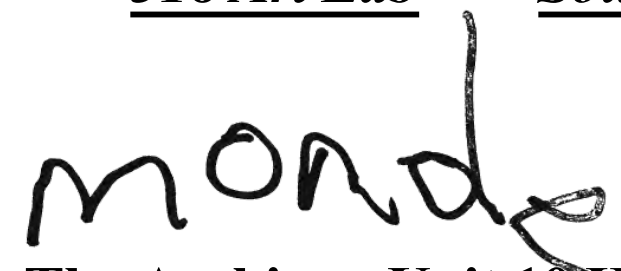
At Studio Monde, we partner with catering companies whose values align with ours — creative, sustainable, and community-minded. Our trusted partners, Grace & Skye and N5 Kitchen, curate original, seasonal menus for on-set and event catering using locally sourced, organic produce and low-waste, plastic-free practices. Together they deliver vibrant meals that nourish both people and planet.

N5 Kitchen Grace & Skye



318 Art Lab and Soup Lab, both based in the same building as us, have a combined 11 full colour and 1 b&w darkrooms, offering printing space for hire as well as film processing and darkroom printing services. We also stock film and photo paper supplied by our parent company, Paper Cut, with access to the widest range of papers and sizes possible. We offer small batches (25 or 50 sheets) of accurately pre-cut paper, ranging from 8x10 inches all the way up to 20x24 inches, in Fuji DP2, Pearl, Velvet, Maxima, and more.

318 Art Lab Soup Lab Paper Cut



The Archives. Unit 10 High Cross Centre. Fountayne Rd. London N15 4QN info@studiomonde.co.uk



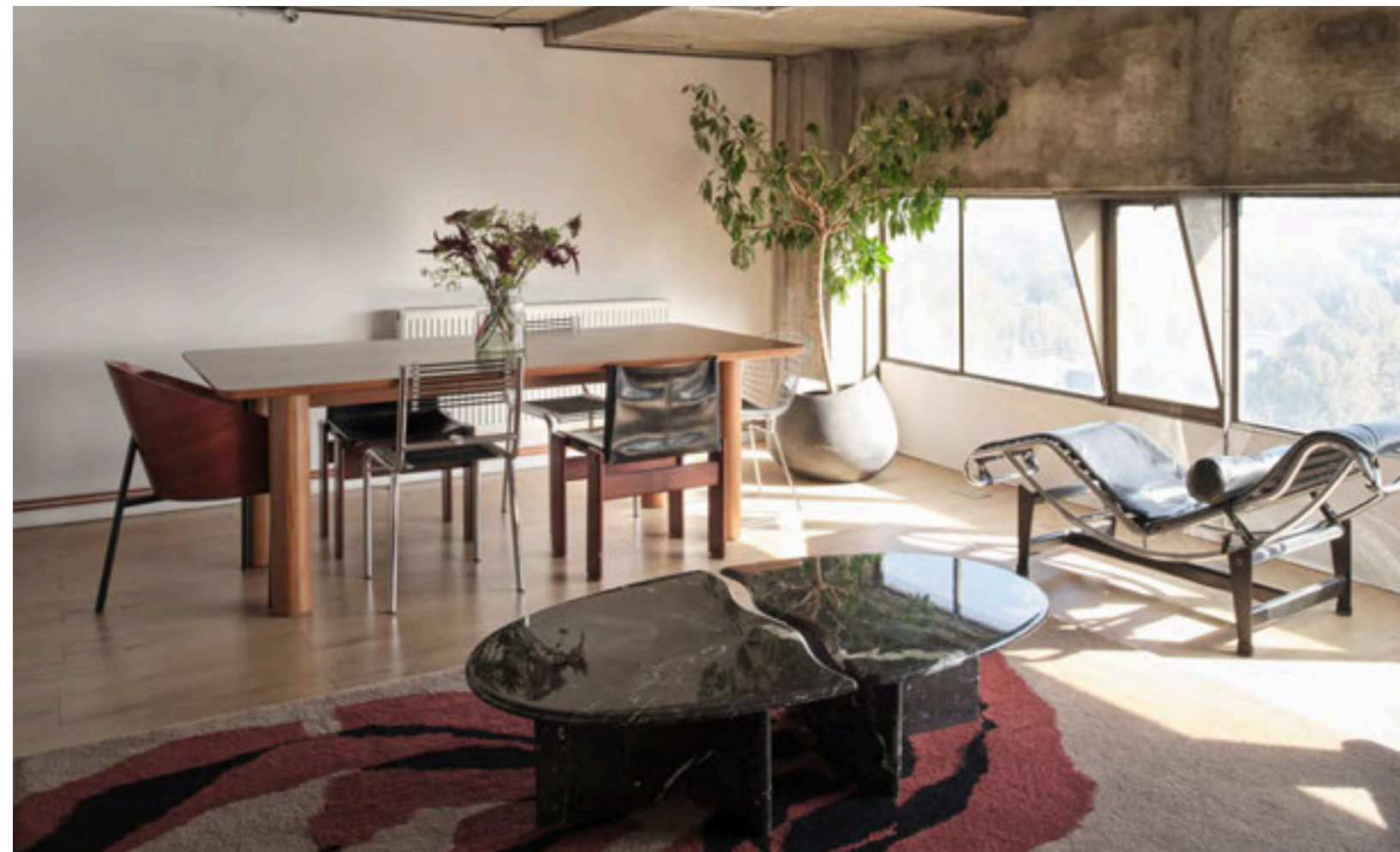
STUDIO 1 GALLERY



5.5 x 5.5 FLOOR TO CIELING COVE



SEPARATE BEAUTY AREA



MEZZANINE LEVEL CLIENT AREA



SEPARATE STYLING AREA

monde

STUDIO 2 GALLERY



BLACKOUT AND DAYLIGHT OPTIONS



ADJACENT TO STUDIO 1



MODULAR BEAUTY TABLE



CONCRETE FLOOR

monde

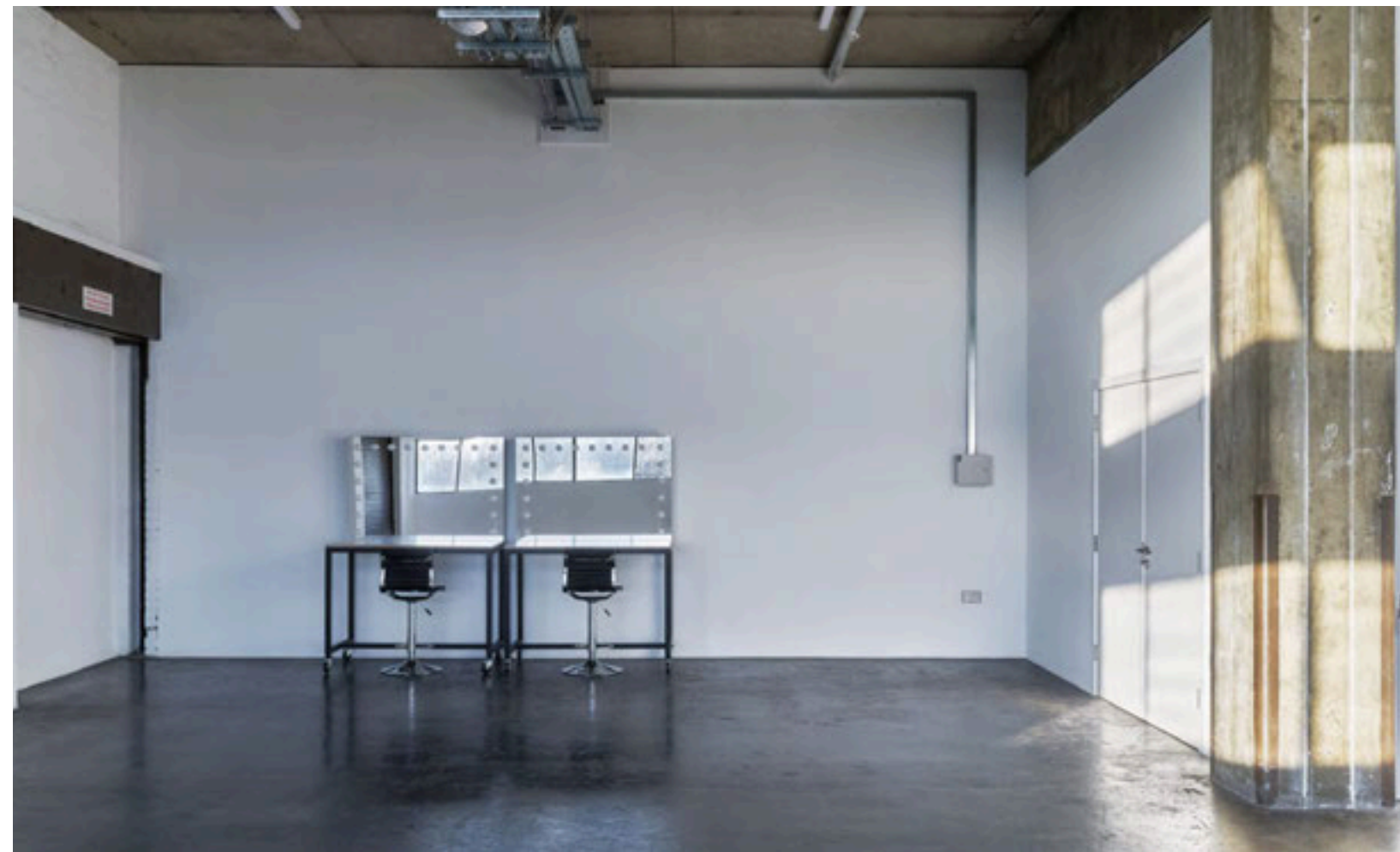
STUDIO 3 GALLERY



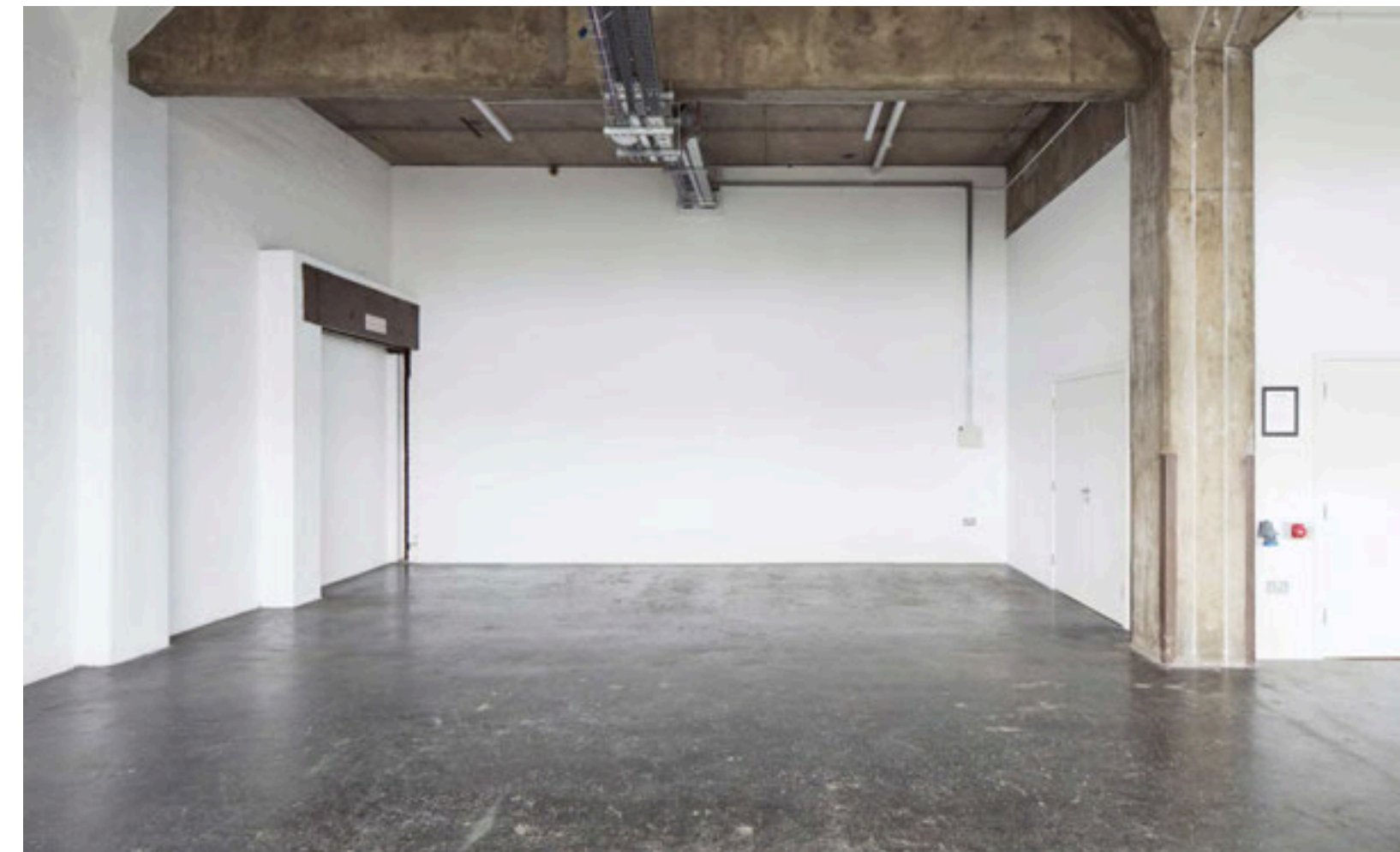
BLACKOUT AND DAYLIGHT OPTIONS



WHITE WALL, WHITE BRICK, INDUSTRIAL SHUTTERS



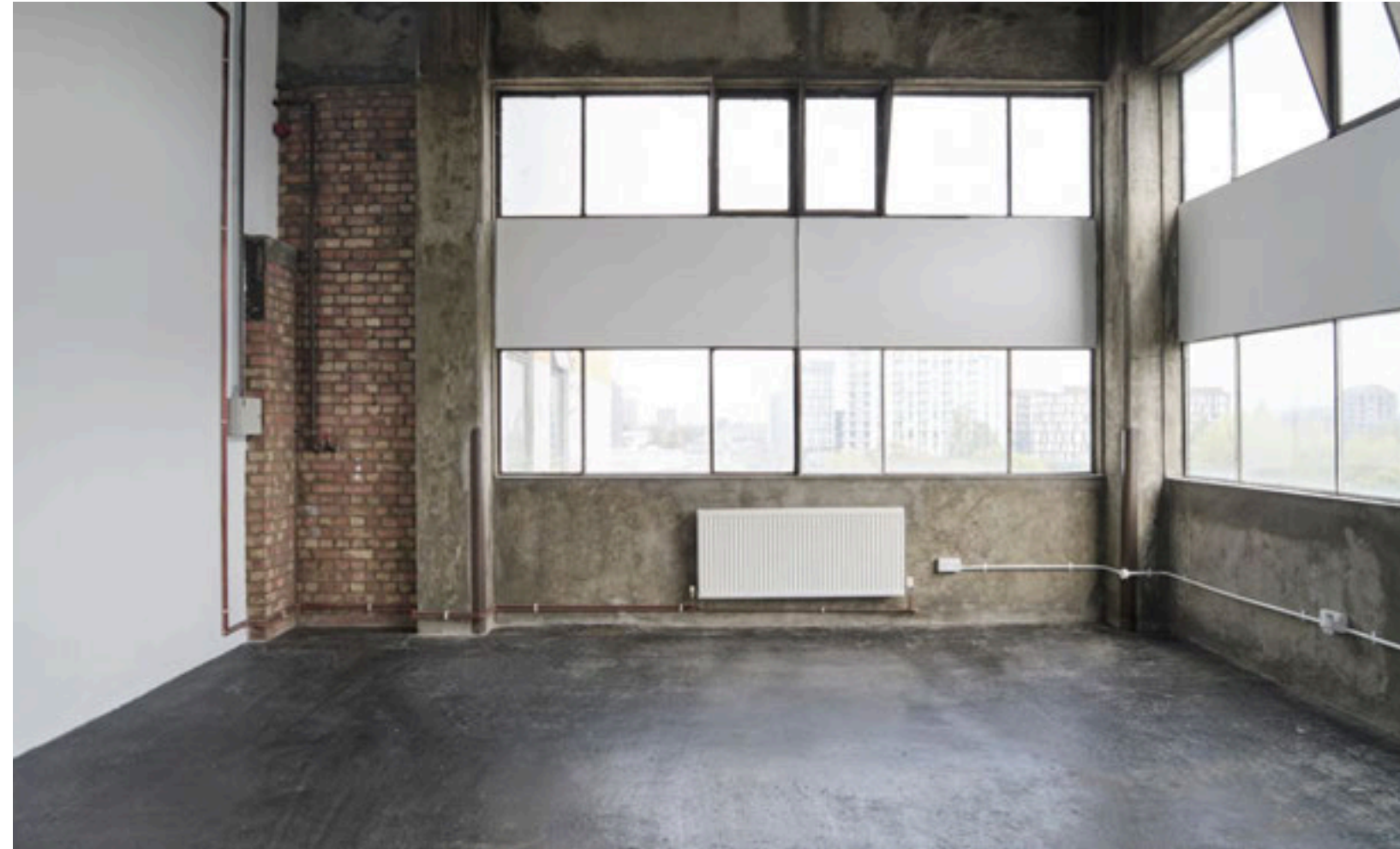
MODULAR BEAUTY TABLE



MULTIPLE SHOOTING WALLS

monde

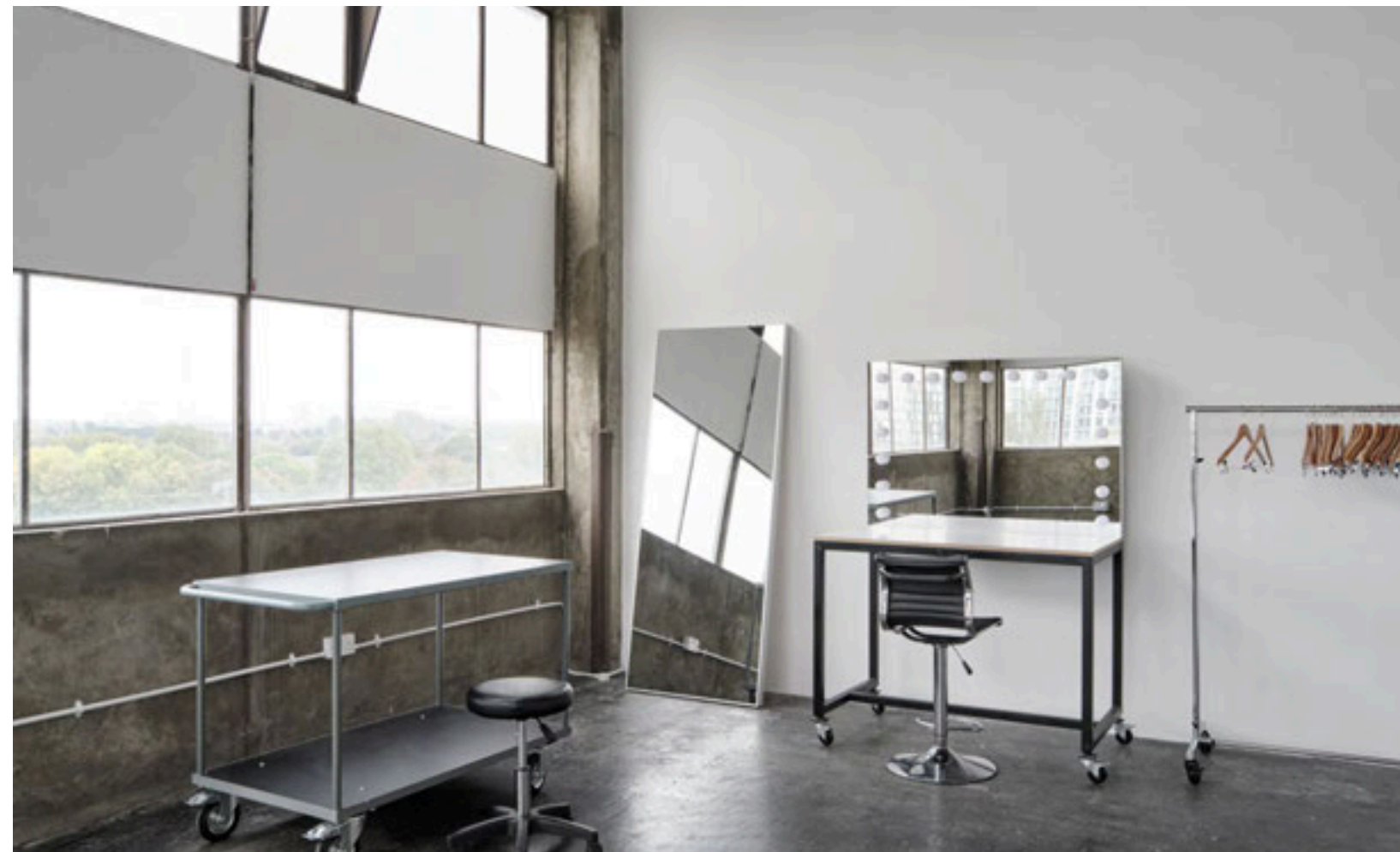
STUDIO 4 GALLERY



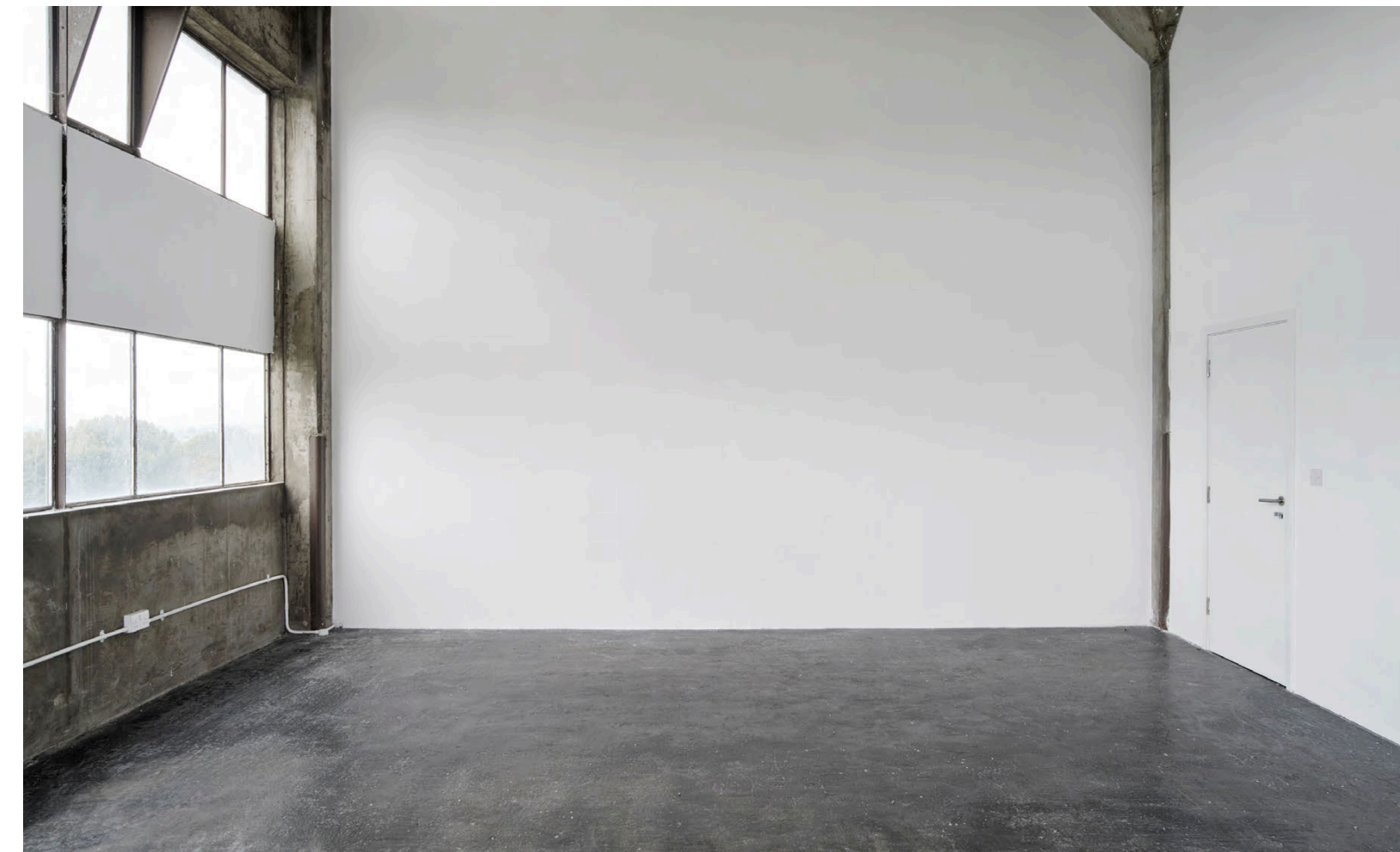
EAST AND NORTH FACING WINDOWS



CORNER DAYLIGHT



MODULAR BEAUTY AND STYLING TABLE



MULTIPLE SHOOTING WALLS

monde

STUDIO 1&2 GALLERY



5.5 x 5.5m COVE IN STUDIO 1



STUDIO 1 BEAUTY BAR VIEW INTO STUDIO 2



VIEW FROM STUDIO 2 INTO STUDIO 1



VIEW OF STUDIO 2

monde

STUDIO 1,2 & 4 GALLERY



5.5 x 5.5 FLOOR TO CIELING COVE



2 x MODULAR BEAUTY TABLES



CORNER DAYLIGHT



MEZZANINE LEVEL CLIENT AREA



SEPARATE STYLING AREA

monde

OUR CLIENTS

VOGUE

GO



JOSEPH

Wallpaper*

DOCUMENT

*Agent
Provocateur*



COS

DAZED

AnOther

L'OFFICIEL

MARFA
JOURNAL



ZARA

ISAMAYA



BY FAR

Calvin Klein

TEKLA

STUDIO
NICHOLSON

SONY MUSIC



BURBERRY

Charlotte Tilbury

NET-A-PORTER

BYREDO



PHOEBE
PHILO

ERDEM

monde

OUR CLIENTS

Josh O'Connor — Actor

Peggy Gou — DJ

Naomi Ackie — Actor

Romola Garai — Director & Actor

Amelia Dimoldenberg — Comedian

Noah Jupe — Actor

Ramla Ali — Boxer

Hannah Dodd — Actor

Mia Khalifa — Model

Joy Orbison — Musician

Tolu Coker — Fashion Designer

Priya Ahluwalia — Fashion Designer

Torishéju Dumi — Fashion Designer

...



monde

OUR CLIENTS

Camille Vivier
Benjamin Vnuk
Marc Hibbert
Maisie Cousins
Jack Day
Laura Coulson
Nigel Shafran
Charlotte Wales
Chris Rhodes
Frank Lebon
Zoe Natale Manella
Gwen Trannoy
Agnes Lloyd Platt
Jeff Boudreau
Daisy Walker
Lola Banet
Jack Day

...



monde