

# PROTECTING WHAT MATTERS.

Providing a comprehensive range of certified LPS 1175 and bespoke physical security solutions.

C-StP-V1-Jn26



# Our Sectors: Security Solutions Across Critical Sectors

Through bespoke design, flexible manufacturing and tailored security solutions, we can adapt to the specific operational and security requirements of most projects and applications.



## Data Centres

Protect uptime with **security designed for 24/7 environments**. **LPCB-rated systems, integrated access control and low-disruption installation** help minimise breaches and operational downtime.



## Utilities (Power, Water, Energy)

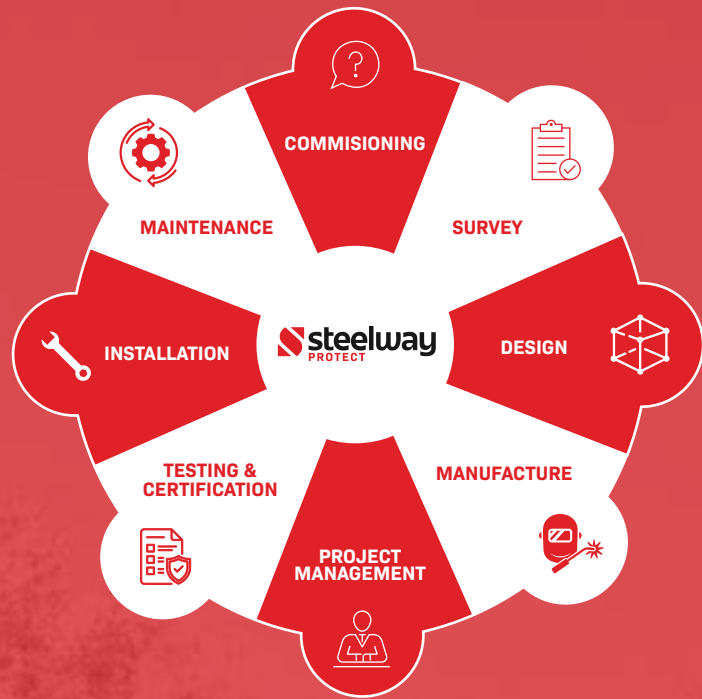
Secure critical infrastructure with **durable, compliant solutions**. High-security ratings and low-maintenance designs protect essential assets and ensure **long-term reliability**.



## Rail & Transport

Protect infrastructure with robust, compliant security solutions. Anti-tamper designs and fast installation helping to secure assets while minimising disruption.





## Introduction: Where Security Meets Excellence

**At Steelway Protect, a specialist division of the Steelway Group. We design, manufacture and install bespoke security solutions, backed by third party accreditation. Helping clients across a range of sectors to protect high value assets and vulnerable locations.**

We provide comprehensive turnkey solutions across a range of industry sectors, from utilities to commercial and industrial markets.

Our focus is on delivering bespoke physical security that combines operational functionality, technical compliance and aesthetics whilst delivering the assurance of the compliance with the LPCB's LPS1175 security standard.

**With almost a century of combined group expertise, we work to the most exacting standards to provide recognised security to the highest level.**



### Technical Support

We provide dedicated technical support to ensure **smooth project execution** and quick issue resolution.



### Stock Availability

We ensure **reliable stock availability** through efficient inventory management and prompt restocking.



### Quality Assurance

We guarantee **top-quality steelwork** through strict inspections and precision craftsmanship.



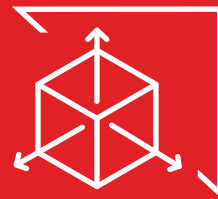
### Customer Care

We deliver responsive customer care focused on **clear communication** and lasting client satisfaction.



### UK Manufactured

We proudly manufacture all our products in the UK, ensuring superior **quality and local craftsmanship**.



### Made To Measure

We offer **made-to-measure solutions** tailored precisely to each client's specifications.



### Fast Delivery

We provide **fast, reliable delivery** to keep your projects on schedule.



### Group Solutions

We deliver group solutions through Northern Industries' combined **expertise and capabilities**.



### Maintenance Packages

Expert steel maintenance and services, for safe access and lasting performance.

## Our Guiding Principles

**Providing Fabricated Products to Our Customers For Nearly 100 Years.**

## Our Vision:

To lead the industry in engineered security solutions, protecting critical assets with precision, innovation and uncompromising quality.

## Our Values:

We deliver precision-engineered security solutions without compromise. Through innovation and efficient methods, we minimise disruption while maintaining the highest standards. From concept to completion, we provide dependable, end-to-end delivery tailored to our client's needs.

*Through quality, reliability and integrity, we build trust that lasts.*

## About:



**We deliver bespoke solutions designed to protect high-value assets across utility, commercial and industrial sectors.**

As a specialist division of The Steelway Group, we deliver turnkey solutions that simplify projects and reduce risk, from 3D scanning and design to manufacture and installation, improving efficiency and minimising disruption.

With decades of industry expertise, we provide high-performance, LPS1175 approved security solutions tailored to meet the demands of each project, balancing strength, durability and design.



### Site Survey

We offer site survey's to ensure that every project is tailored specifically to your needs.



### Assistance

We offer assistance with design and planning to streamline your project from start to finish.



### Project Management

We provide dedicated project management to ensure every stage runs smoothly and efficiently.



### Installation

We offer expert installation services to ensure every project is completed safely, efficiently and to the highest standard.



### Maintenance

We provide maintenance services to keep your installations performing safely and effectively long term.

## Contents: At A Glance

01 - 02	Introduction
03 - 04	Our Principles & Table Of Contents
05 - 06	Service Overview
07 - 08	LPCB & Accreditations
09	ProSafe Storage Unit
10	ProDoor
11 - 12	ProBar
13 - 14	ProFence
15 - 16	ProWalling
17 - 18	ProCover
19 - 20	ProCage
21 - 22	ProCabinet
23	Anti-Climb Barriers & ProRollerShutters
24	ProClamp & Powder Coating
25	Northern Industries
26	Group Capabilities & Sustainability

# Service Overview: Turnkey Solutions

**We provide comprehensive turn-key solutions for safe and efficient building access and security.**

Our fully integrated approach covers every stage of the process: from initial survey and bespoke design through to manufacture, installation and final handover. By managing each element in-house, we ensure consistency, quality and clear communication throughout. This seamless delivery model helps to reduce risk, improve efficiency and give you complete confidence from concept through to completion.



## Project Management

We provide dedicated project management to ensure every stage runs smoothly and efficiently. We offer expert installation services to ensure every project is completed safely, efficiently and to the highest standard.



## 3D Laser Scanning

We offer full site survey utilising the latest 3D laser scanning technology to ensure absolute precision for every custom fabrication.



## Survey & Design

We provide comprehensive site surveys to assess project requirements, site conditions and operational needs, ensuring every solution is accurately tailored for efficient installation and long term performance.



## Modular Off-Site Construction

We drive out inefficiencies by offering off-site construction and crane-in solutions, particularly for our modular kiosks and cages, allowing them to be fully assembled off-site for quick delivery, minimising site disruption.



## Installation

We provide expert installation services delivered by experienced teams, ensuring every project is completed safely, efficiently and to the highest standard with minimal site disruption.





## Fencing - ProFence

Robust steel fencing systems designed to provide effective perimeter security without compromising appearance. Available in a range of styles and specifications, they offer a durable, long lasting solution for protecting sites while maintaining clear boundaries and controlled access.

Pages 13-14

## Doors - ProDoor

Combining strength, security and reliability, our steel doors offer effective protection against unauthorised access without compromising functionality. Available in a range of configurations to suit varying operational and security requirements.

Page 10

## Barsets - ProBar

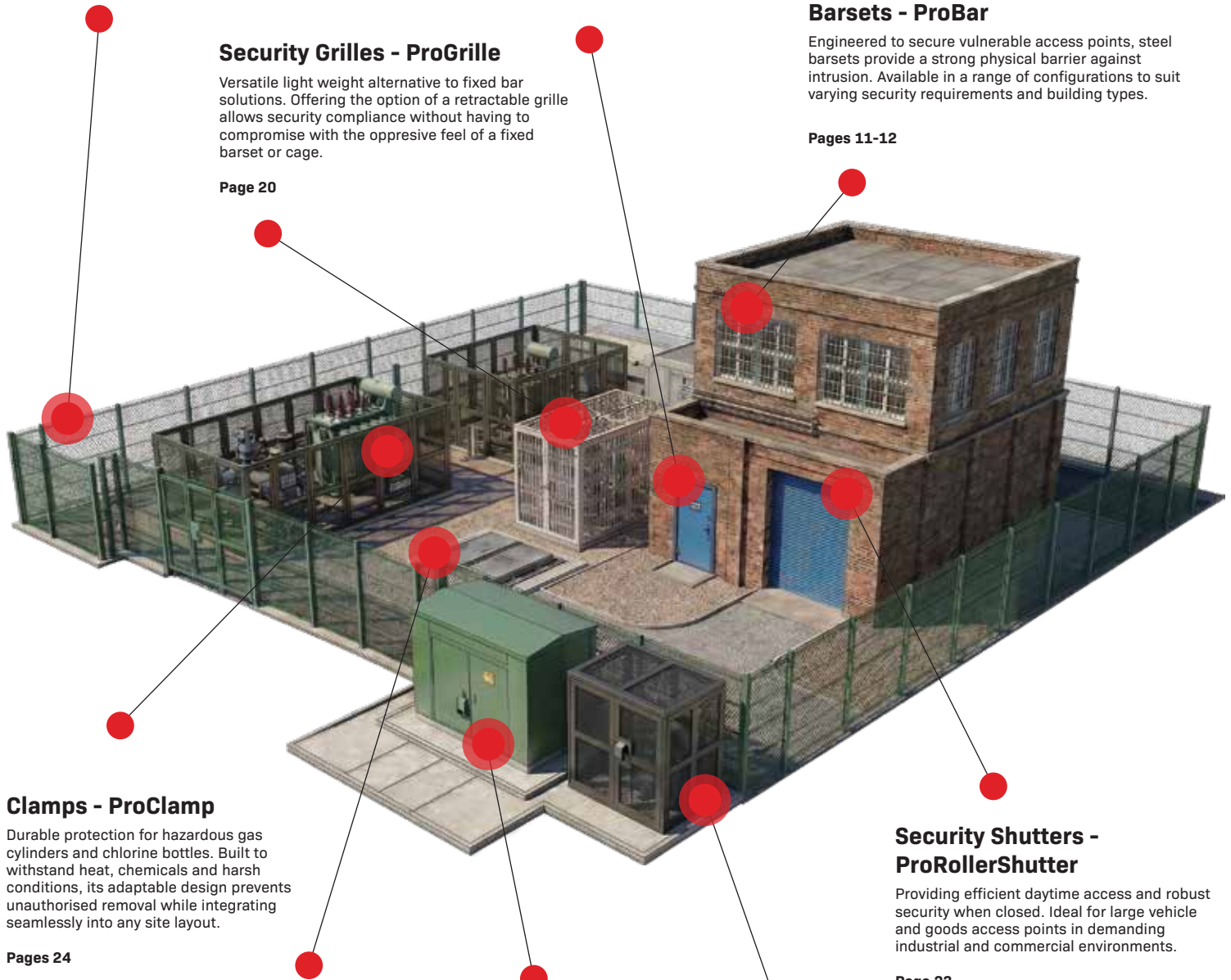
Engineered to secure vulnerable access points, steel barsets provide a strong physical barrier against intrusion. Available in a range of configurations to suit varying security requirements and building types.

Pages 11-12

## Security Grilles - ProGrille

Versatile light weight alternative to fixed bar solutions. Offering the option of a retractable grille allows security compliance without having to compromise with the oppressive feel of a fixed barset or cage.

Page 20



## Clamps - ProClamp

Durable protection for hazardous gas cylinders and chlorine bottles. Built to withstand heat, chemicals and harsh conditions, its adaptable design prevents unauthorised removal while integrating seamlessly into any site layout.

Pages 24

## Access Covers - ProCovers

Durable security access covers designed to protect critical underground infrastructure and control entry without compromising accessibility for maintenance teams.

Pages 17

## Kiosks & Cabinets - ProCabinet

Fully enclosed modular structures designed to protect critical external equipment. Delivered ready for installation to minimise site disruption, they feature robust weatherproofing and adaptable, secure access.

Pages 21-22

## Security Shutters - ProRollerShutter

Providing efficient daytime access and robust security when closed. Ideal for large vehicle and goods access points in demanding industrial and commercial environments.

Page 23

## Security Cages - ProCage

Modular security cages designed to protect internal assets and restricted areas. They provide flexible, scalable layout solutions that isolate sensitive equipment without compromising airflow or line of sight.

Pages 19-20

## Explore Our Full Product Range - [www.steelwayprotect.co.uk](http://www.steelwayprotect.co.uk)



Discover our full range of **LPCB Security Rated Storage Cabinets** (Pg 9), **Access Covers** (Pg 17-18) and **Bottle Clamps** along with **non rated door sets** and **Anti-Climb Barriers** (Pg 23) online, with detailed product information available now.

We can also provide **non-rated** and **fire rated alternatives** across our product range to suit specific project and compliance requirements.



# Our Credentials: LPCB Certification

Loss Prevention Certification Board (LPCB) Approved High Security Products to LPS 1175

**LPCB Certification provides independent, internationally recognised assurance that security products meet rigorous performance standards.**

Product Category	Product Name	A1 (SR1)	B3 (SR2)	C5 (SR3)	D10 (SR4)	E10 (SR5)	Pg
Barsets	ProBar		✓	✓	✓	-	11-12
Doors (Solid & Mesh)	ProDoor	✓	✓	✓	✓	✓	10
Cages	ProCage	✓	✓	✓	✓	-	19-20
Access & Covers	ProCover	-	-	✓	✓	-	17-18
Cabinets	ProCabinet	-	✓	✓	-	-	21-22
Fencing	ProFence	-	✓	✓	✓	-	13-14
Modular Walling	ProWalling	✓	✓	✓	✓	-	15-16
Clamps	ProClamp	-	✓	✓	-	-	24
Roller Shutters	ProShutter	✓	✓	✓	✓	-	23
Security Storage Unit	ProStore	✓	✓	✓	-	-	09

## Understanding LPS1175 Security Standards

LPS1175 security ratings **combine a tool category with an attack delay time** to indicate the level of protection a product can provide. For example, a product certified to B3 has been independently tested to resist an attack using tool category B for a minimum of 3 minutes. As the **rating increases, both the sophistication of the tools and the required resistance time become more demanding.**

## Security Ratings (Tool Set + Delay)

**Security ratings are based on two key factors: the tool set used during testing and the delay time achieved against attack.**

The letter classification (A-H) identifies the type of tools and attack team used, while the numerical rating (1-20) indicated the minimum number of minutes the product successfully delayed entry. Together, these **ratings help create layered security strategies** that slow attackers through multiple protective barriers.

Threat ↑	Extreme methods of access to very high value assets using portable tools.	H	H1	H3	H5	H10	H15	H20
	Enhanced professional attempts of access to high value assets.	G	G1	G3	G5	G10	G15	G20
	Professional attempts at forced entry into higher value storage areas.	F	F1	F3	F5	F10	F15	F20
	Experienced attempts at forced entry using tools of a greater battery power.	E	E1	E3	E5	E10	E15	E20
	Experienced attempts at forced entry.	D	D1	D3	D5	D10	D15	D20
	Deliberate forced entry using a wide selection of commonly available, relatively easily concealed tools	C	C1	C3	C5	C10	C15	C20
	More determined attack using easily concealed tools of a greater mechanical advantage.	B	B1	B3	B5	B10	B15	B20
	Low technology level of attack using small, very easily concealed tools	A	A1	A3	A5	A10	A15	A20
The Mark Of Effective Security		Tool Set	1	3	5	10	15	20
		Delay (minutes)	→					

# Our Credentials: Recognised Security

**Steelway Protect is committed to delivering solutions that meet the highest standards of physical security and compliance.**

Our products are rigorously tested and certified to Loss Prevention Certification Board (LPCB) standards, ensuring reliable defence against vandalism and theft.

Our bespoke security solutions are available in general purpose specifications or certified to physical security ratings, seamlessly integrating reliable defence against vandalism and theft.



## **Product Certification -**

Construct Product Certifications - EN1090 for CE Marking, Structural Components: EXC 3



## **Quality Management System -**

BSENISO 9001:2015. Certification Body: BSI, Approval No: FM1004



## **Health & Safety Management System -**

BSENISO 45001:2018. Certification Body: BSI, Approval No: OHS89170 (Bilston Road)



## **Integrated Management System -**

PAS99:2012. Certification Body: BSI. Approval No: IMR516887 (Bilston Road)



## **Construction Skills Certification Scheme -**

Construction Skills Certification Scheme: CSC00303



## **Contractors Health & Safety Assessment Scheme (CHAS) -**

Registration: 00043658



## **Constructionline -**

Constructionline. Product Registration: 46421



## **RISQS -**

RISQS (Rail Industry). Product Registration: 18677



## **Product Certification -**

Kitemark Approval to BSEN124. Certification Body: BSI, Approval No: KM56488



## **Product Certification -**

Kitemark Approval to BSEN 15312. Certification Body: BSI, Approval No: KM56488



## **Achilles UVDB -**

(Utilities Vendor Database) including British Energy Product Registration 75883 and UVDB Verify Certified B2

# Security Storage Unit: ProSafe Storage Unit



## Uncompromising Access Control

**Secure, certified storage designed to protect valuable assets in high-risk environments.**

Our LPCB security-rated storage units provide robust, purpose-built protection for tools, equipment, and sensitive materials. Engineered for strength and durability, they are ideal for both internal and external use, delivering reliable security while maintaining practical, everyday accessibility, with a Surelock McGill Moorgate Lock fitted as standard.



Product Category	Security Rating
Security Rated Cabinet - ProCabinet 1	A1 (SR1)
Security Rated Cabinets - ProCabinet 2	B3 (SR2)
Security Rated Cabinets - ProCabinet 3	C5 (SR3)



### Robust Construction

Manufactured using robust materials to deliver exceptional durability and long-term performance.



### Secure Access

Designed with integrated high-security locking options to protect valuable options.

# Security Doors: ProDoors



## Uncompromising Access, Control & Fire Protection

Protect critical access points with high-performance steel doors.

Designed for industrial, commercial and utility applications, our security steel doors deliver robust protection against forced entry while maintaining smooth day-to-day operation. Each solution is tailored to suit the specific demands of the site, ensuring a precise fit and seamless integration with wider security strategy.

Available in both solid & mesh construction.



Product Category	Security Rating
Security Door - Prodoor 1	A1 (SR1)
Security Door - Prodoor 2	B3 (SR2)
Security Door - Prodoor 3	C5 (SR3)
Security Door - Prodoor 4	D10 (SR4)
Security Door - Prodoor 5	E10 (SR5)



### Bespoke Manufacture

Custom-built to exact structural environments for both new build and retrofit applications.



### Hardware Integration

Compatible with a wide range of high-security locking systems with modern access control solutions.

# Barsets: ProBar



## Securing Vulnerable Openings

Protect your most vulnerable access points with certified, high-strength security that doesn't compromise light or ventilation.

Our LPCB-certified bar sets are engineered to provide a **robust physical barrier against intrusion**, making them ideal for securing windows and openings (including vent shafts and vulnerable building voids) across a range of environments. Designed with flexibility in mind, they can be seamlessly integrated into different building types while **maintaining a clean, functional appearance**.

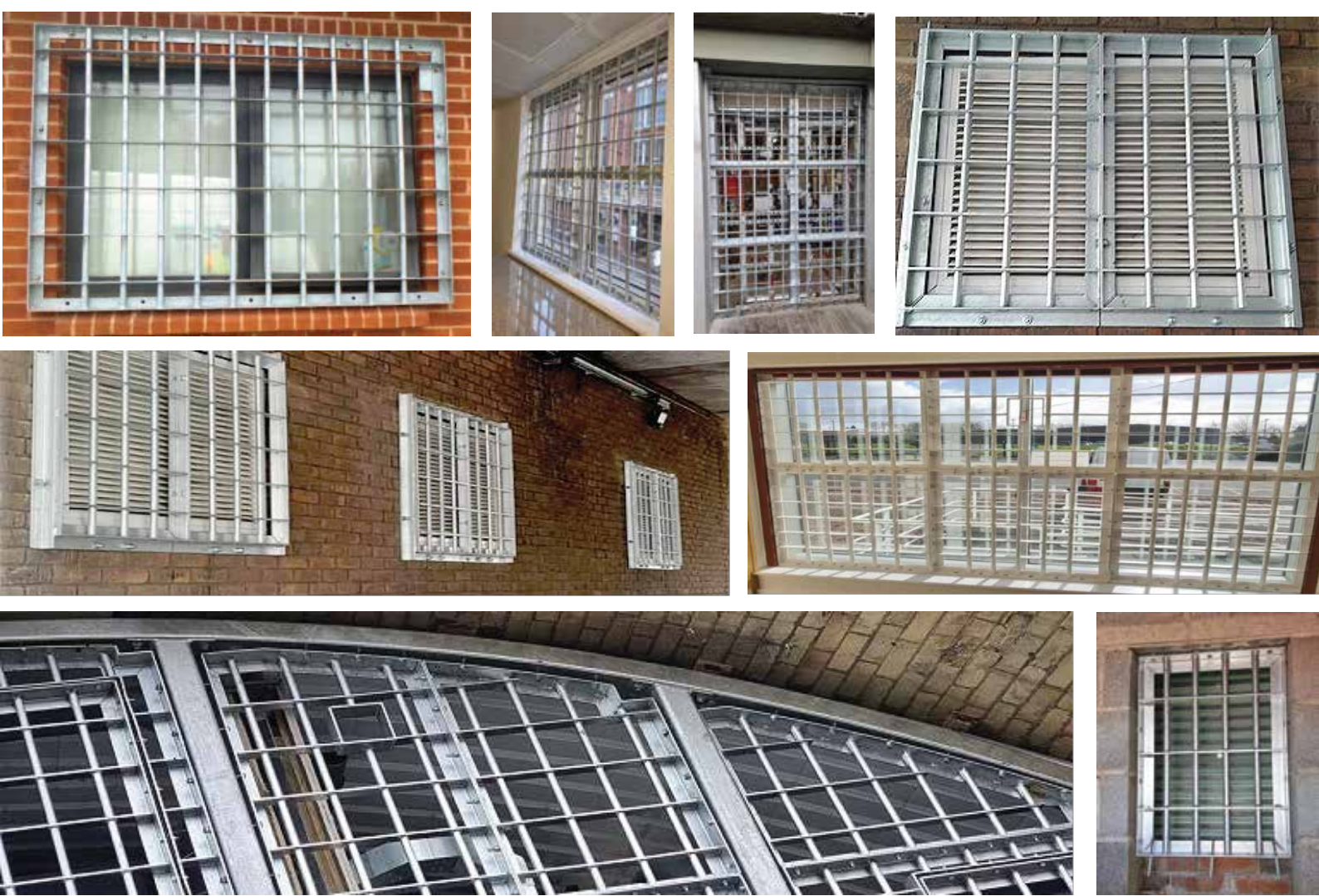
Manufactured for long-term durability, they can be finished to complement existing architectural style and project requirements.



Product Category	Security Rating
Barsets - ProBar 2	B3 (SR2)
Barsets - ProBar 3	C5 (SR3)
Barsets - ProBar 4	D10 (SR4)



# Barsets: ProBar



### Flexible Installation

Available in face-fixed and reveal-fixed options to suit a variety of structural environments.



### Durable Finish

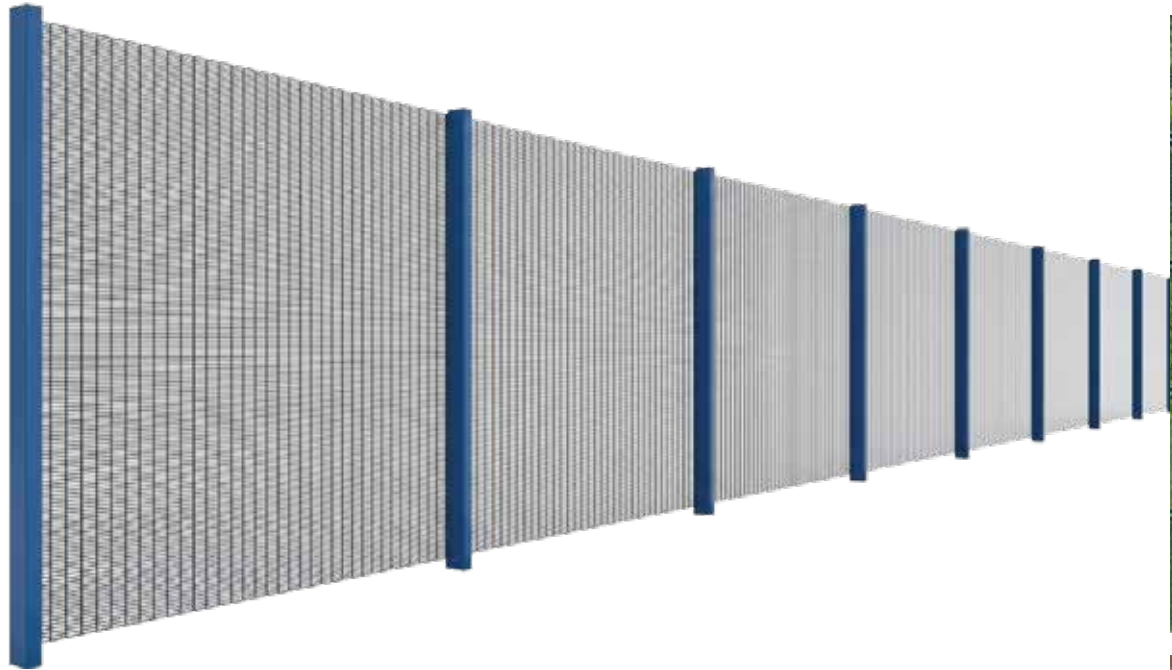
Galvanized, powder-coated and marine grade finishes available for enhanced longevity and visual integration.

**For more information on our security solutions:** Including bespoke options and specifications, email us at: [Protect@steelway.co.uk](mailto:Protect@steelway.co.uk) or phone: **01902 921 525**

**12 || Protect || LPCB Barsets**



# Security Fencing: ProFence



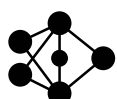
## High-Performance Perimeter Defence

**Establish a strong first line of defence with perimeter protection built to deter and delay intrusion.**

Our high-performance security fencing systems are designed to secure high-value sites, combining strength, durability and seamless integration with wider security measures to create a complete perimeter solutions. Engineered to deter, delay and resist unauthorised access, each system is tailored to site-specific requirements, ensuring effective protection without compromising functionality or appearance.

Product Category	Security Rating
Security Fencing - ProFence 1	A1 (SR1)
Security Fencing - ProFence 2	B3 (SR2)
Security Fencing - ProFence 3	C5 (SR3)
Security Fencing - ProFence 4	D10 (SR4)

# Security Fencing: ProFence



## Total Integration

Designed to integrate with security gates, access control systems and anti-climb solutions.



## Built To Last

PPC galvanized for maximum corrosion resistance, ensuring long-term performance with minimal maintenance.

**For more information on our security solutions:** Including bespoke options and specifications, email us at: [Protect@steelway.co.uk](mailto:Protect@steelway.co.uk) or phone: **01902 921 525**

14 | Protect | LPCB Security Fencing

14

# Modular Walling Solutions: ProWalling



## Solid Walling Systems

**Enhanced protection with robust, high-security walling to strengthen existing structures and create secure internal environments.**

Our solid walling systems provide enhanced protection for high-risk areas, enforcing existing assets or forming secure internal/external partitions. Designed with modular construction, they can also be used as an internal cladding system to discreetly upgrade existing building fabric with an internal layer of security.

Their flexible design allows efficient installation while delivering durable, long-term protection with a clean, professional finish.



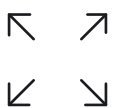
## Mesh Walling Systems

**Secure assets while maintaining visibility and airflow with flexible, high-performance mesh walling solutions.**

Our mesh walling systems provide versatile primary and secondary layers of security, suitable for everything from singular linear runs to complex enclosed configurations. Designed for environments where airflow and visibility are essential, the modular systems enables quick installation and adaptability, making it ideal for securing equipment, internal zones and restricted areas without the need for a full solid enclosure.

Product Category	Security Rating
Mesh Walling System - ProWalling 1 (Modular)	A1 (SR1)
Mesh Walling System - ProWalling 2 (Modular)	B3 (SR2)
Mesh Walling System - ProWalling 3 (Modular)	C5 (SR3)
Mesh Walling System - ProWalling 1	A1 (SR1)
Solid Walling System - ProWalling 2	B3 (SR2)
Solid Walling System - ProWalling 3	C5 (SR3)
Solid Walling System - ProWalling 4	D10 (SR4)

# Modular Walling Solutions: ProWalling



## Flexible Application

Suitable as a primary or secondary layer of security depending on site requirements.



## Bespoke Configuration

Customised to suit individual layouts, with options for single or double doors and secure locking systems.

**For more information on our security solutions:** Including bespoke options and specifications, email us at: [Protect@steelway.co.uk](mailto:Protect@steelway.co.uk) or phone: **01902 921 525**

16 || Protect || Modular Walling Systems

# 16

# Hinged Access Covers: ProCover



## Protecting Critical Underground Assets

**Protect critical underground infrastructure with secure, durable access solutions designed to control entry without compromising accessibility.**

Our security access covers are engineered for utility networks, vaults and below-ground environments, providing robust protection against unauthorised access while ensuring safe and practical use for maintenance teams. Designed to withstand demanding conditions, they offer reliable performance in both high-traffic and exposed locations.

Product Category	Security Rating
Hinged Access Cover - ProHatch 4 (Defender SEC4)	D10 (SR4)
Hinged Access Cover - ProHatch 3 (Multi-Guard 3)	C5 (SR3)
Hinged Access Cover - ProHatch 3 (Sentry)	C5 (SR3)
Hinged Access Cover - ProHatch 4 (Sentry)	D10 (SR4)

# Hinged Access Covers: ProCover



## Design Options

Offered in flush or upstand configurations to suit environmental and site requirements.



## Finish Flexibility

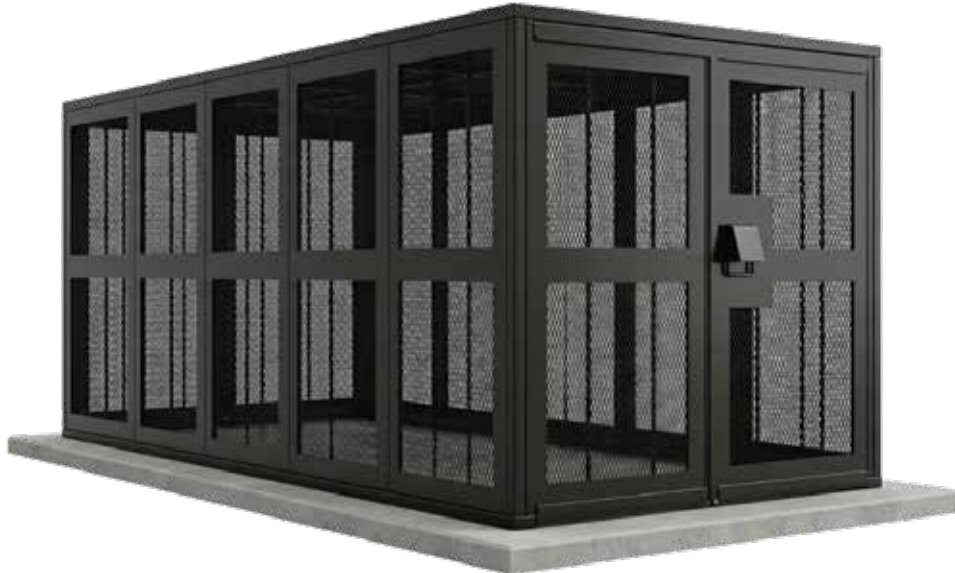
Available in a range of durable, slip-resistant finishes for long-term performance.

For more information on our security solutions: Including bespoke options and specifications, email us at: [Protect@steelway.co.uk](mailto:Protect@steelway.co.uk) or phone: 01902 921 525

18 || Protect || Hinged Access Covers

# 18

# Security Cages: ProCage



## Protecting Critical Internal Assets

**Securing internal assets with robust, high-strength enclosures designed for flexibility and control.**

Our security cages are ideal for protecting equipment, plant and restricted areas within buildings. Designed with a modular approach, they can be configured to suit a wide range of layouts, providing a practical and scalable solution for isolating sensitive assets while maintaining accessibility where line of site or airflow can not be compromised.

**Available in both solid & mesh construction.**

---

Product Category	Security Rating
Security Cage - ProCage 1 (Mesh panel system)	A1 (SR1)
Security Cage - ProCage 2 (Mesh panel system)	B3 (SR2)
Security Cage - ProCage 3 (Mesh panel system)	C5 (SR3)

# Security Cages: ProCage



## ProGrille



### Retractable Security Grilles

**Robust protection for vulnerable openings without restricting visibility or airflow.**

Designed for internal and external applications, steel security grilles provide a durable barrier against unauthorised access while maintaining a clean, practical appearance.

Product Category	Security Rating
Security Grilles - ProGrille 2	B3 (SR2)
Security Grilles - ProGrille 3	C5 (SR3)



#### Bespoke Configurations

Tailored to site-specific requirements with flexible sizing and secure access options.



#### Modular Designs

Easily adapted, extended or reconfigured to suit changing operational needs.

**For more information on our security solutions:** Including bespoke options and specifications, email us at: [Protect@steelway.co.uk](mailto:Protect@steelway.co.uk) or phone: **01902 921 525**

20 || Protect || Security Cages || Grilles

# 20

# Cabinets & Kiosks: ProCabinet

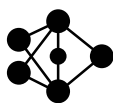


## Secure Enclosures For Critical Infrastructure

Protect external equipment with fully enclosed, modular structures designed for durability and performance.

Our modular buildings provide secure housing solutions for infrastructure and critical systems, ranging from compact enclosures to fully functional kiosks. Many units are manufactured off-site and delivered ready for installation, reducing disruption on site and installation time. Optional keyed access doors can be integrated as an alternative to padlockable doors, while EPDM-lined roofs provide enhanced weather protection. Textured paint finishes are also available for added durability and visual integration.

Product Category	Security Rating
Security Rated Cabinets - ProCabinet 2	B3 (SR2)
Security Rated Cabinets - ProCabinet 3	C5 (SR3)
Security Rated Cabinets - ProCabinet 4	D10 (SR4)



### Comprehensive Range

From small enclosures to fully equipped modular kiosks and housings.



### Off-Site Construction

Designed for crane-in delivery, minimising disruption and accelerating installation.

# Cabinets & Kiosks: ProCabinet



## Product Variables:

				
Kiosks & Solid Wall Systems	Sample Tap Boxes	Security Boxes	Security Panels	Network Cable Kiosk

For more information on our security solutions: Including bespoke options and specifications, email us at: [Protect@steelway.co.uk](mailto:Protect@steelway.co.uk) or phone: 01902 921 525

22 II Protect II Cabinets & Kiosks



# Security Roller Shutters: ProRollerShutters



## Secure Operational Access

**Efficient, reliable access during the day with robust, uncompromising security when it matters most.**

Our roller shutters are designed for facilities requiring large, secure access points for vehicles and goods. Built for durability and ease of use, they deliver reliable performance in demanding industrial and commercial environments while maintaining strong protection when closed.



### Smooth Operation

Engineered for consistent, reliable use in high-traffic environments.



### Robust Construction

Built from high-strength materials to provide enhanced durability and resistance to forced entry.

# Climb Barriers: Anti-Climb Barriers



## High-Impact Climb Prevention

**Effective, rotating protection designed to prevent unauthorised access over walls, fences and perimeter structures.**

Our rotating, spiked tubular design prevents grip and stability, making climbing extremely difficult. Manufactured from galvanized steel, provides durable, low-maintenance protection of installations.



### Rotating Deterrent

Free spinning design prevents grip and climbing attempts.



### Durable Construction

Galvanized steel ensures long-term, low maintenance performance.

# Clamps: ProClamp



An example of ProClamp in an external application.

An example of ProClamp in an internal application.

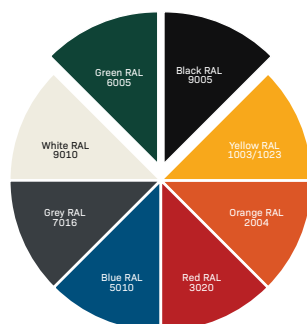
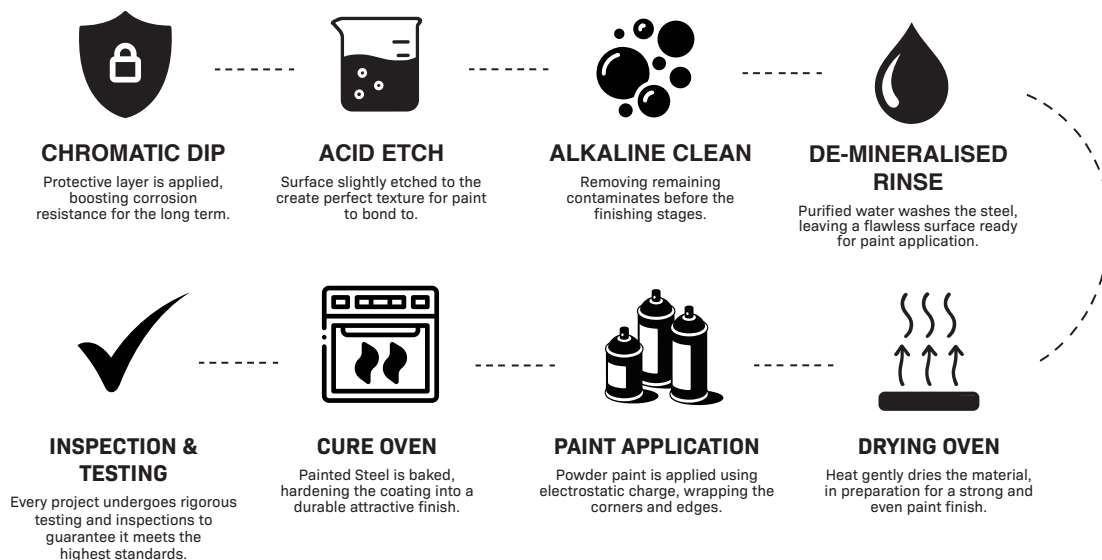
## Built For Secure Protection

Designed to secure hazardous gas cylinders with strength, safety and durability in demanding environments.

The ProClamp range is engineered to provide dependable protection for chlorine bottles and other gas cylinders in both internal and external applications.

Manufactured from highly durable materials and built to withstand heat, chemical exposure and harsh conditions, ProClamp helps prevent unauthorised removal while keeping cylinders securely in place. It's adaptable design allows seamless integration into a wide range of site layouts, delivering enhanced safety, security and long term value.

# Our Processes: Powder Coating



## RAL Colours

RAL colour finishes provide durable, high-quality coating that enhances appearance and protection.

A range of RAL colours are available to suit project requirements, while selected products can also be supplied with a galvanized finish for long-term corrosion resistance.

# The Essentials: Northern Industries Group

**Northern Industries Group is a UK steel engineering group delivering high-quality, precision-fabricated solutions for demanding industries nationwide.**

Founded in 2019, we have built a strong national presence with multiple locations, across the Midlands, North East and South of the UK. Our capabilities include bespoke steel fabrication, structural solutions and engineered products, allowing us to support complex projects with reliability, expertise and consistent quality.

## 18

### Installation Teams

Our experienced installation teams ensure safe, efficient project delivery.

## 4

### Factories

Our four factories provide the capacity and capability to deliver high-quality steel solutions at scale.

## 284, 800sq ft

### Total Factory Size

Our combined 284,800 sq ft of factory space enables high-capacity, efficient steel fabrication.

## 24

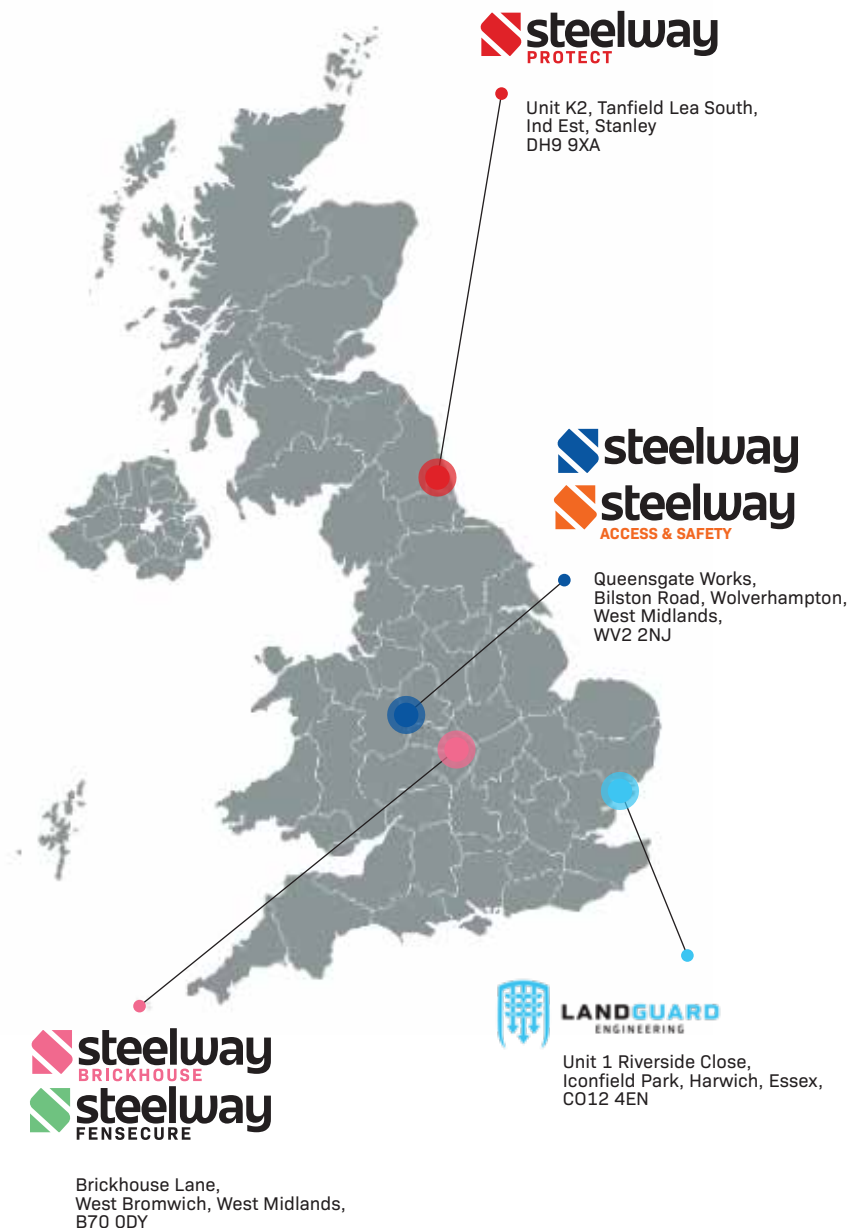
### Vehicles

Our vehicle fleet supports efficient nationwide delivery and installation.

## 20

### Design Engineers

Our team of 20 design engineers delivers innovative, precise steel solutions.



# Northern Industries : The Group



## Our Contributions: Sustainability

**Sustainability is central to our manufacturing approach, through responsible production practices, we reduce environmental impact while delivering high quality, compliant products built for longevity.**

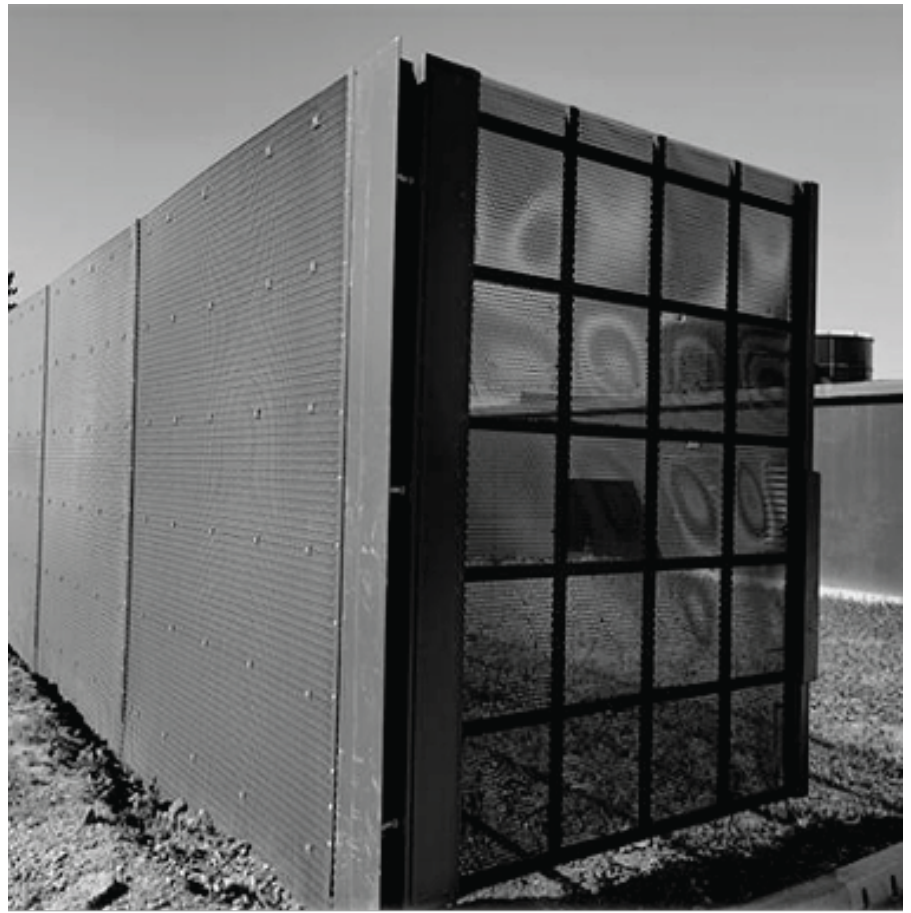
All products are designed with sustainability in mind, prioritising durability to extend lifecycles and minimise waste. By focusing on considered material selection, efficient processes and strict adherence to industry standards, we support a more environmentally responsible metal fabrication sector while helping customers achieve their own sustainability goals.

---

## Green Steel

**Green steel is a sustainable, low-emission alternative that maintains the strength, durability and performance of traditional steel while reducing environmental impact.**

Available in a range of grades and sizes, green steel provides a flexible solution for a wide variety of applications without compromising quality, reliability or long-term performance. It's reduced embodied carbon makes it an ideal choice for projects focused on sustainability, environmental compliance and future-focused infrastructure development.



[www.steelwayprotect.co.uk](http://www.steelwayprotect.co.uk)  
[Protect@steelway.co.uk](mailto:Protect@steelway.co.uk)  
01902 921 525



**Find us here:**  
Unit K2, Tanfield Lea South Ind Est  
Stanley, DH9 9XA