

# CASE STUDY

Multi-tenanted office building

Southampton • Hampshire • South-East England

## BUILDING

Kenneth Dibben House (KDH) is situated in the University of Southampton Science Park and is a two-floor, 5,000 sq ft multi-tenanted property with a standing seam Kalzip roof. The property experiences high energy consumption during office hours due to the research labs and offices situated inside the building.

## SOLUTION

Absolar identified the building as suitable for solar as part of a wider portfolio remote solar assessment, showing high feasibility to install rooftop solar panels with an estimated payback period of less than 5 years.

For this project Absolar has optimised the solar system design by utilising the curved roof of this property, enabling solar panels to face multiple orientation, harvesting solar generation throughout the day to match the business operating hours.

## BENEFITS

- 1. Energy cost saving** — After the first year of installation, when the energy production and consumption data were assessed, it was concluded that 76% of the building's energy requirements are fulfilled with the renewable solar energy produced.
- 2. Payback period** — Due to the high self-consumption of the produced solar energy, the property has a short payback period of around 3 years.
- 3. Export management and energy monitoring** — Absolar facilitated the implementation of export management, enabling our client to sell the unused energy generated by the PV system. Additionally, Absolar designed a customised dashboard that allows building occupants and our client to monitor real-time solar production.



## AT A GLANCE

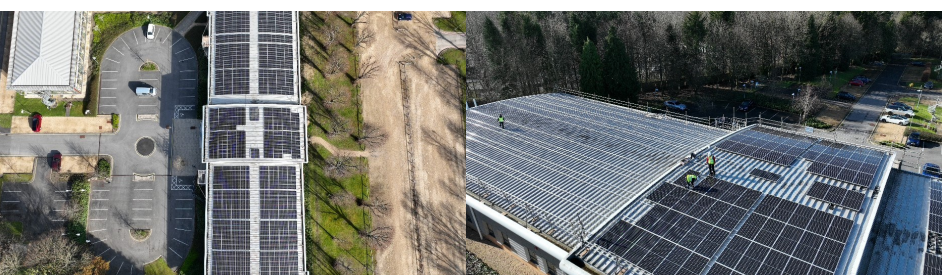
- 235 kWp solar system
- 522 Solar panels
- Installed in April 2022
- Energy saving: 200,000 kWh/year
- CO2 saving: 50 Tonnes / year
- Custom branded dashboard



**Stuart Perry**

Options Director

"Absolar gave us a rundown of what they thought as a best way to go. They are tremendous, they are energetic, they are passionate about what they do, working with them was a great opportunity for both of us."



Request your own remote survey:

[www.absolar.co.uk/find](http://www.absolar.co.uk/find)



**ABSOLAR**

02382 680106

[info@absolar.co.uk](mailto:info@absolar.co.uk)