

Uncommon Projects



**Kitchens, furniture and
homewares of uncommon
character and quality.**



Let's talk about your home. The place where everything and everyone comes together. The heart of your daily life. Now imagine it designed with the vision of an architect, the precision of an industrial designer and the care of someone who understands how you live...or how you want to live in the future. That's what we do here at Uncommon Projects.

We're the British design company that pioneered modern plywood kitchens. Since 2011, we've been working with clients and architects across the country to transform the way people live. We approach each project with sensitivity, planning spatial flow, integrating existing features and tailoring layouts to each home. Every kitchen and piece of furniture is detailed to suit the character of the space and the needs of its users.

In our workshop, we combine digital manufacturing with traditional joinery, working exclusively in plywood. Its structural integrity allows for secure, lasting fixings, making it ideal for refined detailing and long-term use. The result is furniture that is beautifully expressed and rigorously made, here in the UK.

We believe true quality reveals itself through the feeling of using something every day. It's not an aesthetic, it's a sensation. The reassuring thud of a well-made door, the confidence of a favourite pen or the balance of a perfectly weighted knife. It offers a quiet reassurance that comes from thoughtful design and dependable function.

That's what drives us. The result is more than just beautiful furniture, it's adding quality to our customers' lives. It's proven through years of use in the hundreds of homes we've transformed, and in the quiet satisfaction our clients tell us about long after installation.

— The Uncommon Projects team



Case study 46 | Bespoke
A bespoke plywood kitchen for
a grand Victorian farmhouse
5



Case study 24 | Core
Thoughtful
planning of our
Core system to
make the most of a
challenging space
9



Journal | Ethos
What we stand for: the story
behind Uncommon Projects
29



Styles
From exposed ply to seamless
minimalism, choose from our four styles
33



Journal | Our products
Bespoke vs Core: which
kitchen is right for you?
14



Case study 41 | Bespoke
A family kitchen with bespoke joinery
that defines the space
17



Workshop
Everything is
made by us.
Here in the UK
41



Case study 33 | Bespoke
Modern plywood joinery in
conversation with a historic
coach house
38



Objects
Our collection of furniture
and homewares. Designed
by us or in collaboration with
our uncommon friends
20



Case study 46 | Bespoke
An open-plan kitchen that
responds to the architecture
25

Showroom
Come and meet us in our
London showroom
47



We pioneered modern plywood kitchens.

Founded in 2010, we pioneered the modern plywood kitchen, combining architectural clarity with precision joinery to redefine how furniture is built into the home. Today, we continue to integrate design and manufacturing to create kitchens, furniture and homewares of uncommon character and quality.

Case study 46 | Bespoke

A bespoke plywood kitchen for a grand Victorian farmhouse

In this intriguing period property, our bespoke plywood cabinetry demonstrates its enduring versatility. With its towering 3.65 m ceilings, diamond-pattern leaded windows, painted brick walls and matchboarding, the space combines grandeur with warmth and character. A traditional Shaker style would have been expected in a house like this; instead, the client trusted us to complement the architecture with a contemporary plywood design.

1/10



When the family first moved in, the original kitchen occupied the same room but felt confined. A vast chimney breast housing an Aga dominated one wall, with the working area awkwardly squeezed beneath the windows. Despite the generous proportions, the usable space was tight, with a dining table in the centre and a sofa tucked beneath the stairs.

Working with architects Theis and Khan, the clients removed the chimney entirely, which was an inspired decision that unlocked the room's potential and allowed us to introduce a central island and cabinetry beneath the staircase. Early discussions focused on whether the island should hold the sink or the hob. We often advise that the sink (typically the messiest zone) is placed against the wall, leaving the island for cooking as a more engaging, social focal point.

Tall fridge and oven housings now sit under the stairs, where our minimal Linear cabinetry style responds to the geometry above. Elsewhere, our trademark Edge style reveals materiality and adds warmth suited to the home's period charm. The oak-veneered birch plywood used throughout feels timeless in this setting.

Under the window, we designed a practical touch-down area that supports the family's everyday routines: a bank of drawers and cupboards providing space to drop keys and mail upon entering. It's one of many details that make the kitchen feel connected to the rhythms of daily life.

The floor was also completely reimagined. After installing underfloor heating, terracotta-coloured porcelain tiles were laid, a practical and contemporary nod to the old quarry tiles in the hallway beyond.

Although the kitchen is unmistakably modern, it preserves the spirit of the original house.







Our architectural approach defines the flow and logic of your space.

Every project presents a spatial and functional challenge, from working with irregular layouts to finding opportunities for storage and improving circulation. Over the years, we've developed an approach rooted in architectural thinking and spatial planning. Through close collaboration, we shape spaces that respond to the architecture and enhance the way they're used.

This way of thinking continues to guide everything we do, refined through years of experience and design feedback.

Case study 24 | Core

Thoughtful planning of our Core system to make the most of a challenging space

Situated in the rear return of an East London flat, this contemporary kitchen demonstrates our Core system, a modular range of parametric cabinet designs that achieves a lower cost than our Bespoke service. Each unit can be custom sized to ensure a perfect fit, crucial in a Victorian property with its original chimney breast still in place.

2/10



The challenge was to work with, rather than around, this feature, making sure it didn't feel like an obstacle that compromised the design. We achieved this by fitting the tall fridge freezer and oven stack into the recess on the right-hand side, stepping it back.

Every Uncommon project is unique. Our **Case studies** tell the full story of the homes we've transformed.

See them all
uncommonprojects.co.uk/case-studies



Instead of using traditional wall units, we recessed an open shelving unit in the alcove to the left, providing the clients with space to store and display cookbooks, ceramics and plants. An opportunity to further personalise the space.

Birch plywood cabinets with oak-veneered wall units, kickboards and end panels are finished in a cool shade of Mushroom, the wall colour matched for a unified finish. Bold flashes of Sienna Red break up this muted scheme, used across the full-height cabinets for real impact. Both colours are part of the extensive Core range. Forbo linoleum flooring brings the entire palette together while lending the room a soft, cosy feel.





White Corian worktops were installed to draw as much light as possible into this relatively dark space, the surface stepped around the low window sill to manage what could have been a tricky interface. The extractor fan, often an awkward necessity, has been neatly housed in a minimal wall cabinet, this sleek addition helping to visually balance storage on this side of the room.

Core proved to be the ideal choice for the space and budget, making the most of a space with a unique set of challenges that required careful design and precise manufacturing.

CS24 | Details

Product: Core

Colours and finishes: Mushroom, Sienna Red and oak veneer

Style: Overlay

Handles: Recessed Round

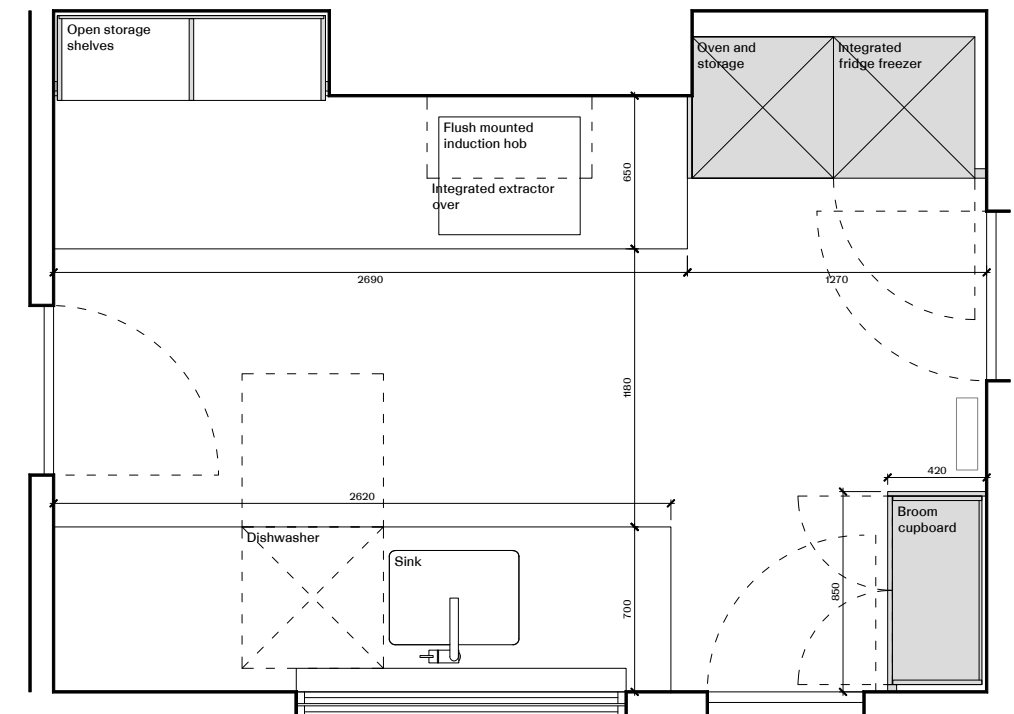
Appliances: Neff

Tap: Grohe Minta

Sink: Franke Kubus

Worktop: Corian White

Floor: Forbo linoleum





Opposite: Core is available with a range of recessed or surface-mounted handles, or you can specify your own to suit your design.

Below: Our signature drawer dividers combine precision and durability. Over the past decade, we've refined every detail to keep everything beautifully organised.



Bespoke vs Core: which kitchen is right for you?

Whether fully managed or supply-only, all our kitchens are Uncommon quality.



At Uncommon Projects, every kitchen we design is built on our signature precision-engineered plywood chassis. The difference between Bespoke and Core lies in how the project is delivered, and how much of it you want to manage yourself. We explain the differences in service, materials, style and cost, so you can decide which route is right for you.

What's the difference?

At the heart of it, the biggest difference between Bespoke and Core is the level of service. Both routes include a dedicated kitchen design process. We'll plan your layout, recommend your cabinetry and help you choose your finishes. The key difference is what happens beyond the design stage.

Core is supply-only. We don't visit site, manage the project or install the kitchen. You or your project team will take care of those elements. It's ideal for confident renovators and those with a trusted contractor in place.

Bespoke is our end-to-end fully-managed service. From site visits and surveys to project coordination and installation, we handle every detail. If you want a seamless process or have a complex space to work with, this is the route for you.

There are also some key differences in the materials and design process:

Service

Both Core and Bespoke include a dedicated design service. But Bespoke also includes surveys, installation and full project coordination, while Core is supply-only.

Design

Core is designed on a parametric modular system that allows custom sizing. Bespoke offers complete design freedom, tailored layouts and details.

Materials

Core cabinets are made from a more economical birch plywood and finished in a curated range of laminates or wood veneers. Bespoke offers a broader palette, using hardwood veneers such as oak, walnut or maple, or fully custom finishes. Bespoke materials are veneered to order, so if you're looking for a particular grain or tone, we can work with you to achieve it.

Styles

Core is only available in our Overlay style. Bespoke offers Overlay, Edge, Linear and Frame styles.

Colours

Core comes in a curated palette. Bespoke gives you unlimited colour and material options.

Pricing

Core cabinetry typically costs around a third less than Bespoke, though this comparison reflects cabinetry only and does not account for the installation included in a Bespoke project.

Lead times

Core projects are often quicker. Bespoke timings depend on project complexity.

Importantly, both ranges use the same high-quality construction methods and ironmongery. Because we refuse to compromise on quality, you'll get the same longevity and design input whichever route you choose.



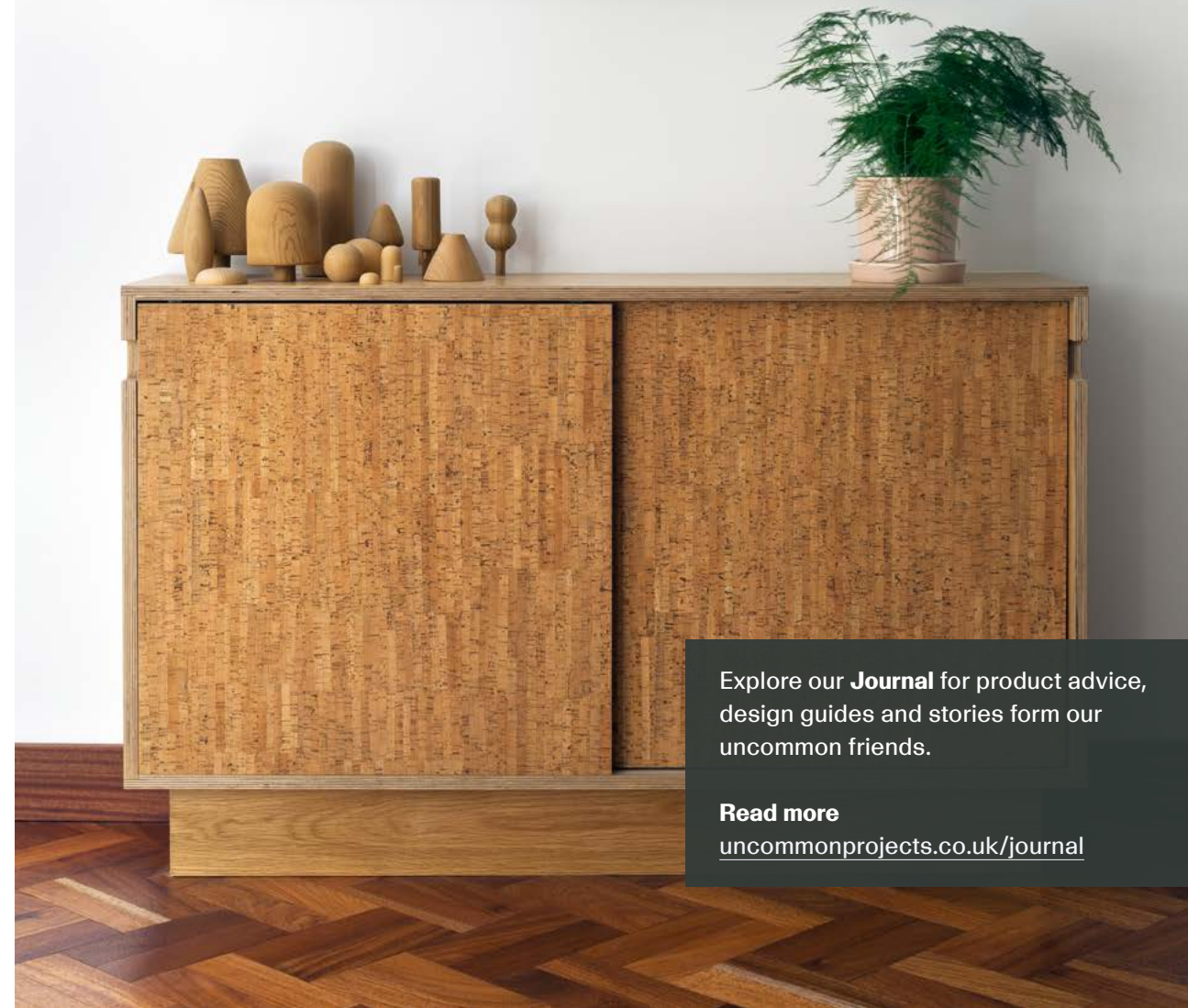
Who is each one for?

Bespoke is ideal for:

- Clients seeking a more hands-off process with site surveys and project coordination
- Homes with awkward spaces or complex service requirements
- Larger renovations or full-house joinery projects (only available via Bespoke)
- Anyone who wants our Edge, Linear or Frame styles or something truly one-of-a-kind

Core is ideal for:

- Homeowners confident in managing their own renovation or working with a trusted builder
- Architects, designers and developers working on professional projects who want high-quality cabinetry with expert design support
- Projects with straightforward layouts and reliable site teams



Explore our **Journal** for product advice, design guides and stories from our uncommon friends.

Read more
uncommonprojects.co.uk/journal



What's the experience like?

We apply the same level of design thinking and architectural rigour to both. With Core, we'll work closely with you or your architect to develop a layout that fits your space and needs, based on accurate survey information that you provide. Once the design is agreed, we manufacture your kitchen and deliver it to site. You'll be responsible for coordinating trades, installation and fitting. We're still here for questions, but the day-to-day running is up to you.

With Bespoke, we visit your site, manage the drawings and surveys, and coordinate timings with the build team. We're in regular contact throughout and install the kitchen ourselves, ensuring everything fits and functions exactly as it should.

For some clients, this hands-on support is essential. Others enjoy taking the lead themselves. It's worth asking early on: do you have the time and experience to manage your kitchen project? If not, Bespoke is usually the better route.

Can I switch between Bespoke and Core?

Once you've read through the options, you'll likely have a clear sense of which route feels right for your project. We'll quote based on your preference, and if things change as your plans evolve, we're happy to provide a revised quote.

Which one better suits my home?

Both Core and Bespoke kitchens can work in any style of home, from Georgian terraces to contemporary apartments. Your choice of colour, worktops, handles and layout will shape the look and feel.

Core kitchens are always made in our Overlay style – a flat panel door with a clean, minimal profile – and are available in birch ply with laminate, ash or oak veneer. We have a range of handles styles that work with this, or you're welcome to source your own. Thoughtful combinations of materials and details can make Core feel warm and characterful in period homes, or cool and contemporary in modern spaces.

Bespoke offers more freedom. Whether it's one of our four styles – Overlay, Edge, Linear or Frame – a specific timber, or a one-off kitchen layout that responds to unusual architecture, Bespoke gives you full control. Our Edge style in particular offers a precise, architectural detail that many of our clients love for its tactile, integrated feel. It's been our signature for well over a decade but by no means all that we do.

Still not sure?

We're always happy to help you decide. If you're weighing up the options, send us your plans or book an appointment at our showroom and we'll walk you through what's possible with each route.

The right choice isn't just about budget, it's about what kind of process works best for you. Whether Bespoke or Core, we'll design and deliver a kitchen that reflects the same commitment to thoughtful design, material honesty and long-term quality. We couldn't do it any other way.

We understand the needs of every customer are uncommon.

We take time to understand more than your project. We get to know you. Beyond layouts, materials and specifications, we talk about how you want to live, both now and in the future. That understanding shapes every decision, from colour to cabinetry to how your kitchen should flow. It's the same approach we bring to every project, whether you're commissioning a Bespoke kitchen or going with our Core system.

Case study 41 | Bespoke

A family kitchen with bespoke joinery that defines the space

After returning to the UK after a period living overseas, the owners of this East London home began an extension project with Bradley van der Straeten Architects and commissioned us to develop their kitchen design.

3/10





As keen entertainers, the kitchen was to be the heart of their home. They had an initial plan care of the architects, but asked us to finalise the layout and design shelving in the dining area with an integrated window seat and radiator covers.

The cooking area was designed to create a sense of openness and flow between the hallway and the dining space, eschewing the obstruction that a peninsula layout might create in favour of extra-deep worktops in white Corian on both sides. The units around the sink are ended with an open wine-rack facing the dining table, helping 'turn the corner' from one area into another. Housing the fridge, freezer and oven, a set of tall cabinets in oak-veneered birch plywood with spray-lacquered dark brown doors create a visual connection to the dining-room shelving.

CS41 | Details

Product: Bespoke

Colours and finishes: Spray lacquered Farrow and Ball Mahogany, oak and cork veneers

Style: Edge

Appliances: Siemens

Tap: Grohe Minta

Sink: Franke Kubus

Worktop: Corian White



Mostly open, with some sliding cork doors, the two sets of shelves sit atop radiators concealed behind plywood slats, extending to an L-shaped window seat on one side of the room. The warm, woody tones create an ambiance of comfort and cosiness throughout the space, while features such as the cork accents and slatted radiator covers lend a touch of mid-century modernism to the overall aesthetic.



We work in plywood because nothing else performs like it.

Plywood is our defining material. We chose it back in 2011 for its strength, stability and clarity. Since then, every Uncommon cabinet has been full-ply — made entirely from engineered birch plywood, never MDF or particle board — ensuring structural integrity that lasts for decades.

From exposed edges to carefully rebated joints, we take pleasure in every detail. Plywood isn't just our material of choice, it's become our design language.



Objects

Our collection of furniture and homewares. Designed by us or in collaboration with our uncommon friends.

Designed and made by hand at our London workshop, our furniture and homewares are finished with the same attention to detail as our Bespoke and Core kitchens, using the same high-quality materials and finishes we're known for.

4/10

Y-Stool

A characterful kitchen stool available in two heights for the breakfast bar or around the table. Named Y-Stool after its central steel structure that also serves as a footrest, it's made with hardwood-veneered plywood legs and a cork or laminate seat. Occasionally, we release it in limited-edition collaborations.

Objects is the name of our collection of furniture and homewares.

View the collection
uncommonprojects.co.uk/objects

Slide Sideboard

A modern sideboard with smooth-running sliding doors, precision-made from hardwood-veneered ply in oak, walnut or maple. Hard to find at this level of quality, it's available in 1.2, 1.8 and 2.4 metre lengths, with cork or laminate doors, with or without drawers, and the option to wall-hang or stand on solid wood legs.



Uncommon Projects x John Booth

This collection grew out of The Artist's Bedroom, an installation by John for House of Voltaire, exhibited at Matches Fashion in 2018. It marked the first time we had collaborated with an artist, and the first time John had seen his work realised as furniture. The collection — comprising stools, tables and a bed — is made from laser-printed plywood, apart from the bed, which is hand-painted by John himself.



Artist, fashion illustrator, ceramicist and textile designer, John Booth is best known for his drawings and ceramics that are multi layered collages bursting with colour and texture. Born in Scotland and raised in Cumbria, Booth moved to London in 2004, where he graduated with a BA in fashion print design at Central Saint Martins in 2009. He has since taught as a lecturer both at Central Saint Martins and the University of Westminster. Booth has worked for several fashion brands including John Galiano, Christopher Shannon and FENDI.



Uncommon Projects x Sophie Smallhorn
This collaboration marks artist and designer Sophie Smallhorn's debut in furniture. Combination Stool explores the meeting point of colour, form and function. It continues Sophie's long-standing fascination with composition and spatial relationships, expressed here as a finely balanced, functional object.

Sophie Smallhorn is a London-based artist and designer whose work explores the relationships between colour, form and spatial composition. Her practice spans sculpture, installation and commissions for public and private spaces, and she is known for her bold, architectural use of colour and refined sense of proportion.



We design for homes of every kind across the UK.

Our kitchens are made for all kinds of homes, from period terraces and rural retreats to compact apartments and modern new-builds. Each one is designed to suit its setting, whether that means taking centre stage or quietly complementing the architecture. Whatever the context, we adapt our approach to create something that fits your home, your style and the way you live.

Case study 46 | Bespoke

An open-plan kitchen that responds to the architecture

We designed this kitchen as part of a new extension to a period home, creating a large open-plan space that includes the main dining area. Working from the architect Selencky Parsons' initial drawings, we refined the layout, proportions and detailing to make the kitchen work seamlessly within the space.

5/10

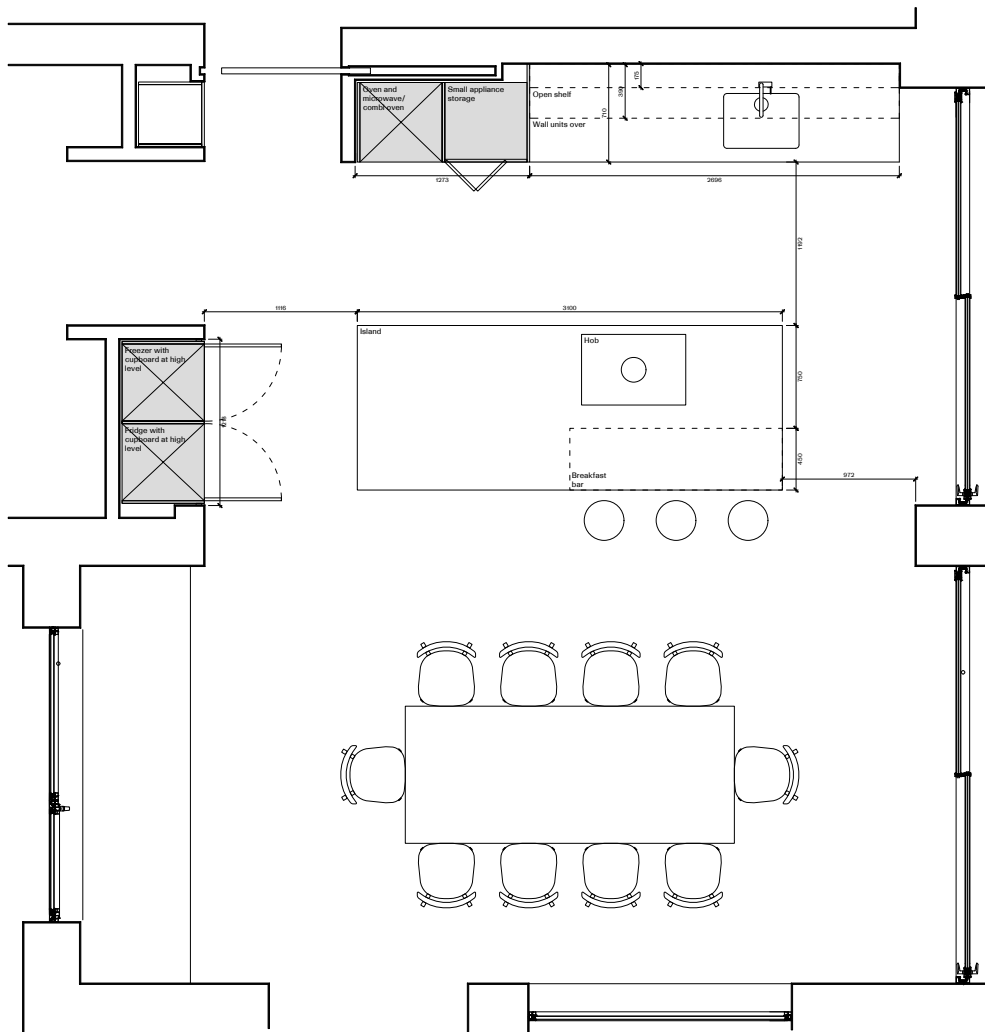






The **Sourcebook** is our take on what's worth specifying. A trusted shortlist to help you cut through the noise.

Take a look
uncommonprojects.co.uk/sourcebook



Take a look
uncommonprojects.co.uk/sourcebook



CS46 | Details

Product: Bespoke

Colours and finishes: Blu Fes, oak veneer

Style: Edge

Appliances: Neff with a Bora Pure hob

Tap: Quooker

Sink: Franke

Worktop: Corian White

We designed the island to look good from every angle. Cupboards, drawers and open shelving address each side, and a small breakfast bar provides space for two stools and casual meals. Tall units beside the sink hold the ovens and pantry, while a matching run opposite conceals the fridge and freezer, framing the entrance to the garden room.

The palette is simple and enduring. Classic navy cabinetry pairs with warm oak veneer and crisp white Corian worktops to create a calm, balanced space that feels completely at home with the architecture.

What we stand for: the story behind Uncommon Projects



Uncommon Projects began, quite simply, because we couldn't find what we were looking for. Back in 2011, we were designing and making furniture in our spare time: evenings and weekends spent building shelves, wardrobes, and a kitchen for our own homes and for friends. We came to it from different backgrounds — James from art and product design, and Alan from architecture — and between us we had both the design sensibility and the technical skills to program a CNC machine. What we didn't have was a kitchen we liked. So, we made one.

From the start, we were drawn to birch plywood. It had everything we wanted: strength, beauty, longevity and a quiet clarity. There was never really another material in the running. In the early days we used external CNC workshops, but when the chance came to buy a second-hand machine, we took it and never looked back.

We didn't begin with a formal statement of values. We just wanted to make sturdy, long-lasting, beautiful furniture. That principle has remained at the heart of what we do as we've grown.

A different kind of joinery practice

Our approach to design has never been rooted in tradition. While we admire and enjoy traditional joinery in our own homes, we didn't train as cabinetmakers. Our path has been about precision through digital manufacturing. That said, we were always aware of the skills we didn't have, and early on, we brought in team members with classical training. That combination has shaped the way we work ever since.

Alan's architectural background meant space was always the starting point. Layout comes first; furniture follows. That's still true today. All of our designers are trained architects. We think that makes a real difference in how we shape a kitchen or a home.

What makes good design

For us, good design doesn't draw attention to itself. It doesn't follow trends or shout to be noticed. It just works — beautifully, quietly and intelligently. A good kitchen layout fits the way you live. A good cabinet is a pleasure to use. A good space brings a sense of calm and joy to everyday life.

Every detail should earn its place. From the materials we choose to the way light moves through a room, the goal is to create something that supports the way people live. And it should last, not just physically, but aesthetically and emotionally, too. Good design has longevity.

Built to last

Durability is central to what we do. We design for the long term by keeping things simple. Many high street kitchens rely on drawers made from a complex assembly of plastic and metal components — each one a potential point of failure. Worse still, many of these systems are designed with planned obsolescence in mind, meaning they are only intended to last a limited number of years.

Our approach is different. Our drawer boxes are made from 13mm birch plywood, screwed together with no hidden mechanisms. Drawer dividers are just ply components slotted into place. Fewer materials, fewer parts, fewer things to go wrong. And the result is something that not only works better, but lasts longer.

How we want people to feel

Choosing a kitchen — or any bespoke cabinetry — is a major decision and a significant investment. We take that seriously. From the beginning of the process, we want our clients to feel truly heard and supported. We listen carefully, ask questions and offer honest, experienced advice that reflects both their needs and our design knowledge.

What we do isn't just about a beautiful finish. It's about the experience of living with something that works beautifully every day.



Well-designed, well-made cabinetry with a thoughtful layout can genuinely transform how you experience your home. People often tell us their Uncommon kitchen has changed how they cook, how they gather and how they think. That feedback means everything to us.

It's a bit like wearing beautifully made clothes, or using a perfectly designed phone or computer. You feel the quality in every interaction. That's what we try to do with our kitchens: to create something that enhances daily life through care, precision, and lasting value.

Of course, our showroom plays a role in that journey. It's our home: a warm, characterful space that helps clients imagine what their own space could feel like. But the most important part is what comes after: the quiet, ongoing satisfaction of living with something that just works, and keeps working, year after year.

Where we're going

We plan to keep growing, carefully. That means staying true to our foundations: exceptional design, meticulous craftsmanship and outstanding customer service. These are the qualities that have defined Uncommon from the beginning, and they will continue to shape everything we do.

We're committed to setting the standard in our industry, ensuring we remain a market leader in both style and substance. That means continuing to innovate, to refine and to push the boundaries of what a kitchen can be.

Our bespoke offering remains at the heart of our practice. We approach every project with care, tailoring each one to the unique needs and character of our clients and their architecture. That passion for thoughtful, client-led design drives everything we make.

Founders Alan Drumm and James Hoy





At the same time, we're excited to grow our presence further afield through the expansion of our supply-only Core range. It allows us to share Uncommon's aesthetic and quality with a wider audience, while maintaining the integrity and precision that define our brand.

Wherever we go next, we'll do it with the same care and integrity that has guided us since day one.

The people behind the work

We don't often talk about "studio culture", but we do think a lot about how we work. We're a close-knit team of designers, makers, project managers and installers. Everyone knows how the whole process works, and there's mutual respect across roles.

Unlike most kitchen companies, we do everything in-house. Integrating design, manufacture and installation. That gives us control over quality and consistency, and it provides a feedback loop that allows us to continually refine our process. The office and workshop are close, and people are constantly moving between them.

What guides us

We have a simple test for every decision: would we have it in our own homes? If the answer is no, we don't recommend it.

We're honest. If something won't work, we'll say so. That clarity builds trust. Our clients know we have their best interests at heart, and that our advice is grounded in experience.

Our growth has been deliberate. No external investors. No rush to scale. Just a steady, intentional path that allows us to protect what matters: our culture, our standards and the quality of our work. That's what we stand for. And that's what you can expect from us.

— founders Alan Drumm and James Hoy





We integrate design and manufacturing to ensure precision and longevity.



CNC machining gives us millimetre accuracy, while hand-finishing ensures every piece meets our high standards. Bespoke projects are built and installed by us from start to finish, with care and attention at every stage. Core projects are delivered ready to install, made with the same precision for a perfect fit on site. However it arrives, every kitchen reflects our commitment to the best tools, processes and craftsmanship to achieve lasting quality.

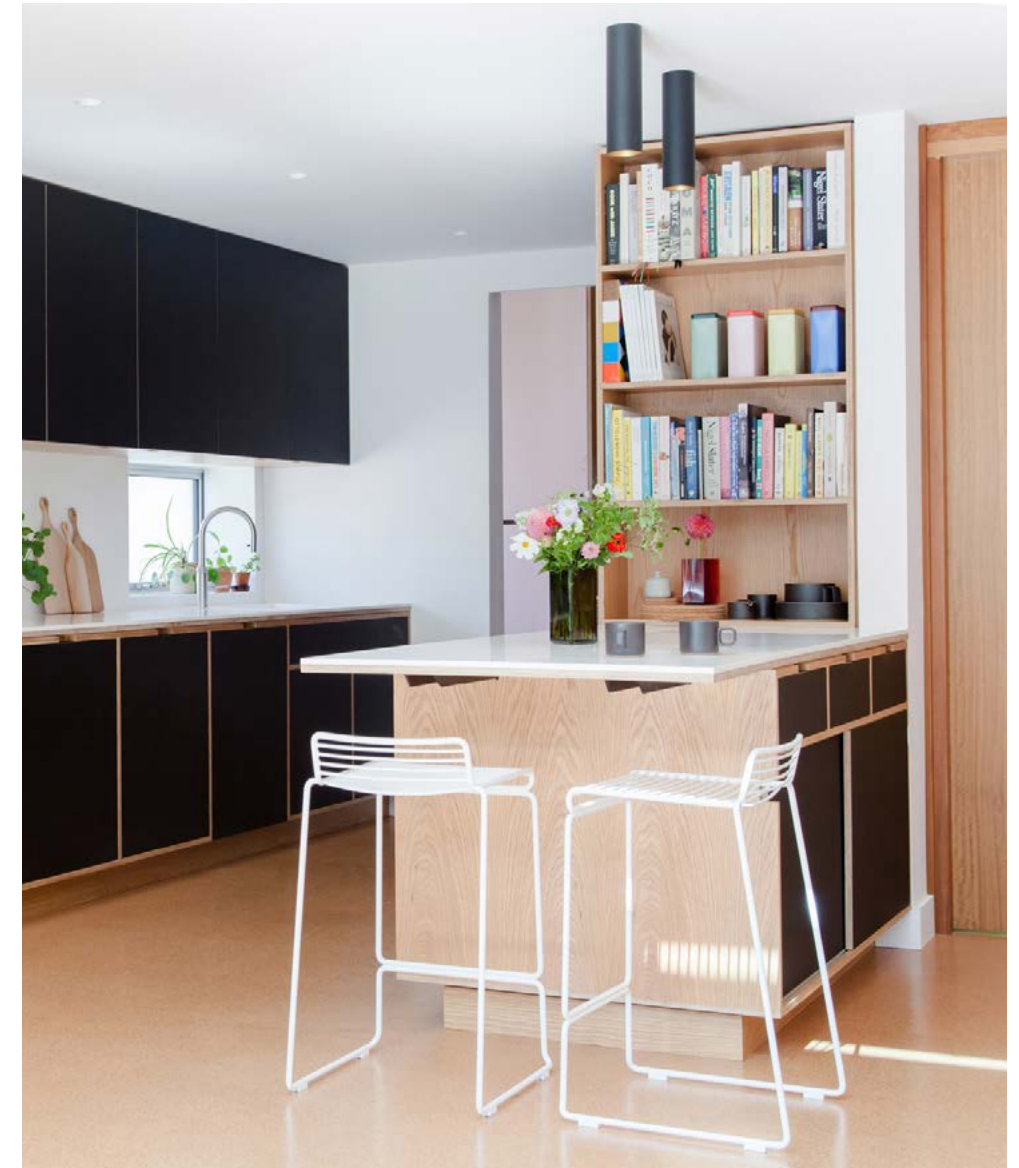
Opposite: Bedroom storage for all the family (Case study 15 | Bespoke)

6/10



Styles

They define the character of your kitchen. We offer a variety that balances form, detail and expression, giving you the freedom to create a look that fits your home, whether classic or contemporary.



Edge

Some would say our signature style, Edge expresses our plywood material and precision detailing. Hand openings are integrated directly into the frame, creating a flat, unobtrusive finish that keeps the focus on the material itself.



Overlay

Simple, versatile and timeless. Overlay is defined by clean lines and flat fronts, with the option of recessed or external handles. Its character shifts easily from contemporary to classic, depending on your choice of colour and detailing.



Styles

Linear

An inherently minimalist design where the handles are created by leaving space above drawers and doors, allowing the panel itself to be gripped for opening. Linear creates a graphic, horizontal effect and a refined architectural feel.



Frame

A bold and distinctive style where each door and drawer sits within its own surround. The pronounced framing gives the kitchen greater presence and structure, lending weight and definition to the overall composition.



We build with responsibly sourced plywood throughout.

We work exclusively with European birch plywood for its mechanical strength, stability and ability to hold fixings securely. These are the qualities that make our kitchens exceptionally durable. Plywood resists warping and water ingress, and its layered structure allows joints and connections to stay true over time. Unlike most kitchens that hide inferior materials beneath the finish, ours are made entirely from ply, not just faced with it. Every panel is planned to minimise waste and make the most of each sheet. Offcuts are reimaged in collaboration with artists and designers, or gifted to local colleges and universities, extending the life of the material in new and unexpected ways.

Case study 33 | Bespoke

Modern plywood joinery in conversation with a historic coach house

On a quiet road in south-east London stands a renovated Victorian coach house owned by two architects, Hannah and Neill Campbell. The property had previously been used as a sculptor's studio before being bought and sensitively converted by them.



7/10



From the outset, they made a conscious decision to leave as much history on show as possible. Relics of the horse stalls, carriage doors and beams had to integrate with and complement the modern interventions needed to make it into a family home.

The existing fabric of the building is made up of a rich jigsaw of original materials and textures. To differentiate between old and new, Hannah and Neill designed the new elements in the house, like the staircase, floor structure and wardrobes in a single material, birch plywood. We suggested using maple-veneered birch plywood for the cabinetry as it looks very similar to birch, but is much harder wearing and better suited to heavily used kitchen furniture.



Architecture and Interior by Hannah
Campbell Design Joinery design in
collaboration with Uncommon Projects

The optimal layout was clear from the outset. Two beautiful original timber posts that once denoted the horse stalls were retained and the island sits between, making clear what's old and what's new. The sink and tall units are arranged against the wall. Open shelving on the wall, island and end of the full height cabinetry stops the kitchen from feeling too formal. Hugely practical, they also allow for the pops of colour to come from The clients' own objects; a constantly changing and eclectic array of herbs and spices, books, pictures and ceramics.

White Corian and ply worktops bounce as much light as possible from the fully glazed roof deep into the heart of the space. An unpainted cement render splashback behind the sink completes the elegant and functional look. The result is a materially simple, unpretentious kitchen scheme that sits in complete harmony within this historic space.

CS33 | Details

Product: Bespoke

Finish: Maple veneer

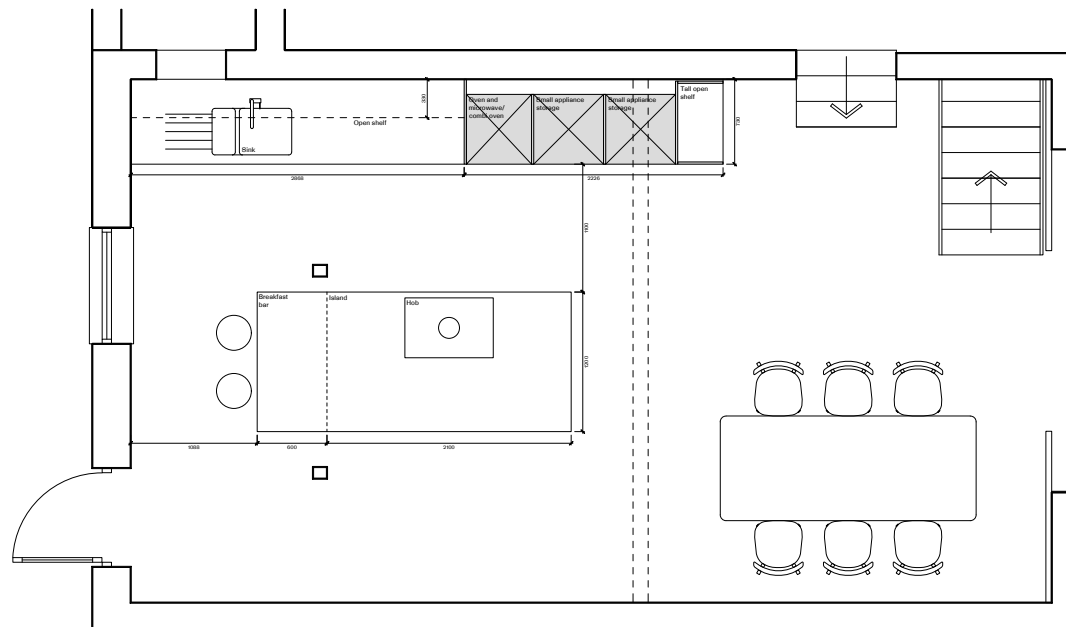
Style: Edge

Appliances: Siemens

Hob: Bora

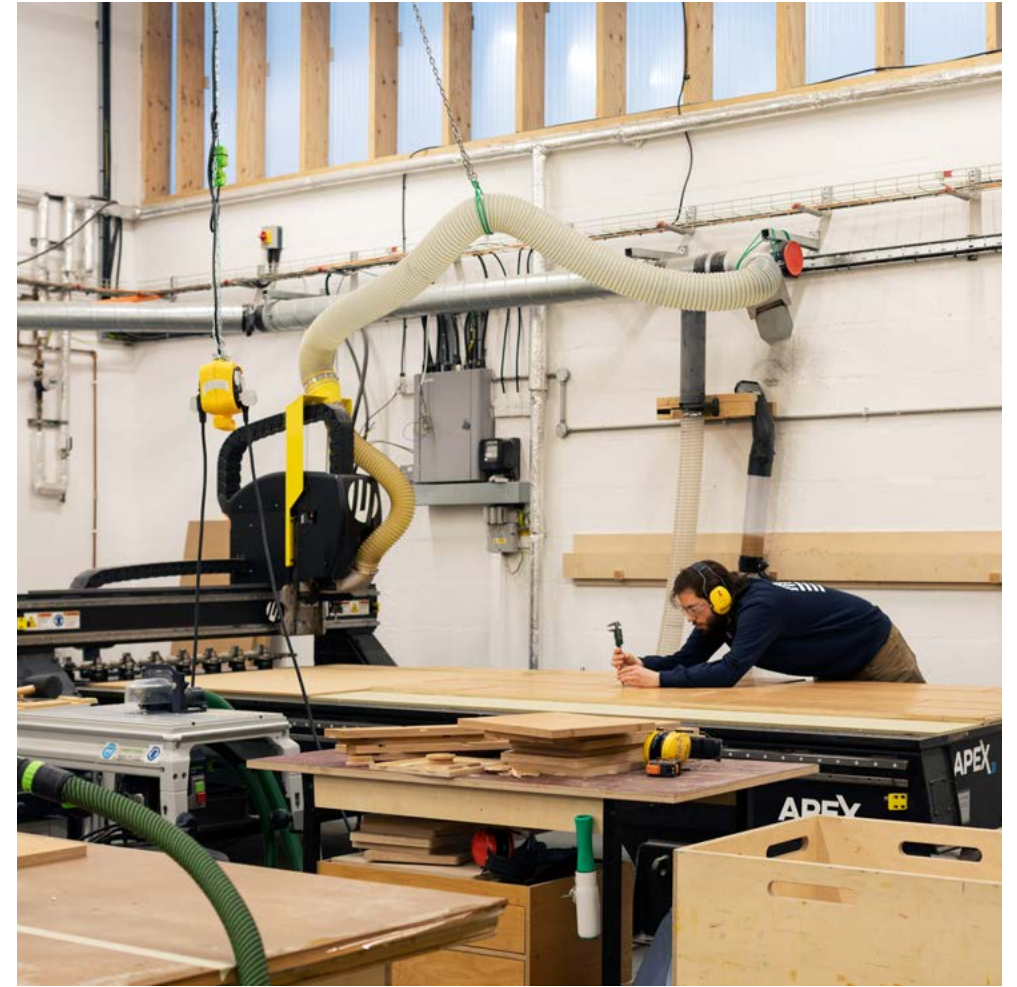
Tap: Grohe Minta

Worktop: Corian White



Everything we make is built to last.

Because we design and manufacture everything under one roof, we control every detail...from the engineered plywood chassis to the fixings and finishes. Nothing is left to chance. Gaps stay aligned. Drawers run true. Materials hold their shape. We set high standards for every component we use, and we invite you to inspect every part of what we make. These are things you shouldn't have to think about, and with us, you won't.



8/10



We're obsessed with the details.

9/10



Edges, reveals, joints, grain direction...nothing is overlooked. But detail doesn't stop at the surface. We think about how a kitchen flows, how it feels to use and how its layout supports daily life. From the position of a drawer to the weight of a door, everything is carefully considered. You might not notice it all at first, but over the lifetime of your kitchen, you'll come to appreciate every part of it.

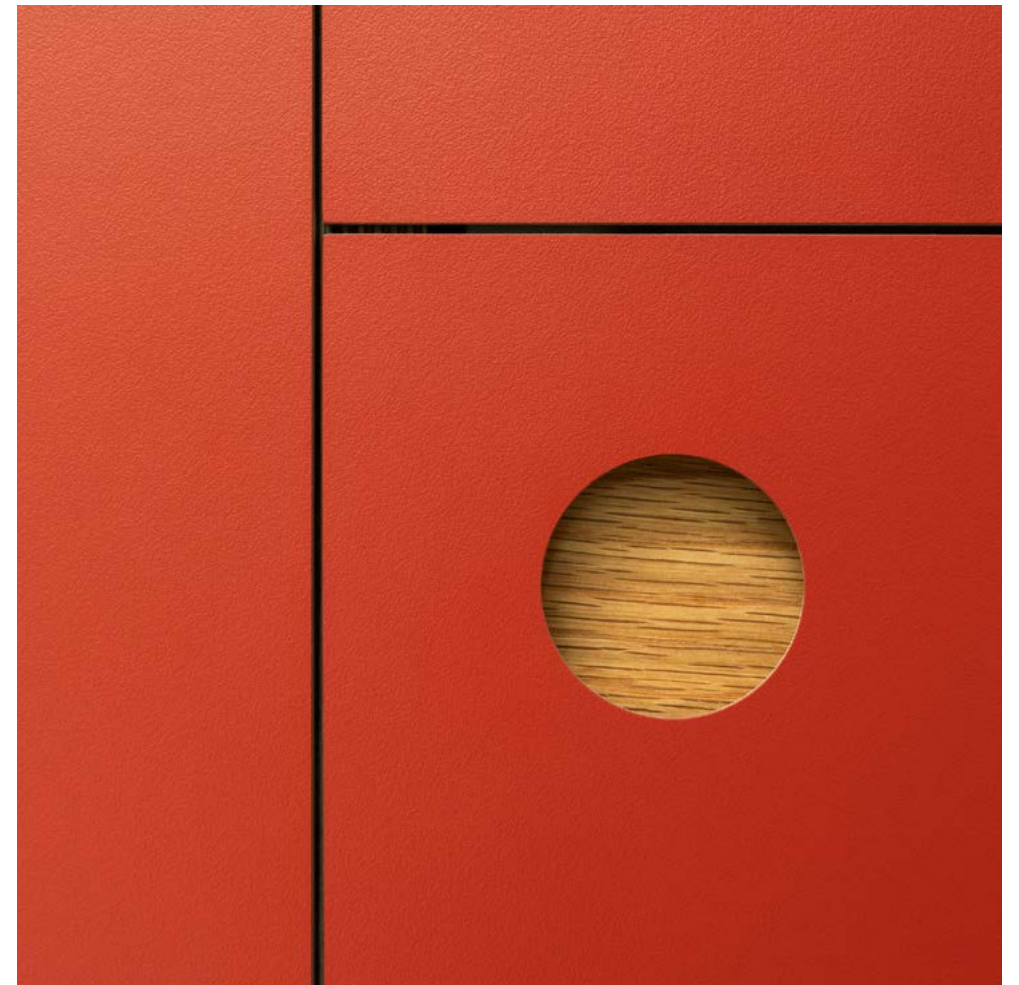
Built entirely from birch plywood, an Uncommon kitchen feels reassuringly solid and enduring. There are no hidden materials, just honest construction that stands the test of time.



Every detail is cut with precision using advanced machinery and finished by our workshop team. It's this combination of technology and expertise that gives our kitchens their unmistakable quality.



We've always loved working with materials and finding ways to show their character. We take every opportunity to express the honesty and beauty of the plywood beneath the surface.



Our kitchens are test-assembled in our workshop before delivery. It's how we check each joint, alignment and detail, ensuring the quality and longevity we're known for.



How a kitchen feels to use is as important as how it looks. Our drawers and doors move with reassuring weight and precision, reflecting the quality of materials and care in making.



Modesty, honesty and efficiency are at the heart of our business.

Designing like this is a rare pleasure, and we treat it that way. We listen carefully, collaborate closely and bring care to every detail. We also give direct, honest advice. Our kitchens are made to last a lifetime, so getting it right matters. With years of experience to draw on, we'll help you make decisions that stand the test of time. We keep the rest simple: clear pricing, realistic timelines and no surprises. If that sounds like your kind of project, we'd love to hear from you.

A lot of kitchen companies sell an image. The pictures look good, but what's behind them often isn't. Materials are substituted for cheaper alternatives, details are hidden and service can feel like an afterthought.

10/10

We've always done things differently. For us, modesty, honesty and efficiency aren't just words; they're the principles that guide how we work. They shape every decision, from the materials we choose to the way we communicate.

We design and make everything ourselves, which means we're responsible for every stage of the process. That's how we maintain quality, not just in the kitchens we build but in the relationships we build, too. We want to enjoy the work we do, the people we do it with and the results we create together. We can't imagine doing it any other way.





Visit our showroom

We designed our showroom to show our Bespoke kitchens, furniture and Core system in a range of styles, colours and finishes. It's a space to explore, to feel the quality of our products and to see the care that goes into every detail.

We encourage you to open every door and every drawer, feel the weight of the materials in your hand and look inside the cabinets to see how they're made.

The showroom is open by appointment, and we'd love to welcome you in person.



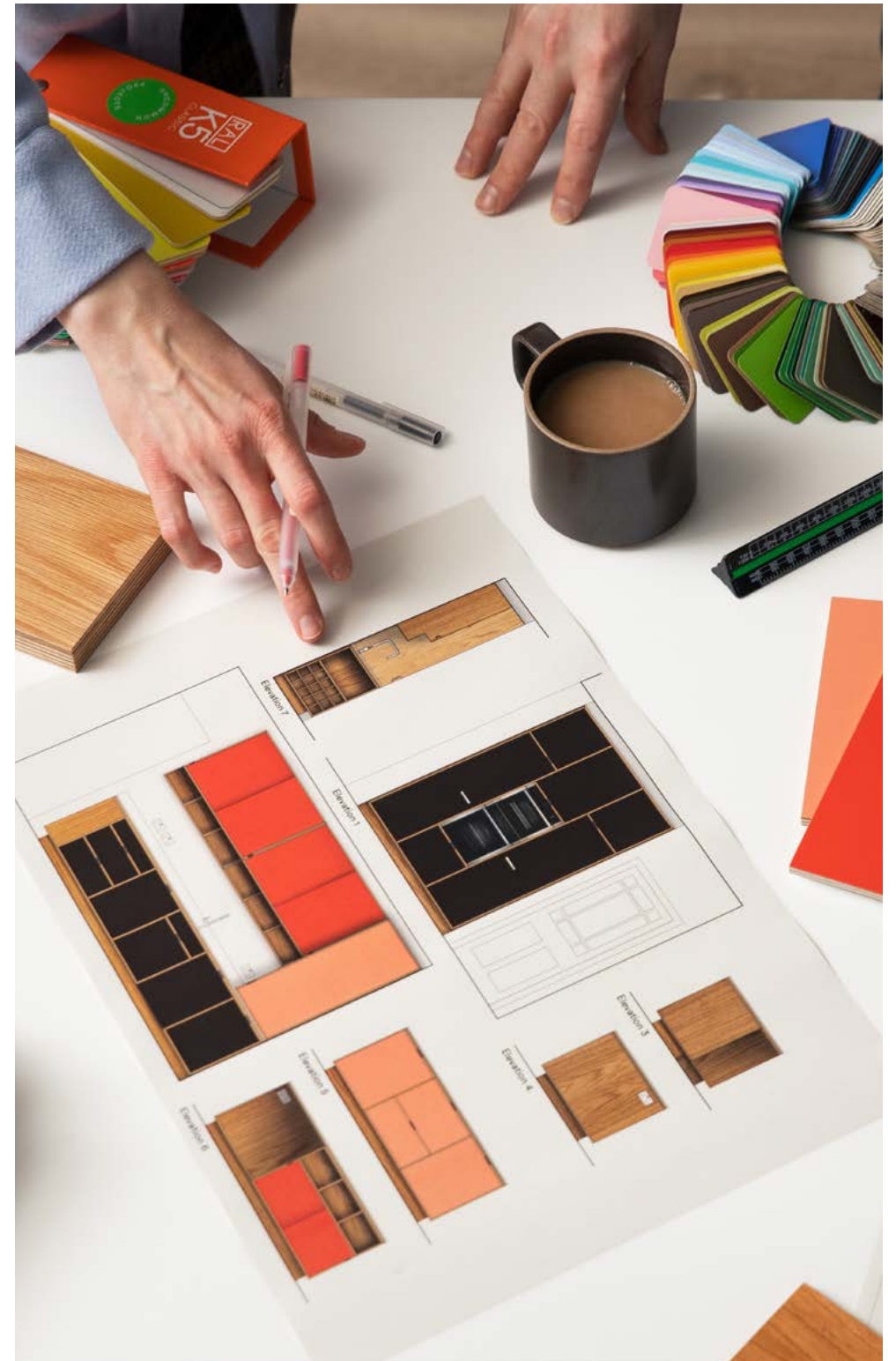
Visiting our showroom is the first step in visualising your project. Not just the kitchen, but the layout and how your home will feel. It's often the moment customers first glimpse the lifestyle they've been imagining.



Our showroom features all our styles — Edge, Overlay, Linear and Frame — helping you decide on the proportions and details that you want in your own space.



We encourage you to open every cabinet and drawer. See the quality of our joinery, the precision of our manufacturing and the variety of options available for your project.



During your visit, we'll guide you through the textures, tones and materials that interact across the whole kitchen so you leave with a clear sense of your design, layout and the choices ahead.



Get started

No matter how modest your vision or grand your design, it all starts with a conversation.

If you're ready to talk to us about your home, please make an enquiry online or get in touch using the details below.

Telephone

+44 (0) 208 617 1554

Email

enquiries@uncommonprojects.co.uk

Showroom (by appointment)

Unit 2 Ground Floor

Building B2

Design District

12 Soames Walk

London SE10 OAX

uncommonprojects.co.uk



First published 2025
© 2025 Uncommon Projects

All rights reserved. No part of this publication
may be reproduced without the written
permission of Uncommon Projects.

Photography

Jocelyn Low
Megan Taylor
Ruth Ward

Direction

REH Consulting

Design

Studio Chehade

