



Battery Pack

SBE-STD-CB-1



INSTALLATION & OPERATION MANUAL

Safety, Compliance and Warranty Information

Rev.1

Move S.p.A.

VAT / P.IVA: 09887990969

REGISTERED OFFICE

Piazza Cavour, 7, 20121 Milan - Italy

MOVE SOLUTIONS CUSTOMER ASSISTANCE SERVICE

Visit the website at www.movesolutions.it for contact information relating to office addresses and phone numbers.



Battery Pack

INSTALLATION & OPERATION MANUAL

This document applies to:

SBE-STD-CB-1

© 2026 Move S.p.A. All rights reserved.

Manual drafted in Italy

14 April, 2026

Revision 1

NOTICE OF PUBLICATION

The information contained in this manual may be subject to change without notification. For further instructions, more detailed information, product specifications and to download up-to-date manuals, visit our website at www.movesolutions.it

Index

1. Regulatory and safety information	5
WEEE Compliance	6
FCC Compliance	7
ICES-ISED Compliance	8
Symbols and provisions used in the documentation	9
2. General description	10
3. Technical data	11
3.1 Battery life	11
4. What's in the box	12
5. Installation	14
6. Device operation	17
7. Maintenance	18
8. Overall dimensions	19

Regulatory and safety information

For the correct and safe operation of the product, it is recommended to read and follow the instructions in this manual.

The Battery Pack is designed and intended exclusively to provide auxiliary power to compatible Move Solutions sensors used for the monitoring of dynamic parameters, including vibrations, accelerations, and structural movements, within civil, industrial, and environmental engineering applications. The Battery Pack is intended to be installed, in combination with compatible Move Solutions sensors, on structures such as buildings, infrastructure, geotechnical works, or machinery, in order to support long-term data acquisition for structural health assessment, predictive maintenance, and evaluation of operating conditions.

The product is supplied exclusively on a business-to-business (B2B) basis and is not intended for sale or use by private consumers. Installation, configuration, operation, and maintenance of the Battery Pack must be carried out solely by qualified and trained personnel with appropriate technical expertise.

The product must be used in accordance with Move Solutions' technical specifications, within the declared environmental and operational conditions, and in combination with compatible Move Solutions sensors. Any use other than that described above shall be considered non-compliant with the intended use of the device.

Great attention should be paid to the following warnings. Move Solutions shall not be held responsible for inconveniences, damage or malfunctions due to lack of compliance to the prescriptions and suggested use in this manual.

- The declared IP rating applies only when the lid is correctly screwed in place and the cable is connected to a compatible Move Solutions sensor.
- Before use, make sure that the product conforms to the description in this manual and that no damage is present.
- Do not use batteries other than those specified by Move Solutions without express approval from a Move Solutions representative.
- Before any operation on the product, unless expressly authorized operations, disconnect the batteries.
- The product is not intended for use in applications where safety is extremely critical, such as medical-related applications or life-security systems.
- On top of the prescriptions in this manual, the user should operate in compliance with

local standards for security and health, and according to the best engineering practices for a safe installation.

- The product must be kept clear of children, animals, and any unauthorized personnel.
- Do not disassemble the product except when explicitly instructed in this manual, as this could cause malfunctions and damage the product.
- Do not attempt to repair or modify the product.
- If the product releases smoke or heat during operation, immediately disconnect the batteries.
- Do not expose the product to high temperatures outside the specified range or heat sources.
- Do not expose the product to liquids of any kind and do not operate on it with wet hands. The product can only be exposed to water when the conditions to guarantee the IP rating are satisfied.
- Do not operate on the product in extreme weather conditions that may damage the device or the user, such as thunderstorms or snowstorms.
- Do not disperse the product or part of it in the environment.

NOTE

In case of deterioration or loss of this manual, a compliant copy may be requested by the customer from the manufacturer. For increased security, we suggest that you keep a copy of this manual in a place where it cannot be damaged or lost.

WEEE Compliance

This product contains electronic components and batteries that must be disposed of separately from common household waste, according to local regulations. To ensure correct disposal of the product at the end of its lifecycle, please contact your local authority. Failure to comply with these regulations could lead to penalties.



This product is registered in the Italian WEEE Register under number IT25110000017837, in accordance with Directive 2012/19/EU on Waste Electrical and Electronic Equipment (WEEE).





This device complies with part 15 of the FCC Rules. Operation is subject to the following two conditions: (1) This device may not cause harmful interference, and (2) this device must accept any interference received, including interference that may cause undesired operation.

FCC Caution: Changes or modifications not expressly approved by the party responsible for compliance could void the user's authority to operate the equipment.

NOTE

This equipment has been tested and found to comply with the limits for a Class B digital device, pursuant to part 15 of the FCC Rules. These limits are designed to provide reasonable protection against harmful interference in a residential installation. This equipment generates, uses and can radiate radio frequency energy and, if not installed and used in accordance with the instructions, may cause harmful interference to radio communications. However, there is no guarantee that interference will not occur in a particular installation. If this equipment does cause harmful interference to radio or television reception, which can be determined by turning the equipment off and on, the user is encouraged to try to correct the interference by one or more of the following measures:

- Reorient or relocate the receiving antenna.
- Increase the separation between the equipment and receiver.
- Connect the equipment into an outlet on a circuit different from that to which the receiver is connected.
- Consult the dealer or an experienced radio/TV technician for help.

ICES-ISED Compliance

This Class B digital apparatus complies with Canadian ICES-003.

Cet appareil numérique de la classe B est conforme à la norme NMB-003 du Canada.

CAN ICES-003(B)/NMB-003(B)

Symbols and provisions used in the documentation

The following symbols and conventions are used throughout Move Solutions products documentation. Please follow all warnings and instructions marked on the product.



WARNING

WARNING indicates a potentially hazardous situation which, if not avoided, can result in minor or moderate injury.



Fire Danger icons warn of the possibility of fire.



Electrical Danger icons warn of the risk of electric shock.



IMPORTANT

IMPORTANT indicates a potentially hazardous situation which, if not avoided, can result in property damage or loss of product functionality.



Prohibition icons indicate actions that must not be performed.

NOTE

NOTE specifies the operating environment, installation conditions, or special conditions of use.

Bold

Highlights an important point or keywords for understanding the context.

Underlined

Denotes a reference to another part of the documentation or to an element within MyMove platform.

General description

2

The Battery Pack is an accessory for compatible Move Solutions sensors. It can be used to extend the operating autonomy or as an alternative power source to the internal battery.



These are the key features of the product:

- For indoor and outdoor operation.
- Extends battery life of Move Solutions sensors.
- Quick, flexible, and easy installation.
- Plug-and-play connection to Move Solutions sensors through provided cable.
- Based on high-density, non-rechargeable, user-replaceable lithium batteries.

Technical data

General data	
Connections	Embedded, non-removable cable with Move Solutions 8-pole connector Move Link . Requires Move Solutions sensors provided with 8-pole Move Link connector.
IP rating ¹	IP67
Internal batteries	4x 19Ah 3.6V replaceable lithium battery (D-type LiSOCl ₂ with JST EHR-2 connector, suggested EVE ER34615 EHR2)
Operating temperature range	From -40 °C to +85 °C
Dimensions	194.5 x 136.5 x 63 mm
Weight ²	0.9 kg
Package weight	1 kg
Case material	Polycarbonate
Included cable	Non-removable, 40 cm length
Installation options	Wall, floor, or ceiling mount using screw anchors (Ø6mm max). One set included in the package.

¹ The declared IP rating applies only when the lid is correctly screwed in place and the cable is connected to a compatible Move Solutions sensor.

² Refers to the Battery Pack unit itself. External accessories, such as mounting hardware, are not considered since they are optional and/or can be replaced with alternative parts to fit specific applications.

3.1 Battery life

The extended battery life is achieved by combining the sensor's internal batteries with the Battery Pack.

Expected values for the combined operating time are provided in the sensor datasheet and depend on the sensor's product code, its configuration, and operating conditions.

What's in the box

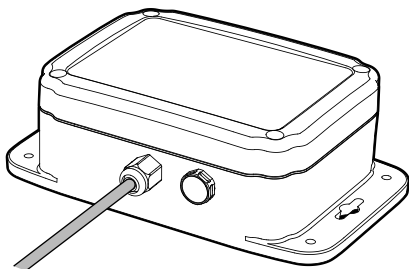
The Battery Pack is shipped in a cardboard box. A label affixed to the top of the box indicates the product **Part number** and **Serial number**.

The package contains the following items:

- Battery Pack with a non-removable cable with a Move Solutions 8-pole **Move Link** connector for Move Solutions sensors.
- Move Solutions flyer with a QR code linking to the most up-to-date documentation.

Mounting anchors are also supplied.

Carefully inspect the contents of the shipment upon receipt and verify that all components are present and in good condition.

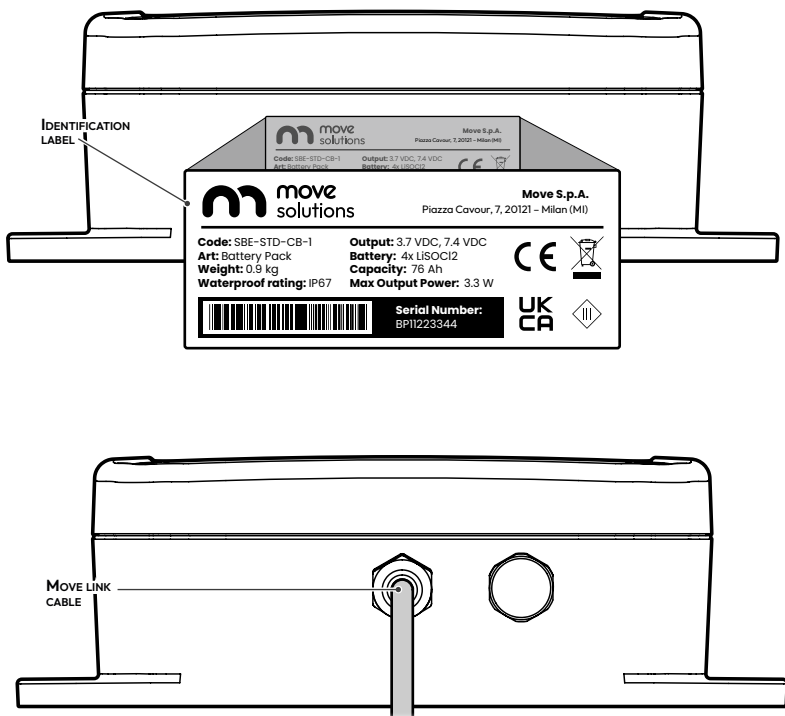


WARNING

DO NOT use the Battery Pack if any of the components looks broken or tampered with.



A label bearing the same information as the one on the packaging is affixed on the side of the Battery Pack. From the outside you'll see:



IMPORTANT

- **DO NOT** unbox the Battery Pack in a dusty and/or humid environment. The IP rating of the product is guaranteed only after the cable is correctly connected to a Move Solutions sensor.
- **DO NOT** loosen or tighten the screws of the Battery Pack as this could alter the product's IP rating.

Installation

5



IMPORTANT

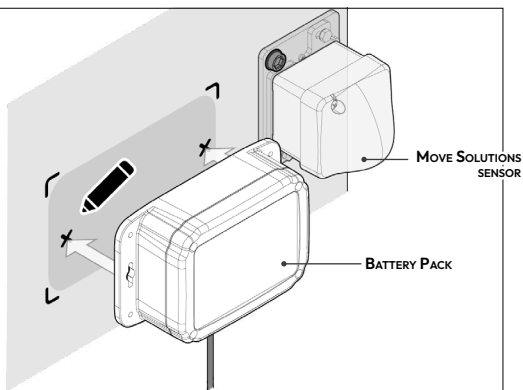
- Installation must be performed by qualified personnel. The mounting hardware provided and the instructions in this manual are for guidance only. The choice of installation materials and the proper execution of the installation are the sole responsibility of the installer. Move Solutions is not responsible for any damages of any kind, including personal injury, resulting from the installation of the device.
- Make sure the surface where the Battery Pack is going to be installed does not have asperities and protrusions.

Check that you have the right tools for the operation.

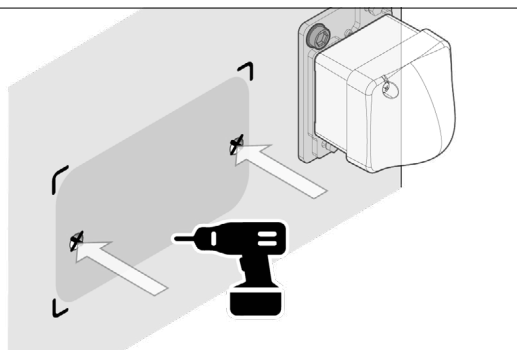
- A drill of suitable size
- An electric screwdriver of suitable size



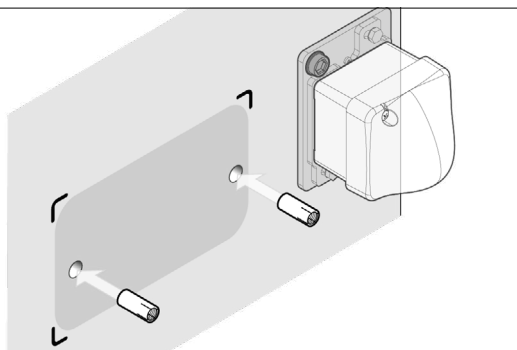
1. Using the holes in the enclosure as reference, mark the chosen spot.



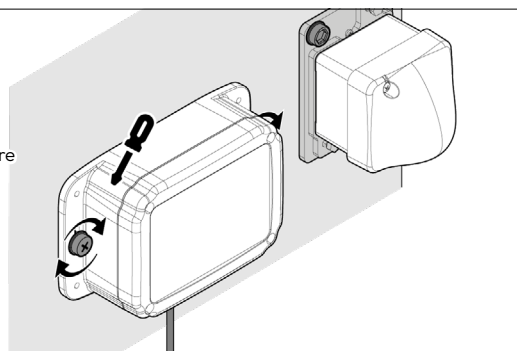
- 2.** Drill two holes for the anchors in the mounting surface.

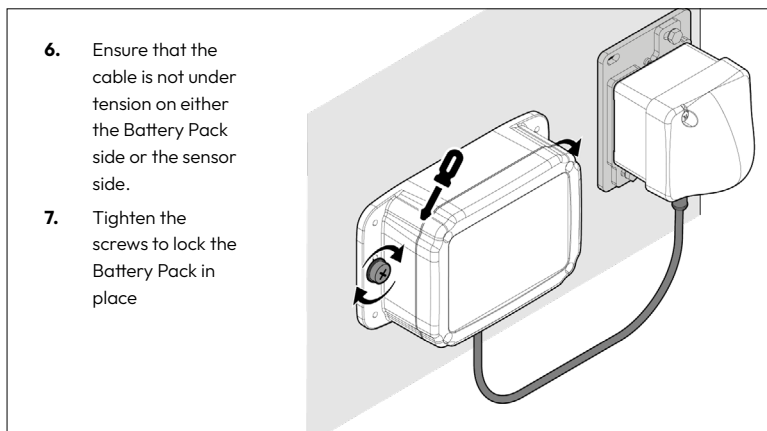
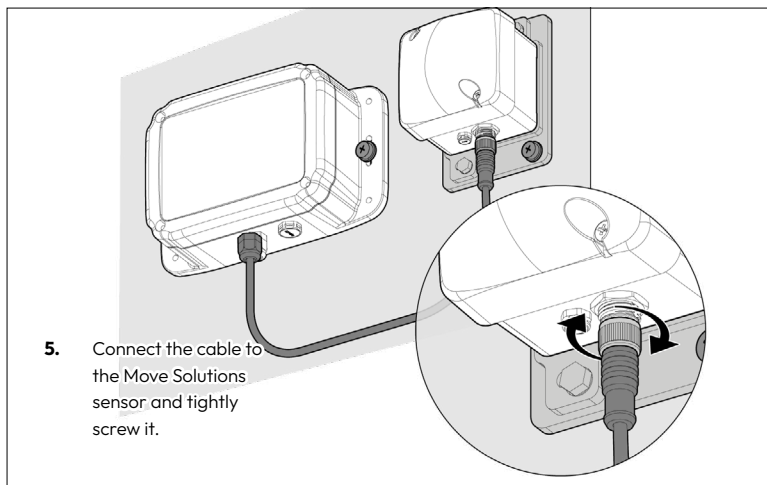


- 3.** Insert the two anchors in the holes.



- 4.** Place the Battery Pack on the structure and loosely tighten the two screws.





Device operation



The Battery Pack is supplied pre-activated and ready for use with sensors equipped with **Move Link** connector. Prior to installation, refer to the sensor datasheet and/or user manual to verify compatibility with the Battery Pack.

User access to the internal components is not required during installation. The enclosure should only be opened for battery replacement.

When connected to a compatible Move Solutions sensor, the Battery Pack begins supplying power automatically. No configuration is required.

The connection status is indicated by audible notifications as follows:

- Connection established: **one long beep.**
- Connection lost: **five short beeps in sequence.**

NOTE

If the Battery Pack is disconnected from the sensor, wait at least 15 seconds before reconnecting. Otherwise, the device will operate correctly but the connection confirmation sound will not be generated.



IMPORTANT

Opening the Battery Pack and breaking the seal voids the warranty. Only change the batteries independently when the warranty has already expired. For issues on devices still covered by warranty, always consult Move Solutions before deciding to open the product.

Expected batteries replacement intervals depend on the connected compatible Move Solutions sensor, the Battery Pack working conditions and its environmental conditions. Use only the specified batteries when replacing them.

For information on how to provision said batteries, please contact a Move Solutions representative. If the prescribed batteries are unavailable, or provisioning is not possible, consult a Move Solutions representative to find a viable alternative.



IMPORTANT

Move Solutions is not responsible for malfunctions and damage caused by batteries supplied by other companies and/or utilization of batteries different from the specified part number.

To change the batteries:

1. Arrange the necessary tools to work safely where the Battery Pack is installed.
2. Make sure to work with dry hands and in a dry environment. It's advised not to change the batteries in humid, rainy, foggy, or snowy weather.
3. Open the lid. This voids the product's warranty (if still valid).
4. Disconnect the batteries from the connectors on the main board and remove them from their respective slots.
5. Insert the new batteries in their slots.
6. Connect the new batteries to the connectors on the main board.
7. Properly close the lid tightening the screws.

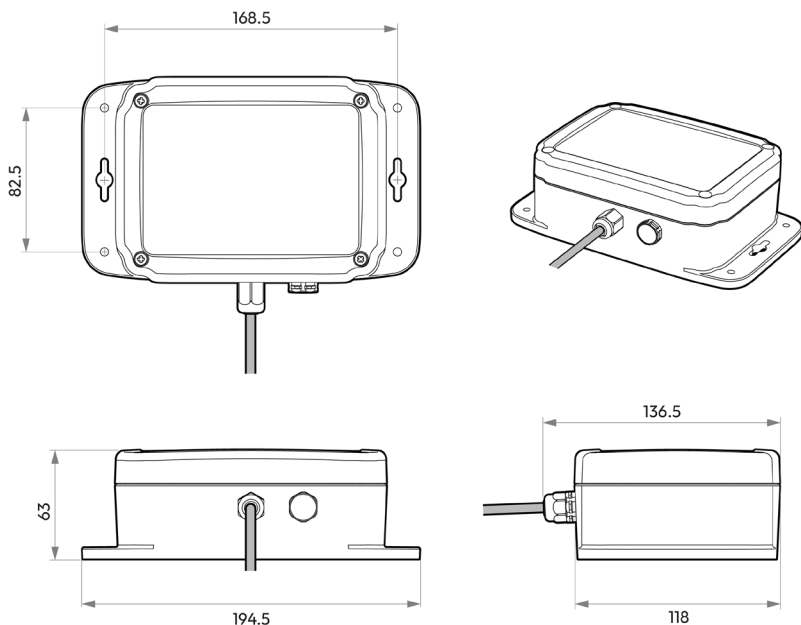
Overall dimensions

8

Please note that the drawings provided in this manual are not drawn to scale.

The purpose of these illustrations is to assist you in understanding the various components and their relative positions. Therefore, it is essential to rely on the numerical measurements provided alongside the drawings for accurate dimensions.

The following measurements are expressed in millimeters (**mm**).



Document revisions

N°	DATE	NOTES
Rev. 1	14 April 2026	Initial release

MOVE SOLUTIONS CUSTOMER ASSISTANCE SERVICE

Visit the website at www.movesolutions.it for contact information relating to office addresses and telephone numbers.

LICENSE AND COPYRIGHT

© 2026 Move S.p.A. All rights reserved.

PUBLICATION

Manual drafted in Italy

14 April, 2026

Revision 1

