

Quick Start Guide for MST-900 PRO

Place trailer so the solar panels can be pointed South for Best Solar input.

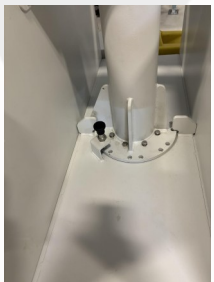
2. **Extend outriggers** and level to stabilize the trailer when raising the mast.



3. **To open panels:** Release pins on either side of the panel and pull panel out, secure pins in open position.



4. **To rotate panels:** Release pin at center post, Tilt panels to desired angle, engage pin to keep angle. Release pin at button of post, carefully swivel panels to face south, engage pin secure panels.



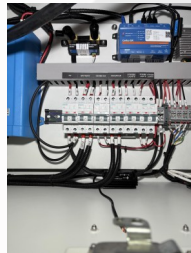
5. **Secure solar panels:** Attach wire cables at all four corners. Adjust cable length using an 8mm socket.



6. **Turn "ON" the batteries** with pushbutton. Green when on. (Both must be turned on).



7. **Turn ON Breakers for accessories needed**
Up=ON Down=OFF



8. **Make sure the timer is in manual mode** for strobe lights and LED lights. You can program it to turn and off the strobe lights as desired



9. **Raise the mast:** Turn hand crank, Clockwise/counterclockwise to raise/lower.



10. **When the mast is fully raised insert pin to secure.**



11. **Connect AC power if available.**



Please charge fully before deploying to avoid unnecessary outages.

Victron VRM application should be checked for connectivity and status

<https://www.youtube.com/@ms3security>

www.vms3.com