



ALL TRUCK PARTS LIMITED

ATP DRIVESHAFT



Company : ALL TRUCK PARTS LIMITED
Address : BLD#16, Huazhi Science and Technology
Innovation Center, No 28 Sanle E. Rd, Beijiao, Shunde,
Guangdong
Tel : 86-0757-22333572/0757-22333573
E-Mail : sales@alltruckpart.com
Postcode : 528311
Website : www.alltruckpart.com

ATP DRIVESHAFT

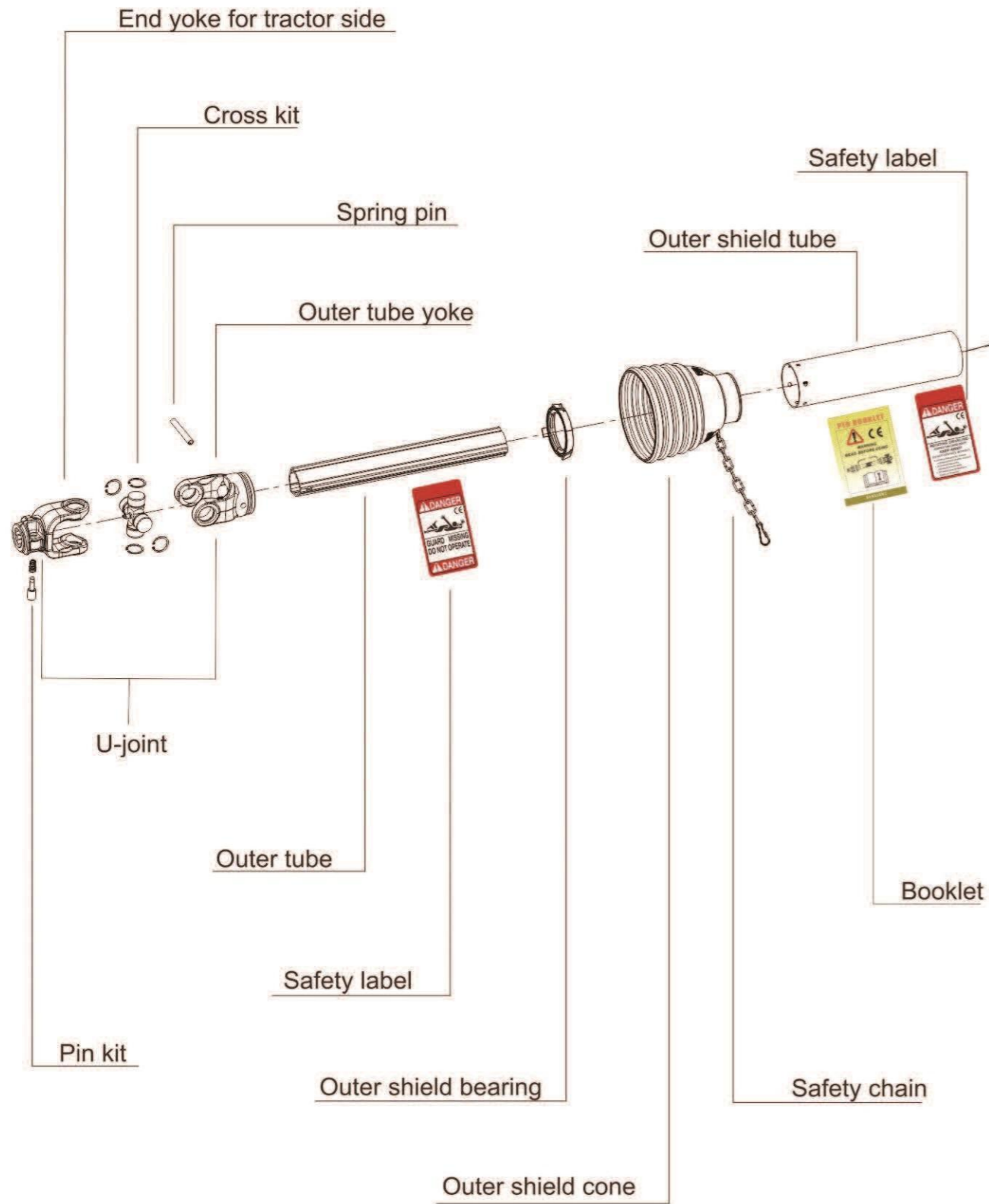
About Us

All Truck Parts Limited has a combined experience of over 20 years in the trucks and trailer industry. ATP has been expanding since our doors opened. We have set up offices in different countries to provide customer support to our local clients in America, Europe, Africa, Australia, and China. We are continuously improving and expanding our offices and factories. As a manufacturer of heavy vehicles on the road, we believe we play a part in road safety. Having said that, we hold high manufacturing quality and standard in all our factories. Supervision and regular inspection are conducted to ensure our license and certificate of ISO/TS16949 is maintain.

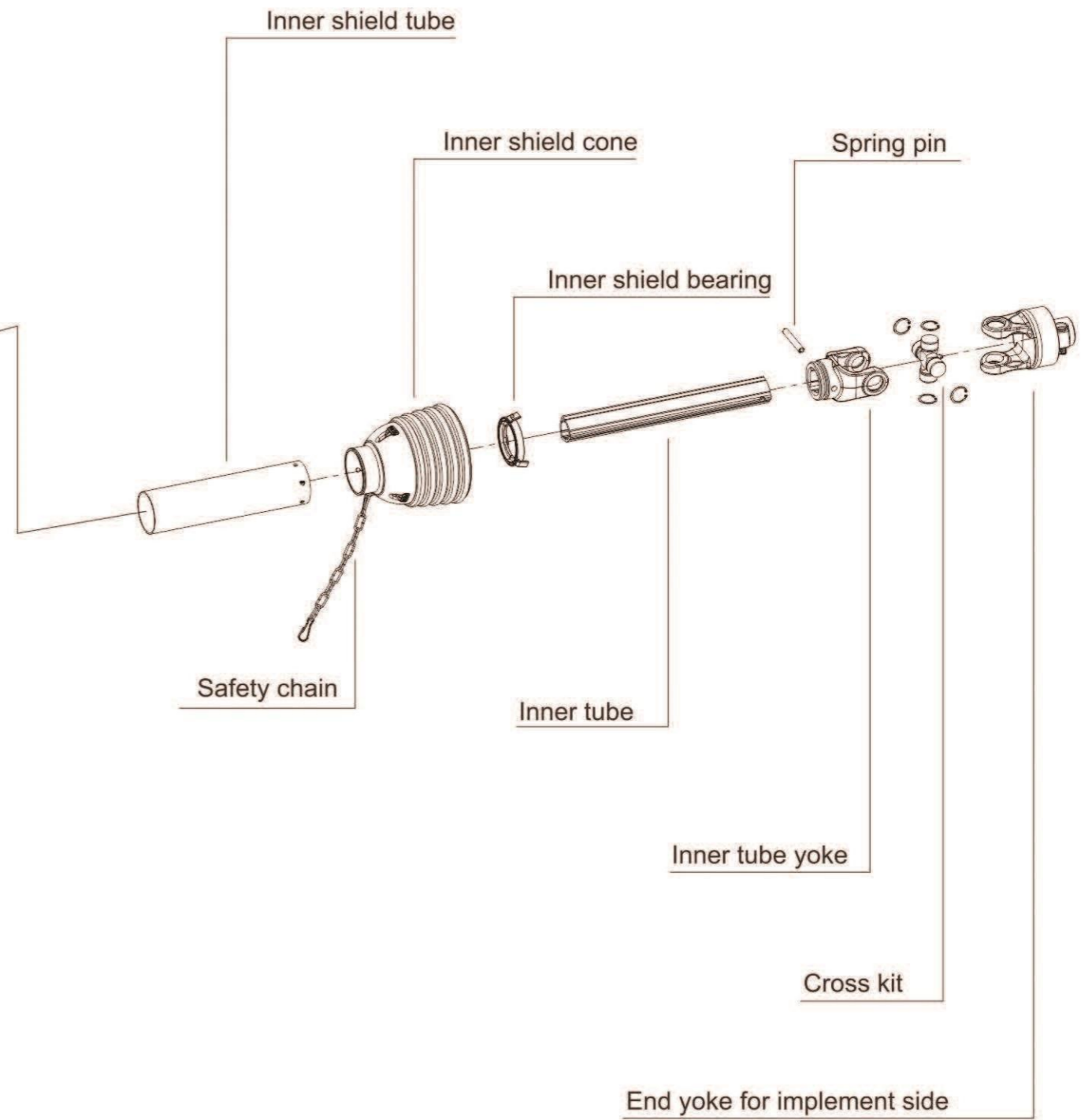
We are able to provide a one-stop solution for truck parts for our customers who can seek a variety of truck parts in our company. We have many talented individuals in our team including advanced engineers who are experts in the truck parts field in China. We have a very strong technical support background and quality control for all our products. Customized design and OEM/ODM are the most popular service provided by our factories. We have been providing OEM /ODM services to many large brands for a decade.

Factory direct prices for our customers is our advantage. Warranty guarantee plus quick delivery and on-time service are our priorities. Welcome customers from all over the world to create a long-term good relationship for business with us!

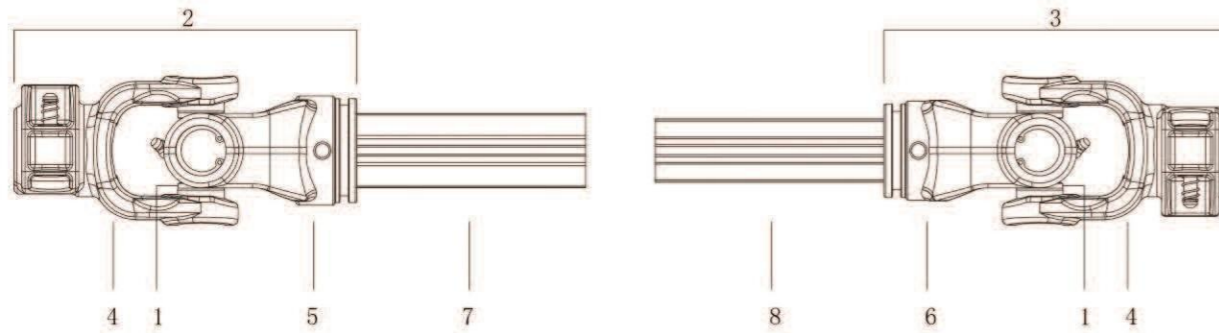
THE STRUCTURE OF PTO SHAFT



THE STRUCTURE OF PTO SHAFT



PTO DRIVESHAFT T SERIES



Series	Cross	Joint simple		Splined yoke	Tube yoke		Tube	
		Outer	Inner		Outer	Inner	Outer	Inner
	1	2	3	4	5	6	7	8
T1	1.01 (22*54)	1.0505B+1.01 +1.06	1.0505B+1.01 +1.07	1.0505B	1.06	1.07	1.03	1.04
T2	2.01 (23.8*61.3)	2.0505B+2.01 +2.06	2.0505B+2.01 +2.07	2.0505B	2.06	2.07	2.03	2.04
T3	3.01 (27*70)	3.0505B+3.01 +3.06	3.0505B+3.01 +2.07	3.0505B	3.06	3.07	3.03	3.04
T4	4.01 (27*74.6)	4.0505B+4.01 +4.06	4.0505B+4.01 +4.07	4.0505B	4.06	4.07	4.03	4.04
T5	5.01 (30.2*80)	5.0505B+5.01 +5.06	5.0505B+5.01 +5.07	5.0505B	5.06	5.07	5.03	5.04
T6	6.01 (30.2*92)	6.0505B+6.01 +6.06	6.0505B+6.01 +6.07	6.0505B	6.06	6.07	6.03	6.04
T7	7.01 (30.2*106.5)	7.0505B+7.01 +7.06	7.0505B+7.01 +7.07	7.0505B	7.06	7.07	7.03	7.04
T7N	7N.01 (35*94)	7N.0505B+7N.01 +7N.06	7N.0505B+7N.01 +7N.07	7N.0505B	7N.06	7N.07	7N.03	7N.04
T8	8.01 (35*106.5)	8.0505B+8.01 +8.06	8.0505B+8.01 +8.07	8.0505B	8.06	8.07	8.03	8.04
T38	38.01 (38*105.6)	38.0505B+38.01 +38.06	38.0505B+38.01 +38.07	38.0505B	38.06	38.07	38.03	38.04
T9	9.01 (41*108)	9.0505B+9.01 +9.06	9.0505B+9.01 +9.07	9.0505B	9.06	9.07	9.03	9.04
T10	10.01 (41*118)	10.0505B+10.01 +10.06	10.0505B+10.01 +10.07	10.0505B	10.06	10.07	10.03	10.04

PTO DRIVESHAFT T SERIES

PRODUCT INTRODUCTION

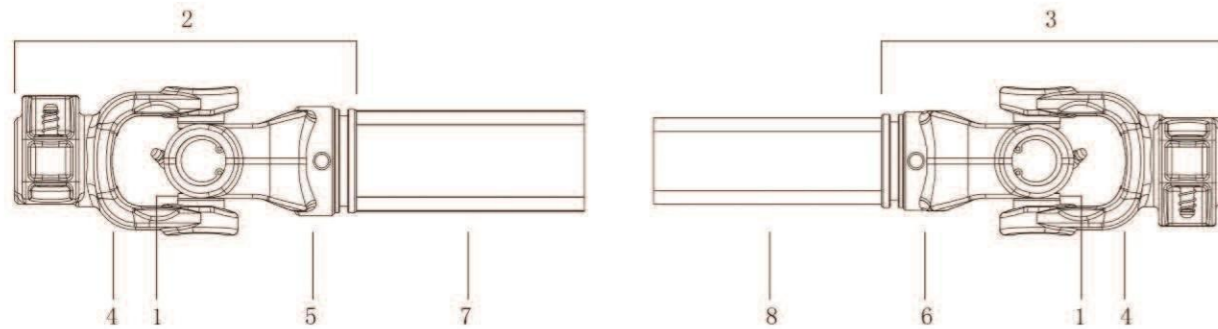


Series	Operating torque						MP (NM)
	540tr./min			1000tr./min			
	Kw	Pk	Nm	Kw	Pk	Nm	
T1	12	16	210	18	25	172	320
T2	15	21	270	23	31	220	450
T3	22	30	390	35	47	330	640
T4	26	35	460	40	55	380	780
T5	35	47	620	54	74	520	1050
T6	47	64	830	74	100	710	1450
T7	55	75	970	87	118	830	1800
T7N	55	75	970	87	118	830	1800
T8	70	95	1240	110	150	1050	2250
T38	78	105	1380	123	166	1175	2500
T9	88	120	1560	140	190	1340	2800
T10	106	145	1905	170	230	1650	3500

PTO DRIVESHAFT L SERIES

PTO DRIVESHAFT L SERIES

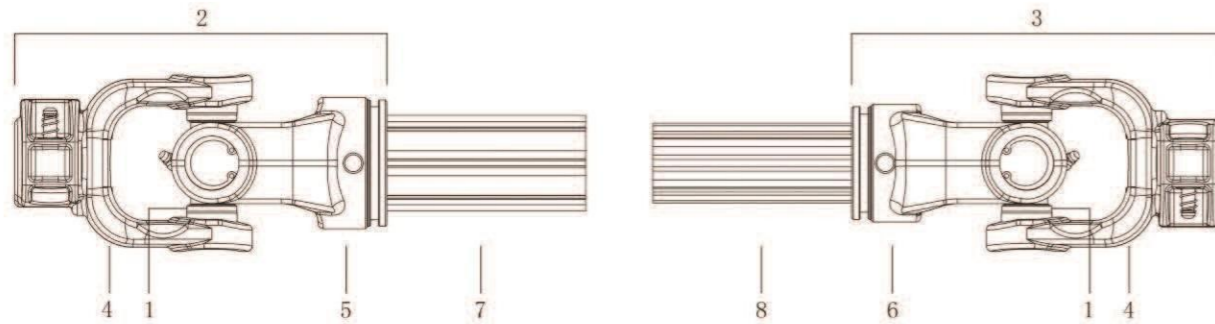
PRODUCT INTRODUCTION



Series	Cross	Joint simple		Splined yoke	Tube yoke		Tube	
		Outer	Inner		Outer	Inner	Outer	Inner
	1	2	3	4	5	6	7	8
L1	1.01 (22*54)	1.0505B+1.01 +1.06L	1.0505B+1.01 +1.07L	1.0505B	1.06L	1.07L	1.03L	1.04L
L2	2.01 (23.8*61.3)	2.0505B+2.01 +2.06L	2.0505B+2.01 +2.07L	2.0505B	2.06L	2.07L	4.03L	4.04L
L3	3.01 (27*70)	3.0505B+3.01 +3.06L	3.0505B+3.01 +2.07L	3.0505B	3.06L	3.07L		
L4	4.01 (27*74.6)	4.0505B+4.01 +4.06L	4.0505B+4.01 +4.07L	4.0505B	4.06L	4.07L		
L5	5.01 (30.2*80)	5.0505B+5.01 +5.06L	5.0505B+5.01 +5.07L	5.0505B	5.06L	5.07L	6.03L	6.04L
L6	6.01 (30.2*92)	6.0505B+6.01 +6.06L	6.0505B+6.01 +6.07L	6.0505B	6.06L	6.07L		
L32	32.01 (32*76)	32.0505B+32.01 +32.06L	32.0505B+32.01 +32.07L	32.0505B	32.06L	32.07L		

Series	Operating torque						MP (NM)
	540tr./min			1000tr./min			
	Kw	Pk	Nm	Kw	Pk	Nm	
L1	12	16	210	18	25	172	320
L2	15	21	270	23	31	220	450
L3	22	30	390	35	47	330	640
L4	26	35	460	40	55	380	780
L5	35	47	970	54	74	520	1050
L6	47	64	830	74	100	710	1450
L32	39	53	695	61	83	580	1200

PTO DRIVESHAFT S SERIES



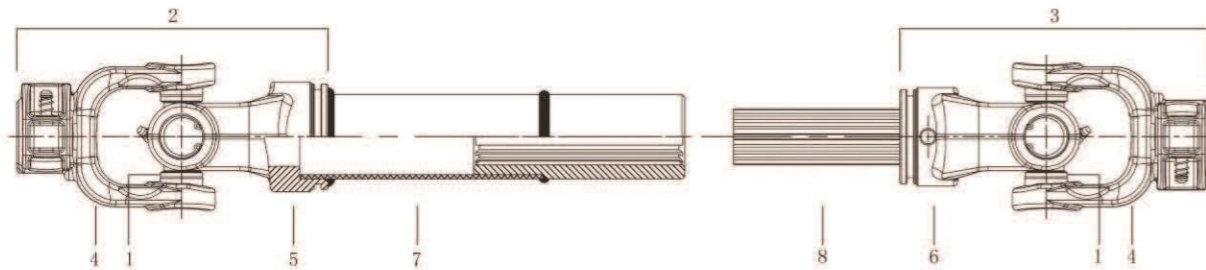
Series	Cross	Joint simple		Splined yoke	Tube yoke		Tube	
		Outer	Inner		Outer	Inner	Outer	Inner
	1	2	3	4	5	6	7	8
S6	6.01 (30.2*92)	6.0505B+6.01 +6.06S	6.0505B+6.01 +6.07S	6.0505B	6.06S	6.07S	6.03ST	6.04ST
S7	7.01 (30.2*106.5)	7.0505B+7.01 +7.06S	7.0505B+7.01 +7.07S	7.0505B	7.06S	7.07S		
S8	8.01 (35*106.5)	8.0505B+8.01 +8.06S	8.0505B+8.01 +8.07S	8.0505B	8.06S	8.07S		
S38	38.0 (38*105.6)	38.0505B+38.01 +38.06S	38.0505B+38.01 +38.07S	38.0505B	38.06S	38.07S		
S32	2400 (32*76)	32.0505B+32.01 +32.06S	32.0505B+32.01 +32.07S	32.0505B	32.06S	32.07S		
S36	2500 (36*89)	36.0505B+36.01 +36.06S	36.0505B+36.01 +36.07S	36.0505B	36.06S	36.07S		
S9	9.01 (41*108)	9.0505B+9.01 +9.06S	9.0505B+9.01 +9.07S	9.0505B	9.06S	9.07S	10.03ST	10.04ST
S10	10.01 (41*118)	10.0505B+10.01 +10.06S	10.0505B+10.01 +10.07S	10.0505B	10.06S	10.07S		
S42	2600 (42*104.5)	42.0505B+42.01 +42.06S	42.0505B+42.01 +42.07S	42.0505B	42.06S	42.07S		
S48	48.01 (48*127)	48.0505B+48.01 +48.06S	48.0505B+48.01 +48.07S	48.0505B	48.06S	48.07S		
S50	50.01 (50*118)	50.0505B+50.01 +50.06S	50.0505B+50.01 +50.07S	50.0505B	50.06S	50.07S		

PTO DRIVESHAFT S SERIES

PRODUCT INTRODUCTION



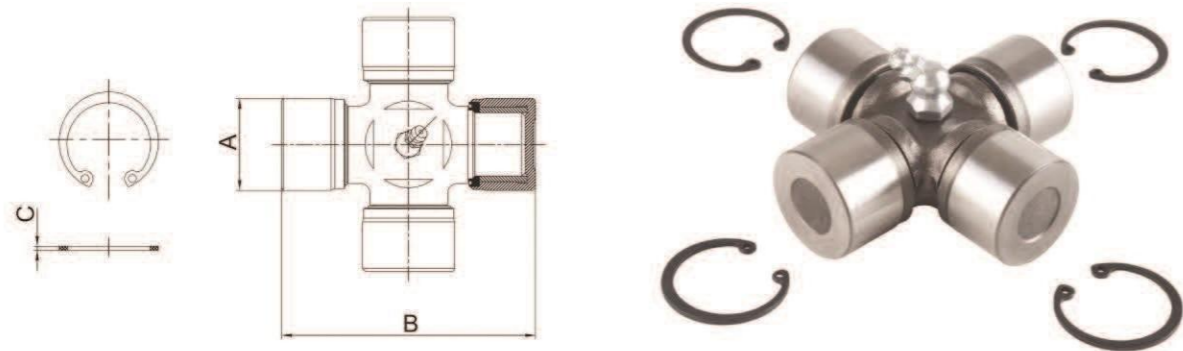
Series	Operating torque						MP (NM)
	540tr./min			1000tr./min			
	Kw	Pk	Nm	Kw	Pk	Nm	
S6	47	64	830	74	100	710	1450
S7	55	75	970	87	118	830	1800
S8	70	95	1240	110	150	1050	2250
S38	78	105	1380	123	166	1175	2500
S32	39	53	695	61	83	580	1200
S36	66	90	1175	102	139	975	2000
S9	88	120	1560	140	190	1340	2800
S10	106	145	1905	170	230	1650	3500
S42	79	107	1400	122	166	1175	2500
S48	133	180	2390	205	277	1958	4200
S50	119	162	2095	182	248	1740	3700



Series	Cross	Joint simple		Splined yoke	Tube yoke		Tube	
		Outer	Inner		Outer	Inner	Outer	Inner
	1	2	3	4	5	6	7	8
G2	2.01 (23.8*61.3)	2.0505B+2.01 +2.06G	2.0505B+2.01 +2.07G	2.0505B	2.06G	2.07G	50×2.5	G35-18
G4	4.01 (27*74.6)	4.0505B+4.01 +4.06G	4.0505B+4.01 +4.07G	4.0505B	4.06G	4.07G	50×2.5	G35-18
G5	5.01 (30.2*80)	5.0505B+5.01 +5.06G	5.0505B+5.01 +5.07G	5.0505B	5.06G	5.07G		
G6	6.01 (30.2*92)	6.0505B+6.01 +6.06G	6.0505B+6.01 +6.07G	6.0505B	6.06G	6.07G	60×3	G40-14
G7	7.01 (30.2*106.5)	7.0505B+7.01 +7.06G	7.0505B+7.01 +7.07G	7.0505B	7.06G	7.07G		
G8	8.01 (35*106.5)	8.0505B+8.01 +8.06G	8.0505B+8.01 +8.07G	8.0505B	8.06G	8.07G		
G38	38.01 (38*105.6)	38.0505B+38.01 +38.06G	38.0505B+38.01 +38.07G	38.0505B	38.06G	38.07G	65×3.5	G45-16
G42	2600 (42*104.5)	42.0505B+42.01 +42.06G	42.0505B+42.01 +42.07G	42.0505B	42.06G	42.07G		
G50	50.01 (50*118)	50.0505B+50.01 +50.06G	50.0505B+50.01 +50.07G	50.0505B	50.06G	50.07G	75×4	G55-20

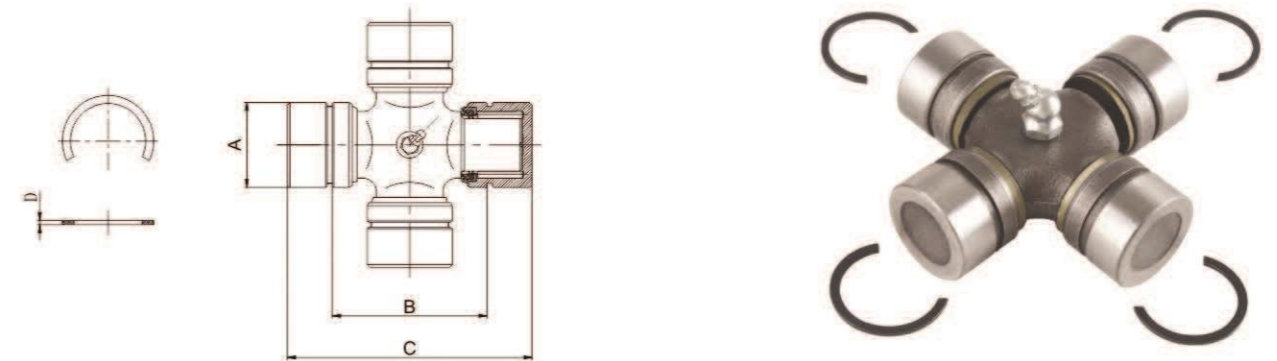
Series	Operating torque						MP (NM)
	540tr./min			1000tr./min			
	Kw	Pk	Nm	Kw	Pk	Nm	
G2	15	21	270	23	31	220	450
G4	26	35	460	40	55	380	780
G5	35	47	620	54	74	520	1050
G6	47	64	830	74	100	710	1450
G7	55	75	970	87	118	830	1800
G8	70	95	1240	110	150	1050	2250
G38	78	105	1380	123	166	1175	2500
G42	79	107	1400	122	166	1175	2500
G50	119	162	2095	182	248	1740	3700

CROSS KIT

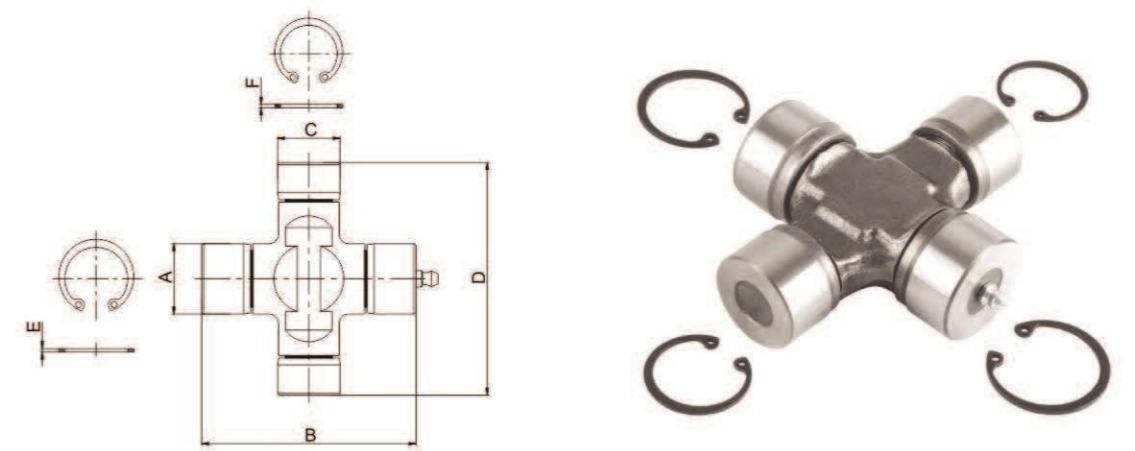


Series	A(mm)	B(mm)	C(mm)
1.01	22	54	1.2
2.01	23.8	61.3	1.2
3.01	27	70	1.2
4.01	27	74.6	1.2
5.01	30.2	80	1.5
32.01	32	76	1.5
6.01	30.2	92	1.5
7.01	30.2	106.5	1.5
7N.01	35	94	1.5
8.01	35	106.5	1.5
38.01	38	105.6	1.5
36.01	36	89	1.5
9.01	41	108	1.75
10.01	41	118	1.75
42.01	42	104.5	1.75
48.01	48	127	1.75
50.01	50	118	2

CROSS KIT



Series	A(mm)	B(mm)	C(mm)	D(mm)
JH32.01	32	57	92	1.5
JH38.01	38	57	101	3



Series	A(mm)	B(mm)	C(mm)	D(mm)	E(mm)	F(mm)
2WA.01	23.8	61.3	22	76	1.2	1.2
4WA.01	27	74.6	23.8	91	1.2	1.2
6WA.01	30.2	92	27	100	1.5	1.2
8WA.01	35	106.5	30.2	106	1.5	1.5
32WA.01	32	76	27	94	1.5	1.2
36WA.01	36	89	32	106	1.5	1.5
42WA.01	42	104.5	36	124	1.75	1.5

TUBE

TRIANGULAR TUBE



Series	Cross Kit	Outer	Inner
1	T1 54 ø22	1.03 	1.04
2	T2 61.3 ø23.8	2.03 	2.04
3	T3 70 ø27	3.03 	3.04
4	T4 74.6 ø27		4.04
5	T5 80 ø30.2	5.03 	5.04
6	T6 92 ø30.2	6.03 	6.04
7	T7 106.5 ø30.2	7.03 	7.04
8	T8 106.5 ø35	8.03 	8.04
9	T9 108 ø41	9.03 	9.04

TUBE

LEMON TUBE



Series	Cross Kit	Outer	Inner
1	ø22	1.03L 	1.04L
2	ø23.8	2.03L	2.04L
3	ø27	3.03L 	3.04L
4	ø27	4.03L	4.04L
5	ø30.2	5.03L	7.04L
6	ø30.2	6.03L 	6.04L
32	ø32	32.03L	32.04L

TUBE

STAR TUBE



Series	Cross Kit	Outer	Inner
6			
7			
7N			
8			
36			
38			
9			
10			
42			
50			

TUBE

GEAR TUBE



Series	Cross Kit		
2		2.04G	<p>Z17(18-1)M1.75 a 30°</p>
3		3.04G	
4		4.04G	
5		5.04G	
6		6.04G	<p>Z13(14-1)M2.65 a 30°</p>
7		7.04G	
7N		7N.04G	
8		8.04G	<p>Z15(16-1)M2.5 a 20°</p>
36		36.04G	
38		38.04G	
9		9.04G	
10		10.04G	
42		42.04G	
48		48.04G	<p>Z19(20-1)M2.5 a 30°</p>
50		50.04G	

TUBE

RECTANGULAR TUBE



Series	Cross Kit	Outer	Inner
1		1.03R 	1.04R
2		2.03R 	2.04R
3		3.03R	3.04R
4		4.03R	4.04R
5		5.03R 	5.04R
6		6.03R	6.04R
32		32.03R	32.04R

TUBE

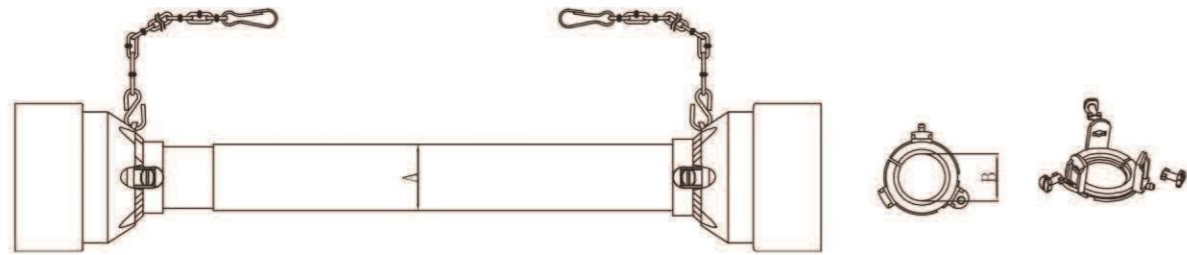
HEXAGONAL TUBE



Series	Cross Kit	Outer	Inner
40HP		HT.03T1 	HT.04T1
50HP			
80HP		HT.03 	HT.04
90HP			

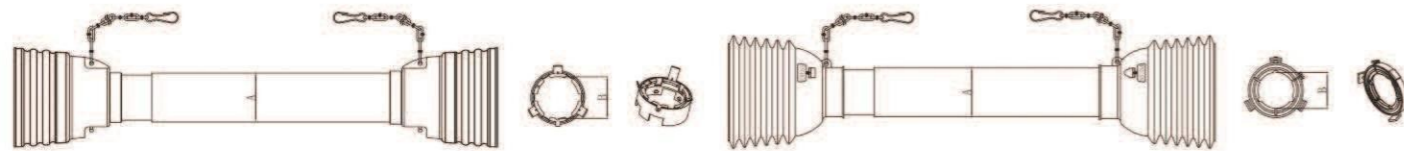
SAFTY SHIELD

SHIELD I



Series	Tube(A)		Retaining collar(B)		Color
	Inner	Outer	Inner	Outer	
1	48.5	54	34	40	B I:Black Y I:Yellow
2	61	66.5	40	47	
3/4	61	66.5	46	53	
5	75	81	54	62	
6/7/8	75	81	59.5	68.5	
42/48/50	90	96	69.5	81.5	

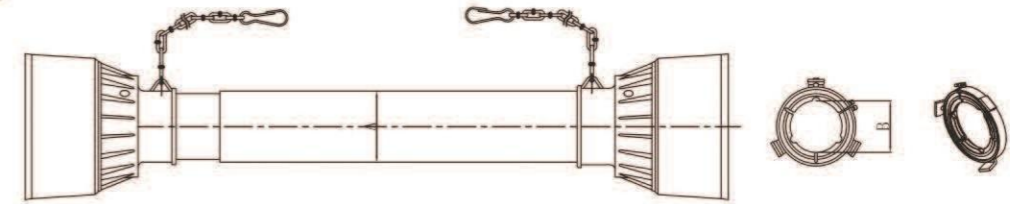
SHIELD II



Series	Tube(A)		Retaining collar(B)		Color
	Inner	Outer	Inner	Outer	
1	48.5	54	34	40	B II:Black Y II:Yellow Y B II:Yellow+Black
2	61	66.5	40	47	
3/4	61	66.5	46	53	
5	75	81	54	62	
6/7/8	75	81	59.5	68.5	
42/48/50	90	96	69.5	81.5	

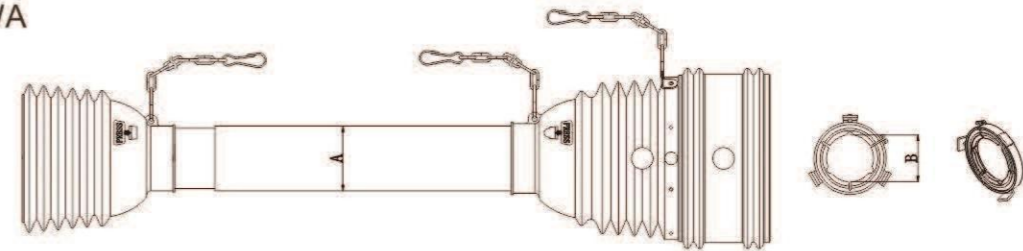
SAFTY SHIELD

SHIELD III



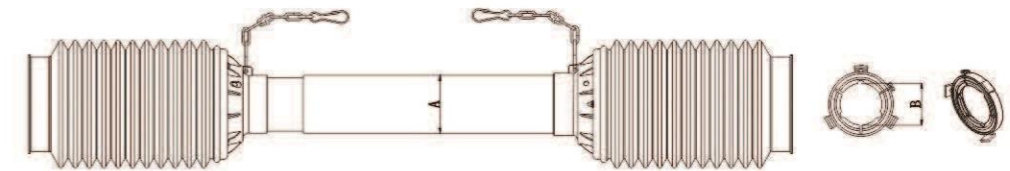
Series	Tube(A)		Retaining collar(B)		Color
	Inner	Outer	Inner	Outer	
1	48.5	54	34	40	B III:Black Y III:Yellow
2	61	66.5	40	47	
3/4	61	66.5	46	53	
5	75	81	54	62	
6/7/8	75	81	59.5	68.5	
42/48/50	90	96	69.5	81.5	

SHIELD WA



Series	Tube(A)		Retaining collar(B)		Wide Angle Shield		Color
	Inner	Outer	Inner	Outer	C	D	
4	61	66.5	46	53	117	210	B WA:Black Y WA:Yellow Y B WA:Yellow+Black
6/32/36	75	81	59.5	68.5	123	225	
8	75	81	62.5	72.5	127	245	

SHIELD N

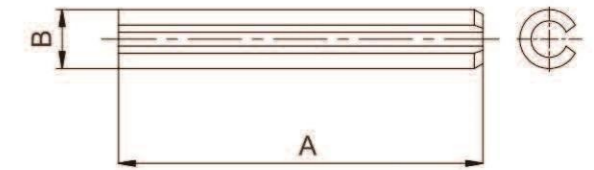


Series	Tube(A)		Retaining collar(B)		Color
	Inner	Outer	Inner	Outer	
1	48.5	54	34	40	B N:Black Y N:Yellow
2	61	66.5	40	47	
3/4	61	66.5	46	53	
5	75	81	54	62	
6/7/8	75	81	59.5	68.5	
42	90	96	69.5	81.5	

PUSH PIN & TAPER PIN

Reference	L(mm)	Drawings
00.0201×47	47	
00.0201×44.5	44.5	
00.0201×59	59	
00.0201×56	56	
00.0202×76.5	76.5	
00.0202×68	68	
00.0202×73	73	
00.0202×83	83	
00.0202×85	85	
00.0202×88	88	
00.0203×85	85	
00.0204×69	69	
00.0205×43	43	
00.0206×54	54	
00.0207×85	85	
00.0208×85	85	
00.0208×77	77	
00.0209×91	91	
00.0210×77	77	
00.0210×75	75	

SPRING PIN&SAFETY CHAINS

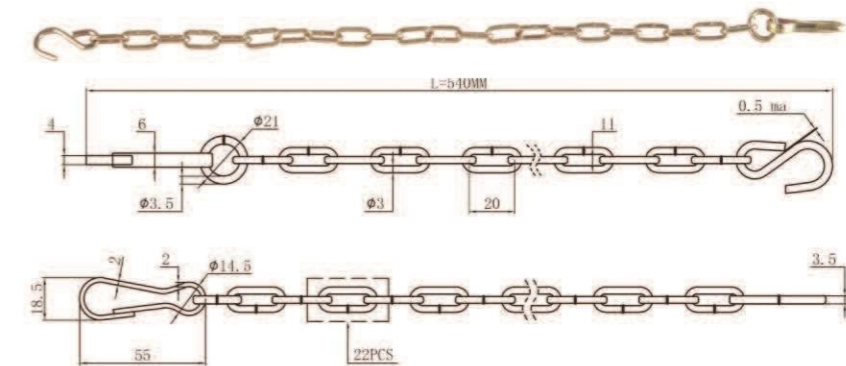


For Tube	A(mm)	B(mm)
1.04	45	Φ8
2.04	50	
3.04	55	
4.04	55	
5.04	65	
6.04	70	Φ10
7.04	70	
8.04	90	

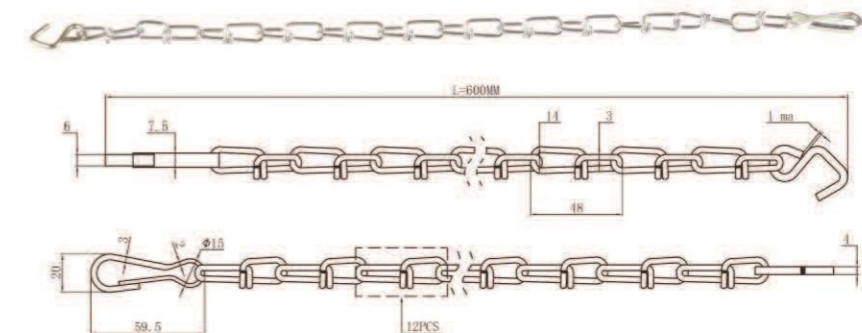
For Tube	A(mm)	B(mm)
1.03	50	Φ8
2.03	55	
3.03	60	
4.03	60	
5.03	70	Φ10
6.03	75	
7.03	75	
8.03	90	

SAFETY CHAINS

Golden Safety Chains



Silvery Safety Chains



CODE EXPLANATION

For example

T - 4 - YB - II - P - 4.0505B - 4FFV1 * L

↓ ↓ ↓ ↓ ↓ ↓ ↓ ↓

1 2 3 4 5 6 7 8



- 1: The Types of Tubes(e.g.: T; L;ST;G)
- 2: The Series of Cross Kits
- 3: The Code of Color (YB=Yellow+Black)
- 4: The Code of Safety Shield Structure
- 5: Connection Method: Pin Connected
- 6: The Tractor End Yokes
- 7: The Implement End Yokes
- 8: Minimum Overall Length

CODE FOR U-JOINT

For example

4.0501B + 4.01 + 4.06

↓ ↓ ↓

1 2 3

- 1: One end yoke
- 2: The series of cross kits
- 3: The other end yoke



4.0501B+4.01+4.06

YOKE

TUBE AND SPLINED YOKE

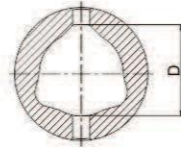
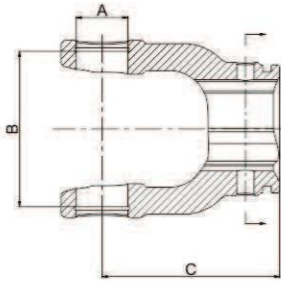
OUTER TUBE YOKE-06 INNER TUBE YOKE-07	
OUTER TUBE YOKE-06L INNER TUBE YOKE-07L	
OUTER TUBE YOKE-06ST INNER TUBE YOKE-07ST	
SPLINED YOKE 01 -PUSH PIN	
SPLINED YOKE 02 -INTERFERING BOLT	
SPLINED YOKE 03 -NON-INTERFERING BOLT	
SPLINED YOKE 04 -BALL ATTACHMENT	
SPLINED YOKE 05 -PUSH PIN	
SPLINED YOKE 07 -PUSH PIN	
SPLINED YOKE 08 -PUSH PIN	
SPLINED YOKE 11 -DOUBLE PUSH PIN	
SPLINED YOKE 13 -COLLAR	

PLAIN BORE YOKE

PLAIN BORE YOKE A -PIN HOLE	
PLAIN BORE YOKE B -KEYWAY	
PLAIN BORE YOKE C -KEYWAY & THREADED HOLE	
PLAIN BORE YOKE D -KEYWAY & CLAMP BOLT	
PLAIN BORE YOKE E -MULTIPLE PIN HOLES	
PLAIN BORE YOKE F -VERTICAL PIN HOLE	
PLAIN BORE YOKE H -PIN HOLE & THREADED HOLE	
ROUND HOLE YOKE -FOUR CORNER	

YOKE

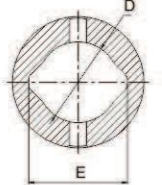
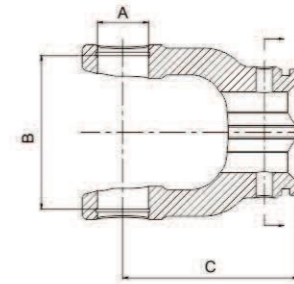
TRIANGULAR YOKE



Series	A(mm)	B(mm)	C(mm)	D(mm)
1.06	22	54	77	32.4
1.07	22	54	77	26.6
2.06	23.8	61.3	82	36.1
2.07	23.8	61.3	82	29
3.06	27	70	90	43.4
3.07	27	70	90	36.1
4.06	27	74.6	90	43.4
4.07	27	74.6	90	36.1
5.06	30.2	80	98	51.3
5.07	30.2	80	98	44.7
32.06	32	76	98	51.3
32.07	32	76	98	44.7
6.06	30.2	92	104	53.6
6.07	30.2	92	104	44.7
7.06	30.2	106.5	117	53.6
7.07	30.2	106.5	117	44.7
7N.06	35	94	106	53.6
7N.07	35	94	106	44.7
36.06	36	89	106	53.6
36.07	36	89	106	44.7
8.06	35	106.5	121	62.7
8.07	35	106.5	121	53.6
38.06	38	105.6	121	62.7
38.07	38	105.6	121	53.6
9.06	41	108	130	62.7
9.07	41	108	130	53.6
10.06	41	118	125	62.7
10.07	41	118	125	53.6

YOKE

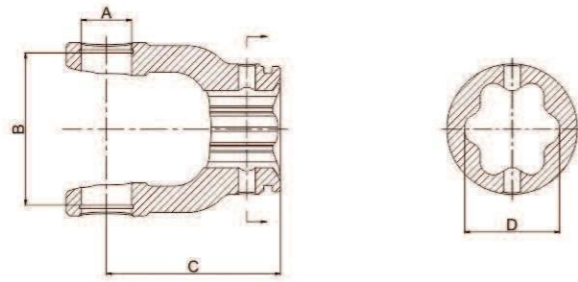
LEMON YOKE



Series	A(mm)	B(mm)	C(mm)	D(mm)	E(mm)
1.06L	22	54	77	30	39
1.07L	22	54	77	23.7	30.8
2.06L	23.8	61.3	82	41.2	48
2.07L	23.8	61.3	82	34.5	40.1
3.06L	27	70	90	41.2	48
3.07L	27	70	90	34.5	40.1
4.06L	27	74.6	90	41.2	48
4.07L	27	74.6	90	34.5	40.1
5.06L	30.2	80	98	48	57.5
5.07L	30.2	80	98	39.5	49
32.06L	32	76	98	48	57.5
32.07L	32	76	98	39.5	49
6.06L	30.2	92	104	48	57.5
6.07L	30.2	92	104	39.5	49
7N.06L	35	94	106	48	57.5
7N.07L	35	94	106	39.5	49
36.06L	36	89	106	48	57.5
36.07L	36	89	106	39.5	49

YOKE

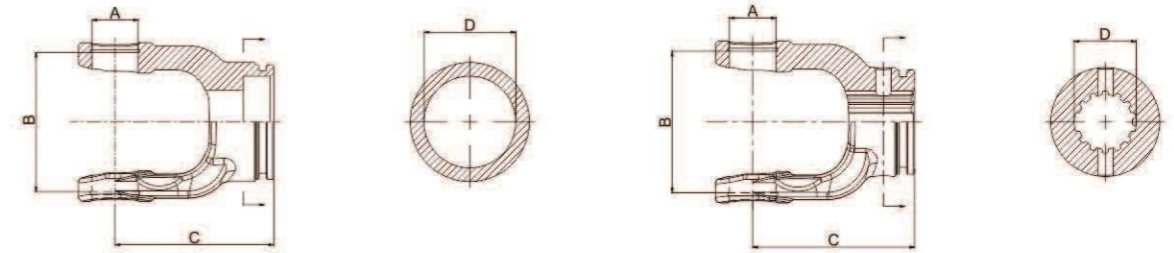
STAR YOKE



Series	A(mm)	B(mm)	C(mm)	D(mm)
6.06ST	30.2	92	104	56.8
6.07ST	30.2	92	104	47.4
7.06ST	30.2	106.5	117	56.8
7.07ST	30.2	106.5	117	47.4
8.06ST	35	106.5	121	56.8
8.07ST	35	106.5	121	47.4
7N.06ST	35	94	106	56.8
7N.07ST	35	94	106	47.4
32.06ST	32	76	98	56.8
32.07ST	32	76	98	47.4
36.06ST	36	89	106	56.8
36.07ST	36	89	106	47.4
9.06ST	41	108	130	67.5
9.07ST	41	108	130	56.8
10.06ST	41	118	125	67.5
10.07ST	41	118	125	56.8
42.06ST	42	104.5	130	67.5
42.07ST	42	104.5	130	56.8
50.06ST	50	118	133	67.5
50.07ST	50	118	133	56.8

YOKE

GEAR YOKE

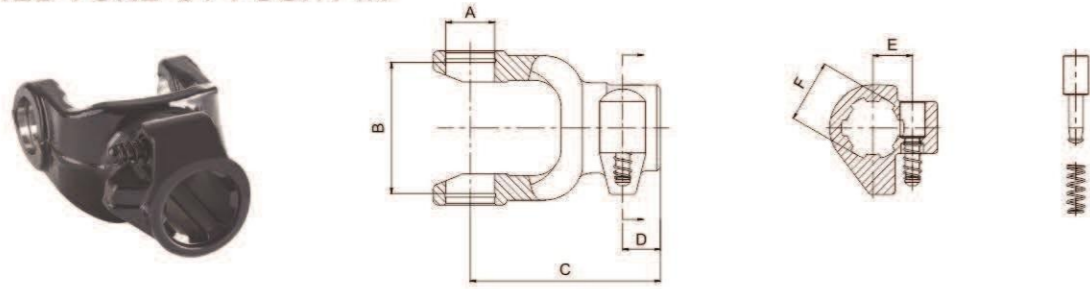


Series	A(mm)	B(mm)	C(mm)	D(mm)
2.06G	23.8	61.3	82	50
2.07G	23.8	61.3	82	35
4.06G	27	74.6	90	50
4.07G	27	74.6	90	35
5.06G	30.2	80	98	60
5.07G	30.2	80	98	40
6.06G	30.2	92	104	60
6.07G	30.2	92	104	40
7.06G	30.2	106.5	117	60
7.07G	30.2	106.5	117	40
8.06G	35	106.5	121	65
8.06G	35	106.5	121	45
38.06G	38	105.6	121	65
38.07G	38	105.6	121	45
42.06G	42	104.5	130	75
42.07G	42	104.5	130	55
50.06G	50	118	133	75
50.07G	50	118	133	55

YOKE

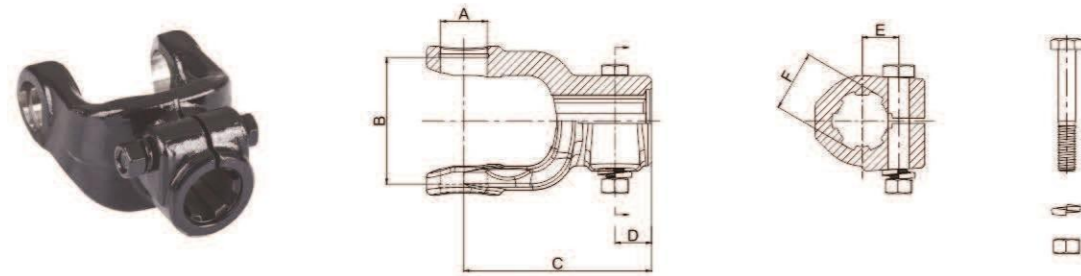
YOKE

SPLINED YOKE 01-PUSH PIN



Series	A(mm)	B(mm)	C(mm)	D(mm)	E(mm)	F
1.0501B	22	54	93	21	22	1 3/8" Z6
2.0501B	23.8	61.3	99	21		
3.0501B	27	70	104	21		
4.0501B	27	74.6	106	21		
5.0501B	30.2	80	110	21		
32.0501B	32	76	110	21		
6.0501B	30.2	92	115	21		
7.0501B	30.2	106.5	130	21		
8.0501B	35	106.5	130	21		
38.0501B	38	105.6	130	21		

SPLINED YOKE 02-INTERFERING BOLT



Series	A(mm)	B(mm)	C(mm)	D(mm)	E(mm)	F
1.0502B	22	54	93	23	21	1 3/8" Z6
1.0502D					22.8	1 3/8" Z21
1.0502G						8-32x38x6
2.0502B	23.8	61.3	102	21	21	1 3/8" Z6
2.0502D					22.8	1 3/8" Z21
2.0502G						8-32x38x6
3.0502B	27	70	108	21	21	1 3/8" Z6
3.0502D					22.8	1 3/8" Z21
3.0502G						8-32x38x6
4.0502B	27	74.6	108	21	21	1 3/8" Z6
4.0502D					22.8	1 3/8" Z21
4.0502G						8-32x38x6

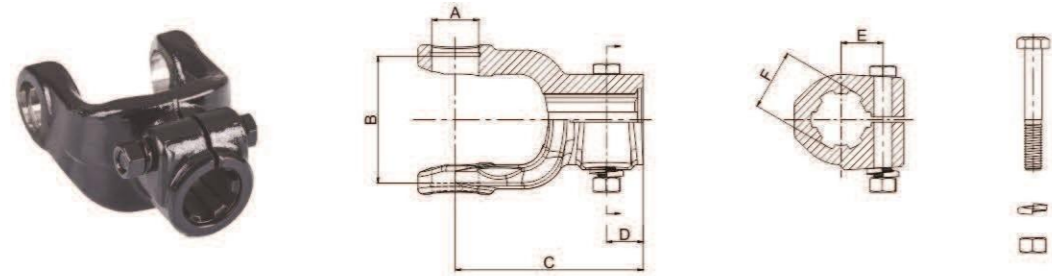
SPLINED YOKE 02-INTERFERING BOLT

Series	A(mm)	B(mm)	C(mm)	D(mm)	E(mm)	F	
5.0502B	30.2	80	108	21	21	1 3/8" Z6	
5.0502D						1 3/8" Z21	
5.0502G					22.8	8-32x38x6	
32.0502B	32	76	108	21	21	1 3/8" Z6	
32.0502D						1 3/8" Z21	
32.0502G					22.8	8-32x38x6	
6.0502B	30.2	92	118	23	21	1 3/8" Z6	
6.0502D						1 3/8" Z21	
6.0502G			22.8		8-32x38x6		
6.0502C				118	22	26	1 3/4" Z6
6.0502E						1 3/4" Z20	
7.0502B	30.2	106.5	130	25	21	1 3/8" Z6	
7.0502D						1 3/8" Z21	
7.0502G					22.8	8-32x38x6	
36.0502B	36	89	122	21	21	1 3/8" Z6	
36.0502D						1 3/8" Z21	
36.0502G					22.8	8-32x38x6	
36.0502C				122	21	26	1 3/4" Z6
36.0502E						1 3/4" Z20	
7N.0502B	35	94	122	21	21	1 3/8" Z6	
7N.0502D						1 3/8" Z21	
7N.0502G					22.8	8-32x38x6	
7N.0502C				122	21	26	1 3/4" Z6
7N.0502E						1 3/4" Z20	
8.0502B	35	106.5	130	25	21	1 3/8" Z6	
8.0502D						1 3/8" Z21	
8.0502G					22.8	8-32x38x6	
8.0502C				130	25	26	1 3/4" Z6
8.0502E						1 3/4" Z20	

YOKE

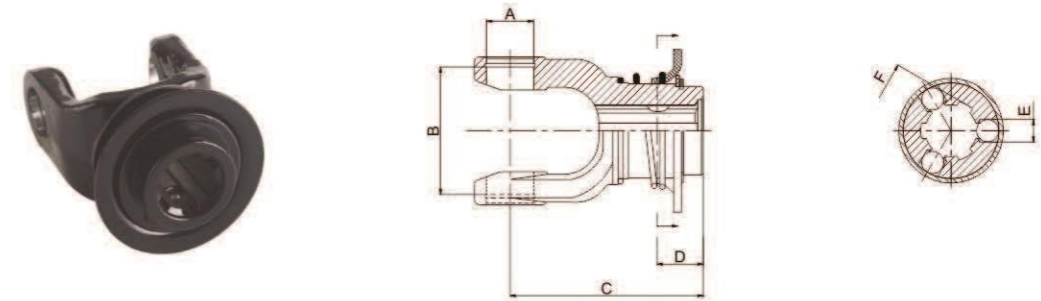
YOKE

SPLINED YOKE 03 -NON-INTERFREING BOLT



Series	A(mm)	B(mm)	C(mm)	D(mm)	E(mm)	F
1.0503B	22	54	93	23	23.5	1 3/8" Z6
1.0503D						1 3/8" Z21
2.0503B	23.8	61.3	102	21	23.5	1 3/8" Z6
2.0503D						1 3/8" Z21
3.0503B	27	70	108	21	23.5	1 3/8" Z6
3.0503D						1 3/8" Z21
4.0503B	27	74.6	108	21	23.5	1 3/8" Z6
4.0503D						1 3/8" Z21
5.0503B	30.2	80	108	21	25	1 3/8" Z6
5.0503D						1 3/8" Z21
32.0503B	32	76	108	21	25	1 3/8" Z6
32.0503D						1 3/8" Z21
6.0503B	30.2	92	118	23	25	1 3/8" Z6
6.0503D						1 3/8" Z21
7.0503B	30.2	106.5	130	25	25	1 3/8" Z6
7.0503D						1 3/8" Z21
7N.0503B	35	94	122	21	25	1 3/8" Z6
7N.0503D						1 3/8" Z21
8.0503B	35	106.5	130	25	25	1 3/8" Z6
8.0503D						1 3/8" Z21
8.0503C			130		30	1 3/4" Z6
8.0503E						1 3/4" Z20
36.0503B	36	89	122	21	25	1 3/8" Z6
36.0503D						1 3/8" Z21

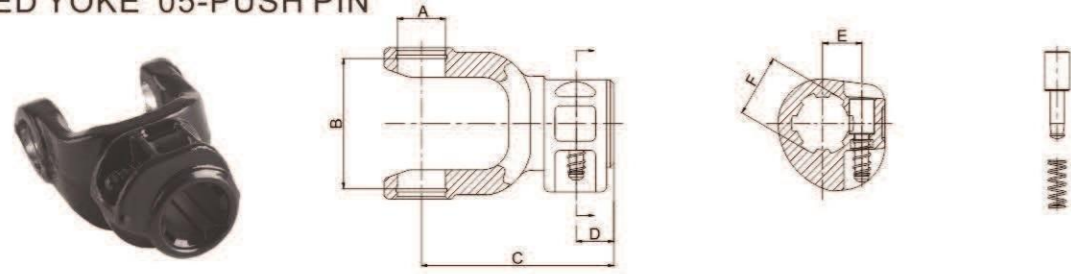
SPLINED YOKE 04-WITH BALL ATTACHMENT



Series	A(mm)	B(mm)	C(mm)	D(mm)	E(mm)	F
1.0504B	22	54	100	26	Φ13	1 3/8"Z6
1.0504D						1 3/8"Z21
2.0504B	23.8	61.3	102	26	Φ13	1 3/8"Z6
2.0504D						1 3/8"Z21
3.0504B	27	70	111	26	Φ13	1 3/8"Z6
3.0504D						1 3/8"Z21
4.0504B	27	74.6	111	26	Φ13	1 3/8"Z6
4.0504D						1 3/8"Z21
5.0504B	30.2	80	117	26	Φ13	1 3/8"Z6
5.0504D						1 3/8"Z21
32.0504B	32	76	117	26	Φ13	1 3/8"Z6
32.0504D						1 3/8"Z21
6.0504B	30.2	92	123	26	Φ13	1 3/8"Z6
6.0504D						1 3/8"Z21
6.0504C			148	34	Φ16	1 3/4"Z6
6.0504E						1 3/4"Z20
7.0504B	30.2	106.5	137	26	Φ13	1 3/8"Z6
7.0504D						1 3/8"Z21
7N.0504B	35	94	123	26	Φ13	1 3/8"Z6
7N.0504D						1 3/8"Z21
8.0504B	35	106.5	130	26	Φ13	1 3/8"Z6
8.0504D						1 3/8"Z21
6.0504C			159	34	Φ16	1 3/4"Z6
6.0504E						1 3/4"Z20

YOKE

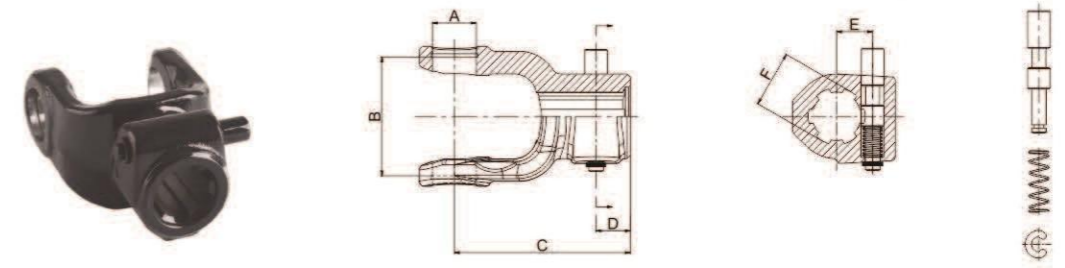
SPLINED YOKE 05-PUSH PIN



Series	A(mm)	B(mm)	C(mm)	D(mm)	E(mm)	F
1.0505B	22	54	93	21	22	1 3/8" Z6
1.0505D					1 3/8" Z21	
1.0505G					23.8	8-32X38X6
2.0505B	23.8	61.3	99	21	22	1 3/8" Z6
2.0505D					1 3/8" Z21	
2.0505G					23.8	8-32X38X6
3.0505B	27	70	102	21	22	1 3/8" Z6
3.0505D					1 3/8" Z21	
3.0505G					23.8	8-32X38X6
4.0505B	27	74.6	108	21	22	1 3/8" Z6
4.0505D					1 3/8" Z21	
4.0505G					23.8	8-32X38X6
5.0505B	30.2	80	111	21	22	1 3/8" Z6
5.0505D					1 3/8" Z21	
5.0505G					23.8	8-32X38X6
32.0505B	32	76	111	21	22	1 3/8" Z6
32.03205D					1 3/8" Z21	
32.03205G					23.8	8-32X38X6
6.0505B	30.2	92	117	21	22	1 3/8" Z6
6.0505D					1 3/8" Z21	
6.0505G					23.8	8-32X38X6
7.0505B	30.2	106.5	130	21	22	1 3/8" Z6
7.0505D					1 3/8" Z21	
7.0505G					23.8	8-32X38X6
36.0505B	36	89	119	21	22	1 3/8" Z6
36.0505D					1 3/8" Z21	
36.0505G					23.8	8-32X38X6
7N.0505B	35	94	119	21	22	1 3/8" Z6
7N.0505D					1 3/8" Z21	
7N.0505G					23.8	8-32X38X6
8.0505B	35	106.5	130	21	22	1 3/8" Z6
8.0505D					1 3/8" Z21	
8.0505G					23.8	8-32X38X6

YOKE

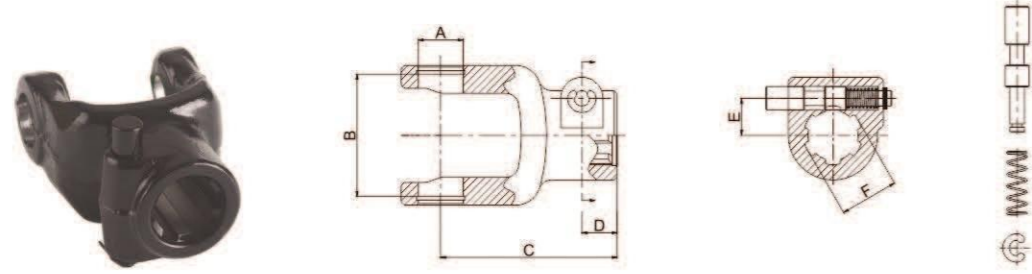
SPLINED YOKE 07-PUSH PIN



Series	A(mm)	B(mm)	C(mm)	D(mm)	E(mm)	F
1.0507B	22	54	93	23	22	1 3/8" Z6
1.0507D					1 3/8" Z21	
1.0507G					23.8	8-32X38X6
2.0507B	23.8	61.3	102	21	22	1 3/8" Z6
2.0507D					1 3/8" Z21	
2.0507G					23.8	8-32X38X6
3.0507B	27	70	108	21	22	1 3/8" Z6
3.0507D					1 3/8" Z21	
3.0507G					23.8	8-32X38X6
4.0507B	27	74.6	108	21	22	1 3/8" Z6
4.0507D					1 3/8" Z21	
4.0507G					23.8	8-32X38X6
5.0507B	30.2	80	108	21	22	1 3/8" Z6
5.0507D					1 3/8" Z21	
5.0507G					23.8	8-32X38X6
32.0507B	32	76	108	21	22	1 3/8" Z6
32.0507D					1 3/8" Z21	
32.0507G					23.8	8-32X38X6
6.0507B	30.2	92	118	23	22	1 3/8" Z6
6.0507D					1 3/8" Z21	
6.0507G			23.8	8-32X38X6		
6.0507C	30.2	92	118	22	26.5	1 3/4" Z6
6.0507E					1 3/4" Z20	
7.0507B	30.2	106.5	130	25	22	1 3/8" Z6
7.0507D					1 3/8" Z21	
7.0507G					23.8	8-32X38X6
8.0507B	35	106.5	130	25	22	1 3/8" Z6
8.0507D					1 3/8" Z21	
8.0507G			23.8	8-32X38X6		
8.0507C	35	106.5	130	25	26.5	1 3/4" Z6
8.0507E					1 3/4" Z20	

YOKE

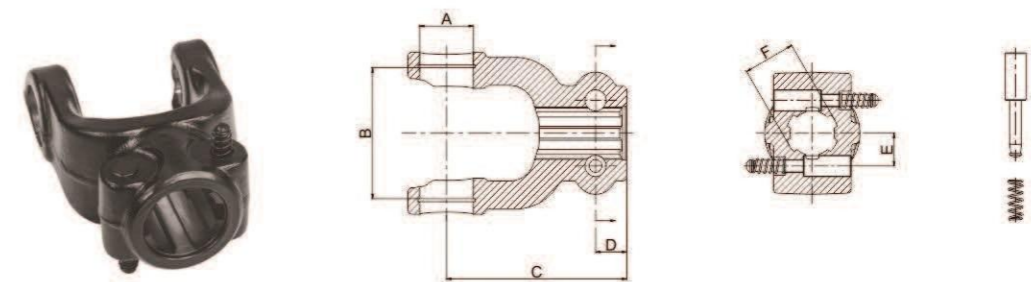
SPLINED YOKE 08-PUSH PIN



Series	A(mm)	B(mm)	C(mm)	D(mm)	E(mm)	F
1.0508B	22	54	89	14	22	1 3/8" Z6
1.0508D						1 3/8" Z21
2.0508B	23.8	61.3	100	20	22	1 3/8" Z6
2.0508D						1 3/8" Z21
3.0508B	27	70	102	22	22	1 3/8" Z6
3.0508D						1 3/8" Z21
4.0508B	27	74.6	108	21	22	1 3/8" Z6
4.0508D						1 3/8" Z21
5.0508B	30.2	80	111	20	22	1 3/8" Z6
5.0508D						1 3/8" Z21
32.0508B	32	76	111	20	22	1 3/8" Z6
32.0508D						1 3/8" Z21
6.0508B	30.2	92	118	21	22	1 3/8" Z6
6.0508D						1 3/8" Z21
6.0508C	30.2	92	124	24	26.5	1 3/4" Z6
6.0508E						1 3/4" Z20
7.0508B	30.2	106.5	125	24	22	1 3/8" Z6
7.0508D						1 3/8" Z21

YOKE

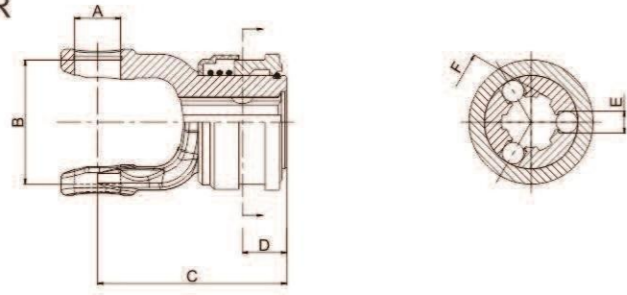
SPLINED YOKE 11-PUSH PIN



Series	A(mm)	B(mm)	C(mm)	D(mm)	E(mm)	F
6.0511B	30.2	92	121	21	22	1 3/8" Z6
6.0511D			121			1 3/8" Z21
6.0511G	30.2	92	121	21	23.8	8-32X38X6
6.0511C			121		26.5	1 3/4" Z6
36.0511B	36	89	121	21	22	1 3/8" Z6
36.0511D			121			23.8
36.0511G	36	89	121	21	26.5	1 3/4" Z6
36.0511C						121
7.0511B	30.2	106.5	128	21	22	1 3/8" Z6
7.0511D						128
7.0511G	30.2	106.5	128	21	23.8	8-32X38X6
7.0511C						128
8.0511B	35	106.5	128	21	22	1 3/8" Z6
8.0511D						128
8.0511G	35	106.5	128	21	26.5	1 3/4" Z6
8.0511C						128
8.0511E	35	106.5	128	21	26.5	1 3/4" Z20
8.0511C						128
10.0511B	41	118	140	28	22	1 3/8" Z6
10.0511D						140
10.0511G	41	118	140	28	23.8	8-32X38X6
10.0511C						140
10.0511E	41	118	140	28	26.5	1 3/4" Z20
10.0511C						140
42.0511B	42	104.5	138	21	22	1 3/8" Z6
42.0511D						138
42.0511G	42	104.5	138	21	23.8	8-32X38X6
42.0511C						138
42.0511E	42	104.5	138	21	26.5	1 3/4" Z20
42.0511C						138
50.0511B	50	118	145	21	22	1 3/8" Z6
50.0511D						145
50.0511G	50	118	145	21	23.8	8-32X38X6
50.0511C						145
50.0511E	50	118	145	21	26.5	1 3/4" Z20
50.0511C						145

YOKE

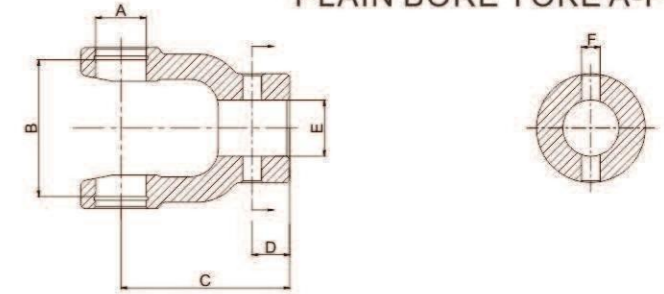
SPLINED YOKE 13-WITH COLLAR



Series	A(mm)	B(mm)	C(mm)	D(mm)	E(mm)	F
1.0513B	22	54	100	26	Φ13	1 3/8"Z6
1.0513D						1 3/8"Z21
2.0513B	23.8	61.3	102	26	Φ13	1 3/8"Z6
2.0513D						1 3/8"Z21
3.0513B	27	70	111	26	Φ13	1 3/8"Z6
3.0513D						1 3/8"Z21
4.0513B	27	74.6	111	26	Φ13	1 3/8"Z6
4.0513D						1 3/8"Z21
5.0513B	30.2	80	117	26	Φ13	1 3/8"Z6
5.0513D						1 3/8"Z21
6.0513B	30.2	92	123	26	Φ13	1 3/8"Z6
6.0513D						1 3/8"Z21
6.0513C				26	Φ13	1 3/8"Z6
6.0513E						1 3/8"Z21
7.0513B						30.2
7.0513D	1 3/8"Z21					
36.0513B	36	89	123	26	Φ13	1 3/8"Z6
36.0513D						1 3/8"Z21
7N.0513B	35	94	123	26	Φ13	1 3/8"Z6
7N.0513D						1 3/8"Z21
8.0513B	35	106.5	137	26	Φ13	1 3/8"Z6
8.0513D						1 3/8"Z21
8.0513C	35	106.5	137	26	Φ16	1 3/4"Z6
8.0513E						1 3/4"Z20

YOKE

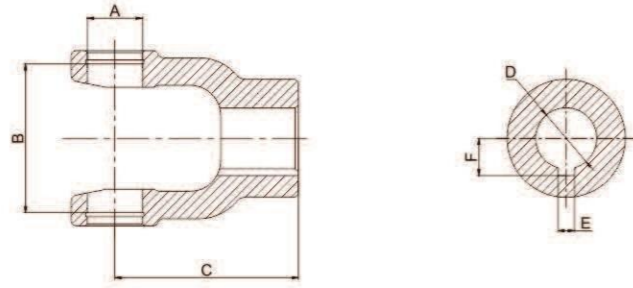
PLAIN BORE YOKE A-PIN HOLE



Series	A(mm)	B(mm)	C(mm)	D(mm)	E(mm)	F(mm)
1.05A20	22	54	77	20	20	6
1.05A22					22	8
1.05A25					25	10
1.05A30					30	
1.05A31.8					31.8	
2.05A20	23.8	61.3	82	20	20	6
2.05A22					22	8
2.05A25					25	10
2.05A30					30	
3.05A22	27	70	90	20	22	8
3.05A25					25	10
3.05A30					30	
3.05A35					35	13
4.05A22					27	74.6
4.05A25	25	10				
4.05A30	30					
4.05A31.8	25	31.8	13			
4.05A35		35				
5.05A30	30.2	80	98	20	30	10
5.05A35					35	13
5.05A40					40	
6.05A30	30.2	92	104	20	30	10
6.05A35					35	13
6.05A40					40	
6.05A42					42	13
7.05A35					30.2	
7.05A40	40					
7.05A42	42					
7.05A45	45	13				
8.05A35	35		106.5	121		25
8.05A40		40				
8.05A42		42			13	
8.05A45		45				

YOKE

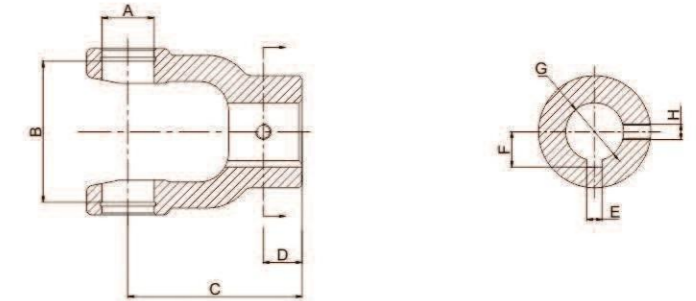
PLAIN BORE YOKE B-KEYWAY



Series	A(mm)	B(mm)	C(mm)	D(mm)	E(mm)	F(mm)
1.05B20	22	54	77	20	6	12.8
1.05B22				22		13.8
1.05B25				25	8	15.8
1.05B30				30		18.3
2.05B20	23.8	61.3	82	20	6	12.8
2.05B22				22	13.8	
2.05B25				25	8	15.8
3.05B22	27	70	90	22	6	13.8
3.05B25				25	8	15.8
3.05B30				30	8	18.3
3.05B35				35	10	20.8
4.05B22	27	74.6	90	22	6	13.8
4.05B25				25	8	15.8
4.05B30				30	8	18.3
4.05B35				35	10	20.8
5.05B30	30.2	80	98	30	8	18.3
5.05B35				35	10	20.8
5.05B40				40	12	23.3
6.05B30	30.2	92	104	30	8	18.3
6.05B35				35	10	20.8
6.05B40				40	12	23.3
6.05B42				42		24.3
7.05B35	30.2	106.5	117	35	10	20.8
7.05B40				40	12	23.3
7.05B42				42	24.3	
7.05B45				45	14	26.3
8.05B35	35	106.5	121	35	10	20.8
8.05B40				40	12	23.3
8.05B42				42	24.3	
8.05B45				45	14	26.3

YOKE

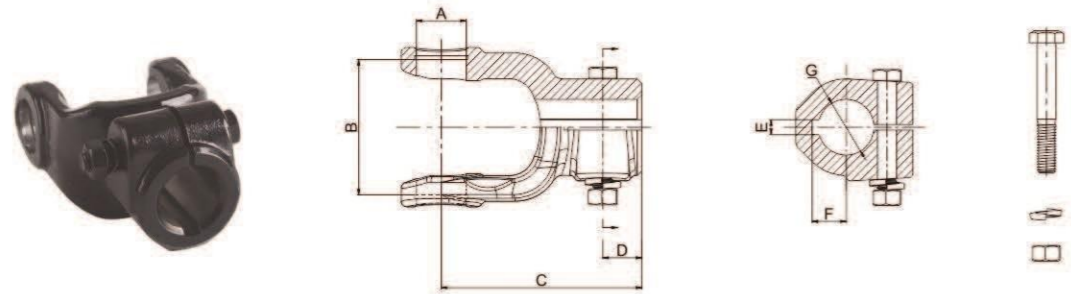
PLAIN BORE YOKE C-KEYWAY & THREADED HOLE



Series	A(mm)	B(mm)	C(mm)	D(mm)	E(mm)	F(mm)	G(mm)	H(mm)	
1.05C20	22	54	77	20	6	12.8	20	M6	
1.05C22						13.8	22		
1.05C25						15.8	25	M8	
1.05C30						18.3	30		
2.05C20	23.8	61.3	82	20	6	12.8	20	M6	
2.05C22						13.8	22		
2.05C25						15.8	25	M8	
2.05C30		18.3	30						
3.05C22	27	70	90	15	6	13.8	22	M6	
3.05C25					8	15.8	25	M8	
3.05C30					20	18.3	30		
3.05C35					10	20.8	35	M10	
4.05C22	27	74.6	90	20	6	13.8	22	M6	
4.05C25						8	15.8	25	M8
4.05C30						18.3	30		
4.05C35		10	20.8	35	M10				
5.05C30	30.2	80	98	20	8	18.3	30	M8	
5.05C35						10	20.8	35	M10
5.05C40						12	23.3	40	M12
6.05C30	30.2	92	104	20	8	18.3	30	M8	
6.05C35						10	20.8	35	M10
6.05C40						12	23.3	40	M12
6.05C42						12	24.3	42	
7.05C35	30.2	106.5	117	25	10	20.8	35	10	
7.05C40						12	23.3	40	12
7.05C42						12	24.3	42	
7.05C45						14	26.3	45	14
8.05C35	35	106.5	121	25	10	20.8	35	M10	
8.05C40						12	23.3	40	M12
8.05C42						12	24.3	42	
8.05C45						14	26.3	45	M14

YOKE

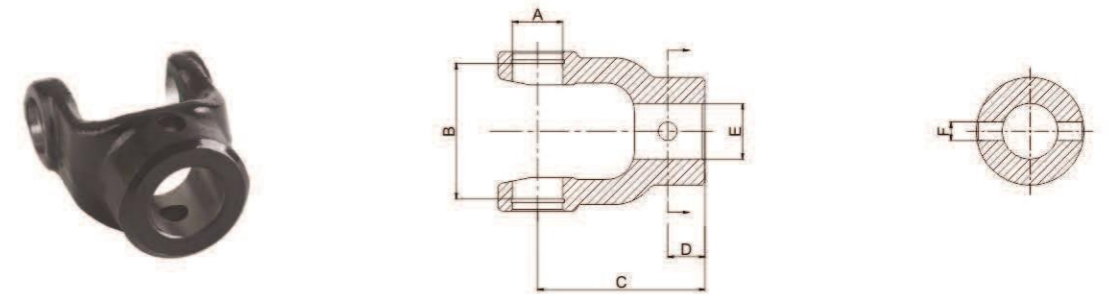
PLAIN BORE YOKE D-KEYWAY & CLAMP BOLT



Series	A(mm)	B(mm)	C(mm)	D(mm)	E(mm)	F(mm)	G(mm)
1.05D20	22	54	93	21	6	12.8	20
1.05D30					8	18.3	30
1.05D32					10	19.3	32
2.05D25	23.8	61.3	102	21	8	15.8	25
2.05D30					10	18.3	30
2.05D32					10	19.3	32
3.05D25	27	70	108	21	8	15.8	25
3.05D32					12	19.3	32
3.05D35					12	20.8	35
4.05D25	27	74.6	108	21	8	15.8	25
4.05D32					10	19.3	32
4.05D38					10	22.3	38
5.05D32	30.2	80	108	21	10	19.3	32
5.05D35					10	20.8	35
6.05D30	30.2	92	118	21	8	18.3	30
6.05D32					10	19.3	32
6.05D38					12	22.3	38
6.05D45					14	26.3	45
6.05D50					14	28.8	50
7.05D30	30.2	106.5	130	25	8	18.3	30
7.05D35					10	20.8	35
7.05D40					12	23.3	40
8.05D30	35	106.5	130	25	8	18.3	30
8.05D35					10	20.8	35
8.05D40					12	23.3	40
8.05D45					14	26.3	45

YOKE

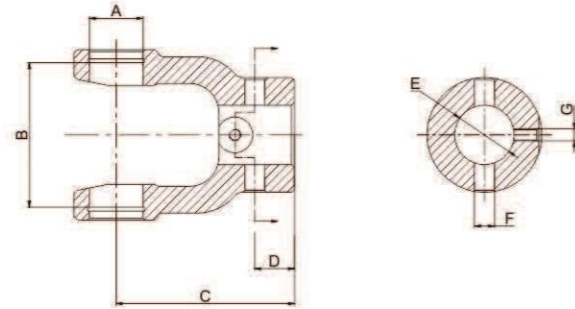
PLAIN BORE YOKE F-VERTICAL PIN HOLE



Series	A(mm)	B(mm)	C(mm)	D(mm)	E(mm)	F(mm)	
1.05F20	22	54	77	15	20	6	
1.05F22					22	8	
1.05F25					25	8	
1.05F30					30	10	
1.05F31.8					18.5	31.8	10
2.05F20	23.8	61.3	82	15	20	6	
2.05F22					22	8	
2.05F25					25	8	
2.05F30					30	10	
3.05F22	27	70	90	20	15	22	8
3.05F25					25	8	
3.05F30					30	10	
3.05F35					35	13	
4.05F22	27	74.6	90	20	22	8	
4.05F25					25	8	
4.05F30					30	10	
4.05F31.8					31.8	10	
4.05F35					35	13	
5.05F30	30.2	80	98	20	30	10	
5.05F35					35	13	
5.05F40					40	13	
6.05F30	30.2	92	104	20	30	10	
6.05F35					35	13	
6.05F40					40	13	
6.05F42					42	13	
7.05F35	30.2	106.5	117	25	35	13	
7.05F40					40	13	
7.05F42					42	13	
7.05F45					45	13	
8.05F35	35	106.5	121	25	35	13	
8.05F40					40	13	
8.05F42					42	13	
8.05F45					45	13	

YOKE

PLAIN BORE YOKE H-PIN HOLE & THREADED HOLE



Series	A(mm)	B(mm)	C(mm)	D(mm)	E(mm)	F(mm)	G(mm)		
1.05H20	22	54	77	15	20	6	M6		
1.05H22					22	8			
1.05H25					25	10			
1.05H30					30	10			
1.05H31.8					31.8	10			
2.05H20	23.8	61.3	82	15	20	6	M6		
2.05H22					22	8			
2.05H25					25	10			
2.05H30					30	10			
3.05H22	27	70	90	15	22	8	M6		
3.05H25				25	10				
3.05H30				30	13				
3.05H35				35	13				
4.05H22	27	74.6	90	20	22	8	M6		
4.05H25					25	10			
4.05H30					30	10			
4.05H31.8					31.8	10			
4.05H35	30.2	80	98	15	35	13	M8		
5.05H30				30	10	M6			
5.05H35				35	13	M8			
5.05H40	30.2	92	104	20	40	13	M10		
6.05H30					30	10	M6		
6.05H35					35	13	M8		
6.05H40					40	13	M10		
6.05H42	30.2	106.5	117	25	42	13	M10		
7.05H35					35			M8	
7.05H40					40			13	M10
7.05H42	42								
7.05H45	35	106.5	121	25	45	13	M10		
8.05H35					35			M8	
8.05H40					40			13	M10
8.05H42					42				
8.05H45	45								

TORQUE LIMITER

Shear Bolt Torque Limiter



SB

Overrunning Clutch



RA



RAS

Ratchet Torque Limiter



SA

Wide Angle Joint



WA



SD



SC

Friction Torque Limiter



FF



FFS



FT

Friction Torque Limiter



FCS