



ALL TRUCK PARTS LIMITED

ATP DRIVESHAFT



Company : ALL TRUCK PARTS LIMITED
Address : BLD#16, Huazhi Science and Technology
Innovation Center, No 28 Sanle E. Rd, Beijiao, Shunde,
Guangdong
Tel : 86-0757-22333572/0757-22333573
E-Mail : sales@alltruckpart.com
Postcode : 528311
Website : www.alltruckpart.com

ATP
DRIVESHAFT

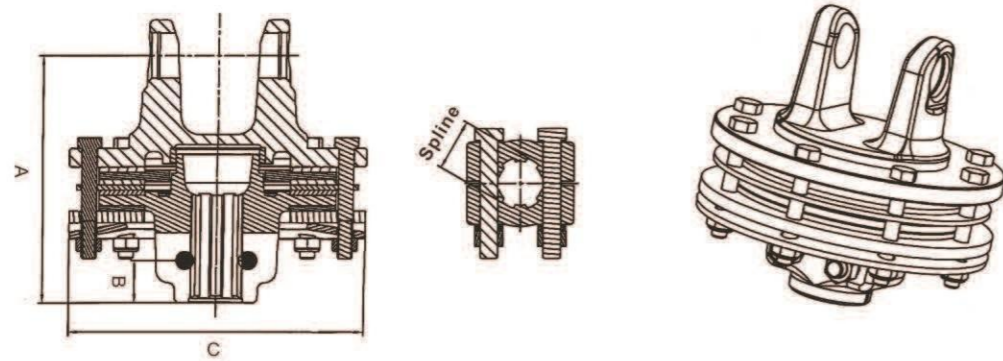
About Us

All Truck Parts Limited has a combined experience of over 20 years in the trucks and trailer industry. ATP has been expanding since our doors opened. We have set up offices in different countries to provide customer support to our local clients in America, Europe, Africa, Australia, and China. We are continuously improving and expanding our offices and factories. As a manufacturer of heavy vehicles on the road, we believe we play a part in road safety. Having said that, we hold high manufacturing quality and standard in all our factories. Supervision and regular inspection are conducted to ensure our license and certificate of ISO/TS16949 is maintain.

We are able to provide a one-stop solution for truck parts for our customers who can seek a variety of truck parts in our company. We have many talented individuals in our team including advanced engineers who are experts in the truck parts field in China. We have a very strong technical support background and quality control for all our products. Customized design and OEM/ODM are the most popular service provided by our factories. We have been providing OEM /ODM services to many large brands for a decade.

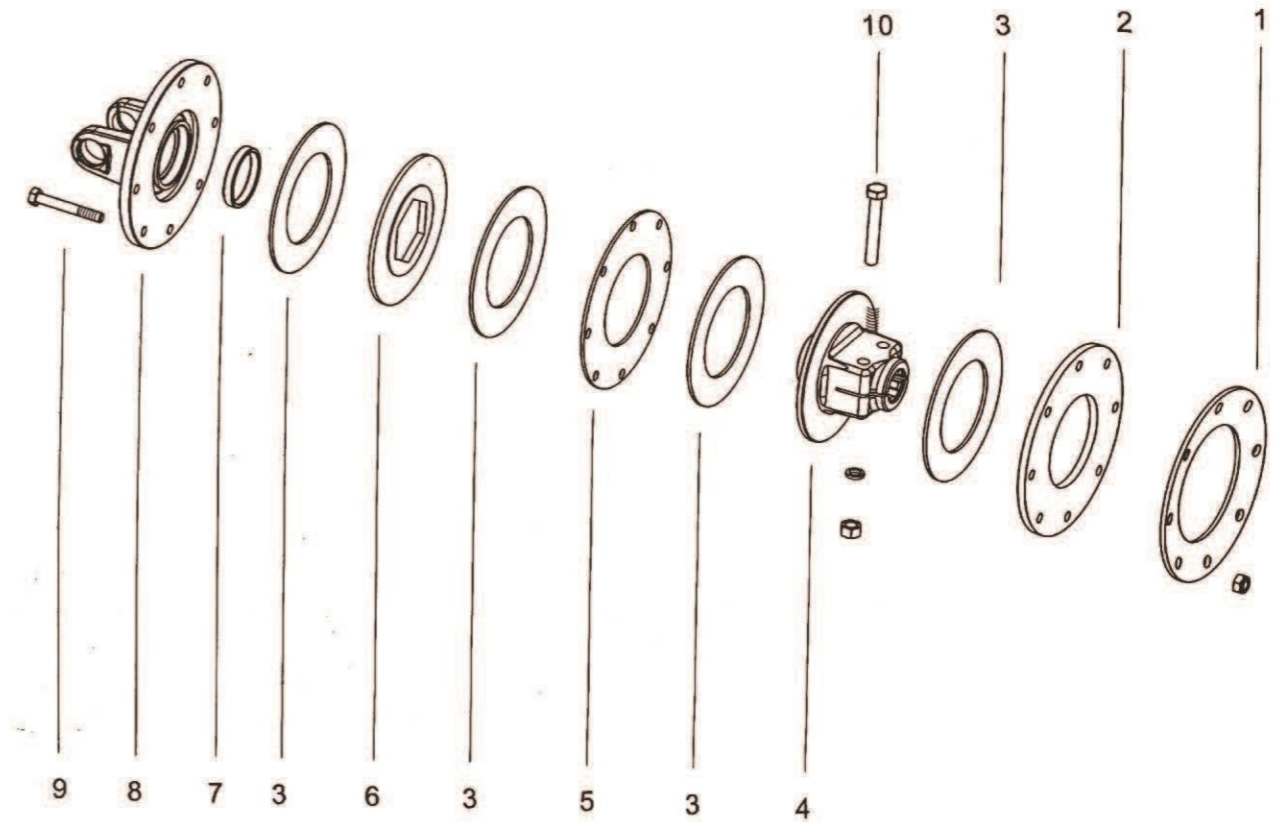
Factory direct prices for our customers is our advantage. Warranty guarantee plus quick delivery and on-time service are our priorities. Welcome customers from all over the world to create a long-term good relationship for business with us!

FRICITION TORQUE LIMITER



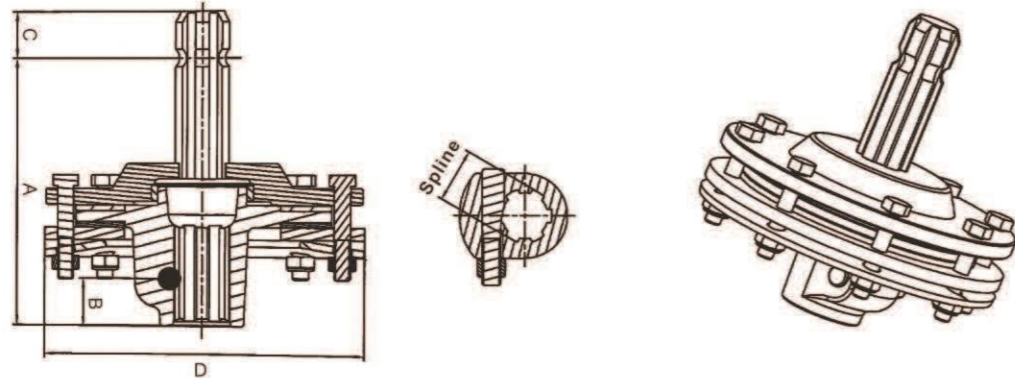
Series	Max Torque(nm)	Friction Disc	Spline	A(mm)	B(mm)	C(mm)
6FFVT4	1600	Φ160	1 3/8"Z6	175	29	Φ200
6FFVT4D			1 3/8"Z21			
6FFVT4C			1 3/4"Z6			
6FFVT4E			1 3/4"Z20			
7FFVT4	2000	Φ160	1 3/8"Z6	182	29	Φ200
7FFVT4D			1 3/8"Z21			
7FFVT4C			1 3/4"Z6			
7FFVT4E			1 3/4"Z20			
7NFFVT4	2000	Φ160	1 3/8"Z6	175	29	Φ200
7NFFVT4D			1 3/8"Z21			
7NFFVT4C			1 3/4"Z6			
7NFFVT4E			1 3/4"Z20			
8FFVT4	2000	Φ160	1 3/8"Z6	182	29	Φ200
8FFVT4D			1 3/8"Z21			
8FFVT4C			1 3/4"Z6			
8FFVT4E			1 3/4"Z20			

FRICITION TORQUE LIMITER

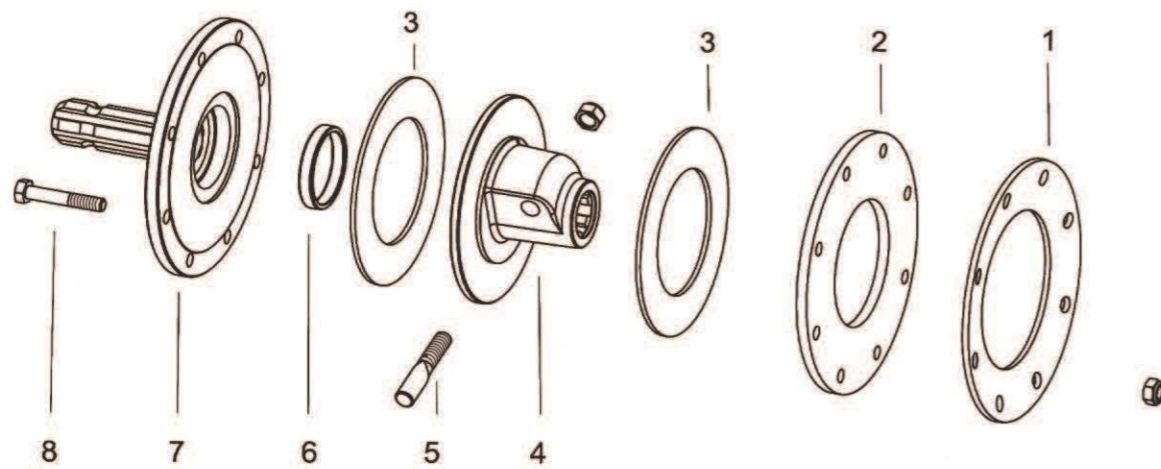


No.	Description	Notes
1	Belleville spring	
2	Pressure plate	
3	Friction discs	Qty.=4
4	Hub	
5	Pressure plate	
6	Hexagon board	
7	Bushing	
8	Flanged yoke	
9	Complete bolt	Qty.=8
10	Complete bolt	Qty.=2

FRICITION TORQUE LIMITER

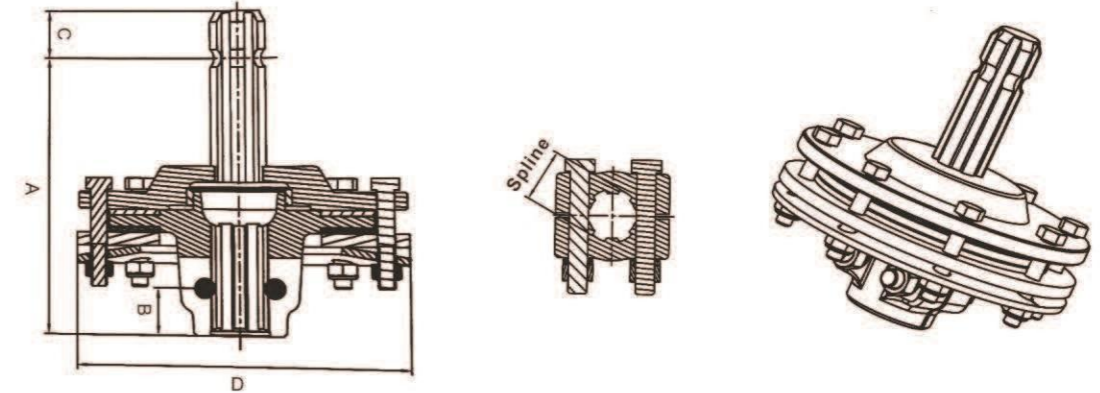


Series	Max Torque(nm)	Friction Disc	Spline(female)	Spline(male)	A(mm)	B(mm)	C(mm)	D(mm)
FFST1	900	Φ140	1 3/8"Z6	1 3/8"Z6	161.5	30.5	38	Φ180
FFST1D			1 3/8"Z21					
FFST2	1200	Φ160	1 3/8"Z6	1 3/8"Z6	161.5	30.5	38	Φ200
FFST2D			1 3/8"Z21					
FFST2C			1 3/4"Z6					
FFST2E			1 3/4"Z20					

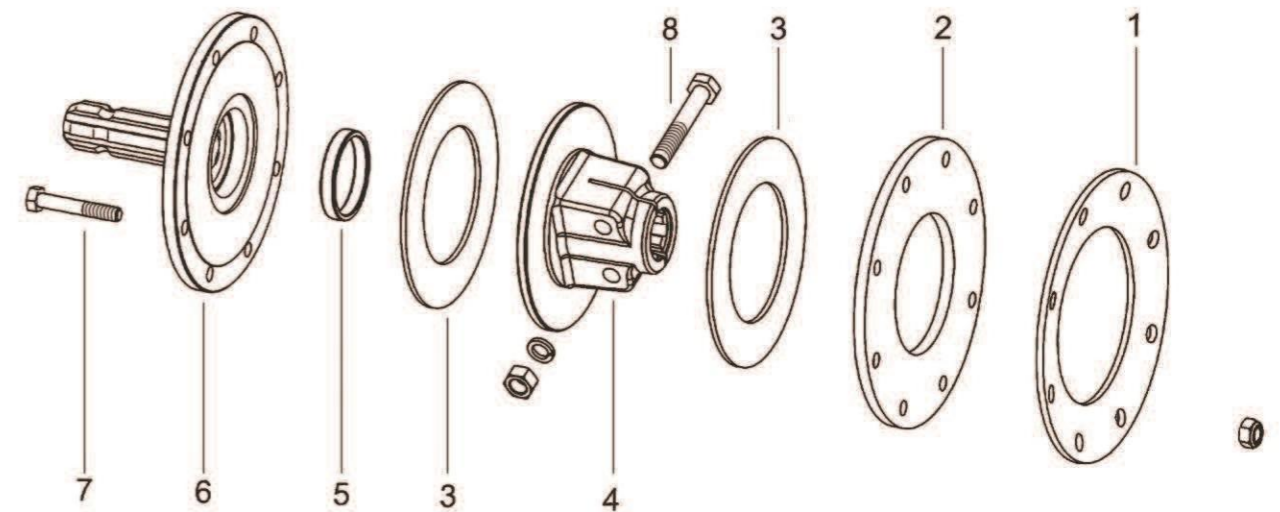


No.	Description	Notes
1	Belleville spring	
2	Pressure plate	
3	Friction discs	Qty.=2
4	Hub	
5	Taper pin sets	With nuts
6	Bushing	
7	Splined shaft welded assembly	
8	Complete bolt	Qty.=8

FRICITION TORQUE LIMITER

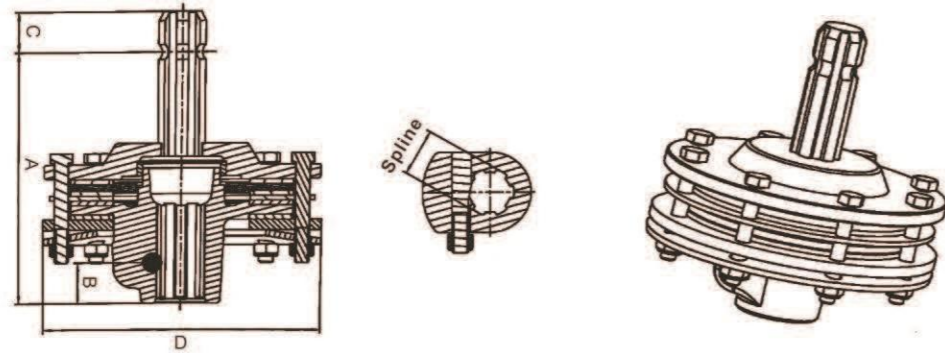


Series	Max Torque(nm)	Friction Disc	Spline(female)	Spline(male)	A(mm)	B(mm)	C(mm)	D(mm)
FFSVT1	900	Φ140	1 3/8"Z6	1 3/8"Z6	161.5	29	38	Φ180
FFSVT2			1 3/8"Z6					
FFSVT2D	1200	Φ160	1 3/8"Z21	1 3/8"Z6	161.5	29	38	Φ200
FFSVT2C			1 3/4"Z6					
FFSVT2E			1 3/4"Z20					

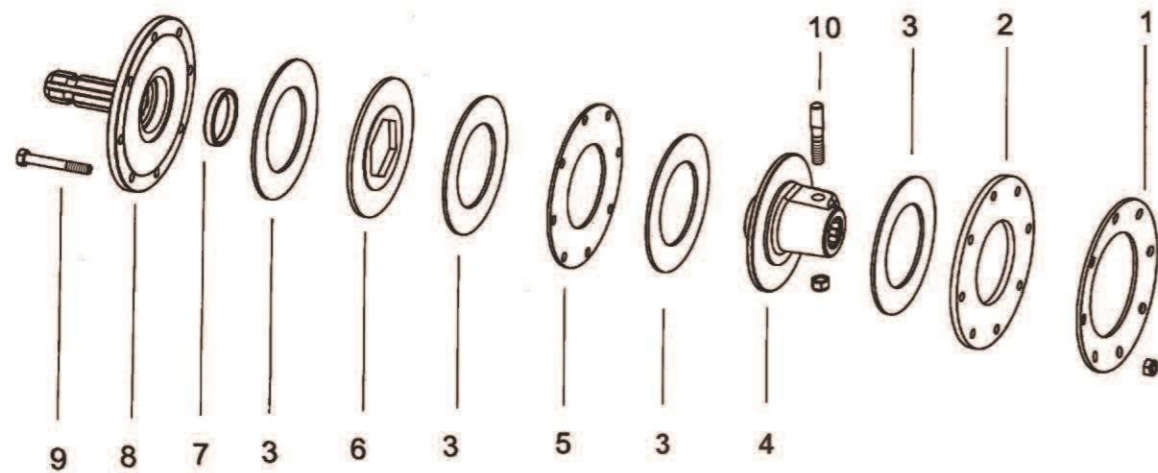


No.	Description	Notes
1	Belleville spring	
2	Pressure plate	
3	Friction discs	Qty.=2
4	Hub	
5	Bushing	With nuts
6	Splined shaft welded assembly	
7	Complete bolt	Qty.=8
8	Complete bolt	Qty.=2

FRICITION TORQUE LIMITER

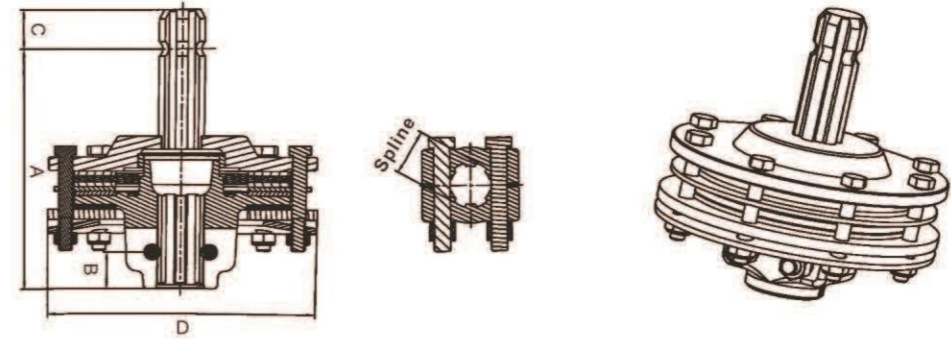


Series	Max Torque(nm)	Friction Disc	Spline(female)	Spline(male)	A(mm)	B(mm)	C(mm)	D(mm)
FFST3	900	Φ140	1 3/8"Z6					Φ180
FFST4			1 3/8"Z6					
FFST4D			1 3/8"Z21					
FFST4C	1200	Φ160	1 3/4"Z6	1 3/8"Z6	161.5	29	38	Φ200
FFST4E			1 3/4"Z20					

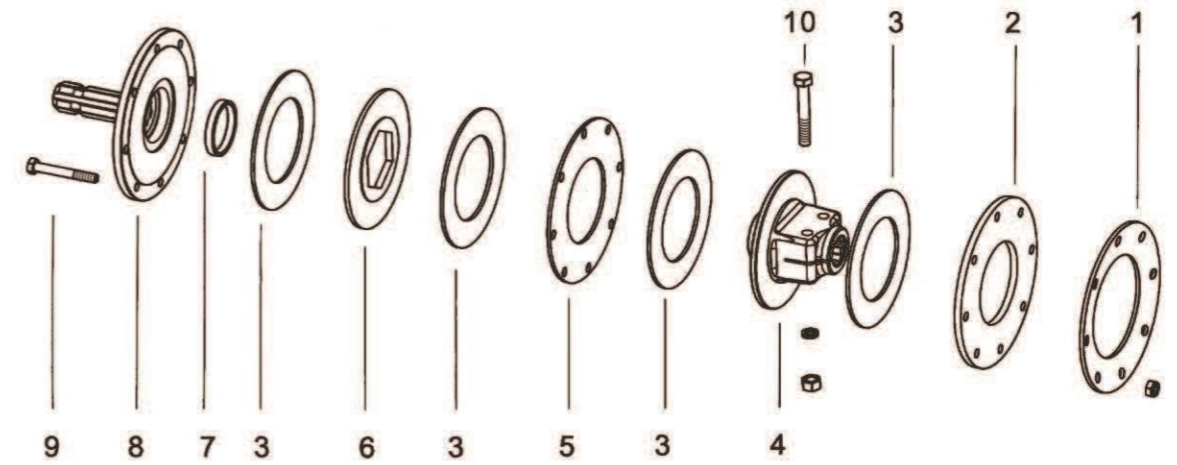


No.	Description	Notes
1	Belleville spring	
2	Pressure plate	
3	Friction discs	Qty.=4
4	Hub	
5	Pressure plate	
6	Hexagon board	
7	Bushing	
8	Splined shaft welded assembly	
9	Complete bolt	Qty.=8
10	Taper pin for hub	With nuts

FRICITION TORQUE LIMITER

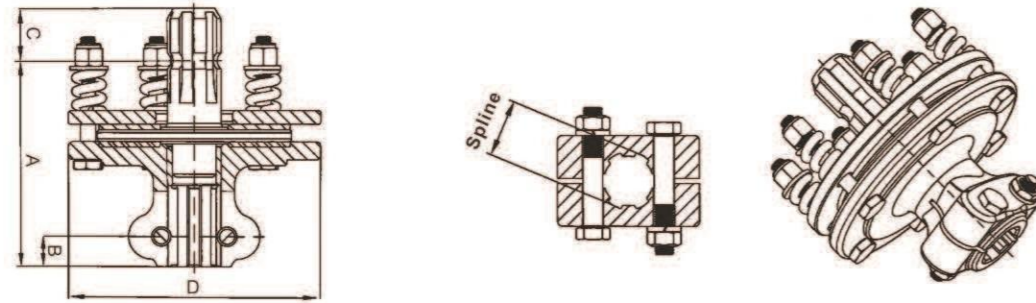


Series	Max Torque(nm)	Friction Disc	Spline(female)	Spline(male)	A(mm)	B(mm)	C(mm)	D(mm)
FFSVT3			1 3/8"Z6					
FFSVT3D	1200	Φ140	1 3/8"Z21	1 3/8"Z6	177	29	38	Φ180
FFSVT4			1 3/8"Z6					
FFSVT4D			1 3/8"Z21					
FFSVT4C	1200	Φ160	1 3/4"Z6	1 3/8"Z6	177	29	38	Φ180
FFSVT4E			1 3/4"Z20					

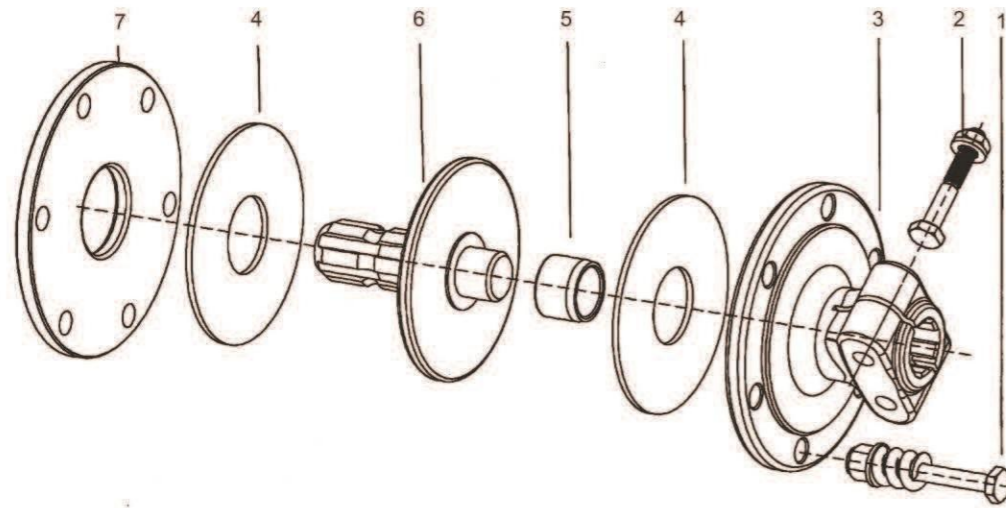


No.	Description	Notes
1	Belleville spring	
2	Pressure plate	
3	Friction discs	Qty.=4
4	Hub	
5	Pressure plate	
6	Hexagon board	
7	Bushing	
8	Splined shaft welded assembly	
9	Complete bolt	Qty.=8
10	Complete bolt	Qty.=2

FRICITION TORQUE LIMITER

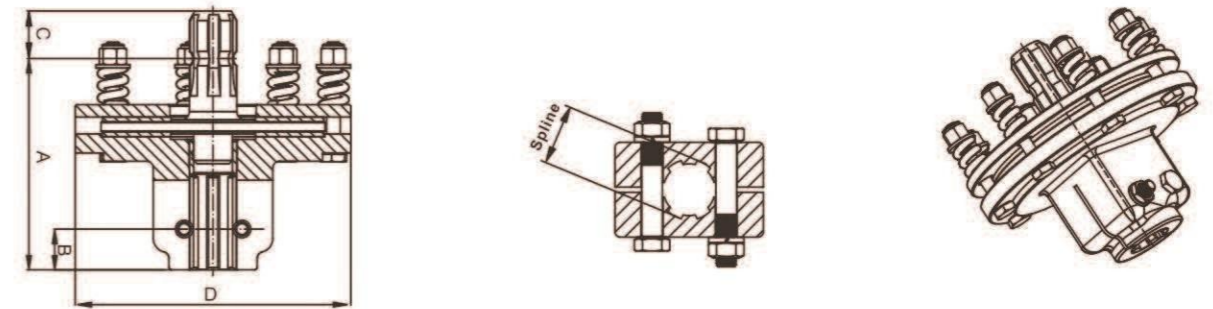


Series	Friction Disc	Disc Qty	Max Torque (nm)	Spline (female)	Spline (male)	A(mm)	B(mm)	C(mm)	D(mm)
FCS165	Φ125	2	800	1 3/8"Z6	1 3/8"Z6	140	20	35	Φ165
FCS165D	Φ125	2	800	1 3/8"Z21	1 3/8"Z6	140	20	35	Φ165

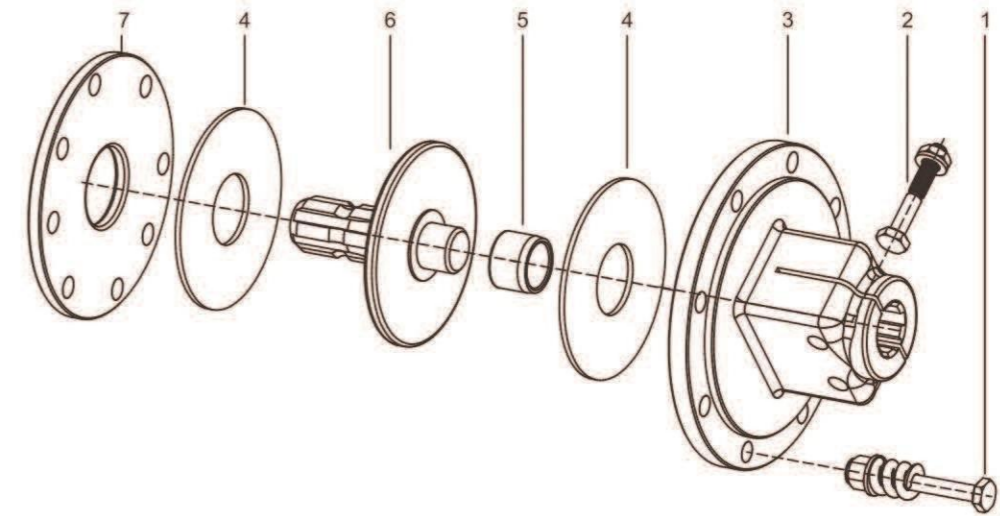


No.	Description	Notes
1	Complete bolt & Spring	Qty.=6
2	Complete bolt	Qty.=2
3	Hub with flange	
4	Friction disc	Qty.=2
5	Plastic bearing	
6	Flanged spline	
7	Pressure plate	

FRICITION TORQUE LIMITER



Series	Friction Disc	Disc Qty	Max Torque (nm)	Spline (female)	Spline (male)	A(mm)	B(mm)	C(mm)	D(mm)
FCS203	Φ163	2	1500	1 3/8"Z6	1 3/8"Z6	155.5	30	35	Φ203
FCS203D	Φ163	2	1500	1 3/8"Z21	1 3/8"Z6	155.5	30	35	Φ203



No.	Description	Notes
1	Complete bolt & Spring	Qty.=8
2	Complete bolt	Qty.=2
3	Hub with flange	
4	Friction disc	Qty.=2
5	Bushing	
6	Flanged spline	
7	Pressure plate	

STANDARD PROFILE FOR AGRICULTURE SPLINES





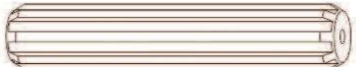



PTO ADAPTOR

Name	Spline(female)	Spline(male)	Drawings
A 1 1/8"-Z6			
B 1 3/8"-Z6			
C 1 3/4"-Z6			
D 1 3/8"-Z21			
E 1 3/4"-Z20			
F 8-42x48x8			
G 8-32x38x6			
N 8-42x36x7			

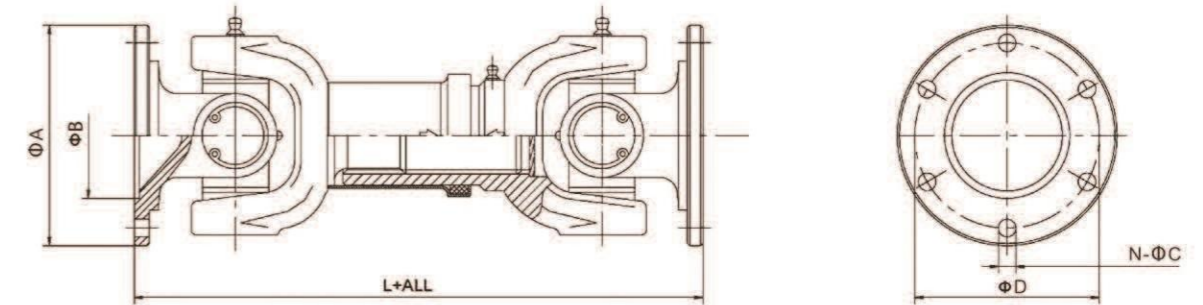
Name	Spline(female)	Spline(male)	Length(mm)	Drawings
00.18.02B*A	1 3/8" Z6	1 1/8" Z6	140	
00.18.02B*B		1 3/8" Z6	160	
00.18.02B*D		1 3/8" Z21	160	
00.18.02B*G		8-32x38x6	160	
00.18.02B*C		1 3/4" Z6	175	
00.18.02B*E	1 3/4" Z20	175		
00.18.02D*B	1 3/8" Z21	1 3/8" Z6	160	
00.18.02D*D		1 3/8" Z21	160	
00.18.02D*G		8-32x38x6	160	
00.18.02D*C		1 3/4" Z6	175	
00.18.02D*E		1 3/4" Z20	175	
00.18.02C*B	1 3/4" Z6	1 3/8" Z6	175	
00.18.02C*D		1 3/8" Z21	175	
00.18.02C*G		8-32x38x6	175	
00.18.02C*C		1 3/4" Z6	175	
00.18.02C*E		1 3/4" Z20	175	
00.18.02E*B	1 3/4" Z20	1 3/8" Z6	175	
00.18.02E*D		1 3/8" Z21	175	
00.18.02E*G		8-32x38x6	175	
00.18.02E*C		1 3/4" Z6	175	
00.18.02E*E		1 3/4" Z20	175	
00.18.02G*B	8-32x38X6	1 3/8" Z6	160	
00.18.02G*D		1 3/8" Z21	160	
00.18.02G*G		8-32x38x6	160	
00.18.02G*C		1 3/4" Z6	175	
00.18.02G*E		1 3/4" Z20	175	
Name	Spline(female)	Spline(male)	Length(mm)	Drawings
00.18.07B*A	1 3/8" Z6	1 1/8" Z6	140	
00.18.07B*B		1 3/8" Z6	160	
00.18.07B*D		1 3/8" Z21	160	
00.18.07B*G		8-32x38x6	160	
00.18.07B*C		1 3/4" Z6	175	
00.18.07B*E	1 3/4" Z20	175		
00.18.07D*B	1 3/8" Z21	1 3/8" Z6	160	
00.18.07D*D		1 3/8" Z21	160	
00.18.07D*G		8-32x38x6	165	
00.18.07D*C		1 3/4" Z6	175	
00.18.07D*E		1 3/4" Z20	175	
00.18.07G*B	8-32x38X6	1 3/8" Z6	160	
00.18.07G*D		1 3/8" Z21	160	
00.18.07G*G		8-32x38x6	165	
00.18.07G*C		1 3/4" Z6	175	
00.18.07G*E		1 3/4" Z20	175	

PTO HUB&SPLINED SHAFT

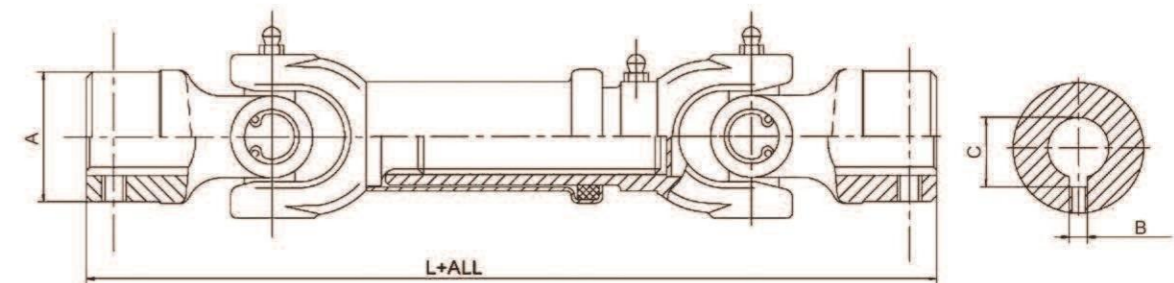
Name	Spline	Length(mm)	Drawings
00.20.A	1 1/8" Z6	60/65/80/100	
00.20.B	1 3/8" Z6	60/65/80/100	
00.20.C	1 3/4" Z6		
00.20.D	1 3/8" Z21	60/65/80/100	
00.20.E	1 3/4" Z20		

Name	Spline	Drawings
00.19.A1	1 1/8" Z6	
00.19.B1	1 3/8" Z6	
00.19.C1	1 3/4" Z6	
00.19.D1	1 3/8" Z21	
00.19.E1	1 3/4" Z20	
00.19.A2	1 1/8" Z6	
00.19.B2	1 3/8" Z6	
00.19.C2	1 3/4" Z6	
00.19.D2	1 3/8" Z21	
00.19.E2	1 3/4" Z20	
00.19.BT		
00.19.BT1	1 3/8" Z6	
00.19.BT2		
00.19.GT		
00.19.GT1	8-32X38X6	
00.19.GT2		

INDUSTRIAL CARDAN SHAFT SERIES



No.	L+ALL	A(mm)	B(mm)	C(mm)	D(mm)	Cross
1	L+ALL	58	30	4-5.00	47	Φ18X47
2		65	35	4-6.00	52	Φ20X50
3		75	42	6-6.00	62	Φ23.8X61.3
4		90	47	4-8.00	74.5	Φ27X74.6
5		100	57	4-8.00	79.4	Φ27X81.8
6		100	57	6-8.00	84	Φ30X81.8
7		120	75	8-10.00	101.5	Φ35X97
8		120	75	8-12.00	130	Φ39.68X115.7
9		150	90	8-12.00	130	Φ42/48X115.7
10		150	90	8-12.00	130	Φ45X123
11		150/165	90	8-14.00	140	Φ52X133
12		180	110	10-16.00	155	Φ57X153

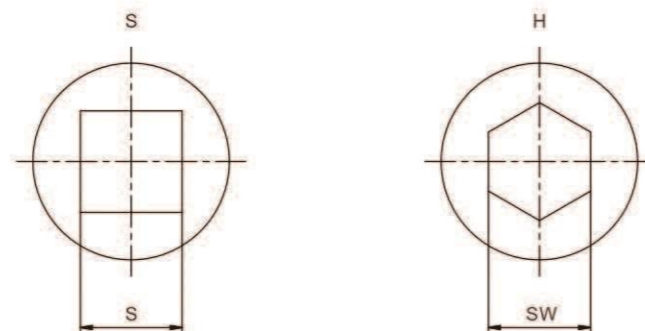
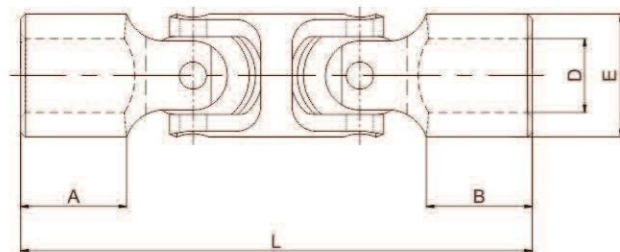
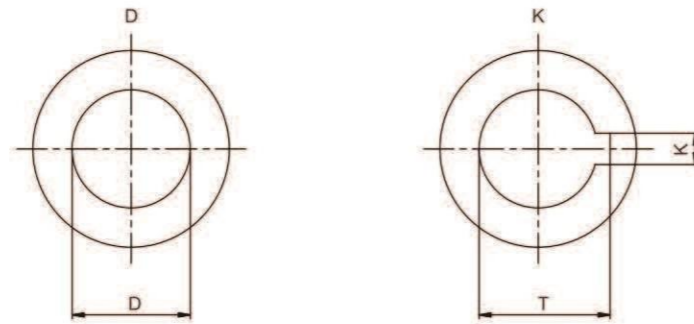


No.	L+ALL	A(mm)	B(mm)	C(mm)	Cross
1	L+ALL	43/44	8	22.8	Φ18x47
2		55/57		33.3	Φ23.8x61.3
3		55/57		38.7	Φ30x81.8

UNIVERSAL COUPLING

PB-D22-12D-79

Series → PB
 Double → D
 Outer Diameter → 22
 Length → 12
 End hub Configuration → D
 Inside Diameter → 79

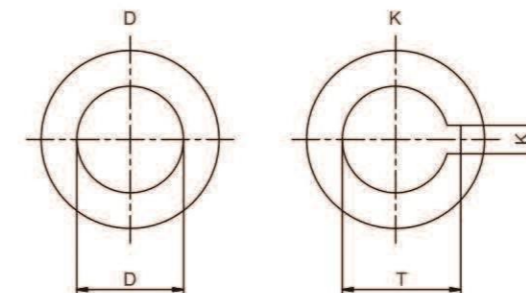
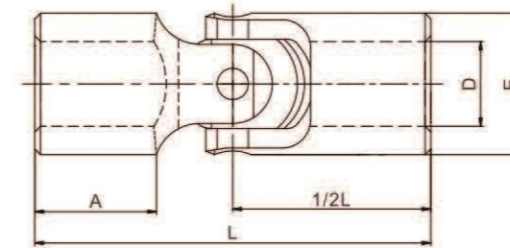


Series	D(h7)	E	L	A	B	K(js9)	T	S(h8)	Sw(h8)
PB-D20	10	20	74	11.5	22.5	3	11.4	10	10
PB-D22	12	22	79	14	25	4	13.8	12	12
PB-D25	14	25	89	15	28	5	16.3	14	14
PB-D29	16	29	100	18	32.5	5	18.3	16	16
PB-D32	18	32	111	19	36	6	20.8	18	18
PB-D35	20	35	120	21.5	39	6	22.8	20	20
PB-D37	20	37	128	21	41	6	22.8	20	20
PB-D40	22	40	145	25.5	47.5	6	24.8	22	22
PB-D45	25	45	163	31	54	8	28.3	25	25
PB-D50	30	50	185	35	61	8	33.3	30	30
PB-D60	35	60	232	49	80	10	38.3	35	35
PB-D70	40	70	225	33.5	70	12	43.3		
PB-D80	45	80	260	38	80	14	48.8		
PB-D95	50	95	310	45	95	14	53.8		

UNIVERSAL COUPLING

PB-S16-8D-40

Series → PB
 Single → S
 Outer Diameter → 16
 Length → 8
 End hub Configuration → D
 Inside Diameter → 40



Series	D(h7)	E	L	A	B	K(js9)	T	S(h8)	Sw(h8)
PB-S13	6	13	40	13	20				
PB-S16	8	16	40	11	20	2	9	8	8
PB-S20	10	20	45	11.5	22.5	3	11.4	10	10
PB-S22	12	22	50	14	25	4	13.8	12	12
PB-S25	14	25	56	15	28	5	16.3	14	14
PB-S29	16	29	65	18	32.5	5	18.3	16	16
PB-S32	18	32	72	19	36	6	20.8	18	18
PB-S35	20	35	78	21.5	39	6	22.8	20	20
PB-S37	20	37	82	21	41	6	22.8	20	20
PB-S40	22	40	95	25.5	47.5	6	24.8	22	22
PB-S45	25	45	108	31	54	8	28.3	25	25
PB-S50	30	50	122	35	61	8	33.3	30	30
PB-S60	35	60	160	49	80	10	38.3	35	35
PB-S70	40	70	140	33.5	70	12	43.3		
PB-S80	45	80	160	38	80	14	48.8		
PB-S95	50	95	190	45	95	14	53.8		