



ALL TRUCK PARTS LIMITED

ATP DRIVESHAFT



Company : ALL TRUCK PARTS LIMITED
Address : BLD#16, Huazhi Science and Technology
Innovation Center, No 28 Sanle E. Rd, Beijiao, Shunde,
Guangdong
Tel : 86-0757-22333572/0757-22333573
E-Mail : sales@alltruckpart.com
Postcode : 528311
Website : www.alltruckpart.com

ATP DRIVESHAFT

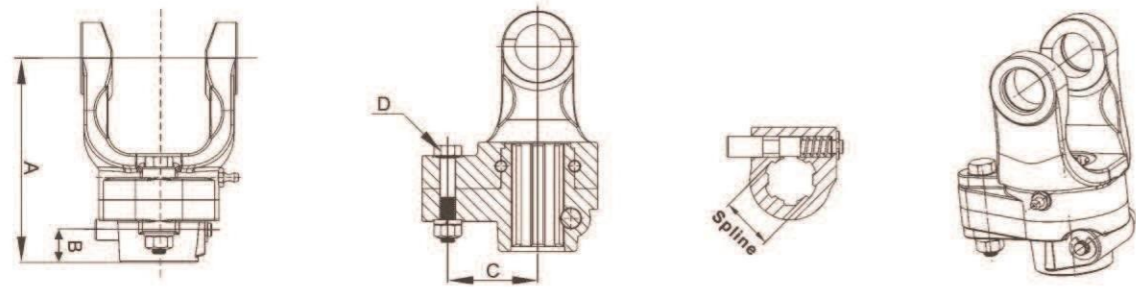
About Us

All Truck Parts Limited has a combined experience of over 20 years in the trucks and trailer industry. ATP has been expanding since our doors opened. We have set up offices in different countries to provide customer support to our local clients in America, Europe, Africa, Australia, and China. We are continuously improving and expanding our offices and factories. As a manufacturer of heavy vehicles on the road, we believe we play a part in road safety. Having said that, we hold high manufacturing quality and standard in all our factories. Supervision and regular inspection are conducted to ensure our license and certificate of ISO/TS16949 is maintain.

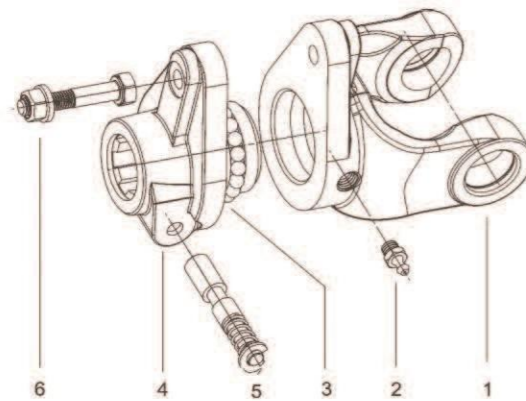
We are able to provide a one-stop solution for truck parts for our customers who can seek a variety of truck parts in our company. We have many talented individuals in our team including advanced engineers who are experts in the truck parts field in China. We have a very strong technical support background and quality control for all our products. Customized design and OEM/ODM are the most popular service provided by our factories. We have been providing OEM /ODM services to many large brands for a decade.

Factory direct prices for our customers is our advantage. Warranty guarantee plus quick delivery and on-time service are our priorities. Welcome customers from all over the world to create a long-term good relationship for business with us!

SHEAR BOLT TORQUE LIMITER

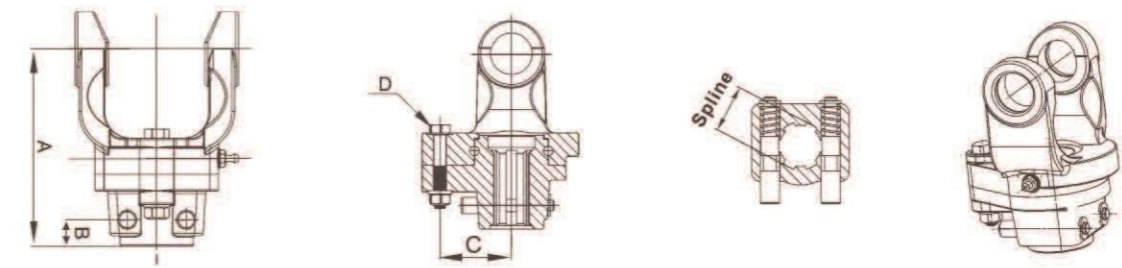


Series	Torque(nm)	Spline	A(mm)	B(mm)	C(mm)	D(mm)	
1SB	570	1 3/8"Z6	95	20	35	M6×40	
1SBT1	740				45		
2SB	740		98		20	45	M6×40
2SBT1	790					48	
3SB	1110		102	21	38	M8×45	
3SBT1	1200				40		
4SB	1400		107	21	48	M8×50	
4SBT1	1600				55		
5SB	1600		114	21	55	M8×45	
5SBT1	2100				46		
6SB	1750		137	21	60	M8×55	
6SBT1	2500				55		
32SB	1600		114	21	55	M8×45	
32SBT1	2100				46		
7SB	2050	152	24	45	M10×60		
7SBT1	3200			49			

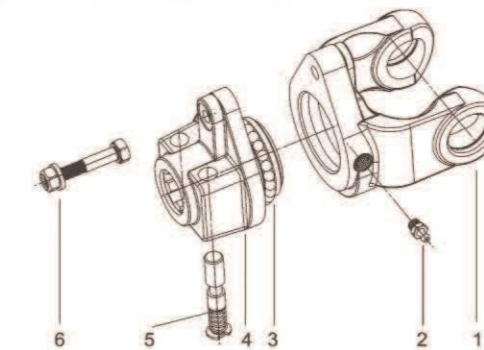


No.	Description	Notes
1	Yoke	
2	Grease nipple	
3	Steel ball	
4	Hub	
5	Push pin	
6	Shear bolt & Nut	

SHEAR BOLT TORQUE LIMITER

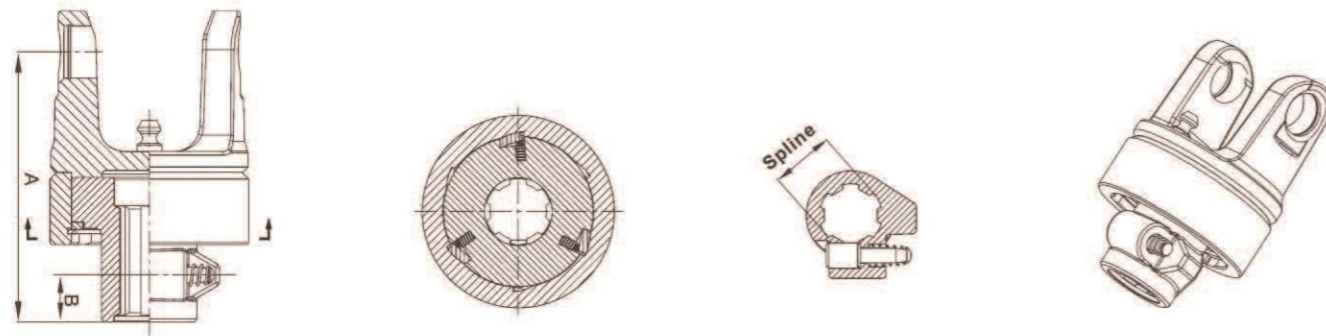


Series	Torque(nm)	Spline	A(mm)	B(mm)	C(mm)	D(mm)
7NSB	2300	1 3/8"Z6	139	24	50	M10×65
7NSBT1	3000				46	M12×65
8SB	2700	1 3/8"Z6	152		60	M10×65
8SBT1	3500				57	M12×65
8SB.C	2700	1 3/4"Z6	152		60	M10×65
8SBT1.C	3500				57	M12×65
38SB	2700	1 3/8"Z6	152		60	M10×65
9SB	3500	1 3/8"Z6	152		57	M12×65
9SBT1	4000	1 3/8"Z6	152		60	M12×65
9SB.C	3500	1 3/4"Z6	152		57	M12×65
9SBT1.C	4000	1 3/4"Z6	152		60	M12×65
10SB	3500	1 3/8"Z6	152		57	M12×65
10SBT1	4500	1 3/8"Z6	152		49	M14×70
10SB.C	3500	1 3/4"Z6	152		57	M12×65
10SBT1.C	4500	1 3/4"Z6	152	49	M14×70	
36SB	2400	1 3/8"Z6	137	53	M10×65	
36SBT1	3200	1 3/8"Z6	137	49	M12×65	
42SB	3500	1 3/8"Z6	152	57	M12×65	
42SBT1	4000	1 3/8"Z6	152	60	M12×65	
42SB.C	3500	1 3/4"Z6	152	57	M12×65	
42SBT1.C	4000	1 3/4"Z6	152	60	M12×65	

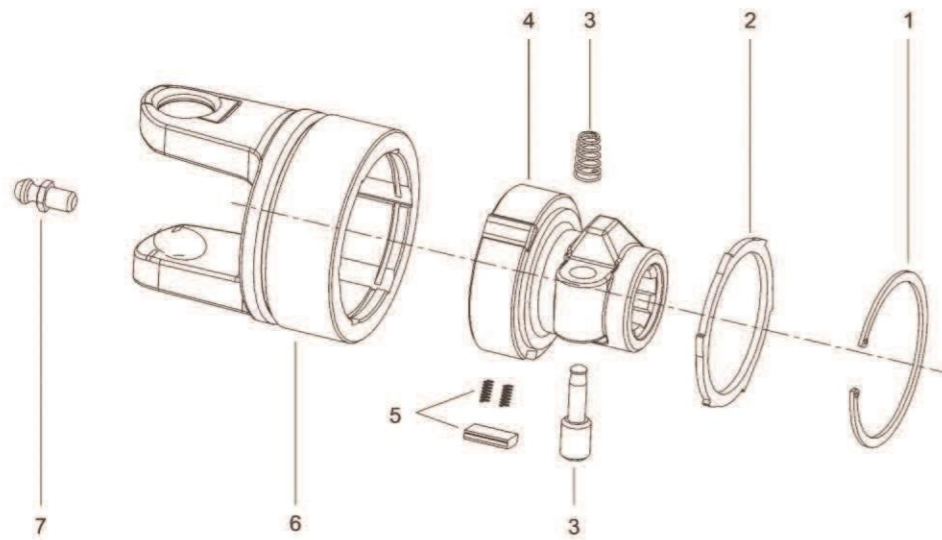


No.	Description	Notes
1	Yoke	
2	Grease nipple	
3	Steel ball	
4	Hub	
5	Push pin	Qty.=2
6	Shear bolt & Nut	

OVERRUNNING CLUTCH

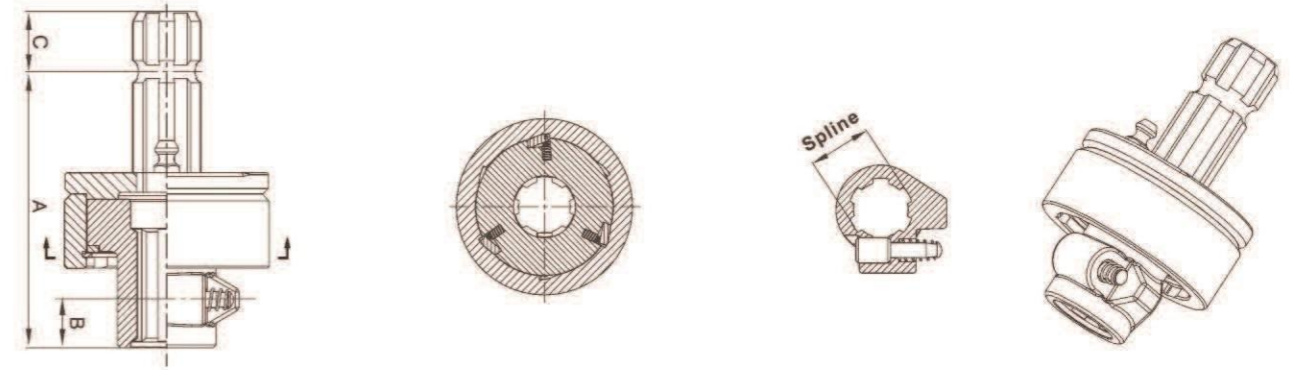


Series	Max Torque(nm)	Spline	A(mm)	B(mm)
1RA1	2400	1 3/8"Z6	138	21
2RA1			138	
3RA1			149	
4RA1			150	
5RA1			154	
6RA1			160	
7RA1			171	
8RA1			171	

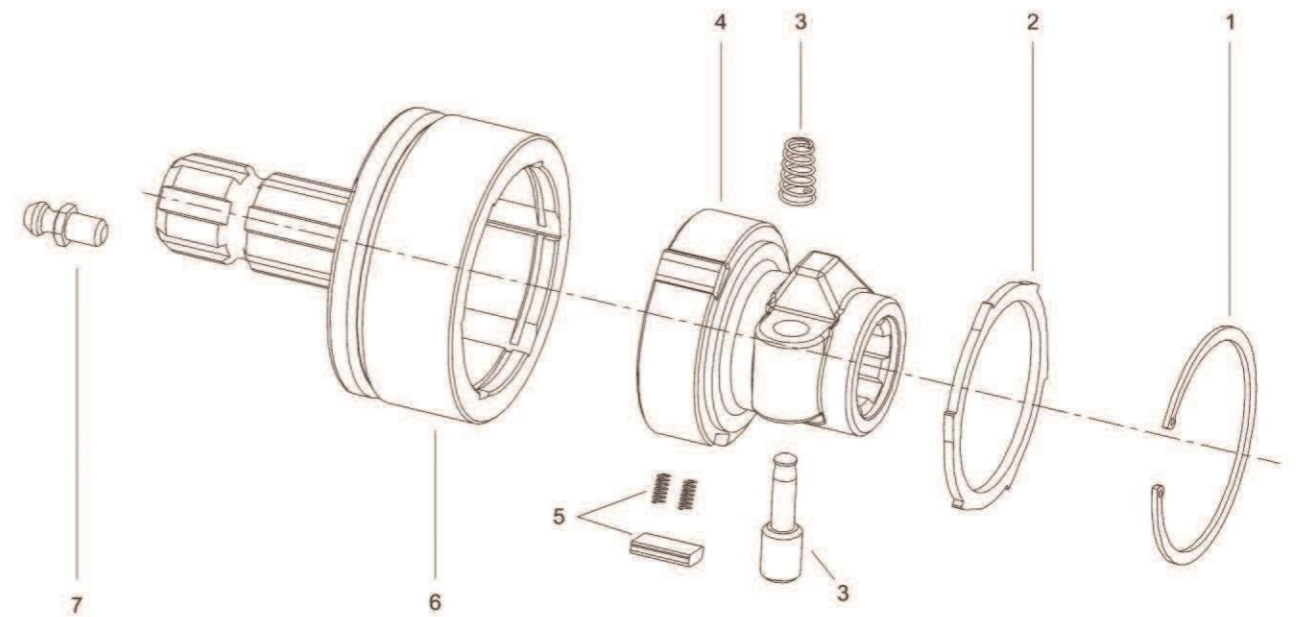


No.	Description	Notes
1	Circlip	
2	Retaining washer	
3	Push pin kit	
4	Hub	
5	Prong kit	Qty.=3
6	Housing with yoke	
7	Grease nipple	

OVERRUNNING CLUTCH

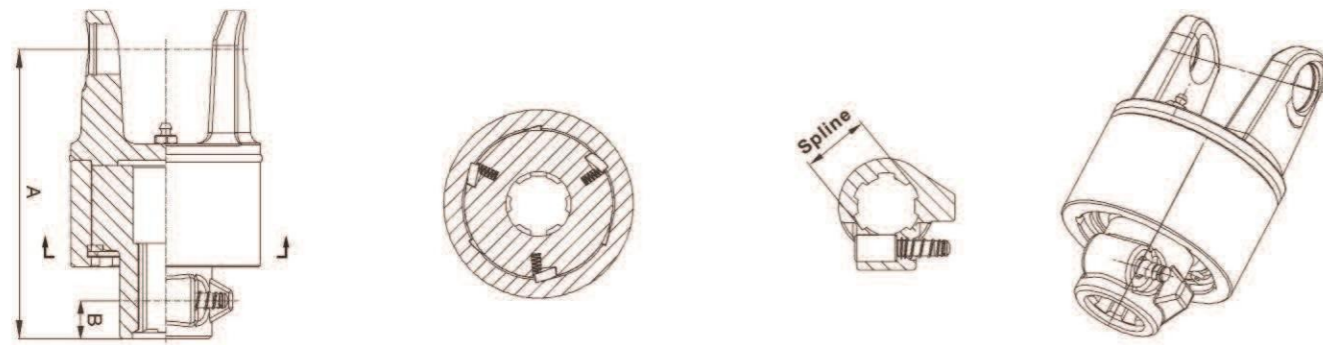


Series	Max Torque(nm)	Spline(female)	Spline(male)	A(mm)	B(mm)	C(mm)
RAS1	2400	1 3/8"Z6	1 3/8"Z6	142	21	38

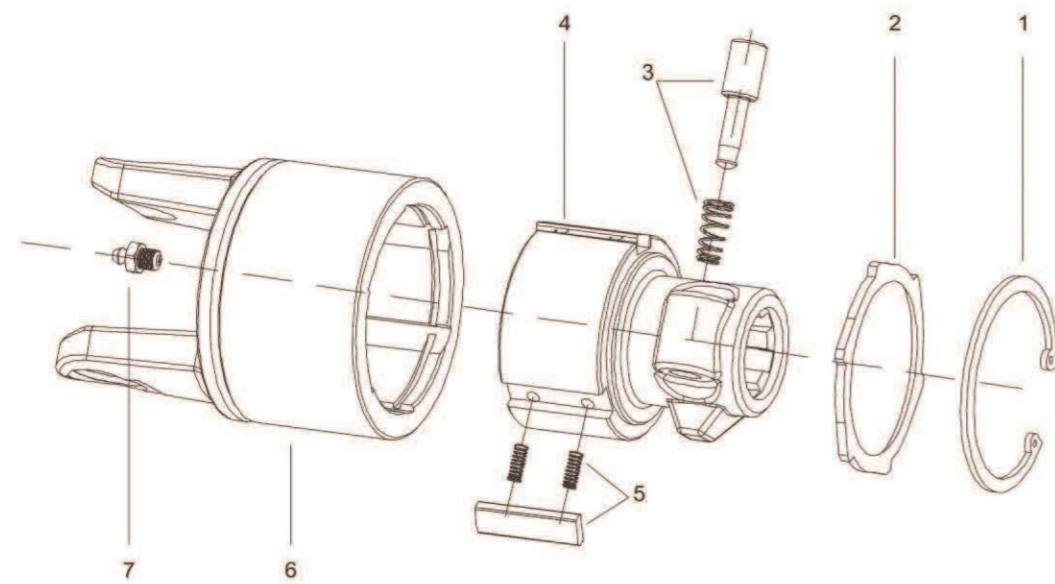


No.	Description	Notes
1	Circlip	
2	Retaining washer	
3	Push pin kit	
4	Hub	
5	Prong kit	Qty.=3
6	Housing with splined shaft	
7	Grease nipple	

OVERRUNNING CLUTCH

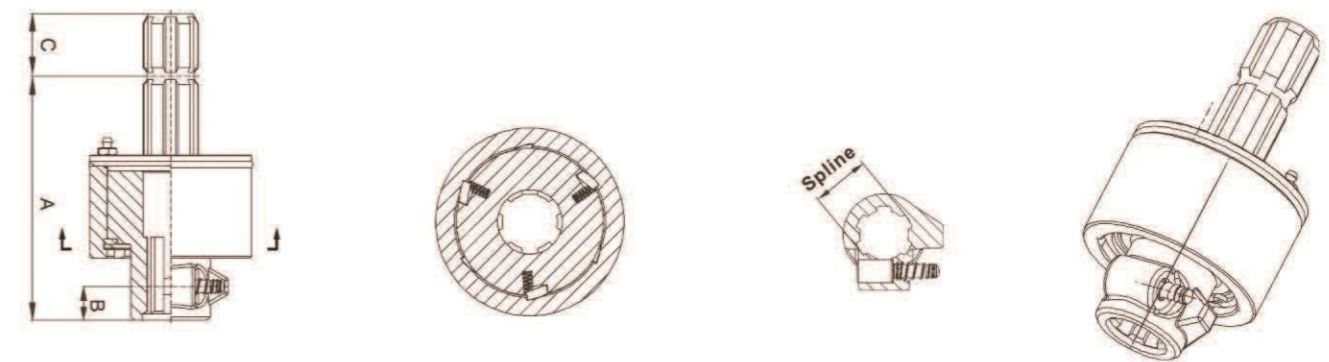


Series	Max Torque(nm)	Spline	A(mm)	B(mm)
5RA2	3500	1 3/8"Z6	172	21
6RA2			178	
7NRA2			175	
6RA2			178	
8RA2			189	

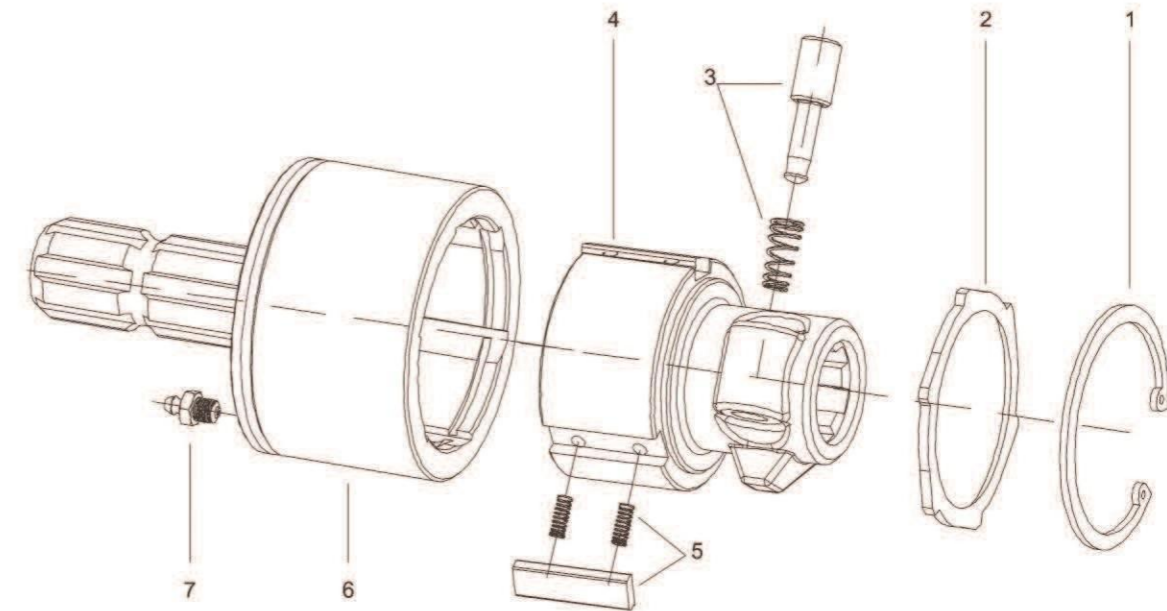


No.	Description	Notes
1	Circlip	
2	Retaining washer	
3	Push pin kit	
4	Hub	
5	Prong kit	Qty.=3
6	Housing with yoke	
7	Grease nipple	

OVERRUNNING CLUTCH

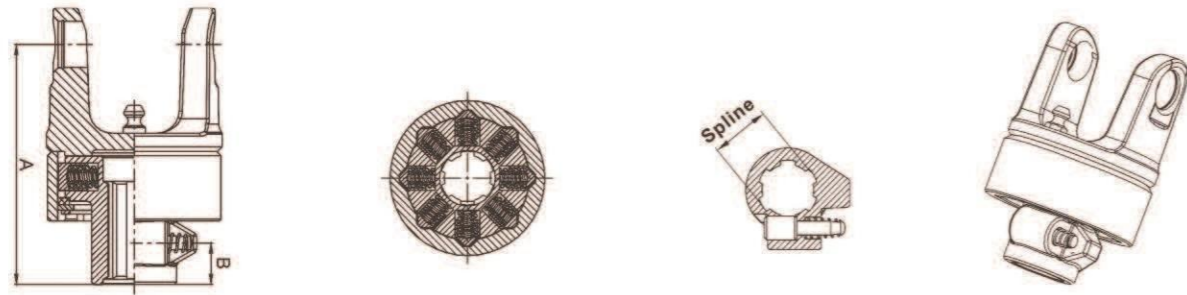


Series	Max Torque(nm)	Spline(female)	Spline(male)	A(mm)	B(mm)	C(mm)
RAS2	3500	1 3/8"Z6	1 3/8"Z6	161	21	38



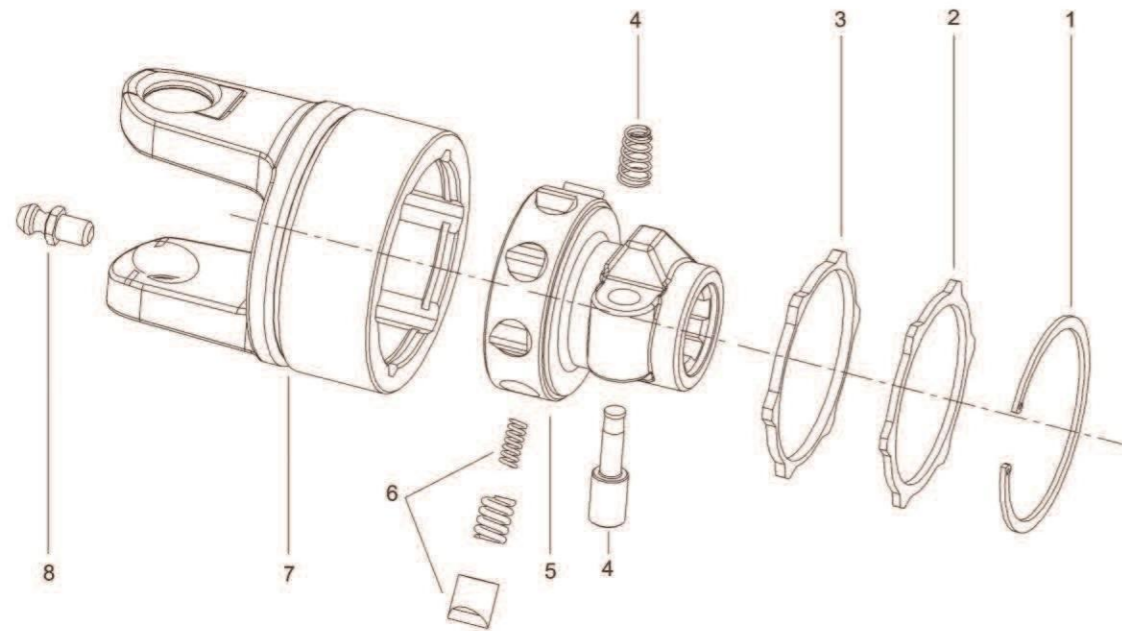
No.	Description	Notes
1	Circlip	
2	Retaining washer	
3	Push pin kit	
4	Hub	
5	Prong kit	Qty.=3
6	Housing with splined shaft	
7	Grease nipple	

RATCHET TORQUE LIMITER



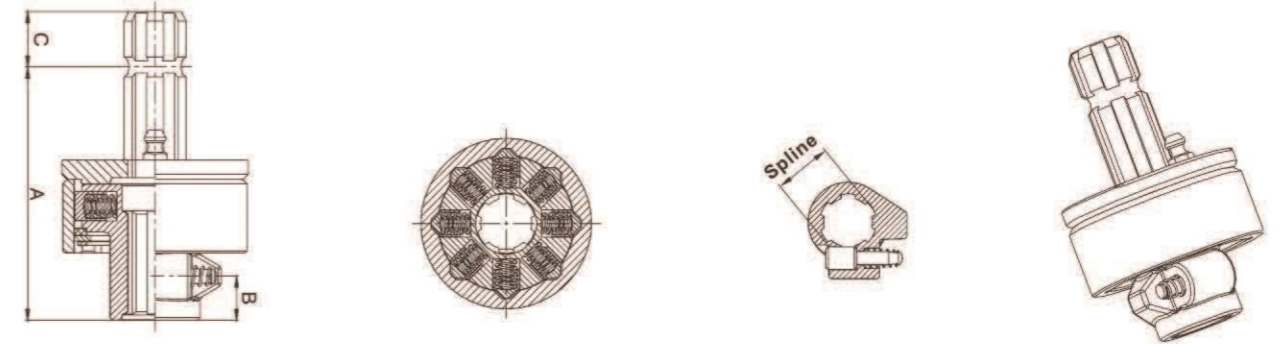
Series	Setting Torque (nm)	Spline	A(mm)	B(mm)
1SA1	400	1 3/8"Z6	138	21
2SA1			138	
3SA1			149	
4SA1			150	

RATCHET TORQUE LIMITER

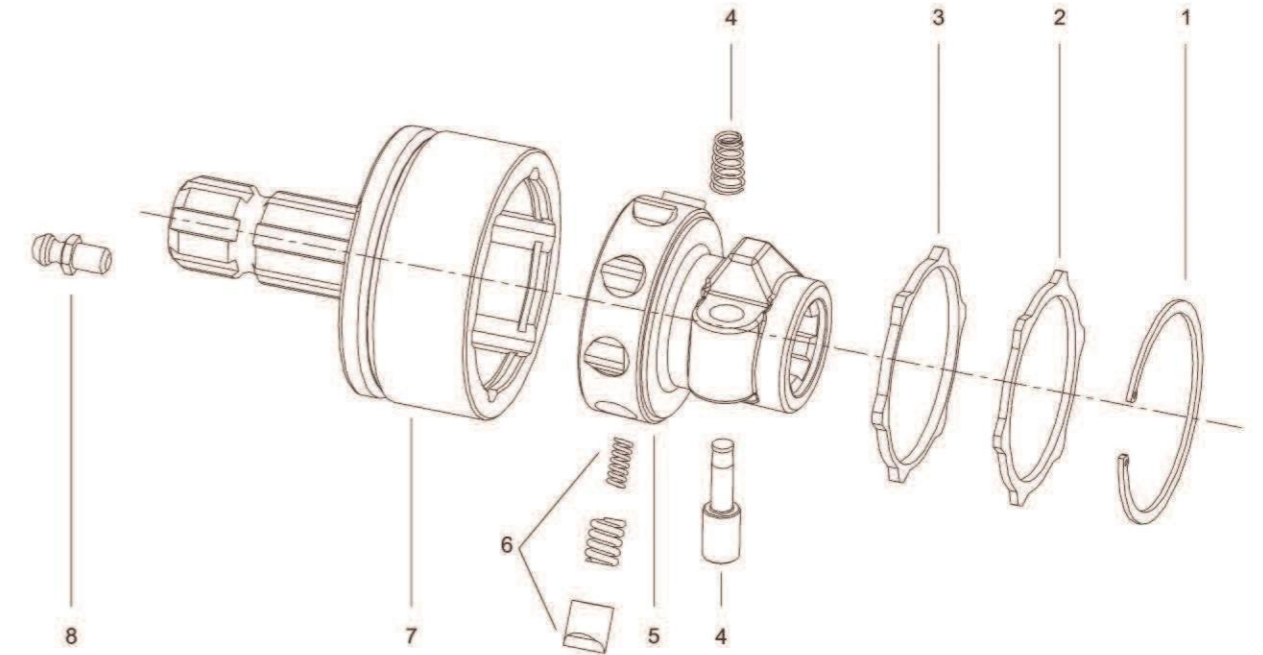


No.	Description	Notes
1	Circlip	
2	Retaining washer	
3	Dust guard ring	
4	Push pin kit	
5	Hub	
6	Pawl kit	Qty.=8
7	Housing with yoke	
8	Grease nipple	

RATCHET TORQUE LIMITER

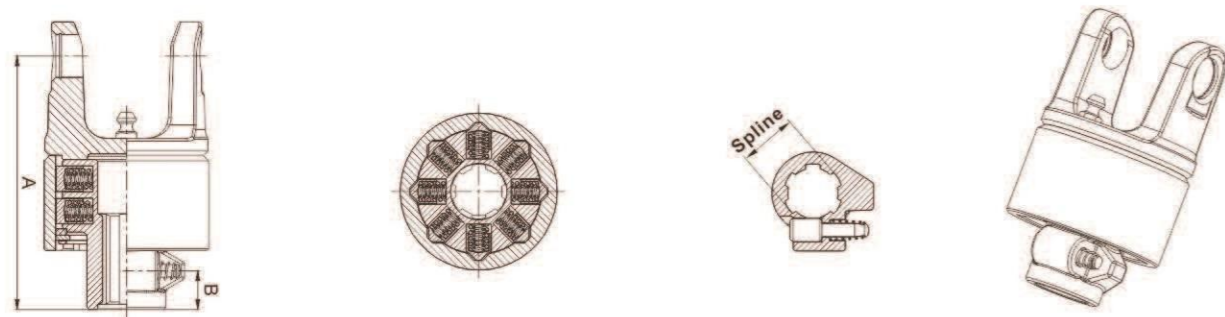


Series	Setting Torque(nm)	Spline(female)	Spline(male)	A(mm)	B(mm)	C(mm)
SAS1	400	1 3/8"Z6	1 3/8"Z6	144	21	38

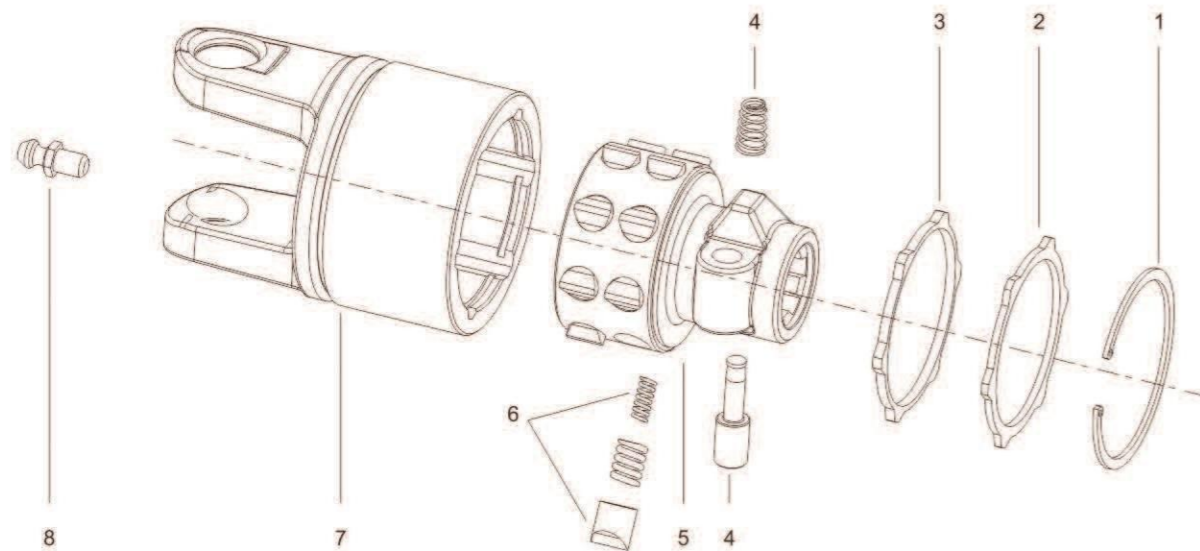


No.	Description	Notes
1	Circlip	
2	Retaining washer	
3	Dust guard ring	
4	Push pin kit	
5	Hub	
6	Pawl kit	Qty.=8
7	Housing with yoke	
8	Grease nipple	

RATCHET TORQUE LIMITER

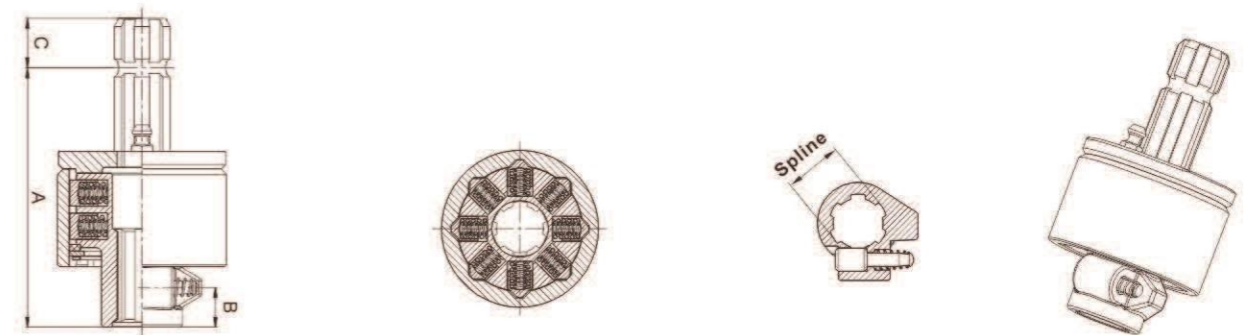


Series	Setting Torque (nm)	Spline	A(mm)	B(mm)
1SA2	800	1 3/8"Z6	156	21
2SA2			156	
3SA2			167	
4SA2			168	
5SA2			172	
6SA2			178	
7SA2			189	
8SA2			189	

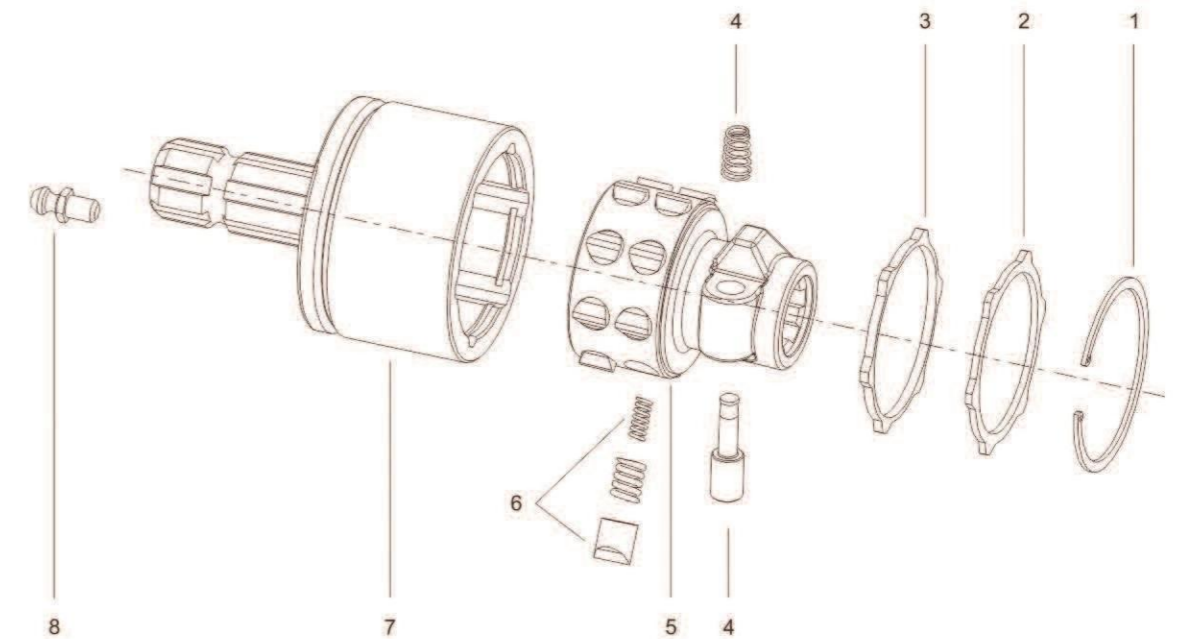


No.	Description	Notes
1	Circlip	
2	Retaining washer	
3	Dust guard ring	
4	Push pin kit	
5	Hub	
6	Pawl kit	Qty.=16
7	Housing with yoke	
8	Grease nipple	

RATCHET TORQUE LIMITER

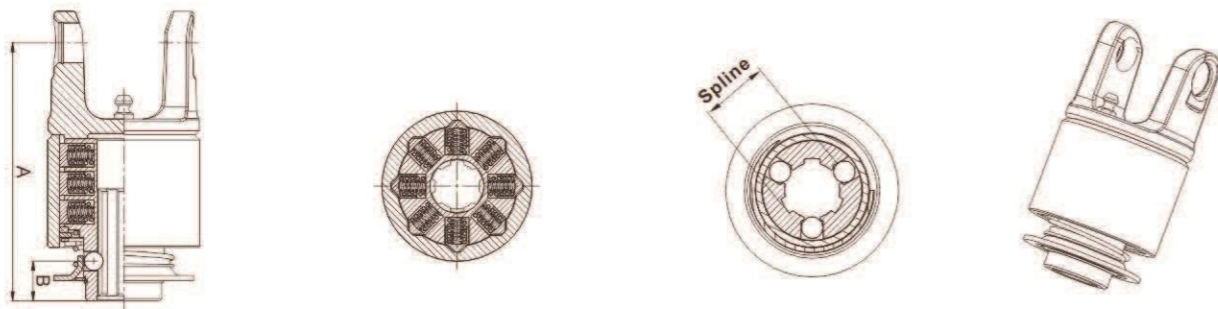


Series	Setting Torque(nm)	Spline(female)	Spline(male)	A(mm)	B(mm)	C(mm)
SAS2	800	1 3/8"Z6	1 3/8"Z6	161	21	38

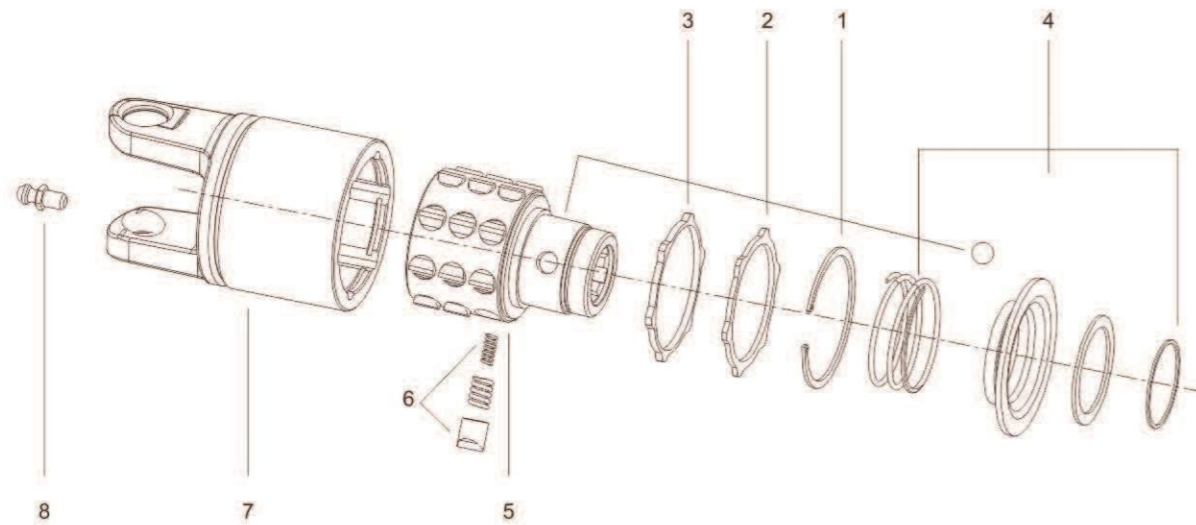


No.	Description	Notes
1	Circlip	
2	Retaining washer	
3	Dust guard ring	
4	Push pin kit	
5	Hub	
6	Pawl kit	Qty.=16
7	Housing with yoke	
8	Grease nipple	

RATCHET TORQUE LIMITER

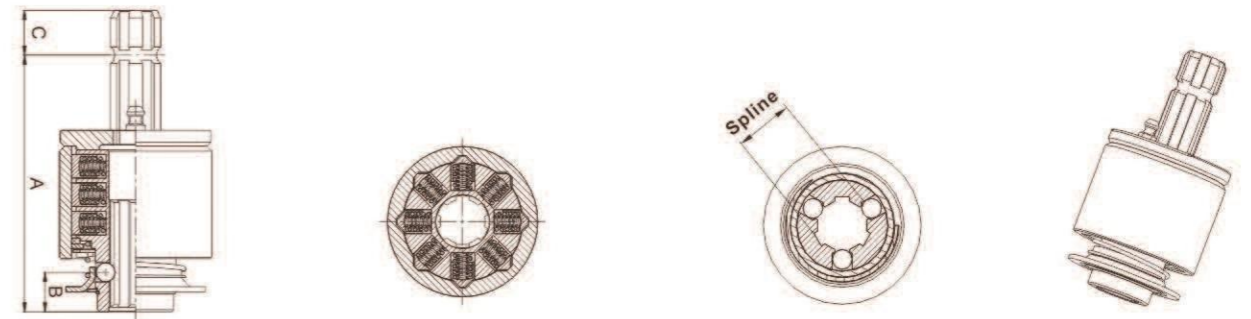


Series	Setting Torque (nm)	Spline	A(mm)	B(mm)
2SA3	1200	1 3/8"Z6	171	22
3SA3			182	
4SA3			183	
5SA3			187	
6SA3			193	
7SA3			204	
7NSA3			190	
8SA3			204	

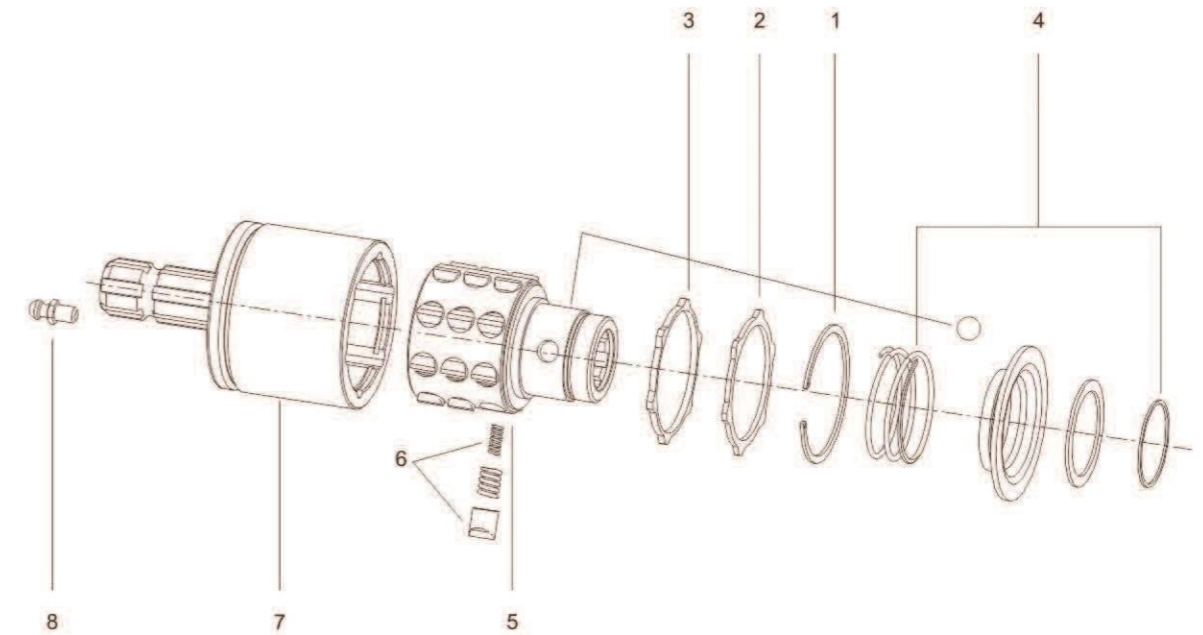


No.	Description	Notes
1	Circlip	
2	Retaining washer	
3	Dust guard ring	
4	Push pin kit	
5	Hub	
6	Pawl kit	Qty.=24
7	Housing with yoke	
8	Grease nipple	

RATCHET TORQUE LIMITER

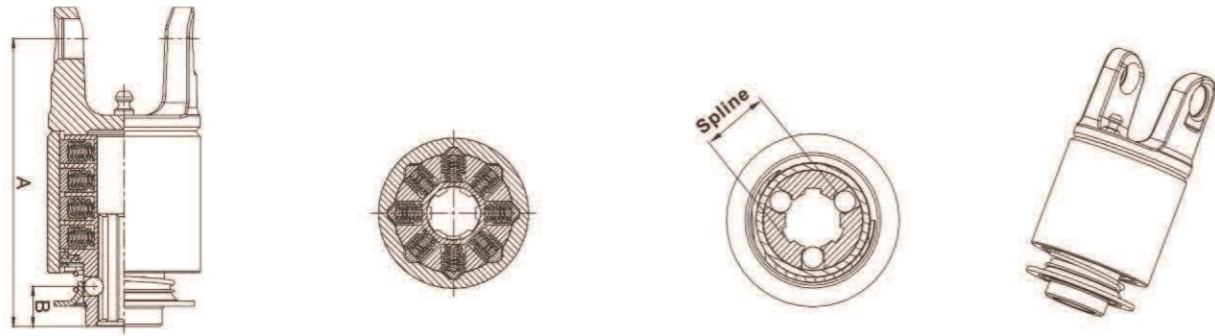


Series	Setting Torque(nm)	Spline(female)	Spline(male)	A(mm)	B(mm)	C(mm)
SAS3	1200	1 3/8"Z6	1 3/8"Z6	164.5	22	38

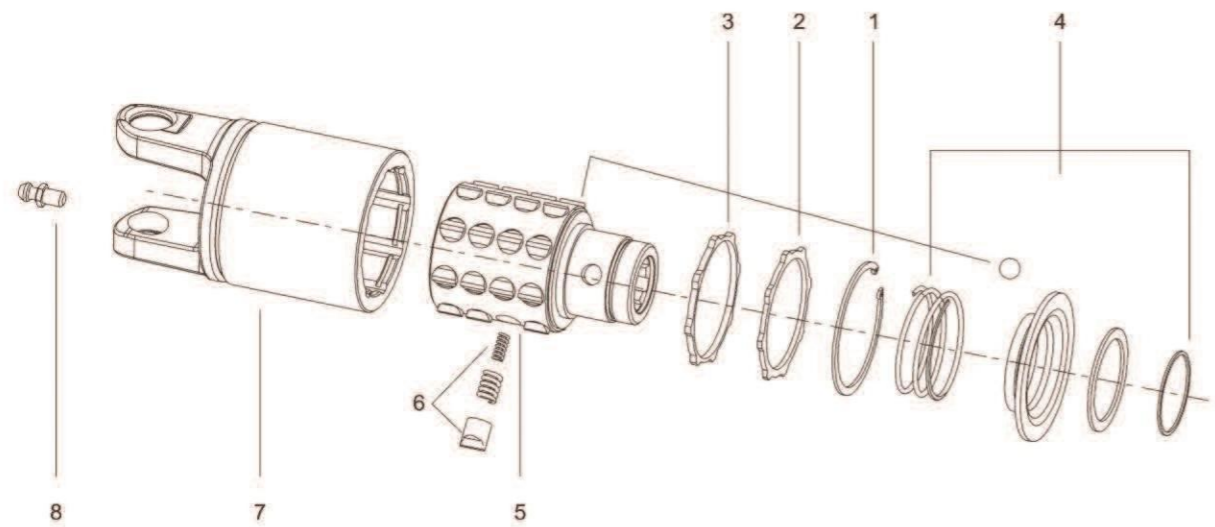


No.	Description	Notes
1	Circlip	
2	Retaining washer	
3	Dust guard ring	
4	Ball collar kit	
5	Hub	
6	Pawl kit	Qty.=24
7	Housing with yoke	
8	Grease nipple	

RATCHET TORQUE LIMITER

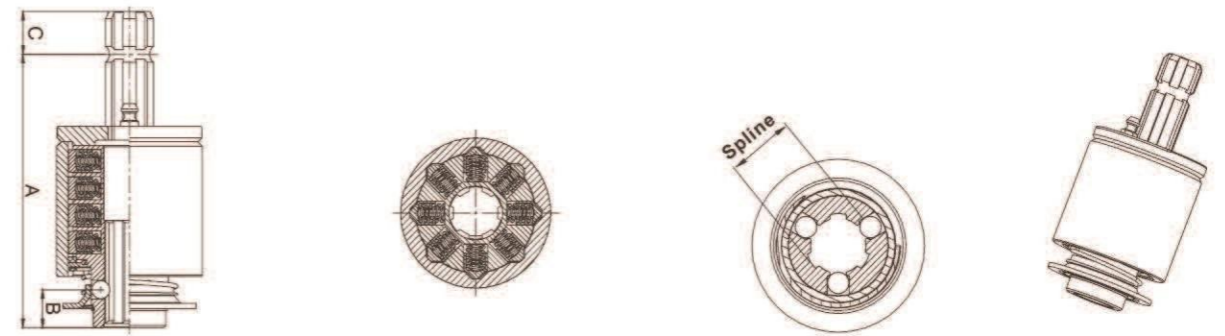


Series	Setting Torque (nm)	Spline	A(mm)	B(mm)
5SA4	1600	1 3/8"Z6	206	22
6SA4	1600	1 3/8"Z6	212	22

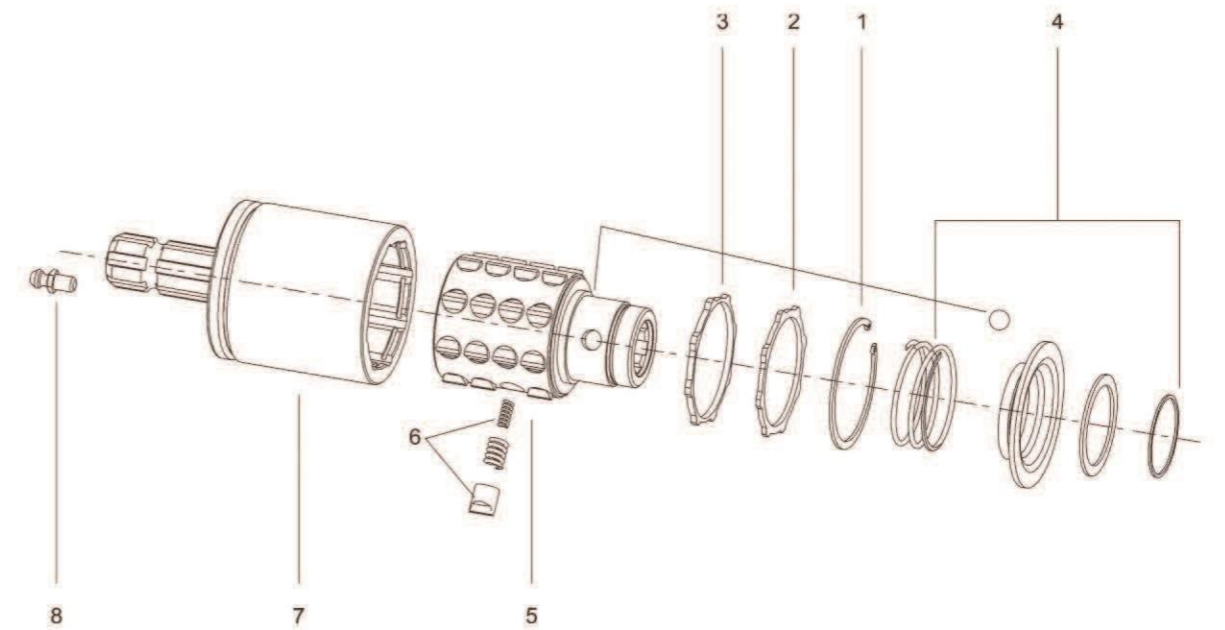


No.	Description	Notes
1	Circlip	
2	Retaining washer	
3	Dust guard ring	
4	Ball collar kit	
5	Hub	
6	Pawl kit	Qty.=32
7	Housing with yoke	
8	Grease nipple	

RATCHET TORQUE LIMITER

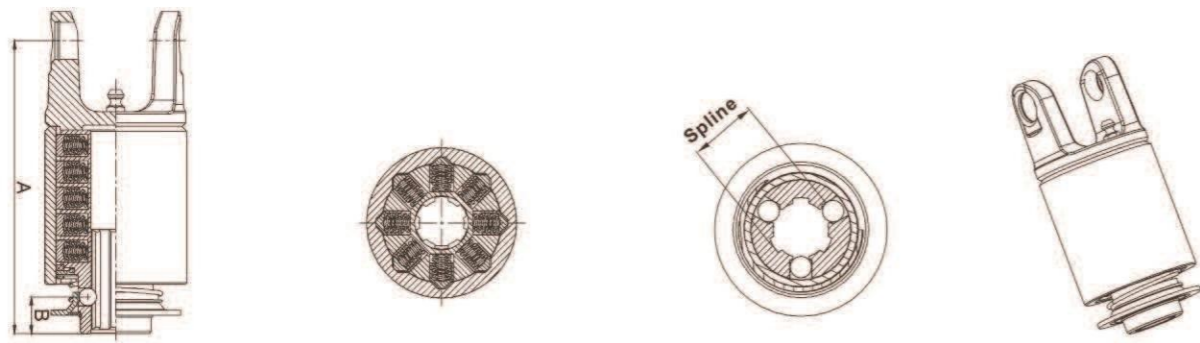


Series	Setting Torque(nm)	Spline(female)	Spline(male)	A(mm)	B(mm)	C(mm)
SAS4	1600	1 3/8"Z6	1 3/8"Z6	186	22	38

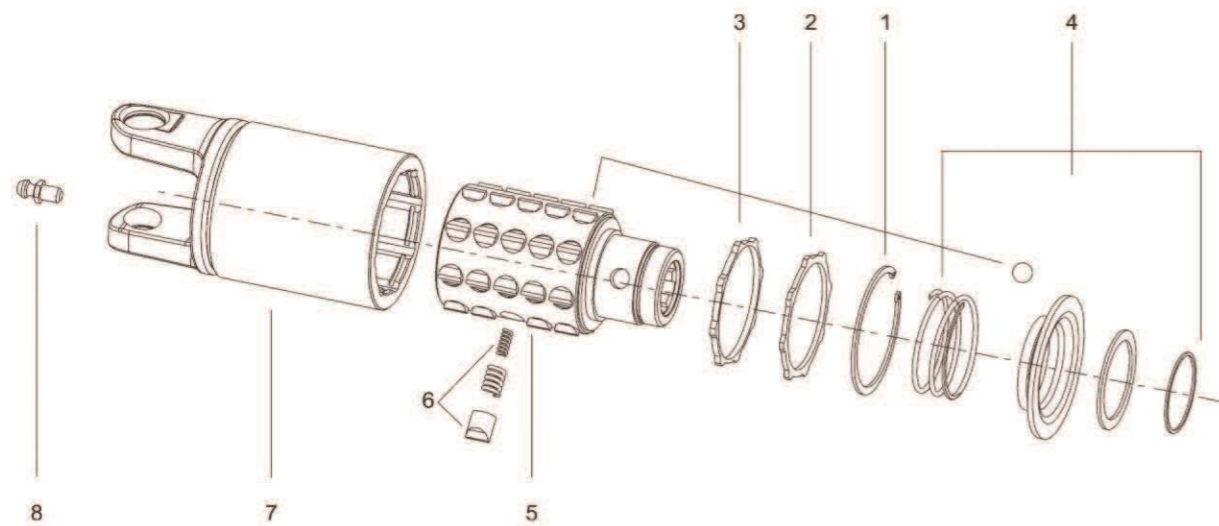


No.	Description	Notes
1	Circlip	
2	Retaining washer	
3	Dust guard ring	
4	Ball collar kit	
5	Hub	
6	Pawl kit	Qty.=32
7	Housing with yoke	
8	Grease nipple	

RATCHET TORQUE LIMITER

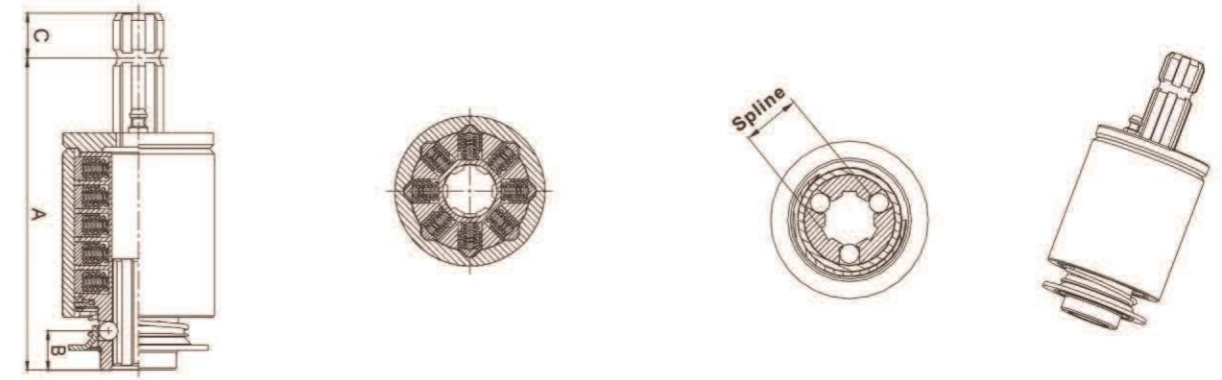


Series	Setting Torque (nm)	Spline	A(mm)	B(mm)
6SA5	2000	1 3/8"Z6	231	22

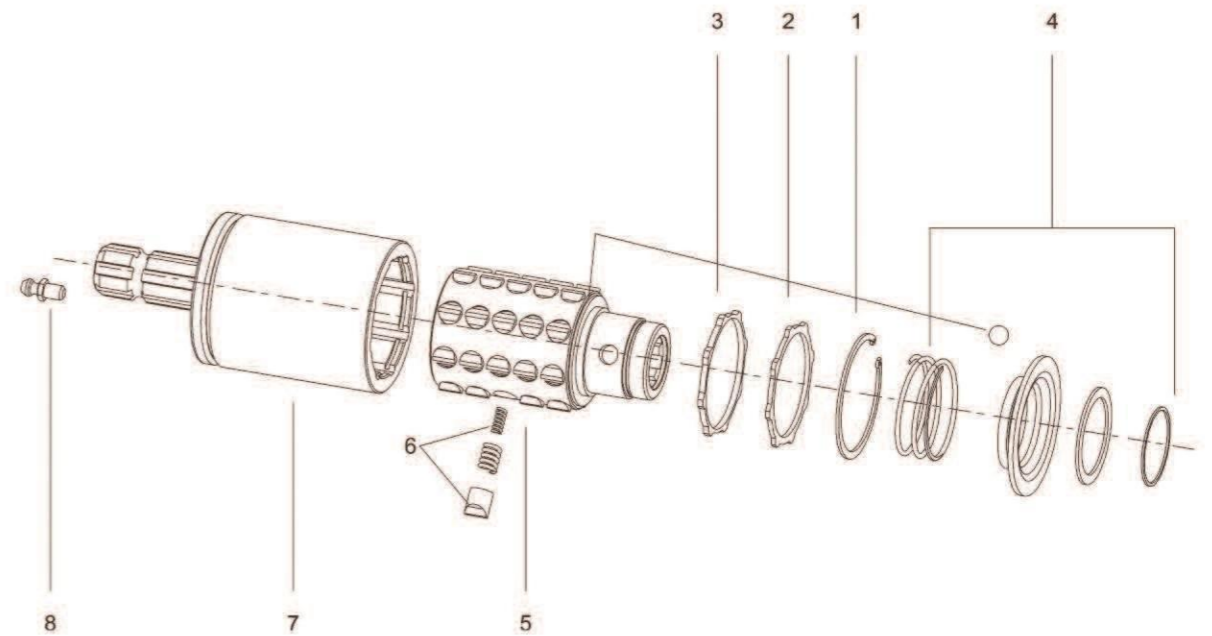


No.	Description	Notes
1	Circlip	
2	Retaining washer	
3	Dust guard ring	
4	Ball collar kit	
5	Hub	
6	Pawl kit	Qty.=40
7	Housing with yoke	
8	Grease nipple	

RATCHET TORQUE LIMITER

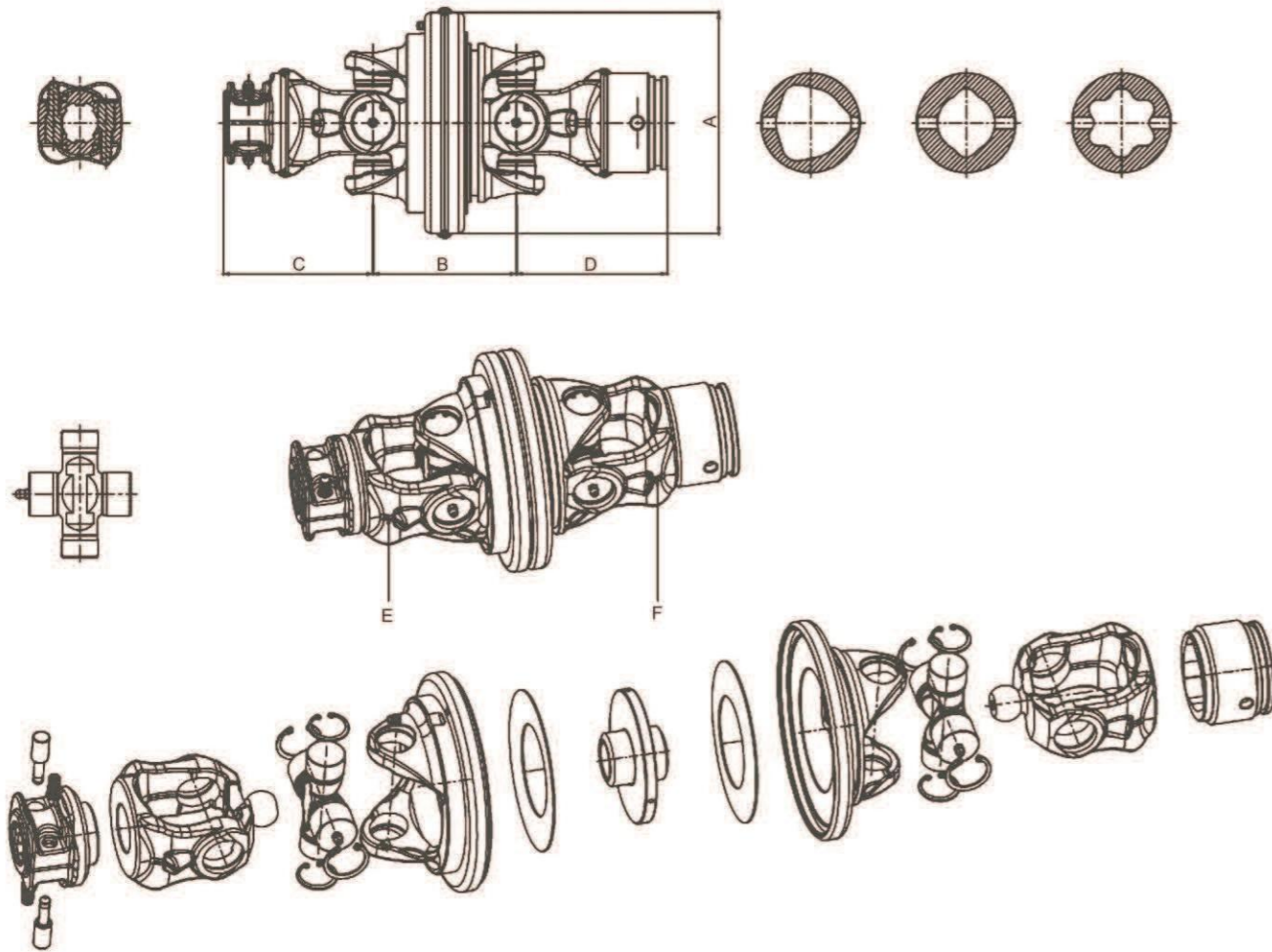


Series	Setting Torque(nm)	Spline(female)	Spline(male)	A(mm)	B(mm)	C(mm)
SAS5	2000	1 3/8"Z6	1 3/8"Z6	205	22	38



No.	Description	Notes
1	Circlip	
2	Retaining washer	
3	Dust guard ring	
4	Ball collar kit	
5	Hub	
6	Pawl kit	Qty.=40
7	Housing with yoke	
8	Grease nipple	

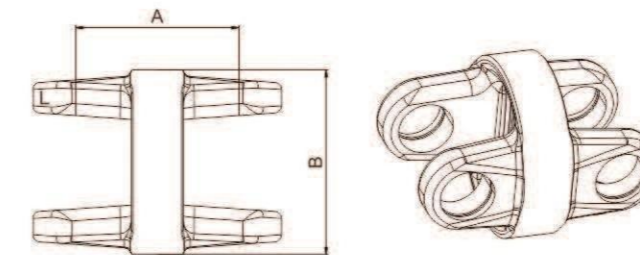
WIDE ANGLE JOINT



Series	Cross	A(mm)	B(mm)	C(mm)	D(mm)	E	F
2WA.01	23.8×61.3/22×76	153	104	119	105	2WA.0505B/D/G	2WA.06/06L
4WA.01	27×74.6/23.8×91	153	104	124	110	4WA.0505B/D/G	4WA.06/06L
6WA.01	30.2×92/27×100	176	105	136	127	6WA.0505B/D/G	6WA.06/06L/06ST
8WA.01	35×106.5/30.2×106	184	120	146	147	8WA.0505B/C/D/E	8WA.06/06L/06ST
32WA.01	32×76/27×94	176	105	126	117	32WA.0505B/D/G	32WA.06/.06L/06ST
36WA.01	36×89/32×106	184	120	125	126	36WA.0505B/C/D/E	36WA.06/06L/06ST
42WA.01	42×104.5/36×124	184	124	149	150	42WA.0505B/C/D/E	42WA.06/06ST/06G

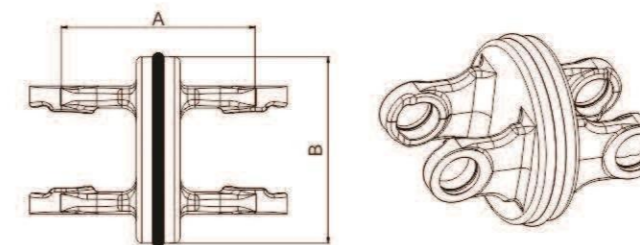
SD-DOUBLE JOINT

SD-DOUBLE JOINT (WHOLE)



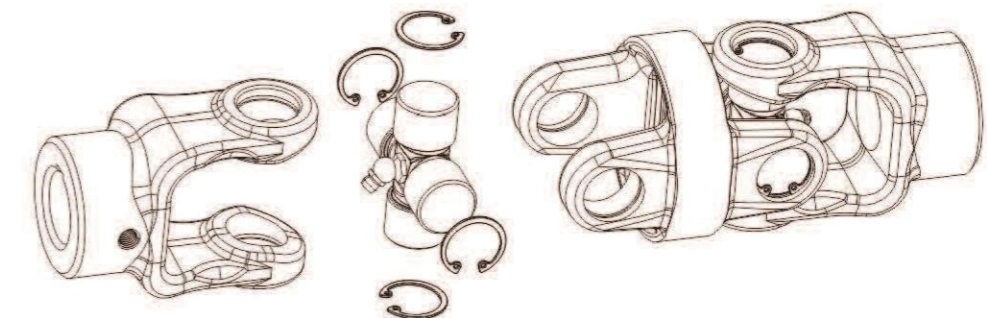
Series	Type	A(mm)	B(mm)
1	1.05.DY	66	72
2	2.05.DY	69	78
3	3.05.DY	79	80
4	1310.05.DY	68.5	99
5	100.05.DY	70	109
6	25HP.05.DY	69	78
7	50HP.05.DY	70	109

SD-DOUBLE JOINT (WELDED)

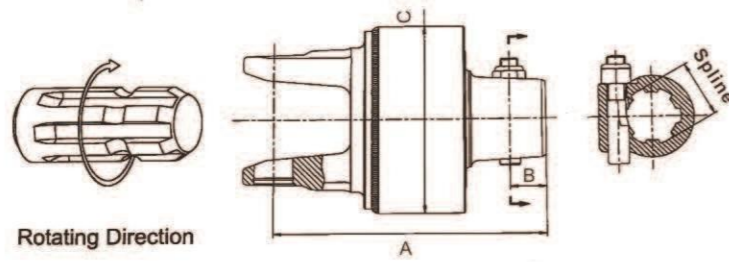


Series	Type	A(mm)	B(mm)
1	1.05.SDY	102	102
2	2.05.SDY	102	102
3	3.05.SDY	124	102
4	4.05.SDY	126	102
5	5.05.SDY	134	102
6	6.05.SDY	146	102
7	7.05.SDY	168	102
7N	7N.05.SDY	140	102
8	8.05.SDY	168	102
32	32.05.SDY	134	102
36	36.05.SDY	154	102
42	42.05.SDY	190	104

SD-DOUBLE JOINT (WHOLE)

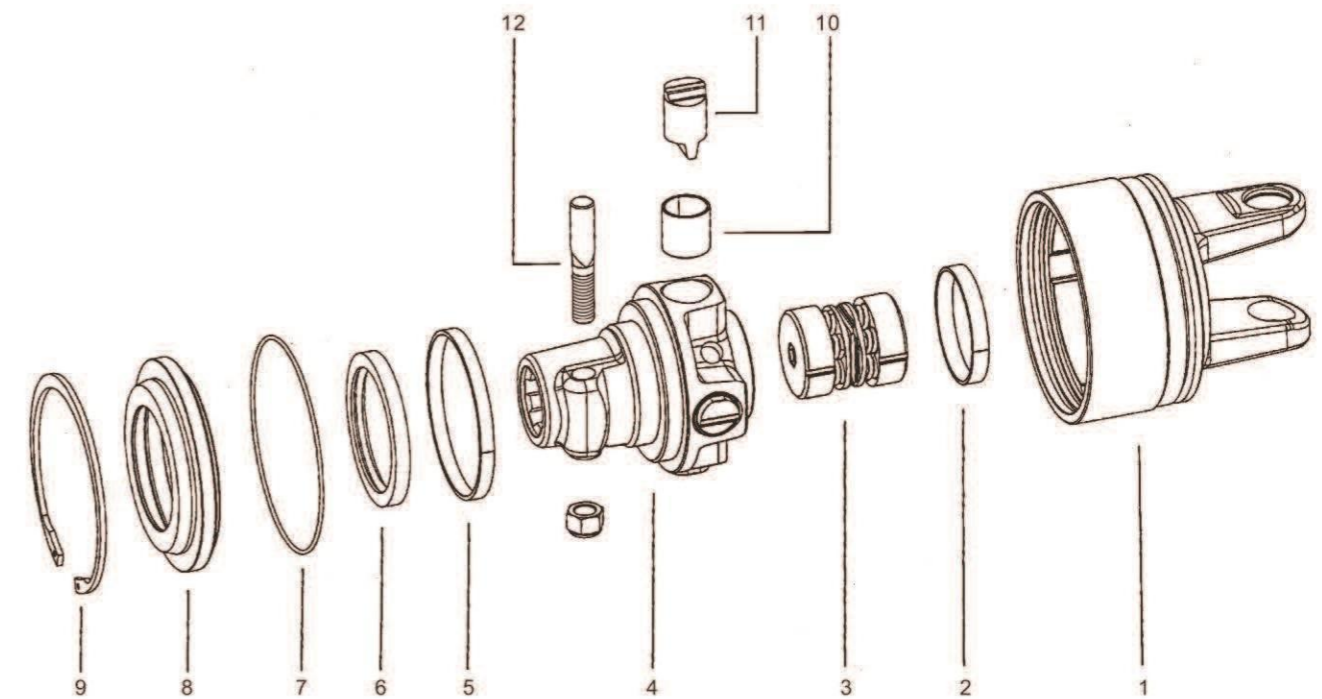


AUTOMATIC TORQUE LIMITER



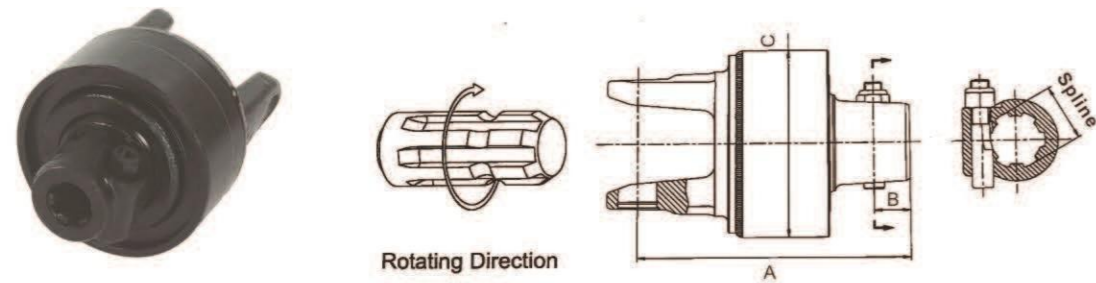
Series	Torque(nm)	Spline	A(mm)	B(mm)	C(mm)
4SC151	1600	1 3/8"Z6	207.5	28	Φ152
4SC151.D		1 3/8"Z21			
5SC151	2100	1 3/8"Z6	213		
6SC151.D		1 3/8"Z21			
6SC151	1 3/8"Z6				
6SC151.D	2600	1 3/8"Z21			
6SC151.C	2100	1 3/4"Z6			
6SC151.E		1 3/4"Z20			
7NSC151	2800	1 3/8"Z6	220		
7NSC151.D		1 3/8"Z21			
7NSC151.C		1 3/4"Z6			
7NSC151.E		1 3/4"Z20			
8SC151	2800	1 3/8"Z6	213		
8SC151.D		1 3/8"Z21			
8SC151.C		2600		1 3/4"Z6	
8SC151.E				1 3/4"Z20	
36SC151		2800		1 3/8"Z6	
36SC151.D	2600	1 3/8"Z21	224		
36SC151.C		1 3/4"Z6			
36SC151.E		1 3/4"Z20			
8SC176	3000	1 3/8"Z6	233		
8SC176.D		1 3/8"Z21			
8SC176.C		3500		1 3/8"Z6	
8SC176.E				1 3/8"Z21	
9SC176	4000	1 3/8"Z6	233		
9SC176.D		1 3/8"Z21			
9SC176.C		4500		1 3/4"Z6	
9SC176.E				1 3/4"Z20	
8SC176		3500		1 3/8"Z6	
8SC176.D	4000	1 3/8"Z21	28	Φ176	
8SC176.C		4500			1 3/4"Z6
8SC176.E		1 3/4"Z20			
8SC176	3500	1 3/8"Z6			
8SC176.D		4000			1 3/8"Z21
8SC176.C	4500	1 3/4"Z6			
8SC176.E					1 3/4"Z20
8SC176	3500	1 3/8"Z6			
8SC176.D		4000			1 3/8"Z21
8SC176.C	4500	1 3/4"Z6			
8SC176.E					1 3/4"Z20

AUTOMATIC TORQUE LIMITER



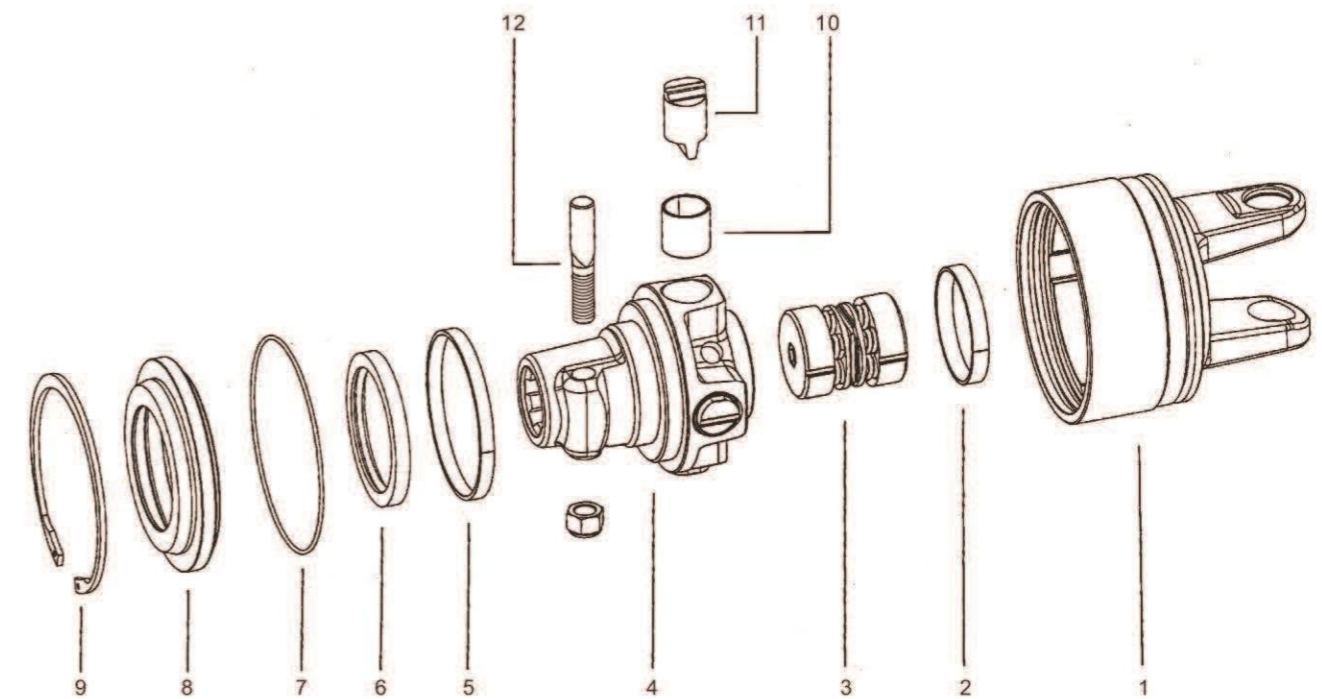
No.	Description	Notes
1	Outer housing + yoke	
2	Bushing	
3	Spring pack	
4	Hub with taper pin and bushings	
5	Bushing	
6	Sealing ring	
7	O-ring	
8	Locking plate	
9	Snap ring	
10	Bushing	Qty.=4
11	Cam	Qty.=4
12	Taper pin	With nuts

AUTOMATIC TORQUE LIMITER



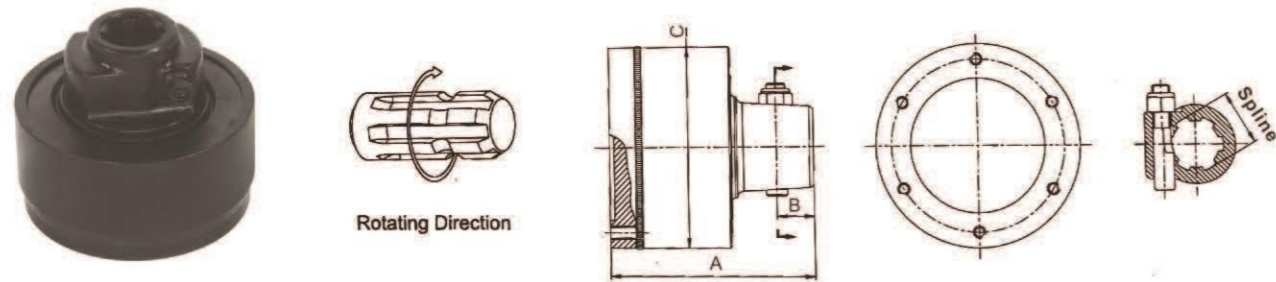
Series	Torque(nm)	Spline	A(mm)	B(mm)	C(mm)
4SC151	1600	1 3/8"Z6	207.5	28	Φ152
4SC151.D		1 3/8"Z21			
5SC151	2100	1 3/8"Z6	213		
6SC151.D		1 3/8"Z21			
6SC151	1 3/8"Z6				
6SC151.D	2600	1 3/8"Z21			
6SC151.C	2100	1 3/4"Z6			
6SC151.E		1 3/4"Z20			
7NSC151	2800	1 3/8"Z6	220		
7NSC151.D		1 3/8"Z21			
7NSC151.C		1 3/4"Z6			
7NSC151.E		1 3/4"Z20			
8SC151	2800	1 3/8"Z6	213		
8SC151.D		1 3/8"Z21			
8SC151.C		2600		1 3/4"Z6	
8SC151.E				1 3/4"Z20	
36SC151		2800		1 3/8"Z6	
36SC151.D	2600	1 3/8"Z21	224		
36SC151.C		1 3/4"Z6			
36SC151.E		1 3/4"Z20			
8SC176	3000	1 3/8"Z6	233		
8SC176.D		1 3/8"Z21			
8SC176.C		3500		1 3/8"Z6	
8SC176.E				1 3/8"Z21	
9SC176	4000	1 3/8"Z6	233		
9SC176.D		1 3/8"Z21			
9SC176.C		4500		1 3/4"Z6	
9SC176.E				1 3/4"Z20	
8SC176		3500		1 3/8"Z6	
8SC176.D	4000	1 3/8"Z21	28	Φ176	
8SC176.C		4500			1 3/4"Z6
8SC176.E		1 3/4"Z20			
8SC176	3500	1 3/8"Z6			
8SC176.D	4000	1 3/8"Z21			
8SC176.C	4500	1 3/4"Z6			
8SC176.E		1 3/4"Z20			
8SC176	3500	1 3/8"Z6			
8SC176.D	4000	1 3/8"Z21			
8SC176.C	4500	1 3/4"Z6			
8SC176.E	4500	1 3/4"Z20			

AUTOMATIC TORQUE LIMITER



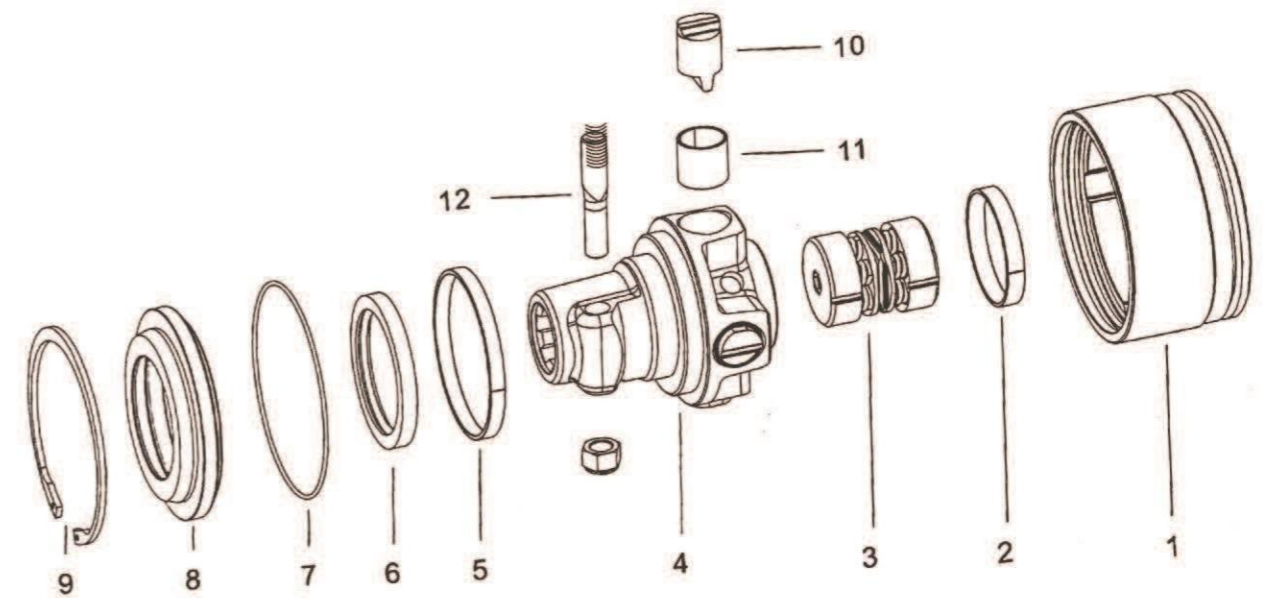
No.	Description	Notes
1	Outer housing + yoke	
2	Bushing	
3	Spring pack	
4	Hub with taper pin and bushings	
5	Bushing	
6	Sealing ring	
7	O-ring	
8	Locking plate	
9	Snap ring	
10	Bushing	Qty.=4
11	Cam	Qty.=4
12	Taper pin	With nuts

AUTOMATIC TORQUE LIMITER



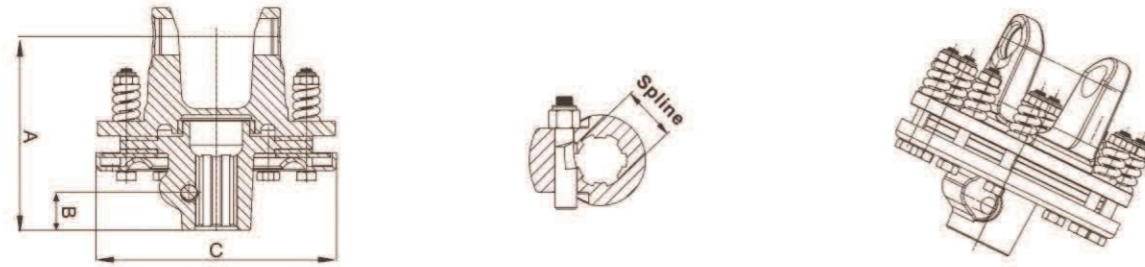
Series	Torque(nm)	Spline	A(mm)	B(mm)	C(mm)
SCF151	1600	1 3/8"Z6	171	29	Φ168
SCF151.D	2100	1 3/8"Z21			
SCF151.C	2600	1 3/4"Z6			
SCF151.E	2800	1 3/4"Z20			
SCF176	3000	1 3/8"Z6	175	28	Φ176
SCF176.D	3500	1 3/8"Z21			
SCF176.C	4000	1 3/4"Z6			
SCF176.E	4500	1 3/4"Z20			

AUTOMATIC TORQUE LIMITER



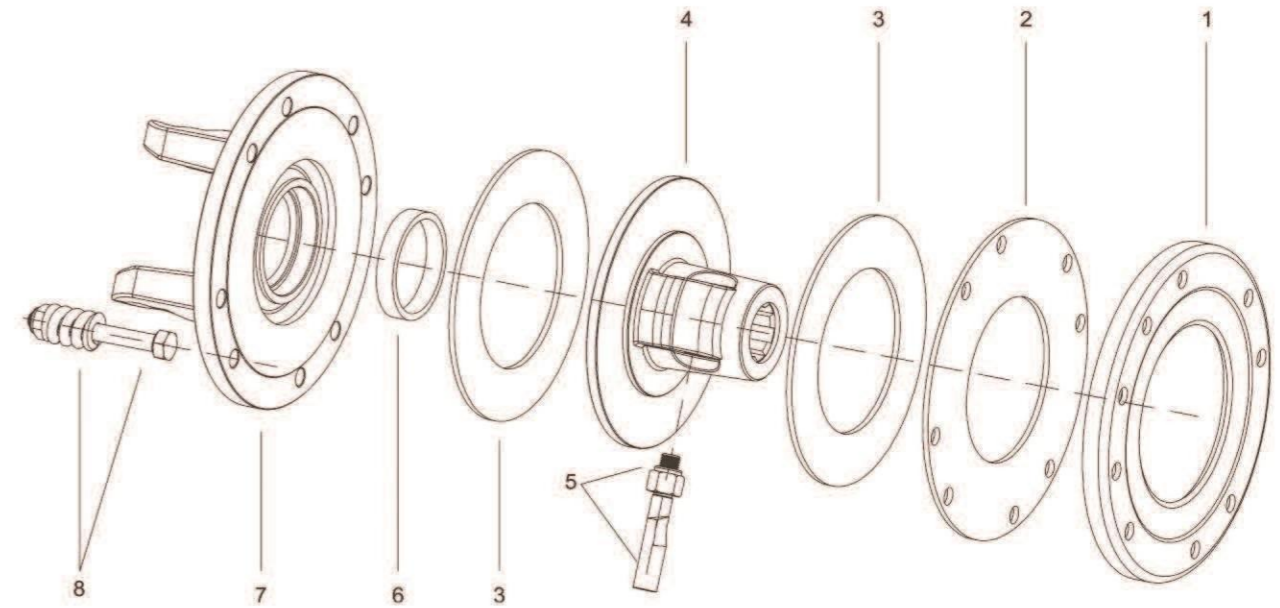
No.	Description	Notes
1	Outer housing+flange	
2	Bushing	
3	Spring pack	
4	Hub with taper pin and bushings	
5	Bushing	
6	Sealing ring	
7	O-ring	
8	Locking plate	
9	Snap ring	
10	Bushing	Qty.=4
11	Cam	Qty.=4
12	Taper pin	With nuts

FRICITION TORQUE LIMITER



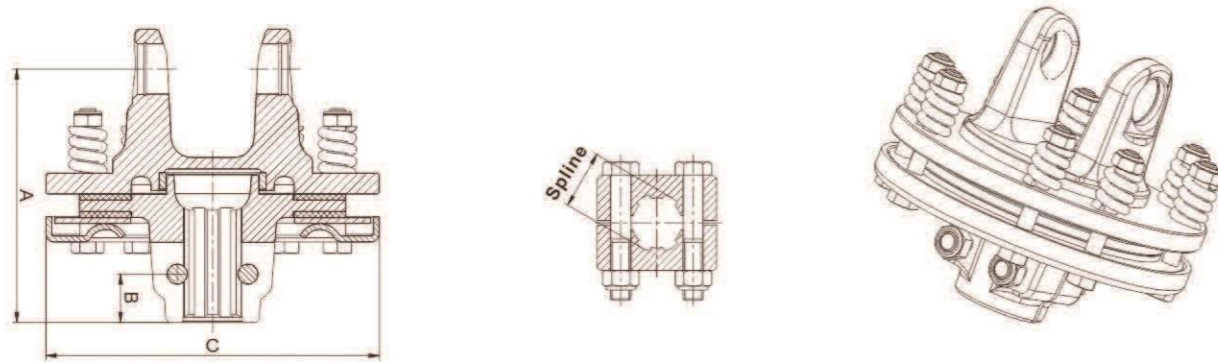
Series	Max Torque(nm)	Friction Disc	Spline	A(mm)	B(mm)	C(mm)
4FF0	800	Φ120	1 3/8"Z6	135	29	Φ160
5FF0	1000		1 3/8"Z6	137		
4FF1	1200	Φ140	1 3/8"Z6	150	29	Φ180
4FF1D			1 3/8"Z21	150		
5FF1			1 3/8"Z6	152		
5FF1D			1 3/8"Z21	152		
6FF1			1 3/8"Z6	160		
6FF1D			1 3/8"Z21	160		
4FF2	1500	Φ160	1 3/8"Z6	150	29	Φ200
4FF2D			1 3/8"Z21	150		
5FF2	1500	Φ160	1 3/8"Z6	152	29	Φ200
5FF2D			1 3/8"Z21			
5FF2C			1 3/4"Z6			
5FF2E			1 3/4"Z20			
6FF2	1500	Φ160	1 3/8"Z6	164	29	Φ200
6FF2D			1 3/8"Z21			
6FF2C			1 3/4"Z6			
6FF2E			1 3/4"Z20			
7FF2	1800	Φ160	1 3/8"Z6	169	29	Φ200
7FF2D			1 3/8"Z21			
7FF2C			1 3/4"Z6			
7FF2E			1 3/4"Z20	164		
7NFF2			1 3/8"Z6			
7NFF2D			1 3/8"Z21			
7NFF2C	1 3/4"Z6	169				
7NFF2E	1 3/4"Z20					
8FF2	1 3/8"Z6					
8FF2D	1 3/8"Z21	169				
8FF2C	1 3/4"Z6					
8FF2E	1 3/4"Z20					

FRICITION TORQUE LIMITER



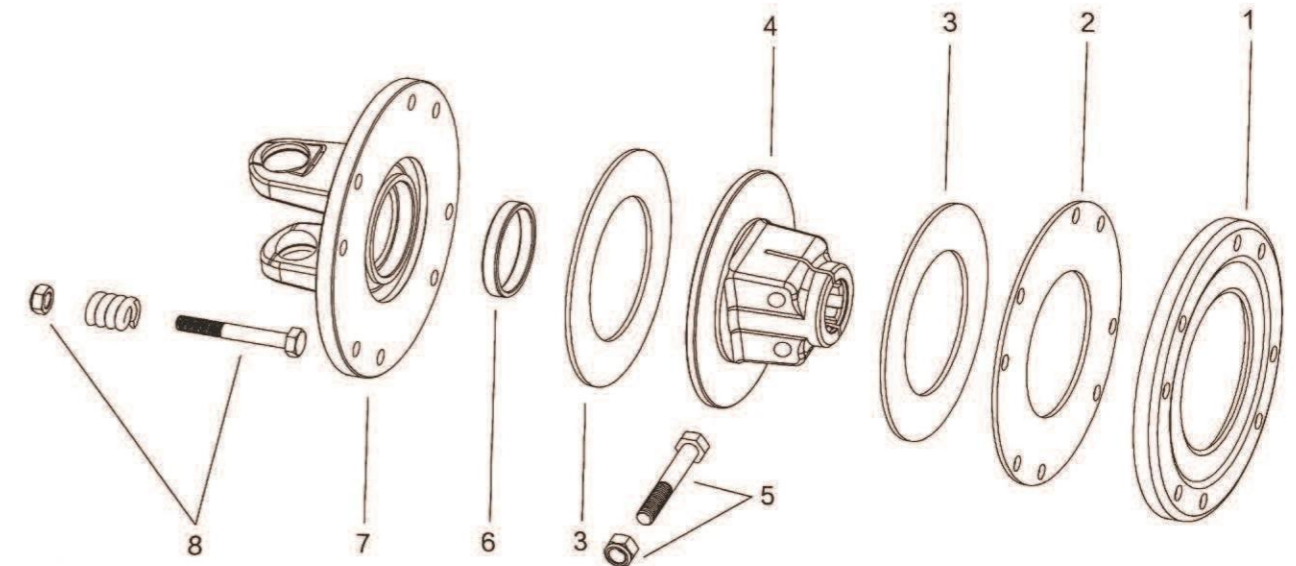
No.	Description	Notes
1	Pressure plate	
2	Internal disc	
3	Friction lining	Qty.=2
4	Hub	
5	Taper pin for hub	With nuts
6	Bushing	
7	Flanged yoke	
8	Complete bolt&Spring	Qty.=8

FRICITION TORQUE LIMITER



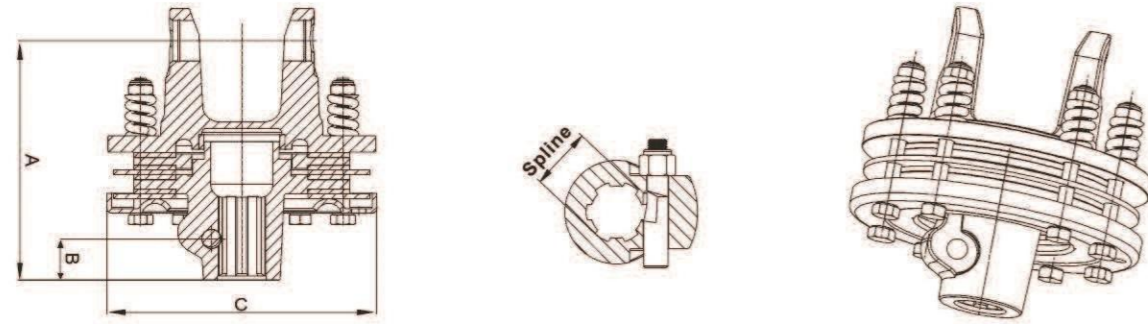
Series	Max Torque(nm)	Friction Disc	Spline	A(mm)	B(mm)	C(mm)
4FFV1	1200	Φ140	1 3/8"Z6	150	30.5	Φ180
4FFV1D	900		1 3/8"Z21			
5FFV1	1200	Φ140	1 3/8"Z6	152	30.5	Φ180
5FFV1D	900		1 3/8"Z21			
6FFV1	1200	Φ140	1 3/8"Z6	160	30.5	Φ180
6FFV1D	1200		1 3/8"Z21			
4FFV2	1200	Φ160	1 3/8"Z6	143	26	Φ200
4FFV2D	1200		1 3/8"Z21			
5FFV2	1500	Φ160	1 3/8"Z6	145	26	Φ200
5FFV2D			1 3/8"Z21			
5FFV2C	1500	Φ160	1 3/4"Z6	151	30.5	Φ200
5FFV2E			1 3/4"Z20			
6FFV2	1500	Φ160	1 3/8"Z6	157	26	Φ200
6FFV2D			1 3/8"Z21			
6FFV2C	1500	Φ160	1 3/4"Z6	163	30.5	Φ200
6FFV2E			1 3/4"Z20			
7FFV2	1800	Φ160	1 3/8"Z6	162	26	Φ200
7FFV2D			1 3/8"Z21			
7FFV2C	1800	Φ160	1 3/4"Z6	168	30.5	Φ200
7FFV2E			1 3/4"Z20			
7NFFV2	1800	Φ160	1 3/8"Z6	157	26	Φ200
7NFFV2D			1 3/8"Z21			
7NFFV2C	1800	Φ160	1 3/4"Z6	163	30.5	Φ200
7NFFV2E			1 3/4"Z20			
8FFV2	1800	Φ160	1 3/8"Z6	162	26	Φ200
8FFV2D			1 3/8"Z21			
8FFV2C	1800	Φ160	1 3/4"Z6	168	30.5	Φ200
8FFV2E			1 3/4"Z20			

FRICITION TORQUE LIMITER



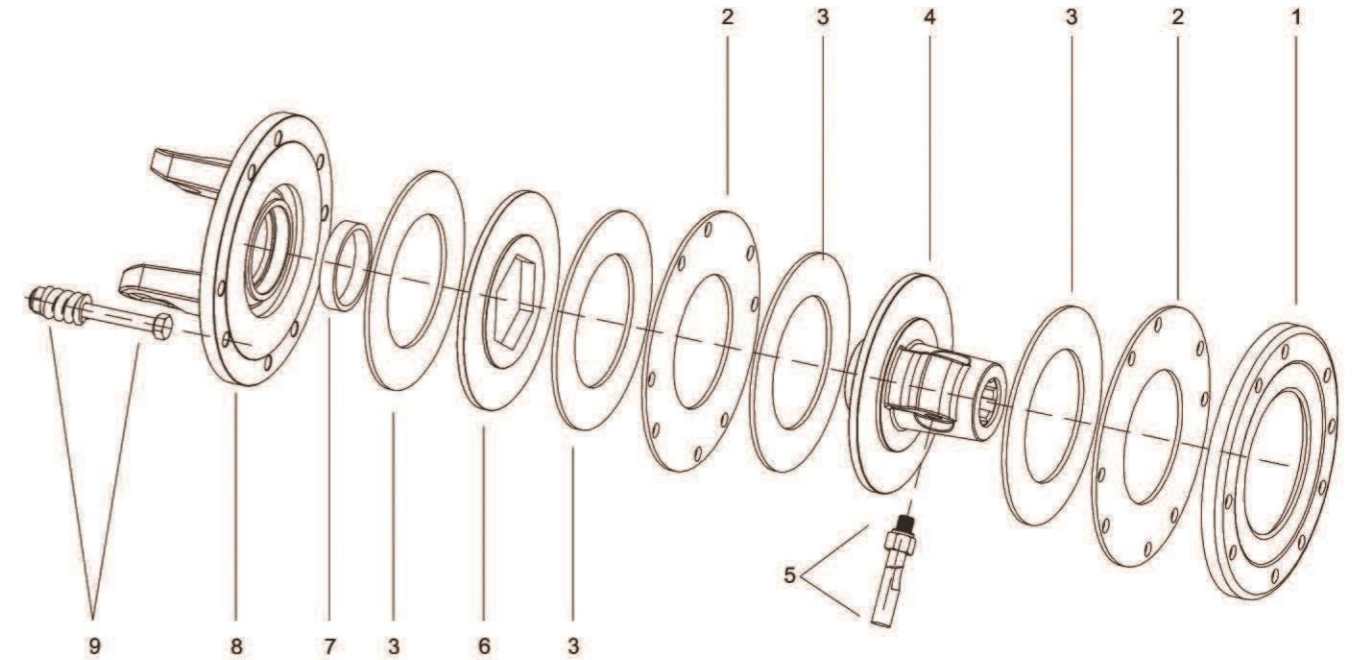
No.	Description	Notes
1	Pressure plate	
2	Internal disc	
3	Friction lining	Qty.=2
4	Hub	
5	Complete bolt	Qty.=2
6	Bushing	
7	Flanged yoke	
8	Complete bolt&Spring	Qty.=8

FRICITION TORQUE LIMITER



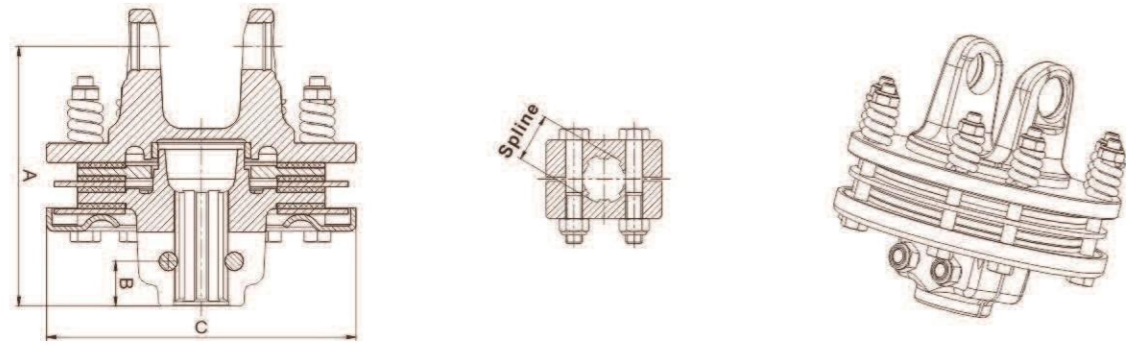
Series	Max Torque(nm)	Friction Disc	Spline	A(mm)	B(mm)	C(mm)
5FF3	2000	Φ140	1 3/8"Z6	168	29	Φ180
5FF3.D			1 3/8"Z21			
6FF3	2000	Φ140	1 3/8"Z6	176	29	Φ180
6FF3.D			1 3/8"Z21			
5FF4	2000	Φ160	1 3/8"Z6	168	29	Φ200
5FF4D			1 3/8"Z21			
5FF4C	2000	Φ160	1 3/4"Z6	168	29	Φ200
5FF4E			1 3/4"Z20			
6FF4	2000	Φ160	1 3/8"Z6	180	29	Φ200
6FF4D			1 3/8"Z21			
6FF4C			1 3/4"Z6			
6FF4E			1 3/4"Z20			
7FF4			1 3/8"Z6			
7FF4D	1 3/8"Z21	185	29	Φ200		
7FF4C	1 3/4"Z6					
7FF4E	1 3/4"Z20					
7NFF4	2200	Φ160	1 3/8"Z6	180	29	Φ200
7NFF4D			1 3/8"Z21			
7NFF4C			1 3/4"Z6			
7NFF4E	1 3/4"Z20					
8FF4	2500	Φ160	1 3/8"Z6	185	29	Φ200
8FF4D			1 3/8"Z21			
8FF4C			1 3/4"Z6			
8FF4E			1 3/4"Z20			
9FF4	2800	Φ160	1 3/8"Z6	190	29	Φ200
9FF4D			1 3/8"Z21			
9FF4C			1 3/4"Z6			
9FF4E			1 3/4"Z20			
10FF4	3000	Φ160	1 3/8"Z6	190	29	Φ200
10FF4D			1 3/8"Z21			
10FF4C			1 3/4"Z6			
10FF4E			1 3/4"Z20			
42FF4	2800	Φ160	1 3/8"Z6	190	29	Φ200
42FF4D			1 3/8"Z21			
42FF4C			1 3/4"Z6			
42FF4E			1 3/4"Z20			

FRICITION TORQUE LIMITER



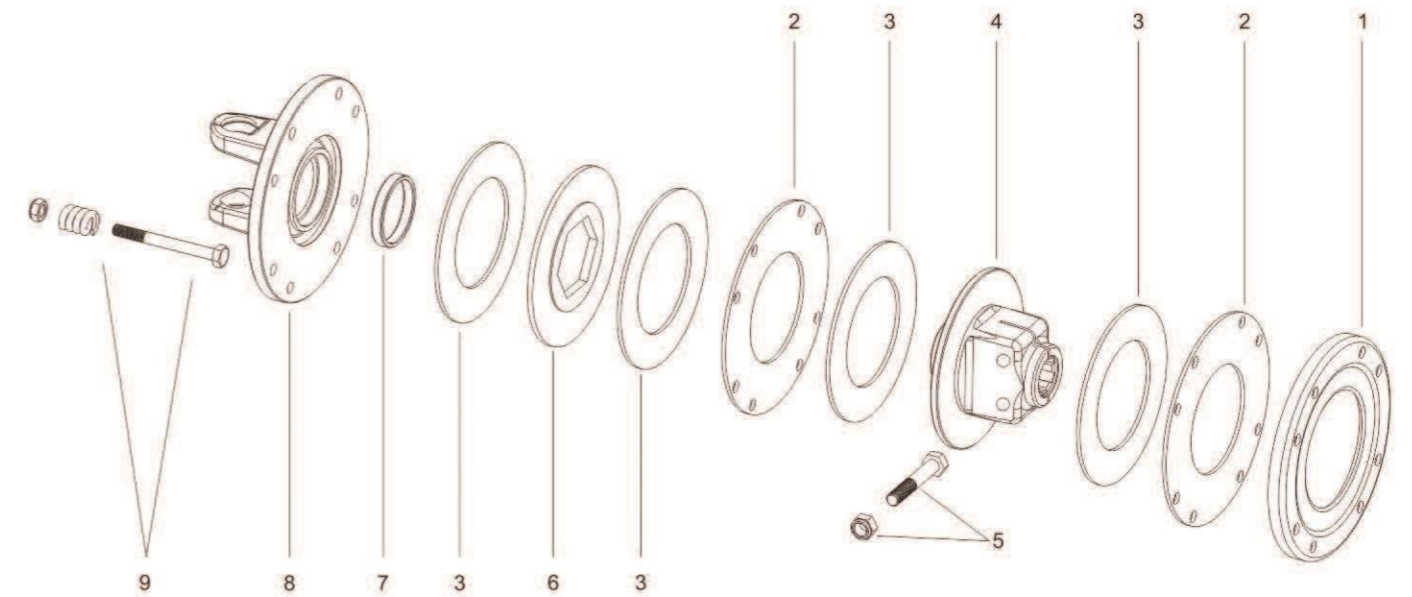
No.	Description	Notes
1	Pressure plate	
2	Internal disc	Qty.=2
3	Friction lining	Qty.=4
4	Hub	
5	Taper pin for hub	With nuts
6	Intermediate hub	
7	Bushing	
8	Flanged yoke	
9	Complete bolt&Spring	Qty.=8

FRICITION TORQUE LIMITER



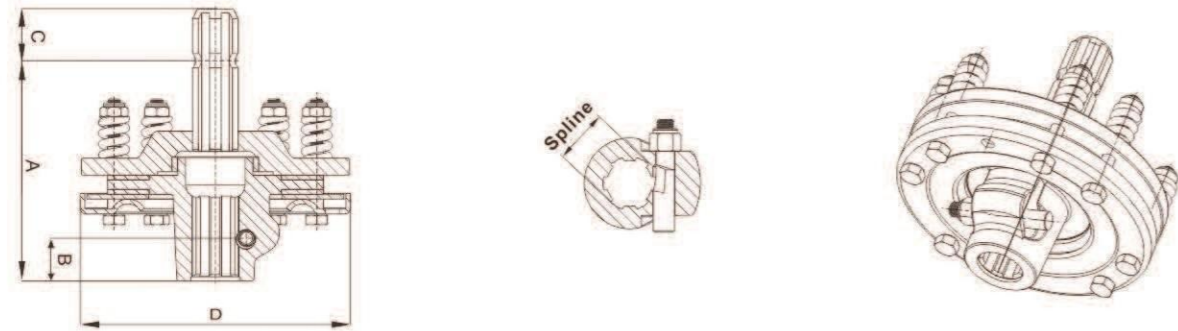
Series	Max Torque(nm)	Friction Disc	Spline	A(mm)	B(mm)	C(mm)
5FFV3	2000	Φ140	1 3/8"Z6	160	30.5	Φ180
5FFV3.D			1 3/8"Z21			
6FFV3	2000	Φ140	1 3/8"Z6	168	30.5	Φ180
6FFV3.D			1 3/8"Z21			
5FFV4	2000	Φ160	1 3/8"Z6	160	30.5	Φ200
5FFV4D			1 3/8"Z21			
5FFV4C	2000	Φ160	1 3/4"Z6	167	30.5	Φ200
5FFV4E			1 3/4"Z20			
6FFV4	2000	Φ160	1 3/8"Z6	172	30.5	Φ200
6FFV4D			1 3/8"Z21			
6FFV4C			1 3/4"Z6	179		
6FFV4E			1 3/4"Z20			
7FFV4			2200	Φ160		
7FFV4D	1 3/8"Z21					
7FFV4C	1 3/4"Z6	184				
7FFV4E	1 3/4"Z20					
7NFFV4	1 3/8"Z6	172				
7NFFV4D	1 3/8"Z21					
7NFFV4C	1 3/4"Z6	179				
7NFFV4E	1 3/4"Z20					
8FFV4	2500	Φ160	1 3/8"Z6	177	30.5	Φ200
8FFV4D			1 3/8"Z21			
8FFV4C			1 3/4"Z6	184		
8FFV4E			1 3/4"Z20			
9FFV4	2800	Φ160	1 3/8"Z6	182	30.5	Φ200
9FFV4D			1 3/8"Z21			
9FFV4C			1 3/4"Z6	189		
9FFV4E			1 3/4"Z20			
10FFV4	2800	Φ160	1 3/8"Z6	182	30.5	Φ200
10FFV4D			1 3/8"Z21			
10FFV4C			1 3/4"Z6	189		
10FFV4E			1 3/4"Z20			
42FFV4	2800	Φ160	1 3/8"Z6	182	30.5	Φ200
42FFV4D			1 3/8"Z21			
42FFV4C			1 3/4"Z6	189		
42FFV4E			1 3/4"Z20			

FRICITION TORQUE LIMITER

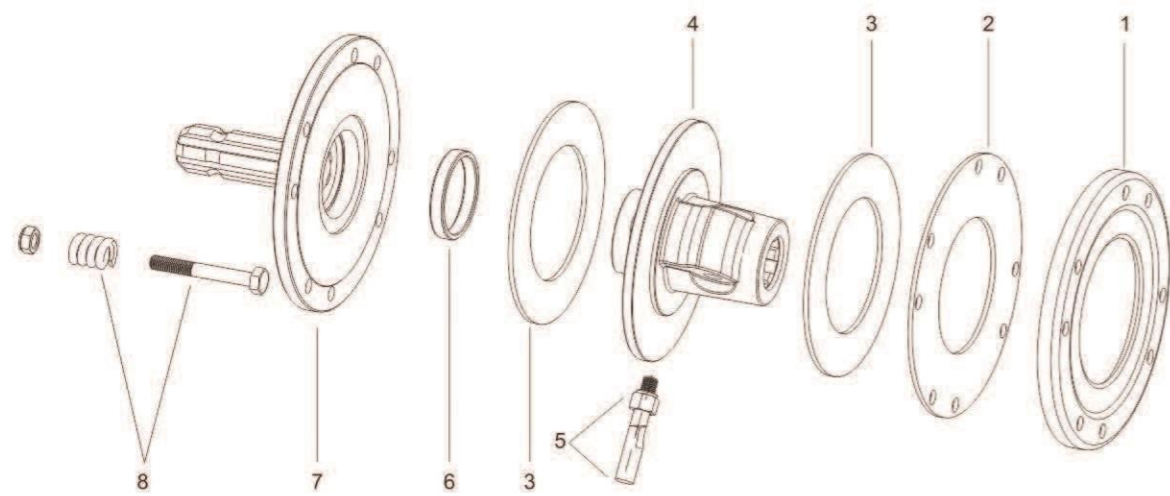


No.	Description	Notes
1	Pressure plate	
2	Internal disc	Qty.=2
3	Friction lining	Qty.=4
4	Hub	
5	Complete bolt	Qty.=2
6	Intermediate hub	
7	Bushing	
8	Flanged yoke	
9	Complete bolt&Spring	Qty.=8

FRICITION TORQUE LIMITER

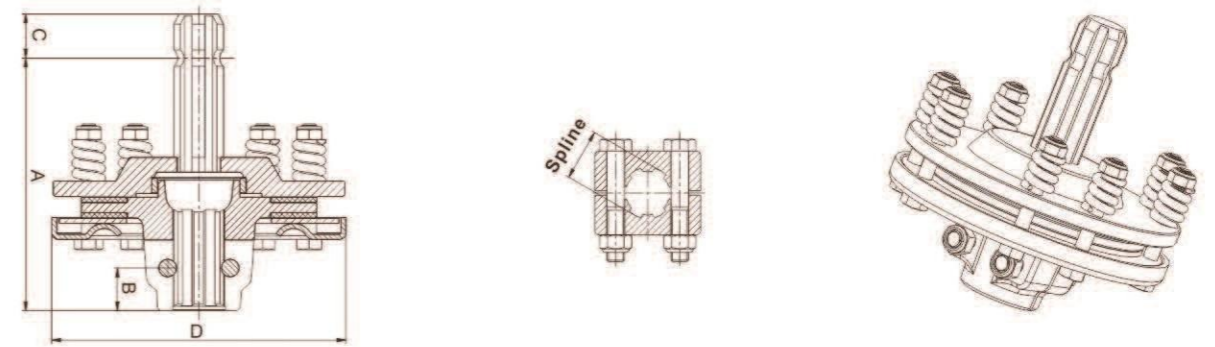


Series	Max Torque(nm)	Friction Disc	Spline(female)	Spline(male)	A(mm)	B(mm)	C(mm)	D(mm)
FFS1	1200	Φ140	1 3/8"Z6	1 3/8"Z6	161.5	29	38	Φ180
FFS1D			1 3/8"Z21					
FFS2	1800	Φ160	1 3/8"Z6	1 3/8"Z6	161.5	29	38	Φ200
FFS2D			1 3/8"Z21					
FFS2C			1 3/8"Z6					
FFS2E			1 3/8"Z20					

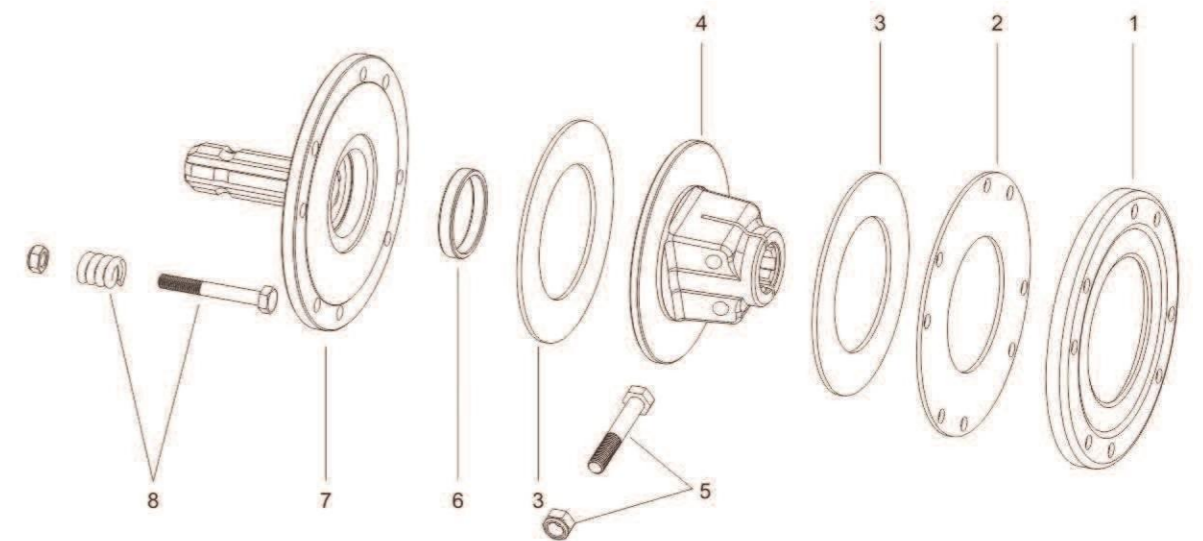


No.	Description	Notes
1	Pressure plate	
2	Internal disc	
3	Friction lining	Qty.=2
4	Hub	
5	Taper pin for hub	With nuts
6	Bushing	
7	Flanged spline	
8	Complete bolt & Spring	Qty.=8

FRICITION TORQUE LIMITER

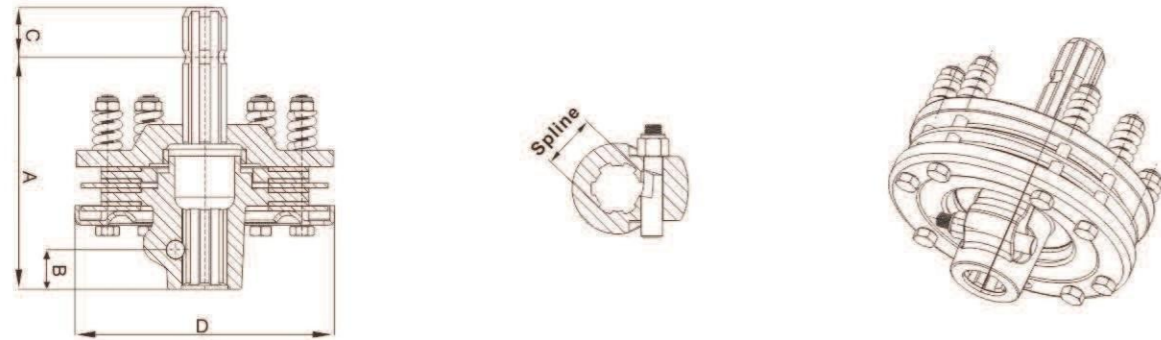


Series	Max Torque(nm)	Friction Disc	Spline(female)	Spline(male)	A(mm)	B(mm)	C(mm)	D(mm)
FFVS1	1200	Φ140	1 3/8"Z6	1 3/8"Z6	161.5	29	38	Φ180
FFVS1D	900		1 3/8"Z21					
FFVS2	1800	Φ160	1 3/8"Z6	1 3/8"Z6	161.5	29	38	Φ200
FFVS2D			1 3/8"Z21					
FFVS2C			1 3/8"Z6					
FFVS2E			1 3/8"Z20					

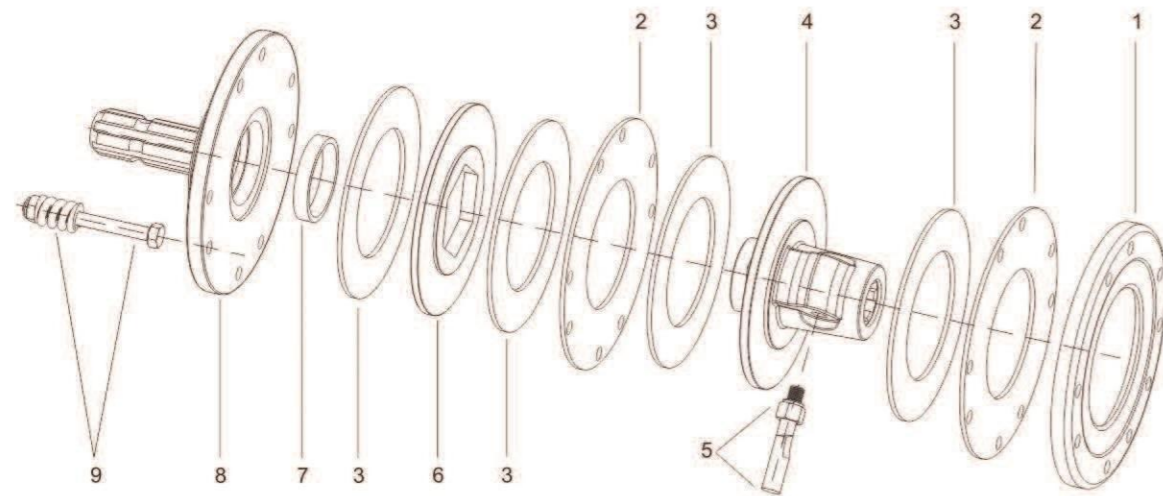


No.	Description	Notes
1	Pressure plate	
2	Internal disc	
3	Friction lining	Qty.=2
4	Hub	
5	Complete bolt	Qty.=2
6	Bushing	
7	Flanged spline	
8	Complete bolt & Spring	Qty.=8

FRICITION TORQUE LIMITER

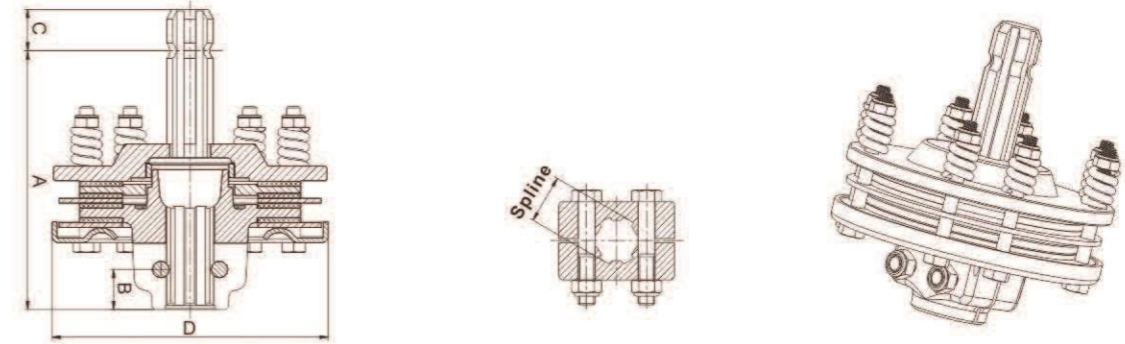


Series	Max Torque(nm)	Friction Disc	Spline(female)	Spline(male)	A(mm)	B(mm)	C(mm)	D(mm)
FFS3	1500	Φ140	1 3/8"Z6	1 3/8"Z6	177	29	38	Φ180
FFS3D			1 3/8"Z21					
FFS4	2500	Φ160	1 3/8"Z6	1 3/8"Z6	177	29	38	Φ200
FFS4D			1 3/8"Z21					
FFS4C			1 3/8"Z6					
FFS4E			1 3/8"Z20					

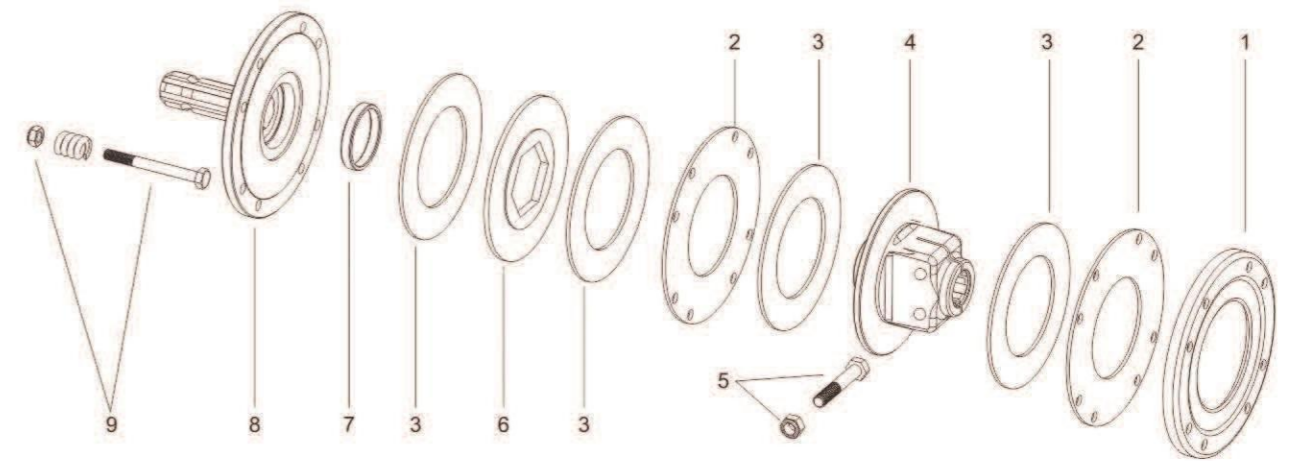


No.	Description	Notes
1	Pressure plate	
2	Internal disc	Qty.=2
3	Friction lining	Qty.=4
4	Hub	
5	Taper pin for hub	With nuts
6	Intermediate hub	
7	Bushing	
8	Flanged spline	
9	Complete bolt & Spring	Qty.=8

FRICITION TORQUE LIMITER

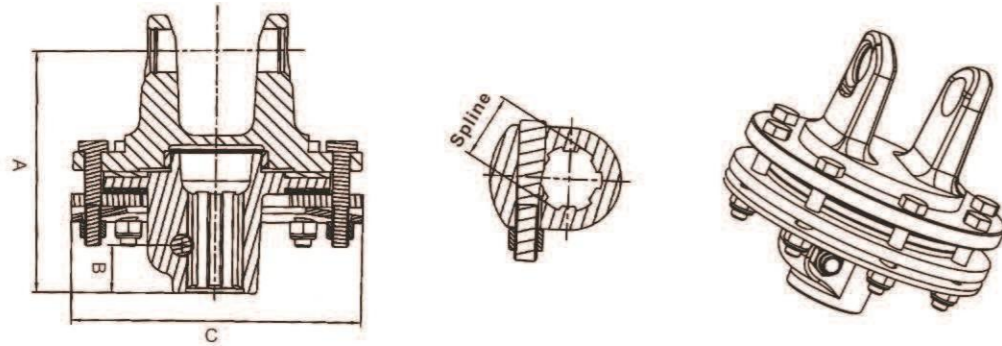


Series	Max Torque(nm)	Friction Disc	Spline(female)	Spline(male)	A(mm)	B(mm)	C(mm)	D(mm)
FFVS3	2000	Φ140	1 3/8"Z6	1 3/8"Z6	177	29	38	Φ180
FFVS3D			1 3/8"Z21					
FFVS4	2500	Φ160	1 3/8"Z6	1 3/8"Z6	177	29	38	Φ200
FFVS4D			1 3/8"Z21					
FFVS4C			1 3/8"Z6					
FFVS4E			1 3/8"Z20					



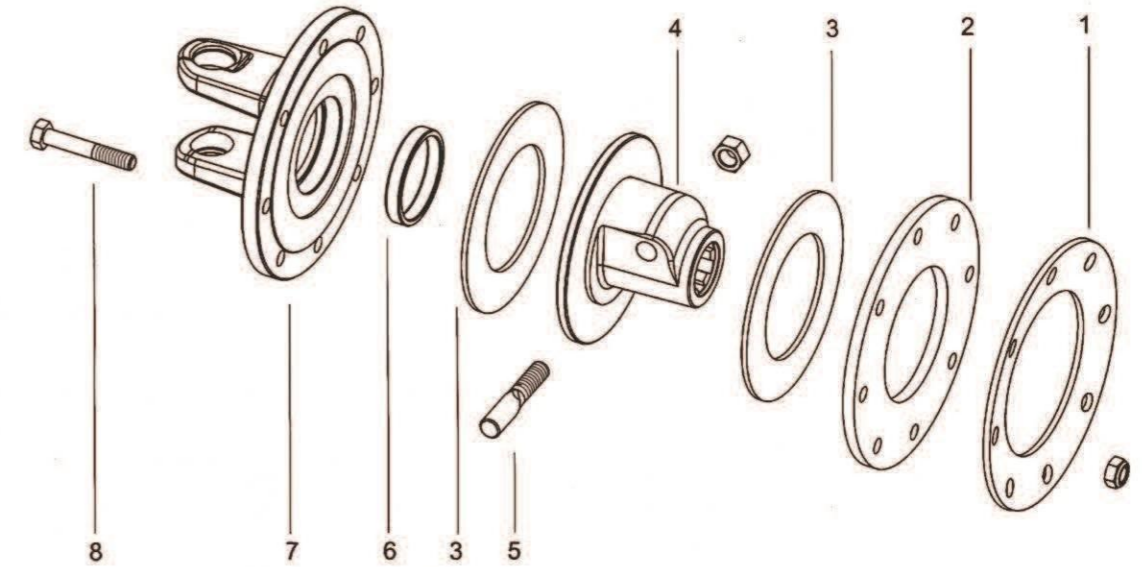
No.	Description	Notes
1	Pressure plate	
2	Internal disc	Qty.=2
3	Friction lining	Qty.=4
4	Hub	
5	Complete bolt	Qty.=2
6	Intermediate hub	
7	Bushing	
8	Flanged spline	
9	Complete bolt & Spring	Qty.=8

FRICITION TORQUE LIMITER



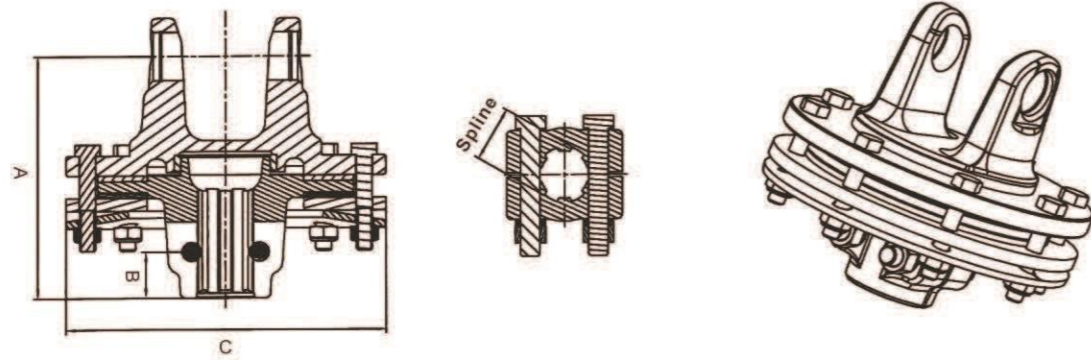
Series	Max Torque(nm)	Friction Disc	Spline	A(mm)	B(mm)	C(mm)
4FFT0	800	Φ120	1 3/8"Z6	150	29	Φ160
5FFT0			1 3/8"Z6	152		
4FFT1	900	Φ140	1 3/8"Z6	150	29	Φ180
4FFT1D			1 3/8"Z21	152		
5FFT1			1 3/8"Z6	160		
5FFT1D			1 3/8"Z21	164		
6FFT1			1 3/8"Z6	169		
6FFT1D			1 3/8"Z21	164		
5FFT2	1200	Φ160	1 3/8"Z6	152	29	Φ200
5FFT2D			1 3/8"Z21			
5FFT2C			1 3/4"Z6			
5FFT2E			1 3/4"Z20			
6FFT2			1 3/8"Z6	164		
6FFT2D			1 3/8"Z21			
6FFT2C			1 3/4"Z6			
6FFT2E			1 3/4"Z20			
7FFT2			1 3/8"Z6	169		
7FFT2D			1 3/8"Z21			
7FFT2C			1 3/4"Z6			
7FFT2E			1 3/4"Z20			
7NFFT2	1 3/8"Z6	164				
7NFFT2D	1 3/8"Z21					
7NFFT2C	1 3/4"Z6					
7NFFT2E	1 3/4"Z20					
8FFT2	1200	Φ160	1 3/8"Z6	169	29	Φ200
8FFT2D			1 3/8"Z21			
8FFT2C			1 3/4"Z6			
8FFT2E			1 3/4"Z20			

FRICITION TORQUE LIMITER



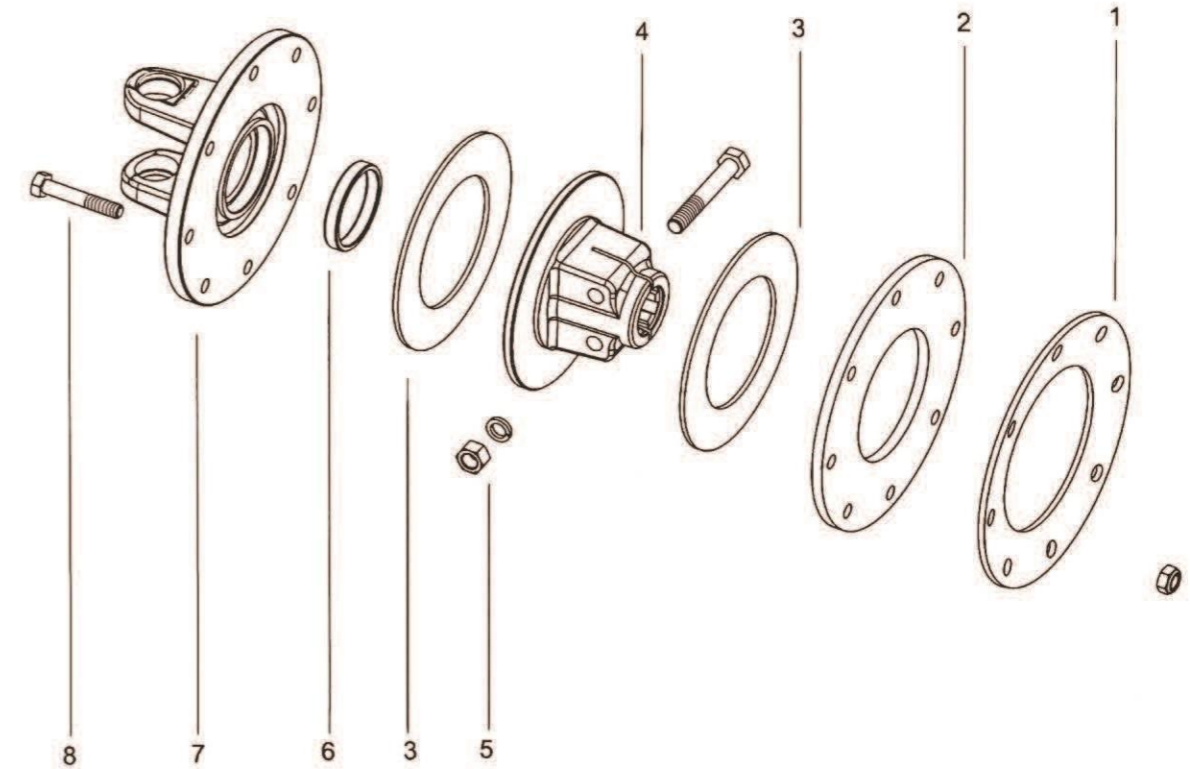
No.	Description	Notes
1	Belleville spring	
2	Pressure plate	
3	Friction discs	Qty.=2
4	Hub	
5	Taper pin for hub	With nuts
6	Bushing	
7	Flanged yoke	
8	Complete bolt	Qty.=8

FRICITION TORQUE LIMITER



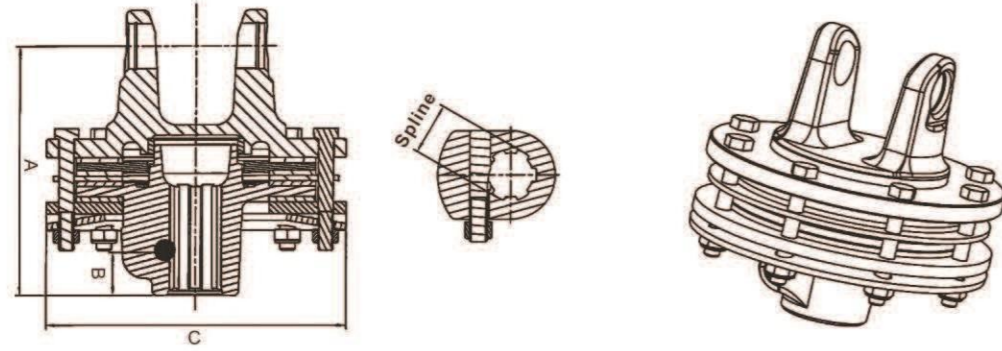
Series	Max Torque(nm)	Friction Disc	Spline	A(mm)	B(mm)	C(mm)
4FFVT1	900	Φ140	1 3/8"Z6	150	29	Φ180
4FFVT1D			1 3/8"Z21			
5FFVT1			1 3/8"Z6	152		
5FFVT1D			1 3/8"Z21			
6FFVT1			1 3/8"Z6	160		
6FFVT1D			1 3/8"Z21			
5FFVT1	1200	Φ160	1 3/8"Z6	152	29	Φ200
5FFVT1D			1 3/8"Z21			
6FFVT1			1 3/8"Z6	160		
6FFVT1D			1 3/8"Z21			
4FFVT2			1 3/8"Z6	143		
4FFVT2D			1 3/8"Z21			
5FFVT2			1 3/8"Z6	145		
5FFVT2D			1 3/8"Z21			
6FFVT2			1 3/8"Z6	153		
6FFVT2D			1 3/8"Z21			
6FFVT2C			1 3/4"Z6	163		
6FFVT2E			1 3/4"Z20			
7FFVT2	1 3/8"Z6	162				
7FFVT2D	1 3/8"Z21					
7FFVT2C	1 3/4"Z6	168				
7FFVT2E	1 3/4"Z20					
8FFVT2	1 3/8"Z6	162				
8FFVT2D	1 3/8"Z21					
8FFVT2C	1 3/4"Z6	168				
8FFVT2E	1 3/4"Z20					

FRICITION TORQUE LIMITER



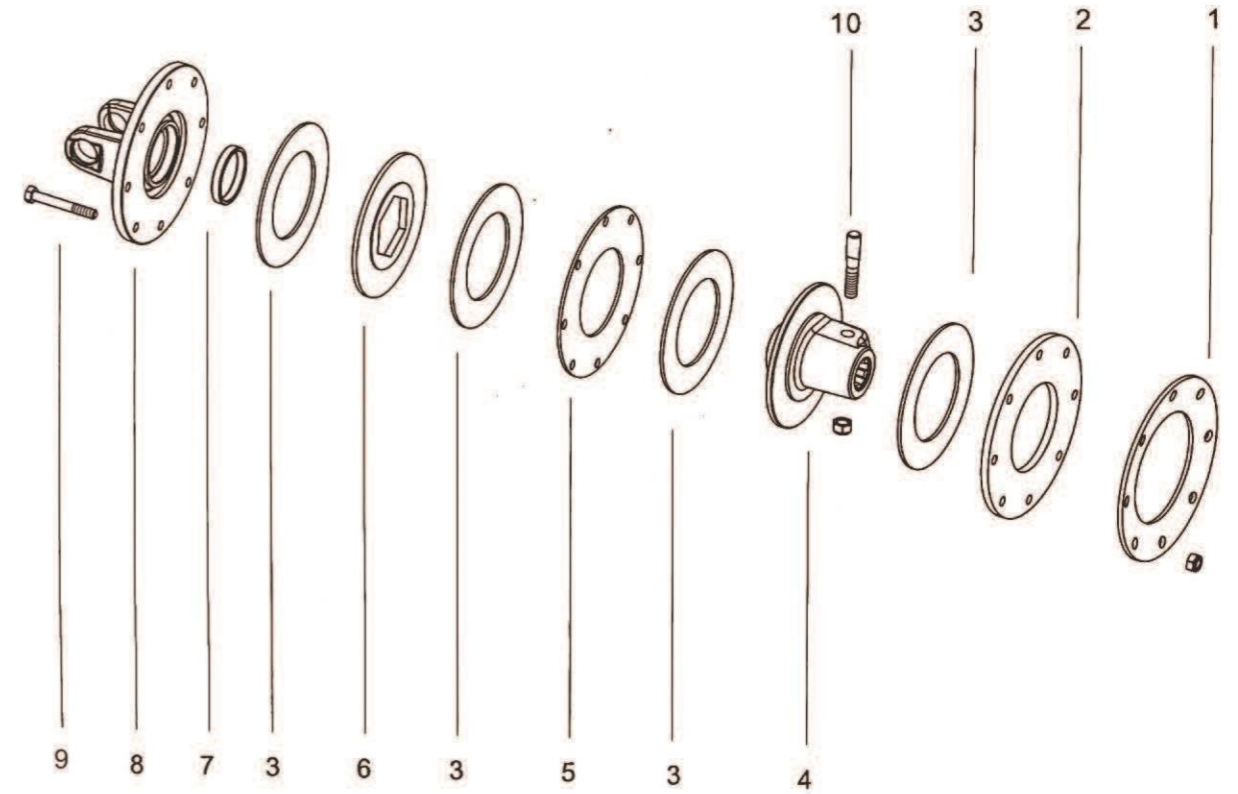
No.	Description	Notes
1	Belleville spring	
2	Pressure plate	
3	Friction discs	Qty.=2
4	Hub	
5	Complete bolt	Qty.=2
6	Bushing	
7	Flanged yoke	
8	Complete bolt	Qty.=8

FRICITION TORQUE LIMITER



Series	Max Torque(nm)	Friction Disc	Spline	A(mm)	B(mm)	C(mm)
6FFT4	1600	Φ160	1 3/8"Z6	172	30.5	Φ200
6FFT4D			1 3/8"Z21			
6FFT4C			1 3/4"Z6			
6FFT4E			1 3/4"Z20			
7FFT4	2000	Φ160	1 3/8"Z6	177	30.5	Φ200
7FFT4D			1 3/8"Z21			
7FFT4C			1 3/4"Z6			
7FFT4E			1 3/4"Z20			
7NFFT4	2000	Φ160	1 3/8"Z6	172	30.5	Φ200
7NFFT4D			1 3/8"Z21			
7NFFT4C			1 3/4"Z6			
7NFFT4E			1 3/4"Z20			
8FFT4	2000	Φ160	1 3/8"Z6	177	30.5	Φ200
8FFT4D			1 3/8"Z21			
8FFT4C			1 3/4"Z6			
8FFT4E			1 3/4"Z20			

FRICITION TORQUE LIMITER



No.	Description	Notes
1	Belleisle spring	
2	Pressure plate	
3	Friction discs	Qty.=4
4	Hub	
5	Pressure plate	
6	Hexagon board	
7	Bushing	
8	Flanged yoke	
9	Complete bolt	Qty.=8
10	Taper pin for hub	With nuts