

1710 W EISENHOWER BLVD
UNIT 5
LOVELAND, CO 80537



Space Available

Unit 5 | 952 SF

Lease Rate

\$14.00 / SF NNN

NNN Rate

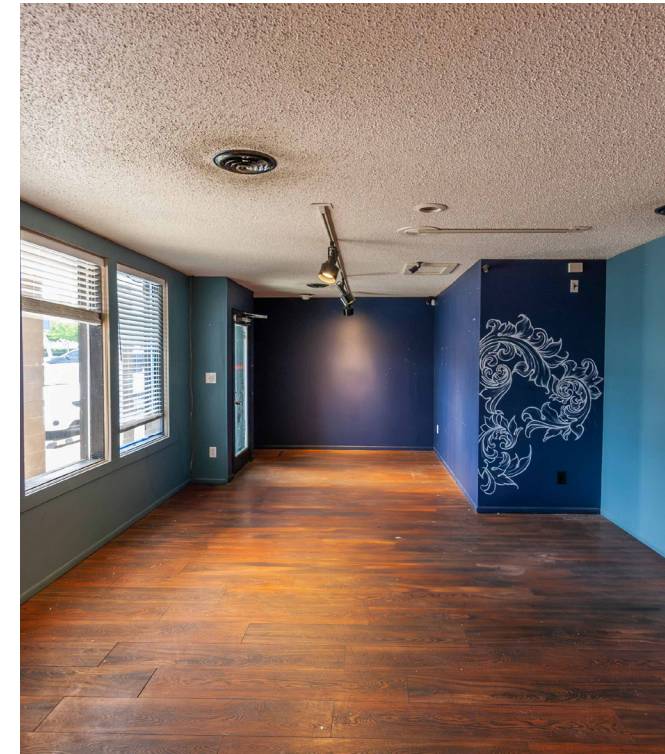
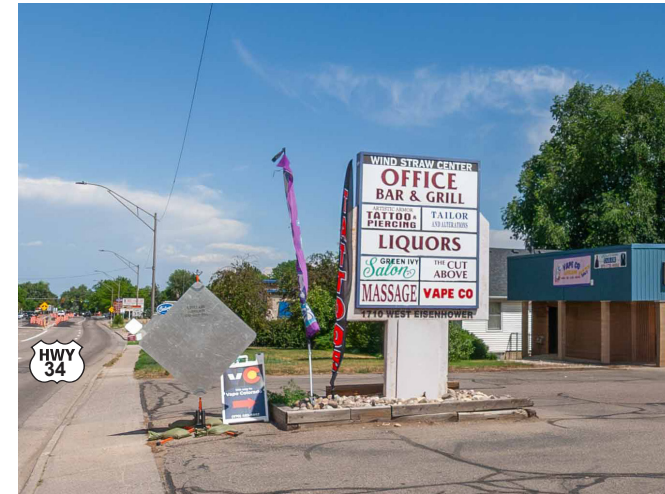
\$7.32/SF
(*2025 estimate)

RETAIL SPACE WITH FRONTAGE ON HIGHWAY 34

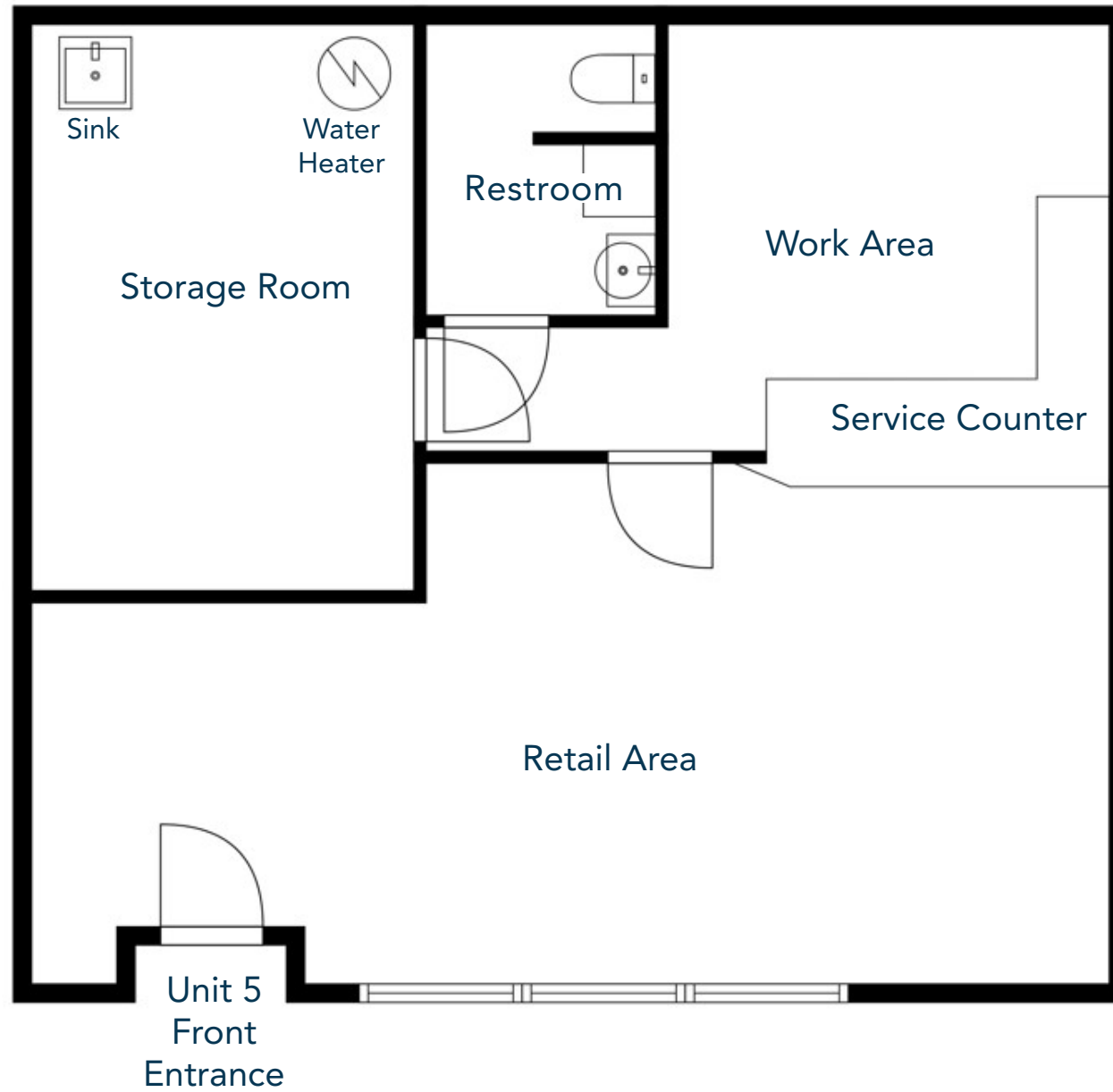
- Located in the Windstraw Shopping Center, Unit 5 features a retail area, a service counter, a private restroom, and a secure storage room with a sink.
- Centrally located on high-traffic road that leads to Estes Park.
- Approximately 25,198 VPD on Eisenhower Boulevard (source: CoStar).
- Many restaurants, retail shops, and local services nearby.
- Building and monument signage available.
- Abundance of on-site parking.



PROPERTY PHOTOS



UNIT 5 FLOORPLAN



AERIAL MAP



CONTACT: David Katz, CCIM • 970-481-5808 • dkatz@waypointRE.com
Jack Chunko • 970-213-5063 • jchunko@waypointRE.com



DAVID KATZ / JACK CHUNKO

125 S Howes Street, Suite 500, Fort Collins, CO 80521 • 970-632-5050 • www.waypointRE.com

The information contained in this offering has been obtained from sources believed to be reliable; however, the accuracy cannot be guaranteed. All potential buyers and/or tenants are hereby advised to perform their own due diligence and independently verify all of the information set forth herein.