

1710 W EISENHOWER BLVD
LOVELAND, CO 80537



waypoint
REAL ESTATE

Space Available

Unit 3 | 465 SF

Unit 5 | 952 SF

Unit 6 | 756 SF

Lease Rate

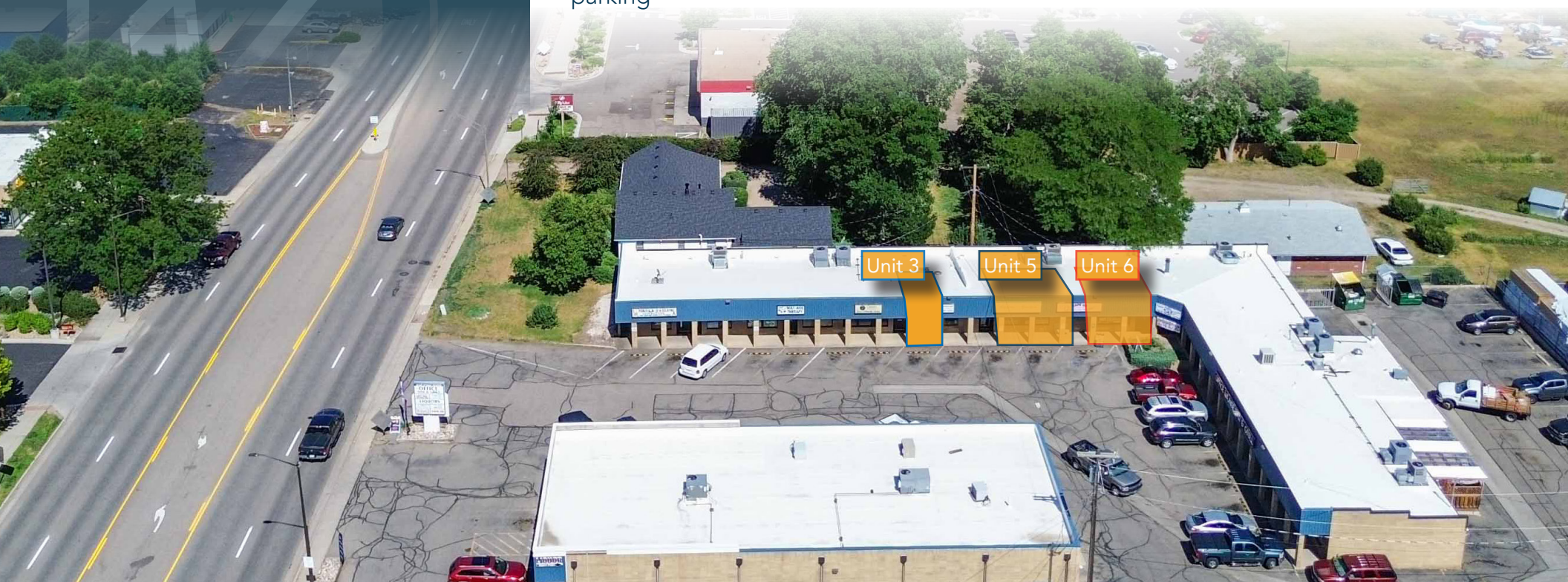
\$14.00 / SF NNN

NNN Rate

\$9.14/SF
(*2026 estimate)

RETAIL SPACES WITH FRONTAGE ON HIGHWAY 34

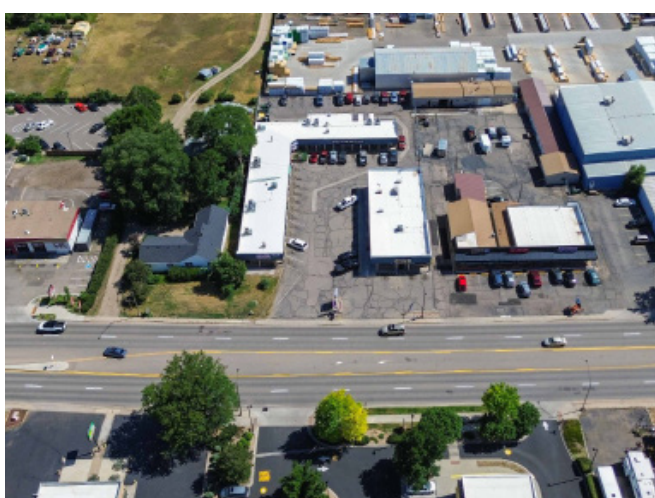
- Unit 3: Retail space, workstation, private restroom, and secure storage room with sink
- Unit 5: Retail area, service counter, private restroom, and secure storage room with sink
- Unit 6: Retail area, service/workstation, private restroom, and secure storage room
- Located in Windstraw Shopping Center on high-traffic Eisenhower Blvd (25,198 VPD)
- Surrounded by restaurants, retail, and services with building/monument signage and on-site parking



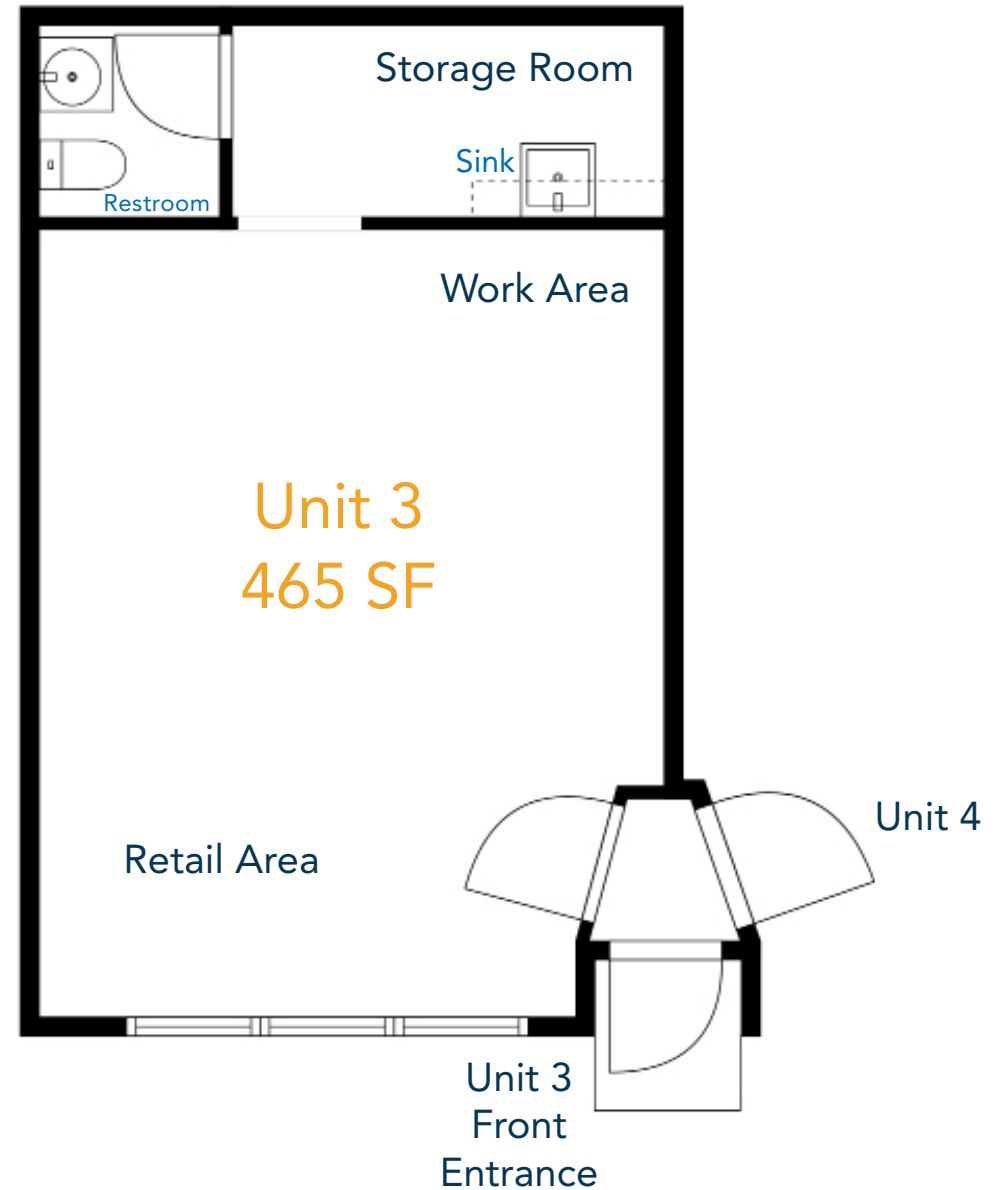
Lake Loveland

Unit 3
Unit 5
Unit 6

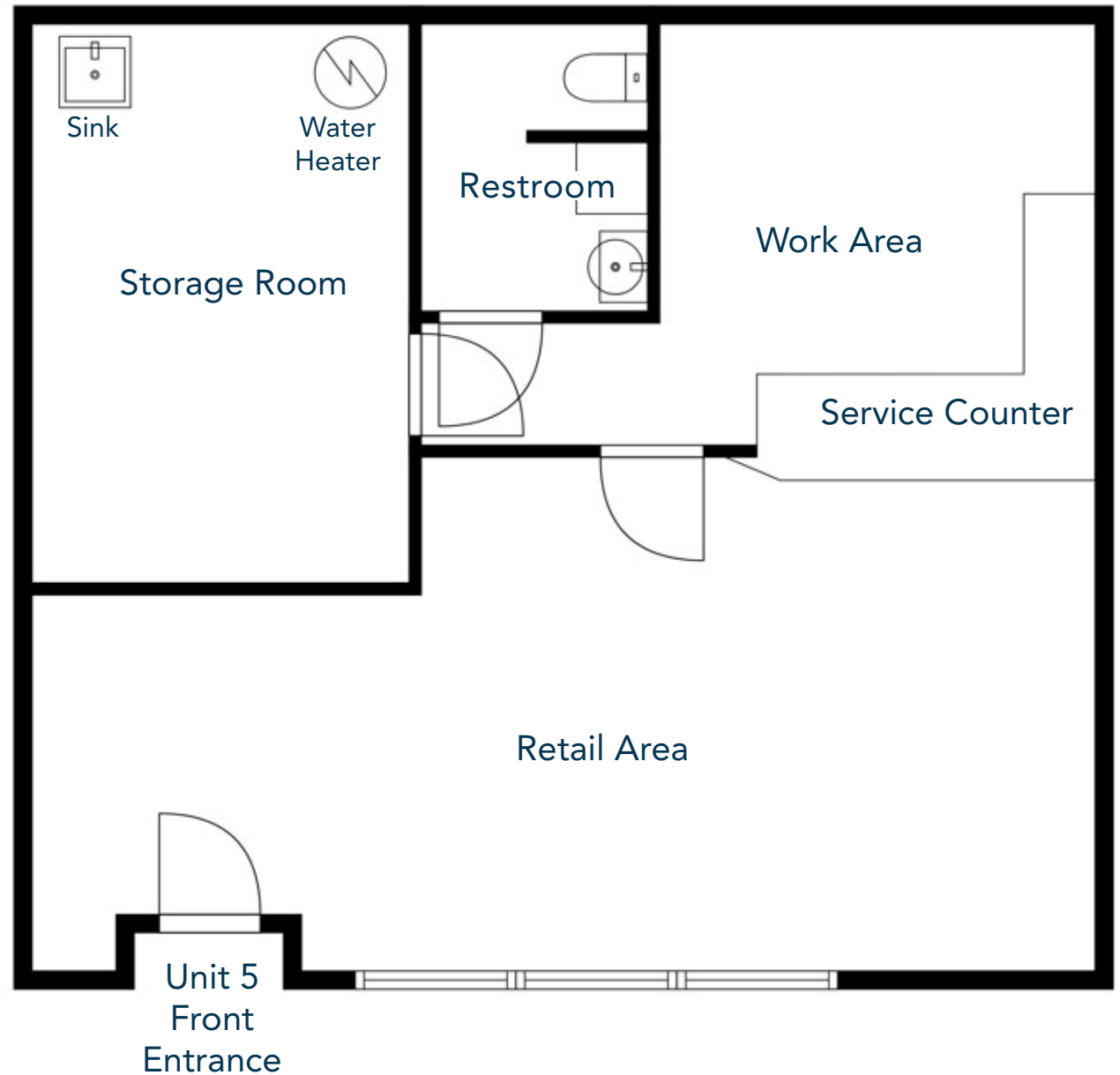
HWY 34



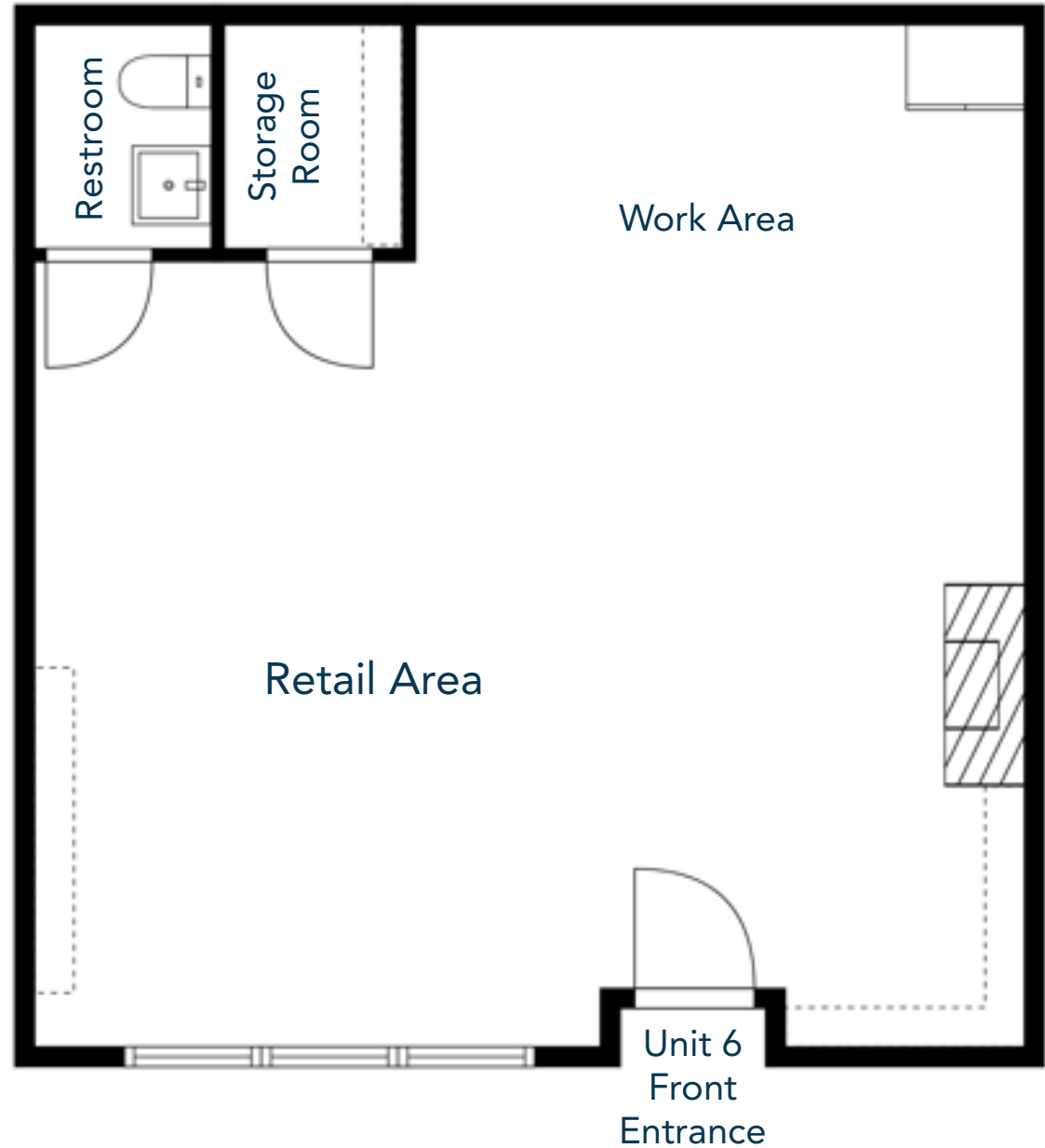
UNIT 3 PHOTOS & FLOORPLAN



UNIT 5 PHOTOS & FLOORPLAN



UNIT 6 PHOTOS & FLOORPLAN



AERIAL MAP



CONTACT: David Katz, CCIM • 970-481-5808 • dkatz@waypointRE.com
Jack Chunko • 970-213-5063 • jchunko@waypointRE.com



DAVID KATZ / JACK CHUNKO

125 S Howes Street, Suite 500, Fort Collins, CO 80521 • 970-632-5050 • www.waypointRE.com

The information contained in this offering has been obtained from sources believed to be reliable; however, the accuracy cannot be guaranteed. All potential buyers and/or tenants are hereby advised to perform their own due diligence and independently verify all of the information set forth herein.