

1738 W EISENHOWER BLVD
LOVELAND, CO 80537

Additional
Detached Garage Spaces
(10' x 20')



Space Available

1,269 SF

Lease Rate

\$10.00 / SF NNN

NNN Rate

\$7.87/SF*

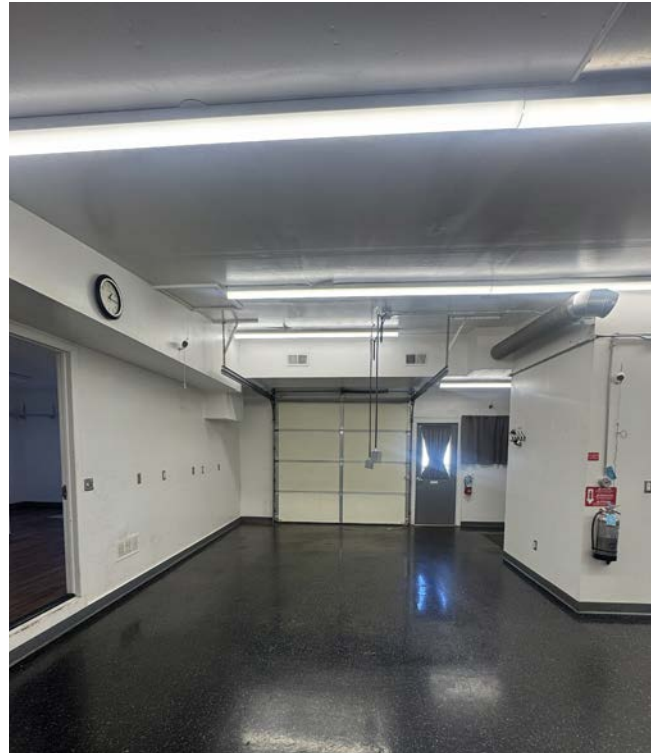
*2026 est.

INDUSTRIAL / FLEX SPACE WITH OPTIONAL DETACHED GARAGE SPACES

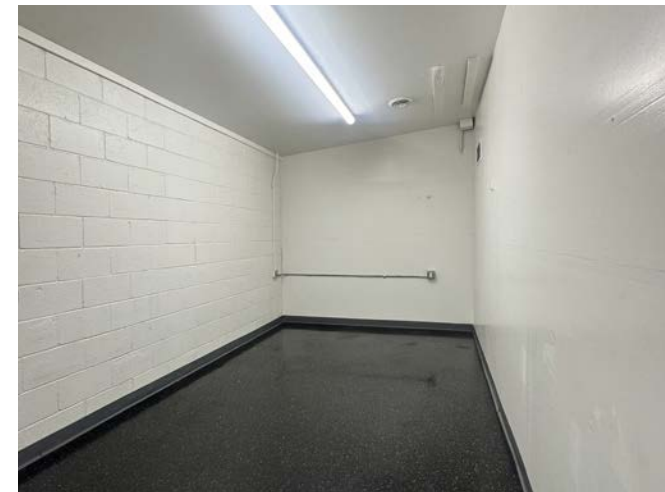
- (1) 8' x 10' overhead door for easy access
- Detached 10' x 20' garage units available, contact broker for details
- Secure fenced-in shared parking with gated access
- 8 parking spaces for work trucks
- Water included in NNN; gas & electric paid by tenant

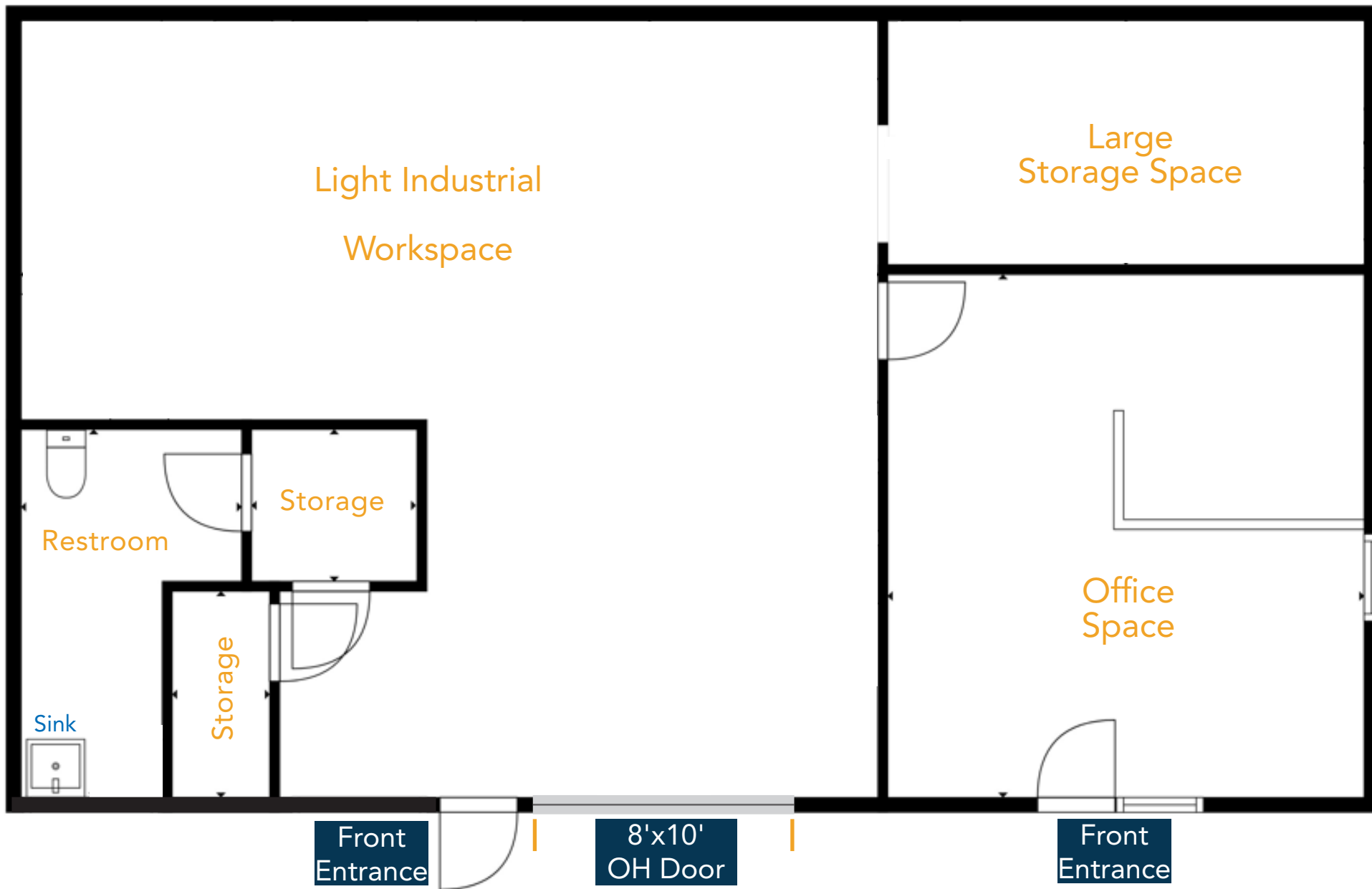


PROPERTY PHOTOS



Additional Garage Spaces





AERIAL MAP



CONTACT: David Katz, CCIM • 970-481-5808 • dkatz@waypointRE.com
Jack Chunko • 970-213-5063 • jchunko@waypointRE.com



DAVID KATZ, CCIM / JACK CHUNKO

125 S Howes Street, Suite 500, Fort Collins, CO 80521 • 970-632-5050 • www.waypointRE.com

The information contained in this offering has been obtained from sources believed to be reliable; however, the accuracy cannot be guaranteed. All potential buyers and/or tenants are hereby advised to perform their own due diligence and independently verify all of the information set forth herein.