



2026 WATERWORKS PRODUCTS



# TABLE OF CONTENTS

Flange Packs.....	2
Gaskets.....	4
Flanged Bolt Sets .....	6
MJ Bolt & Gaskets Sets .....	8
Flange Insulation Kits .....	9
Butterfly Valve Cap Screw Sets.....	10
Dug Lugs, Washers & Anode Caps.....	11
Valves .....	11
Pipe Inserts .....	11
Electrofusion.....	11
Water Tubing .....	12
Custom Fabrication.....	13
Meter Flanges, Companion Flanges & Flange Kits .....	14
Meter Couplings & Bushings .....	15
Meter Flange Gaskets & Bolt Sets .....	15
Meter Washers .....	16
Hex Nuts, Bolts & Washers .....	17
All Thread Rod & Rod Coupling Nuts.....	18
Stainless Steel Manhole Straps .....	18
ASTM A242 Bent Eye Bolts .....	18
Fire Hydrant Adapters.....	19
Marking & Locating Products.....	22
Magnetized Tracer Stations .....	23
Miscellaneous.....	23
Marking Tape.....	24
Copper Clad Tracer Wire.....	25
Wire Connectors.....	25
Polyethylene Encasement for Ductile Iron Pipe.....	26
Polywrap Tape .....	26
Corrosion Protection Products & High Performance Tapes .....	27
Digging & Striking Tools.....	28
Ductile Iron Valves.....	30
Tubing Copper .....	36



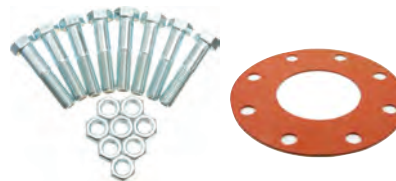
## FLANGE PACKS

Not restricted to sizes shown, other sizes available upon request. Other gasket materials available: Black SBR, Non-asbestos, Cloth Inserted, Nitrile, Neoprene, EPDM, Viton, and Teflon. Xylan coating can be applied per customer specifications.



### 150# PLAIN FINISH W/RED RUBBER FULL FACE 1/8" GASKET

ITEM	SIZE	MASTER
19178	2"	10
19180	2-1/2"	10
19182	3"	10
19184	4"	10
19186	5"	10
19188	6"	10
19191	8"	5
19193	10"	5
19195	12"	5
19196	14"	1
19197	16"	1
19198	18"	1
19199	20"	1
19200	24"	1



### 150# ZINC PLATED W/RED RUBBER FULL FACE 1/8" GASKET

ITEM	SIZE	MASTER
19267	2"	10
19269	2-1/2"	10
19271	3"	10
19275	4"	10
19277	5"	10
19279	6"	10
19282	8"	5
19284	10"	5
19287	12"	5
19288	14"	1
19289	16"	1
19290	18"	1
19291	20"	1
19292	24"	1



### 150# GRADE 5 FINISH W/RED RUBBER FULL FACE 1/8" GASKET

ITEM	SIZE	MASTER
19096	2"	10
19097	2-1/2"	10
19098	3"	10
19099	4"	10
19100	5"	10
19101	6"	10
19102	8"	5
19103	10"	5
19104	12"	5
19105	14"	1
19106	16"	1
19020	18"	1
19107	20"	1
19108	24"	1



### 150# 304 STAINLESS W/RED RUBBER RING 1/8" GASKET

ITEM	SIZE	MASTER
2"	40412	10
2-1/2"	42799	10
3"	39390	10
4"	33798	10
5"	42798	10
6"	33799	10
8"	33800	5
10"	42800	5
12"	35843	5
14"	42801	1



## FLANGE PACKS



150# 304 STAINLESS W/RED RUBBER FULL FACE 1/8" GASKET		
ITEM	SIZE	MASTER
19042	2"	10
19044	2-1/2"	10
19046	3"	10
19047	4"	10
19049	5"	10
19051	6"	10
19054	8"	5
19056	10"	5
19058	12"	5
19059	14"	1
19060	16"	1
19061	18"	1
19062	20"	1
19063	24"	1



150# 316 STAINLESS W/RED RUBBER FULL FACE 1/8" GASKET		
ITEM	SIZE	MASTER
19074	2"	10
19075	2-1/2"	10
19076	3"	10
19077	4"	10
19078	5"	10
19079	6"	10
19080	8"	5
19082	10"	5
19083	12"	5
19084	14"	1
19085	16"	1
19086	18"	1
19087	20"	1
19088	24"	1



150# PLAIN FINISH W/RED RUBBER RING 1/8" GASKET		
ITEM	SIZE	MASTER
2"	19206	10
2-1/2"	19207	10
3"	19208	10
4"	19209	10
5"	19210	10
6"	19211	10
8"	19212	5
10"	19213	5
12"	19214	5



150# ZINC PLATED W/RED RUBBER RING 1/8" GASKET		
ITEM	SIZE	MASTER
1-1/4"	19297	10
2"	19299	10
2-1/2"	19300	10
3"	19301	10
4"	19302	10
5"	19303	10
6"	19304	10
8"	19305	5
10"	19306	5
12"	19307	5



## GASKETS



### 150# 1/16" RED RUBBER FULL FACE GASKETS

ITEM	SIZE
16421	1/2"
16422	3/4"
16423	1"
16424	1-1/4"
16425	1-1/2"
16426	2"
16427	2-1/2"
16428	3"
16429	4"
16430	5"
16431	6"
16432	8"
16433	10"
16434	12"
16435	14"
16436	16"
16437	18"
16438	20"
16439	24"
22387	30"
16440	36"

### 150# 1/8" RED RUBBER FULL FACE GASKETS

ITEM	SIZE
16442	1/2"
16443	3/4"
16444	1"
16445	1-1/4"
16446	1-1/2"
16447	2"
16448	2-1/2"
16449	3"
16450	4"
16451	5"
16452	6"
16453	8"
16454	10"
16455	12"
16456	14"
16458	16"
16460	18"
16461	20"
16462	24"
16463	30"
16464	36"
16465	42"
16466	48"
16467	54"
16468	60"
22388	66"
22389	72"

### 300# 1/16" RED RUBBER FULL FACE GASKETS

ITEM	SIZE
22874	1/2"
22875	3/4"
22876	1"
22877	1-1/4"
22878	1-1/2"
22879	2"
22371	2-1/2"
16441	3"
22372	4"
22373	5"
22374	6"
22375	8"
22376	10"
22377	12"
22880	14"
22881	16"
22882	18"
22883	20"
22884	24"

### 300# 1/8" RED RUBBER FULL FACE GASKETS

ITEM	SIZE
22885	1/2"
22886	3/4"
22887	1"
22888	1-1/4"
22889	1-1/2"
16469	2"
16470	2-1/2"
16471	3"
16472	4"
22369	5"
16473	6"
16474	8"
22370	10"
16475	12"
16476	14"
16477	16"
16478	18"
20184	20"
16479	24"
22378	30"
22379	36"
22380	42"
16480	48"



## GASKETS



### 150# 1/8" RED RUBBER RING GASKETS

ITEM	SIZE
16511	1/2"
16512	3/4"
16513	1"
16514	1-1/4"
16515	1-1/2"
16516	2"
16517	2-1/2"
16518	3"
16519	4"
16520	5"
16521	6"
16522	8"
16523	10"
16524	12"
16525	14"
16526	16"
16527	18"
16528	20"
16529	24"
16530	30"
22381	36"
22382	42"
16531	48"
16532	54"

### 300# 1/8" RED RUBBER RING GASKETS

ITEM	SIZE
22909	1/2"
22910	3/4"
22911	1"
22912	1-1/4"
22913	1-1/2"
16533	2"
22914	2-1/2"
16534	3"
16535	4"
22915	5"
16536	6"
16537	8"
22916	10"
22917	12"
22918	14"
22919	16"
22920	18"
22921	20"
22922	24"

### 150# 1/16" RED RUBBER RING GASKETS

ITEM	SIZE
16492	1/2"
16493	3/4"
16494	1"
16495	1-1/4"
16496	1-1/2"
16497	2"
16498	2-1/2"
16499	3"
16500	4"
16501	5"
16502	6"
16503	8"
16504	10"
16505	12"
16506	14"
16507	16"
16508	18"
16509	20"
16510	24"

### 300# 1/16" RED RUBBER RING GASKETS

ITEM	SIZE
22890	1/2"
22891	3/4"
22892	1"
22893	1-1/4"
22894	1-1/2"
22895	2"
22896	2-1/2"
22897	3"
22898	4"
22899	5"
22900	6"
22901	8"
22902	10"
22903	12"
22904	14"
22905	16"
22906	18"
22907	20"
22908	24"



## FLANGE BOLT SETS All sets are for ductile to ductile



### 150# FLANGE BOLT SETS PLAIN FINISH A-307 GRADE A

ITEM	SIZE	MASTER
18822	1/2"	50
18823	3/4"	50
18824	1"	50
18825	1-1/4"	50
18826	1-1/2"	50
18827	2"	50
18830	2-1/2"	50
18830	3"	50
18833	4"	20
18835	5"	10
18835	6"	10
18843	8"	10
18850	10"	1
18850	12"	1
18855	14"	1
18858	16"	1
18861	18"	1
18868	20"	1
18876	24"	1
18887	30"	1
18896	36"	1
18904	42"	1

### 150# FLANGE BOLT SETS ZINC PLATED FINISH A-307 GRADE A

ITEM	SIZE	MASTER
18936	1/2"	50
18937	3/4"	50
18938	1"	50
18939	1-1/4"	50
18940	1-1/2"	50
18941	2"	50
18943	2-1/2"	50
18943	3"	50
18944	4"	20
18946	5"	10
18946	6"	10
18947	8"	10
18950	10"	1
18950	12"	1
18954	14"	1
18955	16"	1
18957	18"	1
18961	20"	1
18964	24"	1
18971	30"	1
18973	36"	1
18975	42"	1

### 150# FLANGE BOLT SETS PLAIN FINISH A-307 GRADE B

ITEM	SIZE	MASTER
18830	3"	50
18833	4"	20
18835	5"	10
18835	6"	10
18843	8"	10
18850	10"	1
18850	12"	1



## FLANGE BOLT SETS



150# FLANGE BOLT SETS GRADE 5		
ITEM	SIZE	MASTER
18635	1-1/2"	50
18636	2"	50
18637	2-1/2"	50
18637	3"	50
18638	4"	20
18640	5"	10
18640	6"	10
18643	8"	1
18643	12"	1
18644	14"	1
18645	16"	1
18646	18"	1
18648	20"	1
18649	24"	1

150# FLANGE BOLT SET 304 STAINLESS		
ITEM	SIZE	MASTER
18686	1/2"	50
18687	3/4"	50
18688	1"	50
18689	1-1/4"	50
18690	1-1/2"	50
18691	2"	50
18693	2-1/2"	50
18693	3"	50
18695	4"	20
18700	5"	10
18700	6"	10
18703	8"	10
18708	10"	1
18708	12"	1
18711	14"	1
18712	16"	1
18718	18"	1
18723	20"	1
18728	24"	1

150# FLANGE BOLT SET 316 STAINLESS		
ITEM	SIZE	MASTER
18762	1/2"	50
18763	3/4"	50
18764	1"	50
18765	1-1/4"	50
18766	1-1/2"	50
18767	2"	50
18769	2-1/2"	50
18769	3"	50
18770	4"	20
18772	5"	10
18772	6"	10
18773	8"	10
18775	10"	1
18775	12"	1
18777	14"	1
18778	16"	1
18781	18"	1
18783	20"	1
18787	24"	1

**NEED A SPECIAL SIZE OR CONFIGURATION? NEED A DIFFERENT FINISH OR GRADE?**

Give us a call, we can make a kit for your special need! Allow 24 - 48 hours production time to build 18" - 48" bolt sets. Xylan coating can be applied per customer specifications. Domestic available upon request.



# MJ BOLT & GASKET SETS

ASTM A242 & Stainless Steel Per AWWA Specifications



## MJ BOLT SETS PLAIN W/GASKET

ITEM	SIZE
19495	3"
19498	4"
19501	6"
19504	8"
19506	10"
19508	12"
19510	14"
19511	16"
19513	18"
19514	20"
19515	24"
19517	30"
19518	36"
19519	42"
19520	48"

## J BOLT SETS Xylan 1014 W/GASKET

ITEM	SIZE
19521	3"
19522	4"
19523	6"
19524	8"
19525	10"
19526	12"
19527	14"
19528	16"
19529	18"
19530	20"
19531	24"
19532	30"
19533	36"
19534	42"
19535	48"

## MJ BOLT SETS 304 STAINLESS W/GASKET

ITEM	SIZE
19496	3"
19499	4"
19502	6"
19505	8"
19507	10"
19509	12"
22188	14"
19512	16"
22189	18"
22190	20"
19516	24"
22191	30"
22192	36"
22193	42"
22194	48"

## MJ TRANSITION BOLT SETS PLAIN W/GASKET

ITEM	SIZE
15574	3"
15575	4"
15576	6"
15577	8"
15578	10"
15579	12"

## MJ TRANSITION BOLT SETS Xylan W/GASKET

ITEM	SIZE
19542	3"
19543	4"
22868	6"
22869	8"
22870	10"
22871	12"

## MJ BOLT SETS 316 STAINLESS W/GASKET

ITEM	SIZE
19494	3"
19497	4"
19500	6"
19503	8"
20467	10"
20468	12"
19563	14"
20469	16"
20470	18"
19565	20"
20471	24"
20941	30"
20942	36"
20943	42"
22259	48"



## FLANGE INSULATION KITS

Standard packaging is boxed. Polybag packaging available upon request. Bulk tee bolts by the bucket also available in ASTM A242 weathering steel, type 304 and type 316 stainless steel.

- Domestic available upon request
- Other sleeves and washers by request
- Xylan coating can be applied per customer specifications



Optional Gasket Shown.  
Available upon request  
in various materials.

### 150# INSULATION KITS POLY SLEEVES & DOUBLE PHENOLIC AND ZINC WASHERS

ITEM	SIZE
22275	1/2"
15211	3/4"
15212	1"
22276	1-1/4"
15216	1-1/2"
15219	2"
15222	2-1/2"
15225	3"
15228	4"
15232	5"
15234	6"
15239	8"
15243	10"
15246	12"
15249	14"
15250	16"
15252	18"
15255	20"
15256	24"
15257	30"
15259	36"
15260	42"
15261	48"
15263	54"
15266	60"



## BUTTERFLY VALVE CAP SCREW SETS

(LUG STYLE) SINGLE SIDE PLAIN		
ITEM	SIZE	MASTER
18446	2"	50
18446	2-1/2"	50
18481	3"	50
18452	4"	50
18456	5"	25
18456	6"	25
18458	8"	25
18460	10"	10
18462	12"	10
18465	14"	1
18468	16"	1
18471	18"	1
18473	20"	1
18475	24"	1

(LUG STYLE) DOUBLE SIDE PLAIN		
ITEM	SIZE	MASTER
18447	2"	50
18447	2-1/2"	50
18447	3"	50
18451	4"	10
18455	5"	10
18455	6"	10
18457	8"	10
18459	10"	1
18461	12"	1
18463	14"	1
18467	16"	1
18469	18"	1
18472	20"	1
18474	24"	1



Zinc and 304 Stainless also available by request

WAFER STYLE	
ITEM	SIZE
19970	2"
19971	2-1/2"
19973	3"
19974	4"
19976	5"
19977	6"
19979	8"
19981	10"
19983	12"

(LUG STYLE) SINGLE SIDE A-307 ZINC (PVC)		
ITEM	SIZE	MASTER
24527	2"	50
41616	2-1/2"	50
24528	3"	50
32649	4"	10
47456	5"	10
24529	6"	10
41614	8"	10
41613	10"	1
32325	12"	1





## DUC LUGS, WASHERS & ANODE CAPS

DUC LUGS, LUG WASHERS, & ANODE CAPS	
ITEM	SIZE
55218	3/4" Duc Lug
55219	3/4" Lug Washer
37095	5/8"-11, Zinc Anode Cap
36564	3/4"-11, Zinc Anode Cap



## VALVES

LEAD-FREE FULLPORT BALL VALVES	
ITEM	SIZE
700-200-00205	1/4" NPT
700-200-00210	3/8" NPT
700-200-00215	1/2" NPT
700-200-00220	3/4" NPT
700-200-00225	1" NPT
700-200-00230	1-1/4" NPT
700-200-00235	1-1/2" NPT
700-200-00240	2" NPT
700-200-00245	2-1/2" NPT
700-200-00250	3" NPT
700-200-00252	4" NPT



## PIPE INSERTS

PIPE INSERTS	
ITEM	SIZE
STAINLESS STEEL	
12970	3/4" CTS SS Stiffener
12967	1" CTS SS Stiffener
12968	1-1/2" CTS SS Stiffener
12969	2" CTS SS Stiffener
PLASTIC	
19953	1" CTS Plastic Stiffener
19954	3/4" CTS Plastic Stiffener



## RITMO AMERICA ELECTROFUSION



ELEKTRA S, M, & XL



ELEKTRA 500 & 1000



ELEKTRA LIGHT



## WATER TUBING

### PE-4710 BLACK

ITEM	SIZE	SDR	PSI	PALLET
16111	3/4" CTS X 100'	SDR9	250	2000
16112	3/4" CTS X 500'	SDR9	250	5000
16113	1" CTS X 100'	SDR9	250	2000
16115	1" CTS X 300'	SDR9	250	3300
16116	1-1/4" CTS X 100'	SDR9	250	1500
16117	1-1/4" CTS X 300'	SDR9	250	2700
16118	1-1/2" CTS X 100'	SDR9	250	1800
16119	1-1/2" CTS X 300'	SDR9	250	2700
16120	2" CTS X 100'	SDR9	250	1500
16121	2" CTS X 300'	SDR9	250	2100



Other sizes and types of tubing available

### PE-4710 BLUE

ITEM	SIZE	SDR	PSI	PALLET
16134	3/4" CTS X 100'	SDR9	250	2000
16136	1" CTS X 100'	SDR9	250	2000
16137	1" CTS X 300'	SDR9	250	3300
22443	1-1/4" CTS X 100'	SDR9	250	1500
16138	1 1/2" CTS X 100'	SDR9	250	1800
16139	2" CTS X 100'	SDR9	250	1500

### ENDOTRACE PE-4710

ITEM	SIZE	SDR	PSI	PALLET
16144	3/4" CTS X 100'	SDR9	250	2000
16145	1" CTS X 100'	SDR9	250	2000
22872	1-1/4" CTS X 100'	SDR9	250	1500
22599	1-1/2" CTS X 100'	SDR9	250	1700
16146	2" CTS X 100'	SDR9	250	1500
37511	2" IPS X 100'	SDR11	250	1600



## CUSTOM FABRICATION

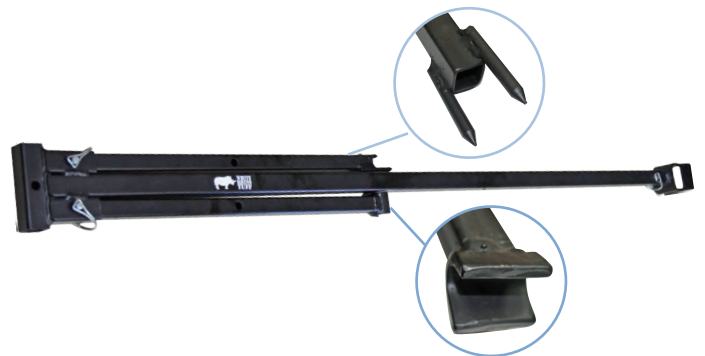
VALVE STEM EXTENSIONS DROP & LOCK AND NON-LOCKING		
ITEM	SIZE	MASTER
17855	1	17813
7856	1.5	17814
17857	2	17815
17858	2.5	17816
17859	3	17817
17861	3.5	17818
17863	4	17819
17865	4.5	17820
17866	5	17821
17869	5.5	17822
17870	6	17823
17874	6.5	17824
17877	7	17825
17878	7.5	17826
17880	8	17827
17882	8.5	17828
17884	9	17829
17885	9.5	17830
17886	10	17831



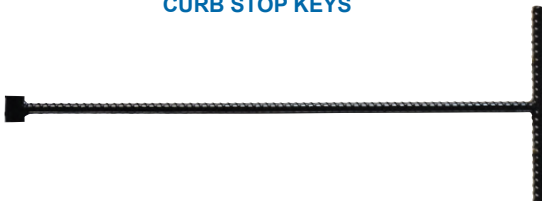
Other sizes and special types can be manufactured per your specifications

VALVE WRENCHES	
ITEM	DESCRIPTION
18421	Valve Wrench 3'-6' Combo
18422	Valve Wrench 3'-6'
18423	Valve Wrench 5.5'-9.5' Combo
18419	Valve Wrench 5.5'-9.5'

### COMBO ATTACHMENTS



### CURB STOP KEYS



### METER BOX LID KEYS





## METER FLANGES, COMPANION FLANGES, & FLANGE KITS

### BRASS METER FLANGES

ITEM ID	SIZE	DESCRIPTION
40368	1-1/2"	FeMale NPT, Brass Meter Flange
19679	1-1/2"	Male NPT, Brass Meter Flange
40535	1-1/2"	Double Brass Meter Flange Kit
40536	1-1/2"	Single Brass Meter Flange Kit
12051	1-1/2"	Double Brass Meter Flange Kit
40369	2"	Brass Meter Flange
19686	2"	Male NPT, Brass Meter Flange
40537	2"	Double Brass Meter Flange Kit
40538	2"	Single Brass Meter Flange Kit

- Kits include zinc bolts & nuts and drop-in gaskets
- Oval gaskets and SS bolts and nuts available
- All meter flanges are certified lead free - NSF-61-G
- Domestic & heavy duty flanges available



### BRASS COMPANION FLANGES

ITEM ID	SIZE	DESCRIPTION
12102	2"	Brass Companion Flange Kit
12054	2"	Double Brass Companion Flange Kit
12103	3"	Brass Companion Flange Kit
12059	3"	Double Brass Companion Flange Kit
12104	4"	Brass Companion Flange Kit
12061	4"	Double Brass Companion Flange Kit
12105	6"	Brass Companion Flange Kit
12068	6"	Double Brass Companion Flange Kit

### CAST IRON METER FLANGES

ITEM ID	SIZE	DESCRIPTION
19677	1-1/2"	FeMale NPT, Cast Iron Meter Flange
12342	1-1/2"	Single Cast Iron Meter Flange Kit
12052	1-1/2"	Double Cast Iron Meter Flange Kit
19684	2"	2" Cast Iron Meter Flange
12057	2"	2" Double Cast Iron Meter Flange Kit
12344	2"	2" Single Cast Iron Meter Flange Kit



### CAST IRON COMPANION FLANGES

ITEM ID	SIZE	DESCRIPTION
12094	2"	Cast Iron Companion Flange Kit
12056	2"	Double Cast Iron Companion Flange Kit
12096	3"	Cast Iron Companion Flange Kit
12060	3"	Double Cast Iron Companion Flange Kit
12100	4"	Cast Iron Companion Flange Kit
12066	4"	Double Cast Iron Companion Flange Kit
12101	6"	Cast Iron Companion Flange Kit
12068	6"	Double Cast Iron Companion Flange Kit



## METER COUPLINGS & BUSHINGS

LEAD-FREE BRASS METER COUPLINGS	
ITEM ID	SIZE
19675	5/8"
45295	3/4" X 2-1/2"
19643	3/4" X 90° Elbow
19672	3/4" X 1-1/2"
19673	3/4" X 2"
19674	3/4" X 3"
42243	3/4" X 8-1/2"
10839	1" X 1-1/2"
19637	1" X 90° Elbow
19638	1" X 2"
45296	1" X 2-5/8"
19639	1-1/2" X 2-7/8"
19640	1-1/4" X 2-3/4"
19671	1" TO 1/2" Reducing
55973	1" X 8-1/2"
45297	2" X 3"



Meter couplings gaskets supplied with brass meter couplings are NSF-61 approved.

LEAD-FREE BRASS BUSHINGS	
ITEM ID	SIZE
55539	5/8" X 3/4" X 1" NPSM Threaded
55540	3/4" X 1" NPSM Threaded
35469	1-1/4" X 1" NPSM Threaded
10023	1-1/2" X 1-1/4" NPSM Threaded



## METER FLANGE GASKETS & BOLT SETS

METER FLANGE BOLT SETS		
ITEM ID	SIZE	DESCRIPTION
18525	1-1/2"	GR A Zinc
12107	1-1/2"	304SS, EPDM
12108	1-1/2"	304SS
12235	1-1/2"	Zinc
12110	1-1/2"	Double Pack - 304SS, EPDM
12299	1-1/2"	Double Pack - Zinc, EPDM
12111	1-1/2"	Double Pack - 304SS
12236	1-1/2"	Double Pack - Zinc
18528	2"	GR A Zinc
12173	2"	304SS, EPDM
12187	2"	304SS
12301	2"	Zinc
12188	2"	Double Pack - 304SS, EPDM
12190	2"	Double Pack - 304SS
12302	2"	Double Pack - Zinc



METER FLANGE GASKETS	
ITEM ID	SIZE
OVAL - EPDM	
14618	1-1/2"
14619	2"
OVAL - RED RUBBER	
14009	1-1/2"
14011	2"
DROP IN - EPDM	
15556	1-1/2"
17184	2"
DROP IN - RED RUBBER	
14000	1-1/2"
14006	2"
OVAL - CLOTH	
24365	1-1/2"
17141	2"
DROP IN - CLOTH	
20024	1-1/2"
14003	2"





## METER WASHERS

### METER COUPLINGS WASHERS - RUBBER

ITEM	SIZE	QTY
19476	5/8" X 1/32"	100
19477	5/8" X 1/16"	100
19478	5/8" X 1/8"	100
19479	3/4" X 1/32"	100
19480	3/4" X 1/16"	100
19481	3/4" X 1/8"	100
19482	1" X 1/32"	100
19483	1" X 1/16"	100
19484	1" X 1/8"	100
19884	1-1/4" X 1/8"	100
19876	1-1/4" X 1/16"	100
19848	1-1/2" X 1/16"	100
19849	1-1/2" X 1/8"	100
19887	2" X 1/16"	100
19888	2" X 1/8"	100



### WATER FLOW CUT-OFF PLUGS

ITEM	SIZE	QTY
14672	5/8" FIBER	100
14671	3/4" FIBER	100
14670	1" FIBER	100



### METER COUPLING WASHERS - CLOTH INSERT

ITEM ID	SIZE	QTY
19687	1" X 1/8"	100



### METER COUPLINGS WASHERS - FIBER

ITEM	SIZE	QTY
19467	5/8" X 1/32"	100
19468	5/8" X 1/16"	100
19469	5/8" X 1/8"	100
19470	3/4" X 1/32"	100
19471	3/4" X 1/16"	100
19472	3/4" X 1/8"	100
19473	1" X 1/32"	100
19474	1" X 1/16"	100
19475	1" X 1/8"	100
19698	1-1/2" X 1/16"	100
19700	1-1/2" X 1/32"	100
19701	1-1/2" X 1/8"	100
19702	2" X 1/16"	100
19703	2" X 1/32"	100
19825	2" X 1/8"	100



### METER COUPLING WASHERS - LEATHER

ITEM	SIZE	QTY
19846	5/8" X 1/16"	100
19847	5/8" X 1/8"	100
19844	3/4" X 1/16"	100
19845	3/4" X 1/8"	100
19826	1" X 1/16"	100
19837	1" X 1/8"	100
19841	1-1/2" X 1/8"	100
19843	2" X 1/8"	100





## HEX NUTS, BOLTS & WASHERS

FLAT WASHERS - ZINC PLATED			
ITEM	SIZE	BOX QTY	MASTER
20006	1/4"	100	5000
20007	3/8"	100	2000
20008	1/2"	100	2000
20009	5/8"	50	1000
20010	3/4"	25	500
20011	7/8"	25	500
20012	1"	25	250

304 & 316 stainless also available



FINISHED HEX NUTS - ZINC PLATED			
ITEM	SIZE	BOX QTY	MASTER
19570	1/4"	100	5000
19572	3/8"	100	2000
19573	1/2"	100	2000
19575	5/8"	50	1000
19577	3/4"	25	500
19579	7/8"	25	250
19580	1"	25	250



FENDER WASHERS - ZINC PLATED			
ITEM	SIZE	BOX QTY	MASTER
19996	1/4" X 1-1/4"	100	2000
19998	3/8" X 1-1/2"	100	2000
19999	1/2" X 2"	100	2000



BRASS HEX BOLTS AND NUTS	
ITEM	DESCRIPTION
43029	HEX BOLT 5/8-11 X 2-1/2 BRASS
18426	HEX BOLT 5/8-11 X 3 BRASS
18425	HEX BOLT 3/4 X 3-1/4 BRASS
15872	NUT 5/8-11, BRASS, FINISHED, HEX
34974	NUT 3/4-10, BRASS, FINISHED, HEX





## ALL THREAD ROD & ROD COUPLING NUTS



ALL THREAD ROD - (10 FT. LENGTHS)				
ITEM	TYPE	DIAMETER	TUBE LENGTH	MASTER LIFT LENGTH
13390	Zinc Plated	3/8"	250'	6250'
13394	Zinc Plated	1/2"	120'	3000'
13400	Zinc Plated	5/8"	80'	2000'
13411	Zinc Plated	3/4"	50'	1250'

ALL THREAD ROD - (12 FT. LENGTHS)		
ITEM	TYPE	DIAMETER
13391	304 SS	3/8"
13397	304 SS	1/2"
13412	304 SS	3/4"
13418	304 SS	7/8"
13427	304 SS	1"
13392	316 SS	3/8"
13396	316 SS	1/2"
13413	316 SS	3/4"
13419	316 SS	7/8"
13428	316 SS	1"

ROD COUPLING NUTS - ZINC PLATED		
ITEM	SIZE	QTY
16341	1/4" X 1-3/4"	100
16348	3/8" X 1-1/8"	100
16342	3/8" X 1-3/4"	100
16343	1/2" X 1-3/4"	50
16344	5/8" X 2-1/8"	25
16345	3/4" X 2-1/4"	25
16346	7/8" X 2-1/2"	10
16347	1" X 2-1/2"	10



304 & 316 stainless also available



## STAINLESS STEEL MANHOLE STRAPS

STAINLESS STEEL MANHOLE STRAPS	
ITEM	SIZE
15545	2"
15546	3"
15547	4"
15548	6"
15549	8"
15551	10"
15552	12"
15553	15"
15554	18"



## ASTM A242 BENT EYE BOLTS

ASTM A242 BENT EYE BOLTS	
ITEM	SIZE
14735	5/8" X 3-1/2"
14736	3/4" X 4"
14737	3/4" X 4-1/4"
21669	3/4" X 4-1/2"
14738	3/4" X 5"
14739	1" X 6"





## FIRE HYDRANT ADAPTERS

PIN LUG ADAPTERS	
ITEM ID	DESCRIPTION
18523	1-1/2" FeMale NPSH X 1-1/2" Male NST
18548	1-1/2" FeMale NST X 1" Male NPT
18549	1-1/2" FeMale NST X 1-1/2" Male NPT
18553	2-1/2" FeMale NST X 3/4" Male Garden Hose
18558	2-1/2" FeMale NPSH X 1-1/2" Male NPT
18564	2-1/2" FeMale NPSH X 1-1/2" Male NST
18566	2-1/2" FeMale NPT X 1-1/2" Male NST
18568	2-1/2" FeMale NST X 1" Male NPT
18569	2-1/2" FeMale NST X 1" Male NPT, No-Lead Brass
18572	2-1/2" FeMale NST X 1-1/2" Male NPSH
18575	2-1/2" FeMale NST X 1-1/2" Male NPT
18577	2-1/2" FeMale NST X 1-1/2" Male NPT, No-Lead Brass
18579	2-1/2" FeMale NST X 1-1/2" Male NST, No-Lead Brass
18580	2-1/2" FeMale NST X 2" Male NPT, No-Lead Brass
18586	2-1/2" FeMale NST X 2" Male NST
18592	2-1/2" FeMale NST X 2" Male NST, No-Lead Brass
18593	2-1/2" FeMale NST X 3/4" Male Garden Hose, No-Lead Brass
18594	2-1/2" FeMale NST X 3/4" Male NPT
18595	2-1/2" FeMale NST X 3/4 Male NPT, No-Lead Brass
18597	3" FeMale NPT X 2-1/2" Male NST



CROWFOOT COUPLINGS	
ITEM ID	DESCRIPTION
11219	3/4" FeMale NPT, 2 Lug Universal Crowfoot

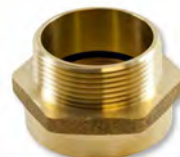




## FIRE HYDRANT ADAPTERS

### HEX NIPPLE ADAPTERS

ITEM	DESCRIPTION
<b>FEMALE X MALE HEX NIPPLES</b>	
19371	1" Female NPT X 1-1/2" Male NST
19376	1-1/2" Female NPSH X 1-1/2" Male NPSH
19379	1-1/2" Female NPT X 1" Male NPT
19380	1-1/2" Female NPT X 1-1/2" Male NST
19382	1-1/2" Female NST X 1" Male NPT
19429	1-1/2" Female NST X 1-1/2" Male NPT
19437	2" Female NPT X 2-1/2" Male NST
19438	2-1/2" Female NPSH X 2-1/2" Male NST
19439	2-1/2" Female NPT X 1-1/2" Male NST
19443	2-1/2" Female NPT X 1-1/2" Male NST, No-Lead Brass
19448	2-1/2" Female NPT X 2-1/2" Male NST
19449	2-1/2" Female NST X 2" Male NPT
19450	2-1/2" Female NST X 2" Male NPT
19453	2-1/2" Female NST X 2-1/2" Male NPT
19454	2-1/2" Female NST X 2-1/2" Male NST
19569	3" Female NPT X 2-1/2" Male NST
19584	4" Female NST X 2-1/2" Male NST
<b>MALE X MALE HEX NIPPLES</b>	
19430	1-1/2" Male NPT X 1-1/2" Male NPST
19433	1-1/2" Male NST X 1-1/2" Male NPT
19436	1-1/2" Male NST X 1-1/2" Male NST
19458	2-1/2" Male NPT X 1-1/2" Male NST
19460	2-1/2" Male NST X 1-1/2" Male NPT
19462	2-1/2" Male NST X 2" Male NPT, No-Lead Brass
19463	2-1/2" Male NST X 2-1/2" Male NPT, No-Lead Brass
19466	2-1/2" Male NST X 2-1/2" Male NST
19486	2-1/2" Male NST X 3" Male NPT, No-Lead Brass
19591	2-1/2" Male NST X 1-1/2" Male NST
19586	4" Male NST X 4" Male NPT
19587	4-1/2" Male NST X 2-1/2" Male NST
19590	4-1/2" Male NST X 4" Male NPT
<b>FEMALE X FEMALE HEX NIPPLES</b>	
19383	1-1/2" Female NST X 1-1/2" Female NPT
19389	1-1/2" Female NST X 1-1/2" Female NST
19445	2-1/2" Female NPT X 2-1/2" Female NST





## FIRE HYDRANT ADAPTERS

HYDRANT SWIVELS	
ITEM	DESCRIPTION
<b>SWIVELS</b>	
19615	1-1/2" Female NPSH X 1-1/2" Male NPT Pin Lug 1
19624	1-1/2" Female NST X 1-1/2" Male NPT Pin Lug1
19626	2-1/2" Female NST X 2" Male NPT Pin Lug, No-Lead Brass
19635	2-1/2" Female NST X 2-1/2" Male NPT Pin Lug
19636	2-1/2" Female NST X 3" Male NPT Pin Lug, No-Lead Brass
<b>DOUBLE SWIVELS</b>	
19597	1-1/2" Female NPSH X 1-1/2" Female NPSH Pin Lug
19600	1-1/2" Female NPSH X 1-1/2" Female NST Pin Lug
19616	1-1/2" Female NPT X 1-1/2" Female NPSH Pin Lug
19621	1-1/2" Female NPT X 1-1/2" Female NST Pin Lug
19623	1-1/2" Female NST X 1-1/2" Female NST Pin Lug
19627	2-1/2" Female NST X 2-1/2" Female NPT Pin Lug
19633	2-1/2" Female NST X 2-1/2" Female NST Pin Lug



- NST: National Standard Thread
- NPT: National Pipe Tapered
- NPSH: National Pipe Straight Hose
- GHT: Garden Hose Thread

CAP AND CHAIN PIN LUG ADAPTERS	
ITEM	DESCRIPTION
18630	1-1/2" NST Pin Lug
19016	2-1/2" NST Pin Lug, No-Lead Brass
19024	4-1/2" NST Pin Lug



PLUG AND CHAIN	
ITEM	DESCRIPTION
19592	2-1/2" Male NST Plug and Chain



HYDRANT BUSHINGS	
ITEM	DESCRIPTION
18599	1-1/2" Female NST X 2" Male NST Bushing
18600	1-1/2" Female NST X 2-1/2" Male NST Bushing
18619	1-1/2" Female NPT X 2-1/2" Male Bushing
18624	2" Female NPT X 2-1/2" Male NST Bushing
18625	2-1/2" Female NST X 3" Male NPT



PUMPER NOZZEL GASKETS	
ITEM	DESCRIPTION
19892	2" ID, 3-1/2" OD, 3/16" Thick
19922	3" ID, 5-1/4" OD, 3/16" Thick



HYDRANT ADAPTER GASKETS	
ITEM	DESCRIPTION
19025	1-1/2" ID, 2" OD, 1/8" Thick
19364	2-1/2" ID, 3-1/8" OD, 1/8" Thick
19367	2-1/2" ID, 3-1/8" OD, 3/16" Thick
19368	4-1/2" ID, 5-5/8" OD, 1/4" Thick





## MARKING AND LOCATING PRODUCTS

### TRIVIEW POST MARKERS

ITEM	DESCRIPTION
30021	Green
36145	Yellow
22384	Blue



### MARKING FLAGS

ITEM	DESCRIPTION
4" x 5" x 21" Staff w/Plain - 1000/BX	
12847	Blue
12851	Green
12856	White
12858	Yellow
CALL	Orange
4" x 5" x 21" Staff w/Script - 1000//BX	
12850	Blue
12853	Green
12857	White
12859	Yellow
CALL	Orange



### 3M EMS MARKERS

ITEM	DESCRIPTION
15488	Blue Marker Balls
15486	Green Marker Balls
15483	Yellow Marker Balls
33077	Blue Near Surface Markers
42198	Green Near Surface Markers
42871	Yellow Near Surface Markers
10052	Blue Full Range Markers
10053	Green Range Range Markers
42870	Yellow Range Range Markers



### RUST-OLEUM MARKING PAINT

WATER BASED INVERTED	
ITEM	DESCRIPTION
10376	Blue
10679	Green
10377	Yellow
10380	White
10378	Orange
10680	Pink
10379	Red
SOLVENT BASED INVERTED	
10372	Blue
10672	Green
10375	White
10369	Orange
10674	Pink
10374	Red
10373	Yellow
24 CASES FFA FROM FACTORY	
10675	Banner Red Hydrant Upright



Others available

### HYDRANT MARKERS

ITEM	DESCRIPTION
12409	Markers (50/box)
12083	Adhesive (6/box)



### LINE MARKERS/STICKERS

ITEM	DESCRIPTION
4" X 66" MARKERS	
17318	Blue
17320	Green
17321	White
17322	Yellow
STD. LEGEND STICKER	
14762	Blue Water
14763	Blue Water Valve
14761	Green Sewer
14759	White Sewer Pressure
14760	Yellow Gas



Others available



## MISCELLANEOUS

GRANULAR CHLORINE	
ITEM	DESCRIPTION
10191	5# - 6/CASE
10190	25#
10293	100#



PULL TAPE	
ITEM	DESCRIPTION
15158	1250#, 1/2" X 3000'
15159	1800#, 5/8" X 3000'
15160	2500#, 3/4" X 3000'



BLUE METER SEALS	
ITEM	COUNT
36804	100 PCS



UTILITY HAND PUMPS		
ITEM	SIZE	DESCRIPTION
43468	24" x 36"	Hose
10239	36" X 36"	Hose
10240	36" X 72"	Hose
43469	24"	Extension



COTTON WIPING RAGS - 10#	
ITEM	DESCRIPTION
11929	0-500#



## MAGNETIZED TRACER STATIONS

TEST STATION BLUE LID WHITE RHINO		
ITEM	SIZE	DESCRIPTION
15426	2" X 15"	Low Traffic
42925	2" X 15" - 24"	XL Low Traffic
32883	2" X 15"	High Traffic



The lid is available in several different colors depending on your utility application.



## MARKING TAPE

DETECTABLE TAPE		
ITEM	SIZE	DESCRIPTION
12517	2"	Blue
12516	2"	Green
12513	2"	Yellow
12512	2"	Brown
12515	2"	Purple
12690	3"	Blue
12688	3"	Green
12684	3"	Yellow
12687	3"	Purple
13065	6"	Blue
13063	6"	Green
13060	6"	Yellow
13059	6"	Brown
18589	6"	Purple
13323	12"	Blue
13321	12"	Green
12136	12"	Brown
13320	12"	Purple



Others available

NON-DETECTABLE TAPE		
ITEM	SIZE	DESCRIPTION
12691	3"	Blue
12689	3"	Green
12685	3"	Yellow
12686	3"	Purple
12677	3"	Orange
13066	6"	Blue
13064	6"	Green
40839	6"	Purple



Others available



## COPPER CLAD TRACER WIRE

WIRE			
ITEM	DESCRIPTION	QTY/BOX	PALLET
13285	10 AWG 500 RL PE30 Blue CCS	4 Rolls 500'	108 Rolls 500'
13286	10 AWG 500 RL PE30 Green CCS	4 Rolls 500'	108 Rolls 500'
13287	10 AWG 500 RL PE30 Yellow CCS	4 Rolls 500'	108 Rolls 500'
22068	2 AWG 500 RL PE30 Blue CCS	4 Rolls 500'	180 Rolls 500'
22072	12 AWG 500 RL PE30 Green CCS	4 Rolls 500'	180 Rolls 500'
22091	12 AWG 500 RL PE30 Yellow CCS	4 Rolls 500'	180 Rolls 500'
22070	14 AWG 500 RL PE30 Blue CCS	4 Rolls 500'	252 Rolls 500'
22074	14 AWG 500 RL PE30 Green CCS	4 Rolls 500'	252 Rolls 500'
13295	14 AWG 500 RL PE30 Yellow CCS	4 Rolls 500'	252 Rolls 500'
13296	18 AWG 500 RL PE30 Yellow CCS	4 Rolls 500'	252 Rolls 500'



Also available in PE45 coating

Other tracer wires available:

- THHN (Stranded & Solid)
- Bare (No Coating)
- Extra High Strength

## WIRE CONNECTORS

CONNECTORS	
ITEM	DESCRIPTION
22061	Direct Bury W/Strain Relief - Blue
10279	Direct Bury W/Strain Relief - Yellow
22115	Direct Bury Lugs - Blue
10322	Direct Bury Lugs - Yellow
43467	Split Bolt Housing - Blue
23574	Split Bolt Housing - Yellow
44093	Direct Bury W/Silicone Tube, Tan Wing



DBSR



LUGS

DIRECT BURY  
w/SILICONE TUBE



SPLIT BOLT





## POLYETHYLENE ENCASEMENT FOR DUCTILE IRON PIPE

### 8 MIL, UTILITY GRADE, AWWA SPEC

ITEM	SIZE	DESCRIPTION
16200	18"	Printed - Black
16205	29"	Printed - Black
16211	37"	Printed - Black
16218	52"	Printed - Black
16222	67"	Printed - Black
16224	81"	Printed - Black
16183	18"	Plain - Black
16185	29"	Plain - Black
16187	37"	Plain - Black
16192	52"	Plain - Black
16195	67"	Plain - Black
16197	81"	Plain -Black
16181	108"	Plain - Black
42861	18"	Printed - Blue
42862	29"	Printed - Blue
42865	37"	Printed - Blue
42863	52"	Printed - Blue
42864	67"	Printed - Blue
42866	81"	Printed - Blue
16204	18"	Printed - Purple
16209	29"	Printed - Purple
16215	37"	Printed - Purple
16220	52"	Printed - Purple
16223	67"	Printed - Purple
42858	81"	Printed - Purple

### 8 MIL, UTILITY GRADE, AWWA SPEC

ITEM ID	SIZE	DESCRIPTION
72875	18"	Printed - Clear
72876	29"	Printed - Clear
72877	37"	Printed - Clear
72878	52"	Printed - Clear
72879	67"	Printed - Clear
72880	81"	Printed - Clear
42872	18"	Printed - Green
42874	29"	Printed - Green
42911	37"	Printed - Green
42912	52"	Printed - Green
42868	67"	Printed - Green
42873	81"	Printed - Green
24552	18"	Printed - Red
24553	29"	Printed - Red
72889	37"	Printed - Red
72890	52"	Printed - Red
72891	67"	Printed - Red
72892	81"	Printed - Red
72882	18"	Printed - Yellow
72883	29"	Printed - Yellow
72884	37"	Printed - Yellow
72885	52"	Printed - Yellow
72886	67"	Printed - Yellow
72887	81"	Printed - Yellow



Custom colors available for manufacturing. Minimum order applies. Call for details. Perforated polywrap & other thicknesses also available.

## POLYWRAP TAPE

### 10 MIL THICK PVC PIPE WRAP/ POLYWRAP TAPE

ITEM	SIZE	Per Case
16279	2" WIDE	24/Case
16280	4" WIDE	12/Case

### POLYWRAP SIZING CHART

3", 4", 6"	18" X 200 ft
8", 10", 12"	29" X 200 ft
14", 16", 18"	37" X 200 ft
20", 24"	52" X 200 ft
30"	67" X 140 ft
36", 42"	81" X 120 ft
48"	108" X 100 ft



Each roll individually wrapped  
Sold in case quantities only



## CORROSION PROTECTION PRODUCTS SELF SUPPORTING MOLDING COMPOUNDS

### FEATURES:

- Excellent sealing and molding properties application
- No VOC's
- Will adhere to metal, PVC and polyethylene
- Not affected by water, acids and salts
- Inert and environmentally stable
- Minimal surface preparation (SSPC SP 2-3)
- Cold applied, self supporting and flexible
- Provides a smooth profile



## HIGH PERFORMANCE PETROLATUM TAPES

### USES & APPLICATIONS:

- Provides long term corrosion protection to above and below ground pipes, flanges, valves and related surfaces
- Can be applied to cold, wet and underwater surfaces that are minimally prepared (SSPC SP2-3)
- **Atmospheric uses:** piping, structural steel, flanges & valves, sweating lines, tank bases, pipe crossing, cooling tower piping, and under thermal insulation
- **Buried uses:** flanges & valves, pipe, weld joints, pipe couplings, pipe penetrations, cad welds, bolted fittings, ductile/cast iron pipe
- **Marine uses:** steel piles, timber piles, flanges & valves, submarine pipeline repairs, pipe hangers, concrete piles, risers, under deck piping, offshore platforms, H-piles, tie rods & end connections
- **Commercial and residential uses:** plumbing connections, cooling tower piping, cable splices, roof repairs, waterproofing & sealing, threaded connections, battery terminals, trays & tie downs, trailer axles & U-bolts

### FEATURES:

- Applied to marginally prepared surfaces (SSPC SP 2-3)
- Conforms to irregular shapes and profiles
- Can be applied to cold, wet surfaces
- Not effected by water, acid, salts or soil organics
- Encapsulation of lead paint
- Contains no solvents
- Easy application from arctic to tropical temperatures
- Ready for immediate service after application
- Meets AWWA C217 Standard
- History of proven applications since 1929





## DIGGING & STRIKING TOOLS



38007



38008



38009



38010



38011



38013



38014



38000



16413



16412



38002



10286



38017



38020



38021



38004



16887



20811



10287



38005



ITEM	DESCRIPTION
38007	Size: 2 round point, hollow back blade, 47" Fiberglass handle, 5.25lbs
38008	Size: 2 round point, hollow back blade, 27" fiberglass handle. 4.35lbs
38009	Size: 2 square point, hollow back blade, 47" fiberglass handle, 5.25lbs
38010	14" Drain spade/sharp shooter, hollow back blade, 48" fiberglass handle, 4.75lbs
38011	14" Drain spade/sharp shooter, hollow back blade, 30" fiberglass handle, 4.00lbs
38013	16" Drain spade/sharp shooter, hollow back blade, 48" fiberglass handle, 5.25 lbs
38014	4" Step trench shovel, steel, forward step blade, 47" fiberglass handle, 4.75lbs
38000	Size: 2 mud round point, hollow back blade, 47" fiberglass handle, 4.95lbs
16413	Size: 2 round point, hollow back blade, 47" fiberglass handle, 5.00lbs
16412	Size: 2 round point, hollow back blade, 27" fiberglass handle, 4.50lbs
38002	Size: 2 round point, hollow back blade, 40" fiberglass handle, 5.00lbs
10286	Size: 2 round point, hollow back blade, 48" ash handle, 4.00lbs
38017	Size: 2 round point, hollow back blade, 27" ash handle, 4.00lbs
38020	Size: 2 perforated rice, hollow back blade, 47" ash handle, 4.00lbs
38021	Size: 2 perforated rice, solid shank blade, 47" ash handle, 4.25lbs
38004	Small-head, irrigating/floral, hollow back blade, 18" fiberglass, 2.00lbs
16887	Size: 2 square point, hollow back blade, 47" fiberglass handle, 4.75lbs
20811	Size: 2 square point, hollow back blade, 27" fiberglass handle, 4.25lbs
10287	Size: 2 square point, hollow back blade, 47" ash handle, 4.50lbs
38005	Size: 2 square point, hollow back blade, 40" fiberglass handle, 4.75lbs
17096	14" Drain spade/sharp shooter, hollow back blade, 48" fiberglass handle, 5.00lbs
38018	14" Drain spade/sharp shooter, hollow back blade, 49" ash handle, 4.50lbs
17595	4" Classic trench shovel, hollow back blade, 48" fiberglass handle, 3.50lbs
38012	48" Utility probe, 3/4" steel tip, 8 1/4" fiberglass t, 1.50lbs
38003	Forged level head rock rake, straight steel tines, 66" fiberglass handle, 4.25lbs
38001	Engineer hammer, 3lb double-faced head, 14" fiberglass handle, 3.50lbs
38006	4" Mini trench shovel, hollow back blade, 21" fiberglass handle, 2.50lbs
17094	14" Drain spade/sharp shooter, hollow back blade, 30" fiberglass handle, 4.25lbs
38019	14" Drain spade/sharp shooter, hollow back blade, 30" ash handle, 3.75lbs
17098	16" Drain spade/sharp shooter, hollow back blade, 49" fiberglass, handle, 4.50lbs
77425	16" Street push broom, 6" natural palmyra stalk bristles, 60" wood handle, 4.30lbs
77426	24" Street push broom, 4" polypalm plastic bristles, braced 60" fiberglass handle, 3.50lbs

## DUCTILE IRON VALVES

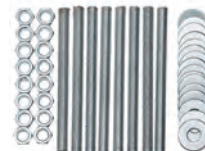
### CHECK VALVES - FLANGED

ITEM	SIZE	MASTER	PALLET
700-225-01065	2"	1	50
700-225-01066	2-1/2"	1	50
700-225-01067	3"	1	32
700-225-01068	4"	1	24
700-225-01069	5"	1	12
700-225-01070	6"	1	12
700-225-01071	8"	1	6
700-225-01072	10"	1	4
700-225-01073	12"	1	2
700-225-01074	14"	1	2



### CHECK VALVES - HARDWARE KITS

ITEM	DESCRIPTION	MASTER
700-225-01150	4" Wafer Check Nut & Bolt Kit	1
700-225-01160	6" Wafer Check Nut & Bolt Kit	1



### CHECK VALVES - LEVER & WEIGHT SPRING KITS

ITEM	SIZE	MASTER
700-225-02500	3"	1
700-225-02505	4"	1
700-225-02510	6"	1
700-225-02515	8"	1
700-225-02520	10"	1
700-225-02525	12"	1



### CHECK VALVES - LEVER & WEIGHTS

ITEM	SIZE	MASTER	PALLET
700-225-02400	3"	1	34
700-225-02405	4"	1	24
700-225-02410	6"	1	18
700-225-02415	8"	1	6
700-225-02420	10"	1	4
700-225-02425	12"	1	2



### CHECK VALVES - WAFER

ITEM	SIZE	MASTER	PALLET
700-225-00860	4"	1	150
700-225-02790	4" W/ Ball Drip & 45		
700-225-00880	6"	1	100
700-225-00900	8"	1	10



### CHECK VALVES - WAFER DOUBLE DOOR

ITEM	SIZE	MASTER
700-225-01141	10"	30
700-225-01142	12"	24
700-225-01143	14"	8
700-225-01144	16"	8



### GATE VALVES - NRS FLANGED W/ HANDWHEEL

ITEM	SIZE	MASTER
700-275-02000	3"	9
700-275-02005	4"	9
700-275-02010	6"	9
700-275-02015	8"	6
700-275-02020	10"	2
700-275-02025	12"	2
700-275-02030	14"	1



### GATE VALVES - NRS FLANGED W/ HANDWHEEL OPEN RIGHT

ITEM	SIZE	MASTER
700-280-02000	3"	9
700-280-02005	4"	9
700-280-02010	6"	9
700-280-02015	8"	6
700-280-02020	10"	2
700-280-02025	12"	2
700-280-02030	14"	1



## DUCTILE IRON VALVES

### GATE VALVES - NRS FLANGED W/ OP NUT

ITEM	SIZE	MASTER
700-275-00360	3"	9
700-275-00365	2"	9
700-275-00370	6"	9
700-275-00375	8"	6
700-275-00380	10"	2
700-275-00385	12"	2
700-275-00390	14"	1
700-275-00395	16"	1
700-275-00397	18"	1
700-275-00398	20"	1
700-275-00399	24"	1



### CHECK VALVES - NRS FLANGED W/ OP NUT - OPEN RIGHT

ITEM	SIZE	MASTER
700-280-00360	3"	9
700-280-00365	4"	9
700-280-00370	6"	9
700-280-00375	8"	6
700-280-00380	10"	2
700-280-00385	12"	2
700-280-00390	14"	1
700-280-00395	16"	1



### GATE VALVES - NRS FLANGED W/PLATE

ITEM	SIZE	PALLET
700-280-00020	4"	9
700-280-00040	6"	9
700-280-00060	8"	6
700-280-00065	10"	2
700-280-00070	12"	2
700-280-00072	14"	1
700-280-00074	16"	1
700-280-00076	18"	1
700-280-00078	20"	1
700-280-00079	24"	1



### GATE VALVES - NRS FLANGED W/ PLATE - OPEN RIGHT

ITEM	SIZE	MASTER
700-280-00020	4"	9
700-280-00040	6"	9
700-280-00060	8"	6
700-280-00065	10"	2
700-280-00070	12"	2



### GATE VALVES - NRS GROOVED W/OP NUT

ITEM	SIZE	PALLET
700-275-00620	2-1/2"	25
700-275-00630	3"	9
700-275-00640	4"	9
700-275-00650	6"	9
700-275-00660	8"	9
700-275-00680	10"	2
700-275-00690	12"	2



### GATE VALVES - NRS GROOVED W/OP NUT = OPEN RIGHT

ITEM	SIZE	PALLET
700-280-00620	2-1/2"	25
700-280-00630	3"	9
700-280-00640	4"	9
700-280-00650	6"	9
700-280-00660	8"	9
700-280-00680	10"	2
700-280-00690	12"	2



## DUCTILE IRON VALVES

### GATE VALVES - NRS GROOVED W/PLATE

ITEM	SIZE	PALLET
700-275-00700	3"	9
700-275-00710	4"	9
700-275-00720	6"	9
700-275-00730	8"	9
700-275-00740	10"	2
700-275-00750	12"	2



### GATE VALVES - NRS GROOVED W/ PLATE - OPEN RIGHT

ITEM	SIZE	PALLET
700-280-00700	3"	9
700-280-00710	4"	9
700-280-00720	6"	9
700-280-00730	8"	9
700-280-00740	10"	2
700-280-00750	12"	2



### GATE VALVES - NRS MECHANICAL JOINT W/HANDWHEEL

ITEM ID	SIZE	PALLET
700-275-02035	3"	9
700-275-02040	4"	9
700-275-02045	6"	9
700-275-02050	8"	6
700-275-02055	10"	2
700-275-02060	12"	2
700-275-02065	14"	1



### GATE VALVES - NRS MECHANICAL JOINT W/HANDWHEEL - OPEN RIGHT

ITEM ID	SIZE	PALLET
700-280-02035	3"	9
700-280-02040	4"	9
700-280-02045	6"	9
700-280-02050	8"	6
700-280-02055	10"	2
700-280-02060	12"	2
700-280-02065	14"	1



### GATE VALVES - NRS MECHANICAL JOINT W/OP NUT

ITEM	SIZE	PALLET
700-275-00460	3"	9
700-275-00480	4"	9
700-275-00500	6"	9
700-275-00520	8"	6
700-275-00540	10"	2
700-275-00560	12"	2
700-275-00562	14"	1
700-275-00564	16"	1
700-275-00566	18"	1



### GATE VALVES - NRS MECHANICAL JOINT OP NUT - OPEN RIGHT

ITEM	SIZE	PALLET
700-28-000460	3"	9
700-280-00480	4"	9
700-280-00500	6"	9
700-280-00520	8"	6
700-280-00540	10"	2
700-280-00560	12"	2
700-280-00562	14"	1
700-280-00564	16"	1
700-280-00566	18"	1



### GATE VALVES - NRS MECHANICAL JOINT W/PLATE

ITEM	SIZE	PALLET
700-275-00080	3"	9
700-275-00100	4"	9
700-275-00120	6"	9
700-275-00140	8"	6
700-275-00145	10"	2
700-275-00150	12"	2
700-275-00152	14"	1
700-275-00154	16"	1
700-275-00156	18"	1



### GATE VALVES - NRS MECHANICAL JOINT W/PLATE - OPEN RIGHT

ITEM	SIZE	PALLET
700-280-00080	3"	9
700-280-00100	4"	9
700-280-00120	6"	9
700-280-00140	8"	6
700-280-00145	10"	2
700-280-00150	12"	2



**LV** LANSDALE<sup>®</sup>  
VALVE  
MANUFACTURING CORP. **DUCTILE IRON VALVES**

**GATE VALVES - NRS MJ x FLG  
W/OP NUT**

ITEM	SIZE	PALLET
700-275-00800	4"	9
700-275-00810	6"	9
700-275-00820	8"	9
700-275-00830	10"	2
700-275-00840	12"	2



**GATE VALVES - NRS MJ x FLG  
W/OP NUT - OPEN RIGHT**

ITEM	SIZE	MASTER
700-280-00799	3"	9
700-280-00800	4"	9
700-280-00810	6"	9
700-280-00820	8"	2
700-280-00830	10"	2
700-280-00840	12"	2



**GATE VALVES - NRS PUSH-ON**

ITEM	SIZE	MASTER	PALLET
700-275-00900	2-1/2"	1	25
700-275-00910	3"	1	16
700-275-00920	4"	1	16
700-275-00930	6"	1	9
700-275-00940	8"	1	6
700-275-00950	10"	1	2
700-275-00960	12"	1	2



**GATE VALVES - NRS PUSH-ON -  
OPEN RIGHT**

ITEM	SIZE	MASTER
700-280-00900	2-1/2"	25
700-280-00910	3"	16
700-280-00920	4"	16
700-280-00930	6"	9
700-280-00940	8"	6
700-280-00950	10"	2
700-280-00960	12"	2



**GATE VALVES - NRS THREADED**

ITEM	SIZE	MASTER	PALLET
700-275-01000	2"	1	25
700-275-01005	3"	1	25
700-275-01010	4"	1	25



**GATE VALVES - NRS PUSH-ON -  
OPEN RIGHT**

ITEM	SIZE	MASTER
700-280-01000	2"	25



**LV** LANSDALE\*  
VALVE  
MANUFACTURING CORP. **DUCTILE IRON VALVES**

**GATE VALVES - REPLACEMENT PARTS**

ITEM	DESCRIPTION	MASTER
700-275-00290	NRS Gate Valve 3"- 4" Handwheel	1
700-275-00300	NRS Gate Valve 6" Handwheel	1
700-275-00310	NRS Gate Valve 8" Handwheel	1
700-275-00320	NRS Gate Valve 10"- 12" Handwheel	1
700-275-00330	NRS Gate Valve 14" Handwheel	1
700-275-01990	OS&Y Gate Valve 2-1/2" Handwheel	1
700-275-01991	OS&Y Gate Valve 3"- 4" Handwheel	1
700-250-01992	OS&Y Gate Valve 5"- 6" Handwheel	1
700-250-01993	OS&Y Gate Valve 8" Handwheel	
700-250-01994	OS&Y Gate Valve 10" Handwheel	1
700-250-01995	OS&Y Gate Valve 12" Handwheel	1
700-250-10200	Operating Nut 4"-12" Open Left Arrow 316SS	1
700-250-10210	Operating Nut 4"-12" Open Right Arrow 316SS	1
700-250-00982	OS&Y Replacement Packaging	1



**POST INDICATOR WRENCHES & REPLACEMENT PARTS**

ITEM	DESCRIPTION	MASTER
100-525-02000	PIV Wrench Adjustable	40
700-275-01996	Wall Post Handwheel	1
700-275-00181	Wall Post Sight Glass	1
700-275-01995	Wall Post Stern	1
700-275-01998	Base for Vertical Post	1
700-275-01999	Vertical Indicator Post Sight Glass	1
700-280-00181	Vertical Indicator Post Sight Glass Open Right	1



**VERTICAL INDICATOR POST EXTENSION KITS**

ITEM	DESCRIPTION	MASTER
700-275-00196	Extension Kit - 21"	36
700-275-00197	Extension Kit - 42"	20



## DUCTILE IRON VALVES

### VERTICAL INDICATOR POSTS

ITEM	DESCRIPTION	MASTER
700-275-00180	A-B Adjustable	6
700-280-00180	A-B Adjustable - Open Right	6
700-275-00185	C	6
700-280-00185	C - Open Right	6
700-275-01990	D	6
700-280-01990	D - Open Right	6
700-275-01995	E	6
700-280-01995	E - Open Right	6



### WALL POSTS

ITEM	DESCRIPTION	MASTER
700-275-00160	Wall Indicator Post	6
700-280-00160	Wall Indicator Post - Open Right	6



## DUCTILE IRON GATE VALVES

### OS&Y - FLANGE x GROOVE

ITEM	SIZE	PALLET
700-250-00805	2"	25
700-250-00810	2-1/2"	25
700-250-00820	3"	16
700-250-00840	4"	16
700-250-00860	6"	6
700-250-00880	8"	6
700-250-00900	10"	2
700-250-00920	12"	2



### OS&Y - FLANGE x GROOVE - OPEN RIGHT

ITEM	SIZE	PALLET
700-255-00805	2"	25
700-255-00810	2-1/2"	25
700-255-00820	3"	16
700-255-00840	4"	16
700-255-00860	6"	6
700-255-00880	8"	6
700-255-00900	10"	2
700-255-00920	12"	2



## TUBING COPPER

SOFT TYPE COILS			
ITEM	SIZE	MASTER	PALLET
600-600-00020	1/2" x 60'	240	2,640
600-600-00090	1/2" x 100'	200	4,000
600-600-00030	3/4" x 60'	120	1,800
600-600-00100	3/4" x 100'	100	2,600
600-600-00040	1" x 60'	60	1,320
600-600-00080	1" x 75'	75	1,650
600-600-00110	1" x 100'	100	2,200
600-600-00050	1-1/4" x 60'	60	300
600-600-00120	1-1/4" x 100'	100	300
600-600-00060	1-1/2" x 60'	60	1,500
600-600-00130	1-1/2" x 100'	100	2,000
600-600-00005	2" x 20'	20	600
600-600-00010	2" x 40'	40	1,200
600-600-00070	2" x 60'	60	1,080
600-600-00140	2" x 100'	100	300



SOFT TYPE L COILS			
ITEM	SIZE	MASTER	PALLET
600-605-00010	1/2" x 60'	60	—
600-605-00020	1/2" x 100'	100	—
600-605-00030	3/4" x 60'	60	2,700
600-605-00040	3/4" x 100'	100	3,000
600-605-00050	1" x 60'	60	2,400
600-605-00060	1" x 75'	75	—
600-605-00070	1" x 100'	100	2,300
600-605-00080	1-1/4" x 60'	60	—
600-605-00090	1-1/4" x 100'	100	—
600-605-00100	1-1/2" x 60'	60	—
600-605-00110	1-1/2" x 100'	100	—
600-605-00130	2" x 40'	40	—
600-605-00140	2" x 60'	60	—
600-605-00150	2" x 100'	100	—



SOFT TYPE K COILS - DOMESTIC			
ITEM	SIZE	MASTER	PALLET
600-610-0000	1/2" x 60'	60	—
600-610-0005	1/2" x 100'	100	—
600-610-0015	3/4" x 60'	60	2,700
600-610-0025	3/4" x 100'	100	3,000
600-610-0035	1" x 60'	60	2,400
600-610-0045	1" x 75'	75	—
600-610-0055	1" x 100'	100	2,300



HARD TYPE K			
ITEM	SIZE	MASTER	PALLET
600-600-00195	1/2"	500	3,000
600-600-00200	3/4"	200	1,600
600-600-00205	1"	100	1,200
600-600-00210	1-1/4"	100	1,000
600-600-00215	1-1/2"	100	800
600-600-00220	2"	20	540
600-600-00225	2-1/2"	20	300
600-600-00230	3"	20	200







2026 WATERWORKS PRODUCTS  
VOLUME 1