



***WATER & PLUMBING***

2026 PLUMBING PRODUCTS

# TABLE OF CONTENTS

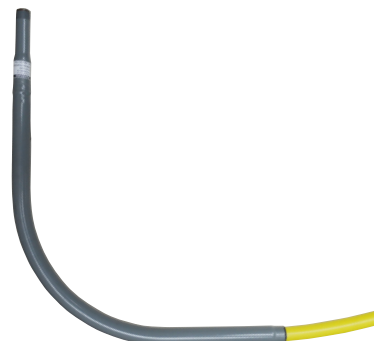
Gas Meter Risers .....	2
Gas Transitions.....	3
Universal Slip Repair Coupling.....	3
Underground Poly Pipe Fittings.....	4
Coiled Gas Pipe .....	5
Gas Valves.....	5
Electrofusion Equipment.....	5
Polyfusion Fittings .....	6
Cast Iron Fittings .....	8
Gas Pressure Regulators.....	8
Meter & Companion Flanges .....	9
Meter Couplings & Bushings .....	10
Meter Flange Gaskets & Bolt Sets .....	11
Flange Packs.....	12
Flange Bolt Sets .....	13
Gaskets.....	14
Flange Insulation Kits .....	16
Hex Nuts & Washers .....	16
Butterfly Valve Cap Screw Sets.....	17
Water Tubing.....	18
Pipe Inserts .....	18
Custom Fabrication Products .....	19
Marking Tape.....	20
Copper Clad Tracer Wire.....	21
Wire Connectors.....	21
Marking & Locating Products.....	22
Magnetized Tracer Stations .....	23
Miscellaneous .....	23
Digging & Striking Tools.....	24
Ductile Iron Valves.....	26
Tubing Copper .....	32



## GAS METER RISERS

### ANODELESS RISERS

ITEM ID	SIZE (MPT X PE)	PE TUBING SDR/ WALL THICKNESS	V	H	MASTER
22548	3/4"	SDR 11	30"	18"	12
22549	1"	SDR 11	30"	18"	10
13357	1-1/4"	SDR 10	30"	30"	5
44109	1-1/2"	SDR 11	36"	26"	5
92005	2"	SDR 11	36"	30"	2



### COMPRESSION RISERS

ITEM ID	SIZE (MPT X PE)	V	H	MASTER
14428	3/4"	24"	36"	8
14431	1"	24"	36"	6
14435	1-1/4"	24"	36"	5
14438	1-1/2"	24"	36"	4
14441	2"	24"	36"	1



### FLEX RISERS

ITEM ID	SIZE	L	MASTER
51048	3/4" MPT X 3/4" IPS DR11	36"	10
51050	1" MPT X 1" IPS DR11	36"	8
51049	1" MPT X 3/4" IPS DR11	36"	8
51051	1-1/4" MPT X 1-1/4" IPS DR10	36"	8
51052	1-1/4" MPT X 1-1/4" IPS DR11	36"	8
51053	1-1/2" MPT X 1-1/2" IPS DR11	36"	3
51054	2" MPT X 2" IPS DR11	36"	3

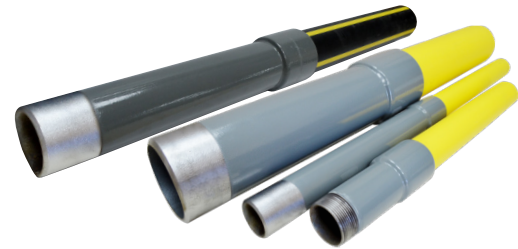




## TRANSITIONS

### POLY X STEEL TRANSITIONS - THREAD & WELD

ITEM ID	SIZE	STYLE	MASTER
17435	1/2"	NPT	36
17436	1/2"	WELD	36
17437	3/4"	NPT	36
17438	3/4"	WELD	40
17439	1"	NPT	25
17440	1"	WELD	25
17441	1-1/4"	NPT	16
17442	1-1/4"	WELD	15
17443	1-1/2"	NPT	12
17444	1-1/2"	WELD	25
17445	2"	NPT	16
17446	2"	WELD	16
17447	3"	NPT	4
24997	3"	WELD	4
17449	4"	NPT	4
17450	4"	WELD	4
17451	6"	NPT	1
17452	6"	WELD	1



## PLASSON® UNIVERSAL SLIP REPAIR COUPLING

Innovative, one-of-a-kind coupling is designed, tested and quality controlled in accordance with Plasson's internal standards, manufactured in accordance to standard ASTM D3035, ASTM F714 and AWWA C906.

- Double O-ring Seal
- Repair ID or OD Controlled Pipes SDR9-11.5
- Works on all Pipe Types (PE, Lead, Copper, PVC, PB, Galvanized)
- Available in sizes 1/2" – 2"
- Fitting is rated to a working pressure of 200psi

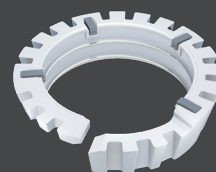


### UNIVERSAL SLIP REPAIR COUPLING

ITEM ID	SIZE	SUITABLE FOR PIPES	MASTER
29758	3/4"	3/4" IPS, 1" CTS	56
29759	1"	1" IPS, 1-1/4" CTS	40
29760	1-1/4"	1-1/4" IPS, 1-1/2" CTS	30
29761	1-1/2"	1-1/2" IPS	20
29762	2"	2" IPS	10

### SPLIT RING WITH METAL TEETH

MATERIAL
PE RP
LEAD
COPPER
PVC-U ABS
PB PP-R
GALVANIZED



\*Can be supplied without metal teeth, for PE pipe only

## PLASSON® UNDERGROUND POLY FITTINGS

COUPLINGS		
ITEM ID	SIZE	MASTER
47240	1/2" IPS (SDR 9.3)	6
47239	3/4" IPS (SDR 11)	6
47241	1" IPS (SDR 11)	6
48127	1-1/4" IPS (SDR 10)	NA
48124	1-1/4" IPS (SDR 11)	N/A
48130	1-1/2" IPS (SDR 11)	N/A
48133	2" IPS (SDR 11)	N/A



ADAPTER FITTINGS		
ITEM ID	SIZE	MASTER
47299	1/2" IPS X 1/2" CTS	NA



TEES		
ITEM ID	SIZE	MASTER
47297	1/2" X 1/2" X 1/2" IPS (SDR 9.3)	6
47242	3/4" X 3/4" X 3/4" IPS (SDR 11)	6
47243	1" X 1" X 1" IPS (SDR 11)	5
48129	1-1/4" X 1-1/4" X 1-1/4" IPS (SDR 10)	NA
48126	1-1/4" X 1-1/4" X 1-1/4" IPS (SDR 11)	NA
48132	1-1/2" X 1-1/2" X 1-1/2" IPS (SDR 11)	N/A
48135	2" X 2" X 2" IPS (SDR 11)	N/A



90° ELBOWS		
ITEM ID	SIZE	MASTER
47298	1/2" IPS (SDR 9.3)	6
47244	3/4" IPS (SDR 11)	6
47245	1" IPS (SDR 11)	5
48128	1-1/4" IPS (SDR 10)	NA
48125	1-1/4" IPS (SDR 11)	NA
48131	1-1/2" IPS (SDR 11)	N/A
48134	2" IPS (SDR 11)	N/A



MALE ADAPTER FITTING		
ITEM ID	SIZE	MASTER
54801	1/2" IPS X 1/2" MIP	NA
54802	3/4" IPS X 3/4" MIP	NA
54803	1" IPS X 1" MIP	NA



## PLASSON® GAS VALVES

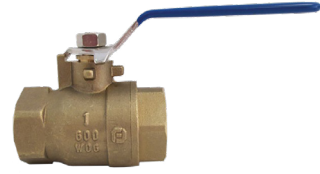
### BRASS BODY LOCK WING STOP COCKS

ITEM ID	SIZE	MASTER
16622	3/4"	12
16626	1"	8
16630	1-1/4"	6
16632	1-1/2"	6
16633	2"	4



### LEAD-FREE FULLPORT BALL VALVES

ITEM ID	SIZE
700-200-00205	1/4" NPT
700-200-00210	3/8" NPT
700-200-00215	1/2" NPT
700-200-00220	3/4" NPT
700-200-00225	1" NPT
700-200-00230	1-1/4" NPT
700-200-00235	1-1/2" NPT
700-200-00240	2" NPT
700-200-00245	2-1/2" NPT
700-200-00250	3" NPT
700-200-00252	4" NPT



### POLYETHYLENE BALL VALVES

ITEM ID	SIZE
12776	3/4" IPS
11048	1" IPS
11049	1-1/4" IPS
11050	1-1/2" IPS
11051	2" IPS
11052	3" IPS
11053	4" IPS

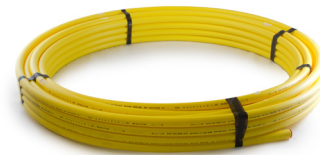


Medium density in stock. High density available. Larger sizes available.

## COILED GAS PIPE

### 2406 YELLOW GAS PIPE

ITEM ID	SIZE	SDR	PALLET
12581	3/4" IPS X 150'	SDR11	2400
12582	3/4" IPS X 500'	SDR11	5000
12238	1" IPS X 150'	SDR11	1650
12239	1" IPS X 500'	SDR11	4000
12037	1-1/4" IPS X 150'	SDR10	1650
12038	1-1/4" IPS X 500'	SDR10	4000
11988	1-1/2" IPS X 150'	SDR11	1950
11989	1-1/2" IPS X 500'	SDR11	5000
12452	2" IPS X 150'	SDR11	1350
12456	2" IPS X 500'	SDR11	3000



Larger sizes available

## RITMO AMERICA ELECTROFUSION



ELEKTRA S, M, & XL



ELEKTRA LIGHT



ELEKTRA 500 & 1000



## SOCKET FUSION & BUTT FUSION POLY FITTINGS

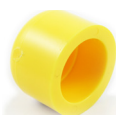
### SOCKET FUSION COUPLINGS

ITEM ID	SIZE	MASTER
18206	1/2" CTS	100
11534	1/2"	100
11535	3/4"	100
11537	1"	100
11539	1-1/4"	100
11540	1-1/2"	100
11541	2"	100
11543	3"	10
11545	4"	10



### SOCKET FUSION CAPS

ITEM ID	SIZE	MASTER
11591	1/2" CTS	100
11592	1/2"	100
11593	3/4"	100
11595	1"	100
11597	1-1/4"	100
11598	1-1/2"	100
11599	2"	100
18203	3"	10
18208	4"	10



Larger sizes available upon request

### SOCKET FUSION TEES

ITEM ID	SIZE	MASTER
18164	1/2" CTS	100
11558	1/2"	100
11559	3/4"	100
11561	1"	100
11098	1-1/4"	100
11563	1-1/2"	10
11564	2"	10
11565	3"	4
11566	4"	4



### BUTT FUSION REDUCERS

ITEM ID	SIZE	MASTER
18253	1/2" X 1/2" CTS	100
16363	1" X 1/2"	100
16331	1" X 3/4"	100
16334	1-1/4" X 1"	100
10829	1-1/2" X 1"	100
16391	1-1/2" X 1-1/4"	10
11642	2" X 1"	10
16332	2" X 1-1/4"	10
11646	2" X 1-1/2"	10
11648	3" X 2"	10
11650	4" X 2"	10
11653	4" X 3"	10



### SOCKET FUSION 90 DEGREE ELLS

ITEM ID	SIZE	MASTER
18162	1/2" CTS	100
11547	1/2"	100
11548	3/4"	100
11550	1"	100
11551	1-1/4"	100
11552	1-1/2"	10
11553	2"	10
11555	3"	4
11556	4"	4



Larger sizes available upon request



## SOCKET FUSION & BUTT FUSION POLY FITTINGS

### SOCKET FUSION REDUCERS

ITEM ID	SIZE	MASTER
11567	1/2" X 1/2" CTS	100
11568	3/4" X 1/2" CTS	100
11569	3/4" X 1/2"	100
11572	1" X 1/2" CTS	100
11573	1" X 1/2"	100
11574	1" X 3/4"	100
11576	1-1/4" X 1/2" CTS	100
11577	1-1/4" X 1/2" IPS	100
11578	1-1/4" X 3/4"	100
11580	1-1/4" X 1"	100
11581	1-1/2" X 3/4"	100
16549	1-1/2" X 1"	100
11582	1-1/2" X 1-1/4"	100
11583	2" X 3/4"	100
11585	2" X 1"	100
11586	2" X 1-1/4"	100
11587	2" X 1-1/2"	100
11588	3" X 2"	10
11589	4" X 2"	10
11590	4" X 3"	10



### BUTT FUSION 90 DEGREE ELLS

ITEM ID	SIZE	MASTER
19465	3/4"	100
15816	1"	100
11612	1-1/4"	100
10234	1-1/2"	10
11614	2"	10
11617	3"	4
11620	4"	4



### BUTT FUSION 45 DEGREE ELLS

ITEM ID	SIZE	MASTER
11604	3"	4
11606	4"	4



### BUTT FUSION CAPS

ITEM ID	SIZE	MASTER
14215	1/2" CTS	100
14216	1/2"	100
10826	3/4"	100
11659	1"	100
18170	1-1/4"	100
11660	1-1/2"	100
11661	2"	100
11663	3"	10
11665	4"	10



### BUTT FUSION TEES

ITEM ID	SIZE	MASTER
17287	1/2" CTS	100
17288	1/2"	100
17238	3/4"	100
17236	1"	100
11627	1-1/4"	100
17237	1-1/2"	10
11628	2"	10
11631	3"	4
11634	4"	4



Fusion Fittings available in high density black

## COATED CAST IRON COMPRESSION FITTINGS

COATED COMPRESSION GAS TEES		
ITEM ID	SIZE	MASTER
14264	3/4" IPS	10
14265	1" IPS	10
14266	1-1/4" IPS	6
14267	1-1/2" IPS	4
14268	2" IPS	2



COATED COMPRESSION GAS COUPLINGS		
ITEM ID	SIZE	MASTER
14250	3/4" IPS	16
14251	1" IPS	15
14252	1-1/4" IPS	10
14253	1-1/2" IPS	6
14254	2" IPS	3



COATED COMPRESSION GAS MALE ADAPTERS		
ITEM ID	SIZE	MASTER
14256	3/4" IPS	30
14258	1" IPS	25
14260	1-1/4" IPS	20
14261	1-1/2" IPS	10
14262	2" IPS	6



## PRESSURE REGULATORS

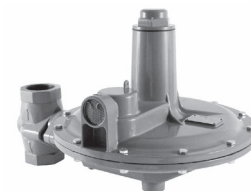
### BELGAS P140 COMPACT RESIDENTIAL REGULATOR

- Versatile
- Control Accuracy
- Compact Design



### BELGAS P200 MEDIUM COMMERCIAL REGULATOR

- Minimize Sudden Downstream Load Change
- Wide Pressure Ranges
- P202 has internal relief valve for over pressure protection



### BELGAS P143 FULL SIZE RESIDENTIAL REGULATOR

- Versatile
- Control Accuracy
- Compact Design
- Low Pressure Cut-off



### BELGAS PG103 LINE PRESSURE REGULATOR

- Precise regulating control of both full flow and of pilot flows
- Nitrile rubber diaphragm and washer are resistant to combustible gases
- Die-cast aluminum housing
- Regulators are supplied with vent limiter



### BELGAS P300 SMALL COMMERCIAL REGULATOR

- Minimize Sudden Downstream Load Change
- Wide Pressure Ranges
- P302 has internal relief valve for over pressure protection



### BELGAS PG105 LINE PRESSURE REGULATOR

- Precise regulating control of both full flow and of pilot flows
- Nitrile rubber diaphragm and washer are resistant to combustible gases
- Die-cast aluminum housing
- Regulators are supplied with vent limiter



Contact Customer Service for Proper Sizing Specifications



## METER FLANGES, COMPANION FLANGES, & FLANGE KITS

### BRASS METER FLANGES

ITEM ID	SIZE	DESCRIPTION
40368	1-1/2"	Female NPT, Brass Meter Flange
19679	1-1/2"	Male NPT, Brass Meter Flange
40535	1-1/2"	Double Brass Meter Flange Kit
40536	1-1/2"	Single Brass Meter Flange Kit
12051	1-1/2"	Double Brass Meter Flange Kit
40369	2"	Brass Meter Flange
19686	2"	Male NPT, Brass Meter Flange
40537	2"	Double Brass Meter Flange Kit
40538	2"	Single Brass Meter Flange Kit



### BRASS COMPANION FLANGES

ITEM ID	SIZE	DESCRIPTION
12102	2"	Brass Companion Flange Kit
12054	2"	Double Brass Companion Flange Kit
12103	3"	Brass Companion Flange Kit
12059	3"	Double Brass Companion Flange Kit
12104	4"	Brass Companion Flange Kit
12061	4"	Double Brass Companion Flange Kit
12105	6"	Brass Companion Flange Kit
12068	6"	Double Brass Companion Flange Kit

### CAST IRON METER FLANGES

ITEM ID	SIZE	DESCRIPTION
19677	1-1/2"	Female NPT, Cast Iron Meter Flange
12342	1-1/2"	Single Cast Iron Meter Flange Kit
12052	1-1/2"	Double Cast Iron Meter Flange Kit
19684	2"	2" Cast Iron Meter Flange
12057	2"	2" Double Cast Iron Meter Flange Kit
12344	2"	2" Single Cast Iron Meter Flange Kit



### CAST IRON COMPANION FLANGES

ITEM ID	SIZE	DESCRIPTION
51708	2"	Cast Iron Companion Flange Kit
12056	2"	Double Cast Iron Companion Flange Kit
12096	3"	Cast Iron Companion Flange Kit
12060	3"	Double Cast Iron Companion Flange Kit
12100	4"	Cast Iron Companion Flange Kit
12066	4"	Double Cast Iron Companion Flange Kit
12101	6"	Cast Iron Companion Flange Kit
12068	6"	Double Cast Iron Companion Flange Kit

- Kits include zinc bolts & nuts and drop-in gaskets
- Oval gaskets and SS bolts and nuts available
- All meter flanges are certified lead free - NSF-61-G
- Domestic & heavy duty flanges available



## METER COUPLINGS & BUSHINGS

### LEAD-FREE BRASS METER COUPLINGS

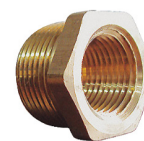
ITEM ID	SIZE
19675	5/8"
45295	3/4" X 2-1/2"
19643	3/4" X 90° Elbow
19672	3/4" X 1-1/2"
19673	3/4" X 2"
19674	3/4" X 3"
42243	3/4" X 8-1/2"
10839	1" X 1-1/2"
19637	1" X 90° Elbow
19638	1" X 2"
45296	1" X 2-5/8"
19639	1-1/2" X 2-7/8"
19640	1-1/4" X 2-3/4"
19671	1" TO 1/2" Reducing
55973	1" X 8-1/2"
45297	2" X 3"



Meter couplings gaskets supplied with brass meter couplings are NSF-61 approved.

### LEAD-FREE BRASS BUSHINGS

ITEM ID	SIZE
55539	5/8" X 3/4" X 1" NPSM Threaded
55540	3/4" X 1" NPSM Threaded
35469	1-1/4" X 1" NPSM Threaded
10023	1-1/2" X 1-1/4" NPSM Threaded



## METER FLANGE GASKETS & BOLT SETS

### METER FLANGE BOLT SETS

ITEM ID	SIZE	DESCRIPTION
18525	1-1/2"	GR A Zinc
12107	1-1/2"	304SS, EPDM
12108	1-1/2"	304SS
12235	1-1/2"	Zinc
12110	1-1/2"	Double Pack - 304SS, EPDM
12299	1-1/2"	Double Pack - Zinc ,EPDM
12111	1-1/2"	Double Pack - 304SS
12236	1-1/2"	Double Pack - Zinc
18528	2"	GR A Zinc
12173	2"	304SS, EPDM
12187	2"	304SS
12301	2"	ZINC
12188	2"	Double Pack - 304SS, EPDM
12190	2"	Double Pack - 304SS
12302	2"	Double Pack - Zinc



Other gasket materials available upon request

### METER FLANGE GASKETS

ITEM ID	SIZE
OVAL - EPDM	
14618	1-1/2"
14619	2"
OVAL - RED RUBBER	
14009	1-1/2"
14011	2"
DROP IN - EPDM	
15556	1-1/2"
17184	2"
DROP IN - RED RUBBER	
14000	1-1/2"
14006	2"
OVAL - CLOTH	
24365	1-1/2"
17141	2"
DROP IN - CLOTH	
20024	1-1/2"
14003	2"





## FLANGE PACKS W/NON-ASBESTOS RING 1/16" GASKET

### 150# ZINC PLATED

ITEM ID	SIZE	MASTER
19139	1/2"	10
19140	3/4"	10
19141	1"	10
19142	1-1/4"	10
19143	1-1/2"	10
19144	2"	10
19145	2-1/2"	10
19146	3"	10
19147	4"	10
19148	5"	10
19149	6"	10
19150	8"	4
19151	10"	5
19152	12"	1



### 150# PLAIN FINISH

ITEM ID	SIZE	MASTER
19240	1/2"	10
19241	3/4"	10
19242	1"	10
19243	1-1/4"	10
19244	1-1/2"	10
19245	2"	10
19246	2-1/2"	10
19247	3"	10
19248	4"	10
19249	5"	10
19250	6"	10
19251	8"	4
19252	10"	5
19253	12"	1



### 150# PLAIN FINISH FULL FACE

ITEM ID	SIZE	MASTER
19130	2"	10
19131	2-1/2"	10
19132	3"	10
19134	4"	10
19135	5"	10
22351	6"	10
22352	8"	4
19192	10"	5
19194	12"	1



### 150# ZINC PLATED FULL FACE

ITEM ID	SIZE	MASTER
19266	2"	10
19268	2-1/2"	10
19270	3"	10
19237	4"	10
20182	5"	10
19238	6"	10
19239	8"	4
21546	10"	5
19272	12"	1



Domestic available upon request

NSF & other material gaskets available upon request



## FLANGE PACKS



Grade 5 & A-307 Grade B plain finish bolt sets also available. Domestic available upon request.



150# FLANGE ZINC PLATED A-307 GRADE A		
ITEM ID	SIZE	MASTER
18936	1/2"	50
18937	3/4"	50
18938	1"	50
18939	1-1/4"	50
18940	1-1/2"	50
18941	2"	50
18943	2-1/2"	50
18943	3"	50
18944	4"	20
18946	5"	10
18946	6"	10
18947	8"	10
18950	10"	1
18950	12"	1
18954	14"	1
18955	16"	1
18957	18"	1
18961	20"	1
18964	24"	1
18971	30"	1
18973	36"	1
18975	42"	1

150# FLANGE PLAIN FINISH A-307 GRADE A		
ITEM ID	SIZE	MASTER
18822	1/2"	50
18823	3/4"	50
18824	1"	50
18825	1-1/4"	50
18826	1-1/2"	50
18827	2"	50
18830	2-1/2"	50
18830	3"	50
18833	4"	20
18835	5"	10
18835	6"	10
18843	8"	10
18850	10"	1
18850	12"	1
18855	14"	1
18858	16"	1
18861	18"	1
18868	20"	1
18876	24"	1
18887	30"	1
18896	36"	1
18904	42"	1

All sets are for ductile to ductile

**NEED A SPECIAL SIZE OR CONFIGURATION? NEED A DIFFERENT FINISH OR GRADE?**  
 Give us a call, we can make a kit for your special need! Allow 24 - 48 hours production time to build 18" - 48" bolt sets. Xylan coating can be applied per customer specifications.



## FLANGE PACKS



150# FLANGE 304 STAINLESS		
ITEM ID	SIZE	MASTER
18686	1/2"	50
18687	3/4"	50
18688	1"	50
18689	1-1/4"	50
18690	1-1/2"	50
18691	2"	50
18693	2-1/2"	50
18693	3"	50
18695	4"	20
18700	5"	10
18700	6"	10
18703	8"	10
18708	10"	1
18708	12"	1
18711	14"	1
18712	16"	1
18718	18"	1
18723	20"	1
18728	24"	1

150# FLANGE 316 STAINLESS		
ITEM ID	SIZE	MASTER
18762	1/2"	50
18763	3/4"	50
18764	1"	50
18765	1-1/4"	50
18766	1-1/2"	50
18767	2"	50
18769	2-1/2"	50
18769	3"	50
18770	4"	20
18772	5"	10
18772	6"	10
18773	8"	10
18775	10"	1
18775	12"	1
18777	14"	1
18778	16"	1
18781	18"	1
18783	20"	1
18787	24"	1

150# FLANGE ZINC PLATED A-307 GRADE A (PVC)		
ITEM ID	SIZE	MASTER
54647	2"	20
54648	2-1/2" OR 3"	20
54649	4"	20
54650	5" OR 6"	10
54652	8"	10
54653	10" OR 12"	1





## NON-ASBESTOS RING GASKETS



150# 1/16"	
ITEM ID	SIZE
15755	1/2"
15756	3/4"
15757	1"
15758	1-1/4"
15759	1-1/2"
15760	2"
15761	2-1/2"
15762	3"
15764	4"
15765	5"
15766	6"
15767	8"
15768	10"
15769	12"
15770	14"
15771	16"
15772	18"
15773	20"
15774	24"
15775	30"
15776	36"

150# 1/8"	
22280	1/2"
15797	3/4"
15798	1"
22281	1-1/4"
22282	1-1/2"
15799	2"
15800	2-1/2"
15801	3"
15802	4"
22283	5"
15803	6"
15804	8"
15805	10"
15806	12"
22284	14"
22285	16"
15807	18"
15808	20"
15809	24"

150# 1/16" FULL FACE	
ITEM ID	SIZE
15692	1/2"
15693	3/4"
15694	1"
15695	1-1/4"
15696	1-1/2"
15697	2"
15698	2-1/2"
15699	3"
15700	4"
15701	5"
15702	6"
15703	8"
15704	10"
15705	12"
15706	14"
15707	16"
15708	18"
15709	20"
15710	24"
15711	30"
15712	36"

150# 1/8" FULL FACE	
22286	1/2"
22287	3/4"
22288	1"
22289	1-1/4"
22290	1-1/2"
15735	2"
15736	2-1/2"
15737	3"
15738	4"
22291	5"
15739	6"
15740	8"
15741	10"
15742	12"
15743	14"
15744	16"
15745	18"
22292	20"
15746	24"
15747	30"
15478	36"

150# 304 SS GRAPHITE SPIRAL WOUND	
ITEM ID	SIZE
16896	1/2"
16897	3/4"
16898	1"
16899	1-1/4"
16900	1-1/2"
16901	2"
16902	2-1/2"
16903	3"
16904	4"
16905	5"
16906	6"
16907	8"
16908	10"
16909	12"



# NON-ASBESTOS RING GASKETS



300# 1/16"	
ITEM ID	SIZE
15777	1/2"
15778	3/4"
15779	1"
15780	1-1/4"
15781	1-1/2"
15782	2"
15783	2-1/2"
15784	3"
15785	4"
15786	5"
15787	6"
15788	8"
15789	10"
15790	12"
15791	14"
15792	16"
15793	18"
20"	15794
24"	15795

300# 1/16" FULL FACE	
ITEM ID	SIZE
15715	1/2"
15716	3/4"
15717	1"
15718	1-1/4"
15719	1-1/2"
15720	2"
15721	2-1/2"
15722	3"
15724	4"
15725	5"
15726	6"
15727	8"
15728	10"
15729	12"
15730	14"
15731	16"
15732	18"
15733	20"
15734	24"

150# 304 SS GRAPHITE SPIRAL WOUND	
ITEM ID	SIZE
43786	1/2"
43787	3/4"
32887	1"
43788	1-1/4"
40988	1-1/2"
37825	2"
35306	2-1/2"
32067	3"
16924	4"
16926	6"
16927	8"
16928	10"
16929	12"

300# 1/8"	
ITEM ID	SIZE
22923	1/2"
22924	3/4"
22925	1"
22926	1-1/4"
22927	1-1/2"
22928	2"
15810	2-1/2"
15811	3"
15812	4"
22929	5"
22277	6"
22930	8"
22278	10"
22931	12"
22932	14"
22933	16"
22934	18"
22279	20"
22935	24"

300# 1/8" FULL FACE	
ITEM ID	SIZE
22936	1/2"
22937	3/4"
22938	1"
22939	1-1/4"
22940	1-1/2"
22941	2"
22942	2-1/2"
22943	3"
22944	4"
22945	5"
22946	6"
22947	8"
22948	10"
15751	12"
22949	14"
22950	16"
22951	18"
22952	20"
22953	24"

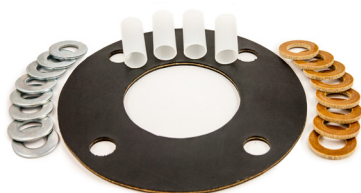


Other gasket materials available:

- Red Rubber
- Black SBR
- Cloth Inserted
- Nitrile
- Neoprene
- EPDM
- NSF
- Domestic
- Speciality gaskets upon request



## FLANGE INSULATION KITS



(Optional Gasket Shown)

### 150# INSULATION KITS POLY SLEEVES & DOUBLE PHENOLIC AND ZINC WASHERS

ITEM ID	SIZE
22275	1/2"
15211	3/4"
15212	1"
22276	1-1/4"
15216	1-1/2"
15219	2"
15222	2-1/2"
15225	3"
15228	4"
15232	5"
15234	6"
15239	8"
15243	10"
15246	12"
15249	14"
15250	16"
15252	18"
15255	20"
15256	24"
15257	30"
15259	36"
15260	42"
15261	48"
15263	54"
15266	60"



### DUC LUGS, LUG WASHERS, & ANODE CAPS

ITEM ID	SIZE
55218	3/4" Duc Lug
55219	3/4" Lug Washer
37095	5/8"-11, Zinc Anode Cap
36564	3/4"-11, Zinc Anode Cap

## HEX NUTS & WASHERS



304 & 316 stainless also available

### FLAT WASHERS - ZINC PLATED

ITEM ID	SIZE	BOX QTY	MASTER
20006	1/4"	100	5000
20007	3/8"	100	2000
20008	1/2"	100	2000
20009	5/8"	50	1000
20010	3/4"	25	500
20011	7/8"	25	500
20012	1"	25	250



### FENDER WASHERS - ZINC PLATED

ITEM ID	SIZE	BOX QTY	MASTER
19996	1/4" X 1-1/4"	100	2000
19998	3/8" X 1-1/2"	100	2000
19999	1/2" X 2"	100	2000



### FINISHED HEX NUTS - ZINC PLATED

ITEM ID	SIZE	BOX QTY	MASTER
19570	1/4"	100	5000
19572	3/8"	100	2000
19573	1/2"	100	2000
19575	5/8"	50	1000
19577	3/4"	25	500
19579	7/8"	25	250
19580	1"	25	250



## BUTTERFLY VALVE CAP SCREW SETS

(LUG STYLE) SINGLE SIDE PLAIN		
ITEM ID	SIZE	MASTER
18446	2"	50
18446	2-1/2"	50
18481	3"	50
18452	4"	50
18456	5"	25
18456	6"	25
18458	8"	25
18460	10"	10
18462	12"	10
18465	14"	1
18468	16"	1
18471	18"	1
18473	20"	1
18475	24"	1

(LUG STYLE) DOUBLE SIDE PLAIN		
ITEM ID	SIZE	MASTER
2"	18447	50
2-1/2"	18447	50
3"	18447	50
4"	18451	10
5"	18455	10
6"	18455	10
8"	18457	10
10"	18459	1
12"	18461	1
14"	18463	1
16"	18467	1
18"	18469	1
20"	18472	1
24"	18474	1



WAFER STYLE	
ITEM ID	SIZE
19970	2"
19971	2-1/2"
19973	3"
19974	4"
19976	5"
19977	6"
19979	8"
19981	10"
19983	12"

(LUG STYLE) SINGLE SIDE A-307 ZINC (PVC)		
ITEM ID	SIZE	MASTER
24527	2"	50
41616	2-1/2"	50
24528	3"	50
32649	4"	10
47456	5"	10
24529	6"	10
41614	8"	10
41613	10"	1
32325	12"	1





## WATER TUBING



Other sizes and types of tubing available

### PE-4710 BLACK

ITEM ID	SIZE	SDR	PSI	PALLET
16111	3/4" CTS X 100'	SDR9	250	2000
16112	3/4" CTS X 500'	SDR9	250	5000
16113	1" CTS X 100'	SDR9	250	2000
16115	1" CTS X 300'	SDR9	250	3300
16116	1-1/4" CTS X 100'	SDR9	250	1500
16117	1-1/4" CTS X 300'	SDR9	250	2700
16118	1-1/2" CTS X 100'	SDR9	250	1800
16119	1-1/2" CTS X 300'	SDR9	250	2700
16120	2" CTS X 100'	SDR9	250	1500
16121	2" CTS X 300'	SDR9	250	2100

### PE-4710 BLUE

ITEM ID	SIZE	SDR	PSI	PALLET
16134	3/4" CTS X 100'	SDR9	250	2000
16136	1" CTS X 100'	SDR9	250	2000
16137	1" CTS X 300'	SDR9	250	3300
22443	1-1/4" CTS X 100'	SDR9	250	1500
16138	1-1/2" CTS X 100'	SDR9	250	1800
16139	2" CTS X 100'	SDR9	250	1500

### ENDOTRACE PE-4710

ITEM ID	SIZE	SDR	PSI	QTY/PALLET
16144	3/4" CTS X 100'	SDR9	250	2000
16145	1" CTS X 100'	SDR9	250	2000
22872	1-1/4" CTS X 100'	SDR9	250	1500
22599	1-1/2" CTS X 100'	SDR9	250	1700
16146	2" CTS X 100'	SDR9	250	1500
37511	2" IPS X 100'	SDR11	250	1600

## PIPE INSERTS

### PIPE INSERTS

ITEM ID	SIZE
STAINLESS STEEL	
12970	3/4" CTS SS Stiffner
12967	1" CTS SS Stiffner
12968	1-1/2" CTS SS Stiffner
12969	2" CTS SS Stiffner
PLASTIC	
19953	1" CTS Plastic Stiffner
19954	3/4" CTS Plastic Stiffner





## CUSTOM FABRICATION

VALVE STEM EXTENSIONS DROP & LOCK AND NON-LOCKING		
ITEM ID	SIZE	MASTER
17855	1	17813
7856	1.5	17814
17857	2	17815
17858	2.5	17816
17859	3	17817
17861	3.5	17818
17863	4	17819
17865	4.5	17820
17866	5	17821
17869	5.5	17822
17870	6	17823
17874	6.5	17824
17877	7	17825
17878	7.5	17826
17880	8	17827
17882	8.5	17828
17884	9	17829
17885	9.5	17830
17886	10	17831



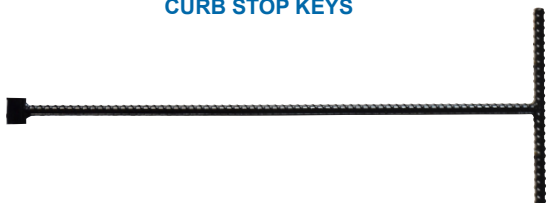
Other sizes and special types can be manufactured per your specifications

VALVE WRENCHES	
ITEM ID	DESCRIPTION
18421	Valve Wrench 3'-6' Combo
18422	Valve Wrench 3'-6'
18423	Valve Wrench 5.5'-9.5' Combo
18419	Valve Wrench 5.5'-9.5'

### COMBO ATTACHMENTS



### CURB STOP KEYS



### METER BOX LID KEYS





## MARKING TAPE

### DETECTABLE TAPE

ITEM ID	SIZE	DESCRIPTION
12517	2"	Blue
12516	2"	Green
12513	2"	Yellow
12512	2"	Brown
12515	2"	Purple
12690	3"	Blue
12688	3"	Green
12684	3"	Yellow
12687	3"	Purple
13065	6"	Blue
13063	6"	Green
13060	6"	Yellow
13059	6"	Brown
18589	6"	Purple
13323	12"	Blue
13321	12"	Green
12136	12"	Brown
13320	12"	Purple



Others available

### NON-DETECTABLE TAPE

ITEM ID	SIZE	DESCRIPTION
12691	3"	Blue
12689	3"	Green
12685	3"	Yellow
12686	3"	Purple
12677	3"	Orange
13066	6"	Blue
13064	6"	Green
40839	6"	Purple



Others available



## COPPER CLAD TRACER WIRE

WIRE			
ITEM ID	DESCRIPTION	MASTER	PALLET
13285	10 AWG 500 RL PE30 Blue CCS	4 Rolls 500'	108 Rolls 500'
13286	10 AWG 500 RL PE30 Green CCS	4 Rolls 500'	108 Rolls 500'
13287	10 AWG 500 RL PE30 Yellow CCS	4 Rolls 500'	108 Rolls 500'
22068	2 AWG 500 RL PE30 Blue CCS	4 Rolls 500'	180 Rolls 500'
22072	12 AWG 500 RL PE30 Green CCS	4 Rolls 500'	180 Rolls 500'
22091	12 AWG 500 RL PE30 Yellow CCS	4 Rolls 500'	180 Rolls 500'
22070	14 AWG 500 RL PE30 Blue CCS	4 Rolls 500'	252 Rolls 500'
22074	14 AWG 500 RL PE30 Green CCS	4 Rolls 500'	252 Rolls 500'
13295	14 AWG 500 RL PE30 Yellow CCS	4 Rolls 500'	252 Rolls 500'
13296	18 AWG 500 RL PE30 Yellow CCS	4 Rolls 500'	252 Rolls 500'



Also available in PE45 coating

Other tracer wires available:

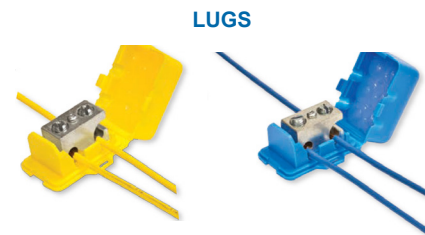
- THHN (Stranded & Solid)
- Bare (No Coating)
- Extra High Strength

## WIRE CONNECTORS

CONNECTORS	
ITEM	DESCRIPTION
22061	Direct Bury W/Strain Relief - Blue
10279	Direct Bury W/Strain Relief - Yellow
22115	Direct Bury Lugs - Blue
10322	Direct Bury Lugs - Yellow
43467	Split Bolt Housing - Blue
23574	Split Bolt Housing - Yellow
44093	Direct Bury W/Silicone Tube, Tan Wing



DBSR

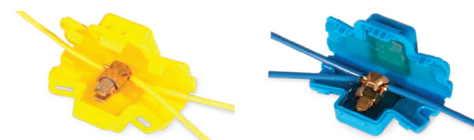


LUGS

DIRECT BURY  
w/SILICONE TUBE



SPLIT BOLT





## MARKING AND LOCATING PRODUCTS

TRIVIEW POST MARKERS	
ITEM ID	DESCRIPTION
30021	Green
36145	Yellow
22384	Blue



RUST-OLEUM MARKING PAINT	
WATER BASED INVERTED	
ITEM ID	DESCRIPTION
10376	Blue
10679	Green
10377	Yellow
10380	White
10378	Orange
10680	Pink
10379	Red
SOLVENT BASED INVERTED	
10372	Blue
10672	Green
10375	White
10369	Orange
10674	Pink
10374	Red
10373	Yellow
24 CASES FFA FROM FACTORY	
10675	Banner Red Hydrant Upright



Others available

MARKING FLAGS	
ITEM ID	DESCRIPTION
4" x 5" x 21" Staff w/Plain - 1000/BX	
12847	Blue
12851	Green
12856	White
12858	Yellow
CALL	Orange
4" x 5" x 21" staff w/SCRIPT - 1000//BX	
12850	Blue
12853	Green
12857	White
12859	Yellow
CALL	Orange



LINE MARKERS/STICKERS	
ITEM ID	DESCRIPTION
4" X 66" MARKERS	
17318	Blue
17320	Green
17321	White
17322	Yellow
STD. LEGEND STICKER	
14762	Blue Water
14763	Blue Water Valve
14761	Green Sewer
14759	White Sewer Pressure
14760	Yellow Gas



Others available

Others available



## MAGNETIZED TRACER STATIONS

TEST STATION BLUE LID WHITE RHINO		
ITEM	SIZE	DESCRIPTION
15426	2" X 15"	Low Traffic
42925	2" X 15" - 24"	XL Low Traffic
32883	2" X 15"	High Traffic

The lid is available in several different colors depending on your utility application.



## MISCELLANEOUS



UTILITY HAND PUMPS		
ITEM ID	SIZE	DESCRIPTION
43468	24" x 36"	Hose
10239	36" X 36"	Hose
10240	36" X 72"	Hose
43469	24"	Extension

BLUE METER SEALS	
ITEM ID	COUNT
36804	100 PCS

**WHITE RHINO DIGGING & STRIKING TOOLS**



38007



38008



38009



38010



38011



38013



38014



38000



16413



16412



38002



10286



38017



38020



38021



38004



16887



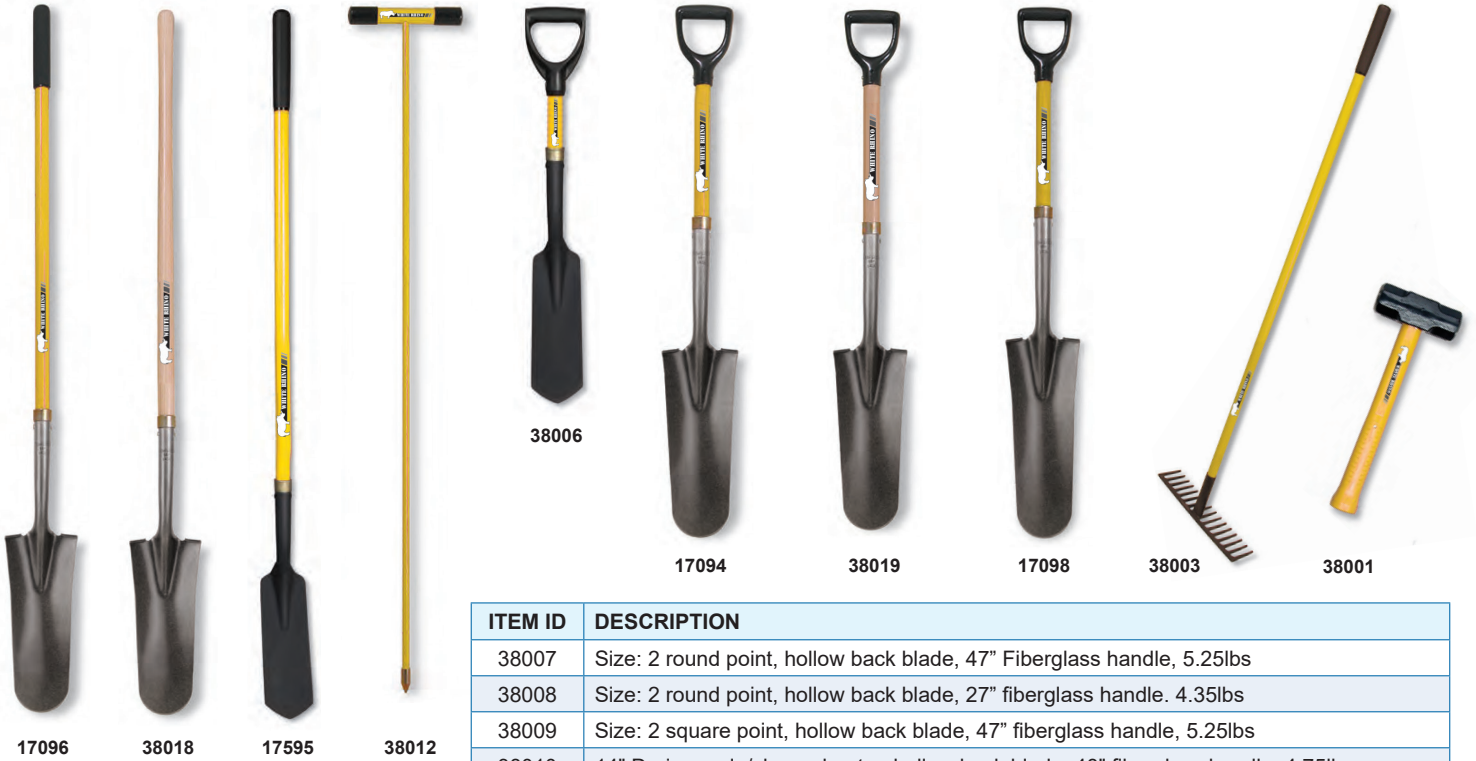
20811



10287



38005



ITEM ID	DESCRIPTION
38007	Size: 2 round point, hollow back blade, 47" Fiberglass handle, 5.25lbs
38008	Size: 2 round point, hollow back blade, 27" fiberglass handle. 4.35lbs
38009	Size: 2 square point, hollow back blade, 47" fiberglass handle, 5.25lbs
38010	14" Drain spade/sharp shooter, hollow back blade, 48" fiberglass handle, 4.75lbs
38011	14" Drain spade/sharp shooter, hollow back blade, 30" fiberglass handle, 4.00lbs
38013	16" Drain spade/sharp shooter, hollow back blade, 48" fiberglass handle, 5.25 lbs
38014	4" Step trench shovel, steel, forward step blade, 47" fiberglass handle, 4.75lbs
38000	Size: 2 mud round point, hollow back blade, 47" fiberglass handle, 4.95lbs
16413	Size: 2 round point, hollow back blade, 47" fiberglass handle, 5.00lbs
16412	Size: 2 round point, hollow back blade, 27" fiberglass handle, 4.50lbs
38002	Size: 2 round point, hollow back blade, 40" fiberglass handle, 5.00lbs
10286	Size: 2 round point, hollow back blade, 48" ash handle, 4.00lbs
38017	Size: 2 round point, hollow back blade, 27" ash handle, 4.00lbs
38020	Size: 2 perforated rice, hollow back blade, 47" ash handle, 4.00lbs
38021	Size: 2 perforated rice, solid shank blade, 47" ash handle, 4.25lbs
38004	Small-head, irrigating/floral, hollow back blade, 18" fiberglass, 2.00lbs
16887	Size: 2 square point, hollow back blade, 47" fiberglass handle, 4.75lbs
20811	Size: 2 square point, hollow back blade, 27" fiberglass handle, 4.25lbs
10287	Size: 2 square point, hollow back blade, 47" ash handle, 4.50lbs
38005	Size: 2 square point, hollow back blade, 40" fiberglass handle, 4.75lbs
17096	14" Drain spade/sharp shooter, hollow back blade, 48" fiberglass handle, 5.00lbs
38018	14" Drain spade/sharp shooter, hollow back blade, 49" ash handle, 4.50lbs
17595	4" Classic trench shovel, hollow back blade, 48" fiberglass handle, 3.50lbs
38012	48" Utility probe, 3/4" steel tip, 8 1/4" fiberglass t, 1.50lbs
38003	Forged level head rock rake, straight steel tines, 66" fiberglass handle, 4.25lbs
38001	Engineer hammer, 3lb double-faced head, 14" fiberglass handle, 3.50lbs
38006	4" Mini trench shovel, hollow back blade, 21" fiberglass handle, 2.50lbs
17094	14" Drain spade/sharp shooter, hollow back blade, 30" fiberglass handle, 4.25lbs
38019	14" Drain spade/sharp shooter, hollow back blade, 30" ash handle, 3.75lbs
17098	16" Drain spade/sharp shooter, hollow back blade, 49" fiberglass, handle, 4.50lbs
77425	16" Street push broom, 6" natural palmyra stalk bristles, 60" wood handle, 4.30lbs
77426	24" Street push broom, 4" polypalm plastic bristles, braced 60" fiberglass handle, 3.50lbs

## DUCTILE IRON VALVES

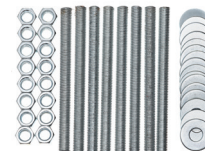
### CHECK VALVES - FLANGED

ITEM ID	SIZE	MASTER	PALLET
700-225-01065	2"	1	50
700-225-01066	2-1/2"	1	50
700-225-01067	3"	1	32
700-225-01068	4"	1	24
700-225-01069	5"	1	12
700-225-01070	6"	1	12
700-225-01071	8"	1	6
700-225-01072	10"	1	4
700-225-01073	12"	1	2
700-225-01074	14"	1	2



### CHECK VALVES - HARDWARE KITS

ITEM ID	DESCRIPTION	MASTER
700-225-01150	4" Wafer Check Nut & Bolt Kit	1
700-225-01160	6" Wafer Check Nut & Bolt Kit	1



### CHECK VALVES - LEVER & WEIGHT SPRING KITS

ITEM ID	SIZE	MASTER
700-225-02500	3"	1
700-225-02505	4"	1
700-225-02510	6"	1
700-225-02515	8"	1
700-225-02520	10"	1
700-225-02525	12"	1



### CHECK VALVES - LEVER & WEIGHTS

ITEM ID	SIZE	MASTER	PALLET
700-225-02400	3"	1	34
700-225-02405	4"	1	24
700-225-02410	6"	1	18
700-225-02415	8"	1	6
700-225-02420	10"	1	4
700-225-02425	12"	1	2



### CHECK VALVES - WAFER

ITEM ID	SIZE	MASTER	PALLET
700-225-00860	4"	1	150
700-225-02790	4" W/ Ball Drip & 45		
700-225-00880	6"	1	100
700-225-00900	8"	1	10



### CHECK VALVES - WAFER DOUBLE DOOR

ITEM ID	SIZE	PALLET
700-225-01141	10"	30
700-225-01142	12"	24
700-225-01143	14"	8
700-225-01144	16"	8



### GATE VALVES - NRS FLANGED W/ HANDWHEEL

ITEM ID	SIZE	MASTER
700-275-02000	3"	9
700-275-02005	4"	9
700-275-02010	6"	9
700-275-02015	8"	6
700-275-02020	10"	2
700-275-02025	12"	2
700-275-02030	14"	1



### GATE VALVES - NRS FLANGED W/ HANDWHEEL OPEN RIGHT

ITEM ID	SIZE	MASTER
700-280-02000	3"	9
700-280-02005	4"	9
700-280-02010	6"	9
700-280-02015	8"	6
700-280-02020	10"	2
700-280-02025	12"	2
700-280-02030	14"	1



## DUCTILE IRON VALVES

### GATE VALVES - NRS FLANGED W/ OP NUT

ITEM ID	SIZE	MASTER
700-275-00360	3"	9
700-275-00365	2"	9
700-275-00370	6"	9
700-275-00375	8"	6
700-275-00380	10"	2
700-275-00385	12"	2
700-275-00390	14"	1
700-275-00395	16"	1
700-275-00397	18"	1
700-275-00398	20"	1
700-275-00399	24"	1



### CHECK VALVES - NRS FLANGED W/ OP NUT - OPEN RIGHT

ITEM ID	SIZE	MASTER
700-280-00360	3"	9
700-280-00365	4"	9
700-280-00370	6"	9
700-280-00375	8"	6
700-280-00380	10"	2
700-280-00385	12"	2
700-280-00390	14"	1
700-280-00395	16"	1



### GATE VALVES - NRS FLANGED W/PLATE

ITEM ID	SIZE	PALLET
700-280-00020	4"	9
700-280-00040	6"	9
700-280-00060	8"	6
700-280-00065	10"	2
700-280-00070	12"	2
700-280-00072	14"	1
700-280-00074	16"	1
700-280-00076	18"	1
00-280-00078	20"	1
700-280-00079	24"	1



### GATE VALVES - NRS FLANGED W/ PLATE - OPEN RIGHT

ITEM ID	SIZE	MASTER
700-280-00020	4"	9
700-280-00040	6"	9
700-280-00060	8"	6
700-280-00065	10"	2
700-280-00070	12"	2



### GATE VALES - NRS GROOVED W/OP NUT

ITEM ID	SIZE	PALLET
700-275-00620	2-1/2"	25
700-275-00630	3"	9
700-275-00640	4"	9
700-275-00650	6"	9
700-275-00660	8"	9
700-275-00680	10"	2
700-275-00690	12"	2



### GATE VALES- NRS GROOVED W/OP NUT = OPEN RIGHT

ITEM ID	SIZE	MASTER
700-280-00620	2-1/2"	25
700-280-00630	3"	9
700-280-00640	4"	9
700-280-00650	6"	9
700-280-00660	8"	9
700-280-00680	10"	2
700-280-00690	12"	2



## DUCTILE IRON VALVES

### GATE VALVES - NRS GROOVED W/PLATE

ITEM ID	SIZE	PALLET
700-275-00700	3"	9
700-275-00710	4"	9
700-275-00720	6"	9
700-275-00730	8"	9
700-275-00740	10"	2
700-275-00750	12"	2



### GATE VALVES - NRS GROOVED W/ PLATE - OPEN RIGHT

ITEM ID	SIZE	MASTER
700-280-00700	3"	9
700-280-00710	4"	9
700-280-00720	6"	9
700-280-00730	8"	9
700-280-00740	10"	2
700-280-00750	12"	2



### GATE VALVES - NRS MECHANICAL JOINT W/HANDWHEEL

ITEM ID	SIZE	MASTER
700-275-02035	3"	9
700-275-02040	4"	9
700-275-02045	6"	9
700-275-02050	8"	6
700-275-02055	10"	2
700-275-02060	12"	2
700-275-02065	14"	1



### GATE VALVES - NRS MECHANICAL JOINT W/HANDWHEEL - OPEN RIGHT

ITEM ID	SIZE	MASTER
700-280-02035	3"	9
700-280-02040	4"	9
700-280-02045	6"	9
700-280-02050	8"	6
700-280-02055	10"	2
700-280-02060	12"	2
700-280-02065	14"	1



### GATE VALVES - NRS MECHANICAL JOINT W/OP NUT

ITEM ID	SIZE	MASTER
700-275-00460	3"	9
700-275-00480	4"	9
700-275-00500	6"	9
700-275-00520	8"	6
700-275-00540	10"	2
700-275-00560	12"	2
700-275-00562	14"	1
700-275-00564	16"	1
700-275-00566	18"	1



### GATE VALVES - NRS MECHANICAL JOINT W/OP NUT - OPEN RIGHT

ITEM ID	SIZE	MASTER
700-280-00460	3"	9
700-280-00480	4"	9
700-280-00500	6"	9
700-280-00520	8"	6
700-280-00540	10"	2
700-280-00560	12"	2
700-280-00562	14"	1
700-280-00564	16"	1
700-280-00566	18"	1



### GATE VALVES - NRS MECHANICAL JOINT W/PLATE

ITEM ID	SIZE	MASTER
700-275-00080	3"	9
700-275-00100	4"	9
700-275-00120	6"	9
700-275-00140	8"	6
700-275-00145	10"	2
700-275-00150	12"	2
700-275-00152	14"	1
700-275-00154	16"	1
700-275-00156	18"	1



### GATE VALVES - NRS MECHANICAL JOINT W/PLATE - OPEN RIGHT

ITEM ID	SIZE	MASTER
700-280-00080	3"	9
700-280-00100	4"	9
700-280-00120	6"	9
700-280-00140	8"	6
700-280-00145	10"	2
700-280-00150	12"	2



## DUCTILE IRON VALVES

### GATE VALVES - NRS MJ x FLG W/OP NUT

ITEM ID	SIZE	PALLET
700-275-00800	4"	9
700-275-00810	6"	9
700-275-00820	8"	9
700-275-00830	10"	2
700-275-00840	12"	2



### GATE VALVES - NRS MJ x FLG W/OP NUT - OPEN RIGHT

ITEM ID	SIZE	MASTER
700-280-00799	3"	9
700-280-00800	4"	9
700-280-00810	6"	9
700-280-00820	8"	2
700-280-00830	10"	2
700-280-00840	12"	2



### GATE VALVES - NRS PUSH-ON

ITEM ID	SIZE	MASTER	PALLET
700-275-00900	2-1/2"	1	25
700-275-00910	3"	1	16
700-275-00920	4"	1	16
700-275-00930	6"	1	9
700-275-00940	8"	1	6
700-275-00950	10"	1	2
700-275-00960	12"	1	2



### GATE VALVES - NRS PUSH-ON - OPEN RIGHT

ITEM ID	SIZE	MASTER
700-280-00900	2-1/2"	25
700-280-00910	3"	16
700-280-00920	4"	16
700-280-00930	6"	9
700-280-00940	8"	6
700-280-00950	10"	2
700-280-00960	12"	2



### GATE VALVES - NRS THREADED

ITEM ID	SIZE	MASTER	PALLET
700-275-01000	2"	1	25
700-275-01005	3"	1	25
700-275-01010	4"	1	25



### GATE VALVES - NRS PUSH-ON - OPEN RIGHT

ITEM ID	SIZE	MASTER
700-280-01000	2"	25





GATE VALVES - REPLACEMENT PARTS		
ITEM ID	DESCRIPTION	MASTER
700-275-00290	NRS Gate Valve 3"- 4" Handwheel	1
700-275-00300	NRS Gate Valve 6" Handwheel	1
700-275-00310	NRS Gate Valve 8" Handwheel	1
700-275-00320	NRS Gate Valve 10"- 12" Handwheel	1
700-275-00330	NRS Gate Valve 14" Handwheel	1
700-275-01990	OS&Y Gate Valve 2-1/2" Handwheel	1
700-275-01991	OS&Y Gate Valve 3"- 4" Handwheel	1
700-250-01992	OS&Y Gate Valve 5"- 6" Handwheel	1
700-250-01993	OS&Y Gate Valve 8" Handwheel	
700-250-01994	OS&Y Gate Valve 10" Handwheel	1
700-250-01995	OS&Y Gate Valve 12" Handwheel	1
700-250-10200	Operating Nut 4"-12" Open Left Arrow 316SS	1
700-250-10210	Operating Nut 4"-12" Open Right Arrow 316SS	1
700-250-00982	OS&Y Replacement Packaging	1

POST INDICATOR WRENCHES & REPLACEMENT PARTS		
ITEM ID	DESCRIPTION	MASTER
100-525-02000	PIV Wrench Adjustable	40
700-275-01996	Wall Post Handwheel	1
700-275-00181	Wall Post Sight Glass	1
700-275-01995	Wall Post Stern	1
700-275-01998	Base for Vertical Post	1
700-275-01999	Vertical Indicator Post Sight Glass	1
700-280-00181	Vertical Indicator Post Sight Glass Open Right	1



VERTICAL INDICATOR POST EXTENSION KITS		
ITEM ID	DESCRIPTION	MASTER
700-275-00196	Extension Kit - 21"	36
700-275-00197	Extension Kit - 42"	20



## DUCTILE IRON VALVES

### VERTICAL INDICATOR POSTS

ITEM ID	DESCRIPTION	MASTER
700-275-00180	A-B Adjustable	6
700-280-00180	A-B Adjustable - Open Right	6
700-275-00185	C	6
700-280-00185	C - Open Right	6
700-275-01990	D	6
700-280-01990	D - Open Right	6
700-275-01995	E	6
700-280-01995	E - Open Right	6



### WALL POSTS

ITEM ID	DESCRIPTION	MASTER
700-275-00160	Wall Indicator Post	6
700-280-00160	Wall Indicator Post - Open Right	6



## DUCTILE IRON GATE VALVES

### OS&Y - FLANGE x GROOVE

ITEM ID	SIZE	PALLET
700-250-00805	2"	25
700-250-00810	2-1/2"	25
700-250-00820	3"	16
700-250-00840	4"	16
700-250-00860	6"	6
700-250-00880	8"	6
700-250-00900	10"	2
700-250-00920	12"	2



### OS&Y - FLANGE x GROOVE - OPEN RIGHT

ITEM ID	SIZE	PALLET
700-255-00805	2"	25
700-255-00810	2-1/2"	25
700-255-00820	3"	16
700-255-00840	4"	16
700-255-00860	6"	6
700-255-00880	8"	6
700-255-00900	10"	2
700-255-00920	12"	2



## TUBING COPPER

### SOFT TYPE COILS

ITEM ID	SIZE	MASTER	PALLET
600-600-00020	1/2" x 60'	240	2,640
600-600-00090	1/2" x 100'	200	4,000
600-600-00030	3/4" x 60'	120	1,800
600-600-00100	3/4" x 100'	100	2,600
600-600-00040	1" x 60'	60	1,320
600-600-00080	1" x 75'	75	1,650
600-600-00110	1" x 100'	100	2,200
600-600-00050	1-1/4" x 60'	60	300
600-600-00120	1-1/4" x 100'	100	300
600-600-00060	1-1/2" x 60'	60	1,500
600-600-00130	1-1/2" x 100'	100	2,000
600-600-00005	2" x 20'	20	600
600-600-00010	2" x 40'	40	1,200
600-600-00070	2" x 60'	60	1,080
600-600-00140	2" x 100'	100	300



### SOFT TYPE L COILS

ITEM ID	SIZE	MASTER	PALLET
600-605-00010	1/2" x 60'	60	—
600-605-00020	1/2" x 100'	100	—
600-605-00030	3/4" x 60'	60	2,700
600-605-00040	3/4" x 100'	100	3,000
600-605-00050	1" x 60'	60	2,400
600-605-00060	1" x 75'	75	—
600-605-00070	1" x 100'	100	2,300
600-605-00080	1-1/4" x 60'	60	—
600-605-00090	1-1/4" x 100'	100	—
600-605-00100	1-1/2" x 60'	60	—
600-605-00110	1-1/2" x 100'	100	—
600-605-00130	2" x 40'	40	—
600-605-00140	2" x 60'	60	—
600-605-00150	2" x 100'	100	—



### SOFT TYPE K COILS - DOMESTIC

ITEM ID	SIZE	MASTER	PALLET
600-610-0000	1/2" x 60'	60	—
600-610-0005	1/2" x 100'	100	—
600-610-0015	3/4" x 60'	60	2,700
600-610-0025	3/4" x 100'	100	3,000
600-610-0035	1" x 60'	60	2,400
600-610-0045	1" x 75'	75	—
600-610-0055	1" x 100'	100	2,300



### HARD TYPE K

ITEM ID	SIZE	MASTER	PALLET
600-600-00195	1/2"	500	3,000
600-600-00200	3/4"	200	1,600
600-600-00205	1"	100	1,200
600-600-00210	1-1/4"	100	1,000
600-600-00215	1-1/2"	100	800
600-600-00220	2"	20	540
600-600-00225	2-1/2"	20	300
600-600-00230	3"	20	200





2026 PLUMBING PRODUCTS  
VOLUME 1