



CHELSEA RISE

NEWS

JULY 2026



We've had a lot of proud moments on this project, but this one was right up there...and what a stunning day it was to see it happen. The Chelsea Rise roof is well and truly on, and to mark the occasion, we got some of the project team together for photos. In the pic above, Luke Kus and Aaron Goddard from Kalmar Construction and Chris Guyatt from Babbage Consultants joined our Sales Manager Julie Warbrick and Directors Darren and Jason Brown.

the ROOF IS ON!



Because it's not every day you get to stand on top of a dream that has become a reality, we took the opportunity to snap a family shot of Darren Brown, Jason Brown, and Head of Design Charlotte Wiltens-Brown.

In other progress news, our glazing is

now done all the way up to level 6, with gib installation completed to level 5.

A big thanks to Kalmar Construction for hitting these milestones with us, keeping the timing on track for an early 2027 completion.



MISSED OUR LIVE WEBINAR? The full recording is available to watch.

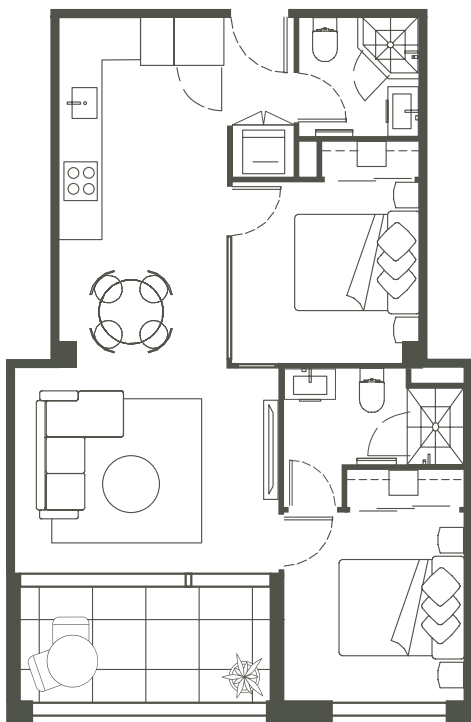
Our lead developer Darren Brown (who also happens to be one of NZ's most experienced investors and developers!) recently hosted a live webinar sharing his perspective on the Auckland property market in 2026 - and why he believes a significant window of opportunity may be opening.

Drawing on his decades of experience, Darren talked through some of the key forces shaping the market right now, including the ones that aren't on most people's radar yet.

If you'd like to see the video, email us at info@chelsearise.co.nz.



SPOTLIGHT on APARTMENT 509



This is a particularly easy home to fall in love with, in one of our most popular configurations. Apartment 509 enjoys an outlook that takes in the Chelsea Sugar Factory, the city skyline and the Waitākere Ranges - a panorama that shifts beautifully with the light throughout the day.

At 69.2m² including a 7.9m² balcony, this is a well-proportioned two bedroom, two bathroom apartment with a full Bosch appliance package. A car park is available to purchase separately. Residents enjoy access to the gym, residents' lounge and shared workspace, and Chelsea Rise's landscaped grounds and community garden.

Birkenhead Village is right there - great cafes, restaurants, shops, a medical centre, entertainment, nature walks and easy public transport, all just 8km from the CBD. Priced at \$1,370,000.

Explore the full listing online, contact Jason or Julie to find out more, or pop into our showroom at 80 Mokoia Road for a chat.

A VISIT FROM MPS KIERAN MCANULTY & SHANAN HALBERT

With the roof on, MP Shanan Halbert came for another visit, this time bringing along MP Kieran McAnulty, Labour's Housing spokesperson. It was great to show them both our progress while talking about Auckland's growth, and we loved what Shanan had to say:

"With 73 new apartments and around 150 people working on site, projects like this are about more than just housing. They support jobs, help keep the construction sector afloat, and bring customers through the doors of local Birkenhead businesses."

Pictured below from left to right: Luke Kus (Kalmar Construction), Jason Brown, Darren Brown, Kieran McAnulty, Shanan Halbert.



APARTMENT 101

- 1 bedroom + Flexi
- 1 bathroom
- 61.2m²
- \$879,000

Sporting our popular one bedroom + flexi plan, this apartment is easterly facing with a garden outlook and private balcony.



APARTMENT 704

- 3 bedrooms
- 3.5 bathrooms
- 226.4m²
- \$4,500,000

Exceptional penthouse living with breathtaking views, sophisticated interiors, and an impressive 72m² wrap-around balcony.