



# CIARON MAHER RACING OWNERSHIP GUIDE



# Welcome to CMR.



[Click here to watch video](#)



A letter from

## Ciaron Maher

Whether you're a first-time owner or a long-time client, our mission is to ensure that your horse has the best opportunity to reach its potential while ensuring you have the most enjoyable possible experience as an owner.

We're a large organisation now, with systems and structures that have allowed us to maintain a strong strike rate whilst the number of horses, staff and locations grow.

I've always believed in putting the very best people around me, and our team is world-class. Our Assistant Trainers could all be senior trainers in their own right, our Bloodstock team has an impeccable record of finding talented horses via auctions and private purchases, our communications are industry-leading, and our Data and Performance team are driving us forward into the next era of racing.

This is a team that I'm incredibly proud of and a team that you're now a part of. None of this happens without you, the owner, and we try to reflect that in everything we do.

In these pages, you will find most things you need to know about owning a horse with us, but if you ever need anything, we're only ever a phone call away.

Ciaron



# Contents.

The Engine Room _____	04
Our Locations _____	05
VIC Locations _____	06
NSW Locations _____	07
The CMR Experience _____	08
The Numbers _____	09
Bloodstock _____	10
We Bring the Best Horses _____	11
Weanlings and Yearlings _____	12
Tried Horses and Imports _____	13
Philosophy Meets Performance _____	14
Training _____	15
Training Fees _____	16
Glossary _____	17
Useful Contacts _____	18

# The Engine Room

*“Elite horses need elite people. We bring both.”*



**Ciaron Maher**  
Head Trainer



**Jack Turnbull**  
Assistant Trainer

An accomplished horseman, Jack Turnbull joined the stable in the Winter of 2021 as Assistant Trainer at our Ballarat facility. After completing an apprenticeship with Tony Noonan, Jack worked in Newmarket, UK, for several years before returning to Melbourne as Mike Moroney’s Assistant Trainer.

Jack joined us after four years with Moroney and brings to our operation a level of knowledge and dedication that will see him and our stable flourish for years to come.



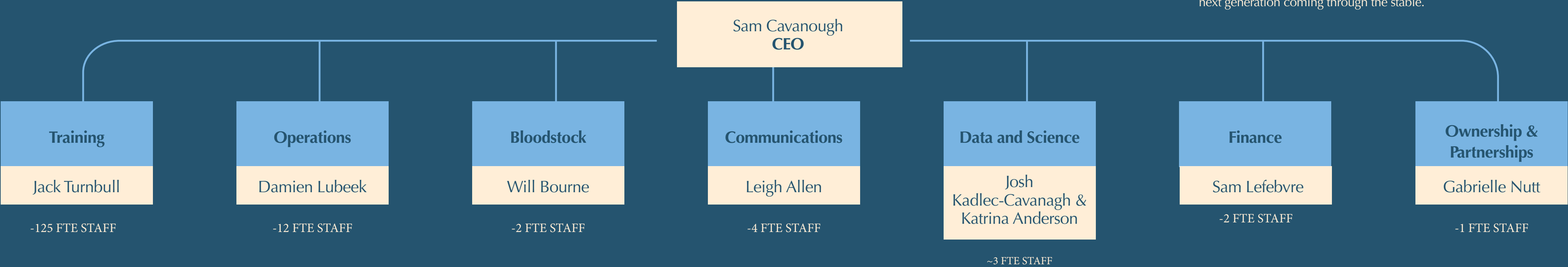
**Joh Gerard-Dubord**  
Assistant Trainer  
(NSW)

A French native who grew up on the track, being from a family of Thoroughbred breeders. Joh gained experience in the UK, the USA, and France before moving to Australia in 2014. Joh has been based in Sydney since arriving here, initially with Godolphin for three and a half years, before joining the CMR team in March 2020.



**Nikki White**  
Assistant Trainer  
(Ballarat)

Nikki has steadily risen through the ranks at CMR, starting out as a rider and working her way up to her current role as Assistant Trainer. With years of hands-on experience under her belt, she knows the system inside and out and understands exactly what it takes to get the best out of every horse in her care. Having been an integral part of the Ballarat team for so long, Nikki is not only trusted and respected by her colleagues but is also the ideal leader to guide and mentor the next generation coming through the stable.



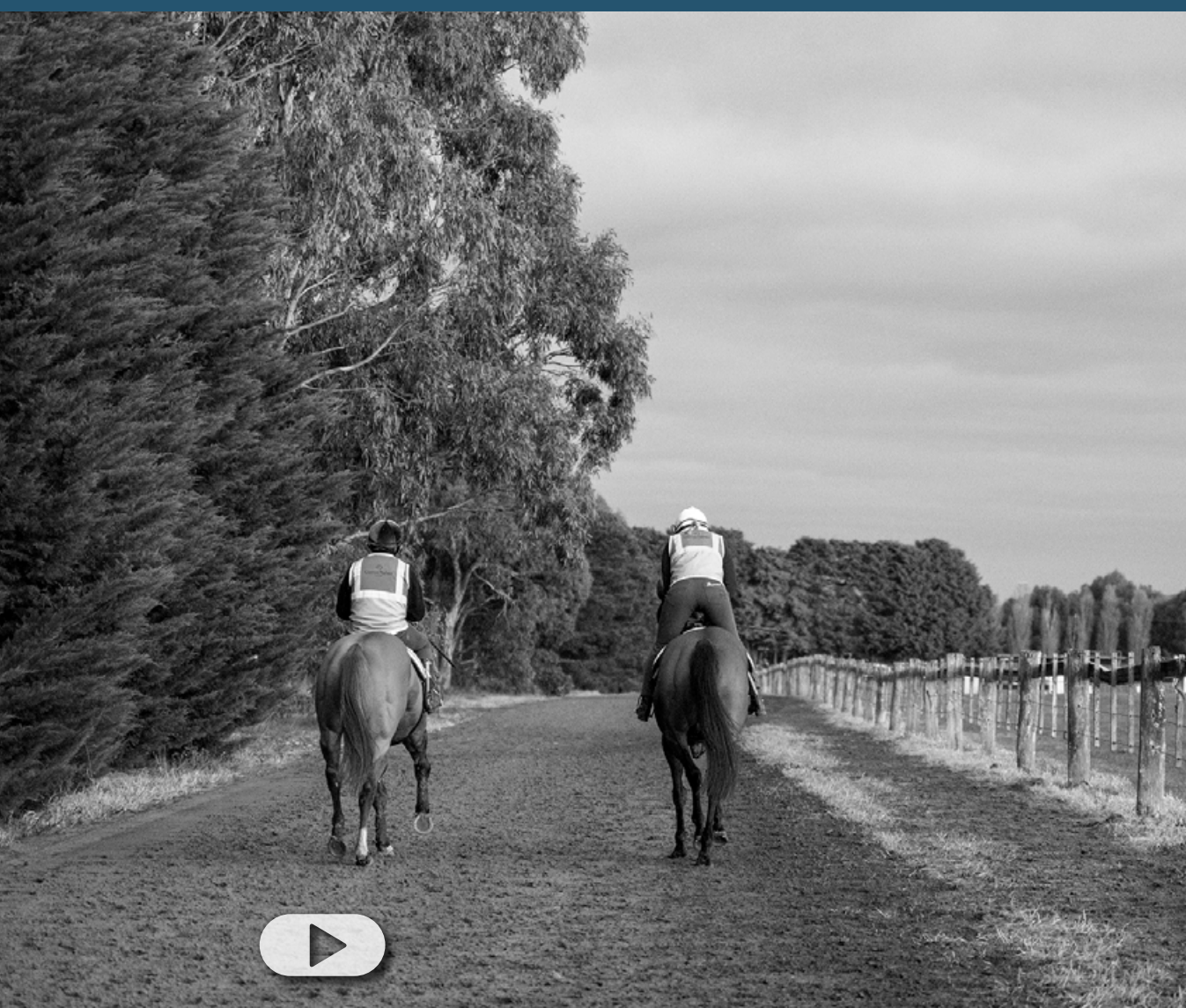


# Our Locations





# VIC Locations



[Click here for video](#)

## Ballarat

**Capacity:** Up to 190 horses in training  
CMR HQ. World-class facilities and fast becoming one of Victoria’s premier training tracks. The Ballarat stable has so much variety that embodies the best aspects of Metro and Country training.



[Click here for video](#)

## Cranbourne

**Capacity:** Up to 80 horses in training  
Based adjacent to the Cranbourne Racecourse, our Cranbourne stable provides the perfect city-based facility to complement the Ballarat base, with metro accessibility and even closer to our Mornington Peninsula facilities.



[Click here for video](#)

## Fingal

**Capacity:** Up to 40 horses in training  
We have operated out of Fingal for two years, and the results off the property for our horses have been exceptional. Fingal contains a natural sand track that we have built, allowing horses to work slowly up and around gradual hills, quickly elevating their fitness levels.  
Horses live outdoors in yards with mates, and it is an excellent place for stayers to build up their fitness in a very natural environment.



[Click here for video](#)

## Pakenham Spelling Farm

Located on the outskirts of Melbourne, Pakenham Spelling Farm provides spacious and lush paddocks for horses when spelling. The farm’s proximity to our other facilities allows the training team to closely monitor horses when spelling.



# NSW Locations



[Click here for video](#)

## Warwick Farm

**Capacity:** Up to 35 horses in training

Based adjacent to Warwick Farm Racecourse, our recently expanded Sydney base is home to our Sydney operations, with exceptional on-site facilities for our stable and easy access to the track.



[Click here for video](#)

## Bong Bong Farm

**Capacity:** Up to 100 horses in training

Our recently acquired Bong Bong Farm has an extraordinarily high standard of elite equine facilities to accommodate a sophisticated thoroughbred operation of the highest calibre. Conveniently located in the renowned Southern Highlands region, the farm is only a 60-minute drive from Warwick Farm and boasts 61 boxes, an irrigated 1,250m gradual incline turf and sand training track, hyperbaric chamber, equine spa, six-horse ‘Sea Walker’, high altitude (hypoxic chamber) training treadmill along with two dry horse walkers, treadmill, two indoor arenas, sand rolls, lunging yard and integrated office/ administration centre and parade ring.



[Click here for video](#)

## Bobs Farm

**Capacity:** Up to 35 horses in training

The facilities of Bobs Farm are not so dissimilar to Fingal; however, horses in work at Bobs Farm train down the long stretch of dunes near Anna Bay. The varying depths of sand provide an ideal surface for horses to build a solid fitness base whilst in a more relaxed training environment.



# The CMR Experience.

## Communications

We'll never stop striving to provide our owners with the highest quality, cutting-edge updates, with our best-in-class communications team well-equipped to take you on the exciting journey of racehorse ownership, from weanling to winning post.

You'll enjoy regular curated updates, insights into your horse's work from our training and data science teams, and access to our newsletters, podcasts, competitions, stable mail and more.

We're always on the lookout for initiatives to ensure we have the most informed and most satisfied owners in the industry, seeking their ongoing feedback and undertaking regular analysis of non-racing communications and customer service initiatives.

## Cutting Edge Training

Our six-member Sports Science and Data team are on the industry frontline, cultivating international and non-racing insights in pioneering and integrating some of the industry's most advanced training methodologies, working in partnership with our globally-schooled training team to ensure your horse is thriving and capable of reaching its maximum potential.

Coupling sports science methodologies and data analytics, the team helps frame your horse's training regime, ensuring horse welfare and affording it a competitive advantage once the floats are loaded and track-bound.

Our internally constructed database collating race data, training insights, and scheduling ensures your horse is afforded its optimal race placement, along with its integral contribution to our customer insights and general business operations in our quest to provide you with a superior racehorse ownership experience.

## Events

Our dedicated events team works tirelessly to ensure you feel a part of the CMR community, assembling Open Days, Charity Galas, International Racing Tours, Member-Discounts with Corporate Partnerships, Personalised Merchandise and Raceday Functions.







# The Numbers.

Career Prizemoney  
**\$260.46m**

Career Wins  
**2,641**

23/24 Season Prizemoney  
**\$60.48m**

23/24 Season Wins  
**330**

Career Black-Type Wins  
**257**  
Group 1: 56, Group 2: 36,  
Group 3: 76, Listed: 89

23/24 Strikerate  
**13.6%**

\*to 31 July 2025



# Bloodstock.

## Public Auctions



## Privately Negotiated



CMR is constantly monitoring current equine talent we think we can take from ‘good’ to ‘great’ and are active at all of the major horse sales across the Southern and Northern Hemispheres on our quest to find the next generation of stars.

As avid followers of the global industry, through the use of international form knowledge, data analysis and our global networks, our team are always on the lookout for quality Yearlings, Tried Horses and Breeding Stock.

European Tried Horse and Yearling Selection has been a successful process for the stable, securing numerous stakes winners. Recently, the CMR team have begun further investing in the American Yearling Market, with an initial focus on the Keeneland Yearling Sales in Kentucky, securing some exciting prospects.

### Weanlings

Weanlings are horses between six months and a year old and are usually purchased privately out of a paddock or through a Weanling Sale Auction. The journey to the racetrack is longer, but the purchase price tends to be cheaper than buying the same horse as a Yearling.

#### Icarian Dream

Icarian Dream was purchased from the Magic Millions National Sale as a weanling for \$305k. She was subsequently put through as a yearling (selling for \$300k) in order to qualify for the lucrative Magic Millions Race Series. As a 2yo, she won on debut at Warwick Farm before a solid 4th in the \$1million Golden Gift, followed by an impressive black-type win in the G3 B.J McLachlan Stakes at Eagle Farm defeating subsequent G1 winner Cool Archie and G3 winner The Playwright.

### Yearlings

The majority of horses sold through live auctions in Australia are Yearlings, which are horses aged between one and two years old. A yearling purchased during the major sales can be racing as soon as October that year, but most will take a little longer to get to the track, depending on their breeding and physical development.

#### Coolangatta

Purchased at the 2021 Magic Millions Gold Coast Yearling Sale for \$280k, Coolangatta’s career was littered with incredible performances at the highest level. A dual Group 1 winner, she also claimed the Magic Millions 2YO Classic in 2022 and delivered over \$3m in prizemoney in just eight career starts. Her future now lies as a Mum, and her progeny will be in high demand.

#### Ruthless Dame

Ruthless Dame competed against the very best in her career, making seven appearances in Group 1 races from just 16 starts. She clinched a thrilling Group 1 victory in what was arguably the toughest edition of the Sangster and narrowly finished second in the Group 1 Surround Stakes. With earnings exceeding \$1.2 million, Ruthless Dame has recently retired to stud, having been purchased for \$2 million.

### Tried Horses

Tried Horses are horses we purchase privately or through online auctions that have already raced. These horses tend to be more expensive, as they are known quantities, but we have an excellent track record of identifying them before they reach their peak.

#### Hitotsu

We purchased Hitotsu as a two-year-old raced maiden for \$800k. He would go on to achieve feats never-before-seen on a racetrack. He won the Group 1 VRC Derby straight out of the Caulfield Guineas before winning the Group 1 Australian Guineas first-up next prep and then the Group 1 Australian Derby second-up. Now standing at stud, his legacy will hopefully continue through his progeny.

#### Bella Nipotina

Bella Nipotina is a prime example of a tried horse who flourished thanks to our range of locations. She spent ample time in both NSW and Victoria throughout her career. In doing so, she became the second-highest earner in Australia pocketing an extraordinary \$22,757,625 and four Group 1 wins including victory in The \$20,000,000 Everest. At the conclusion of her career, she was sold for \$4.2million as a breeding proposition.

### Imports

Most imports we purchase from overseas tend to fall into the Tried Horse category, be they private purchases or through sales such as the Tattersalls Horses in Training Sale in the UK. Again, these horses may cost more money but can often deliver a faster return on investment.

#### Gold Trip

Our first Melbourne Cup winner, Gold Trip, was purchased privately after a brilliant 4th placing in the esteemed Group 1 Prix de l’Arc De Triomphe. After his heroics in The Cup, he returned to win the Group 1 Turnbull Stakes and ran third in the Group 1 Caulfield Cup. At the conclusion of an illustrious career, Gold Trip has recently retired to stud in Victoria.

#### Light Infantry Man

Known as Light Infantry in Europe, we privately secured Light Infantry as a Golden Eagle prospect in 2022. After a luckless 6th, he returned to Europe for a summer campaign in 2023 with multiple G1 placings. He returned to Australia in late 2023 and recorded his first G1 win over 12 months later in the G1 Northerly at Ascot in December 2024. In the Autumn of 2025, Light Infantry Man scored his second G1 victory in the Australian Cup defeating a host of G1 winners. His earnings are just shy of \$4million.



# We Bring the Best Horses.

Imports to have first start in 24/25 Season

10 Imports  
Average handicap of

91.5

Ciaron Maher



Australia's #1 importer of  
high-rated talent

*"Most stables hope to buy a champion.  
We build a pipeline of them."*



**Light Infantry**

(Now known as Light Infantry Man)  
purchased for the Golden Eagle.

Rated

**#105**

subsequent  
2 x G1 winner  
in Aus

**Duke De Sessa**

Purchased for the Doncaster  
Handicap.

Rated

**#104**

subsequent  
G1 winner  
in Aus



**Circle Of Fire**

Purchased for the G1 Sydney Cup

**Won**

G1 Sydney Cup





# Weanlings and Yearlings.

The CMR Team is a key stakeholder in the Weanlings and Yearlings markets and has a tested selection procedure that begins with detailed pedigree research, data analysis and on-farm inspections. We head into each acquisition process armed with a clear and detailed understanding of the market and our current and future owners' requirements, ensuring 'wants' become 'haves'.

## The Sales Ring

Equipped with a shortlist and the confidence in a proven process, we head to each of the Sales throughout the year with an unwavering aim to bring the best Weanlings and Yearlings into the CMR fold at the best price.

## Transport

Once the hammer falls, your new purchase is loaded onto the CMR floats with engines idling, before being shuttled to our breakers to begin their journey as a racehorse.

## Breaking In

The delicate transition from juvenile to highly-trained athlete is one that requires collaboration between breaker, trainer and horse. Our breakers are truly the best in the business, ensuring your horse is given the most solid foundations for a successful career ahead. On average, your horse will spend 4-6 weeks being educated, learning the ins and outs before being given a well-deserved break.

## Spelling

Like us, horses need time to mentally and physically mature. If their Breaking was their Year 12 exams, then Spelling is their Gap Year. On average, they'll spend 2-4 weeks in the paddocks, gaining confidence and continuing to furnish into young adults before heading to one of our training facilities to re-focus on the task at hand. From there, our training team will assess their development over the course of a month and determine if they're better suited to additional time in the paddock or forging ahead with their campaign.



# Tried Horses and Imports.

## The Purchase

The CMR Team have an extensive track record in identifying and acquiring horses with top-line potential, both via the Sales Ring or direct negotiation, transforming them into industry superstars. We travel the world over, having a physical presence at many of the International Sales, working in tandem with an unparalleled network of local bloodstock agents well-versed in the CMR philosophy.

## Overseas Quarantine

Once the ink has dried, we'll arrange for your new purchase to be cared for in local quarantine facilities. This is generally for a period of two weeks, subject to the biosecurity laws of that jurisdiction.

## Flight

Our network of specialist equine freight providers will then arrange for the door-to-door transfer of your horse.

## Domestic Quarantine

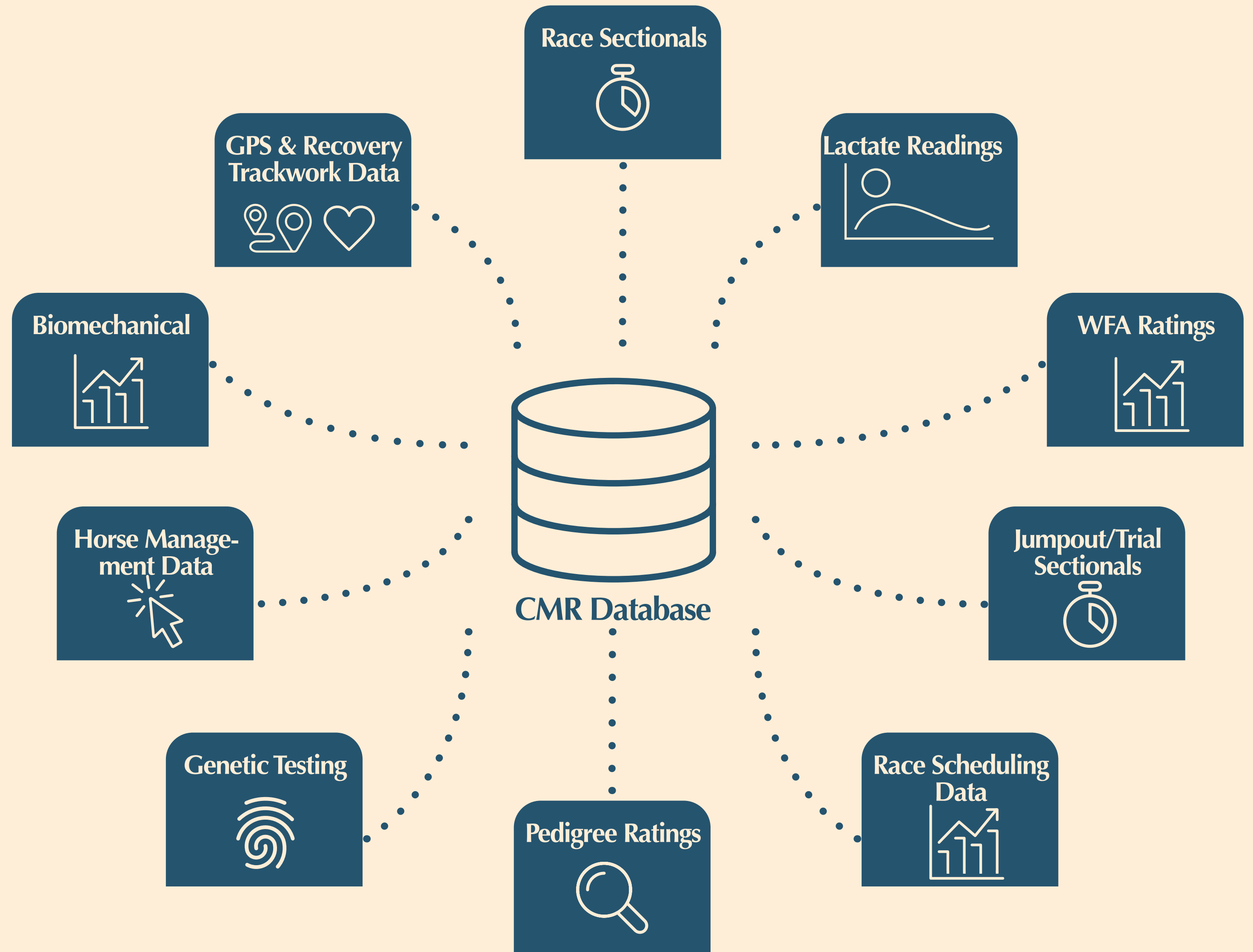
Once the wheels touch down on Australian soil, your horse will then head into domestic quarantine facilities for an additional two weeks. Generally, we utilise the Canterbury International Horse Centre in NSW and the Mickleham Post-Entry Quarantine Facility or Werribee International Horse Centre in VIC. They'll have access to padded boxes, large day yards, sand fibre walking rings, sand rolls, and wash bays as they begin acclimatising to local conditions under bio-security measures in line with the Australian government.

## Stables

Subject to the handling of the journey to this point, they'll then begin integrating into the CMR system at one of our facilities best suited to the individual horse and their forthcoming campaign.





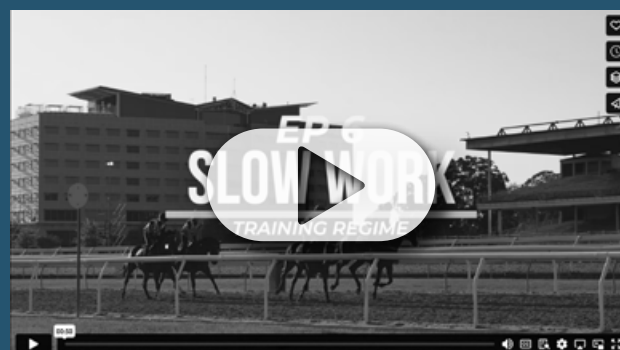




# Training.

## Slow Work

The building blocks, setting the foundations for a horse's fitness base, ranging from a slow trot to a controlled-paced stride.



[Click here for video](#)

## Treadmill

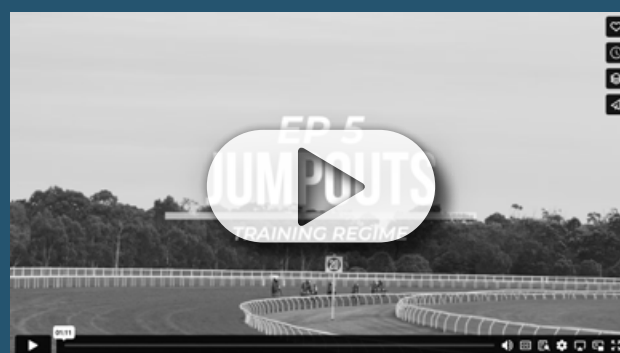
Provides our horses with a heavily controlled galloping environment, affording the team with a training aid that offers an accurate insight into a horse's work and subsequent recovery.



[Click here for video](#)

## Trials/Jumpouts

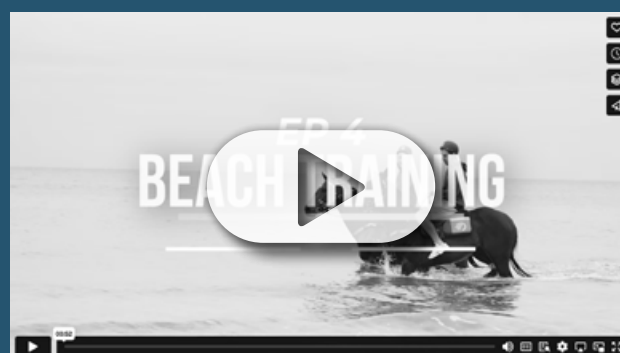
If racing is a horse's game day, then trials and jumpouts are match practice. We use these as a form of race education under semi-competitive conditions, as well as building and retaining their fitness levels.



[Click here for video](#)

## Beach Work

Provides our horses with time in the natural environment, offering them a balanced dose of mental stimulation and relaxation. The time in the salt water helps aid any soreness, allowing our horses to compete to the best of their abilities.



[Click here for video](#)

## Gallops

A horse's bread and butter in building and retaining fitness. The controlled gallop allows the team to monitor a horse's fitness level, action and temperament, which will help us frame a suitable training approach.



[Click here for video](#)

## Hill Training

Provides a relaxed setting that best emulates the natural environment with deep sand and dynamic routes, ensuring horses remain stimulated and fit at a controlled tempo, diminishing the risk of injury. The incline of a hill is also great for building their fitness.



[Click here for video](#)

## Swimming

A technique we use to both build fitness without putting pressure on their legs and to aid a horse's post-work recovery, reducing the downtime required between pieces of work.



[Click here for video](#)

## Freshen

A short, intra-campaign breather that sees our horses afforded time in the paddock. They're kept ticking over, using light training techniques such as the water-walker, which aids in prolonging a horse's campaign and adding sharpness back into their racing.



[Click here for video](#)



[Click for video summary](#)



# Training Fees.

Fee	Daily Rate
Daily In Full-Training Fee	\$170.50
Feed & Supplements	\$7.43
Track Fees	Cranbourne: \$5.50; Warwick Farm: \$8.50
Workcover	VIC: \$2.48
Race Day Staffing	Trial: \$55.00 Race Meeting: \$220
Agistment	VIC: \$44 NSW: \$49.50

The daily full-training fee is for all horses in work at one of our licensed training facilities and includes all costs related to stabling, training, feed, and general maintenance of your horse in our care. Third-party expenses such as farrier and vet will be charged on top of this fee.

Track fees are charged by the host race club and covers upkeep of all facilities including tracks, pools and other amenities. The Workcover surcharge is designed to partially offset the rising Workcover costs in Victoria. NSW has a self-funded model where each starter is charged a small fee.

Raceday staffing covers the cost of strappers taking horses to and from trials and races.

Agistment is a flat daily fee for horses spelling.

Pre-Training covers the early part of base fitness work when a horse comes back in from a spell.



\*All costs above are GST inclusive



# Glossary.

**Acceptance** Having been nominated for a particular race, the team will then assess the depth of the competition in the race, as well as our barrier allocation, the track conditions, and more in determining whether we proceed. Acceptances are the point where we have paid the acceptance fee to the relevant racing authority in that jurisdiction, which is generally a few days out from the race.

**Apprentice** All jockeys start somewhere. Racing in Australia has an apprenticeship program that affords those jockeys with less experience a ‘discounted’ weight to the one the horse should be racing with under the conditions of a particular race. The more wins that jockey accumulates, the lesser the discount. For example, if a horse is required to race at 60kgs and the apprentice is currently claiming 2kgs, then that horse is able to be ridden at 58kgs.

**Black Type** Otherwise known as a “Stakes Race”, this is a race that is categorised as Listed or better (Group 3, Group 2 and Group 1 - the highest).

**Blinkers** The hood that is placed under the bridle, harbouring cups that are designed to sit around the horse’s eyes to restrict their vision of horses located to the side and behind.

**Blow** You’ll hear the team refer to your horse as ‘having a blow’. This is a physical puff following a piece of work or race, akin to what we may display after exercise. This generally suggests that the horse had reached an upper limit of its physical exertion at that particular level of fitness.

**Bridle** A piece of equipment consisting of buckled straps used to control a horse, which fits over the horse’s head to which a bit and reins are attached.

**Breaking In** The process whereby a horse is educated to develop from an unriden horse to one that can be ridden and trained by a highly skilled breaker, who uses techniques such as introducing the horse’s mouth to training and handling apparatuses, long reining, and eventually climbing aboard.

**Broodmare** A female horse that has bred and/or is being used to produce foals.

**Colt** A male horse three years old or under.

**Conformation** The physical makeup of the horse, including its proportions.

**Connections** The owners and trainers of a horse.

**Correct Weight** Once jockeys have weighed in and there are no issues being deliberated by

the Stewards, the race results are then official.

**Dam** The female parent of the horse.

**Emergency** In the case where additional runners that were nominated accept for a race greater than the set field limit allows, then the horses lower on the ratings system will only gain a run if others higher in the ratings are scratched.

**Entire** A male horse that has not been gelded.

**Farrier** A specialist in horse hoof care.

**Far-Side** The right-hand side of the horse.

**Filly** A female horse of three years old or under.

**First-Up** A horse set to run in a race, resuming from a break.

**Forelegs** The front legs of a horse.

**Furlong** Traditional measurement of race distances. Approximately 200m.

**Gelding** A male horse that has previously undergone a castration process.

**Handicap** Races where weights are assigned by the handicapper according to horses’ pastormances, designed to afford each runner with equal winning chances.

**Hindlegs** The back legs of a horse.

**Hindquarters** The rear end of the horse, including its croup, rump and hind legs.

**Juvenile** Two year old horse.

**Lameness** When a horse is said to be displaying lameness, it means it is experiencing some pain in its limbs, which is generally identified when the team is trotting that horse up.

**Maiden** A race set on the condition that all runners are yet to win a race.

**Mare** A female horse of four years old or older.

**Mounting Yard** Generally, it is the circular area adjacent to the track where horses are paraded prior to a race, from where jockeys take their mounts.

**Near-side** The left-hand side of the horse.

**Pedigree** The generational family and breeding of the horse.

**Restricted Race** A race where only certain horses are eligible, such as the Magic Millions series being restricted to those horses purchased at the Magic Millions Sales.

**Scratched** When a horse is withdrawn from a race.

**Second-Up** The next run after the first-up run.

**Silks** The coloured and patterned jacket and cap worn by jockeys in a race to distinguish between runners and ownership groups.

**Sire** The male parent of the horse.

**Sound** A horse healthy and free of any abnormal structural injury.

**Spell** Horses require a number of breaks from work and racing throughout its career as a racehorse. These are referred to as spells.

**Sprinter** A horse that generally races at distance up to 1400m.

**Stakes-Placed** A horse that has run Top 3 in a Black Type race.

**Stayer** A horse that generally races at distances 2000m and above.

**Stewards** The racing officials in each racing jurisdiction responsible for enforcing the rules of racing.

**Strapper** The team member responsible for tending to your horse on raceday, with duties extending to feeding, grooming and leading to and from the mounting yard.

**Stride** The length of the step from the point its hoof leaves the ground to the place it returns to the ground. The greater that length, the more ground it is able to cover in a stride.

**Stud** A farm responsible for the breeding of racehorses.

**Weight-For-Age** A type of race where a horse is allotted a weight on a set scale according to its sex and age. Usually reserved for the better quality races.

**Yearling** A male or female horse between one and two years old.



# Useful Contacts.

## Kent Scholes

Head of Finance

kent@ciaronmaher.com.au

0411 623 703

## Damian Lubeek

Head of Operations (Vic)

damian@ciaronmaher.com.au

0488 663 800

## Ashley Jarvis

Registrations

ashjarvis@ciaronmaher.com.au

0447 269 450

## Albert Park

Corporate HQ

Level 1

120 Bridport Street, Albert Park,  
Victoria 3206

## Ballarat

Training Facility

336 Kennedys Road, Miners Rest,  
Victoria 3352

## Cranbourne

Training Facility

1/101 Grant St, Cranbourne,  
Victoria 3977

## Warwick Farm

Training Facility

3 Hope St Warwick Farm,  
NSW 2170

## Fingal

Training Facility

745 Truemans Road, Fingal,  
Victoria 3989

## Pakenham

Spelling Facility

65 Five Mile Rd, Pakenham South,  
Victoria 3810

## Bong Bong Farm

Training Facility

100 Headlam Road Moss Vale,  
NSW 2577



