



DISC-BED[®]
PRODUCT CATALOG



REST EASY WHEN YOUR BOOTS ARE OFF THE GROUND

Disc-O-Bed® LP
2402 Tech Center Pkwy
Suite 300
Lawrenceville, GA 30043
United States of America

t: +1 770.295.2292
f: +1 678.892.7349

tf: +1 800.613.0910
e: sales@discobed.com



discobed.com

CONTENTS

- 
- 8. Disc-Bunk & Disc-Bed
 - 9. Discobed XL
 - 10. Arm-O-Bunk
 - 11. Arm-O-Cot
 - 12. 2XL
 - 13. Outfitter Chair
 - 15. Footlocker
 - 15. Side Organizer
 - 16. Leg Extensions
 - 16. Footpads
 - 17. Cabinet
 - 17. Trundle
 - 18. Disc Pad
 - 18. Multifunctional Blanket
 - 19. Pillow
 - 19. Sheet
 - 20. IV Stand
 - 20. Mosquito Net & Frame
 - 23. Dek-O-Bed
 - 24. Cholera Bed
 - 25. Medi-Bed with Duraskin
 - 26. ONE Bed
 - 27. Mobile Care Bed
 - 28. Mobile Care Bed Medi-Mat
 - 30. Mobile Care IV Stand
 - 30. Mobile Care Trapeze



Ready to go at a Moment's Notice.

Disc-O-Bed® Answers the Call for Sleep Solutions on the Move. Shelters, EMA & Preparedness.

In an emergency situation, you need a product that works just as hard as you do.

Disc-O-Bed® is a portable, comfortable sleep solution engineered to handle the demands of group shelter. It's also flexible enough to adapt to your needs. Stack **Disc-O-Bed®** cots as bunks to maximize shelter space, so you can keep families together and help even more people in need.





Space-Saving. We know space is at a premium, both when shipping to your area of need and in your shelter. **Disc-O-Bed®**'s lightweight, completely collapsible design means our cots ship virtually flat to fit more per container.

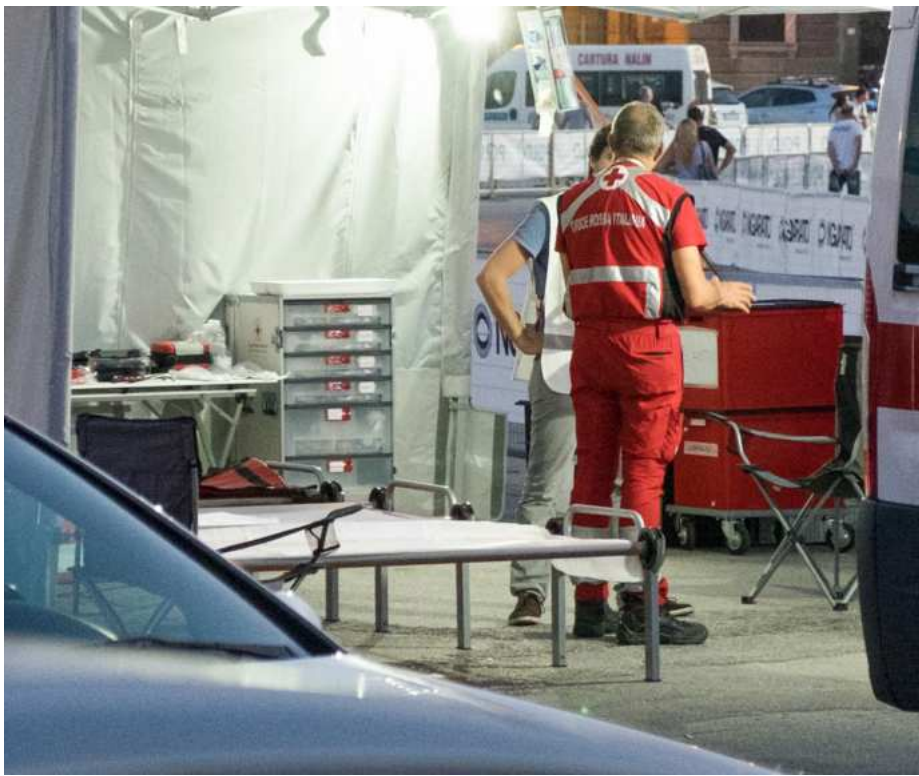
Comfort Mobility. Most of our sleeping decks hold up to 500lbs (227kg) per single cot, without requiring a mid-beam for support. Convert into bench-type seating during the day to make your space feel more "livable".

Easy Set-Up. In a crisis, it's all hands on deck. Response time is critical. You need a product that's convenient for any volunteer to put together. **Disc-O-Bed®**'s user-friendly design features a simple, no-tool assembly for quick set-up.

Hygienic Help. **Disc-O-Bed®** provides a number of unique but specific alternative sleeping deck options. All options offer a removable mat that can be washed to ensure for maximum patient hygiene. The sleeping deck gently cradles the body and provides firm support without the need for a mattress.

Extremely Tough. **Disc-O-Bed®** has been tried and tested in extreme climates and conditions. Constructed with an ultra-strong, rust-resistant steel frame with no middle bar.

Replacement Parts. We understand the challenges of conducting a large-scale operation. The last thing you want to worry about is parts. **Disc-O-Bed®**'s versatile, modular design makes it easy. Simply replace a lost part anytime without having to replace the entire cot.



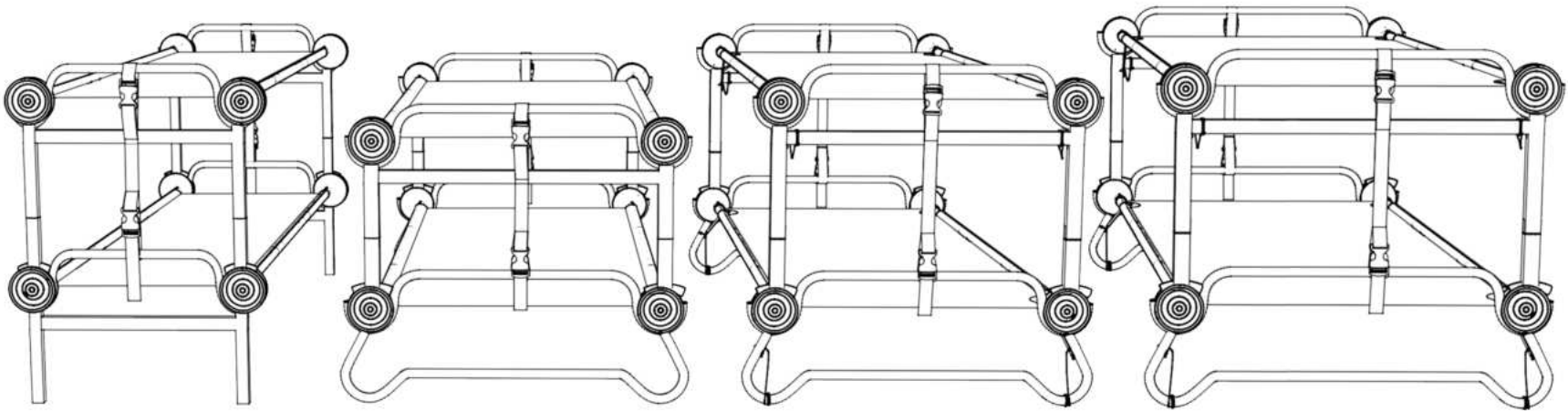
Response Gear for any Situation:

Disc-O-Bed®'s Versatile Bunk Beds

Emergency response just got more comfortable with **Disc-O-Bed®**'s modular disc system. Whether decompressing in your established shelter or at a station, you can rely on the support of **Disc-O-Bed®** to deliver on peaceful rest during times of chaos. **Disc-O-Bed®** can be bunked in your shelter to save space or added to your station for an additional sleeping option.

Versatility / Features Comparison	Disc-O-Bed	Traditional Cot
Mat Color Options - Utilize Color to Designate Area or Usage Purpose	yes	yes
Mat Material Options - General Sleep, Decontamination & Hygienic Solutions	yes	no
Patented - No Tool Assembly/ Quick Assembly	yes	no
Interchangeable Replacement Components - Extended Product Life/Usage/Reusable	yes	no
Comfort - No Midbeam Cross Support Needed	yes	no
Compact Storage - Stores flat in carry bag	yes	yes
Optional Leg Extensions/ Vertical Height Spacers (Straight Frame Beds)	yes	no
Optional Storage Accessories Footlocker, Cabinet, Roller Bag	yes	no

DISC-O-BED SLEEP SYSTEMS SIZE CHART



	Disc-Bunk			Disc-O-Bed XL			Arm-O-Bunk			Disc-O-Bed 2XL		
	L	W	H	L	W	H	L	W	H	L	W	H
Outer Dimensions	82"	32.5"	41"	82"	39.5"	36"	82"	39.5"	43"	87.5"	44.5"	46"
Sleep Area	79"		28"	79"		35"	79"		35"	85"		39.5"
Height of Bottom Cot			16"			11"			16"			15.5"
Height of Top Cot			41"			32"			39"			40"
Bag Dimensions	32"	20"	4"	39.5"	15.5"	4.5"	39"	18"	3.5"	47"	21"	4.5"
Bunk Weight	61.5lbs			62.5lbs			99.5lbs			86lbs		
Weight Tolerance	500lbs			500lbs			600lbs			600lbs		

Disc-Bunk & Disc-Bed

Flexible Relief for Rapid Temporary Shelter and Emergencies.

It's been said that disaster operations are all about logistics. Disc-Bed makes rapid deployment easy for mass care and sheltering. In an emergency, plans can change quickly. You need solutions that are as flexible as you. That's why the no tool Disc-Bunk can be reconfigured three ways to meet all of your shelter needs. Easily use as two single cots, double up to save room or convert to a bench for daytime seating. It also packs flat so you can store and ship and reassemble in new locations. Constructed with ultra-strong steel, it's sturdy yet simple to set up. Topped with a 600-denier polyester sleeping deck that is supportive and comfortable, with no need for a mattress.

- Cost-effective, small footprint reduces need for more housing solutions
- Waterproof backing, mildew and stain resistant
- Alternate mat options - medical grade FR and anti-microbial treated Polyester mat, welded Cholera mat and a Textilene Mesh Mat
- Berry Amendment compliant version available upon request

Available Color Options

- 19803B/ORN | 19803/ORN (Available Upon Request and in EU)
- 13803B/BLK | 13803/BLK (Berry Compliant Only)
- 19803B/GRX | 19803/GRX | Olive (Berry Compliant Available)
- 19803B/TAN | 19803/TAN | Beige (Berry Compliant Available)

SPECIFICATIONS

19803B	Bunk
Bunk Weight	61.5lbs (28kg)
Weight Tolerance	500lbs (227kg) – per single cot
Outer Dimensions	82" (208cm) L x 32.5" (82.5cm) W x 41" (105cm) H
Sleep Area	79" (201cm) L x 28" (70cm) W
Height of Bottom Cot	16" (41cm)
Height of Top Cot	41" (105cm)
Bag Dimensions	32" (81.5cm) L x 20" (52cm) W x 4" (11cm) H

19803	Single Bed
Cot Weight	31lbs (14kg)
Weight Tolerance	500lbs (227kg)
Outer Dimensions	82" (208cm) L x 32.5" (82.5cm) W x 20.5" (52cm) H
Sleep Area	79" (201cm) L x 28" (70cm) W
Height of Cot	16" (41cm)
Bag Dimensions	32" (81.5cm) L x 20" (52cm) W x 4" (11cm) H



Disc-O-Bed® XL

Camping Just Got More Comfortable.

The modular **Disc-O-Bed® XL** is the perfect choice for accommodating more sleepers in a limited space. Specifically designed with the outdoor enthusiast in mind, it is unbelievably durable but also extremely comfortable.

Available Color Options

- 31002 XL Single, No Organizers (Import)
- 31502 XL Single, No Organizers (Import)
- 31002B XL Bunk, No Organizers (Import)
- 31502B XL Bunk, No Organizers (Import)



SPECIFICATIONS

Bunk	
Bunk Weight	62.5lbs (28kg)
Weight Tolerance	500 lbs (227kg) - per single cot
Outer Dimensions	82" (208cm) L x 39.5" (100cm) W x 36" (92cm) H
Sleep Area	79" (201cm) L x 35" (88cm) W
Height of Bottom Cot	11" (29cm)
Height of Top Cot	32" (81cm)
Bag Dimensions	39.5" (100cm) L x 15.5" (39cm) W x 4.5" (11cm) H

Single	
Outer dimensions	82" (208cm) L x 39.5" (100cm) W x 15.5" (39cm) H
Sleep area	79" (201cm) L x 35" (88cm) W
Height of cot surface	11" (29cm)
Weight tolerance	500lbs (227kg)



Arm-O-Bunk®

A Sleep Solution for the Toughest Conditions.

Recognized by all NATO countries, including the U.S. Department of Defense for its long history of military service, providing the best sleep solution for any warfighter. It provides comfortable sleep in all austere environments, including naval ships, aircraft alert shelters, transient lodging, LP-Ops and FOBs. The patented disc system is the secret behind the strength, comfort and mobility of our cots. Footlockers provide under bunk storage that is secure, organized and within arm's reach. The Arm-O-Bunk® stays strong through the entire battle, is easy to assemble, bunk, dismantle and transport at the ready.

- Supplied with outer carry bag for easy hauling
- Naval ships, aircraft alert shelters, transient lodging, LP-Ops, and FOBs
- Available with or without footlockers
- Berry Amendment compliant version available upon request
- Available in OD Green, both Imported and Berry
- Available in Berry Compliant or Import Versions

Available Color Options

- OD Green
- Tan

SPECIFICATIONS

19793MB no footlocker (NSN #7105-01-554-7405)

Pack Weight	81lbs (37kg)
Weight Tolerance	600lbs (272kg) - per single cot
Outer Dimensions	82" (208cm) L x 39.5" (100cm) W x 43" (110cm) H
Sleep Area	79" (201cm) L x 35" (88cm) W
Height of Bottom Cot	16" (40cm)
Height of Top Cot	39" (99cm)
Bag Dimensions	39" (100cm) L x 18" (45cm) W x 3.5" (9cm) H
Outer Bag Dimensions	40" (102cm) L x 20" (51cm) W x 10" (25cm) H

19793MBF w/footlocker (NSN #7105-01-552-2705)

Pack Weight	99.5lbs (45kg)
Weight Tolerance	600lbs (272kg) - per single cot
Outer Dimensions	82" (208cm) L x 39.5" (100cm) W x 43" (110cm) H
Sleep Area	79" (201cm) L x 35" (88cm) W
Height of Bottom Cot	16" (40cm)
Height of Top Cot	39" (99cm)
Bag Dimensions	39" (100cm) L x 18" (45cm) W x 3.5" (9cm) H
Outer Bag Dimensions	40" (102cm) L x 20" (51cm) W x 10" (25cm) H



Arm-O-Cot®

A Sleep Solution for the Toughest Conditions.

Recognized by all NATO countries, including the U.S. Department of Defense for its long history of military service, providing the best sleep solution for any warfighter. It provides comfortable sleep in all austere environments, including naval ships, aircraft alert shelters, transient lodging, LP-Ops and FOBs. The patented disc system is the secret behind the strength, comfort and mobility of our cots. Footlockers provide under bunk storage that is secure, organized and within arm's reach. The Arm-O-Bunk® stays strong through the entire battle, is easy to assemble, bunk, dismantle and transport at the ready.

- Supplied with outer carry bag for easy hauling
- Naval ships, aircraft alert shelters, transient lodging, LP-Ops, and FOBs
- Available with or without side organizers
- Berry Amendment compliant version available upon request
- Available in OD Green, both Imported and Berry
- Available in Berry Compliant or Import Versions

Available Color Options

- OD Green
- Tan



SPECIFICATIONS

19793SN	
Cot Weight	35.5lbs (16kg)
Weight Tolerance	600lbs (272kg) per single cot
Outer Dimensions	82" (208cm) L x 39.5" (100cm) W x 18" (46cm) H
Sleep Area	79" (201cm) L x 35" (88cm) W
Height of Cot	16" (40cm)
Bag Dimensions	39" (100cm) L x 18" (45cm) W x 3.5" (9cm) H



Disc-O-Bed® 2XL

The bigger, the better! Meet our taller, wider and longer sleep system.

If you're big or tall, roughing it takes on new meaning. Will a cot be supportive? Will your feet dangle over the edge? Our impressively comfortable and sturdy sleep system has a generous 85" (216cm) large sleeping deck, holds 600lbs (272kg) per mat and is as easy to get in and out of as your bed at home. As roomy as it is, it also packs down to next to nothing for easy transport. The Outfitter 2XL features head and foot rests and durable webbing on the included side organizers elevating this Special Edition to new heights.



SPECIFICATIONS

31507B

Bunk Weight	86lbs (39kg)
Weight Tolerance	600 lbs (272kg) - per single cot
Outer Dimensions	87.5" (222cm) L x 44.5" (113cm) W x 46" (117cm) H
Sleep Area	85" (215cm) L x 39.5" (100cm) W
Height of Bottom Cot	15.5" (39cm)
Height of Top Cot	40" (102cm)
Bag Dimensions	47" (119cm) L x 21" (53cm) W x 4.5" (11cm) H



Outfitter Chair

Heavy Duty, For Our Biggest Outdoor Enthusiasts.

Designed with the same attention to strength, durability and convenience as our **Disc-O-Bed®**, the Disc Chair will withstand tough conditions to provide mobile seating. Even with its rugged steel frame, our portable chair remains portable and light. It assembles in minutes; no tools needed. When it's time to move on, it disassembles flat and conveniently stores in its own protective canvas carry bag for easy transport.

- Extremely strong and durable with a weight capacity of 500lbs
- Military-proof and NATO approved
- Modular, portable, compact and ultra strong
- Patented disc system allows for quick, no tool or screw assembly



SPECIFICATIONS

51029	
Chair Weight	15.5lbs (7kg)
Weight Tolerance	500lbs (227kg)
Outer Dimensions	23" (58cm) L x 24" (61cm) W x 34" (87cm) H
Seat Area	23" (58cm) L x 22" (55cm) W
Height of Seat	17" (43cm)
Bag Dimensions	23.5" (57cm) L x 25" (63cm) W x 3.5" (9cm) H



CAMP ACCESSORIES

Footlocker



Keep Your Gear Dry, Secure and Organized.

- Lockable with multiple compartments and outside pockets for grab-and-go items
- Fits perfectly under your **Disc-O-Bed®** to maximize floor space
- Fully disassembles in seconds, folds flat and takes no room to store
- Spot clean with warm water and mild detergent



Available Color Options

■ Green ■ Black ■ OD Green ■ Tan

SPECIFICATIONS	
19812 - Import 19812M - Berry Compliant (NSN# 8145-01-588-4719)	
Weight	7lbs (3kg)
Outer Dimensions	29" (74cm) L x 24" (61.5cm) W x 8.5" (21.5cm) - 5.5" (14cm) H Tapered
Pack Dimensions	29" (74cm) L x 12" (30cm) W x 3.5" (9cm) H



Side Organizer



Keeps Necessities Within Arm's Reach.

- Attaches directly to sleeping deck with hook-and-loop straps
- Open and zippered pockets to hold requisite duty gear and personal items
- Includes a sleeve for rifle
- Spot clean with warm water and mild detergent



Available Color Options

■ Green ■ Black ■ Tan ■ OD Green

SPECIFICATIONS	
19808 - Import 19808M - Berry Compliant (NSN# 8145-01643-9547)	
Weight	1.5lbs (.68kg)
Outer Dimensions	58" (147cm) L x 13" (32cm) W
Pack Dimensions	10" (25cm) L x 14" (35.5cm) W x 2" (5cm) H

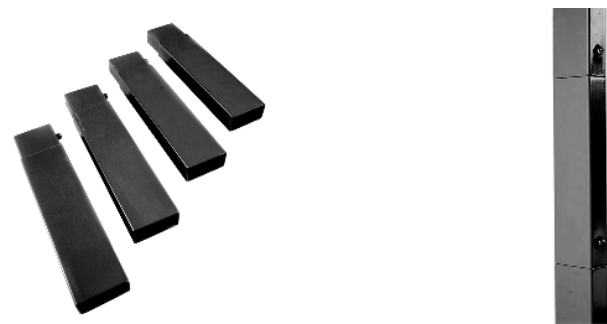


Leg Extentions



Extra Height when You Need it Most.

- Add extra vertical height between cots or increase height of a single cot
- Increases height by 7" (18cm) on all straight bed end frames (not rounded)
- Easily attaches with a U-clip design that fits snug and secure
- Compatible with all **Disc-O-Bed®** cot systems (not Kid-O-Bunk®)



Available Color Options
Tan Silver Black

SPECIFICATIONS	19802
Weight (set of 4)	3.5lbs (2kg)
Outer Dimensions	9" (23cm) L x 2" (5cm) W x 1" (2.5cm) H
Pack Dimensions	9" (23cm) L x 2" (5cm) W x 4" (10cm) H

Footpads



Puts Everyone on Equal Footing.

- Adds stability and evenly distributes weight
- Quick clip on and off design fitting snug to four bed ends
- Prevents ground sinking and rubberized polymer won't damage floors
- Textured finish prevents sliding on slick surfaces
- Compatible with all **Disc-O-Bed®** and Kid-O-Bunk® cot systems



SPECIFICATIONS	19847N
Weight (set of 4)	1.5lbs (0.7kg)
Outer Dimensions	4" (10cm) L x 4" (10cm) W x 1.5" (4cm) H
Pack Dimensions	9" (22cm) L x 5" (13cm) W x 2" (6cm) H

Cabinet



Practical. Portable. Perfect storage.

- Snaps on easily to any **Disc-O-Bed®** end frame or use where needed
- No tool assembly with lockable zip-close design
- Keeps belongings and essentials secure and off the ground
- Interior shelves with movable dividers and outer pockets for extra storage
- Fully disassembles, packable design and easy to clean



Available Color Options

■ Green ■ Black

SPECIFICATIONS 19813	
Weight	9lbs (4.5kg)
Outer Dimensions	10" (36cm) - 13.5" (34cm) L (tapered) x 23" (59cm) W x 31" (79cm) H
Pack Dimensions	23.5" (59cm) L x 14" (35.5cm) W x 4" (10cm) H

Trundle



There's Always Enough Room for One More.

- Transition your bunk from day to night with a trundle cot
- Increase sleeping options – without compromising your overall space
- Two height options using included leg extensions
- When not in use, slide under **Disc-O-Bed® XL** and **Disc-O-Bed® 2XL**
- Fully disassembles into zippered carry bag for easy transport and storage



SPECIFICATIONS 31508	
Cot Weight	26lbs (12kg)
Weight Tolerance	300lbs (136kg)
Outer Dimensions	75" (191cm) L x 39.5" (100cm) W x 10" (25cm) H
Sleep Area	72" (183cm) L x 35" (88cm) W
Height of Cot	6" (15cm)
Bag Dimensions	39.5" (100cm) L x 11" (28cm) W x 4" (11cm) H

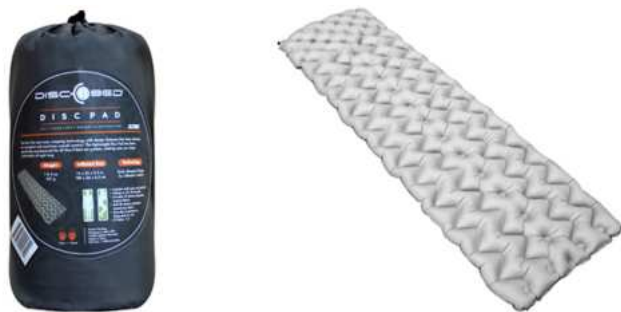
The included leg extensions increase the height by 7" (18cm)

Disc-Pad



Maximize Your Sleeping Comfort.

- Custom designed, inflatable sleeping pad by Klymit for **Disc-O-Bed®**
- Unique body mapping technology for maximum comfort and support
- Soft polyester top; durable, non-slip polyester bottom side
- Super light, compact design for easy packing and transport
- Compatible with all **Disc-O-Bed®** cot systems



SPECIFICATIONS		L 50001
Weight	1.5lbs (.7kg)	
Inflated	74" (188cm) L x 22" (56cm) W x 2.5" (6cm) H	
		XL 50021
Weight	2lbs (.9kg)	
Inflated	74" (188cm) L x 30" (76cm) W x 2.5" (6cm) H	

Multifunctional Blanket



Stay Warm in Style.

- Blanket, sleeping bag, poncho, pillow – all in one!
- Snap fasteners: can be expanded with any additional blankets, also to make a double sleeping bag
- Dirt repellent coating outside and soft fleece on the inside



SPECIFICATIONS		50009
Weight	2.6lbs (1.2kg)	
Dimensions	80" (203cm) L x 54" (137cm) W x .75" (2cm) H	
Pack Dimensions	5" (13cm) L x 5" (13cm) W x 14" (36cm) H	

Pillow



Rest Your Head.

- Lightweight and Supportive
- Soft Washable Cover
- Packable for Easy Travel



Available Color Options

■ 50108 Orange
 ■ 50308 Tan
 ■ 50008 Gray
 ■ 50208 Ocean Plaid

SPECIFICATIONS

Packed Weight	9.9 oz (0.3 kg)
Packed Size	6.5 in. (16.5 cm) L X 6.5 in. (16.5 cm) W X 9 in. 23 cm H
Pillow Size	17 in. (43 cm) L X 11.5 in. (29 cm) W
Material	100% Polyester

Sheet



Fitted Protection for Clean Comfort.

- Washable and Hygienic
- High quality snaps to keep in place
- Custom sizes for all **Disc-O-Bed®** Systems



Material:

50% polyester / 50% cotton

SPECIFICATIONS

KOB: 50057	Weight 6.3oz (0.2kg)	61.5" (156cm) L X 28.5" (72cm) W
L/XL: 50017	Weight 9oz (255 g)	77" (212 cm) L X 35.5" (104 cm) W
2XL: 50077	Weight 10.6oz (300 g)	83.5" (212 cm) L X 41" (104 cm) W

IV Stand



Converts Any Disc-O-Bed® into a Field Hospital Bed.

- Instantly converts any **Disc-O-Bed®** into a portable triage or treatment bed
- Manufactured to medical height specifications
- Simple, quick bed-mounted design ensures IV stays with the patient
- Compatible with all single **Disc-O-Bed®** cot systems



SPECIFICATIONS		19809
Dimensions	27" (68.5cm) L X 9" (22cm) W	
Weight	1.5 lbs (.7kg)	


Mosquito Net & Frame



Sleep Easy while Protecting You and Your Family.

- Simple, no tool design is highly effective in all-around bug protection
- Tethered so it stays put with tightly woven netting
- Simply and quickly attaches directly to the bed end frame
- Compatible with all Disc-O-Bed® bunk or single cot configurations (not Kid-O-Bunk®)
- Zippered opening to gain easy access, storage bag included



SPECIFICATIONS		19810 - Import 19810M - Berry Compliant (NSN #5411-01-643-0615)	
Weight	2.5lbs (1.5kg)		
Outer Dimensions	82" (208cm) L x 32-39.5" (81-100cm) W x 30-34" (76-86cm) H		
Tapered and varies according to system/cot being fitted			
Pack Dimensions	33" (84cm) L x 6" (15cm) W x 5" (13cm) H		



EMERGENCY RELIEF

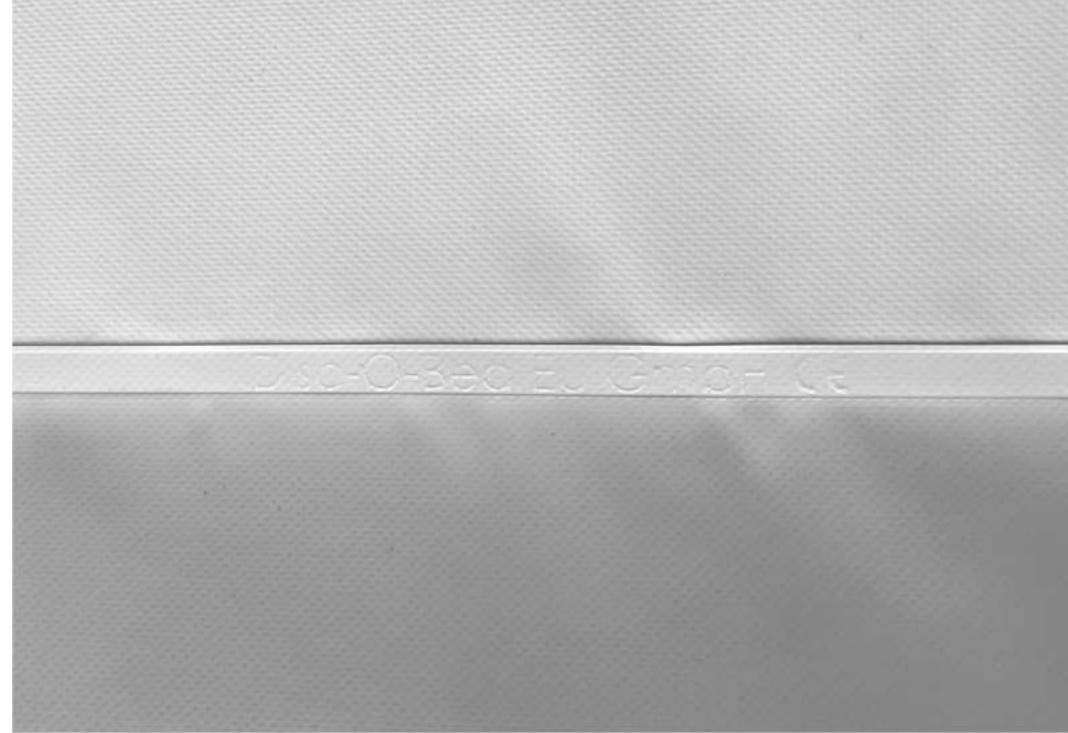


About Our Fabric

High-quality Coated Fabrics to Satisfy the Highest Demands of Both Hygiene and Durability.

Disc-O-Bed® offers a wide range of products featuring our Duraskin mats. Duraskin is a specialized material, made in Germany, that features a high-strength polyester scrim - for ultimate performance and hygiene.

- CPSIA compliant and CE certified
- Impermeable mat with ultrasonically welded construction
- Tear and water resistant
- No threads or sew lines
- PVC coated mat with acrylic lacquer top coat
- Cradles the body for support and comfort
- Can be easily cleaned and disinfected
- Electronically welded seams



Dek-O-Bed

A Unique Solution For the Most Critical Situations.

The Dek-O-Bed was specifically designed to meet the challenges of the decontamination or cleaning of persons that cannot stand. Whether fighting infectious disease or battling exposures to hazardous substances and chemicals, the Dek-O-Bed provides a unique solution. The mat features multiple small holes that allow liquids to drain easily. The German made mat is tear resistant and free from Phthalates.

- Both bed and mat can easily be disinfected
- Ultrasonically welded mat eliminates thread and sew lines
- Extremely durable with a weight tolerance of 350lbs
- Ideal for meeting the needs of non-ambulatory patients in need of decontamination



SPECIFICATIONS

19796L

Cot Weight	31lbs (14kg)
Weight Tolerance	350lbs (158kg)
Outer Dimensions	82" (208cm) L x 32.5" (82.5cm) W x 20.5" (52cm) H
Sleep Area	79" (201cm) L x 28" (70cm) W
Height of Cot	16" (41cm)
Bag Dimensions	32" (81.5cm) L x 20" (52cm) W x 4" (11cm) H



Cholera Bed

Designed to be an Ultra-hygienic Sleeping Solution and Treatment Surface.

The Cholera-Bed is a solution for the toughest of conditions and already proven effective for helping patients in outbreak situations. Designed specifically to handle the extremes of disaster relief, it has been used extensively in Cholera and Ebola response efforts across the globe. To ensure maximum patient hygiene, the thick, comfortable mat is completely impermeable and waterproof. For quick, in-field sanitization, simply spray or dip in chlorine solutions mixed according to regulatory standards.

- CPSIA compliant and CE certified
- Mat is impermeable with ultrasonically welded construction - no threads or sew lines
- Mat features a 8" (20cm) diameter cut out hole with impermeable welded seam (bucket not included)



SPECIFICATIONS

19803C

Cot Weight	31lbs (14kg)
Weight Tolerance	350lbs (159kg)
Outer Dimensions	82" (208cm) L x 32.5" (82.5cm) W x 20.5" (52cm) H
Sleep Area	79" (201cm) L x 28" (70cm) W
Height of Cot	16" (41cm)
Bag Dimensions	32" (81.5cm) L x 20" (52cm) W x 4" (11cm) H



Medi-Bed With Duraskin

Simple, Comfortable and Reliable Patient Protection.

As a health crisis spreads, the Medi-Bed with Duraskin is ready to help you swiftly accommodate surge situations. Its compact footprint allows you to expand your existing capacity by fitting more beds in less space. Medi-Bed with Duraskin assembles quickly without tools and the German fabricated PVC coated mat with its Acrylic lacquer top coat is not only tear and water-resistant, but is also ultra-hygienic for patient bathing – simply sanitize and reuse.

- Effective in Cholera outbreaks
- Protective carry bag for warehousing and rapid redeployment
- Quick sanitization, simply spray/dip in chlorine solutions mixed according to regulatory standards



SPECIFICATIONS

19796	
Cot Weight	31lbs (14kg)
Weight Tolerance	350lbs (159kg)
Outer Dimensions	82" (208cm) L x 32.5" (82.5cm) W x 20.5" (52cm) H
Sleep Area	79" (201cm) L x 28" (70cm) W
Height of Cot	16" (41cm)
Bag Dimensions	32" (81.5cm) L x 20" (52cm) W x 4" (11cm) H



ONE Bed (Available Upon Request)

The New Standard for Cots.

Our Disc-O-Bed® ONE is the hygienic, durable and cost-efficient solution for any situation. Not only is it easy to clean, the removable mat can also be swapped easily. The tool-free assembly is very easy – no effort required! The Disc-O-Bed® ONE combines function with comfort and hygiene and also convinces with its small pack size which allows a maximum of beds on pallets.

Available Upon Request-Special Order Only

- Very hygienic due to removable mat
- Small pack size
- Durable and comfortable



SPECIFICATIONS

30731	Large
Cot Weight	26.5lbs (12kg)
Weight Tolerance	330lbs (150kg)
Outer Dimensions	82"(208cm) L x 31"(78cm) W x 21"(53cm) H
Pack Dimensions	31"(79cm) L x 10.5"(27cm) W x 8"(14.5cm) H
Sleep Area	79"(201cm) L x 26"(66cm) W
Height of Cot	16.5"(42cm)

30732	XL
Cot Weight	31lbs 14kg)
Weight Tolerance	330lbs (150kg)
Outer Dimensions	85.5"(217cm) L x 38"(97cm) W x 21"(53cm) H
Bag Dimensions	39"(99cm) L x 15"(39cm) W x 4.5"(11cm) H
Sleep Area	82.5"(210cm) L x 33.5"(85cm) W
Height of Cot	16.5"(42cm)



Mobile Care Bed

Simple, Comfortable and Reliable Performance for Your Patients.

- **Durable.** The Disc-O-Bed® Mobile Care Bed's frame is constructed of powder coated steel and has a weight tolerance of 500lbs.
- **Portable.** The Disc-O-Bed® Mobile Care Bed has 4 rolling and swiveling casters for easy patient transport. Each caster has a locking mechanism for safety.
- **Innovative.** The Disc-O-Bed® Mobile Care Bed has the smallest pack size in its category and can be easily stored and shipped for rapid deployment. Assembly is quick and easy and all required tools are provided.
- **Functional.** The Disc-O-Bed® Mobile Care Bed's pneumatic adjustable head and back rest allows you to adjust the angle of the patient to meet their treatment needs.
- **Modular.** Disc-O-Bed® Mobile Care Bed's modular design and part-based system makes it easy to extend the life of your bed. The removable, washable mat allows for easy cleaning.
- **Versatile.** The Disc-O-Bed® Mobile Care Bed has removable side rail arm rests. The four casters can be removed to create a lower, stationary bed.
- **Customizable.** Optional accessories are available upon request and include mattress, IV stand, and trapeze.



SPECIFICATIONS

19890

Shipping weight	91 lbs (41kg)
Packed dimensions	39.5" (100cm) L x 26.5" (67cm) W x 7.5" (19cm) H
Packed weight	85 lbs (38.5kg)
Assembled dimensions	86" (218cm) L x 41" (104cm) W x 40" (102cm) H
Bed weight	79 lbs (36kg)
Weight Tolerance	500lbs (227kg)
Sleep Surface	81" (206cm) L x 34" (86cm) W
Height of Sleep Surface	30" (75.5cm)



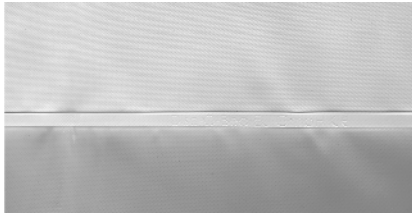
Mobile Care Bed With Medi-Mat

Hygienic and Functional for any Circumstance, from Field Hospital to In-Home Care.

- **Durable.** The Disc-O-Bed® Mobile Care Bed with Medi-Mat's frame is constructed of powder coated steel and has a weight tolerance of 500lbs. For quick sanitation of the Medi-Mat, simply spray/dip the mat in chlorine solutions mixed according to regulatory standards.
- **Portable.** The Disc-O-Bed® Mobile Care Bed has 4 rolling and swiveling casters for easy patient transport. Each caster has a locking mechanism for safety.
- **Innovative.** The Disc-O-Bed® Mobile Care Bed with Medi-Mat has the smallest pack size in its category and can be easily stored and shipped for rapid deployment. Assembly is quick and easy and all required tools are provided.
- **Functional.** The Disc-O-Bed® Mobile Care Bed pneumatic adjustable head and back rest allows you to adjust the angle of the patient to meet their treatment needs.
- **Hygienic.** The Disc-O-Bed® Mobile Care Bed with Medi-Mat features the German fabricated PVC coated mat, with it's acrylic lacquer top coat is ultrasonically welded which makes it water resistant but also ultra-hygienic for patient bathing- simply sanitize and reuse.
- **Versatile.** The Disc-O-Bed® Mobile Care Bed has removable side rail arm rests. The four casters can be removed to create a lower, stationary bed.
- **Customizable.** Optional accessories are available upon request and include mattress, IV stand, and trapeze. The Medi-Mat is also available as a separately sold accessory item.

SPECIFICATIONS

19890M	
Shipping weight	91 lbs (41kg)
Packed dimensions	39.5" (100cm) L L x 26.5" (67cm) W x 7.5" (19cm) H
Packed weight	85 lbs (38.5kg)
Assembled dimensions	86" (218cm) L x 41" (104cm) W x 40" (102cm) H
Bed weight	79 lbs (36kg)
Weight Tolerance	500lbs (227kg)
Sleep Surface	81" (206cm) L x 34" (86cm) W
Height of Sleep Surface	30" (75.5cm)





FIELD HOSPITAL ACCESSORIES

Mobile Care Bed IV Stand



Convert your Disc-O-Bed® Mobile Care Bed into a Field Hospital Bed.

- The Mobile Care Bed IV Stand features 3 rotating hooks
- Attaches directly to the Mobile Care Bed end frame
- Extra tall pole to ensure head clearance
- Compatible only with **Disc-O-Bed®** Mobile Care Bed



SPECIFICATIONS		19809MCB
Dimensions		50" (127.5cm) L X 9" (22cm) W
Weight		2.5 lbs. (1.1kg)

Mobile Care Bed Trapeze



Increase your patient's bed mobility.

- Attaches to the Mobile Care Bed side rail and locks securely in place
- Heavy duty design, made from the same steel as our bed frame
- Allows patients the freedom to lift and reposition themselves independently
- Features accessory hook for optional IV attachment point



SPECIFICATIONS		19809T
Dimensions		63" (160cm) L X 21" (53.5cm) W
Weight		5 lbs. (2kg)



DISCOBED®

discobed.com