

A modern, multi-story office building with a dark facade and large windows. The ground floor features a prominent red 'RETAIL' sign. Two people are walking on the sidewalk in the foreground. The sky is a mix of purple and blue, suggesting dusk or dawn. The building is situated in an urban environment, with other buildings visible in the background.

Medical & Office  
Space For Lease

240  
Eglinton  
Ave East



VALUE INSIGHT  
REALTY  
REAL ESTATE ADVISORY GROUP



# Welcome to the Neighbourhood

On behalf of the Landlord, Value Insight Realty Inc. (the “Advisor”) is pleased to offer for lease 240 Eglinton Avenue East (the “Property”), a prime commercial (medical/office) opportunity located in the heart of Toronto’s vibrant Yonge-Eglinton neighbourhood. The Property is ideal for retail, medical, or professional office uses, and benefits from strong street visibility and foot traffic.

Surrounded by a dynamic mix of high-rise residential towers, established businesses, and top-rated restaurants, the Property sits within one of Midtown’s most in-demand urban hubs. The Yonge-Eglinton area is home to a diverse and highly educated demographic, with convenient access to public transit, abundant green space and a strong live-work-play lifestyle.

The neighbourhood continues to grow with a steady influx of young professionals and families, offering a consistent customer base and long-term growth potential. This is a unique opportunity to secure a flexible and high-exposure space in one of Toronto’s most dynamic and evolving communities.





# Transit Connectivity

## Eglinton Crosstown Light Rail Transit

The new LRT will bring improved service and connectivity, linking 54 local bus routes, three TTC interchange subway stations, and GO Transit. Located steps away from the future Eglinton Crosstown LRT Line, the Site will benefit from reliable rapid transit service. Spanning 19 km, the Crosstown will be faster than streetcars, buses, or even the downtown subway. The LRT will include 25 stations from Kennedy in the east to Mount Dennis in the west.





# Demographics

## 2023 Demographics Snapshot (2km radius)



Total Population

107,997



Daytime Population

103,517



Total Household Income

\$188,920



Median Age

39.3



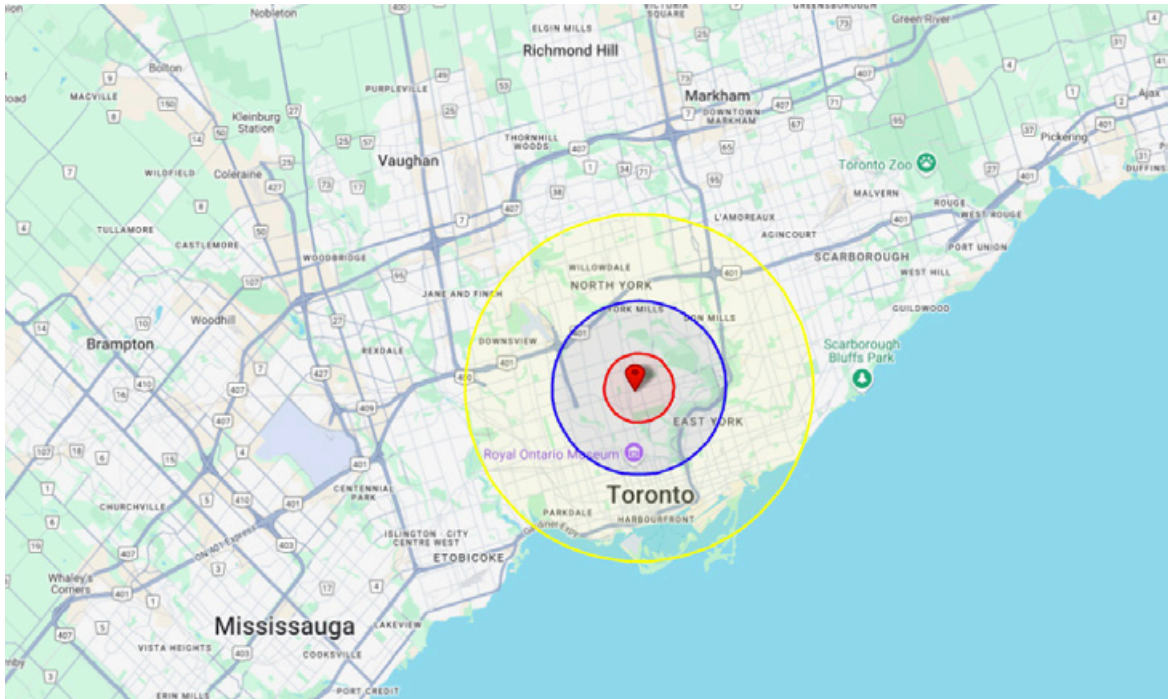
Transit Score

87



Walk Score

97



### Population

	2 km	5 km	10 km
2023 Population	107,997	534,351	1,878,306
2028 Population	118,606	581,394	2,010,576
Annual Growth 2023-2028	3.9%	3.4%	2.8%



# Local Businesses





# The Property

## Office or Medical Space in the Heart of Midtown

240 Eglinton Avenue East, a five-storey building located in Toronto's growing midtown area, is a fully-renovated office building serving professional and medical users.



## Building Specifications

**Size:** 23,000 sq.ft. (divisible)

**Type:** Office + Medical

**Year Built:** 1967 (2025 renovated)

**Number of Floors:** Five

**Possession:** Available

**Additional Rent:** \$16.85/sq.ft.

## Building Features

- Adjacent to new Mount Pleasant LRT Station (Line 5)
- Walking distance to Grocery and Retail
- Surrounded by Restaurants
- Nearby public/private parking
- Bike parking & repair facility on-site
- Passenger elevator (AODA compliant)
- Meditation/prayer room
- Fiber optic connectivity
- Secure Entry System + CCTV
- Outdoor amenity coming in 2026
- Ideal for: office, school/tutoring, fitness, medical, health & beauty
- Signage Opportunity on Eglinton

# Leasing Opportunities

## 3rd Floor

3rd Floor: Suite 301 – **Leased**

3rd Floor: Suite 302 – up to 2,200 sq.ft.

## 2nd Floor

Full Floor, divisible – up to 6,000 sq.ft.



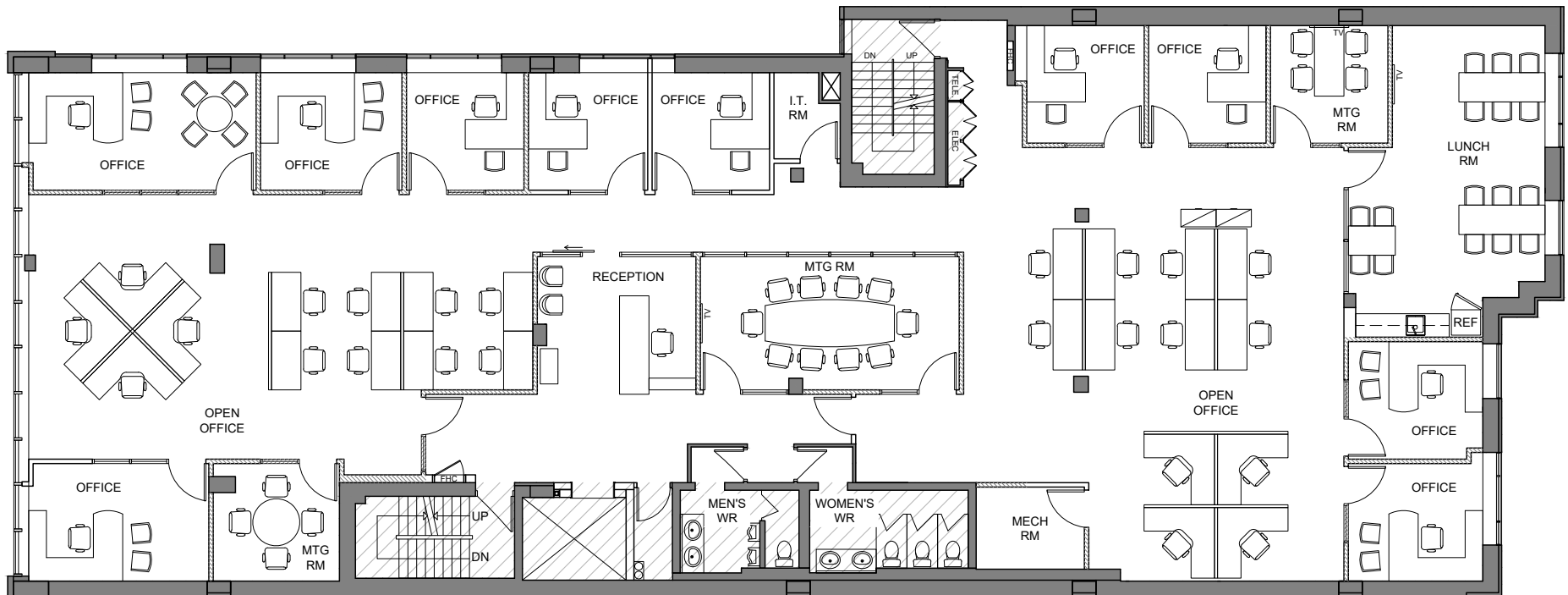
# Second Floor

Full Floor Tenancy

Type: **Office & Medical**

Size: **6,000 sq.ft.**

Ceiling Height: **~12'**

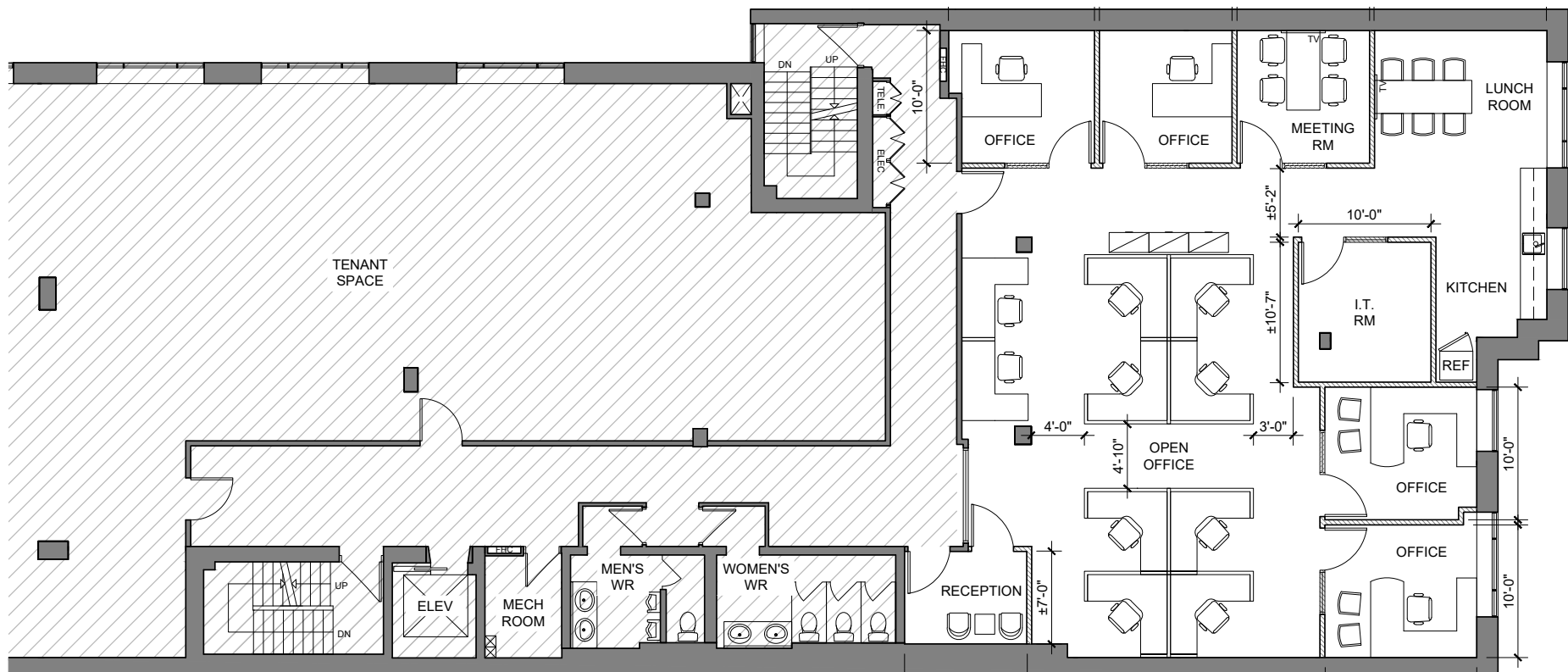




## Suite 302

Ceiling Height: **~12'**

**2,200 sq.ft. (divisible)**



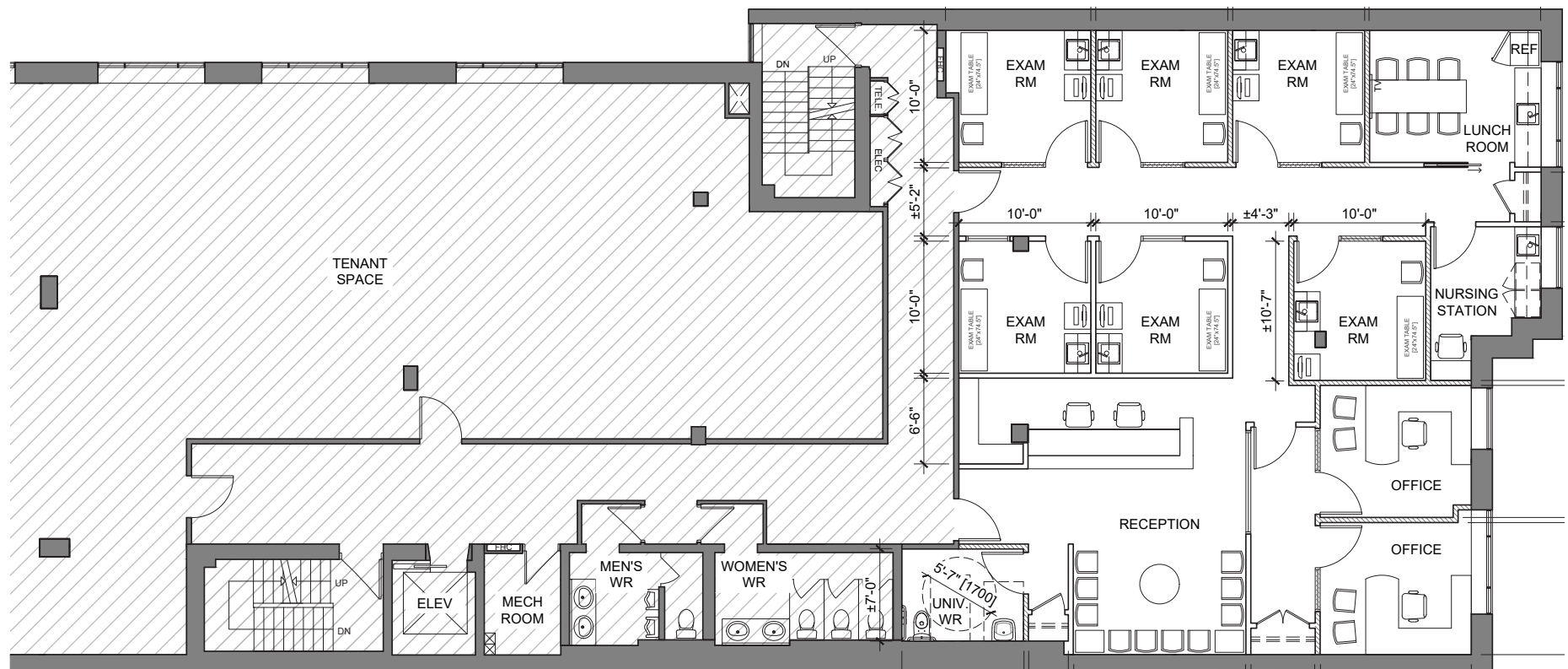


## Suite 302

Type: **Medical**

Size: **6,000 sq.ft.**

Ceiling Height: **~12'**





# Renderings





# The Listing Team

## **SARI SAMARAH\***

President & CEO

416.269.6747 x 101

sari.samarah@valueinsightrealty.com

## **ELI VLADIMIRSKY\*\***

Director | Advisory & Transaction Services

416.269.6747 x 105

eli.vladimirsky@valueinsightrealty.com

NO WARRANTY OR REPRESENTATION, EXPRESS OR IMPLIED, IS MADE AS TO THE CONDITION OF THE PROPERTY (OR PROPERTIES) REFERENCED HEREIN OR AS TO THE ACCURACY OR COMPLETENESS OF THE INFORMATION CONTAINED HEREIN, AND SAME IS SUBMITTED SUBJECT TO ERRORS, OMISSIONS, CHANGE OF PRICE. \*Broker of Record | \*\*Sales Representative

**valueinsightrealty.com**