

1285 Queen St. E. Toronto #7-8

EXCEPTIONAL
RETAIL
OPPORTUNITY
IN THE
HEART OF
LESLIEVILLE

FOR SALE

#8

#7



VALUE INSIGHT
REALTY
REAL ESTATE ADVISORY GROUP

valueinsightrealty.com

1285 Queen Street East #7-8 Toronto



Property Details

TYPE	For Sale		
	UNIT 7	UNIT 8	UNITS 7 & 8 COMBINED
SIZE	2,331 sq.ft.	1,748 sq.ft.	4,079 sq.ft.
PRICE	\$1,689,000	\$1,289,000	\$2,899,000
TAXES (2025)	\$18,405.16	\$14,762.80	\$33,167.96
ANNUAL MAINTENANCE FEES	\$8,239.68	\$6,385.80	\$14,625.48

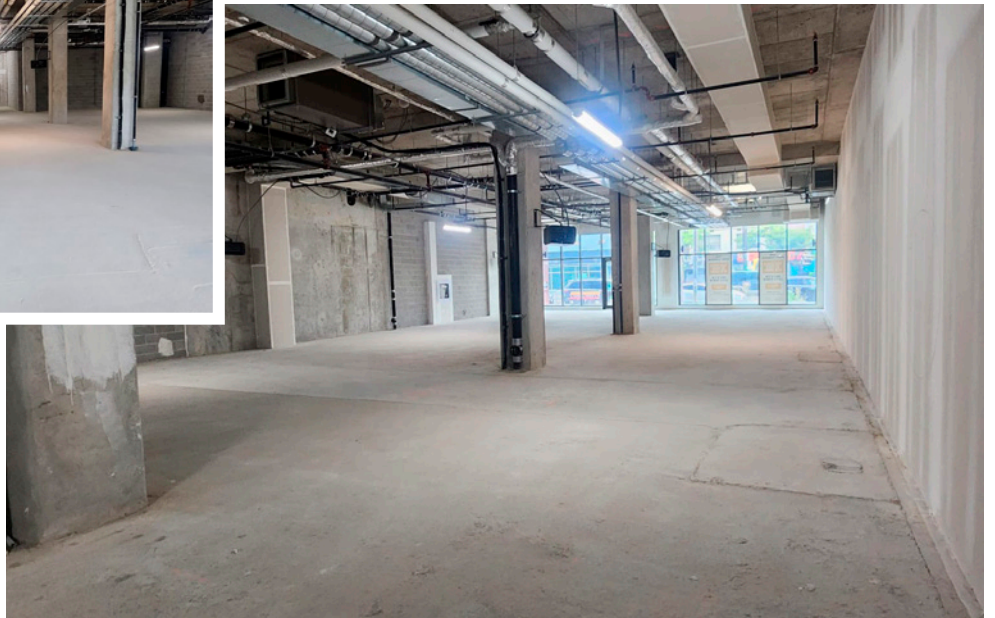


Property Highlights

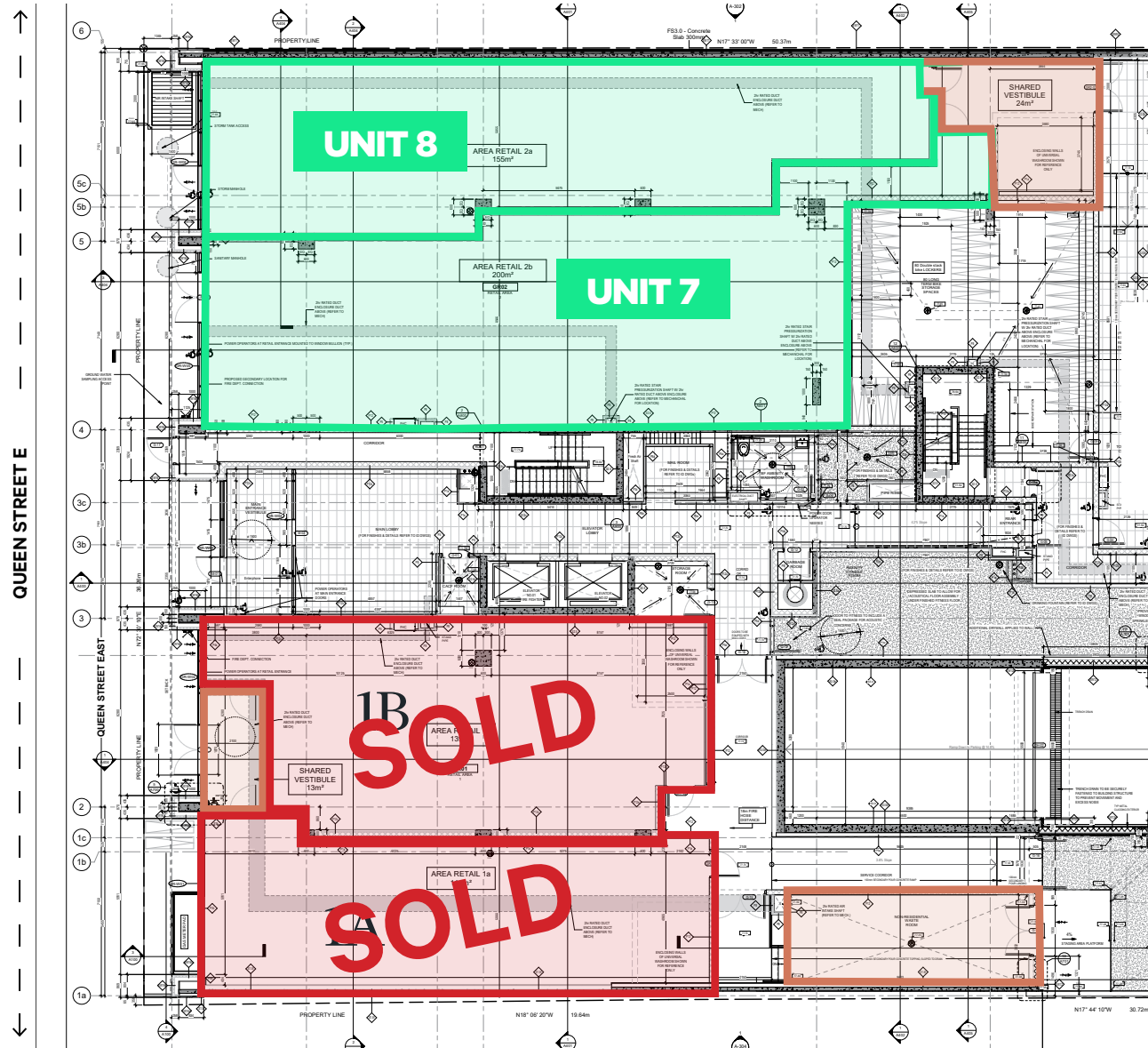
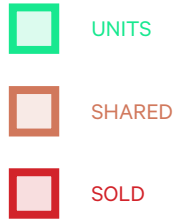
- Prime ground floor retail condominium at the prestigious Poet Condominiums, part of a highly sought-after commercial complex.
- The gross leasable square footage also includes a portion of the vestibule, enhancing the presence and accessibility of the unit.
- The property offers excellent visibility, steady foot traffic, and strong neighbourhood demographics.
- Ideal for retail, medical, food, wellness, health and beauty, or service uses.
- A rare chance for both investors and end-users to secure a flagship location in one of Toronto's most vibrant communities.



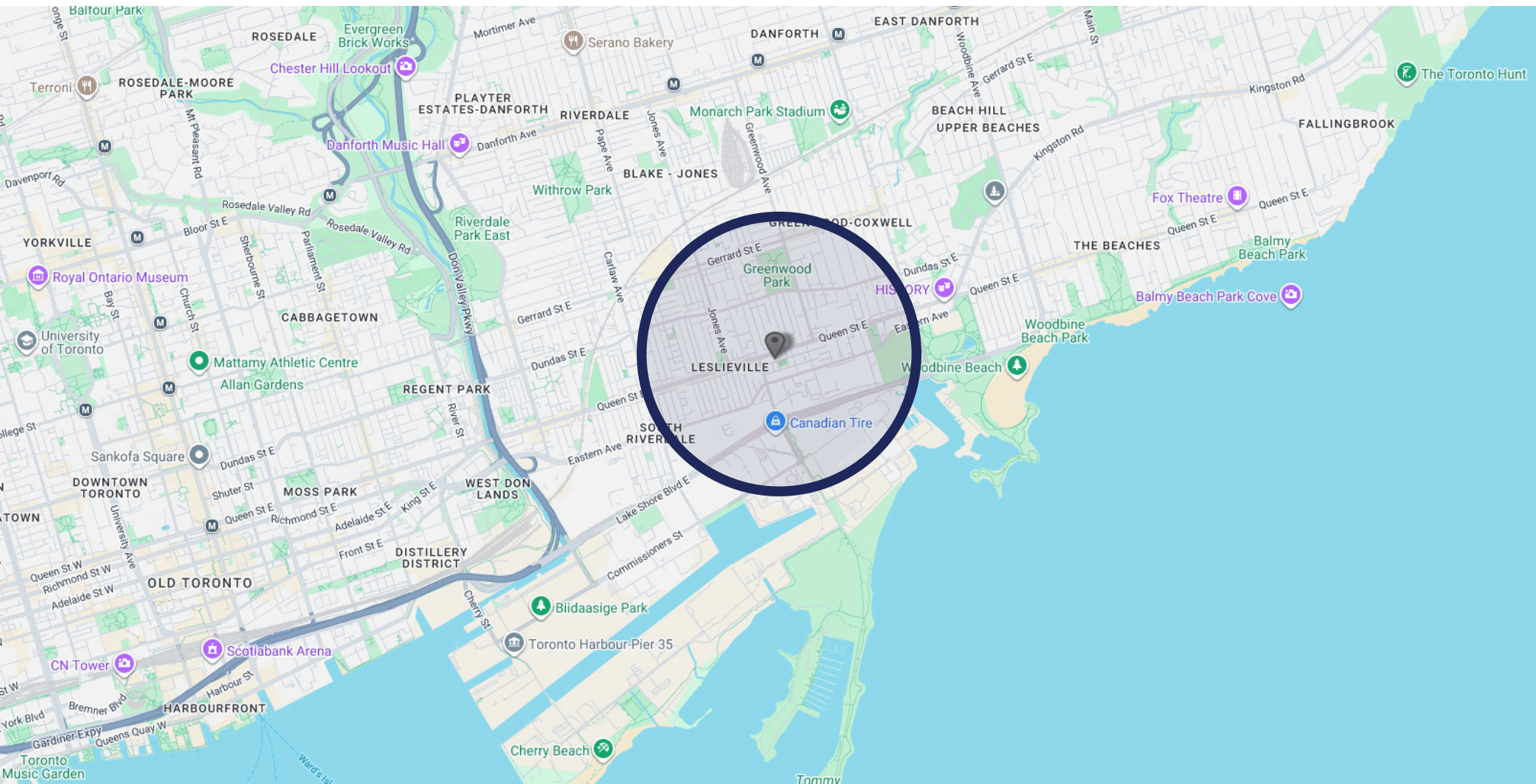
1285 Queen Street East #7-8 Toronto



1285 Queen Street East #7-8 Toronto



1285 Queen Street East #7-8 Toronto



AREA DEMOGRAPHICS

Within 1 km radius of property



POPULATION
21,371



AVERAGE INCOME
\$160,232*

* Annually per household



MEDIAN AGE
39.3

**LANDLORD & DEVELOPER
SERVICES:**

SARI SAMARAH*

President & CEO

416.269.6747 x101

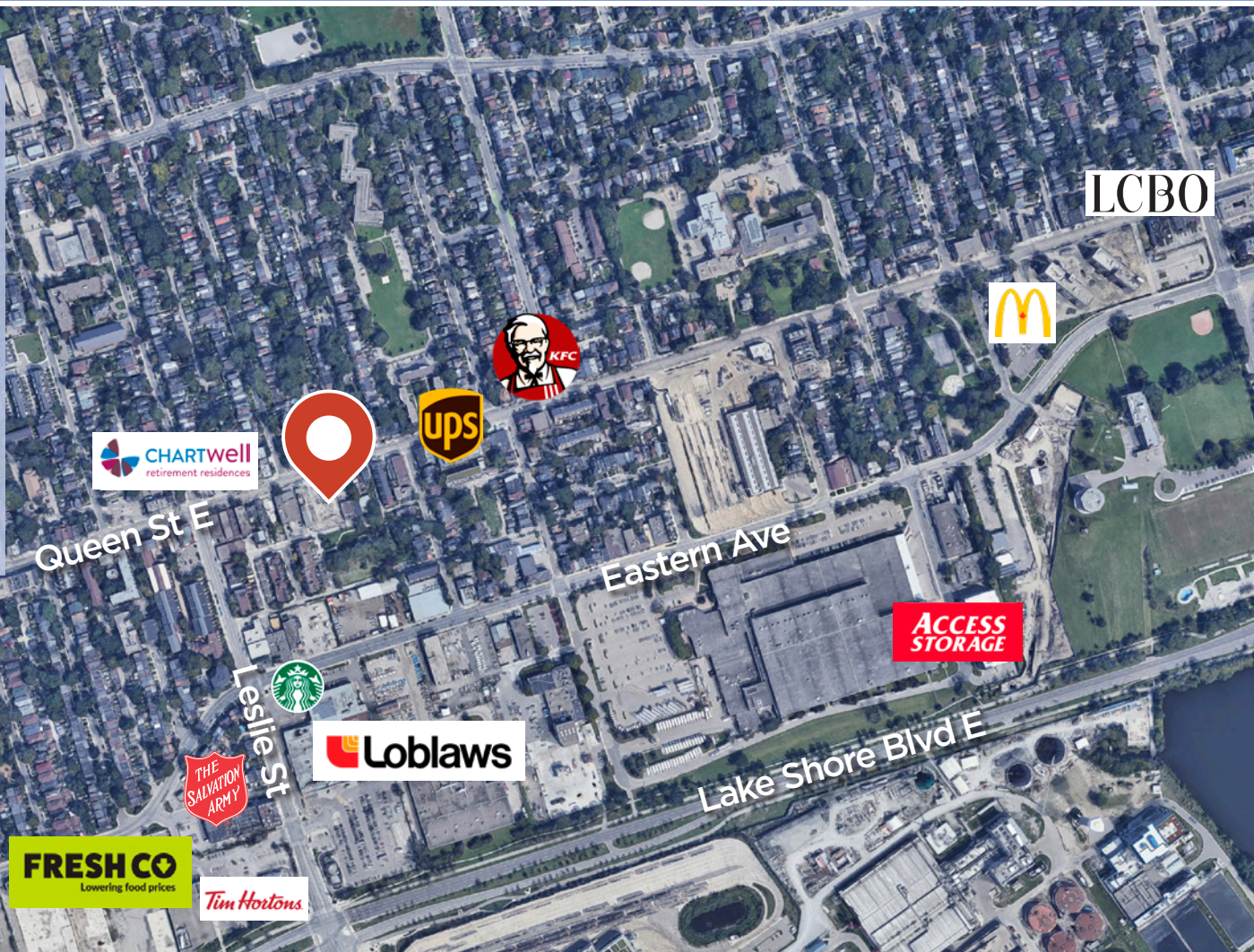
sari.samarah@valueinsightrealty.com

BEVERLY WILSON**

Director of Retail Sales & Leasing

416.269.6747 x109

beverly.wilson@valueinsightrealty.com



valueinsightrealty.com

© 2025 Value Insight Realty Inc. | Brokerage

No warranty or representation, expressed or implied, is made as to the accuracy of the information contained herein, and same is submitted subject to errors, omissions, change of price, rental or other conditions, withdrawal without notice, and to any specific listing condition, imposed by the property owner(s). *Broker of Record