

# 1050 BROCK RD, #7, PICKERING

For Lease | Prime industrial/commercial unit



**VALUE INSIGHT**  
REALTY  
REAL ESTATE ADVISORY GROUP

# 1050 Brock Road, #7 Pickering

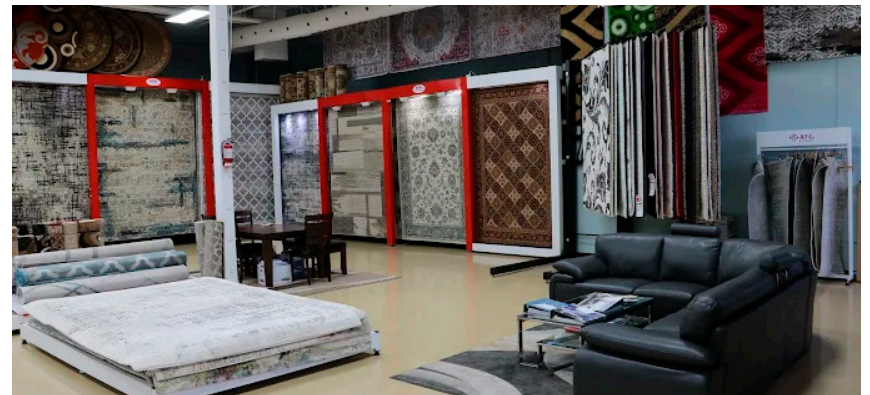
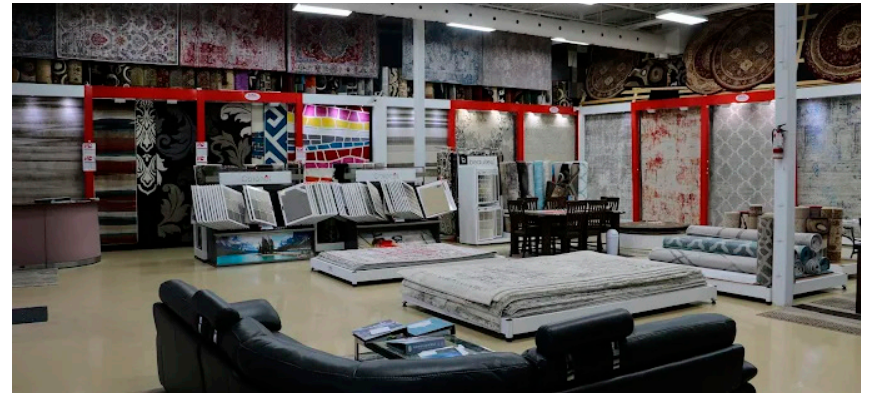


## Property Details

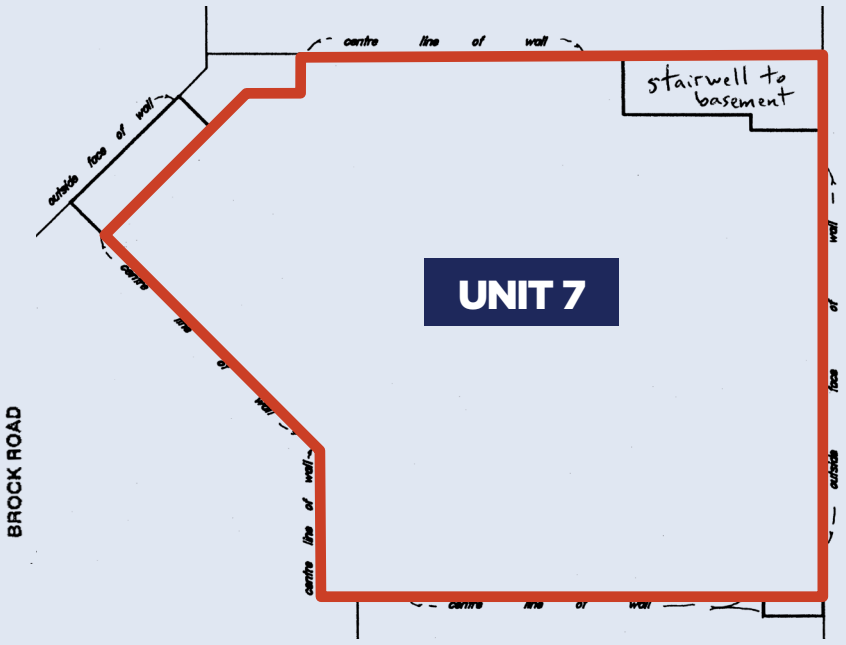
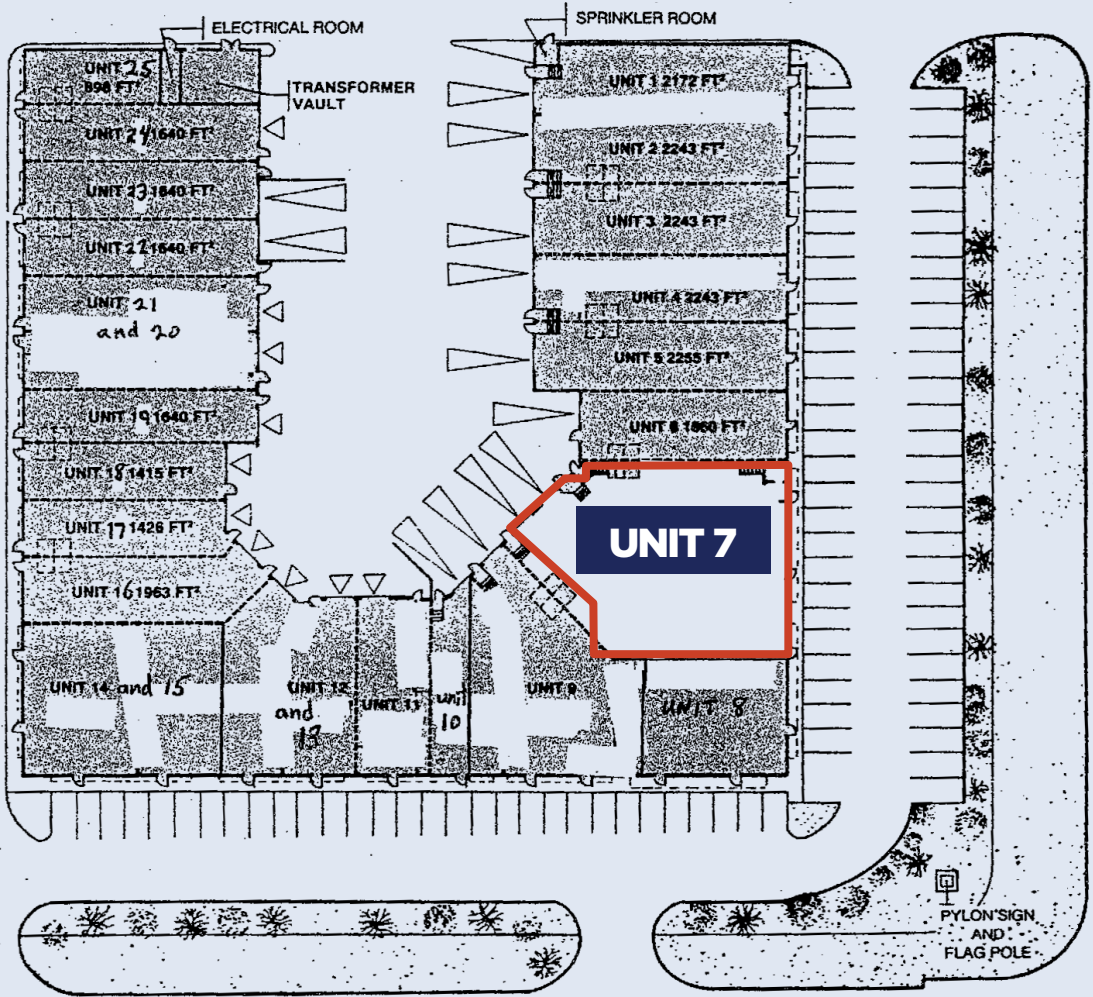
<b>TYPE</b>	For Lease
<b>SIZE</b>	4,561 SF (ground)   6,731 SF (basement)
<b>RENT</b>	\$19.50/sq.ft. (ground)   \$1/sq.ft. (basement)
<b>TMI</b>	\$7.81/sq.ft.
<b>AVAILABILITY</b>	June 1, 2026

## Property Highlights

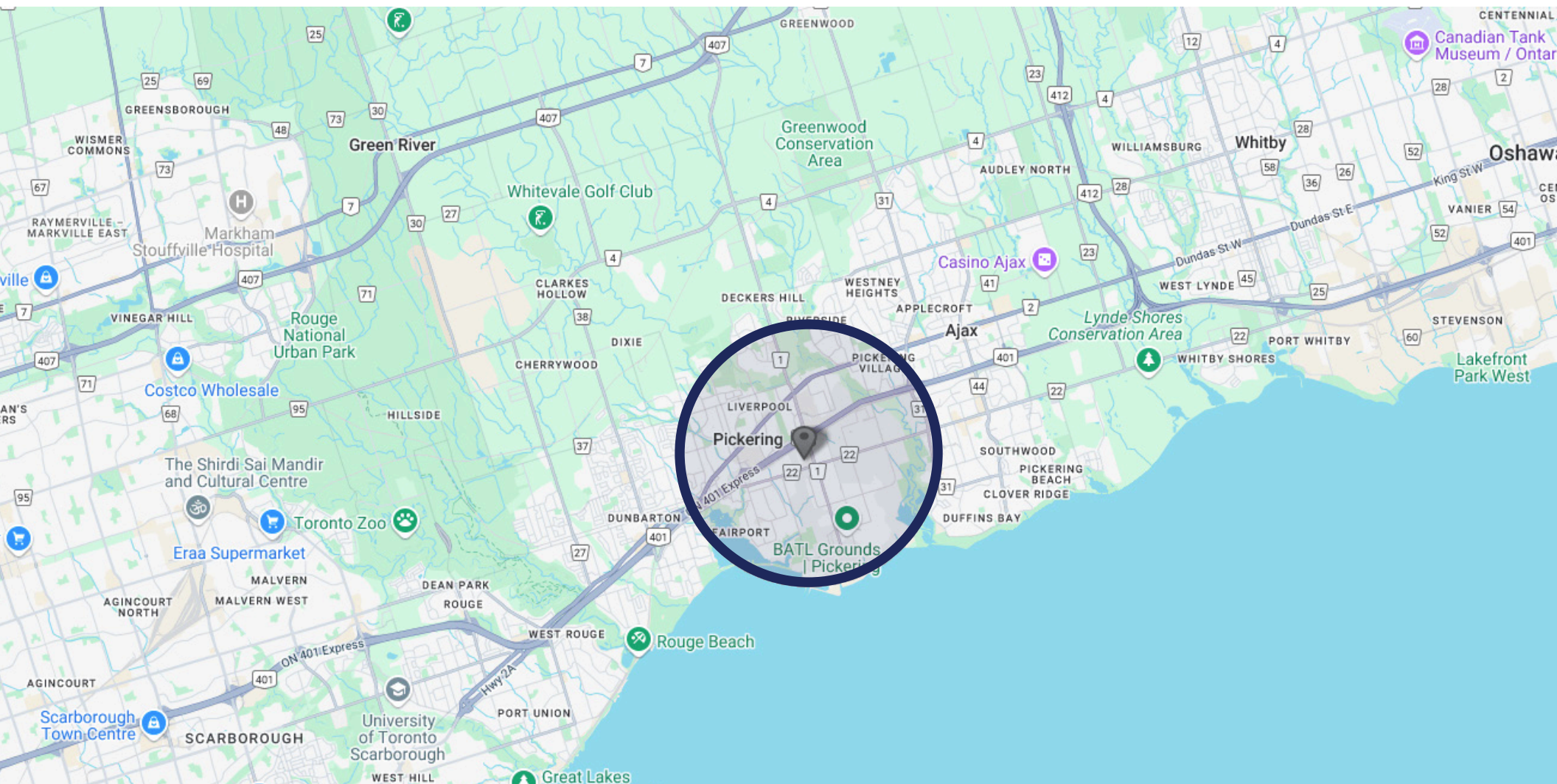
- Prime industrial/commercial inline unit located in the highly sought-after Pickering Business Park, just seconds from Highway 401
- Situated in an established commercial corridor with strong neighbouring tenants and easy customer access
- Versatile space ideal for light industrial, showroom, warehouse, or service-based users
- Inline retail space with over 47 feet of street frontage on Brock Road, offering excellent visibility and branding opportunities
- Features 17'3" clear height, providing flexible racking and storage potential
- Equipped with a truck-level shipping door for efficient logistics and deliveries
- Previously occupied by King Carpets & Rugs, well-suited for a wide range of business operations



# 1050 Brock Road, #7 Pickering



# 1050 Brock Road, #7 Pickering



## AREA DEMOGRAPHICS

*Within 3km radius of property*



POPULATION  
**45,698**



AVERAGE INCOME  
**\$131,392\***

*\* Annually per household*



MEDIAN AGE  
**41.4**



**LANDLORD & DEVELOPER SERVICES:**

**SARI SAMARAH\***

President & CEO

416.269.6747 x101

sari.samarah@valueinsightrealty.com

**DANIEL KERSHEN\*\***

Senior Vice President

416.269.6747 x 102

daniel.kershen@valueinsightrealty.com