

20
25



Mesa Global

ANNUAL REPORT

AROUND
THE TABLE.

SHARING JOY.

MULTIPLYING
GENEROSITY.



Table of Contents

Note from our President	3
Mesa Global's Mission & Values	4
Impact at a Glance	5
Where we Serve	6

Joy in Serving

Ministries of Mesa Global	8
Stories from the Field: Oaxaca, Mexico	9
Caring for our Mesa Workers	
Spiritual Formation	10
Member Care	11
Leadership Development	11

Joy in Collaborating

Updates from our Regional Training Hubs	13
Impact Stats	14
Stories from the Field: Nepal	15

Joy in Partnership

Scholarship Recipient Testimonial	17
---	----

Joy in Generosity

Stories of Generosity	19
Donor Testimonial	20
Board of Directors	21
Financials	22
Looking Ahead with Joy	23



Dear Mesa Global Partners,

The theme of this Annual Report is joy. Joy may be in short supply today, but it is prevalent in the Bible. And it starts with God. My favorite glimpse of our joyful God is Luke 15.

Jesus is sharing a meal with people who are far from God—or at least far from God’s people. He is criticized for associating with sinners. So, he tells three stories: the lost sheep, the lost coin, and the lost son. In each case, something is lost, and when it is found, there is great rejoicing. Then Jesus says, “In the same way, there is rejoicing in the presence of the angels of God over one sinner who repents.” Jesus goes on to picture God as a gracious Father welcoming everyone to a great celebration for his lost son who has returned home!

As you read this Annual Report, you could interpret the stories and numbers as the results of the strategies and efforts of our organization. And, of course, we honor our missionaries and partners around the world for their faithful service.

A better way to interpret these results, though, is to see that God is at work among the nations. If you listen, you can almost hear the celebration going on in the Father’s house. And you can hear his invitation to come and rejoice with him! Alleluia!



John Bernard

President & CEO, Mesa Global



Our Mission

Equipping servant leaders with the church for God's mission.

We best fulfill our calling when we serve with the global church to equip local believers for ministry. As we help plant churches and do evangelism, assist ministries of mercy and justice, and contribute to theological education and training, we seek the holistic formation of current and emerging leaders.

THIS IS WHAT WE DO. JOY IS HOW WE DO IT.



Our Values



Seek God First

We prayerfully seek God's Kingdom and presence, desiring to be transformed by the Spirit into the likeness of Jesus and empowered for his mission.



Partner for Mission

We serve alongside churches and missional partners globally, reflecting the unity and interdependence of the body of Christ.



Never Stop Learning

We commit to continuous learning with our global mission family and local co-workers, forming communities of learning for innovative and contextual ministry.



Infuse Equipping in Everything

We strive to equip faithful servants for leadership through who we are and all we do.



Commit to Community

We seek to follow Jesus' way of love and servanthood, nurturing healthy, mutually supportive relationships and valuing the interests of others before our own.

IMPACT AT A GLANCE

We work to see the gospel take root across cultures.

We celebrate the opportunities, big and small, that God has given us to participate in his kingdom work. The scale of our ministry varies from intimate discipleship relationships with a handful of people, to far-reaching and fast-moving digital evangelism. One story of impact not captured in the metrics below is an Easter outreach based on short-form videos in both Arabic and Farsi that resulted in almost 145k reactions, comments, and shares! We engage in a wide range of ministries, from church multiplication to pastoral training, from community and business development to anti-sex trafficking work. In all we do, we prioritize partnership with locally-led churches and ministries because we desire impact that is sustainable, leaders who are equipped, and relationships that shape us to be more like Christ!



47,599

**People Equipped
Through Mentoring
& Discipleship**



12,663

**Leaders Equipped
Through Education &
Training Ministries**



35,246

**Leaders Equipped
Through Partner
Ministries**



57,774

**People Served Through
Mercy, Compassion, &
Development Ministries**



5,154

**New Churches
Planted**

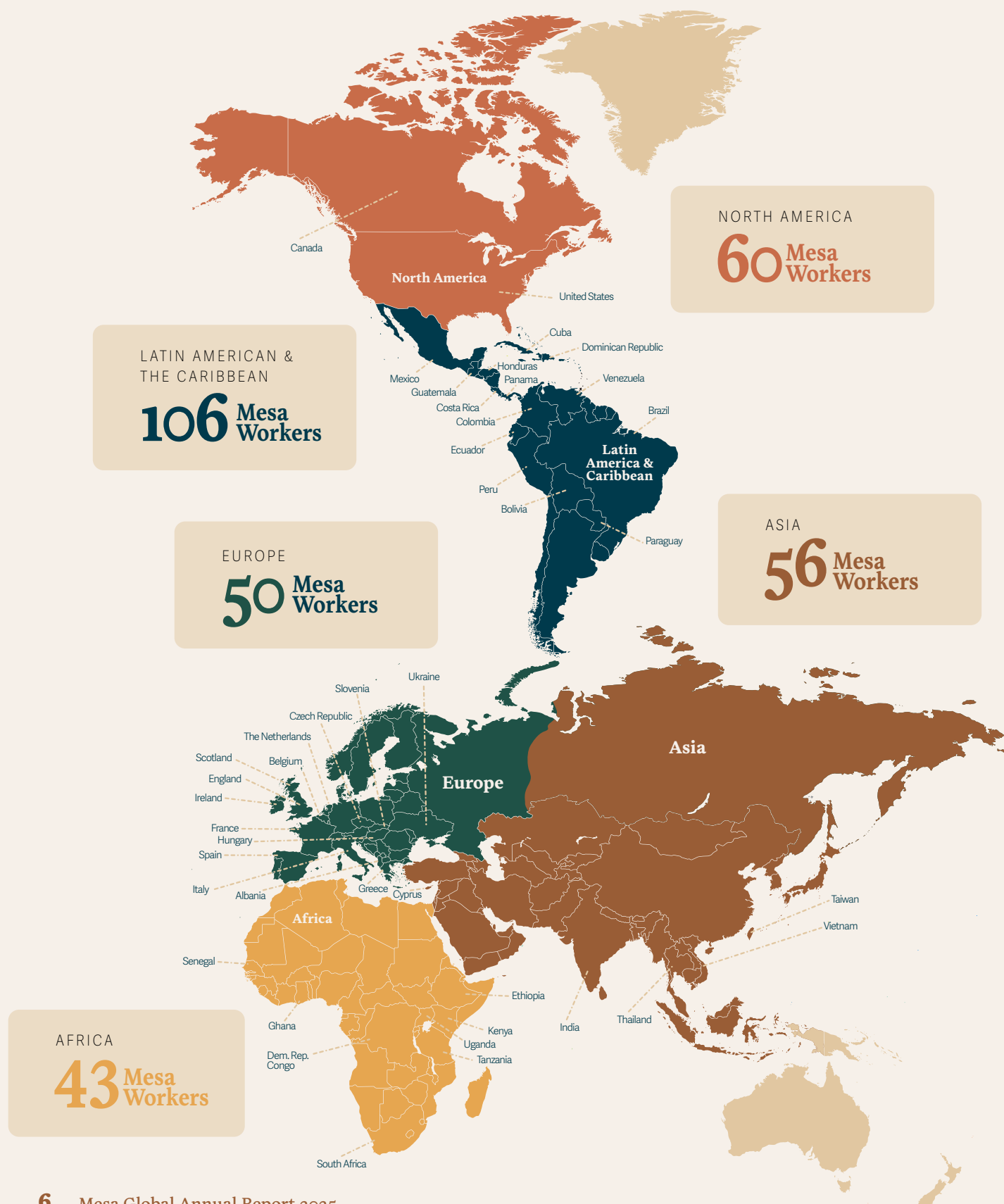


13,133

**Churches
Strengthened**

Joy of the Nations

Mesa Workers live in 47 countries in 5 different geographic regions across the globe, bringing the joy of the gospel to their nations, communities, and neighborhoods.



Joy in Serving

Your generosity brings joy
through hands that serve,
caring for those God loves
and sharing the Gospel.





Our Around the Table Approach

Around the world starts around the table. Our approach is built on long-term relationships and partnerships in the global body of Christ. We seek to equip local leaders by modeling and mentoring as we do grassroots ministry together. We teach in classrooms and non-formal settings and facilitate collaborative training networks. Ultimately, our goal is to see flourishing churches in every place embodying Jesus' love for every person.



Regional Training Hubs

Mesa's five **Regional Training Hubs** strengthen our global network of more than 130 seminary and training partners and connect them with churches across each region. Each Hub team includes **experienced theological education leaders** from each region and serves as a center for collaboration, research, and specialized training for educators and trainers. The goal is to make biblical training accessible to men and women already in ministry, yet outside the reach of current programs.

Mesa Workers

This year, 315 Mesa Workers served around the world in diverse capacities aligned with their calling, skill sets, and the needs of our partners. Through hands-on ministry, they built relationships of trust, planted churches, and served communities—living out the gospel in word and deed alongside local leaders.



Mesa Interns

Designed for 18–29-year-olds seeking to deepen their faith and explore cross-cultural kingdom work, Mesa internships offer summer and 1–2-year options. Interns gain valuable ministry experience while being disciplined and equipped for their future calling. **This year, 22 young leaders served in 7 locations around the world, growing in faith and leadership as they joined hands with local churches and ministries.**

Mesa Scholars

Designed for theologians and researchers eager to invest in emerging Christian leaders. Mesa Scholars teach, mentor, and collaborate across cultures—advancing theological education and shaping the future of the global church. **Currently, 42 Mesa Scholars serve in partnered theological communities worldwide, strengthening institutions and equipping leaders for sustainable, locally led ministry.**



A SUNRISE IN OAXACA: Lucy's Journey from Darkness to Hope



In the heart of Oaxaca, Mexico, the red-light district is marked by brokenness. For years, Lucy lived in its shadows, trapped in prostitution and struggling to care for her children. She often visited Amanecer, a Mesa Global partner ministry, seeking prayer and encouragement. Yet lasting change always seemed just out of reach.

Everything changed when Lucy finally reached out for help. The Amanecer team welcomed her with open arms, guiding her and her two children into a safe, fully-furnished home where they could begin anew. Over the course of Amanecer's nine-month program, Lucy discovered the art of jewelry making, explored new career paths, and—most importantly—encountered the love and hope of Jesus that would transform her life.

Day after day, Lucy joined devotionals, asked honest questions, and grew in her faith. What began as a job training program became the foundation for a new life. By graduation, Lucy had decided to pursue her dream of becoming a nurse. Today she works with a local family as a nurse outside Oaxaca, staying connected to the team who first worked with her at Amanecer. While family struggles remain, Lucy now carries a hope and purpose rooted in Christ.

Lucy's story is one among many. Through Amanecer's job training program, 10 women have graduated with new opportunities, healing, and faith. Meanwhile, Amanecer's outreach program in the red-light district meets about 45 women every month with prayer, meals, and friendship. 6 women have already left prostitution since the ministry began.

This work is made possible by a growing team of local leaders and volunteers who disciple women, lead Bible studies, and train others to serve in hard places. Mesa Global's commitment to equipping national leaders ensures that gospel transformation, like Lucy's, will continue to multiply across Oaxaca.

Like the sunrise that breaks through the darkness, Lucy's journey reflects the lasting hope of the gospel and the vision of God's kingdom advancing through the ministry of well-trained local leaders.



Caring for our Mesa Workers

Equipping servant leaders globally begins with equipping our own workers for flourishing and fruitfulness. From pre-field training to ongoing training on the field, we offer spiritual formation resources, retreats, and supportive member care relationships. To keep growing professionally, our workers also have access to leadership development cohorts and Ministry Partner Development coaches to help them serve sustainably.



Spiritual Formation

We provide spaces for our global workers and national partners to be renewed in their relationship with Jesus and refreshed for long-term ministry effectiveness.

IN 2025, WE:

- Hosted 4 in-person spiritual retreats for global workers.
- Conducted spiritual formation training for 15 national leaders.
- Provided spiritual direction for 15 Mesa Workers, both through internal Mesa Global Spiritual Directors and through our partnership with Denver Seminary.
- Led 2 training modules on spiritual mentoring: *Spiritual Mentoring in Prayer* and *Spiritual Mentoring in the Word* for Mesa Workers.
- Convened 2 virtual gatherings to equip Mesa Workers who serve as Spiritual Directors and Mentors.
- Facilitated 3 workshops on spiritual formation at regional conferences.

Focus: Nurturing deep formation in Christ out of which flows effective relationships and healthy ministry.

Member Care

Member Care is dedicated to helping our global workers and their families thrive as they serve cross-culturally. Through consistent, proactive, and responsive support, we provide care for their mental, emotional, and spiritual well-being. This means coming alongside workers during both everyday challenges and critical moments, ensuring they have the resources, encouragement, and guidance they need to remain healthy, resilient, and effective in ministry.

NOTABLE INITIATIVES

- Piloted a support group for parents of adult third culture kids.
- Developed a cross-departmental resource for retiring global workers.
- Partnered with a Christian counseling ministry to make free counseling sessions available to every member of global worker families.
- Offered 4 webinars and 8 in-person sessions to equip our workers with new skills to nurture well-being for themselves and for others.

Number of workers served through Member Care: *All of them!*

Leadership Development

Our Leadership Development Team invests in the holistic formation of Mesa Global's current and emerging leaders, preparing them for long-term effectiveness in ministry and service. This new ministry team launched in 2025, piloting several new resources to support our global workers.

NOTABLE INITIATIVES

- Developed new *Servant Leadership* course in both English and Spanish.
- Launched 5 learning cohorts in Asia and Latin America to complete *Servant Leadership* course in community.
- Developed a new *Finishing Well* curriculum for leaders in their 40s–70s, piloted with Mesa Regional Leaders and theological education consultants.
- Prepared a *Young Leaders* resource to be launched with 20s and 30s cohort in November 2025.

Focus: Equipping servant leaders who embody Christlike leadership and multiply their impact through contextualized, sustainable development processes.

Joy in Collaborating

Your support equips leaders
with resources, wisdom, and
experience — multiplying good
in communities worldwide.



Updates from our Regional Training Hubs

About the Regional Training Hubs

Churches are multiplying rapidly worldwide, resulting in millions of believers without biblically equipped pastors. Current training methods are not able to reach all the new leaders God is raising up. To address this challenge, our Regional Training Hubs bring together seminaries, training organizations, and local churches to collaborate effectively. Hub teams coordinate efforts, foster partnerships, and provide specialized training to trainers, enabling them to expand leadership development initiatives.

Our Goals for Hubs

Mesa Global aims to see flourishing churches in every place, with local leaders who are equipped to lead the church on God's mission in their neighborhoods and nations. Through Hubs, we aim to:

- Make theological education accessible to more leaders who need it
- Promote training materials that are biblical and contextual
- Align training more closely with the ministry of local churches
- Enhance the skill sets of trainers
- Foster greater responsiveness to the challenges and opportunities church leaders face in their communities and nations

Strengthening Measurement Across Regional Training Hubs

Over the past year, Mesa Global has partnered with Radiant Global Insights to enhance our approach to measuring and communicating the outcomes of our Regional Training Hubs. It is important for us to know that our efforts—and your contributions—truly are making a positive impact! We have developed new frameworks and survey instruments to evaluate the effectiveness of our activities with our extensive network of 130+ seminaries and non-formal training partners. This work of measurement and evaluation will ensure that transformative, biblical formation reaches an increasing number of church leaders who desperately need it.

Evaluating Outcomes to Demonstrate Change

We are currently completing an outcomes evaluation of partner training ministries across four regions. This initiative aims to provide the first robust data set on how the training partners our Hubs serve are forming leaders and strengthening local churches across their regions. These insights will empower us to allocate resources more strategically, amplify successful strategies, and share compelling stories of transformation with our global community of partners and supporters. Expect to see this data from us in the coming months!

Impact Stats

Behind every number is a story of transformation. Our Institutes for Excellence provide continuing education and leadership development for leaders in theological education from around the world who are learning, growing, and multiplying impact in their communities.



INSTITUTES FOR EXCELLENCE



SCHOLARSHIPS

\$392,156

to 32 schools

in 25 countries



HOPE IN THE HILLS

Pastor Parbat Rai

In the hills of Nepal—where less than 2% of the population identifies as Christian and the gospel has only begun to take root in recent decades—God is writing a new story of hope. One of the people He is using in this work is **Parbat Rai**.

Years ago, while studying in Kerala, India, Parbat caught the vision for equipping church leaders from his mentor Jaison Thomas, one of Mesa Global's theological educators for South Asia. This vision became reality when Parbat returned to his homeland in Nepal.

Together with his wife, **Srijana**, Parbat began putting his ministry training into practice. In places where there were no churches, new fellowships began to form. Today, their ministry has multiplied into **3 churches and 33 house fellowships**, each led by believers eager to share the gospel with their neighbors. Already, 7 other leaders have been trained, with 3 more preparing for ministry in Kerala before returning to serve as pastors and leaders in Nepal.

Their impact extends far beyond Sunday gatherings. Through Bible classes for children, vocational training for women, and livelihood projects that bring sustainability to remote villages, Parbat and Srijana are serving their communities with both compassion and truth. Their lives embody the gospel—meeting practical needs while pointing people to eternal hope.



What began with the training of one leader has become a multiplying movement. Just as Parbat and Srijana were equipped by Jaison, they now equip others who are carrying the message of Christ even further. From Nepal's cities to remote mountain villages, the light of the gospel is breaking through the darkness.

This story of collaboration begins with you—the donors whose generosity prepares the table for leaders around the world. Mesa leaders join hands with local leaders like Parbat and Srijana, who bring good news into unreached places. Together, churches are planted, leaders are raised, and believers are multiplied—so the table of hope continues to grow.



Joy in Partnership

Your partnership creates joy in working together, uniting local and global leaders to see God's Kingdom flourish.





“

I want to extend my heartfelt gratitude to you, the Mesa Global family, for the generous financial support I received for my PhD studies in Nairobi, Kenya. Because of Mesa Global’s scholarship, I was able to pursue and complete my degree, becoming the first female PhD graduate of the program—a milestone that fills me with deep joy and gratitude. My training at Africa Inland University has enriched my work as Project Manager at Transformational Leadership in Africa (TLAfrica), where I help develop pastoral training materials, coordinate grassroots pastor training, and disciple women in Kenya through micro-loan programs that empower them economically. I’ve co-authored two pastoral training manuals and overseen the production of four others, all while studying and serving in ministry without worrying about school fees—thanks to your continued support. Because of your partnership, I am not only equipped to serve but also filled with joy in sharing that same hope and empowerment with others.

”

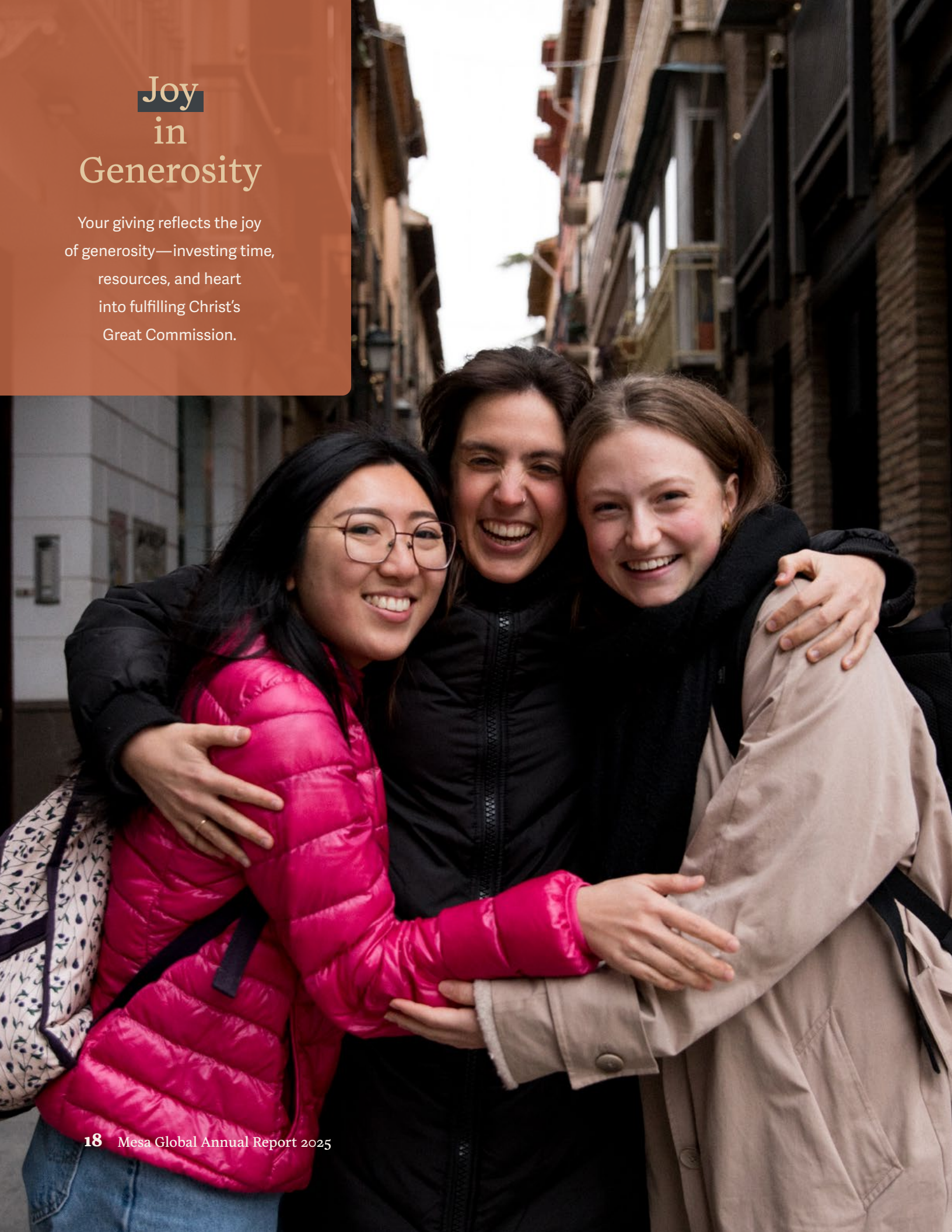
Florah Kidula

PhD Scholarship
Recipient



Joy in Generosity

Your giving reflects the joy
of generosity—investing time,
resources, and heart
into fulfilling Christ's
Great Commission.



Stories of Generosity

The joy of generosity is knowing that every gift creates space at the table where leaders are equipped, communities are strengthened, and the church flourishes across the globe. Rev. Dr. Ashley Goad, Pastor of Missions at The Woodlands Methodist Church in The Woodlands, Texas, remarks on her church's ongoing partnership with Mesa Global — capturing the beauty of giving that becomes abiding friendship and mission together.

NEW DONORS

1,965



CHURCH PARTNER

At The Woodlands Methodist Church, we often speak of “table theology” — that the Gospel invites us not only to believe, but to sit down together. To listen, to learn, to share bread and stories, and to abide with one another in Christ. Mesa Global embodies that invitation. It's not just a theological education ministry. It's a community of presence, rooted in deep, mutual relationship. It's a family.

Our partnership with Mesa has reframed how I think about missions. For years, I never equated theological education with missional engagement. But the more I've witnessed the Mesa model — the more I've met pastors and students being equipped in their own context, culture, and language — the more I've realized this is one of the most powerful forms of mission the local church can offer. Mesa equips leaders who are already embedded in their communities, already embodying Christ's love in places most of us will never go. Our local church gets to be part of that — to be a prayerful presence, a generous base, a sending support.

And that table? It's real. I'll never forget sipping coffee and swapping dog stories with Taras in Ukraine. Sitting with Helga and feeling our hearts knit together in just a few hours. Talking about polycentric mission and the future of the global church with Elie. Learning from Manfred's practical wisdom and steady pastoral

heart. These were not transactional moments. These were table moments — kingdom moments — rooted in friendship, not function.

Mesa has fueled our ministry with imagination, theological depth, and global perspective. But even more than that, Mesa has reminded us what it means to be the church — across continents and cultures, across languages and liturgies. We are learning, growing, and witnessing together. We are abiding together. And that, to me, is the most beautiful kind of mission work there is.



Dr. Ashley Goad

The Woodlands Methodist Church



FAITH IN ACTION: **A Donor's Story**

“

The Bible instructs us that one area of giving is to support ministries and local churches that promote the preaching of the gospel and to build up our local communities as servants of Jesus Christ.

The beauty of Mesa Global, first introduced to me by my dear friend El Ahlwardt during a Kingdom Advisor study group years ago, is that the ministry provides training and theological education to local leaders overseas to grow local churches to serve their flocks, and promote the gospel. It is important to not only present the gospel, but to help believers mature in their faith.

I am inspired by the servant leaders at Mesa Global who are on the frontlines to grow the worldwide church.

It is a privilege and joy to serve Mesa Global. There are three legs on the Mesa Global table. The first are the servant leaders on the ground worldwide who teach, administer, lead, and promote the worldwide church. The second is the staff that maintains the organization and helps the ministry run efficiently. The third is me, a joyful giver who helps provide the funding needed to support operations.

Mesa Global is not privileged to have me as a donor—I am privileged to be able to support this wonderful ministry as a third leg of the table. What a joy to be part of what makes Mesa Global effective around the world.

”

Thomas Cates

Donor

Board of Directors



David Dwight
Board Chair
Richmond, VA



Keyla Pavia
Board Member
Bedminster, NJ



John Bernard
Board Member
Fort Mill, SC



Norie Roeder
Board Member
San Pedro, CA



Matt Boyd
Board Member
Dakar, Senegal



Elizabeth Sendek
Board Member
Medellin, Colombia



Albert Chen
Board Member
Cambridge, MA



Lorna Stern
Board Member
Rockport, MA



Michele Dudley
Board Member
Charlotte, NC



Hank Wood
Board Member
Richmond, VA



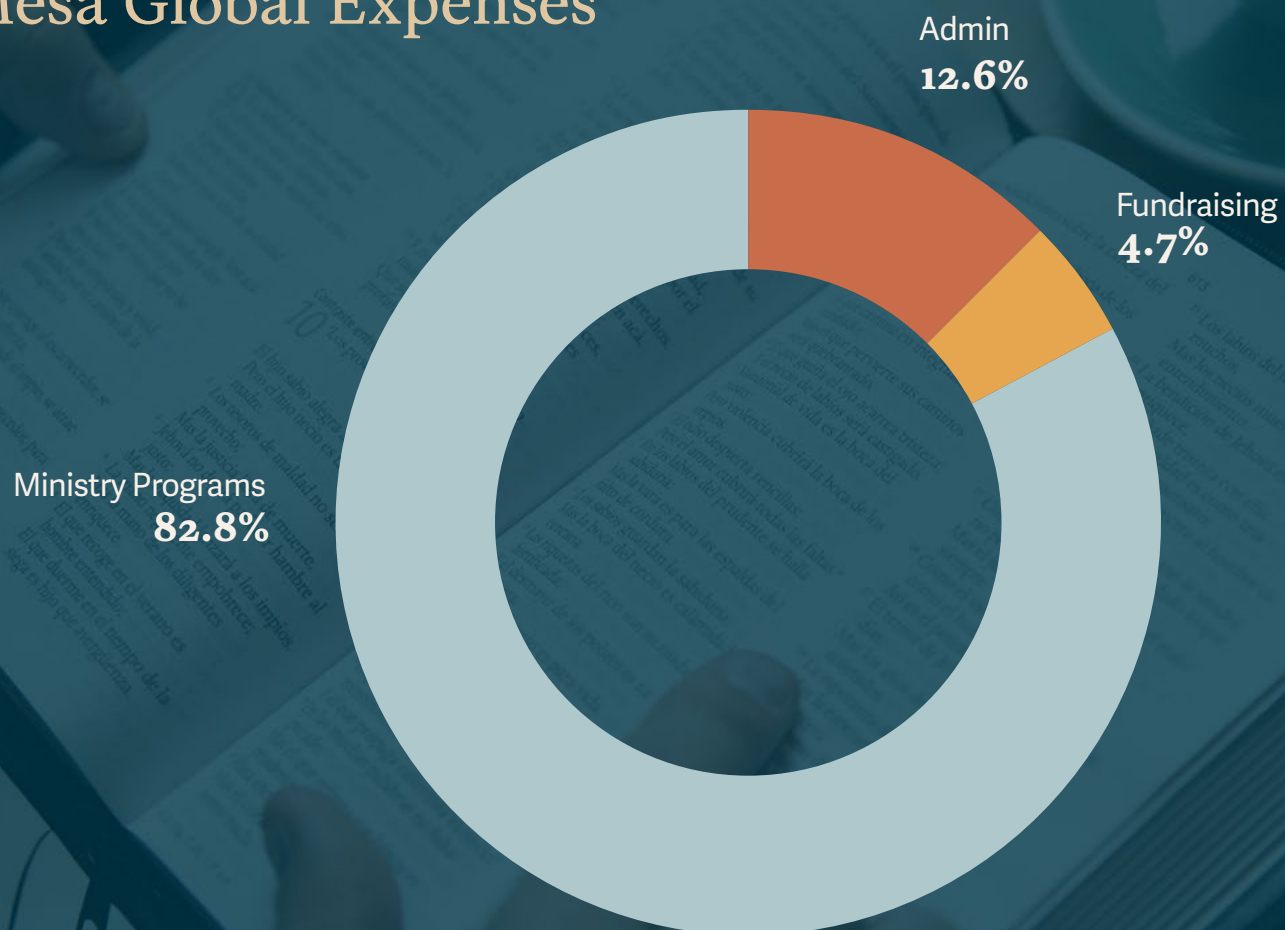
Jill Esau
Board Member
Burien, WA



Tim Whitener
Board Member
Winston-Salem, NC

FINANCIALS

Mesa Global Expenses



Check out additional financials [here](#).

MOVING FORWARD

Looking Ahead with Joy

Together, we are still writing the story of joy at Mesa Global. As we look back at all God has done this year, we also look ahead with expectation to all he will continue to do. As we come around the table with global leaders, partners, and donors, we are inspired by all the parts of the global body of Christ, working together!

We anticipate a season of continued growth and deepening of relationships globally. We are laying the ground work to establish a **sixth Regional Training Hub** with our partners in the Middle East and North Africa region. We have **expanded our Mesa Intern locations** in anticipation of more next-generation workers responding to God's invitation to serve. We are **pouring into young leaders** serving with our ministry teams to equip them for more influence and sustainable ministry impact.

NONE OF THIS IS POSSIBLE WITHOUT YOU. You are a part of the Mesa family, coming together in prayer, in presence, and in partnership. Your generosity enables Mesa Global workers to equip servant leaders and share the love of Christ across the globe. Knowing that Christ is with us always and that you are partners in ministry brings us great joy! Thank you for being a part of what God is doing around the world through Mesa Global.



Your joyful support of the work of Mesa Global is equipping servant leaders and sharing the love of Christ around the world.





Mesa Global

mesaglobal.co



Partner with us!