

Powering the
next generation
of precision
medicines
from a simple
blood draw

 **Precede**
Biosciences



Unlock **gene expression from plasma** and further decode tumor and immune biology

Comprehensive Epigenomic Profiling of enhancers and promoters from **1mL plasma**



~100M gene regulation datapoints sequenced



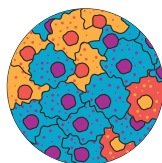
Genome-wide **tumor and immune** transcriptional dynamics



Surface targets



Pathways

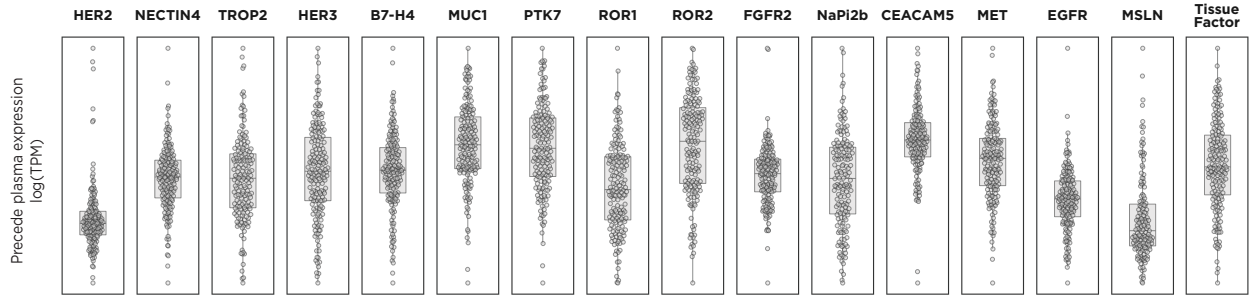


Cell states

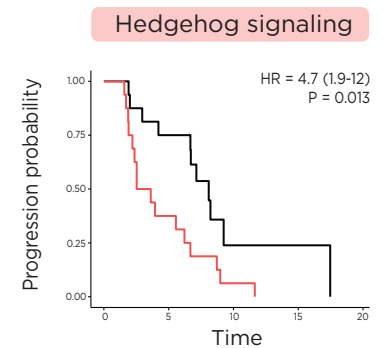
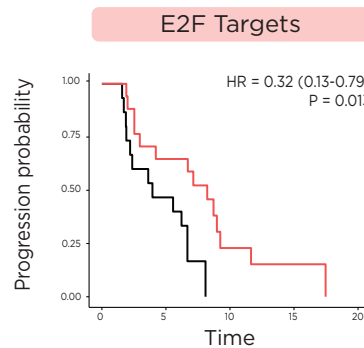
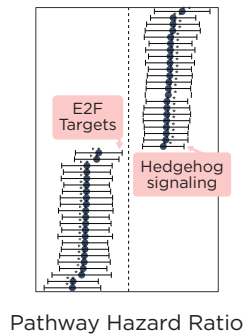
Decode **response** and **resistance** biology to optimize patient selection, combination, and sequencing strategies



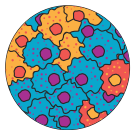
Map **surface target** expression genome-wide



Discover **genes and pathways** associated with response and resistance

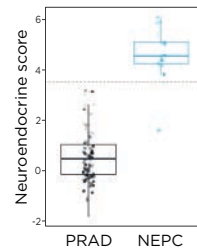


Pathways associated with response to an ADC in advanced breast cancer

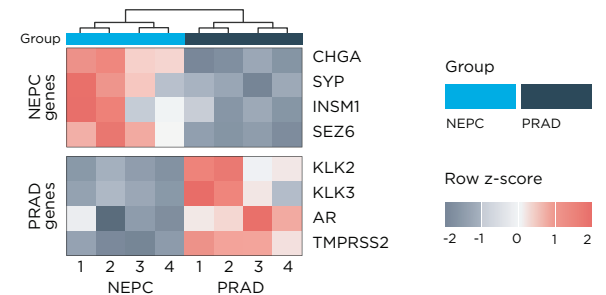


Reveal **cell states** underlying response and resistance

Resolve lineage transformation



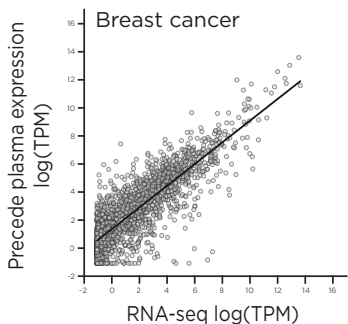
Track lineage-specific gene expression



Expand patient reach and enable precise identification

Plasma-based, comprehensive, quantitative assessments across targets, pathways, and cell states

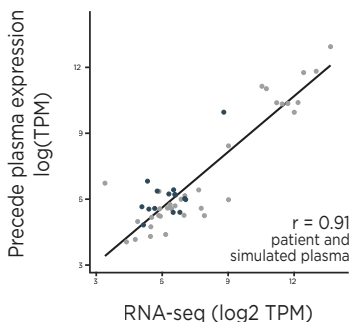
Plasma vs RNA-seq



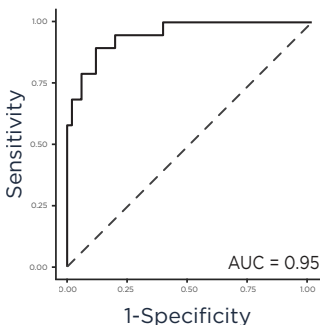
Key targets and pathways

HER2	MSLN
ER	MUC1
TROP2	HER3
NECTIN4	PTK7
B7-H4	ROR1
FGFR2	CEACAM5
GRPR	TF
SSTR2	ER pathway

Plasma vs HER2 RNA-seq



Plasma vs HER2 IHC





VISIT
WWW.PRECEDE.BIO

GET IN TOUCH
PARTNER@PRECEDE.BIO

Precede Bio Insight™ is a research use only (RUO) product, which may be used for research and development purposes, to infer genome-wide transcriptional activity from cell-free DNA in plasma samples.