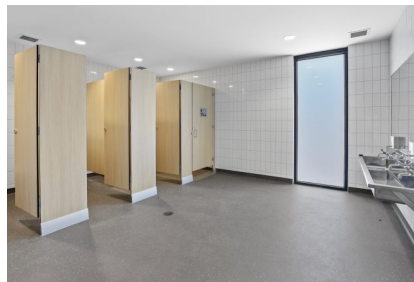
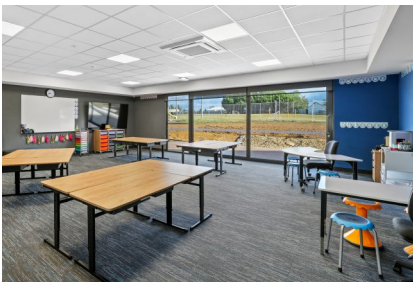


PROJECT PROFILE

ST ANGELA OF THE CROSS STAGE 3



CLIENT

> Catholic Education Australia

LOCATION

> Warragul, Victoria

ARCHITECT / DESIGNER

> Crozier Scott Architects

VALUE

> \$6.26m

SUMMARY

> Built in a live-school environment, the new west wing includes classrooms, offices, amenities, storage, decking and flexible common areas. The rooms were completed with a large joinery package built inhouse. This included lockers, cupboards, desking and partitions. The wing includes flexible learning space that required unusual wall treatments, custom room dividers, modern technology installations, and very hard-wearing surfaces. This project expands our relationship with Catholic Education and this wonderful school community.

CONSTRUCTION HIGHLIGHTS AND TECHNIQUES

- > Imported Swisspearl cladding for fire retardance and weathering
- > Innovative rammed earth wall for street signage
- > Varied landscaping package incl. expansive bike parking
- > Live environment requiring flexible and detailed programming

