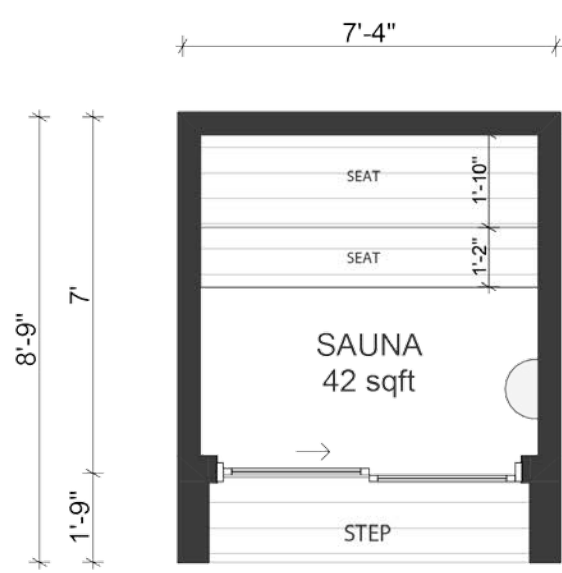


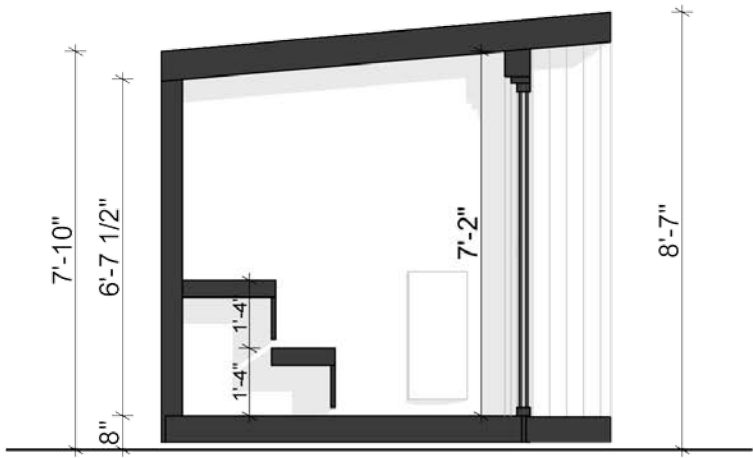
# Bernal Sauna



Floor plan



Section



Bernal is a prefab Sauna model that combines simplicity and clean design, providing a straightforward front-facing layout and can fit up to 8 people.

Designed and fabricated in California, this Sauna can be built in most counties both within and beyond the state. With 42 sqft of space, it offers 2 rows of seating, integrated stone heater and built-in deck.

	Interior	Exterior
Height	7'-2" max	8'-7" max
Length	6'-8"	7'-4"
Depth	6'-4"	8'-9"

Min space for structure : 10'-4" x 11'-9"

Structure

Foundation	Concrete pier foundation
Floor	Pressure treated 2x6 joists with R13 rigid insulation
Walls	2x4 LVL with R13 rigid insulation
Roof	2x6 LVL with R13 rigid insulation
Windows	Aluminum window, double pane, tempered, Low E glass
Door	Aluminum single slider, double pane, tempered, Low E glass

Exterior finishes

Front facade	4" wide cedar facade (color options available)
Sides and back	Black corrugated metal (back and two sides)
Roofing	Peel and stick bitumen roll roofing, dark grey color
Flooring	2x2 ceramic tile floor
Interior walls and ceiling	T&G 1x6 cedar boards

Technical

Interior wiring	Two lines of 20amp wiring
Breaker box	Exterior rated 60amp breaker box
Heater	4,5 kW heater included. Upgrades available
Connection to the house	Extension cord included (can be upgraded to hardline)
Outlets	One exterior outlet included.
Exterior lighting	2 can lights in the soffit, dimmable.
Interior lighting	2 sconce lights, dimmable

\*Subject to change without notice. Contact Wellmade for most current product information. Holds 5-year limited warranty if installed by Wellmade. Designed to be compliant with most local authorities without the need for permit, however some jurisdictions may require permits and compliance is the responsibility of the homeowner. Studio is ready to be operable by means of an extension cord. Electrical box tie-in provided standard in the event that the homeowner chooses to add a dedicated hardline connection.

## Step 1 – Introductory Call and Virtual Site Visit

After an introductory call with our team, we'll do a Virtual Site Visit to verify your site conditions, talk about placement of the Shed onsite and discuss any logistical considerations.

## Step 2 – Customizations and Upgrades

After the Virtual Site Visit, we'll update your quote with any necessary adjustments as well as requested upgrades. Throughout this process, we'll work together to make your Shed exactly the way you want it. Once we get your approval, we'll send a final quote and contract.

## Step 3 – Contract signed

The final quote and contract is fixed and you won't see any change orders from us. You can rest assured that the price of the contract is the price you pay. As soon as the contract is signed, we will get you on the installation schedule.

## Step 4 – Spec Sheet and Fabrication

Prior to fabricating your Shed, we'll send you a final spec sheet for your approval. This will also be where you select cedar stain color, floor color, skylight location, and any other details in preparation for fabrication. We'll also introduce you to your Project Manager that will be your primary point of contact throughout the project.

## Step 5 – Installation

We'll handle everything we agreed to on the final quote and contract. You won't need to worry about subcontractors, project management, or any other hassles that come from traditional construction projects.

## Onsite installation timeline

