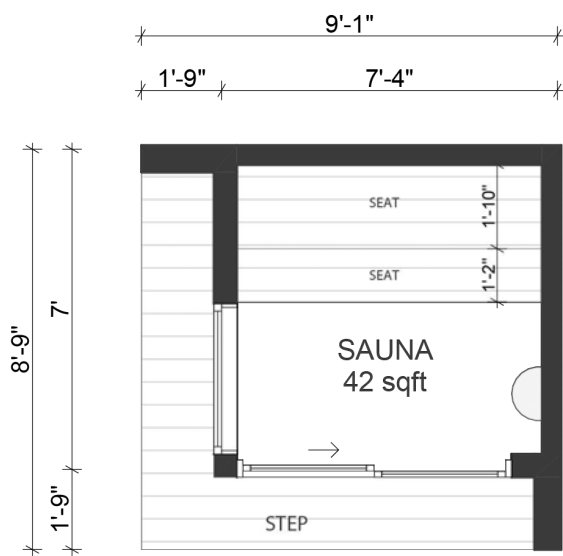




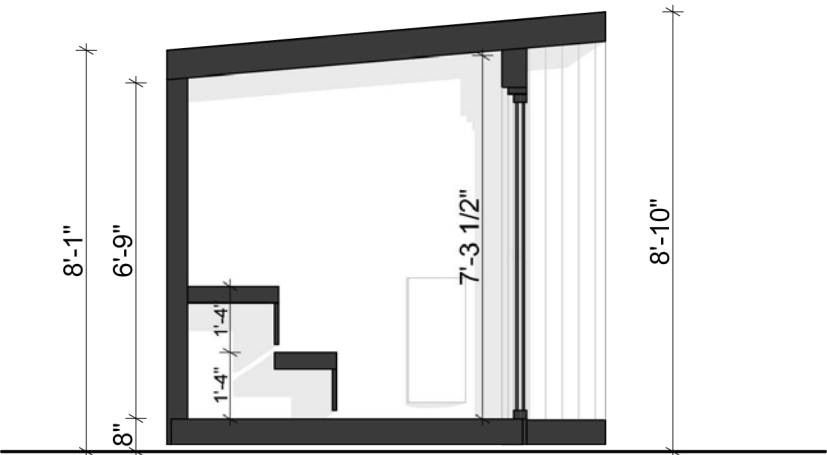
Floor plan



Laurel Sauna combines maximum light, a cedar facade and extended overhangs, and can accommodate up to 8 people.

Designed and fabricated in California, this Sauna can be built in most counties both within and beyond the state. With 42 sqft of space, it offers 2 rows of seating, integrated stone heater and built-in deck.

Section



	Interior	Exterior
Height	7'-4" max	8'-10" max
Length	6'-8"	9'-1"
Depth	6'-4"	8'-9"

Min space for structure: 12'-1" x 11'-9"

Structure

Foundation	Concrete pier foundation
Floor	Pressure treated 2x6 joists with R13 rigid insulation
Walls	2x4 LVL with R13 rigid insulation
Roof	2x6 LVL with R13 rigid insulation
Windows	Aluminum window, double pane, tempered, Low E glass
Door	Aluminum single slider, double pane, tempered, Low E glass

Exterior finishes

Front facade	Red cedar rainscreen system (color options available)
Sides and back	Black corrugated metal (back and one side)
Roofing	Peel and stick bitumen roll roofing, dark grey color
Flooring	2x2 ceramic tile floor
Interior walls and ceiling	T&G 1x6 cedar boards

Technical

Interior wiring	Two lines of 20amp wiring
Breaker box	Exterior rated 60amp breaker box
Heater	6 KW heater included (upgrades available)
Connection to the house	Requires hardline electrical connection
Outlets	One exterior outlet included
Exterior lighting	2 can lights in the soffit, dimmable
Interior lighting	2 sconce lights, dimmable

* Subject to change without notice. Contact Wellmade for most current product information. Holds 5-year limited warranty if installed by Wellmade. Designed to be compliant with most local authorities without the need for permit, however some jurisdictions may require permits and compliance is the responsibility of the homeowner.

Step 1 – Initial call and virtual site visit

After an introductory call with our team, we'll do a Virtual Site Visit to verify your site conditions, talk about placement of the Shed onsite and discuss any logistical considerations.

Step 2 – Feasibility

We'll put our team to work to discover any potential show-stoppers for the project. We'll verify that your ADU project is reasonably feasible.

Step 3 – Pricing

Wellmade has a fixed-price policy. As such, we're going to put in the work to fully understand all of the necessary aspects of the project and their costs before sending you a contract. This pricing exercise costs \$700 and will be deducted from your purchase if you decide to move forward.

Step 4 – Contract Signed and Permit Started

As soon as the contract is signed, we'll start working on a building permit package for you. During the permit work, we'll also work with you to finalize design details like color, materials, and appliance selections.

* Usually, any county is obligated to issue ADU building permit within 8 weeks.

Step 5 – Fabrication and Installation

When we get an approved building permit, we'll start fabricating your ADU. We will make all structural panels and other components in our facility, which will significantly reduce the amount of construction time onsite.

Process timeline:

