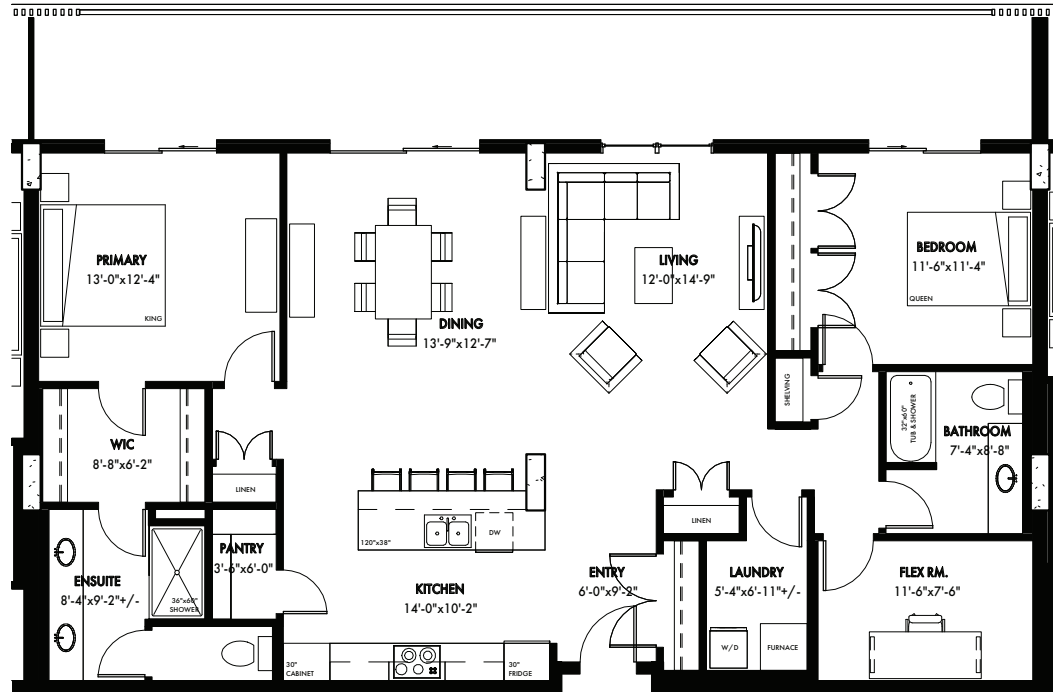


THE KRIZEL | 1,599^{SQ. FT.}

3 BEDROOMS | 2 BATHROOMS

Interior 1,599 SQ. FT.

Terrace 386 SQ. FT.



FEATURES

- Expansive 7' deep full-width private terrace to integrate your indoor and outdoor living experience with access from master bedroom and living room.
- Entertainer's kitchen with seating at breakfast bar plus a dedicated pantry.
- Open concept living and dining area with grand windows for plenty of natural light.
- Primary bedroom with walk-in closet and four-piece ensuite.

SUITE LOCATION



TEXT/CALL US

403-634-3324

EMAIL US

info@102scenicdrive.com

FOLLOW US

@102scenicdrive

*The developer reserves the right to change plans, specifications, pricing, promotions, incentives, features, elevations, floor plans, designs, materials, amenities and dimensions without notice in its sole discretion. All renderings, colour schemes, floor plans, maps and displays are artists' conceptions and are not intended to be an actual depiction of the home or its surroundings. Conditions apply, see sales representative for full details. E&OE.

102 SCENIC DRIVE

102SCENICDRIVE.COM