

OWNER/USER OPPORTUNITY

8890 MILLER RD NE

BAINBRIDGE ISLAND, WA 98110

*Confidential, please do not
disturb tenants*





8890 Miller Road NE

Price: \$2,950,000

40,075 SF (0.92 Acres)

Includes 2 buildings and land

Fully-fenced outdoor storage yard

Bainbridge Island Auto Repair business is also for sale

Confidential, please do not disturb tenants

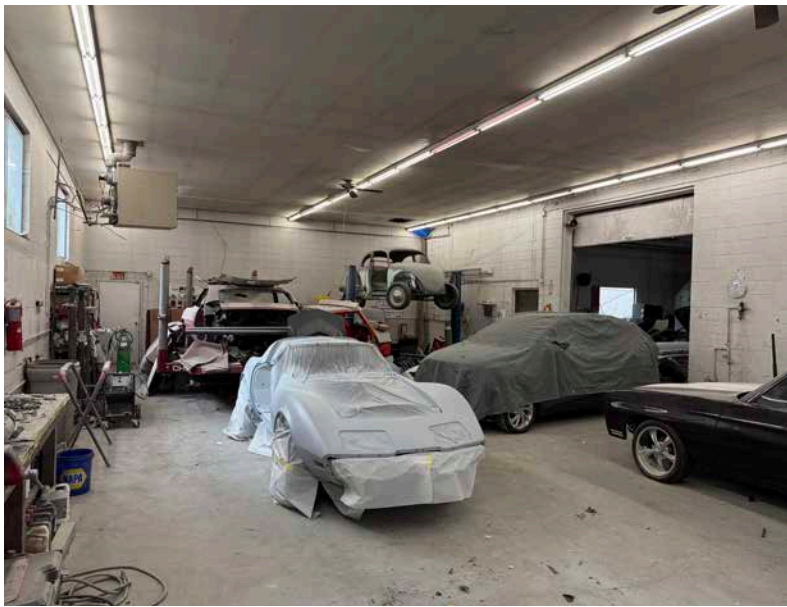
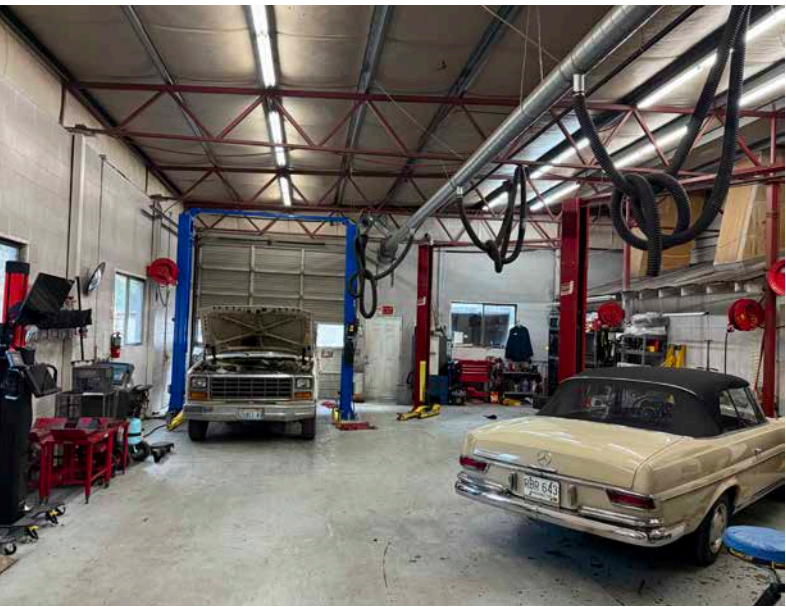
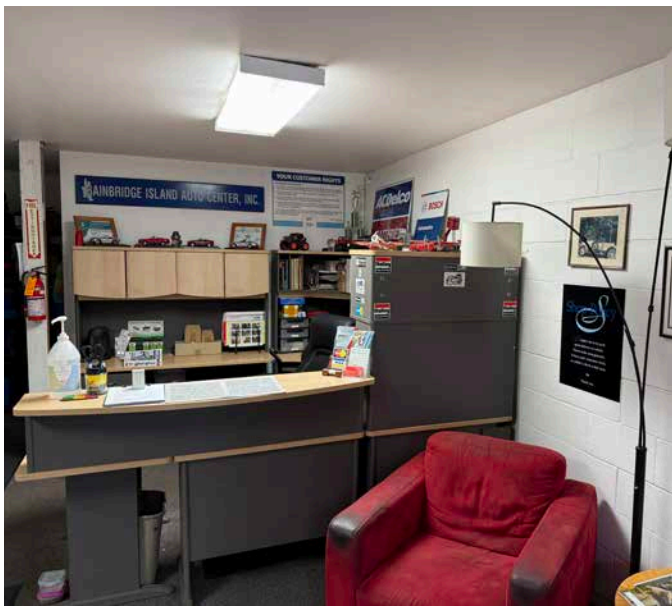
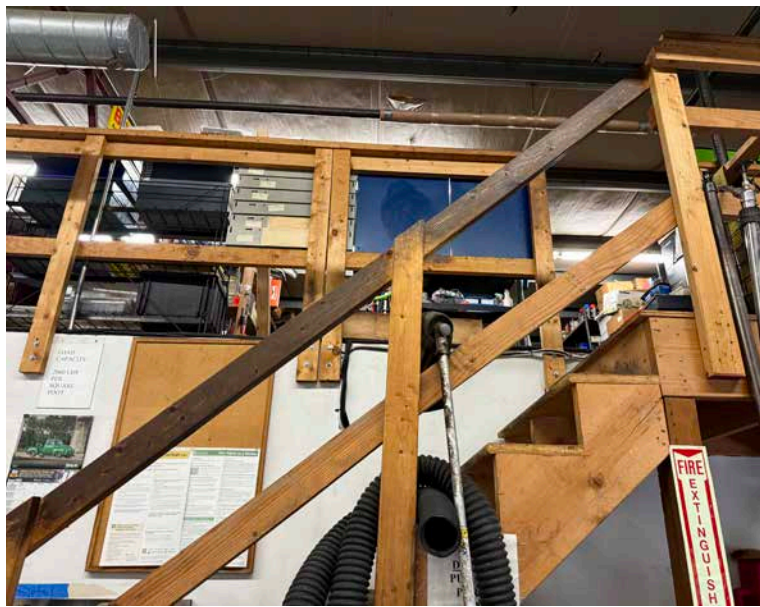
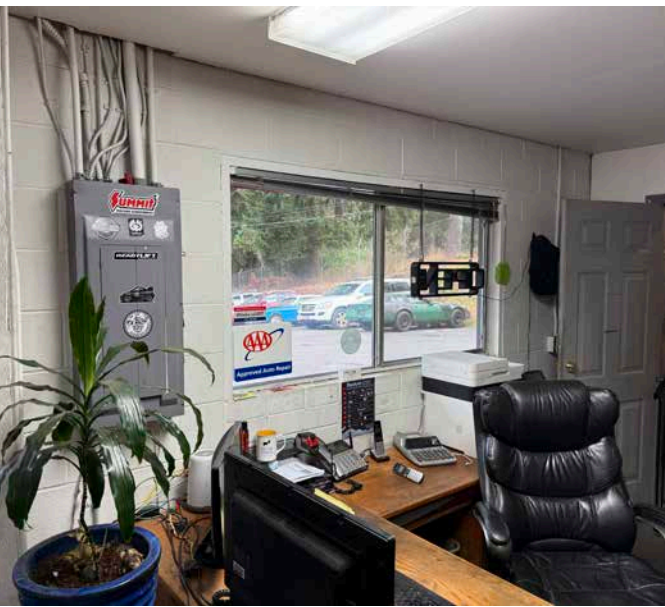
→ [VIEW PROPERTY PHOTOS](#)

9,160 SF
AVAILABLE

0.92 AC
LAND AC







DEMOGRAPHICS

POPULATION

	5 Minutes	10 Minutes	15 Minutes
2010 CENSUS	34,137	104,834	167,716
2020 CENSUS	37,423	115,946	187,595
2025 ESTIMATED	37,139	116,660	187,400
2030 PROJECTED	36,497	114,178	183,749

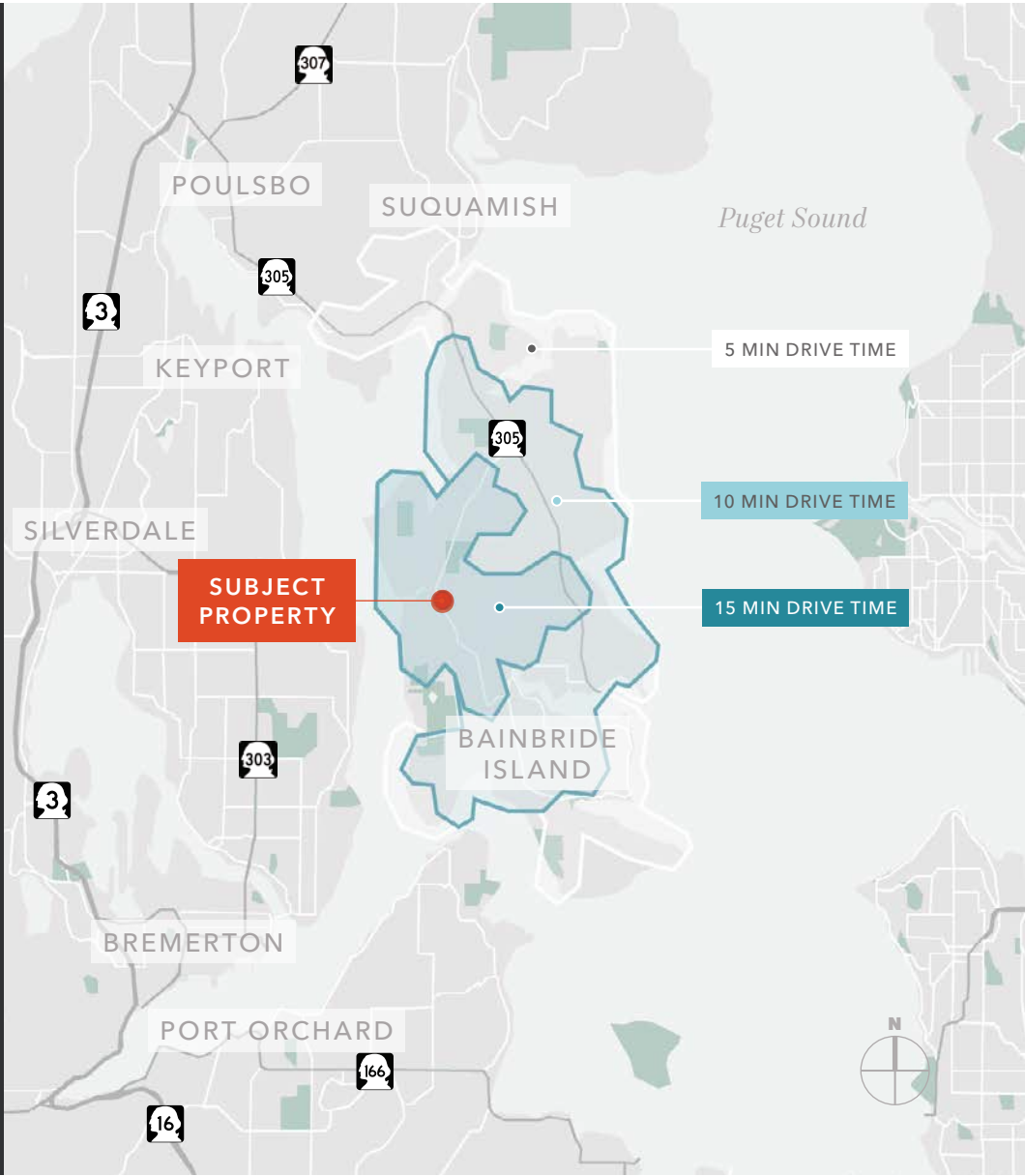
MEDIAN AGE & GENDER

	5 Minutes	10 Minutes	15 Minutes
MEDIAN AGE	39.4	38.0	38.0
% FEMALE	48.7%	48.2%	48.4%
% MALE	51.3%	51.8%	51.6%

HOUSEHOLD INCOME

	5 Minutes	10 Minutes	15 Minutes
2025 MEDIAN	\$103,583	\$101,223	\$103,590
2030 MEDIAN PROJECTED	\$103,632	\$101,421	\$103,776
2025 AVERAGE	\$140,406	\$132,918	\$136,134
2030 AVERAGE PROJECTED	\$138,588	\$131,756	\$134,994

Data Source: ©2025, Sites USA





Exclusively listed by

BLAKE WEBER

206.898.1231

blake.weber@kidder.com

NED WHALEN

206.491.5998

ned.whalen@kidder.com

DAVID GELLNER

206.747.4338

david.gellner@kidder.com

KIDDER.COM

This information supplied herein is from sources we deem reliable. It is provided without any representation, warranty, or guarantee, expressed or implied as to its accuracy. Prospective Buyer or Tenant should conduct an independent investigation and verification of all matters deemed to be material, including, but not limited to, statements of income and expenses. Consult your attorney, accountant, or other professional advisor. All Kidder Mathews designs are the sole property of Kidder Mathews. Branded materials and layouts are not authorized for use by any other firm or person.

