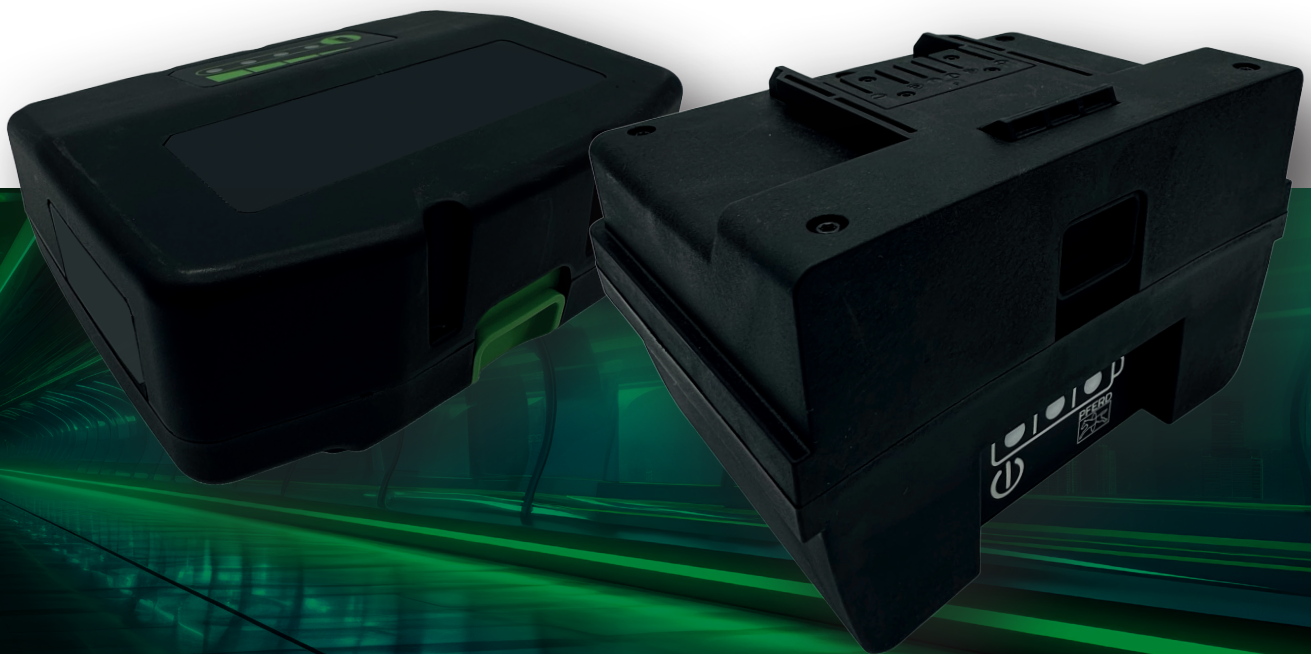


AP
AKKU POWER

AP 25.2 V

25.2 V battery system
The high-performance standard class for
demanding applications.

DATASHEET



COMPACT. EFFICIENT. FULLY INTEGRABLE.

A powerful standard platform. Compact design.
Reliable performance.

AP AKKU POWER

MULTIPLE CONFIGURATIONS. VARIOUS DEVICES.

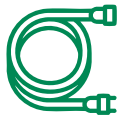
The AKKU POWER 25.2 V system combines compact design, efficiency, reliability and safety in a powerful complete solution for demanding OEM applications. It is the ideal standard class for systems that require consistent performance with minimal installation space – for example in robotics and automation, measurement and medical technology, and mobile industrial devices. All components are optimally matched and can be integrated easily, quickly and economically.

THE MOST IMPORTANT ADVANTAGES AT A GLANCE



Modular complete system:

Battery, charger, tool interface, motor controller and mains connector – perfectly matched



Continuous energy supply

via matching mains connector



Available worldwide



Battery pack with LED state of charge (SoC) indicator



SMBus interface available depending on variant



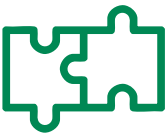
Fast and efficient charging



Easy battery replacement via secure contact holder



SoC via 4 LEDs in 25% steps (LED indication)



Ready-to-integrate platform – reduces development costs



Global approval



Fast time to market



Integrated BMS

for maximum safety and cell protection

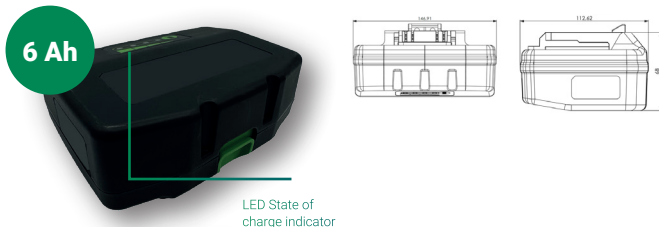
Maximum safety and cell protection against

- Short-circuit protection
- Overcharge protection
- Deep discharge protection
- Cell monitoring
- Temperature protection

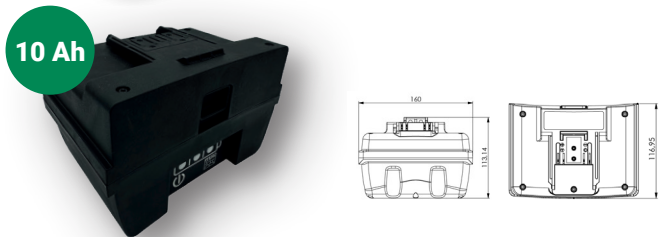
AP AKKU POWER

DATASHEET 25.2 V BATTERY SYSTEM

25.2 V Battery Packs – Flat & High Capacity Design

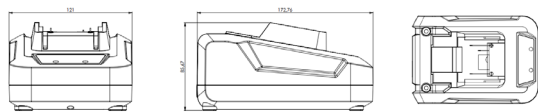


LED State of charge indicator



Technical Data	Specifications	Specifications
Nominal Rated Voltage	25.2 V	25.2 V
Nominal (rated) capacity	6 Ah	10 Ah
Discharge Current	30 A	40 A
Max. continuous discharge current	60 A > 0,2 s	60 A > 0.2 s
Max. charge current	5 A	10 A
Operating Temperature	-20°C to +65°C	-20°C to +65°C
Dimensions (LxWxH)	112 x 146,9 x 68 mm	117 x 160 x 113 mm
Version of Capacity	5 Ah / 6 Ah / 7 Ah	10 Ah
Weight	~1067 g	~2000 g
Compliance information	IEC62133 / UN38.3 / UL62133 / CE / RoHS / REACH	

Charger L3645

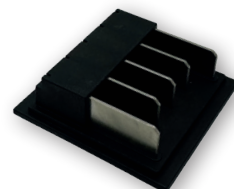
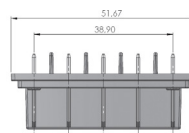


Technical Data	Specification
Input Voltage	100 V–240 V
Output Voltage	25 V
Power	150 W
Charging Current	4.0 A
Dimensions (H x W x D)	120 x 140 x 200 mm
Weight	560 g
Interface	flexible
Certifications (EU)	EN 60335-1, EN 60335-2-29, EN 55014, EN 61000-3-2/3, EN 50581
Certifications (US)	UL 1012:2010 8th Ed., CSA C22.2 107.1:2001

- The charger is suitable for 25.2 V and 48 V Li-Ion battery packs
- Multi-color LED's indicate the SOC of the battery

Contact Holder

1. 5-pin contact system for a secure connection
2. Designed for OEM integration
3. Supports efficient power delivery in 25.2 V drive systems



Mains connector

- Patented Solution for Power supply in the battery housing to connect to the power source
- No downtime when all batteries are discharged
- Plug & Play.
- Overload protection, Short circuit protection & Overheating protection





About Akku Power

AKKU POWER, based in Schorndorf, Germany, is a leading international developer and manufacturer of innovative, high-performance battery systems that provide you with a reliable, mains-independent power supply – whether for trade, everyday use or on the go. Our solutions combine state-of-the-art technology with high-quality components and maximum efficiency.

We offer a wide range of ready-to-use battery products for tradespeople, small businesses, start-ups and end customers: from power and garden tools to e-mobility, home storage and lifestyle applications. With AKKU POWER, you are always flexible, independent and well equipped for the mobile energy supply of tomorrow.

AKKU POWER GmbH

Gottlob-Bauknecht-Str. 5 | D-73614 Schorndorf
Phone +49 (0)7181-97735-0 | Fax +49 (0)7181-97735-29

www.aku-power.com | info@aku-power.com