

METER-RITE®

SOURCE ISOLATION SWITCH

PRODUCT OVERVIEW



The Meter-Rite Source Isolation Switch is RONK's next step into renewable energy solutions, designed to provide a reliable and compliant method of isolating a power source from a Battery Energy Storage System (BESS). With support for both single phase and three phase configurations and a wide current range of 100A to 1200A, this switch offers the flexibility needed for residential, commercial, and utility-scale applications.

Built with safety at the forefront, the Source Isolation Switch integrates a UL489 Molded Case Circuit Breaker (MCCB) and carries UL508A certification, ensuring dependable protection and simplified approval across multiple installations. Its NEMA 4/12 outdoor-rated enclosure provides rugged durability in demanding environments, while full G99/1 and G98/1 compliance supports seamless integration with international renewable energy standards.

Engineered for Battery Energy Storage Systems, renewable energy projects, microgrids, and utility interconnections, the Meter-Rite Source Isolation Switch provides the positive isolation required to ensure safe maintenance, reliable grid compatibility, and long-term system performance. Backed by more than 75 years of proven RONK reliability, it represents a powerful and trusted solution for today's evolving energy landscape.

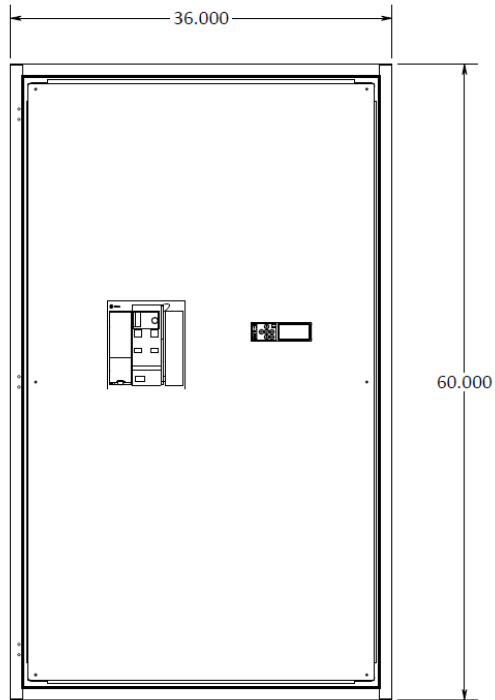
FEATURES AND BENEFITS

- **Wide Current Range (100A–1200A):** Flexible enough to serve residential, commercial, and industrial energy storage applications.
- **Single Phase & Three Phase Support:** Ensures compatibility across a broad range of installation environments.
- **UL508A & UL489 MCCB Listed:** Built to meet stringent U.S. safety standards.
- **G99/1 & G98/1 Compliance:** Grid-ready for international renewable energy installations.
- **NEMA 4/12 Outdoor Rated:** Designed for durability and weather resistance in outdoor applications.
- **Positive Isolation for BESS Applications:** Provides safe, reliable separation between the grid and battery energy storage systems.
- **Compliance:** Meets NEC & IEC isolation requirements.

Meter-Rite Source Isolation Switch						
Part Number	Phase	Amperage Rating	Voltage	Short Circuit Rating	Mounting	Enclosure
MR-SIS-1Ø	1 Phase	100-1200A	240V/480V	Per UL489 MCCB ratings	Wall Mounted	NEMA 4/12 (Type 4x Available)
MR-SIS-3Ø	3 Phase	100-1200A	240V/480V	Per UL489 MCCB ratings	Wall Mounted	NEMA 4/12 (Type 4x Available)

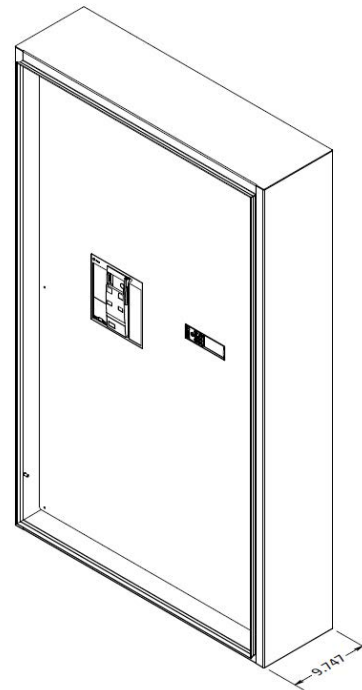
DIMENSIONS (FRONT VIEW)

(SHOWN WITHOUT DOOR)

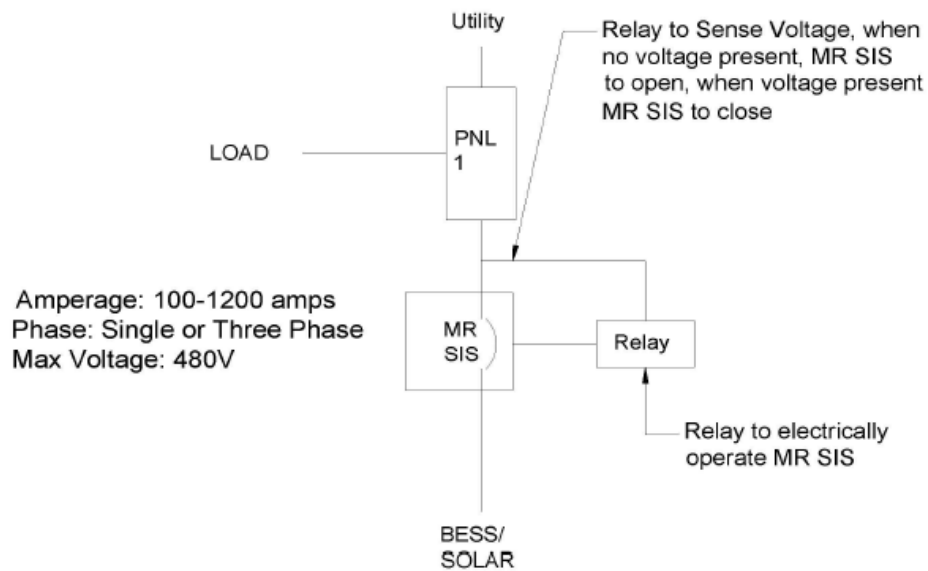


DIMENSIONS (SIDE VIEW)

(SHOWN WITHOUT DOOR)



SYSTEM DIAGRAM



RONK

Revised 2025.12

Sales: 1-800-221-7665 • Service & Support: 1-217-563-8333

PO Box 160, 106 E State Street, Nokomis, IL 62075-0160 • sales@ronkelectrical.com • www.ronkelectrical.com