

# Hybrid Wind&Solar project Planik

## Project information

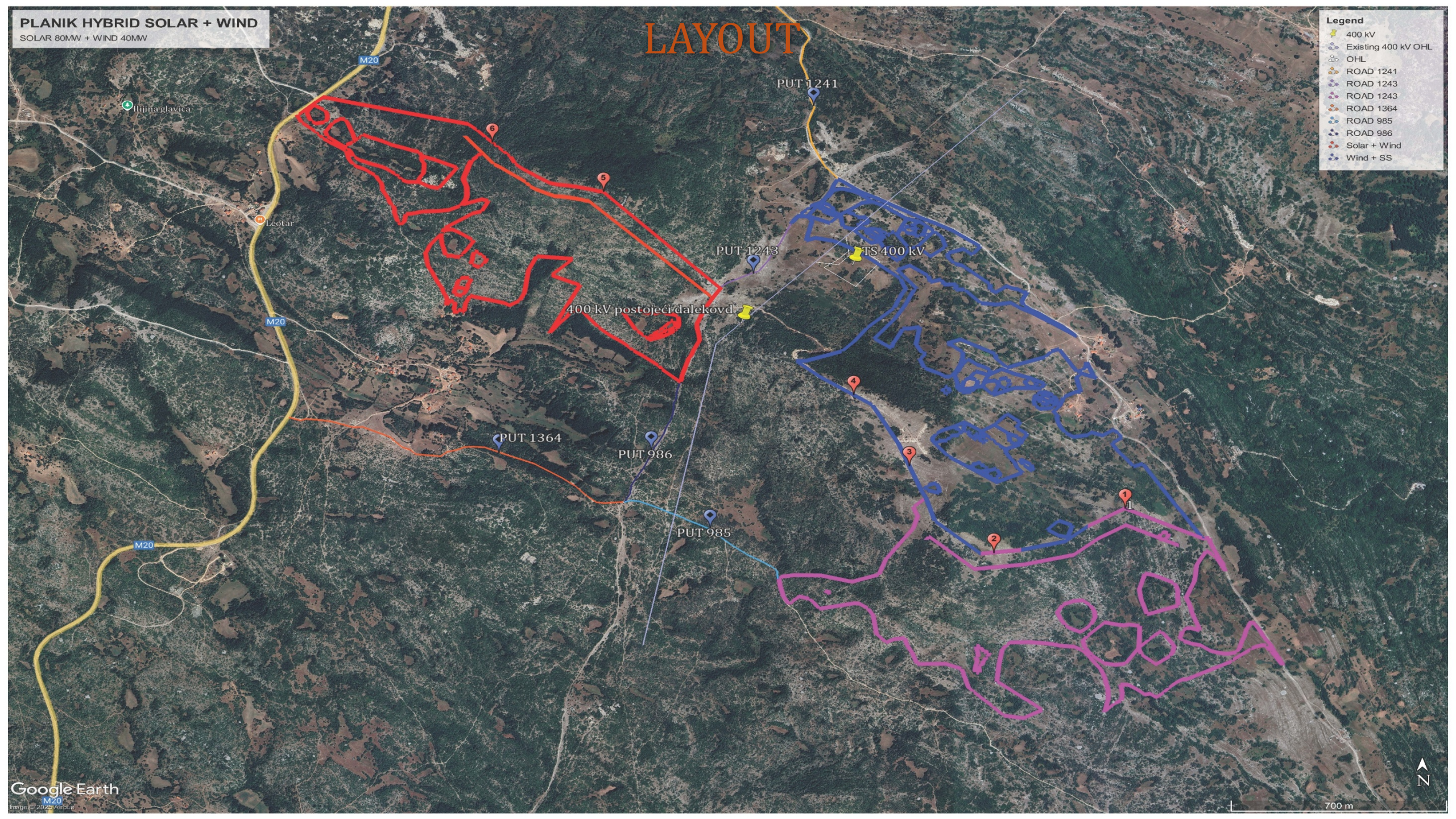
- Location Bileća – Republic of Srpska – BiH
- Wind power: 39,6 MW (**CONCESSION AGREEMENT**)
- Wind power: 36,0 MW (6 X 6,0 MW –**GOLD WIND**)
- Solar power: 94 MWp DC, 80 MW AC
- Combine power: 120 MW
- Shared substation: 35/400 kV
- Substation power: 150 MW



# LAYOUT

**Legend**

- 400 kV
- Existing 400 kV OHL
- OHL
- ROAD 1241
- ROAD 1243
- ROAD 1243
- ROAD 1364
- ROAD 985
- ROAD 986
- Solar + Wind
- Wind + SS







**Wind annual production: 102 GWh**  
**Solar annual production: 123 GWh**

## **Hybrid Project Wind&Solar Planik** **Bilića BiH – KO Korita, KO Meka Gruda & KO Preraca**

### **Project information**

- Wind power: 39,60 MW (36,0 MW Gold Wind)
- Solar power: 80 MW AC
- Combine power: 120 MW
- Shared substation: 35/400 kV
- Substation power: 3x50 MVA
- Land rights: long term lease with government
- Project status: The construction permit for the SPP has been obtained. The main design for the WF is currently being developed.