

MISHAKAV RESIDENCE

Nea Ekali - Limassol



www.imkacy.com

MISHAKAV RESIDENCE

INTRODUCTION

The Mishakav Residence is an ideally located project in Nea Ekali, Limassol, with main amenities less than a kilometre away. Comprised of six, carefully designed two bedroom apartments, each being unique and guaranteeing a comfortable living experience.



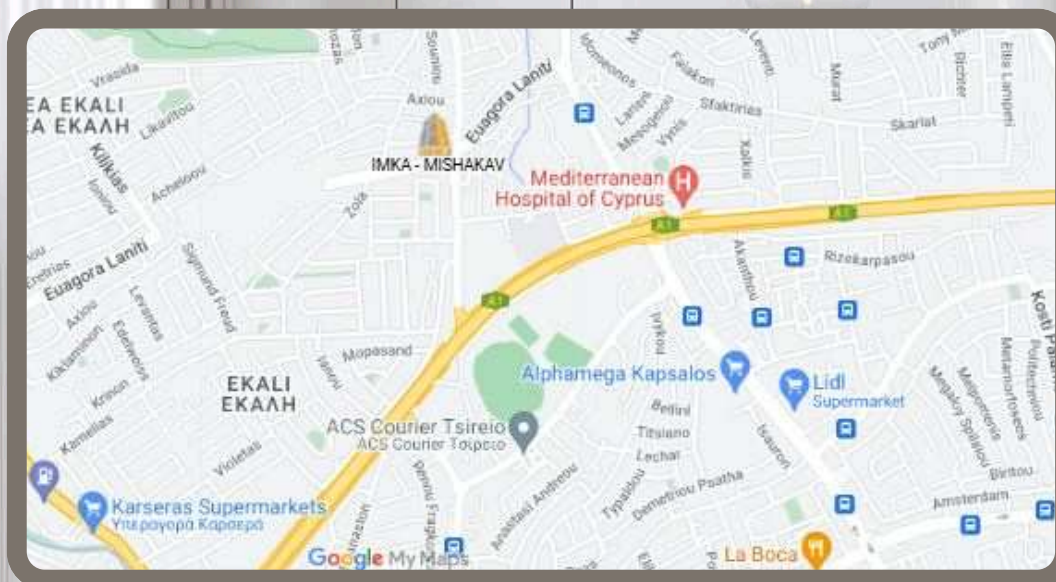
MISHAKAV RESIDENCE

This modern structure offers the comfort of underfloor heating, provisions for air conditioning and photovoltaic panels. Each floor has a different type of apartment to choose from - first floor apartments with additional, large verandas, spacious second floor apartments and third floor apartments with roof gardens.



MISHAKAV RESIDENCE

DISTANCE TO AMENITIES



GROCERY



5 minutes

AIRPORT



50 minutes

SCHOOL



10 minutes

BEACH



15 minutes

HOSPITAL

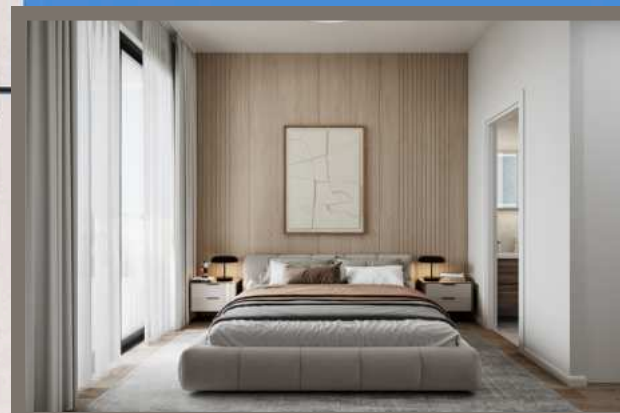


5 minutes

MISHAKAV RESIDENCE

SPECIFICATIONS

- Heated floors for optimal comfort
- Provisions for air conditioning
- Photovoltaic system integration for sustainable energy generation
- Large European porcelain tiles
- Tailor-made kitchens and wardrobes
- Storage areas and built-in furniture
- Solar and pressurised hot water system
- Double glazing for thermal efficiency
- Provisions for charging electric cars
- Thermal insulation
- Glass balcony railings
- Door camera / Intercom system
- Two access roads to building

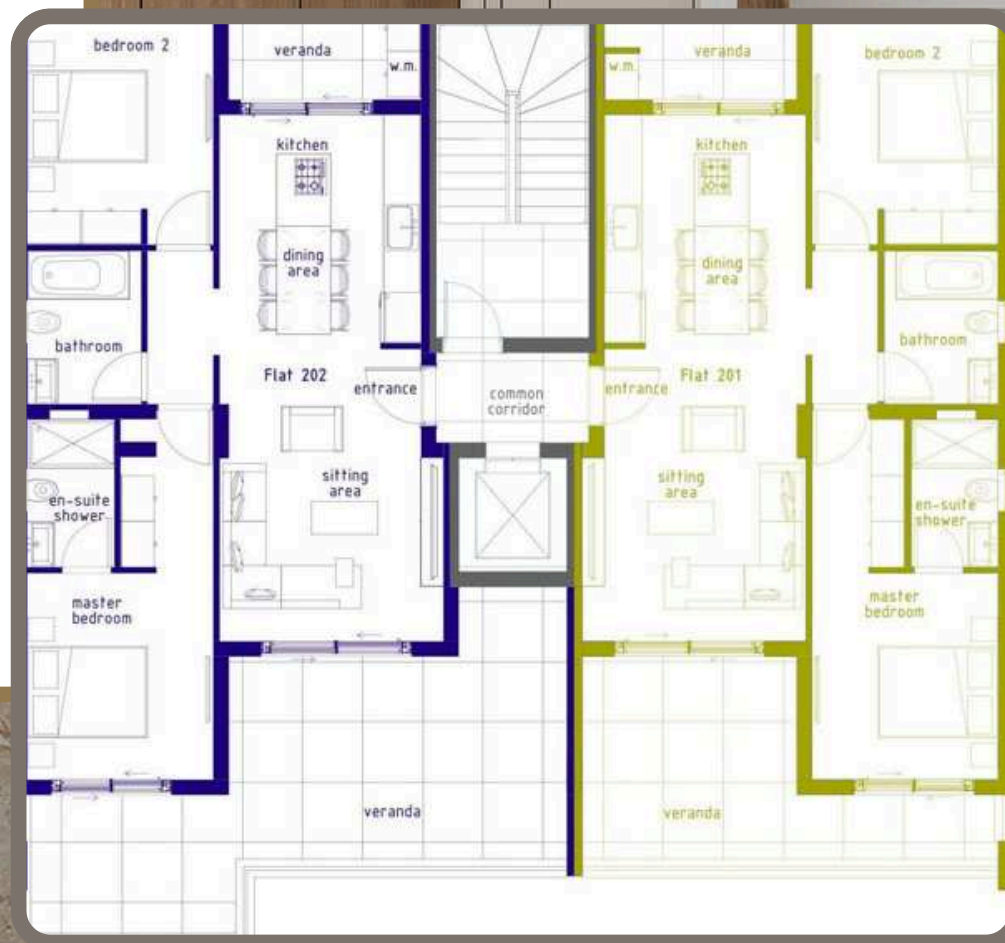


PROJECT PLANS

MISHAKAV RESIDENCE



FIRST FLOOR

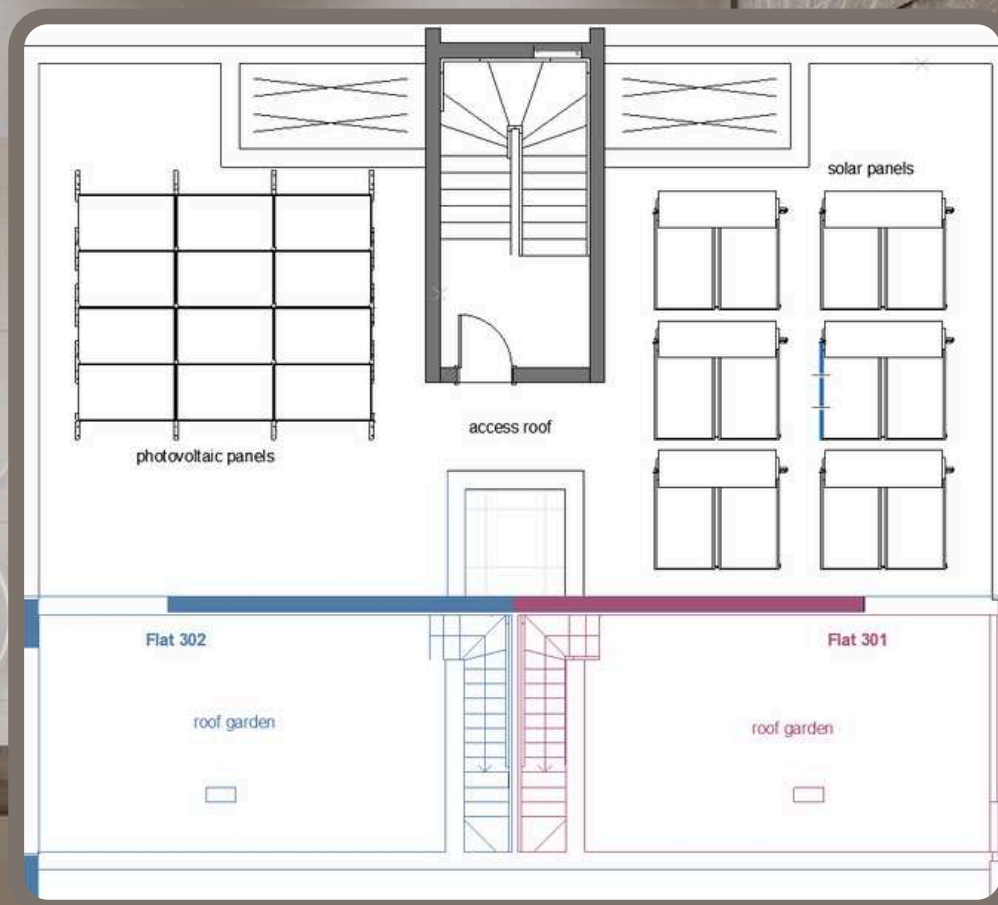


SECOND FLOOR

MISHAKAV RESIDENCE



THIRD FLOOR



ROOF TOP

MISHAKAV RESIDENCE

No.	Floor	Bedrooms	Area	Veranda	Area	Total Area
101	1	2	75	21	Veranda 27	123
102	1	2	75	21	Veranda 18	114
201	2	2	75	21		96
202	2	2	75	21		96
301	3	2	75	15	Roof Garden 27	117
302	3	2	75	15	Roof Garden 27	117



SCAN FOR
AVAILABILITY
STATUS:

CONTACT US:



+357 99797222



www.imkacy.com



info@imkacy.com



Scan to Explore
More Projects by
IMKA