

A photograph of a traditional Swiss wooden chalet, likely a holiday home, nestled among tall evergreen trees. The chalet features a steep, dark wooden roof and a balcony with ornate, carved wooden railings. The text "CHALET FEUILLU" is overlaid in large, white, sans-serif capital letters across the center of the image. Below it, the text "VERBIER, SWITZERLAND" is written in smaller, white, sans-serif capital letters. The scene is set against a clear blue sky, with the branches of the trees framing the chalet.

# CHALET FEUILLU

VERBIER, SWITZERLAND



## CHALET OVERVIEW

6 GUESTS

3 BEDROOMS

3 ENSUITES

FIREPLACE

ENTERTAINMENT ZONE

OUTDOOR HOT TUB

BALCONIES

PRIVATE SKI & BOOTROOM

1 INDOOR PARKING SPACE

1 OUTDOOT PARKING SPACE

650 METRES TO SKI LIFT

240 METRES WALK TO CENTRE



BUILT IN 2022, CHALET FEUILLU IS A MODERN ALPINE RETREAT WITH PANORAMIC MOUNTAIN VIEWS ACROSS THREE STYLISH FLOORS.

THE FIRST FLOOR IS AN OPEN-PLAN LIVING AREA FEATURING A FIREPLACE, A HOT TUB ON THE BALCONY, AND A DINING TABLE THAT CONVERTS INTO A POOL TABLE. FLOOR-TO-CEILING WINDOWS CAPTURE BREATHTAKING VISTAS, WHILE PLUSH SEATING OFFERS A COSY SPOT FOR EVENINGS IN.

ACCOMMODATING SIX GUESTS, THE CHALET HAS THREE SPACIOUS DOUBLE BEDROOMS. THE PRIMARY SUITE INCLUDES A PRIVATE BALCONY AND EN-SUITE. TWO ADDITIONAL BEDROOMS SHARE A BALCONY AND EACH HAS AN EN-SUITE, ENSURING PRIVACY AND COMFORT.

ON THE GROUND FLOOR, A GARAGE AND SKI ROOM, ALONG WITH A FOOSBALL TABLE, ADD CONVENIENCE AND APRÈS-SKI FUN TO THIS THOUGHTFULLY DESIGNED CHALET

**LIVINGROOM**













**DINING ROOM**











**KITCHEN**







**PRIMARY  
GUEST ROOM**











**PRIMARY ENSUITE**







**GUEST ROOM 02**











## **ENSUITE 02**







**GUEST ROOM 03**











## **ENSUITE 03**

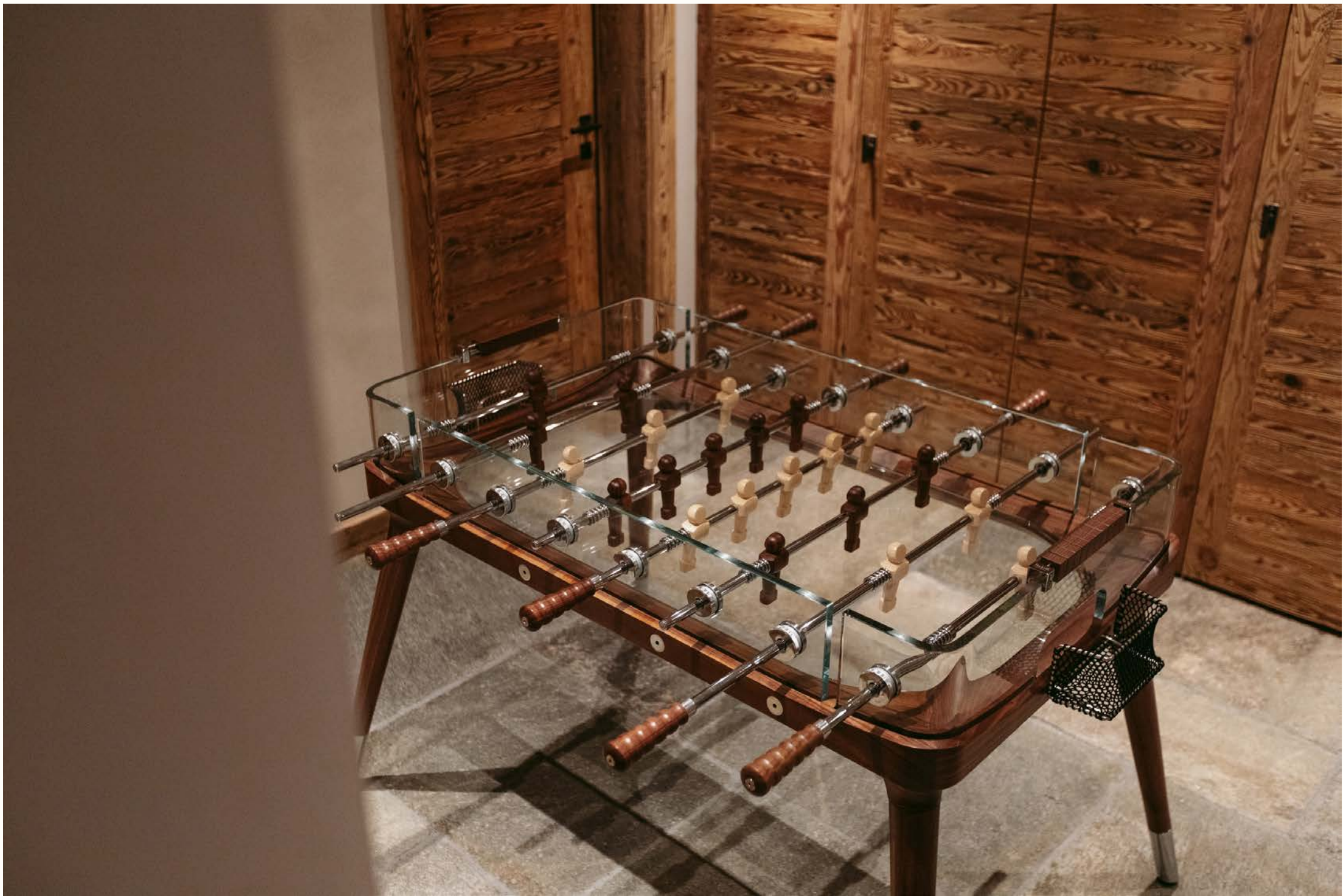






**ENTERTAINMENT**











## **OUTDOOR LIVING**















**BOOTROOM  
& PARKING**





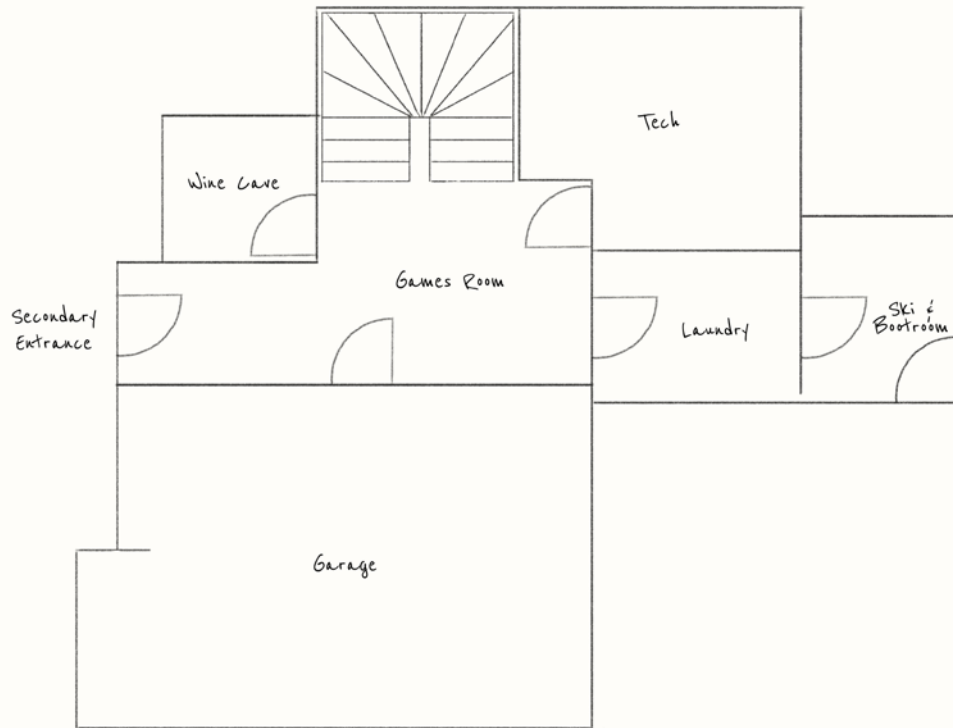






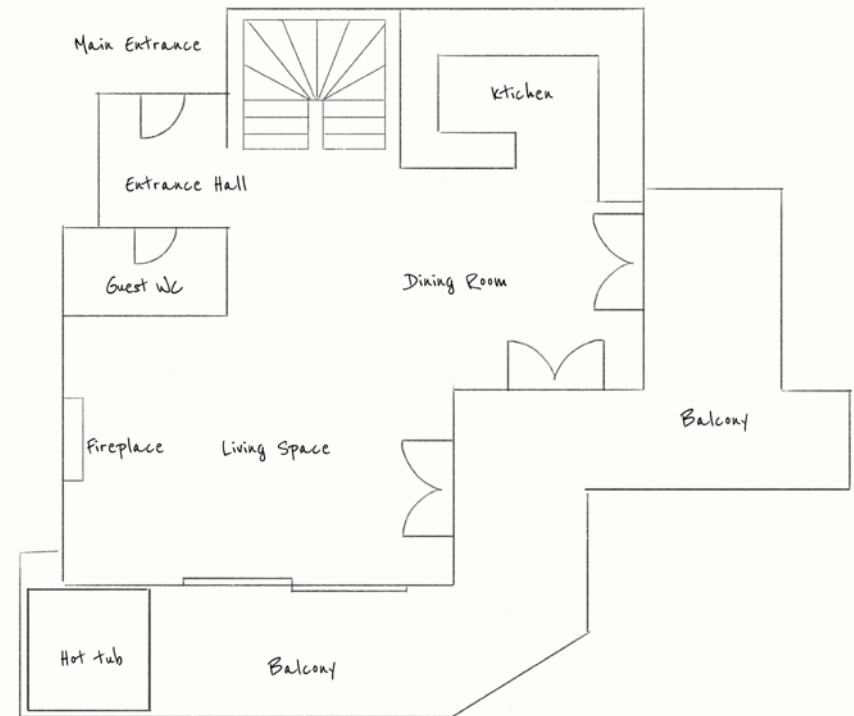


# CHALET FLOOR PLAN



## GROUND FLOOR

SKI & BOOTROOM  
GAMES / FOOSBALL  
LAUNDRY  
INDOOR PARKING SPACES



## FIRST FLOOR

OPEN PLAN LIVING  
KITCHEN AND DINING  
WC  
OUTDOOR HOT TUB  
TERRACE



# GUEST ROOM CONFIGURATIONS

## MASTER GUEST ROOM

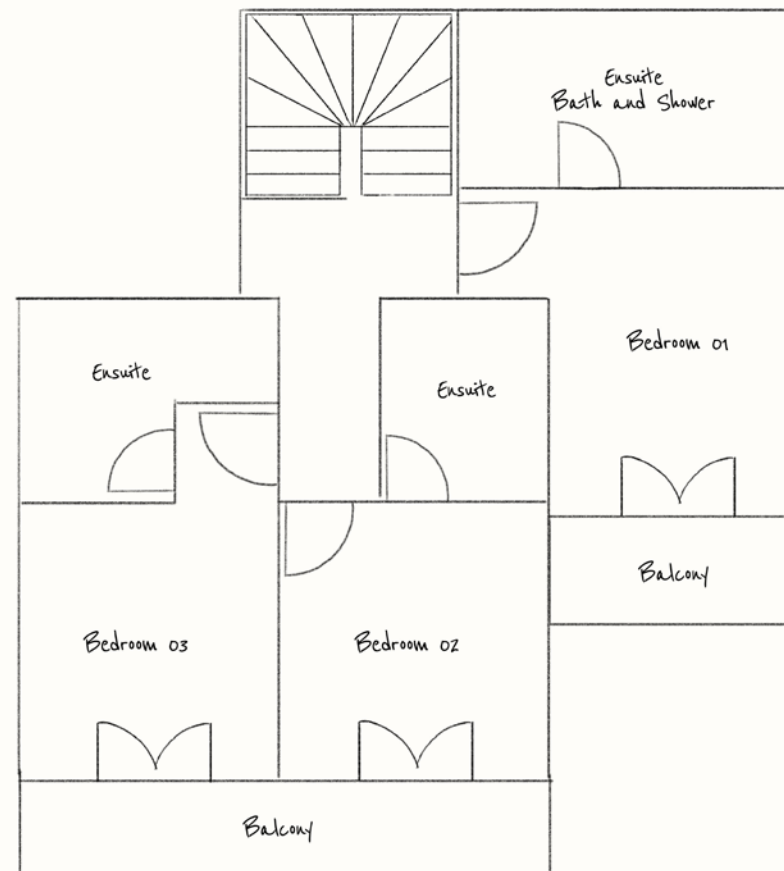
DOUBLE BED  
ENSUITE  
SHOWER  
BALCONY

## GUEST ROOM 02

DOUBLE BED  
ENSUITE  
BATH & SHOWER  
BALCONY

## GUEST ROOM 03

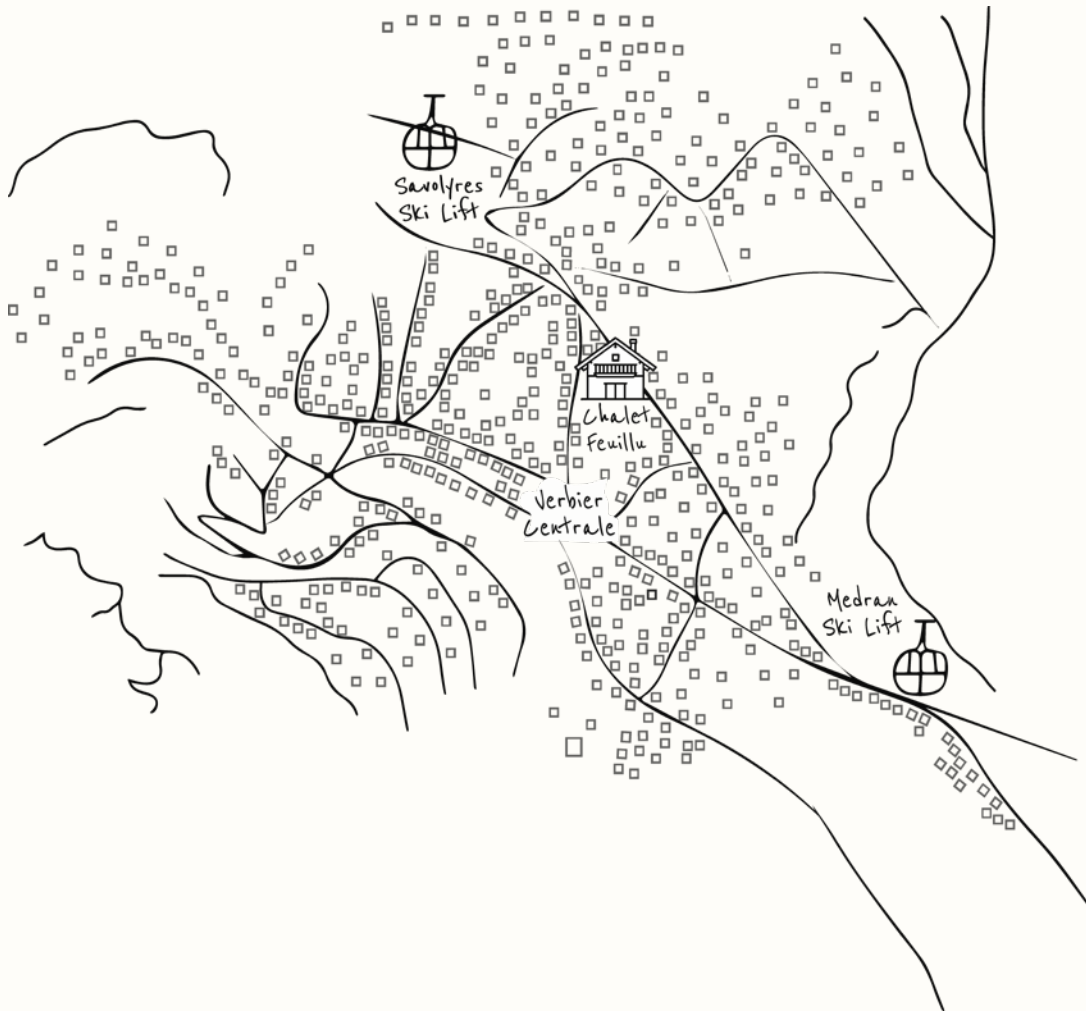
DOUBLE / TWIN BEDS  
ENSUITE  
SHOWER  
BALCONY



## SECOND FLOOR

3 BEDROOMS  
3 BATHROOMS  
2 BALCONIES

# CHALET LOCATION



Rte des Creux 42,  
1936 Verbier, Switzerland

GOOGLE COORDINATES

46.0982, 7.23033

PLACE CENTRALE 3 MINUTE WALK

BEGINNER SLOPES 4 MINUTES BY CHAUFFEUR

SKI LIFT 3 MINUTES BY CHAUFFEUR

LE ROUGE PISTE / APRES SKI - 5 MINUTE WALK