

A photograph of a two-story wooden chalet with a steep, snow-covered roof and multiple balconies with wooden railings. The chalet is nestled in a dense forest of snow-laden evergreen trees. The scene is captured in a cool, blue-toned light, suggesting a winter day. The text 'CHALET SOROJASA' is overlaid in large, white, sans-serif capital letters across the middle of the image.

CHALET SOROJASA

VERBIER, SWITZERLAND

CHALET OVERVIEW

10 GUESTS

5 BEDROOMS

5 BATHROOMS

2 SEPERATE WC

FIREPLACE

INDOOR POOL

HAMMAM

MASSAGE ROOM

TV ROOM

PRIVATE SKI & BOOT ROOM

LIFT ACCESS 4 OF 5 FLOORS

1 INDOOR PARKING SPACE

1 OUTDOOR PARKING SPACE

5-MIN WALK TO SKI LIFT

10-MIN WALK TO CENTRE



PERCHED ON VERBIER'S SOUTH FACING SUNLIT PLATEAU, CHALET SOROJASA OFFERS SEAMLESS ACCESS, JUST MOMENTS FROM THE MÉDRAN LIFT.

SPANNING FIVE FLOORS, ITS INTERIORS FEATURE AN OPEN LIVING SPACE—THE HEART OF THE HOME FOR GATHERING.

A GRAND ENTRANCE HALL LEADS TO THE PRINCIPAL DOUBLE BEDROOM, ALONGSIDE A DOUBLE/TWIN ROOM BOTH WITH PRIVATE ENSUITE AND BALCONY.

THE TOP FLOOR FEATURES AN OPEN-PLAN LIVING SPACE, CENTERED AROUND A STONE FIREPLACE.

THE GROUND FLOOR HOUSES THREE ADDITIONAL DOUBLE/TWIN BEDROOMS WITH EN-SUITES, TWO WITH BALCONY ACCESS.

THE SPA LEVEL EPITOMISES LUXURY WITH AN 11-METER POOL, HAMMAM, AND MASSAGE ROOM, EMBODYING TRUE ALPINE ELEGANCE. WHILE THE BASEMENT INCLUDES INDOOR PARKING AND LAUNDRY FACILITIES.

OPEN LIVING









GUEST ROOM 1



GUESTROOM 02





GUEST ROOM 03



GUEST ROOM 04



GUEST ROOM 05



ENTERTAINMENT



WELLNESS FACILITES



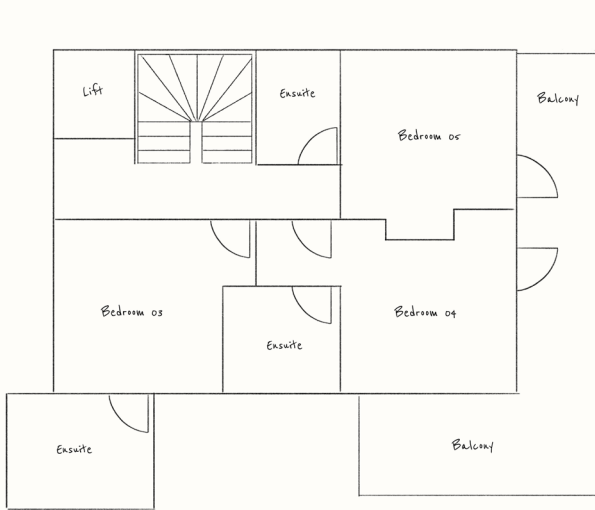




BOOTROOM

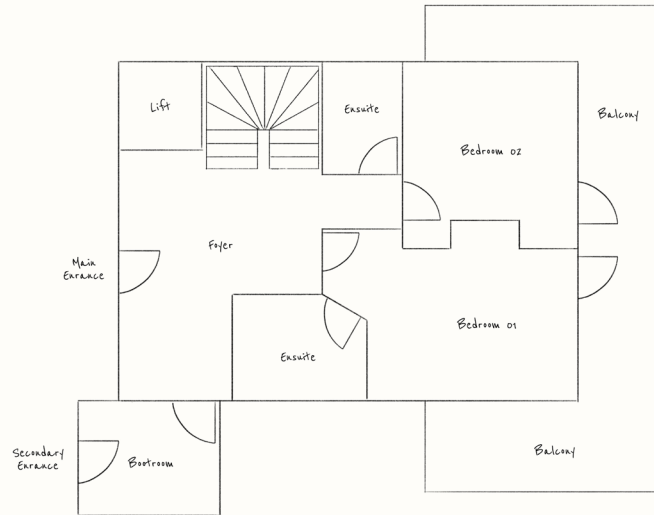


CHALET FLOOR PLAN



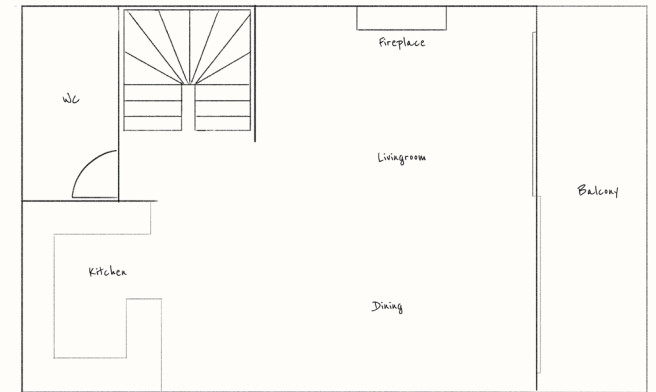
GROUND FLOOR

3 BEDROOMS
3 ENSUITES



FIRST FLOOR

ENTRANCE FOYER
BOOTROOM
2 BEDROOMS
2 ENSUITES
BALCONY



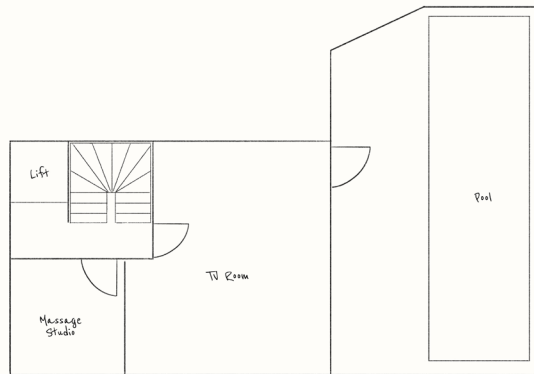
SECOND FLOOR

OPEN-PLAN LIVING AREA
OPEN-PLAN KITCHEN
DINING TABLE FOR 10 GUESTS
SOFAS CENTRED AROUND AN OPEN-FIRE
SOUTH-WESTERLEY FACING BALCONY

NOTE:

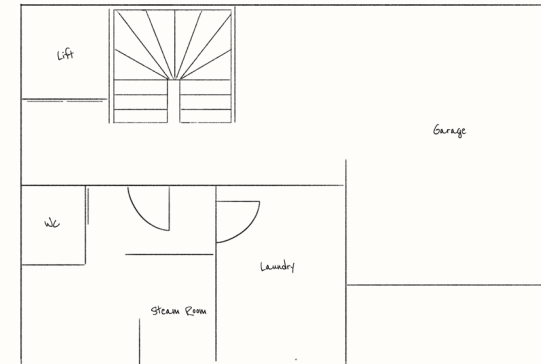
LIFT REACHES 4 / 5 FLOORS
DOES NOT ACCESS LIVING / KITCHEN

CHALET FLOOR PLAN



LOWER GROUND FLOOR

11M INDOOR SWIMMING POOL
TV ROOM
MASSAGE ROOM



BASEMENT

GARAGE (SUITABLE FOR 1 CARS)
LAUNDRY ROOM
STEAM ROOM
SEPARATE TOILET AND SHOWER ROOM

NOTE:

LIFT REACHES 4 / 5 FLOORS
DOES NOT ACCESS LIVING / KITCHEN

GUEST ROOM CONFIGURATIONS

GUEST ROOM 01

DOUBLE BED
ENSUITE
SHOWER
BATH
BALCONY

GUEST ROOM 02

DOUBLE / TWIN BED
ENSUITE
SHOWER
BALCONY

GUEST ROOM 03

DOUBLE / TWIN BED
ENSUITE
SHOWER

GUEST ROOM 04

DOUBLE / TWIN BED
ENSUITE
SHOWER
BALCONY

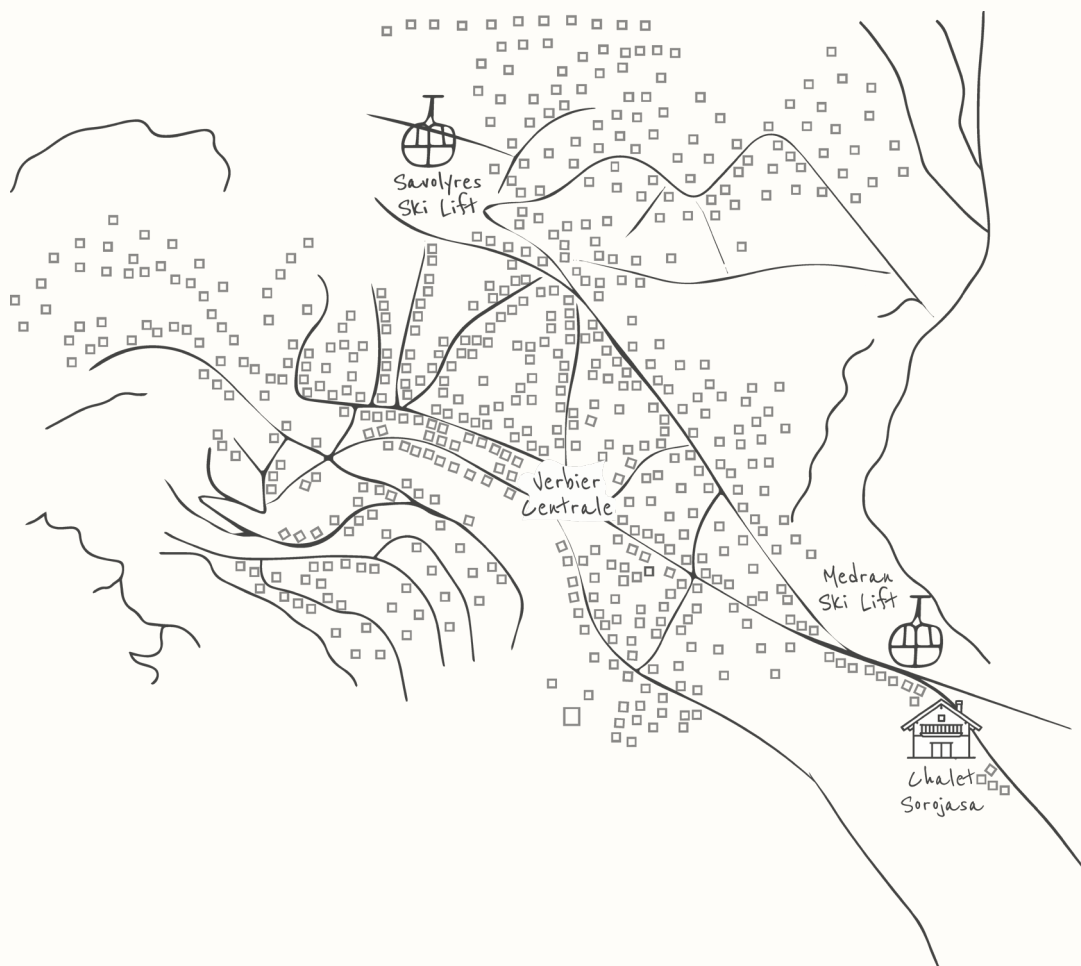
GUEST ROOM 05

DOUBLE / TWIN BED
ENSUITE
SHOWER
BALCONY

NOTE:

LIFT REACHES 4 / 5 FLOORS
DOES NOT ACCESS LIVING / KITCHEN

CHALET LOCATION



Chem. de Plénadzeu, 14B,
1936 Verbier,
Switzerland,

Google coordinates
46.08992, 7.23181

SKI LIFT 5-MINUTES WALK

PLACE CENTARLE 10-MINUTES WALK

/ 5 MINUTE BY CHAUFFEUR

BEGINNER SLOPES 4 MINUTES BY CHAUFFEUR