

A photograph of a two-story wooden chalet with a steep, snow-covered roof and multiple balconies with wooden railings. The chalet is nestled in a dense forest of snow-laden evergreen trees. The scene is captured in a cool, blue-toned light, suggesting a winter day. The chalet's architecture features exposed wooden beams and a rustic, mountainous style. The balconies are prominent, offering views of the surrounding forest. The overall atmosphere is serene and picturesque, typical of a Swiss alpine setting.

# CHALET SOROJASA

VERBIER, SWITZERLAND



## CHALET OVERVIEW

10 GUESTS

5 BEDROOMS

5 BATHROOMS

2 SEPERATE WC

FIREPLACE

INDOOR POOL

HAMMAM

MASSAGE ROOM

TV ROOM

PRIVATE SKI & BOOT ROOM

LIFT ACCESS 4 OF 5 FLOORS

1 INDOOR PARKING SPACE

1 OUTDOOR PARKING SPACE

5-MIN WALK TO SKI LIFT

10-MIN WALK TO CENTRE



PERCHED ON VERBIER'S SOUTH FACING SUNLIT PLATEAU, CHALET SOROJASA OFFERS SEAMLESS ACCESS, JUST MOMENTS FROM THE MÉDRAN LIFT.

SPANNING FIVE FLOORS, ITS INTERIORS FEATURE AN OPEN LIVING SPACE—THE HEART OF THE HOME FOR GATHERING.

A GRAND ENTRANCE HALL LEADS TO THE PRINCIPAL DOUBLE BEDROOM, ALONGSIDE A DOUBLE/TWIN ROOM BOTH WITH PRIVATE ENSUITE AND BALCONY.

THE TOP FLOOR FEATURES AN OPEN-PLAN LIVING SPACE, CENTERED AROUND A STONE FIREPLACE.

THE GROUND FLOOR HOUSES THREE ADDITIONAL DOUBLE/TWIN BEDROOMS WITH EN-SUITES, TWO WITH BALCONY ACCESS.

THE SPA LEVEL EPITOMISES LUXURY WITH AN 11-METER POOL, HAMMAM, AND MASSAGE ROOM, EMBODYING TRUE ALPINE ELEGANCE.

WHILE THE BASEMENT INCLUDES INDOOR PARKING AND LAUNDRY FACILITIES.

**OPEN LIVING**



















## **GUEST ROOM 1**







## **GUESTROOM 02**











**GUEST ROOM 03**





**GUEST ROOM 04**





**GUEST ROOM 05**





**ENTERTAINMENT**





## **WELLNESS FACILITES**









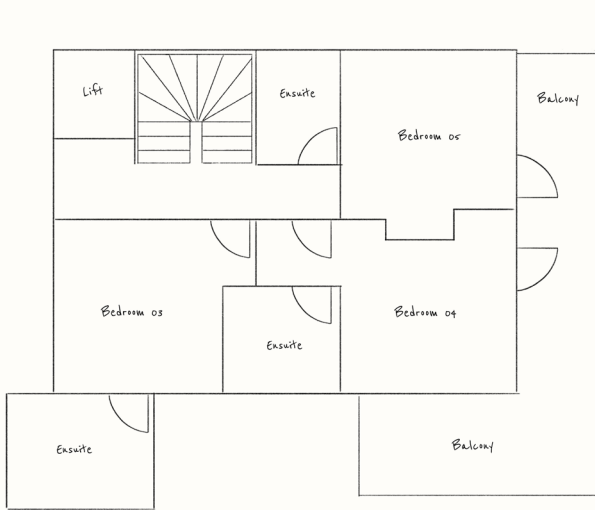


**BOOTROOM**



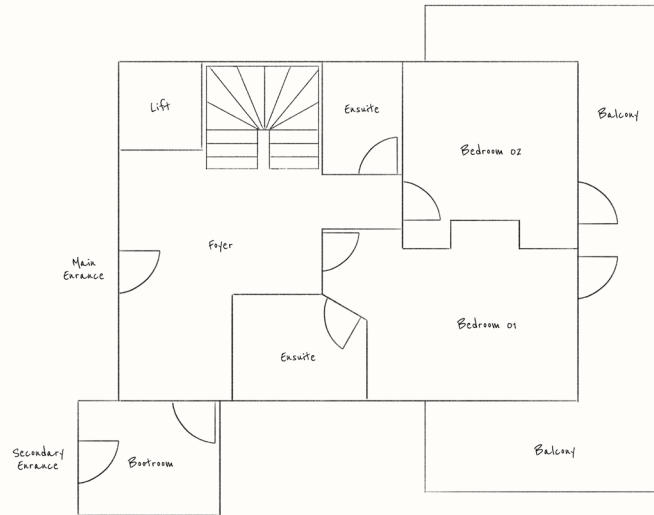


# CHALET FLOOR PLAN



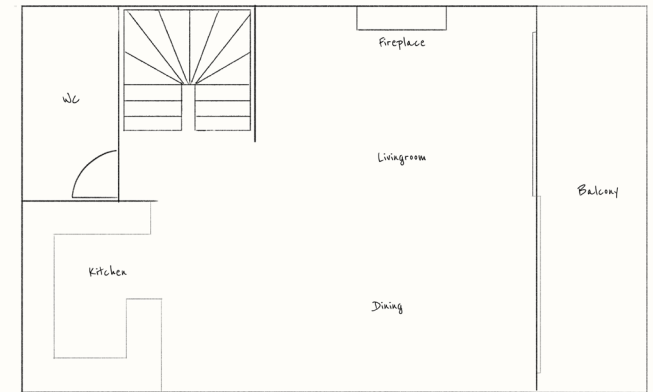
## GROUND FLOOR

3 BEDROOMS  
3 ENSUITES



## FIRST FLOOR

ENTRANCE FOYER  
BOOTROOM  
2 BEDROOMS  
2 ENSUITES  
BALCONY



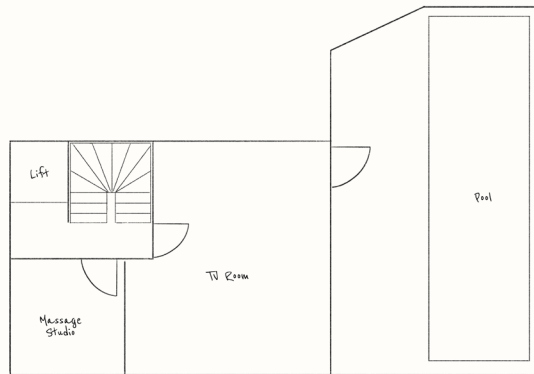
## SECOND FLOOR

OPEN-PLAN LIVING AREA  
OPEN-PLAN KITCHEN  
DINING TABLE FOR 10 GUESTS  
SOFAS CENTRED AROUND AN OPEN-FIRE  
SOUTH-WESTERLEY FACING BALCONY

## NOTE:

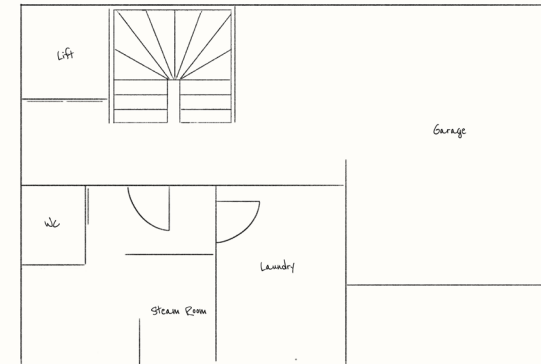
LIFT REACHES 4 / 5 FLOORS  
DOES NOT ACCESS LIVING / KITCHEN

# CHALET FLOOR PLAN



## LOWER GROUND FLOOR

11M INDOOR SWIMMING POOL  
TV ROOM  
MASSAGE ROOM



## BASEMENT

GARAGE (SUITABLE FOR 1 CARS)  
LAUNDRY ROOM  
STEAM ROOM  
SEPARATE TOILET AND SHOWER ROOM

## NOTE:

LIFT REACHES 4 / 5 FLOORS  
DOES NOT ACCESS LIVING / KITCHEN



## GUEST ROOM CONFIGURATIONS

### GUEST ROOM 01

DOUBLE BED  
ENSUITE  
SHOWER  
BATH  
BALCONY

### GUEST ROOM 02

DOUBLE / TWIN BED  
ENSUITE  
SHOWER  
BALCONY

### GUEST ROOM 03

DOUBLE / TWIN BED  
ENSUITE  
SHOWER

### GUEST ROOM 04

DOUBLE / TWIN BED  
ENSUITE  
SHOWER  
BALCONY

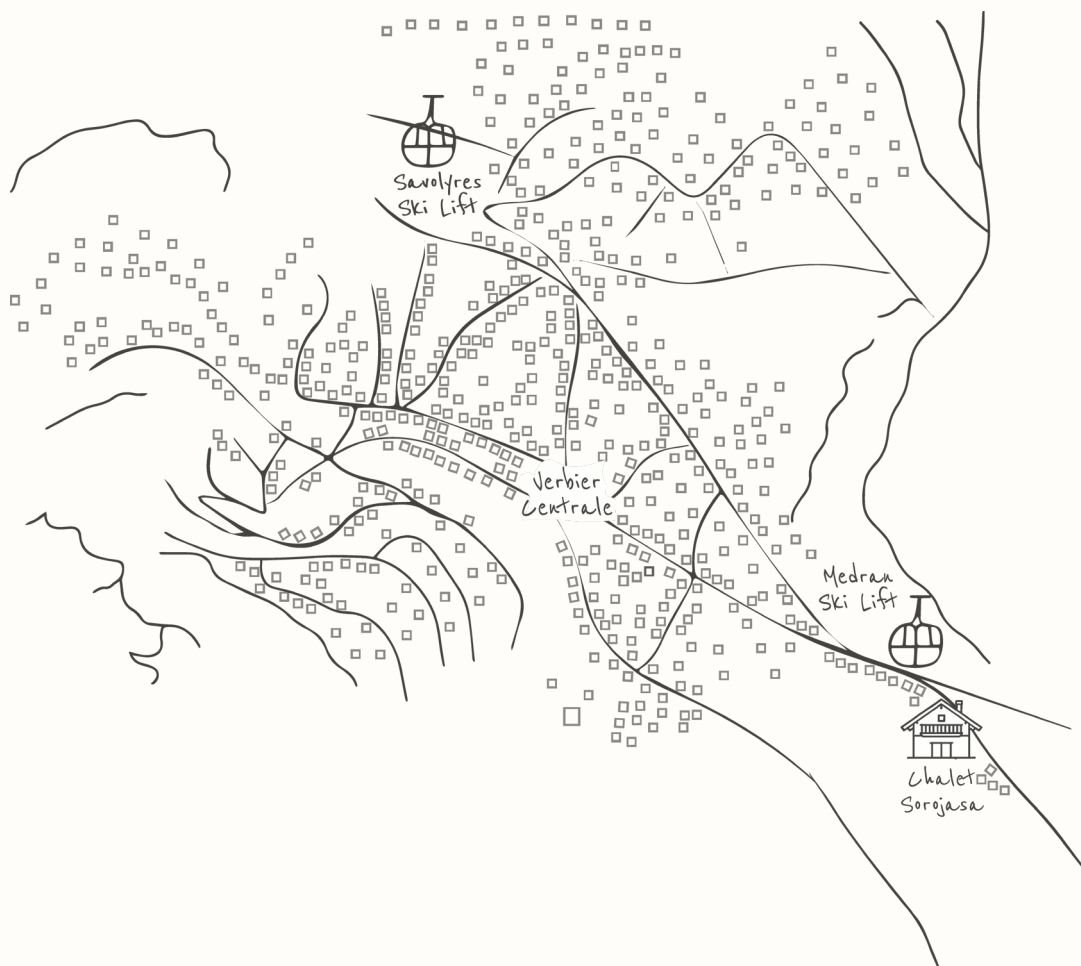
### GUEST ROOM 05

DOUBLE / TWIN BED  
ENSUITE  
SHOWER  
BALCONY

### NOTE:

LIFT REACHES 4 / 5 FLOORS  
DOES NOT ACCESS LIVING / KITCHEN

## CHALET LOCATION



Chem. de Plénadzeu, 14B,  
1936 Verbier,  
Switzerland,

Google coordinates  
46.08992, 7.23181

SKI LIFT 5-MINUTES WALK

PLACE CENTARLE 10-MINUTES WALK

/ 5 MINUTE BY CHAUFFEUR

BEGINNER SLOPES 4 MINUTES BY CHAUFFEUR