

A rustic wooden chalet with a steep gabled roof and exposed wooden beams. The facade is clad in vertical wooden planks. Two rectangular windows are visible on the upper floor. A wooden balcony with a railing featuring three snowflake carvings is positioned in front of the windows. The lower portion of the chalet is finished with grey stone masonry. In the foreground, a wooden log fence and several evergreen trees are visible. The background shows a mountainous landscape under a blue sky with light clouds.

# CHALET ETOILE DES NEIGE

MERIBEL, FRANCE



## CHALET OVERVIEW

14 GUESTS

1 MASTER GUESTROOM

4 DOUBLE GUESTROOMS

1 KIDS ROOM

6 ENSUITES

2 SEPERATE WC

FIREPLACE

OUTDOOR HOT TUB

SAUNA

INDOOR & OUTDOOR PARKING

MERIBEL CENTRE 10-MINUTES WALK /

2 MINUTES BY CHAUFFEUR

SKI LIFT 3 MINUTES BY CHAUFFEUR



SET ACROSS FOUR LEVELS, THE CHALET SLEEPS UP TO 14 GUESTS IN FIVE BEDROOMS AND A DEDICATED CHILDREN'S SUITE.

THE HEART OF THE CHALET OPENS ON THE ENTRANCE LEVEL, WHERE A LIGHT-FILLED LIVING SPACE BRINGS EVERYONE TOGETHER. SOUTH-FACING WINDOWS FRAME THE WOODED LANDSCAPE, WHILE A FIREPLACE AND A SPACIOUS DINING AREA CREATE THE PERFECT APRÈS-SKI SETTING.

A FULLY EQUIPPED KITCHEN, SKI ROOM AND SAUNA COMPLETE THE FLOOR.

THE CHALET OPENS OUT ONTO A BALCONY AND SOUTH-FACING TERRACE. A HOT TUB SITS ALONGSIDE A THOUGHTFULLY DESIGNED ALFRESCO DINING. IDEAL FOR SPRING SUNSHINE AND RELAXED OUTDOOR MEALS.

UPSTAIRS THE MASTER GUESTROOM SPANS AN ENTIRE FLOOR AND OPENS ONTO A PRIVATE SOUTH-FACING TERRACE.

ABOVE, A TRANQUIL GUESTROOM WITH A DOUBLE BED AND A SOFA DOUBLING AS A SINGLE BED, OFFERING ADDED COMFORT AND FLEXIBILITY.

THE LOWER LEVEL FEATURES A SPACIOUS EN SUITE DOUBLE GUEST ROOM, TWO ADDITIONAL DOUBLE BEDROOMS EACH WITH THEIR OWN SHOWER ROOM, AND A GENEROUS KIDS' ROOM THAT SLEEPS UP TO FOUR. ALL WITH DIRECT ACCESS TO THE BALCONY.

**OPEN LIVING**













**DINING ROOM**



















**KITCHEN**











**MASTER  
GUESTROOM 01**





















## **GUESTROOM 02**

















## **GUESTROOM 03**





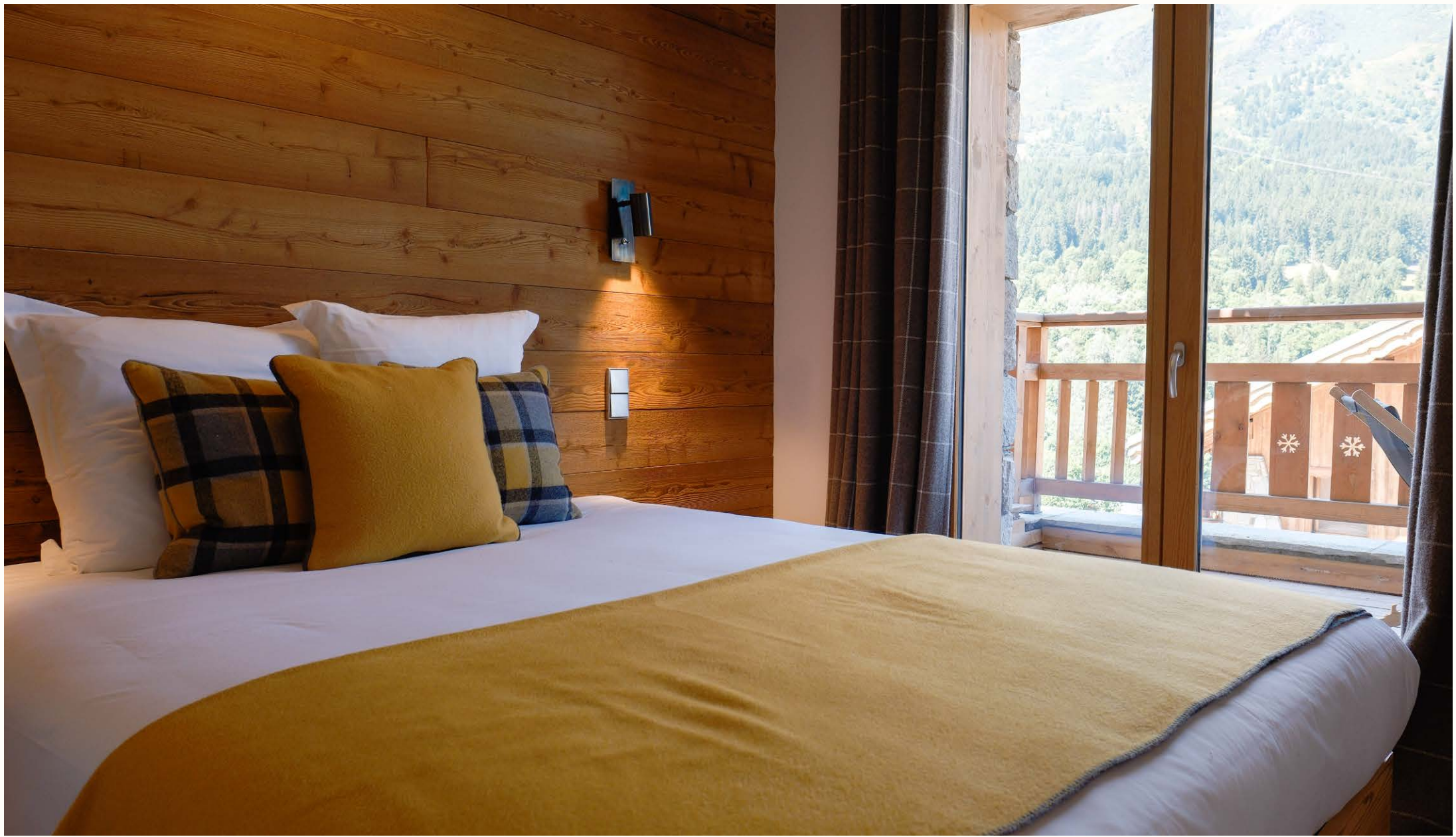






## **GUESTROOM 04**











## **GUESTROOM 05**







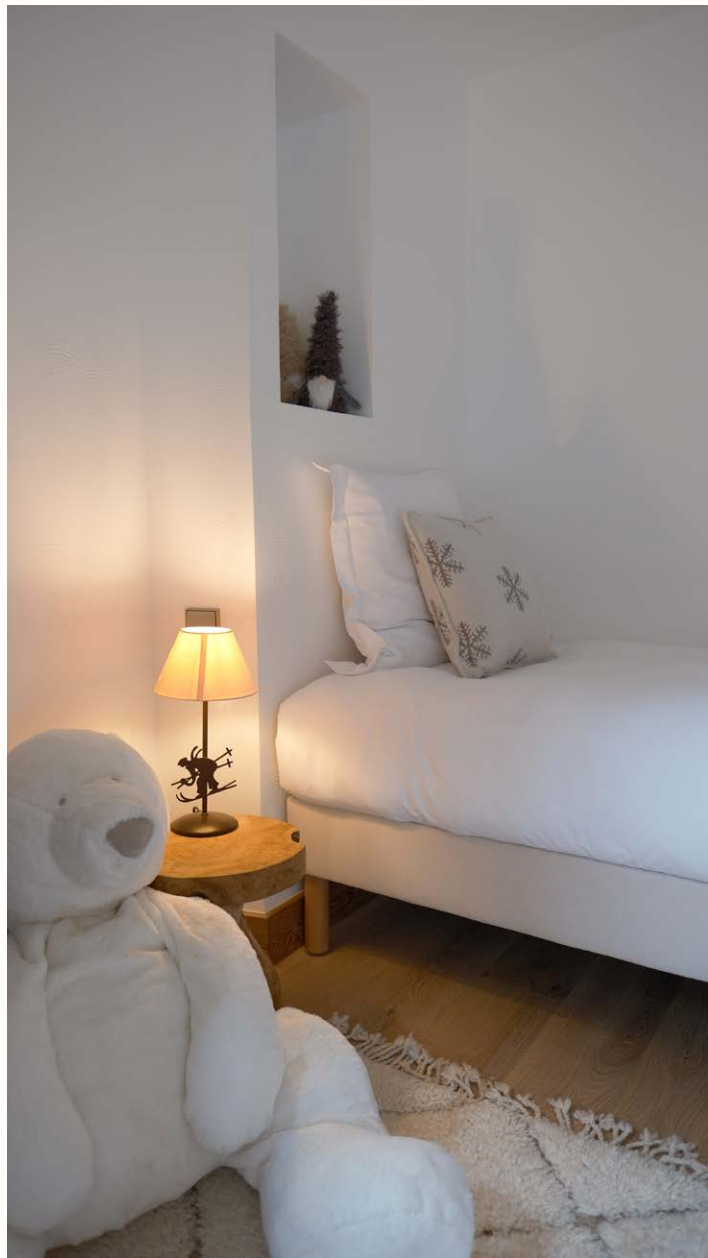
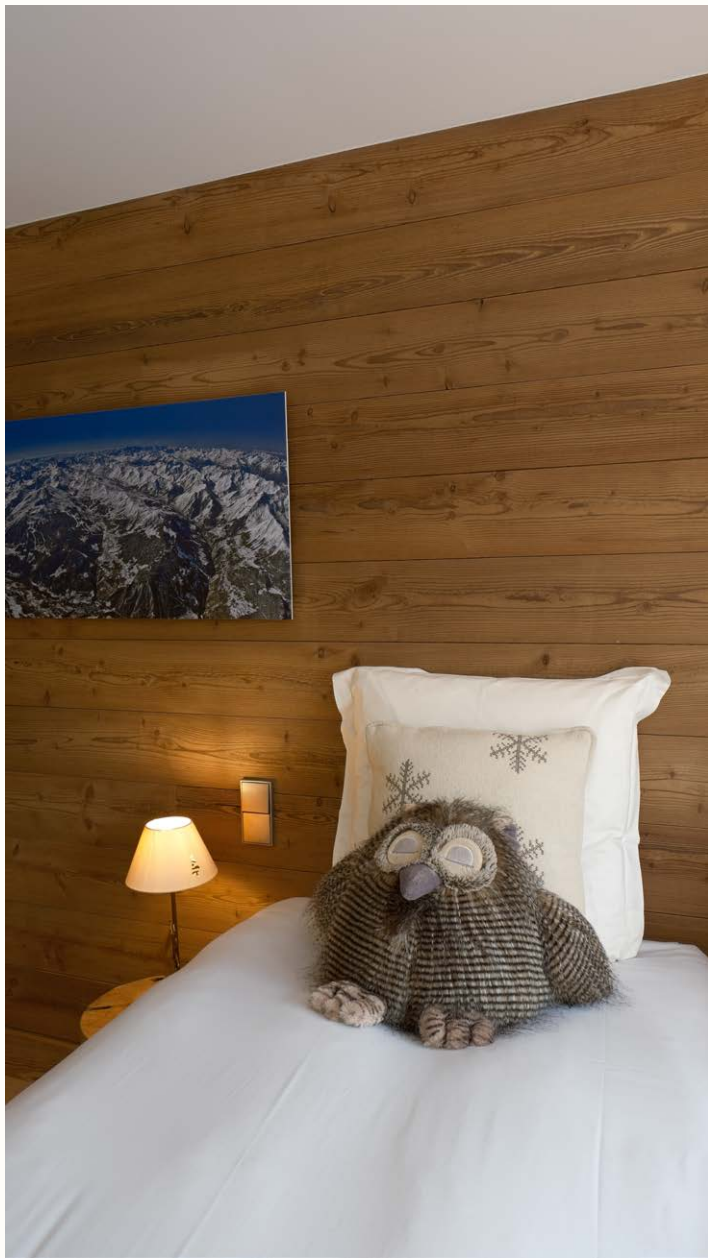


**GUEST ROOM 06**  
**FAMILY / KIDS ROOM**











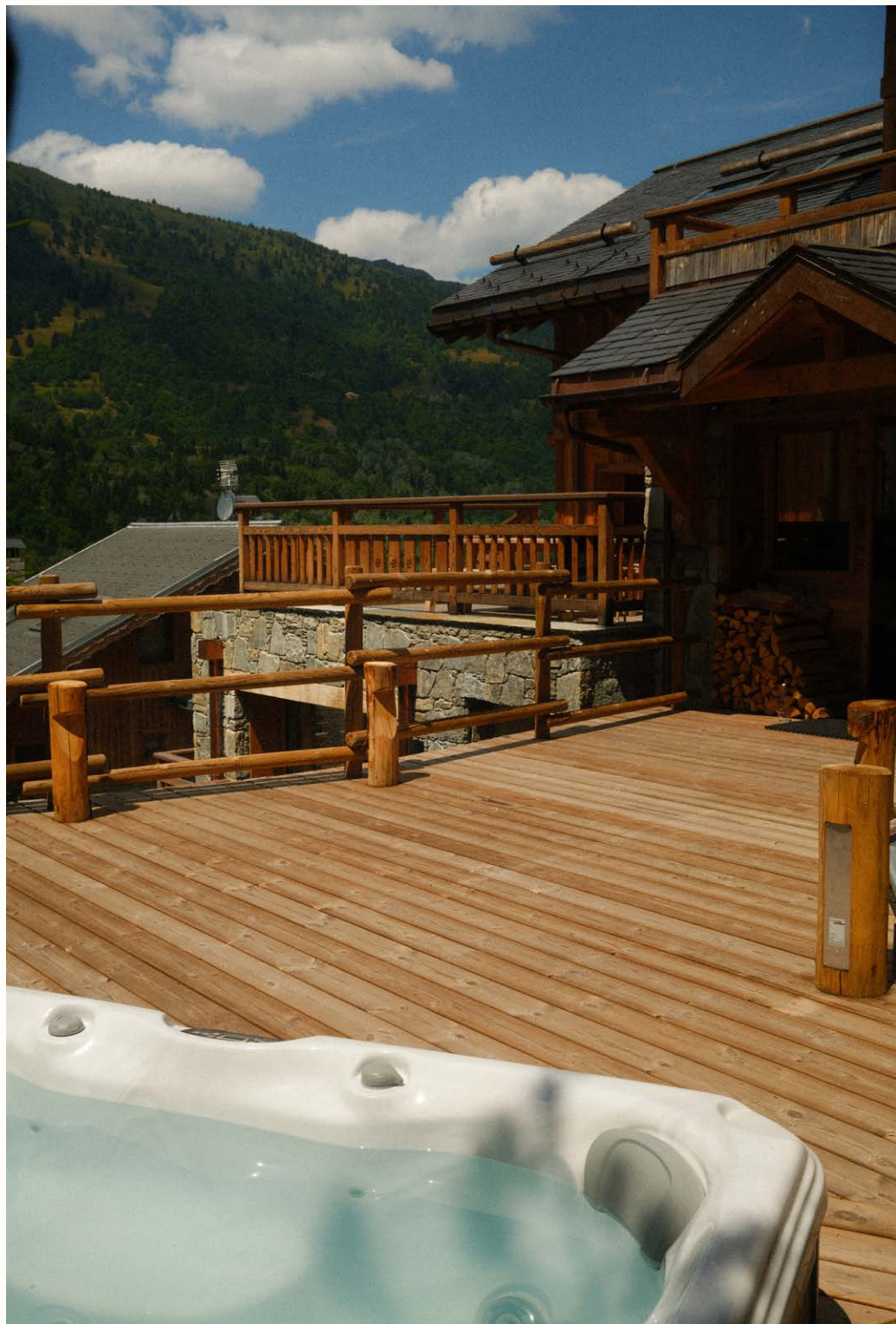


**WELLNESS**









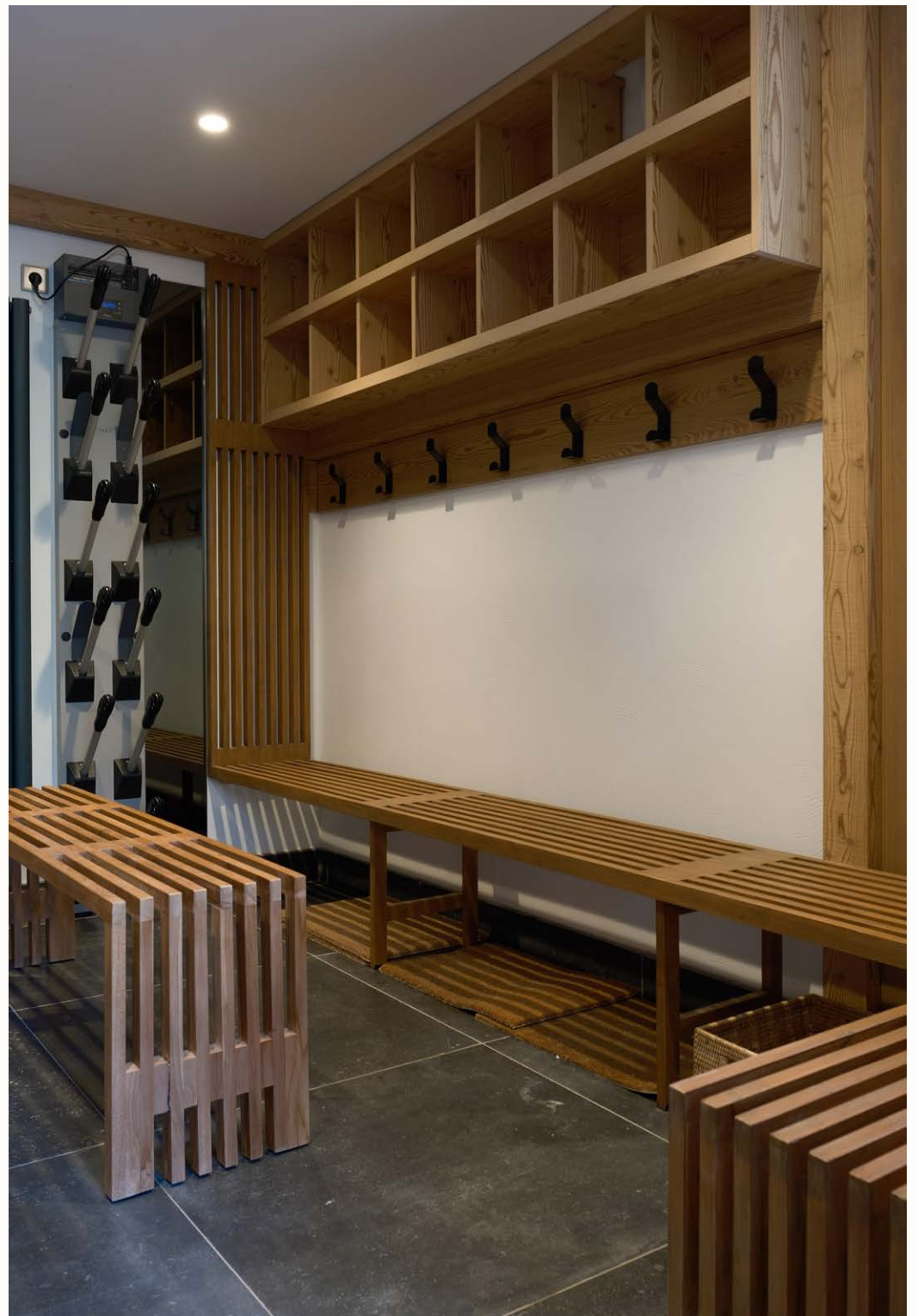




**BOOTROOM**









## **OUTDOOR FRESCO**

ETOILE DES NEIGES

468













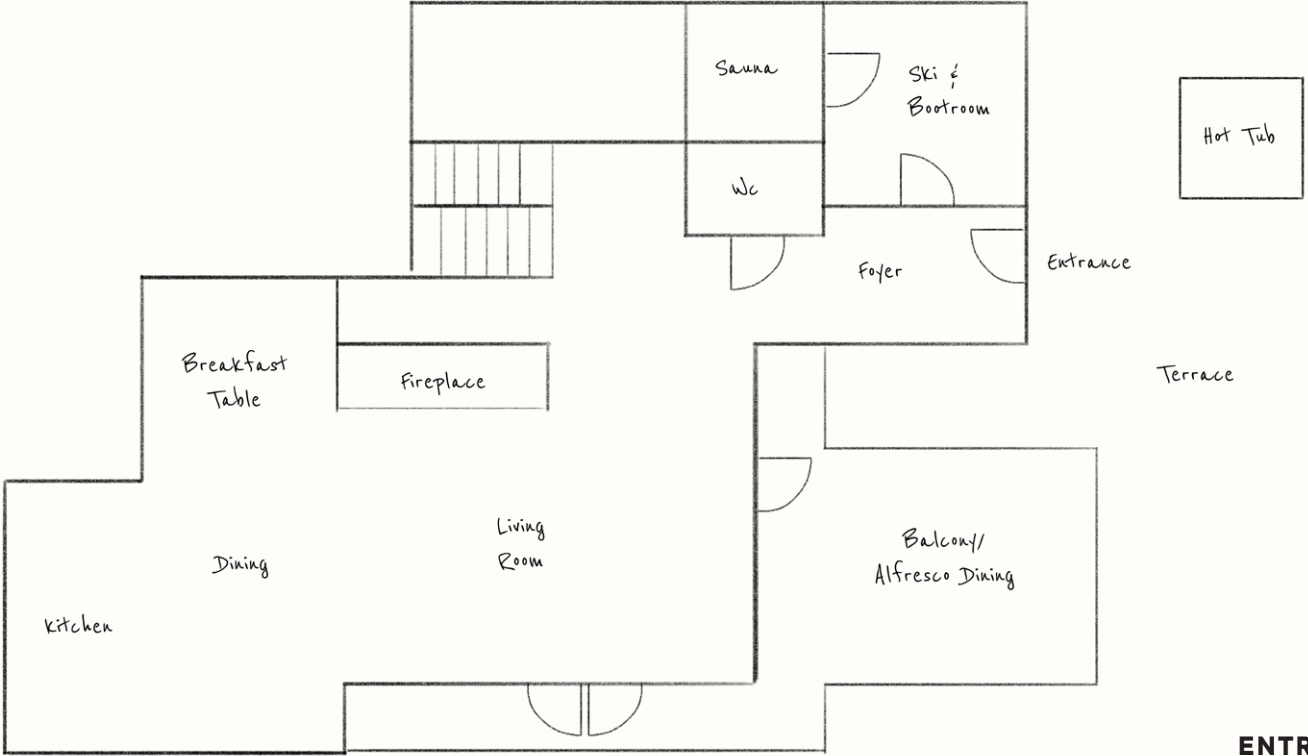








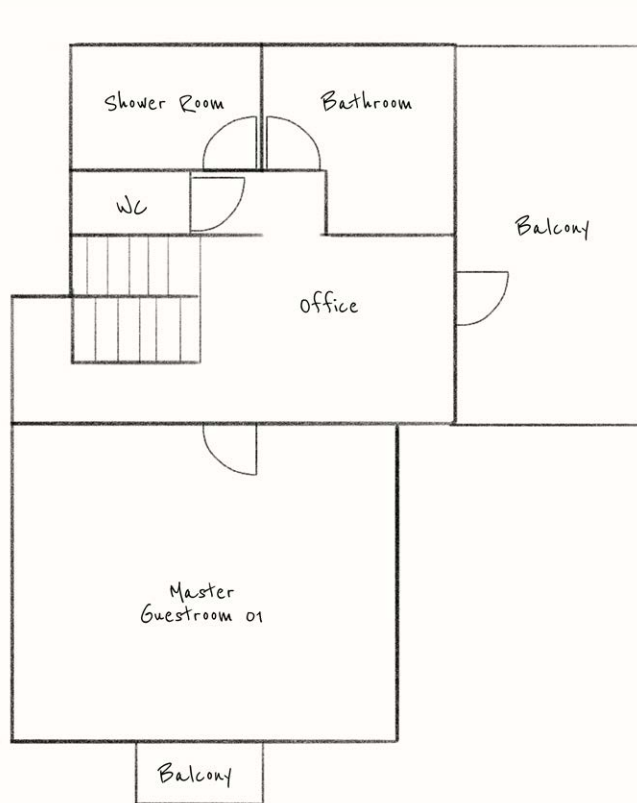
# CHALET FLOOR PLAN



## ENTRANCE FLOOR

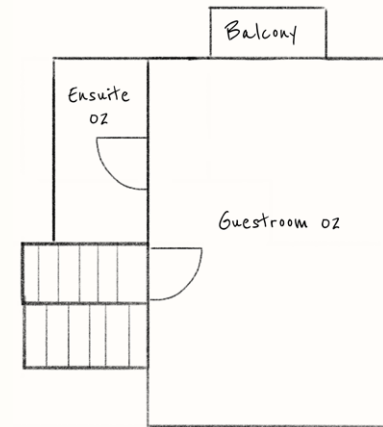
- SKI & BOOTROOM
- SAUNA
- LIVINGROOM
- DINING
- KITCHEN
- TERRACE
- BALCONY

# CHALET FLOOR PLAN



## UPPER FLOOR 01

MASTER GUEST ROOM  
DOUBLE / TWIN BED  
SHOWER ROOM  
BATHROOM  
OFFICE

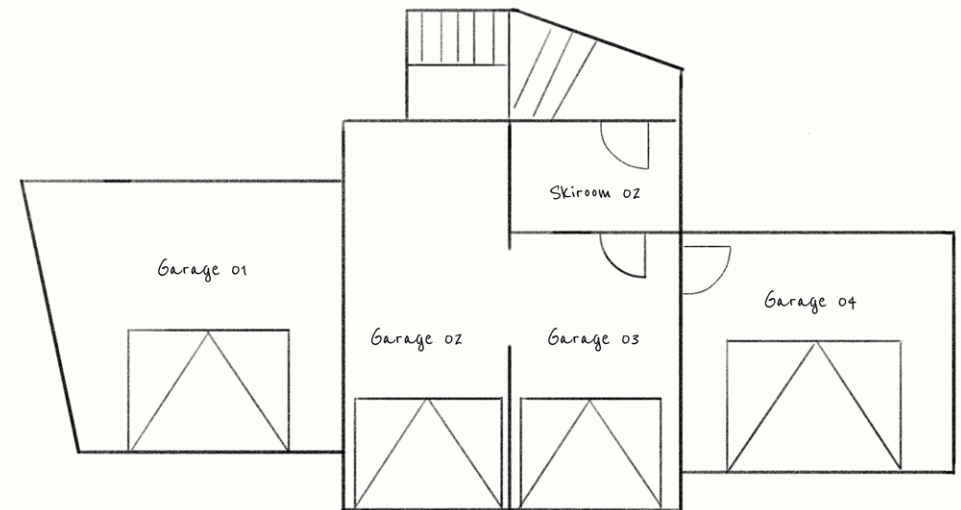
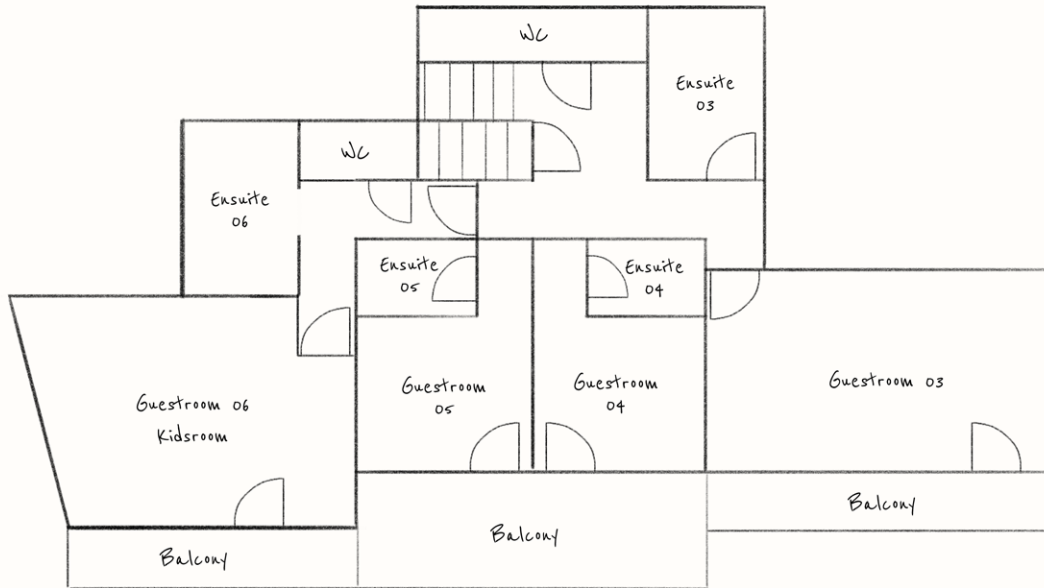


## UPPER FLOOR 02

GUEST ROOM 02  
DOUBLE / TWIN BED  
SOFA BED  
PRIMARY ENSUITE  
SHOWER



# CHALET FLOOR PLAN



## LOWER FLOOR 01

MASTER GUEST ROOM  
DOUBLE / TWIN BED  
SHOWER ROOM  
BATHROOM  
OFFICE

## GUEST ROOM 06

X4 SINGLE BEDS  
ENSUITE  
SHOWER  
BALCONY

## GUEST ROOM 05

DOUBLE BED  
ENSUITE  
SHOWER  
BALCONY

## GUEST ROOM 04

DOUBLE BED  
ENSUITE  
SHOWER  
BALCONY

## GUEST ROOM 03

DOUBLE / TWIN BED  
ENSUITE  
SHOWER  
BALCONY

## LOWER FLOOR 02

SKI ROOM 02  
GARAGE 01 - 04

## GUEST ROOM CONFIGURATIONS

### MASTER GUEST ROOM

DOUBLE / TWIN BED  
WC  
SHOWER ROOM  
BATHROOM  
BALCONY

### GUEST ROOM 02

DOUBLE / TWIN BED  
SOFA BED  
ENSUITE  
SHOWER

### GUEST ROOM 03

DOUBLE / TWIN BED  
ENSUITE  
SHOWER  
BALCONY

### GUEST ROOM 04

DOUBLE BED  
ENSUITE  
SHOWER  
BALCONY

### GUEST ROOM 05

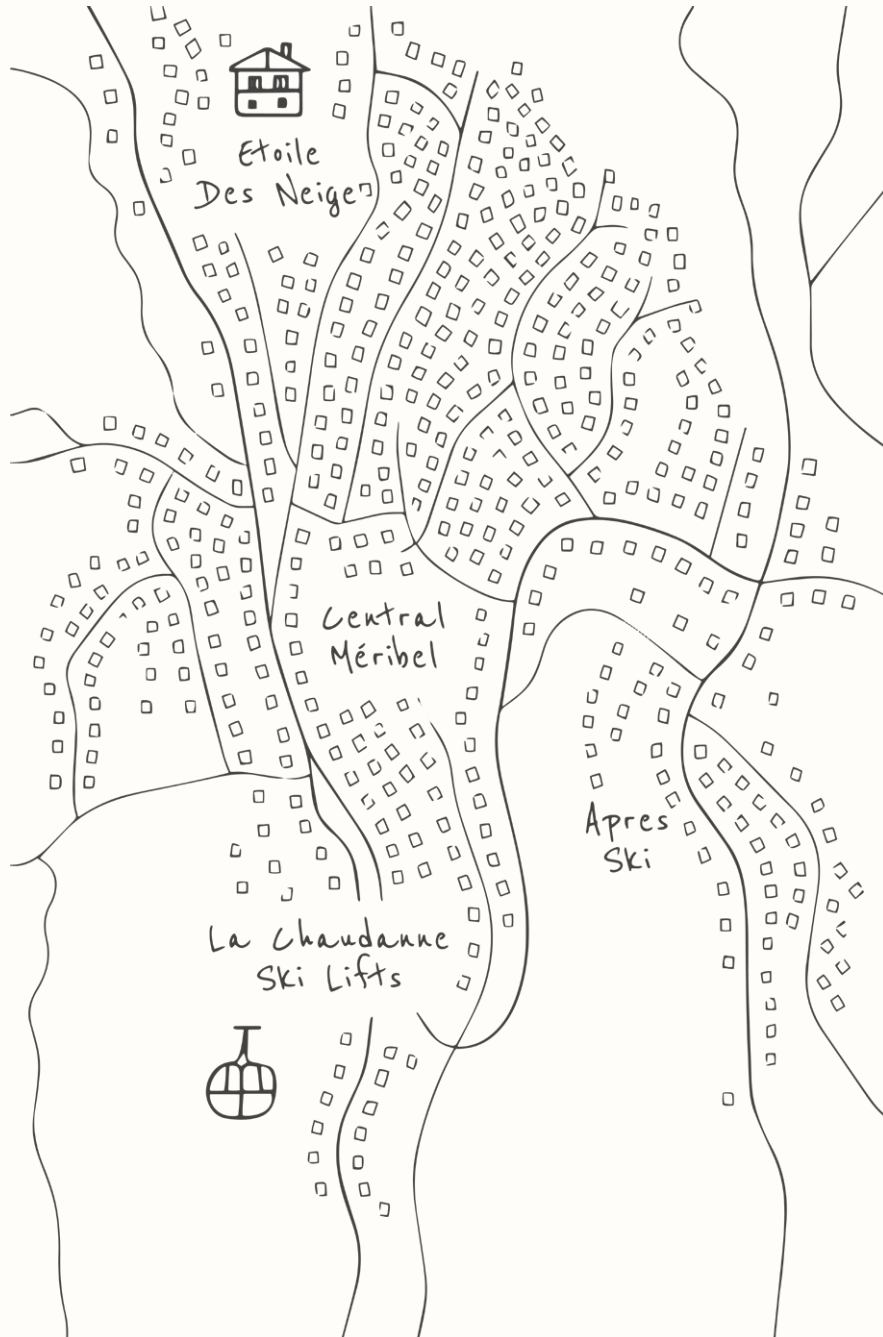
DOUBLE BED  
ENSUITE  
SHOWER  
BALCONY

### GUEST ROOM 06

X4 SINGLE BEDS  
ENSUITE  
SHOWER  
BALCONY



## CHALET LOCATION



468 Rte de la Piã du Caro,  
73550 Les Allues,  
France

Google coordinates  
45°24'12.8"N 6°33'55.0"E

SKI LIFT 3 MINUTES BY CHAUFFEUR  
CENTRAL MERIBEL 10-MINUTES WALK /  
2 MINUTES BY CHAUFFEUR