

APARTMENT STEFANO

Verbier, Switzerland



CHALET OVERVIEW

8 guests

3 bedrooms

3 bathrooms

(2 ensuite bathrooms, 1 separate shower room & WC and 1 separate WC)

Outdoor hot tub

Gas Fireplace

Terrace off living area

Balcony (shared by the 2 main bedrooms)

1 parking space

130.32 sqm

Verbier centre 5 minute by chauffeur

Ski lift Medran 7 minute by chauffeur

Nursery slopes 4 minute by chauffeur



Newly renovated, this contemporary alpine apartment sits in one of Verbier's most secluded corners. The south-facing position delivers unobstructed mountain and valley views down toward Le Chable, with full sun exposure and a rare sense of privacy. The terrace, accessed directly from the living area, holds a brand-new luxury hot tub and looks straight out across the valley.

The open living area flows naturally between kitchen, dining and lounge, anchored by a gas fireplace and floor-to-ceiling windows that frame the views. The kitchen handles self-catered weeks as easily as it supports a private chef, fitted with Siemens appliances, induction hob and Nespresso machine. A Marshall sound system carries through the space without dominating it.

The apartment sleeps eight across three bedrooms. Two doubles (one a master suite with ensuite and balcony, the other with its own balcony and a bathroom across the hall) offer flexible sleeping for adults or older children. The bunk room, tucked just off the living area, sleeps four across two sets of bunk beds (4 singles) and includes a desk and ensuite shower, with use of a separate wc off the hallway, making it genuinely functional rather than a token kids' space.

LIVINGROOM





DINING ROOM



KITCHEN





HALLWAY



GUEST ROOM 01





ENSUITE 01



GUEST ROOM 02



SEPERATE SHOWER ROOM/ WC



Bunk room



Bunk room shower and sink

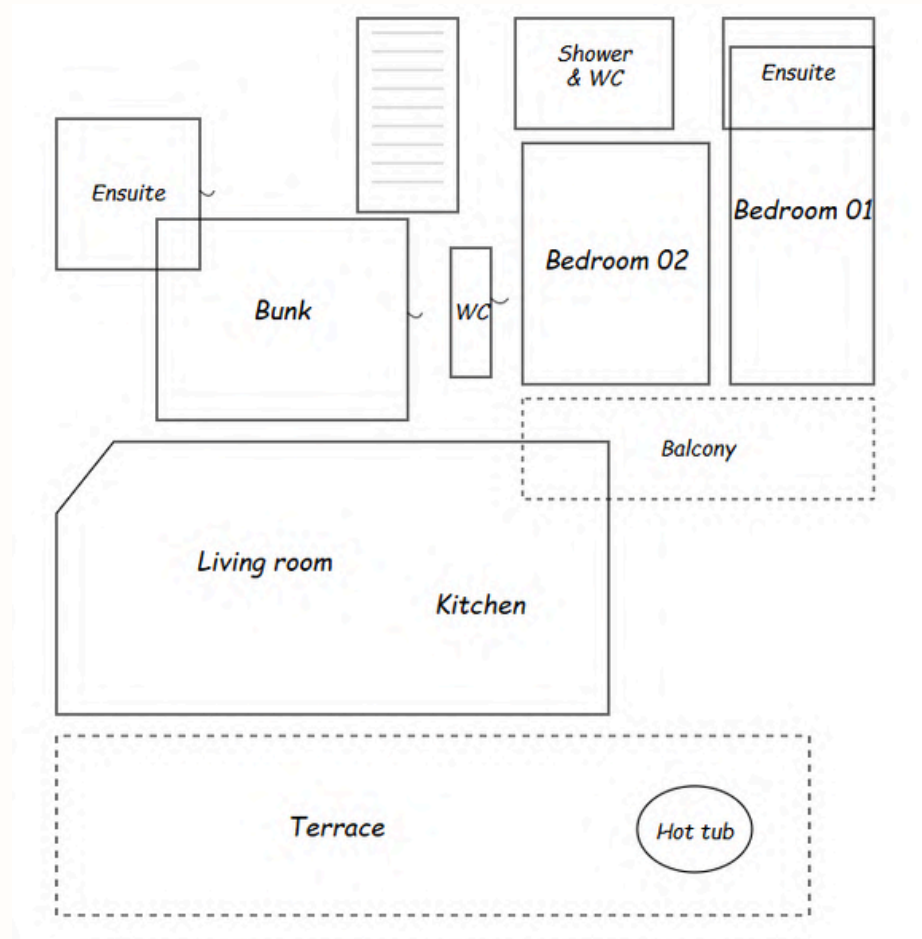


**OUTDOOR AND
WELLNESS**





APARTMENT FLOOR PLAN



Living room: 48.74m²

Bunk room: 13.67m²

Bedroom 1: 12.12m²

Bedroom 2: 8.07m²

Total size: 130.32m²

GUEST ROOM CONFIGURATIONS

MASTER GUEST ROOM 01

DOUBLE BED
ENSUITE WITH WC
SHOWER
DOUBLE SINKS
BALCONY

GUEST ROOM 02

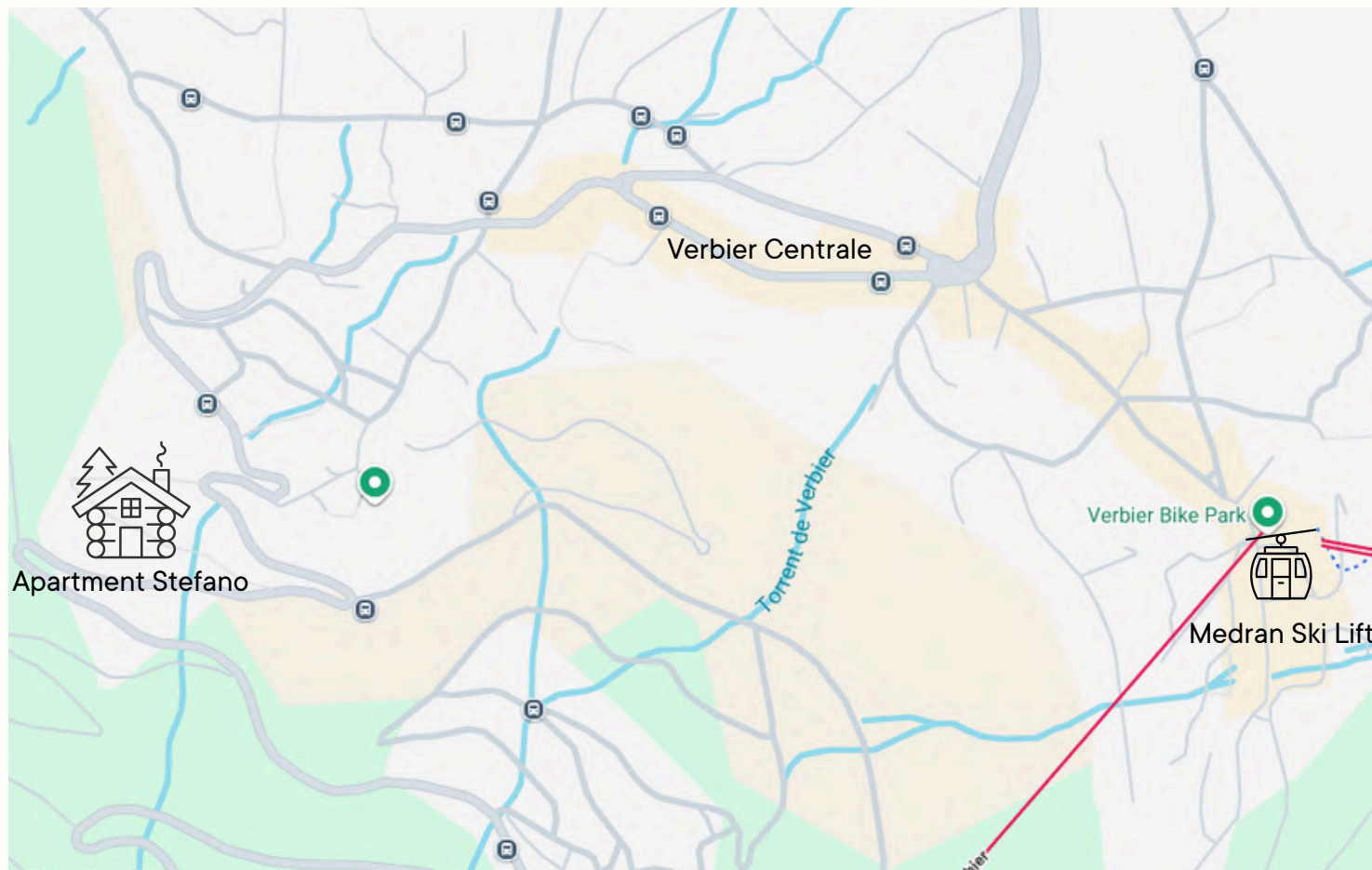
DOUBLE
BALCONY
SHARED BATHROOM WITH WC ACROSS
HALL

GUEST ROOM 03 BUNK ROOM

SHOWER AND SINK ENSUITE (SEPERATE WC OFF HALLWAY)
2 BUNK SET UPS (4 SINGLES)

APARTMENT LOCATION

Apartment Stefano
Val de Bagnes, Switzerland



Verbier centre 5 minute by chauffeur
Ski lift Medran 7 minute by chauffeur
Nursery slopes 4 minute by chauffeur

GOOGLE COORDINATES

46°05'36.6"N 7°13'01.0"E