



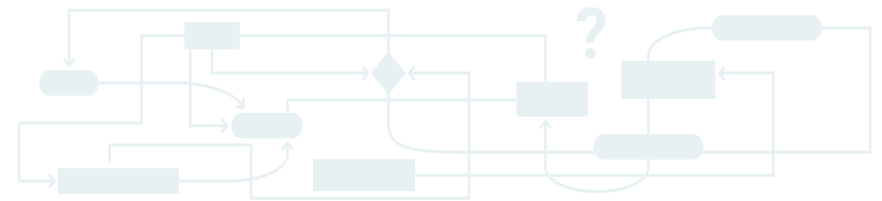
Make confident, data-driven decisions about connected devices you own, manage, or sell

Apkudo is delivering a new standard for working in the connected device supply chain



No visibility. No system-wide collaboration. No trust.

Traditional secondary device supply chain systems fall short—losing revenue opportunities and adding to waste. Apkudo is pioneering smarter, more efficient ways to unlock value and drive sustainability.



Engineering Smarter Solutions

Transform device management with the perfect synergy of humans and machines. By combining cutting-edge robotics, AI, and software, Apkudo empowers customers to revolutionize their operations with precision and efficiency.



Powering Comprehensive Device Insights

Unlock valuable insights to inform better business decisions and streamline operations. Enhance efficiency, maximize profitability, and boost customer satisfaction by leveraging internal and external data.



Building Trust through Transparency

Profitability and sustainability go hand-in-hand. The circular economy thrives on trusted data within a sustainable digital network—reducing waste, maximizing device value, and minimizing labor costs to create a win-win for business and the planet.

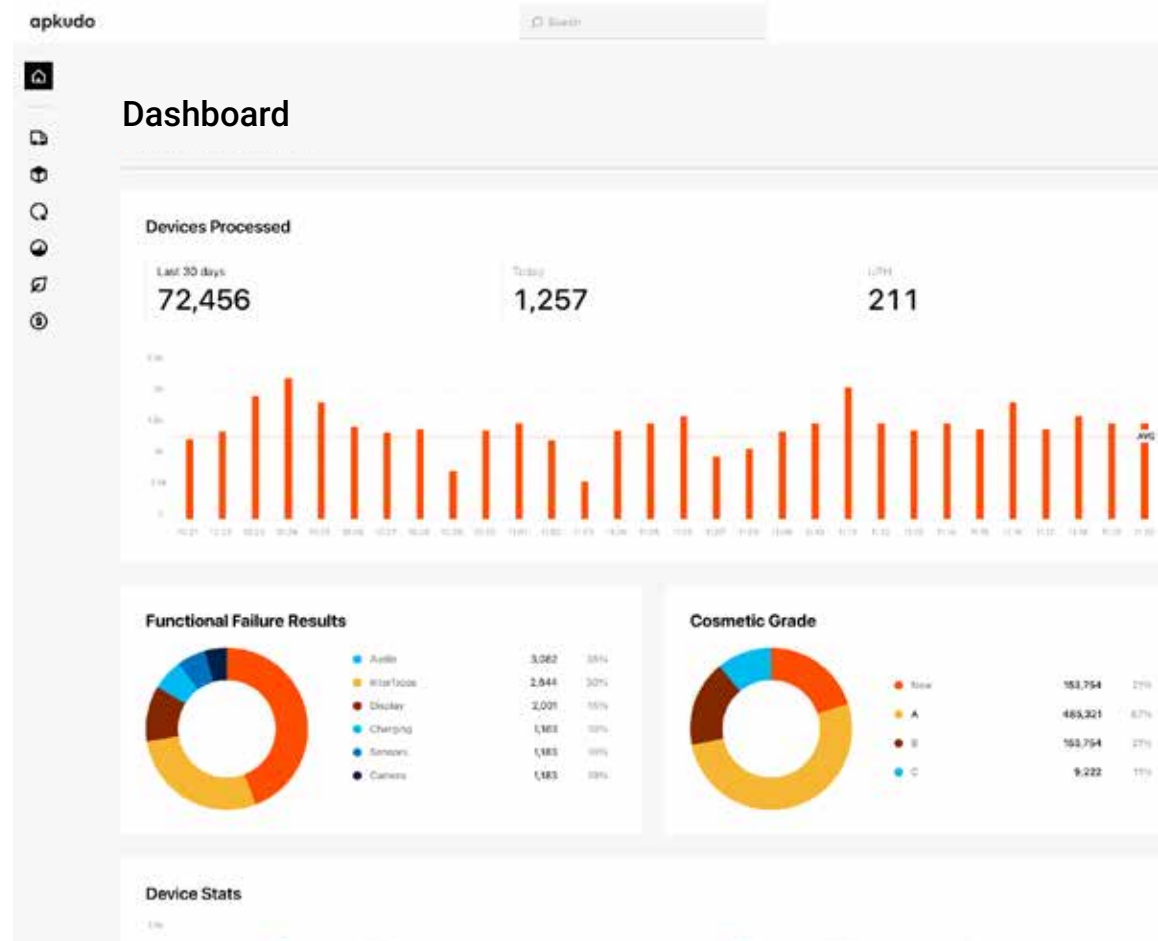
Leading companies in the global device ecosystem rely on Apkudo - from OEMs to carriers to enterprises and more.



Maximize value around the connected device supply chain

The Apkudo Platform provides a comprehensive solution tailored to how and where you operate in the connected device lifecycle — from pre-launch to final disposition.

- **Comprehensive Device Tracking:** Tracks each device by IMEI with historical and real-time data, ensuring end-to-end traceability and chain of custody.
- **Quality & Fraud Alerts:** Flags quality and fraud risks early to minimize device returns and ancillary costs.
- **Sustainability Compliance:** Generates ESG and circularity reports with device-level Certificates of Data Erasure.
- **Unified Data View:** Centralizes grading, KPI tracking, performance, downtime metrics, and more.
- **Disposition & Repair Intelligence:** Offers insights on condition, repair costs, resale potential, and more to identify opportunities, recognize trends, and inform strategic decisions.



Launch

Improve device quality, enhance user satisfaction, and reduce device returns and warranty claims.



Trade In

Advance trade-in acquisition and accuracy by focusing on optimizing the consumer experience.



Recover

Automate and track the recovery and disposition of all corporate-owned IT assets.



Process

Maximize velocity, quality, and cost efficiency of cosmetic and functional assessment.



Resell

Receive the best price for a used device by accessing the broadest possible market.



Follow our journey
on LinkedIn