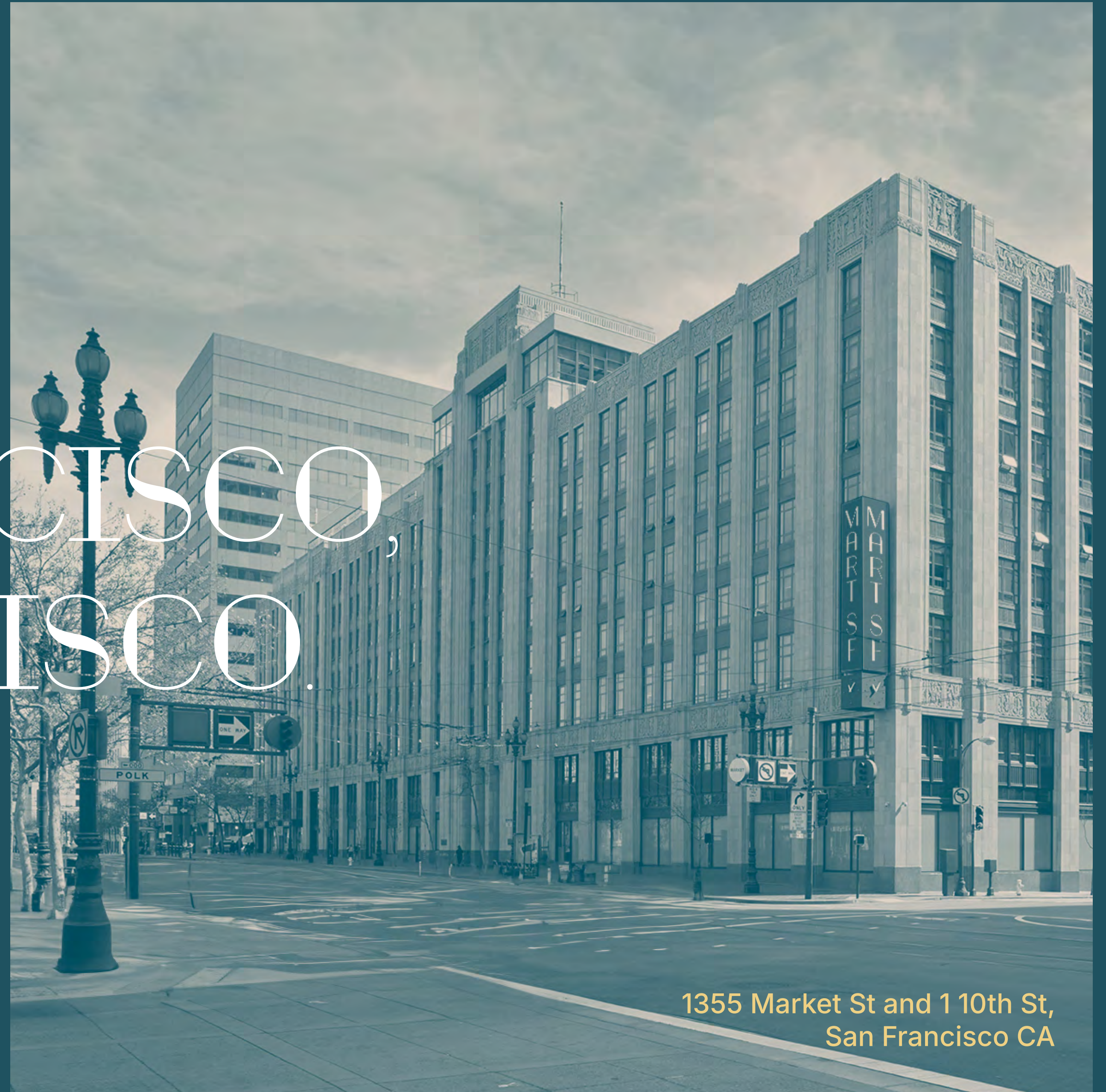


MART SF

# A LANDMARK FOR SAN FRANCISCO, BY SAN FRANCISCO.

*Largest Campus in San Francisco  
Over 1 Million SF Available Now*

**CBRE**



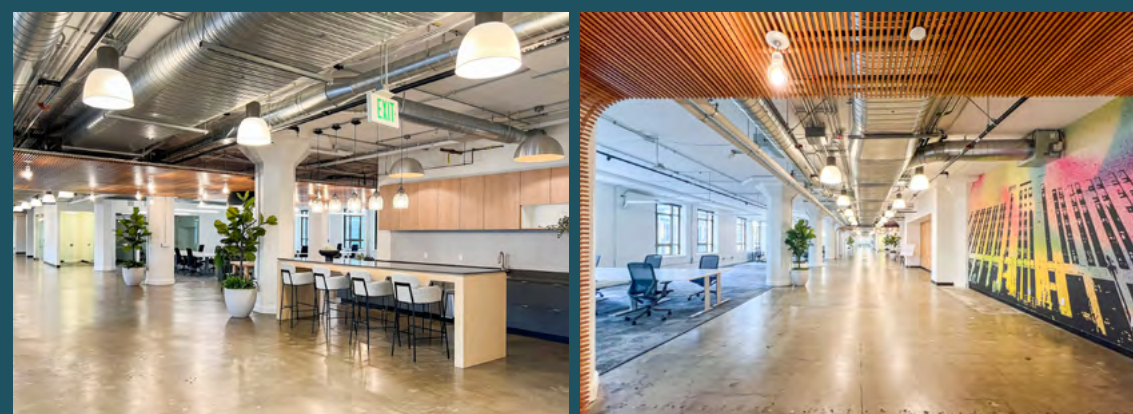
1355 Market St and 1 10th St,  
San Francisco CA

# FLOOR 4

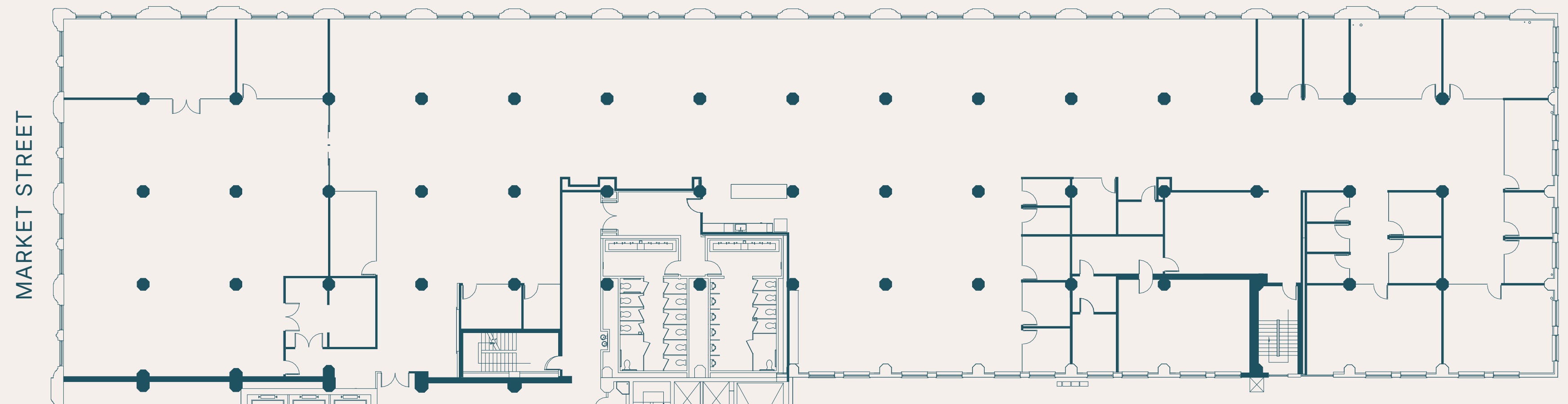
1355 Market Street

±25,475 RSF

- Highly creative suite with polished concrete floors and exposed ceilings
- Great window-line and natural light
- Large kitchen/all-hands space
- Mostly open plan with space for 120+ desks
- 22+ meeting rooms of various sizes



## THE MART SF

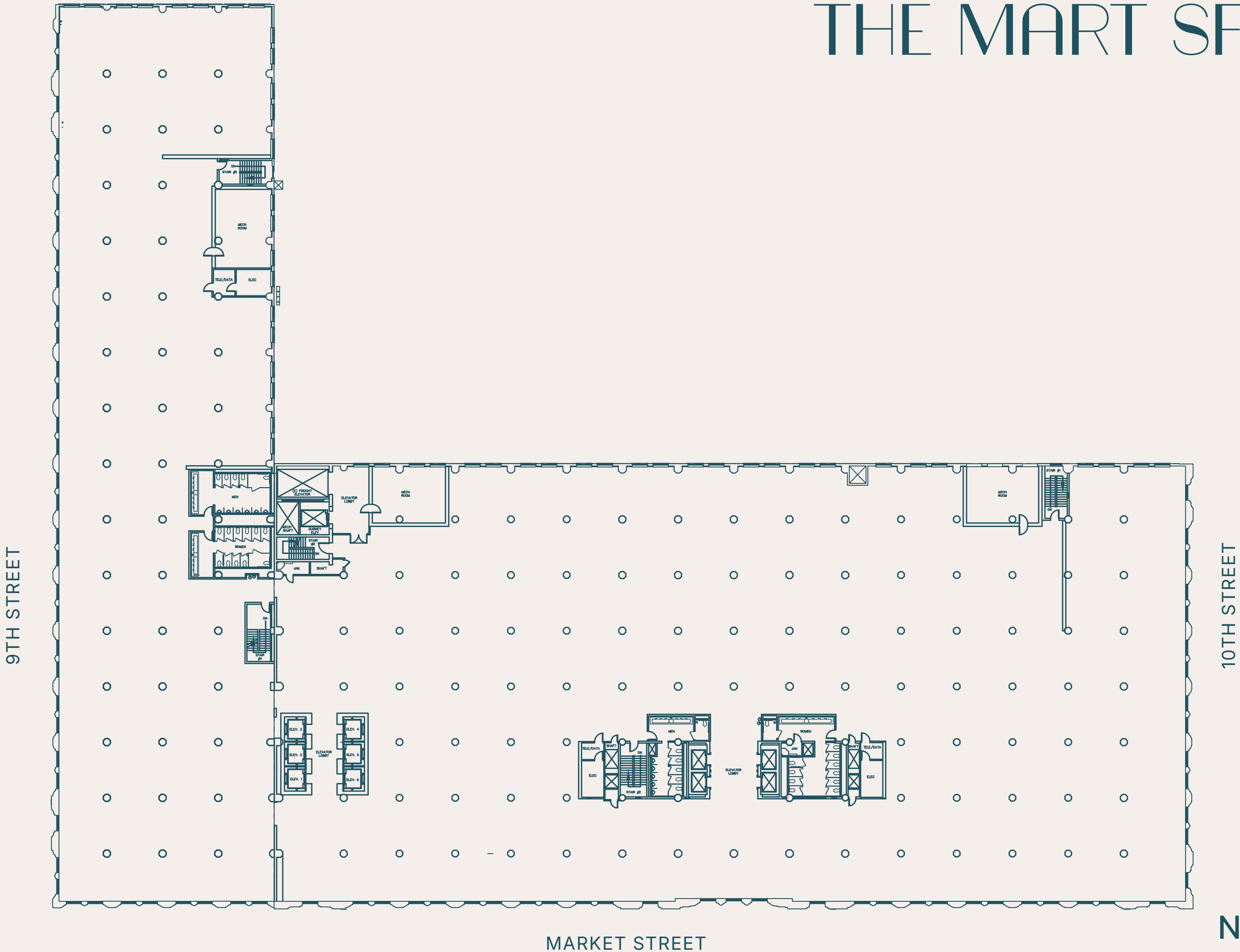


FLOOR 5

1355 Market Street

±78,792 RSF

THE MART SF

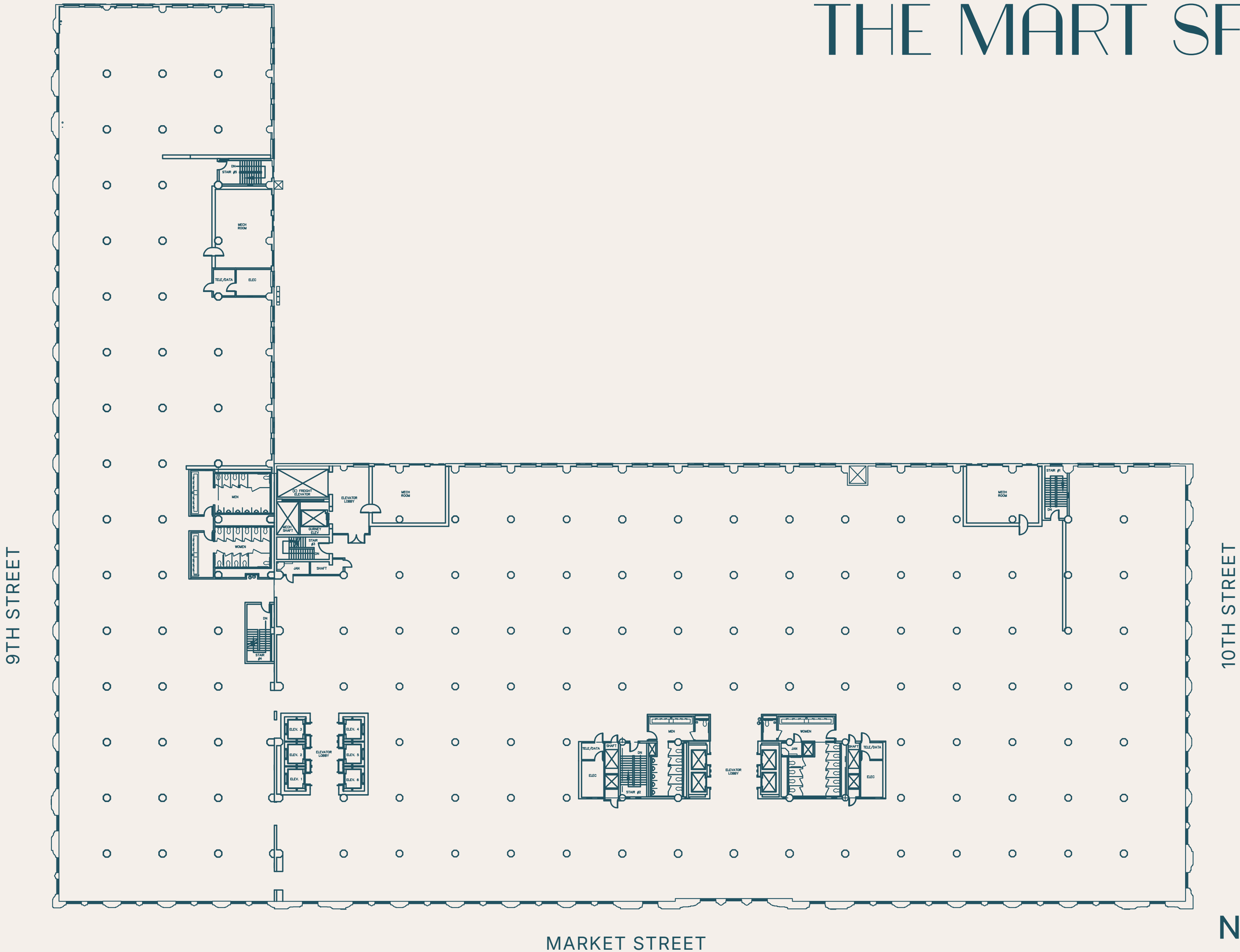


FLOOR 6

1355 Market Street

±78,792 RSF

THE MART SF

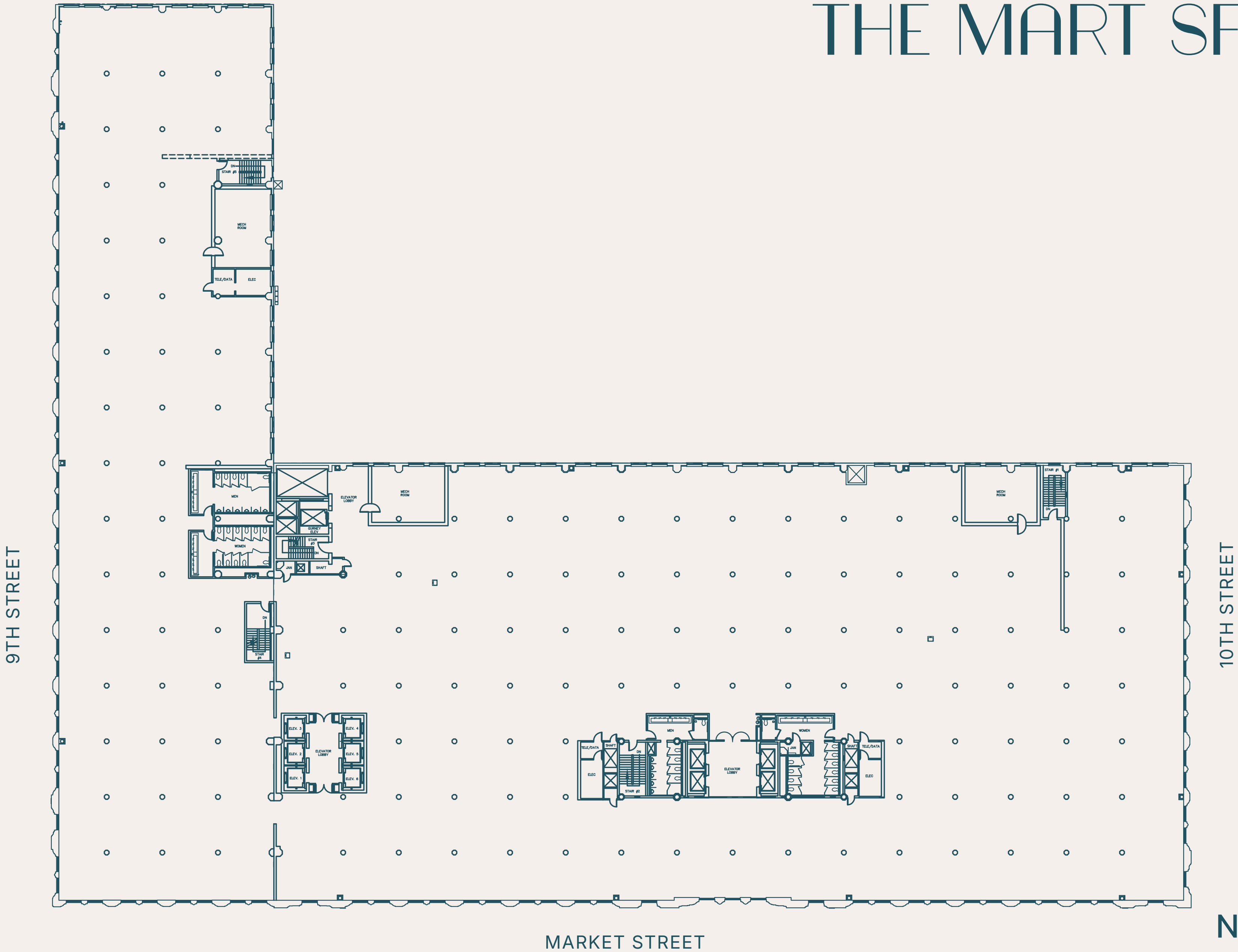


FLOOR 7

1355 Market Street

±78,792 RSF

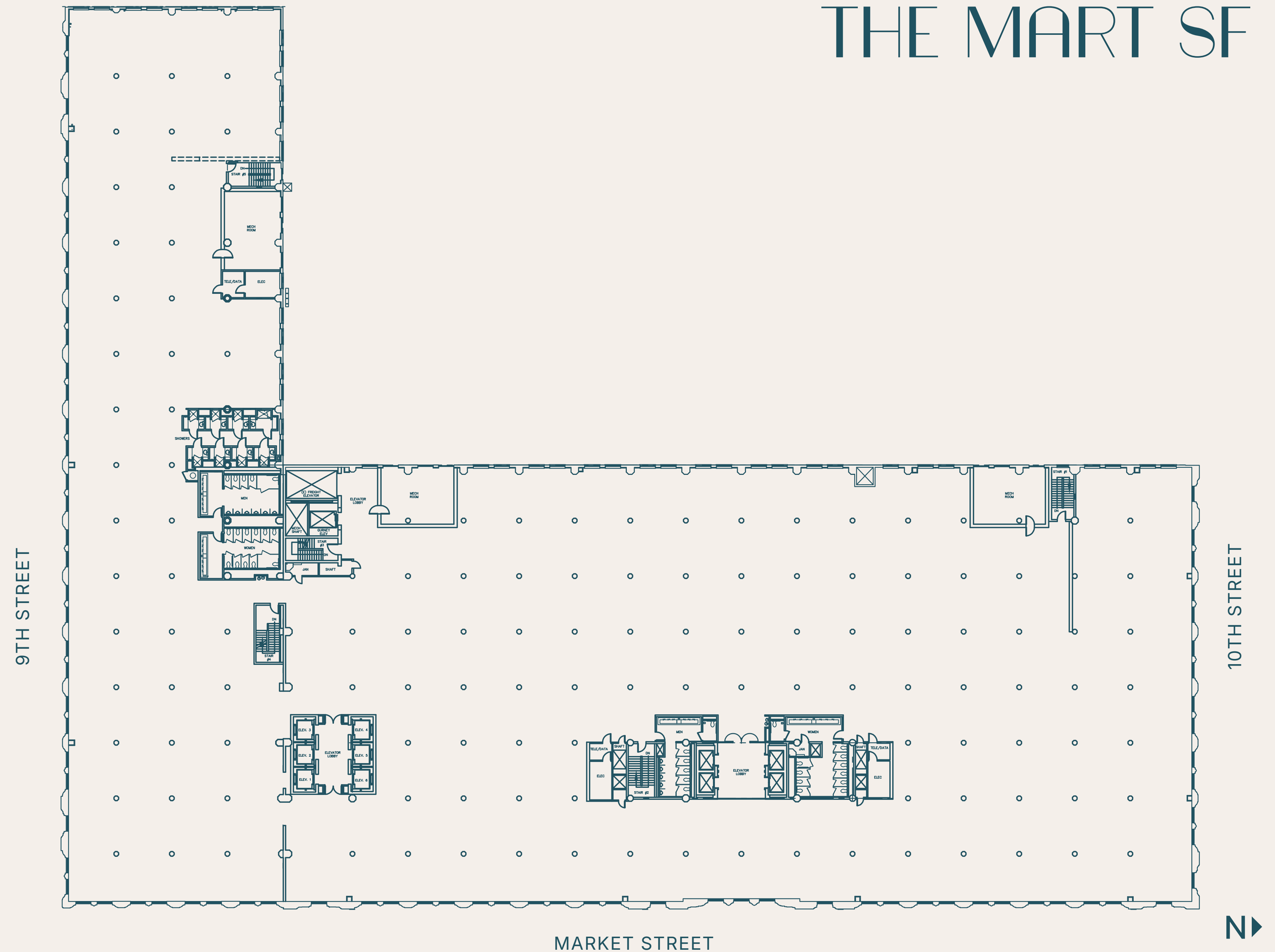
THE MART SF



# 1355 Market Street

±78,792 RSF

# THE MART SF

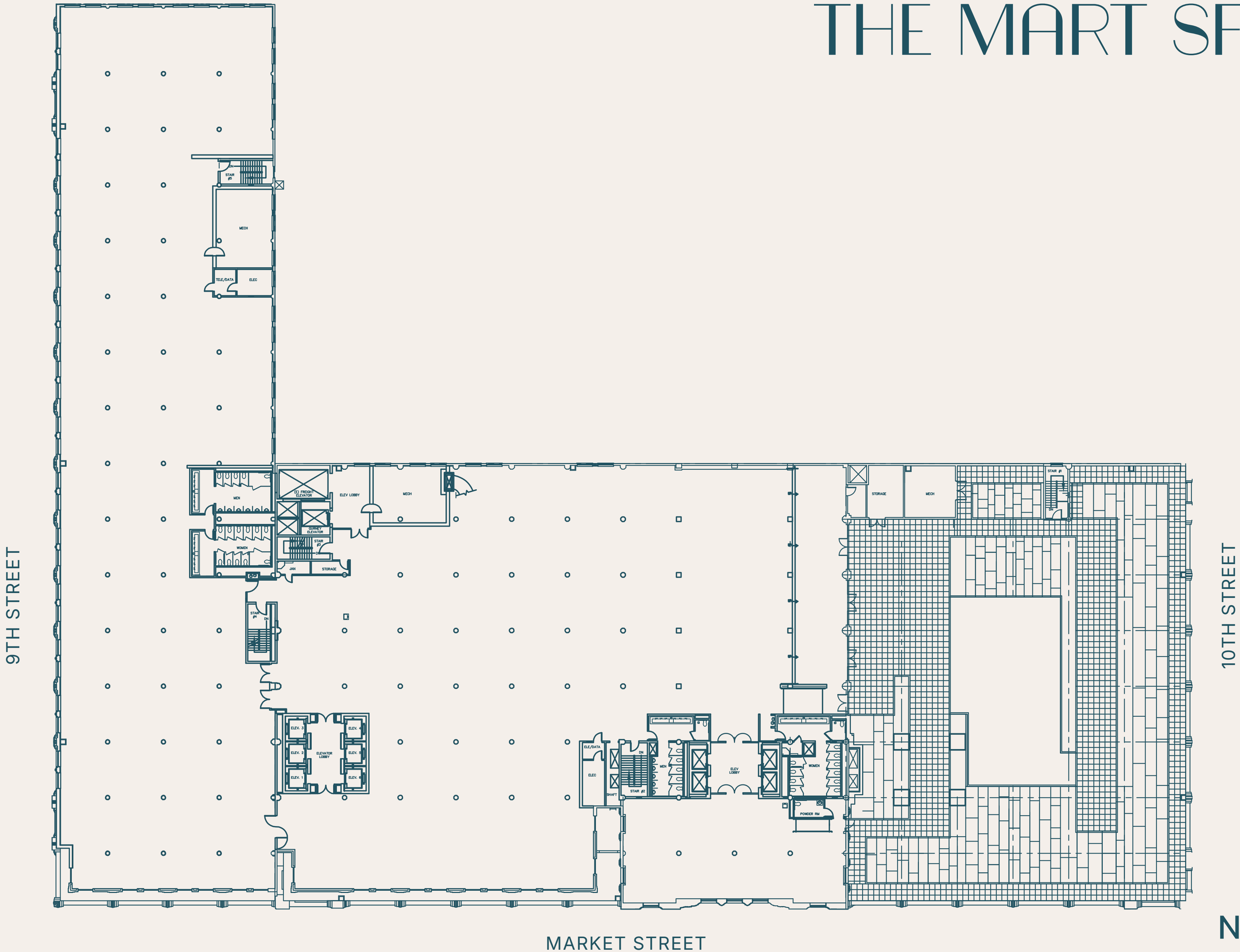


# FLOOR 9

1355 Market Street

±63,366 RSF

# THE MART SF

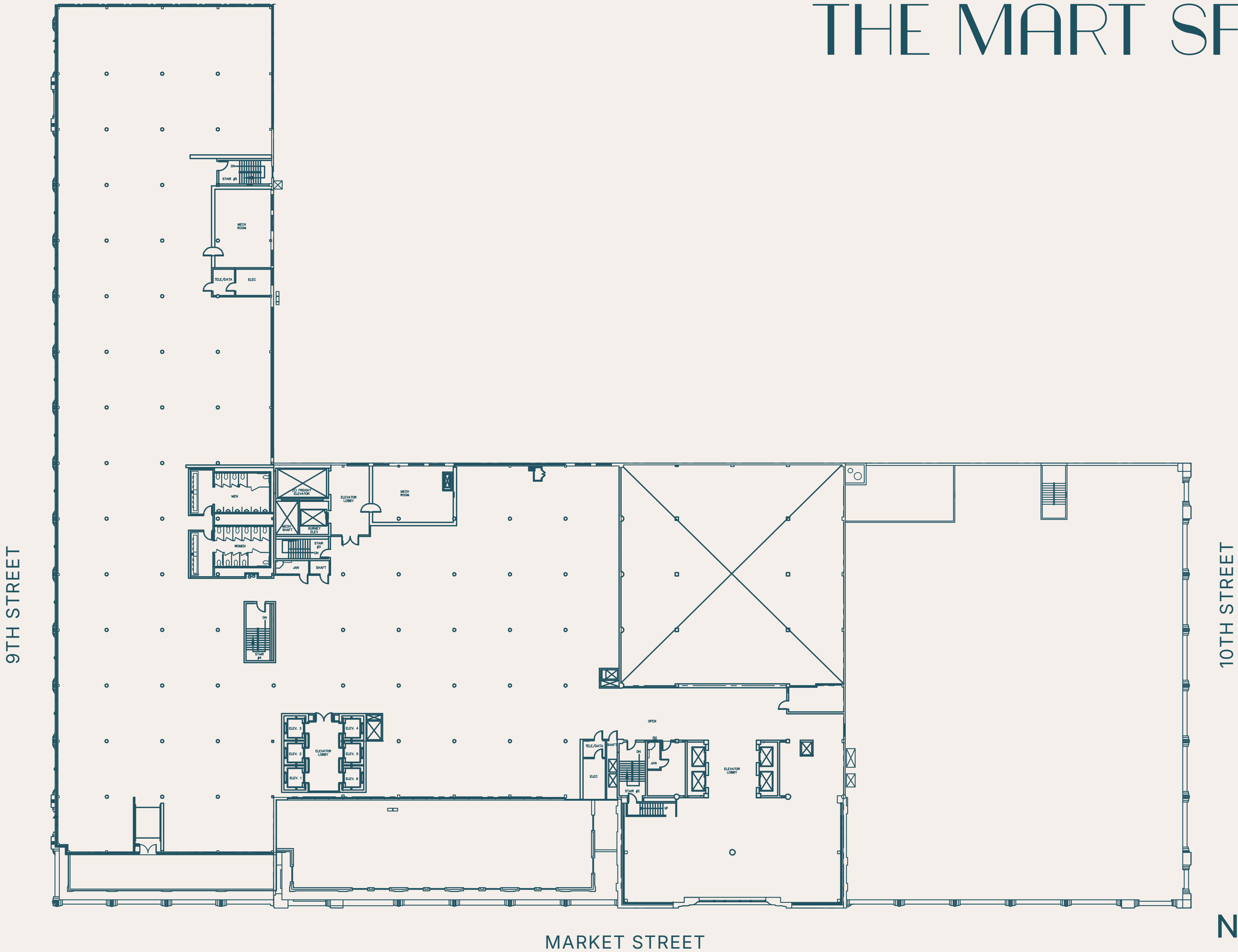


# FLOOR 10

1355 Market Street

±44,954 RSF

# THE MART SF



# 1355 Market Street

**±40,305 RSF**

# THE MART SF





THE MART SF

313,063 SF  
CREATIVE  
HEADQUARTERS

[THEMARTSF.COM](http://THEMARTSF.COM)

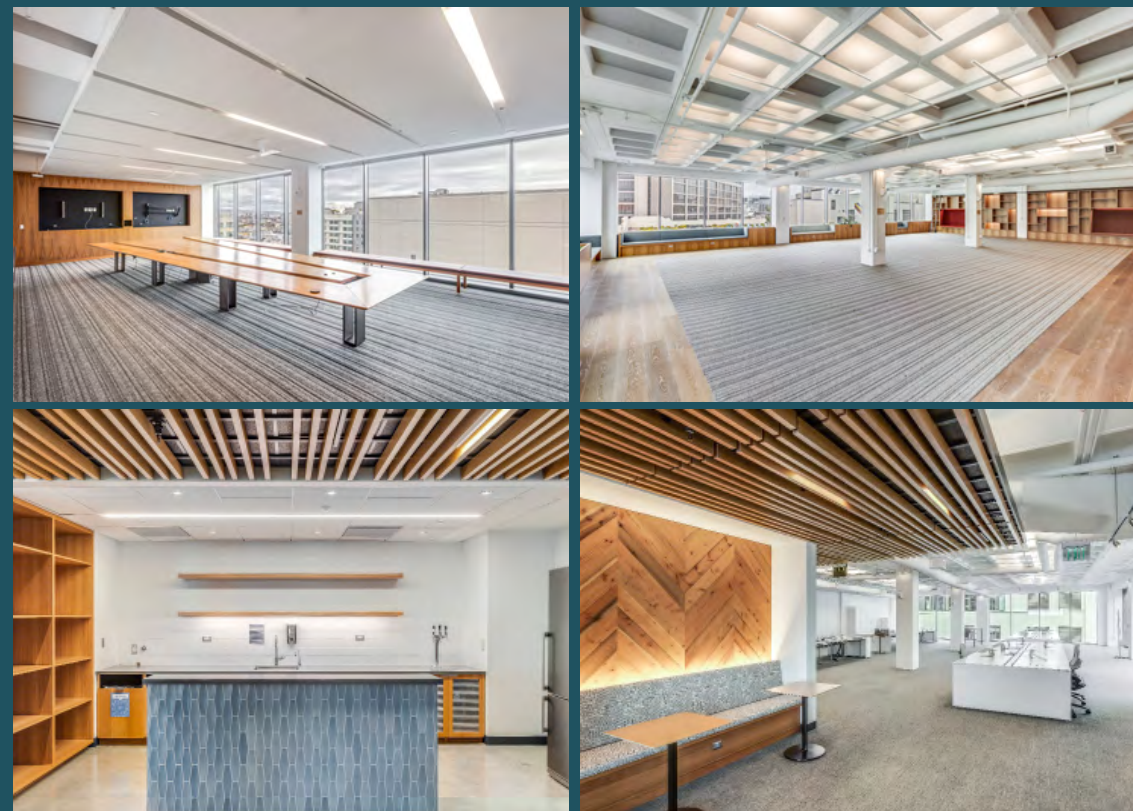
**CBRE**

# FLOOR 10

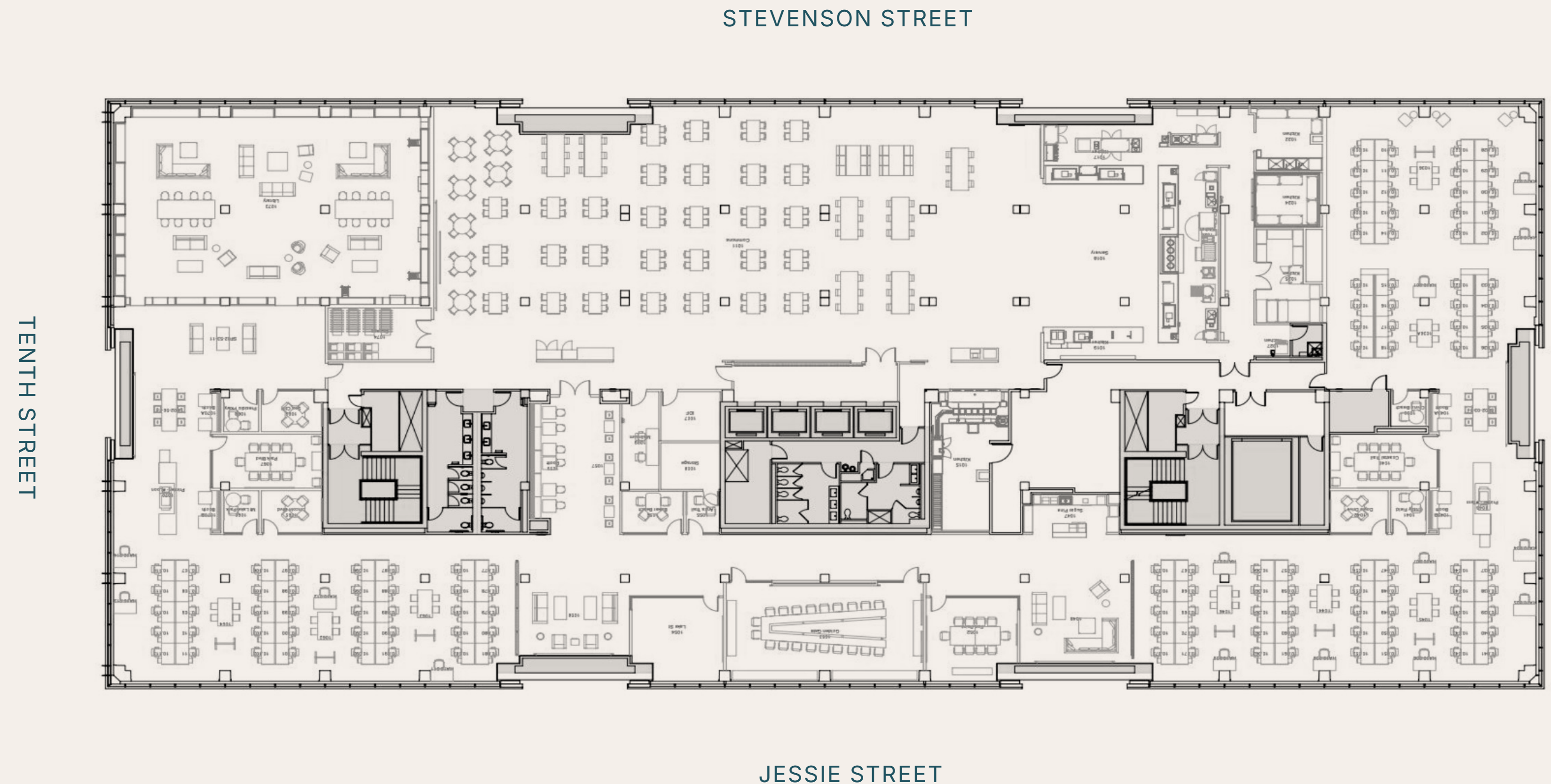
One Tenth Street

±34,950 RSF

- ◇ 11 Conference Rooms
- ◇ Potential for 98 Workstations
- ◇ Kitchen
- ◇ Executive Boardroom



THE MART SF



# FLOOR 9

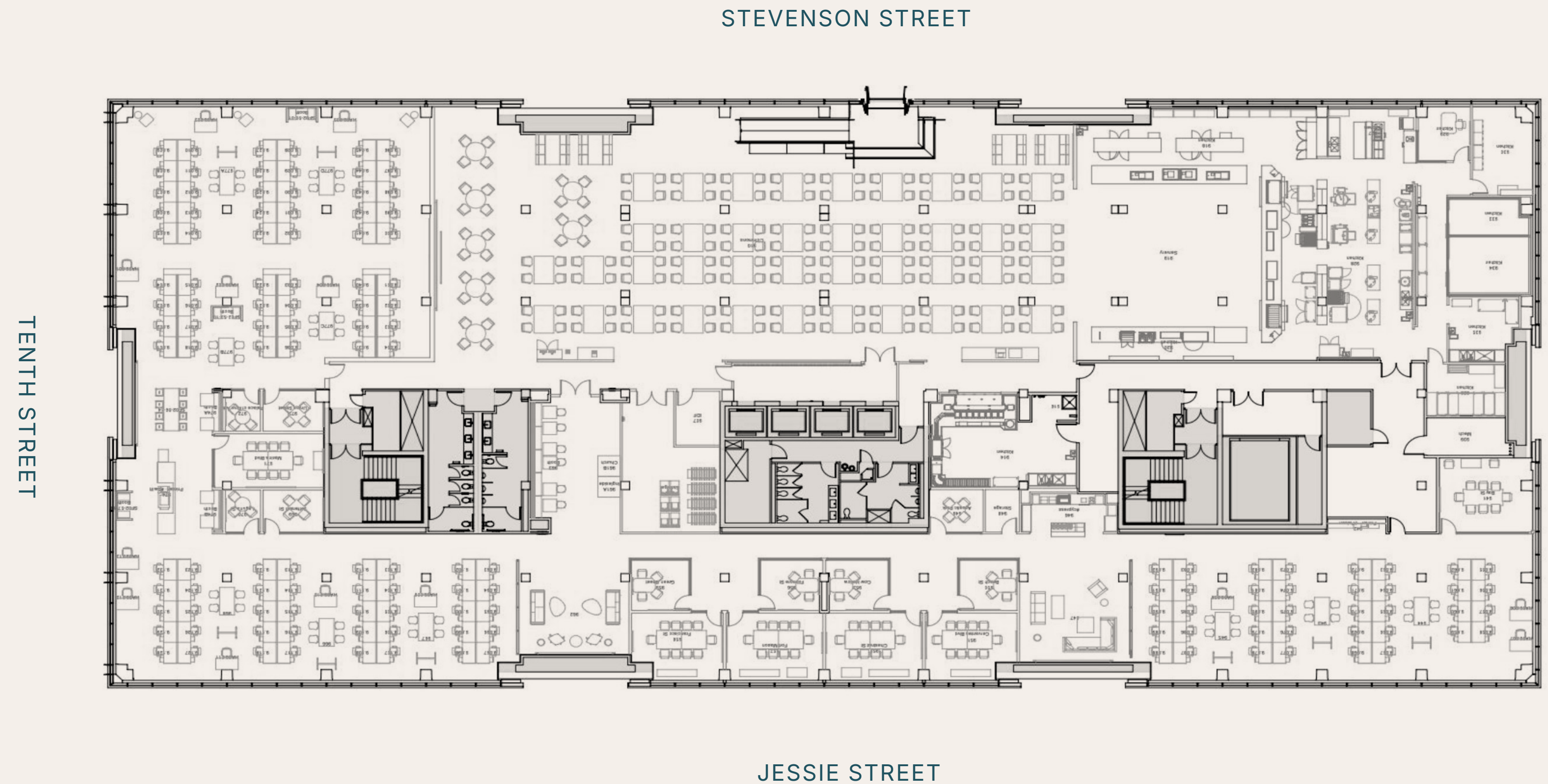
One Tenth Street

±34,807 RSF

- ◇ 15 Conference Rooms
- ◇ Potential for 136 Workstations
- ◇ Kitchen



# THE MART SF

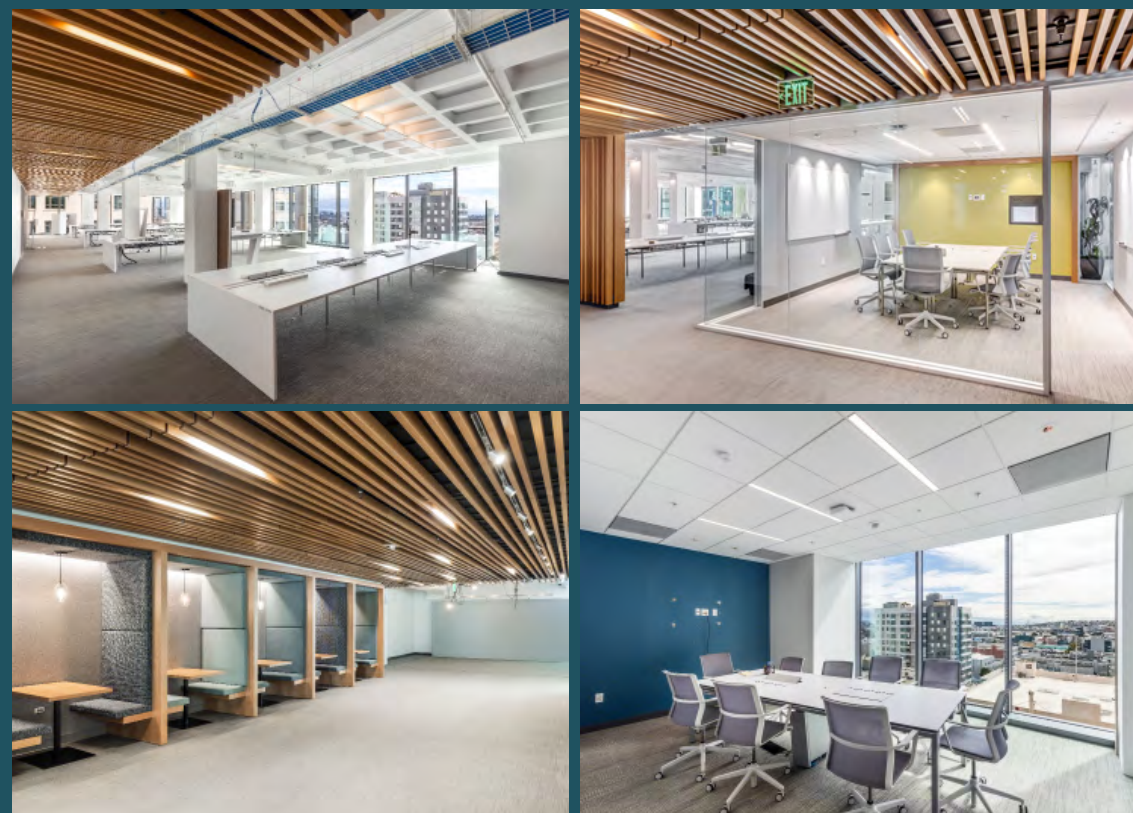


# FLOOR 8

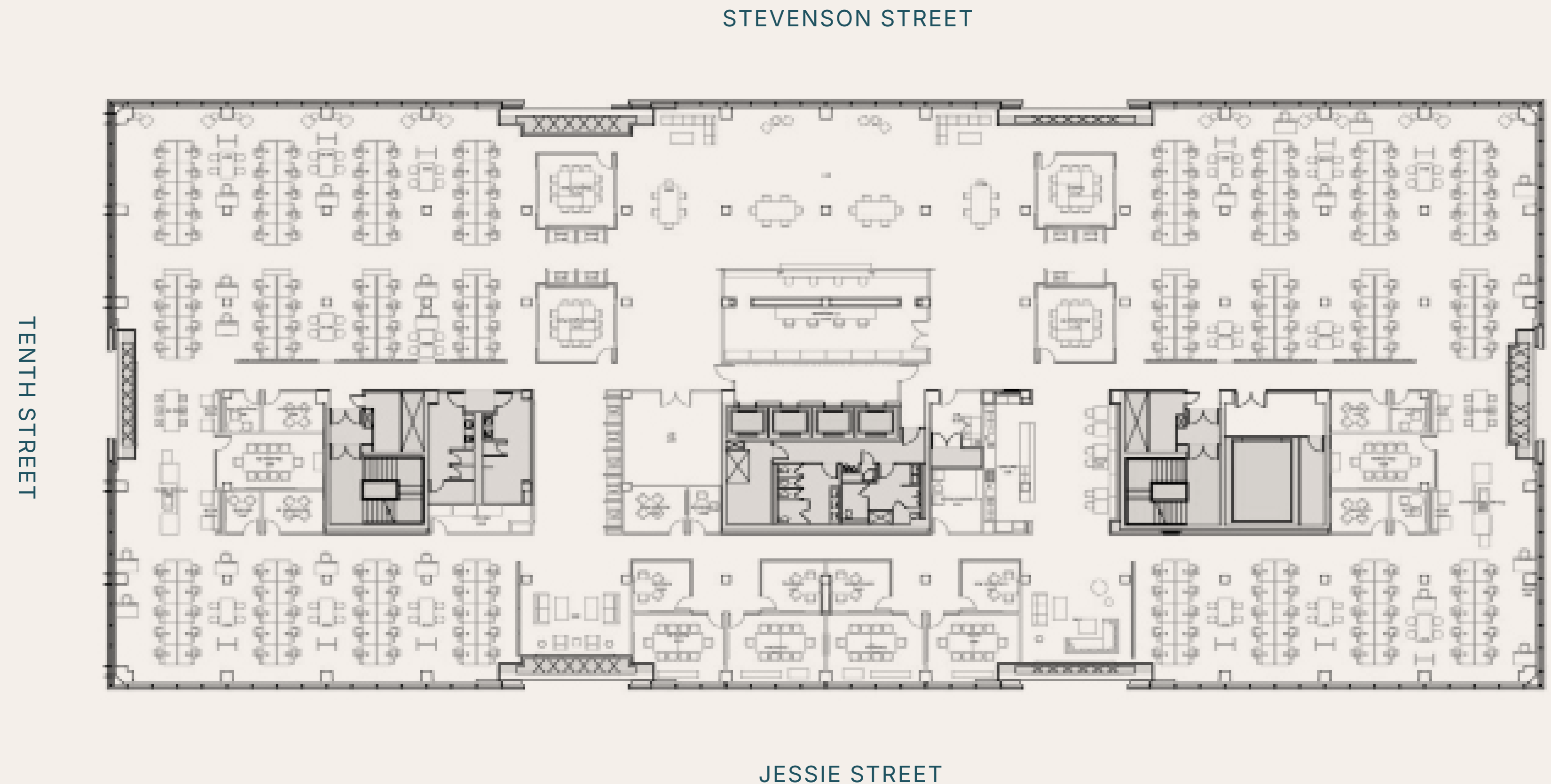
One Tenth Street

±34,950 RSF

- ◇ 24 Conference Rooms
- ◇ Potential for 224 Workstations
- ◇ Kitchen



## THE MART SF

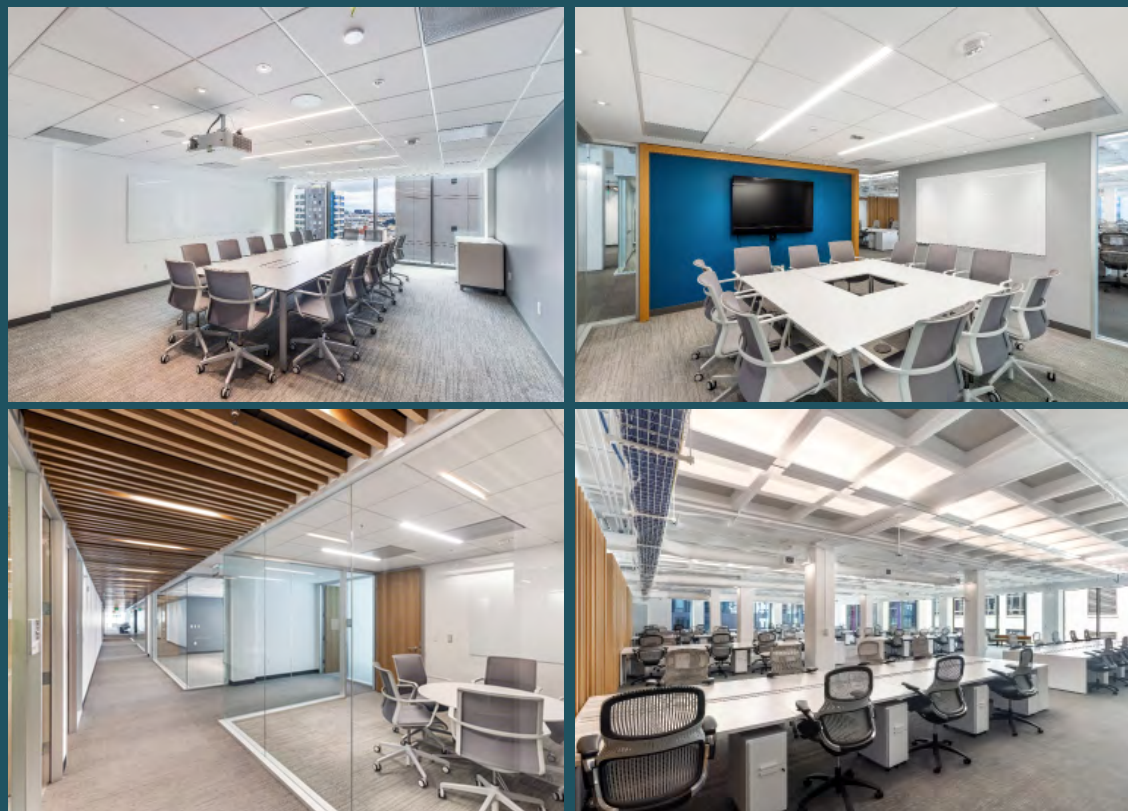


# FLOOR 7

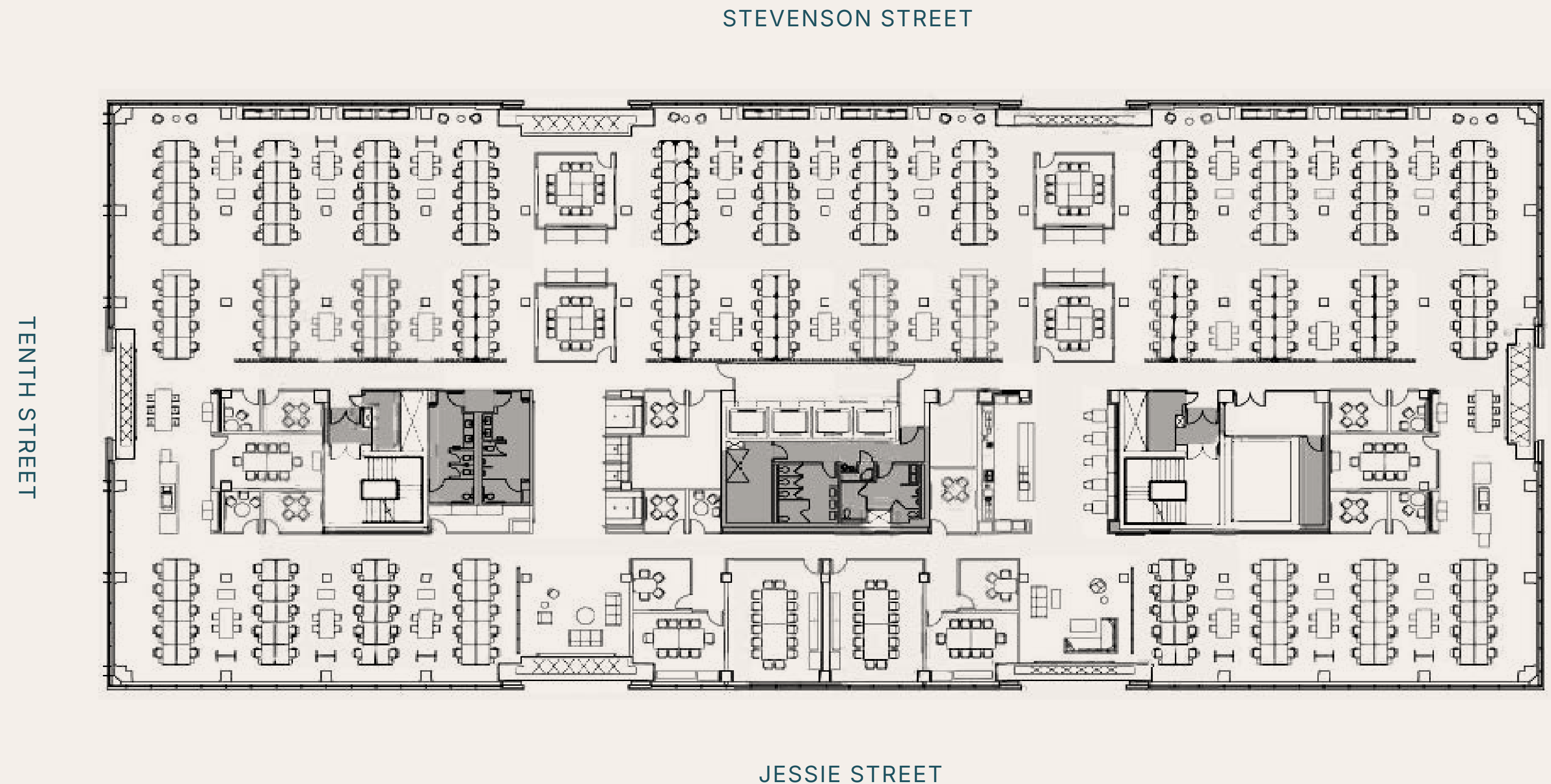
One Tenth Street

±34,950 RSF

- ◇ 24 Conference Rooms
- ◇ Potential for 296 Workstations
- ◇ Kitchen



## THE MART SF

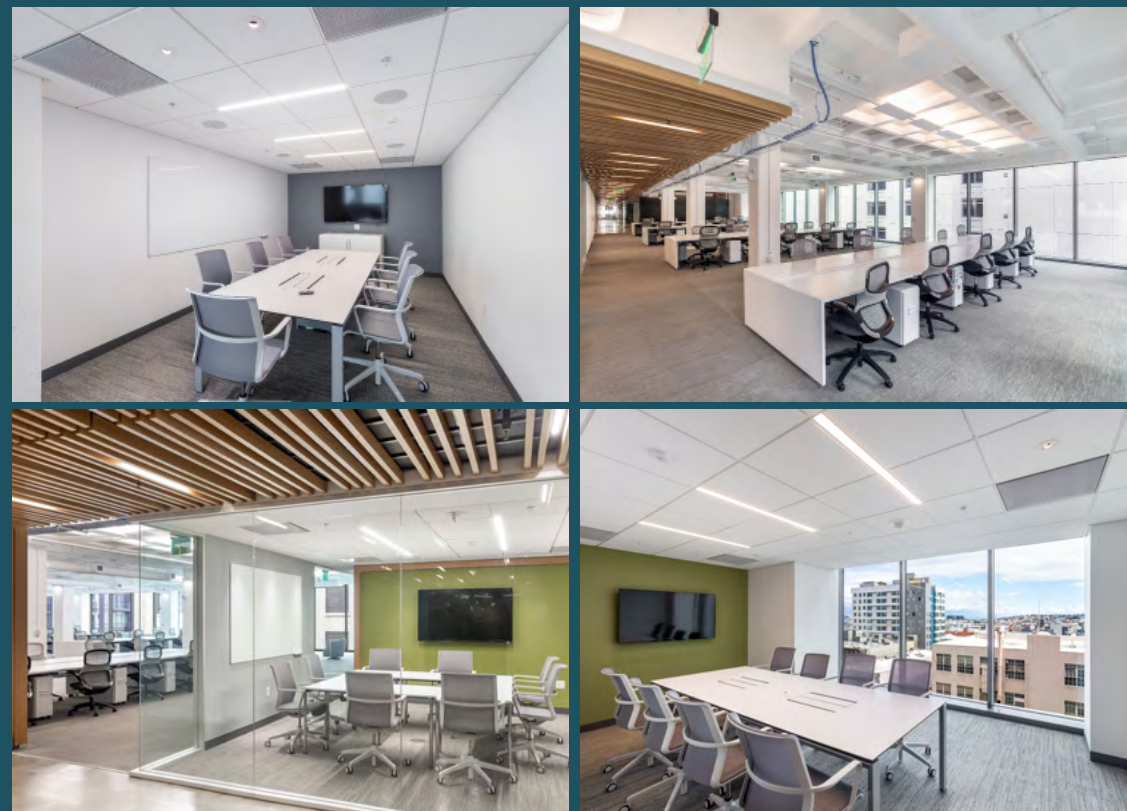


# FLOOR 6

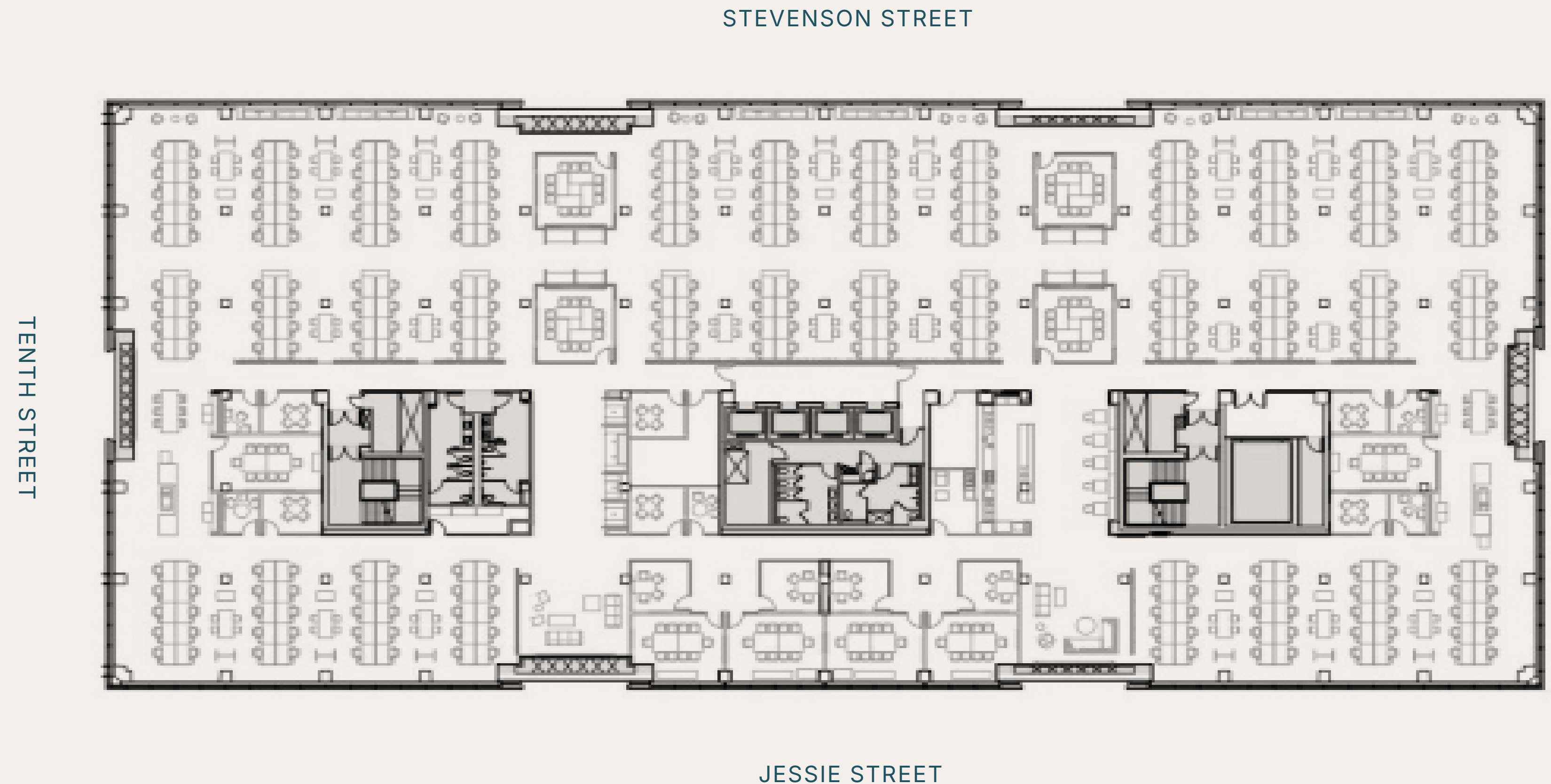
One Tenth Street

±34,950 RSF

- ◇ 25 Conference Rooms
- ◇ Potential for 286 Workstations
- ◇ Kitchen



## THE MART SF

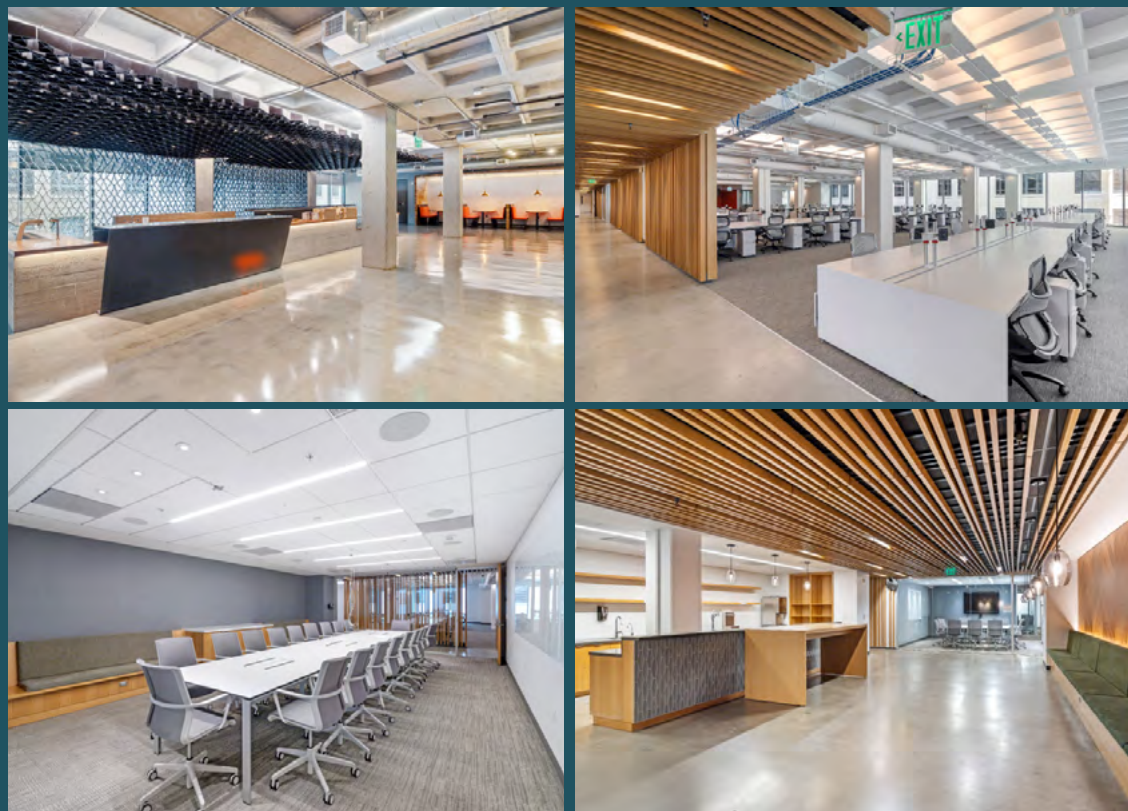


# FLOOR 5

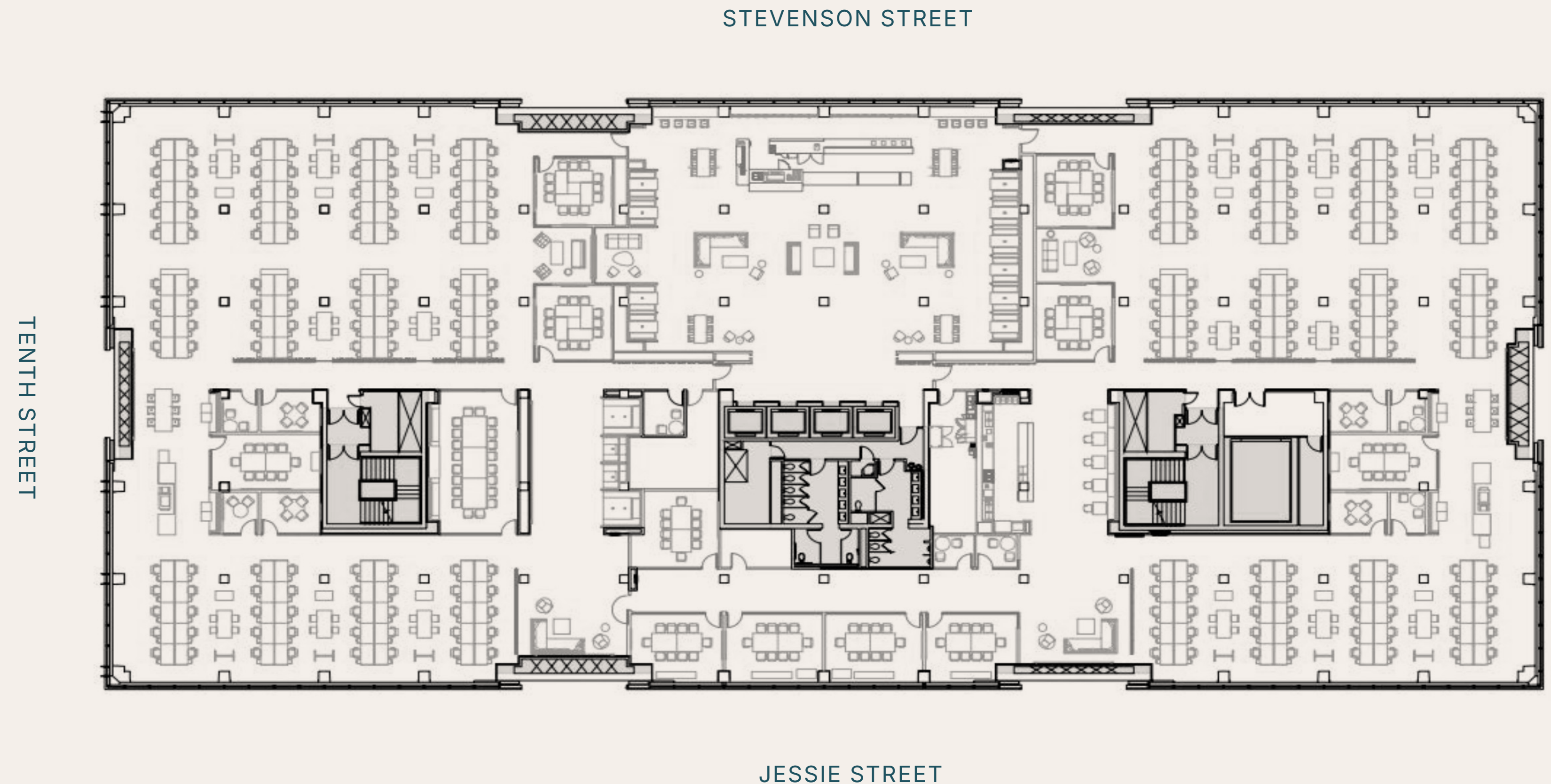
One Tenth Street

±34,950 RSF

- ◇ 23 Conference Rooms
- ◇ Potential for 256 Workstations
- ◇ Large Kitchen/Communal Area with Coffee Bar



## THE MART SF



# FLOOR 4

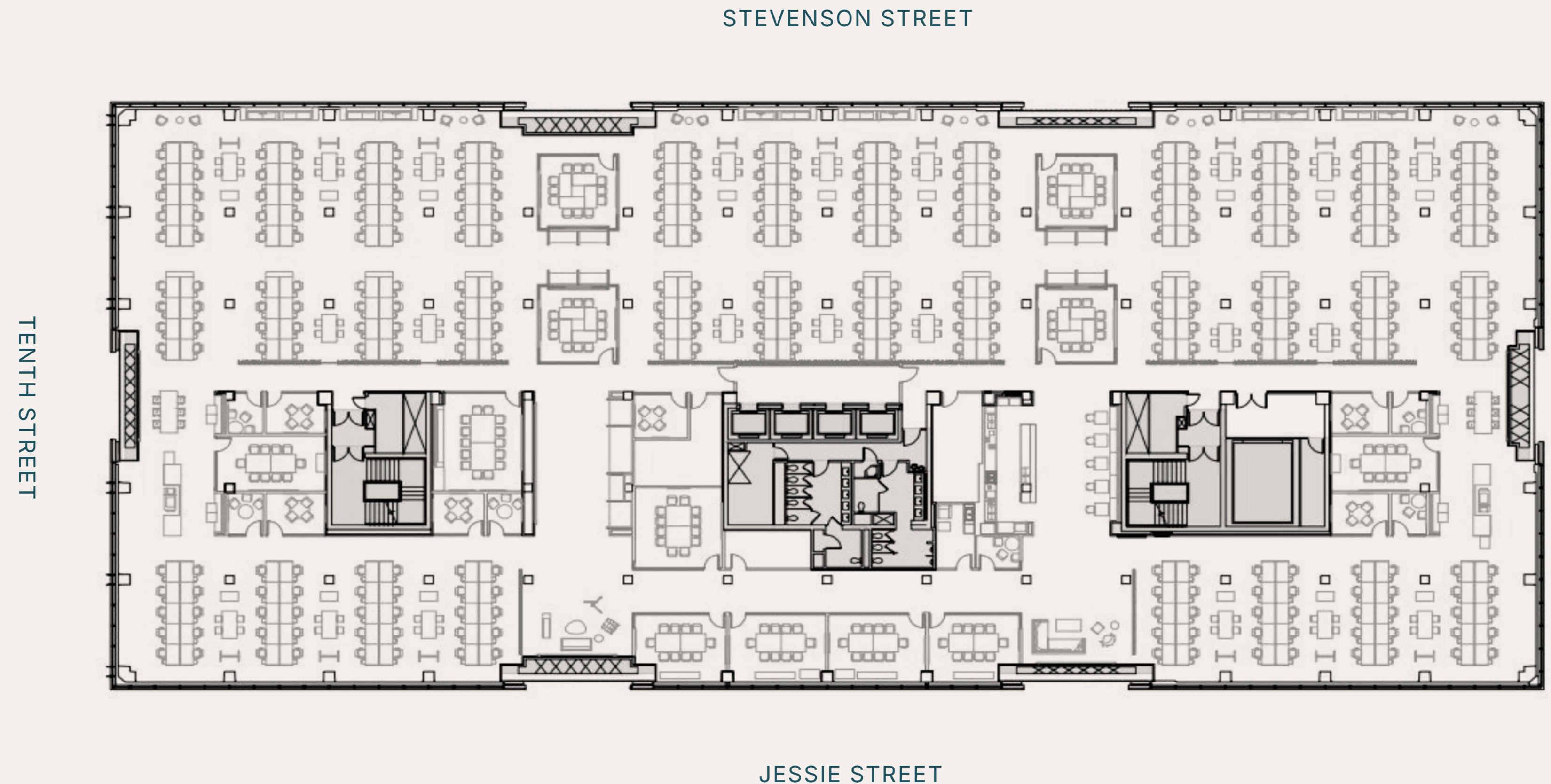
One Tenth Street

±34,950 RSF

- ◇ 24 Conference Rooms
- ◇ Potential for 296 Workstations
- ◇ Kitchen



## THE MART SF



# FLOOR 3

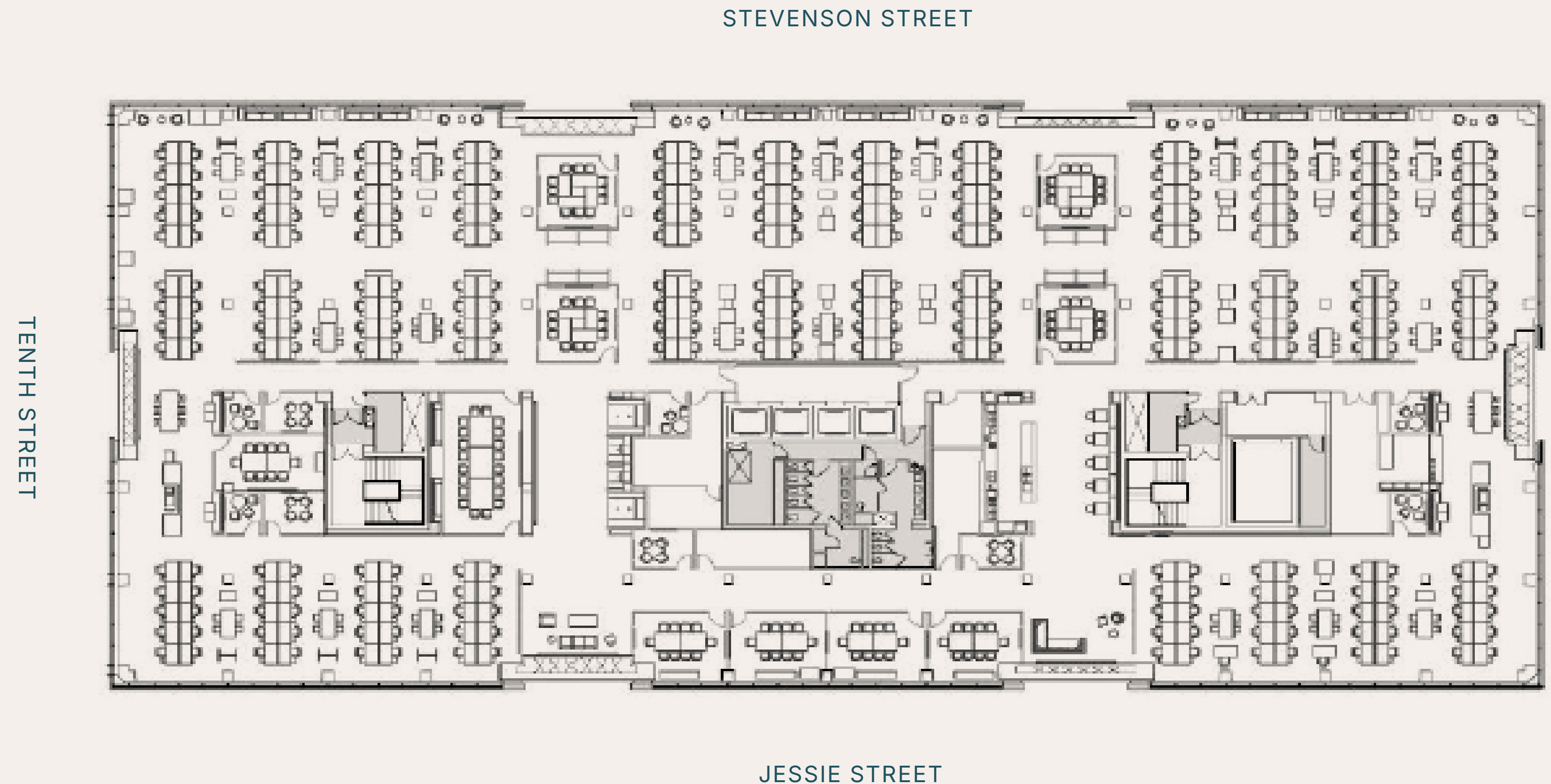
One Tenth Street

±34,950 RSF

- ◇ 18 Conference Rooms
- ◇ Potential for 296 Workstations
- ◇ Kitchen



## THE MART SF

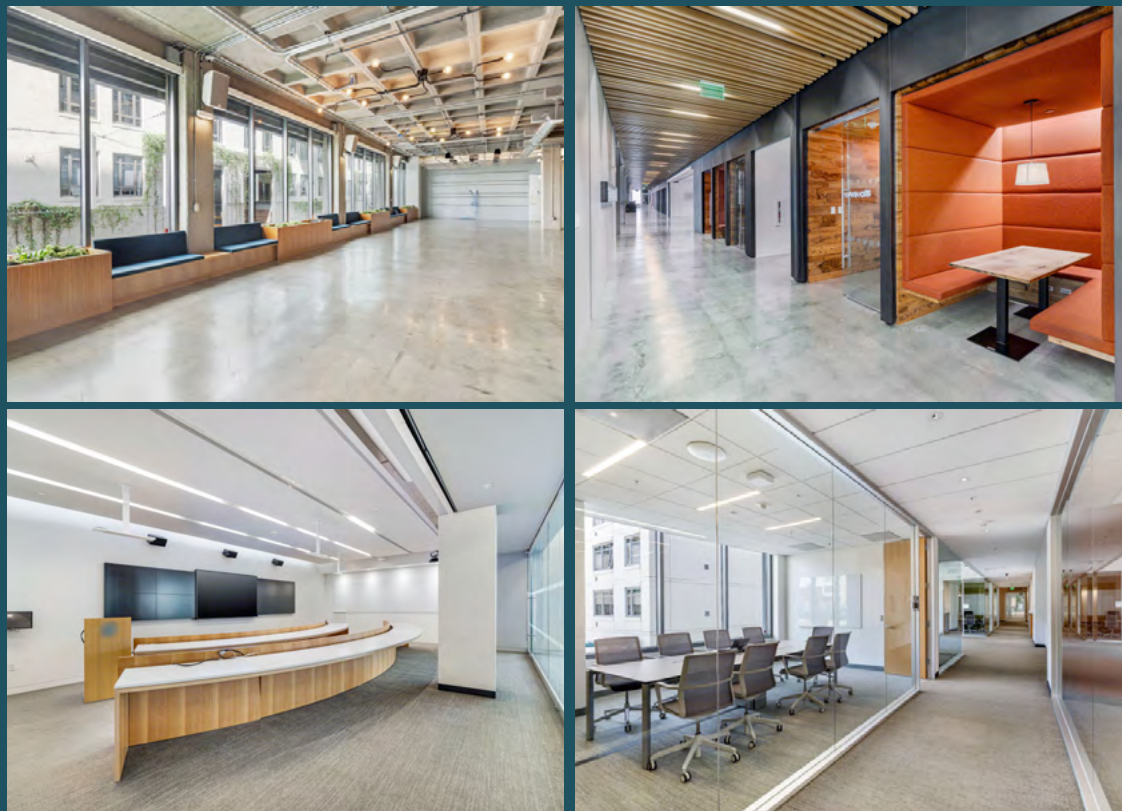


# FLOOR 2

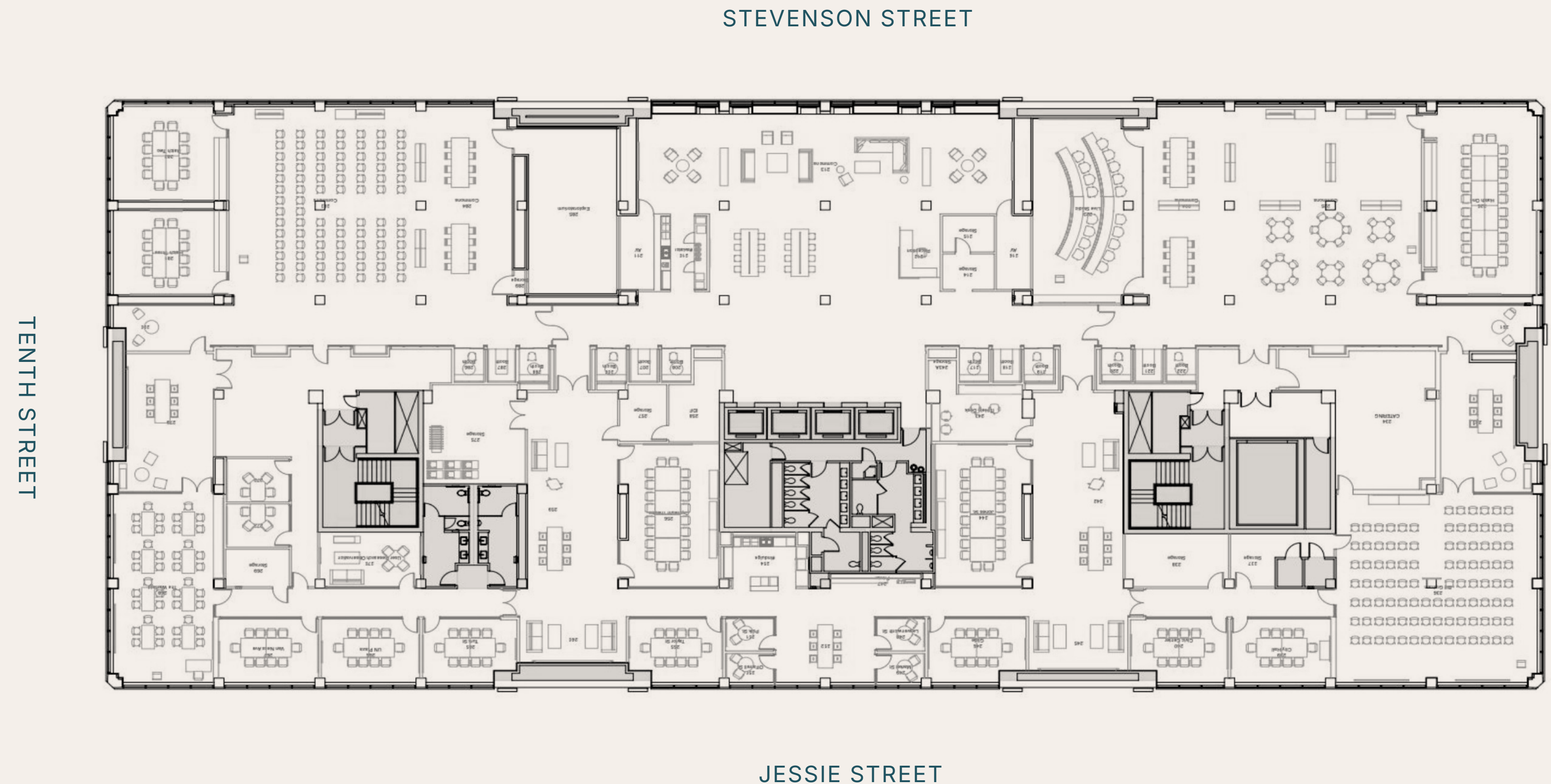
One Tenth Street

±33,606 RSF

- ◆ **Conferencing Floor**
- ◆ 12 Conference Rooms
- ◆ 3 Large Boardrooms
- ◆ 2 Large Auditorium Style Seatings
- ◆ 16 Phone Rooms
- ◆ Kitchen



# THE MART SF



LEARN MORE AT [THEMARTSF.COM](http://THEMARTSF.COM)

## CONTACT

**Conor Famulener**

Executive Vice President

Lic. 01438818

C +1 510 847 0659

[conor.fam@cbre.com](mailto:conor.fam@cbre.com)

**Luke Ogelsby**

Vice Chairman

Lic. 01422599

C +1 415 271 5737

[luke.ogelsby@cbre.com](mailto:luke.ogelsby@cbre.com)

**Madison Dutra Sarro**

First Vice President

Lic. 02041936

C +1 619 993 2520

[madison.dutra@cbre.com](mailto:madison.dutra@cbre.com)

**CBRE**