



MARSHALL JAKEMAN  
MARINE LIMITED

✉ [chris@mjmuk.com](mailto:chris@mjmuk.com)  
☎ +44(0)7734 230496  
🌐 [www.mjmuk.com](http://www.mjmuk.com)

# MJM Enterprise

26.7m Multipurpose DP0 Survey Vessel

Designed and built in the UK, the MJM Enterprise is a versatile 26.7m vessel capable of various operations including Survey, ROV and Environmental campaigns.



## General Vessel Information

The MJM Enterprise benefits from various features, including DP0 capability, a large working deck area with space for 2 x 20ft containers, various sensor mounting options, a 1.2m moonpool for through-hull sensor deployment, and comfortable workstation areas. A passive, anti-roll tank enhances the seakeeping capability, extending available weather windows.

A highlight of the vessel is its robust 6T SWL A-Frame with 4.5t integrated winch. The A-Frame offers a height of 6.5m and flanges on both the outboard and inboard sides, expanding the towing width. With additional booms up top, and coupled with a crane rated to 38T/M, it's perfect for survey, ROV, shallow geotechnical and environmental operations.

The vessel offers a range of benefits more commonly seen on larger vessels, with 20 berths (12 for charterers), a spacious working galley for 8-10 people and a separate lounge area.

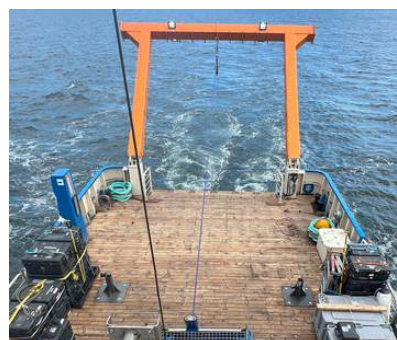
## Vessel Particulars

Classification:	MGN 280 - MCA Category 1 - 150 miles from Safe Haven
Length Overall:	26.70m
Length:	23.96m
Beam:	8.10m
Draught:	2.6m
Air Draught:	15.0m (approx)
Other:	Passive anti-roll tank to enhance seakeeping ability



MARSHALL JAKEMAN  
MARINE LIMITED

✉ chris@mjmuk.com  
☎ +44(0)7734 230496  
🌐 www.mjmuk.com

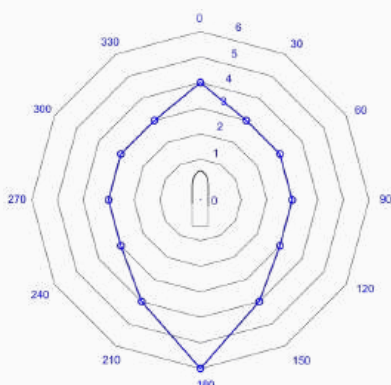


## Engines & Propulsion

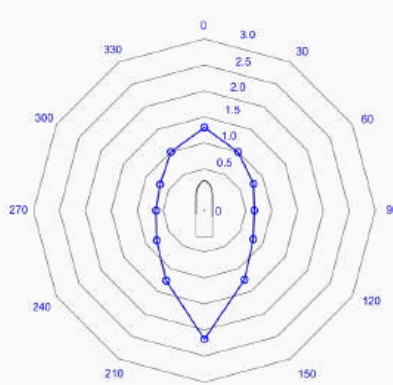
Engines	Twin Doosan 4V158TIH fixed pitch propellers
Bow Thruster	Kort Propulsion KT170 with 700mm prop giving 1360kg of thrust
Stern Azimuth Thruster	Series 2 well-mounted Thruster, 700mm diameter-achieving 5kn utilising the Generator PTO
Generators	1x 125kw Hyd set with Aux 45kva alternator, 1 x 79KVA 1 x 35KVA
Speed	10 knots
Fuel Consumption	100 litres per hour @ 10 knots

## DP Capability

Wind - BF Scale



Tide - Knots



## Tank capacities

MGO	15m <sup>3</sup>
Fresh Water	34m <sup>3</sup>
Black Water	3m <sup>3</sup>
Grey Water	3m <sup>3</sup>

## Fuel Consumption

- Transit (10 knots) – 100L per hour
- Survey (active) – 30L per hour
- Line keeping/anchor – 10L per hour

Get availability updates



## Marshall Jakeman Marine

Graving Dock, Dockside Road,  
Middlesbrough, TS3 8AT

chris@mjmuk.com  
+44(0)7734 230496  
www.mjmuk.com



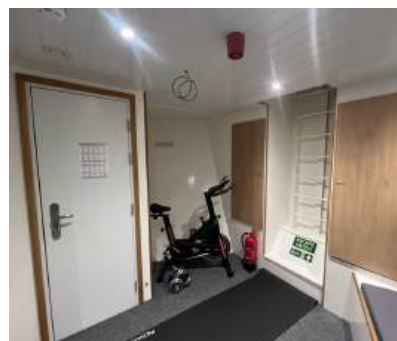


## Accommodation

- Bunks – 20 berths, 12 charterer personnel
- Galley – Spacious working galley with ample capacity for 8-10 dining
- Lounge area

## Working Area

- 75m<sup>2</sup> working deck area
- 6 workstations in wheelhouse
- Dedicated lab/processing room/client office
- Deck store for samples



## Deck

- 1.2m Moonpool: enabling through-hull asset deployment
- Mountings for over side survey pole deployment
- Crane rated to 38T/M allowing for 7.6T @ 4.6m to 2.05T @ 14.15m
- A-Frame 5.2m width x 6.5m height and 6T SWL- 4.5t integrated winch
- 2 x fwd mooring winches with 600m of wire with option for 2 x stern anchor winches
- Cargo load capacity of 30T with fixings/fittings for 2 x 20ft container
- Port and starboard removable gunwales for side deployment of assets with optional A-frame capability
- Push on capability
- Saltwater Washdown Pump



## Navigation

- Hemisphere GNSS V500 SAT Compass
- Furuno Time Zero Nav system with personal Bathymetric generator module
- Icom GM800 MF/HF
- Icom GM600 VHF x2
- GP170 GNSS system
- FA170 AIS
- SIMRAD AP70 Autopilot
- NX700 Navtex system
- T2T12 Secondary Nav system
- DRS25 Radar
- DRS4D Radar
- DFF3D Multi Beam Sonar

## Get availability updates



## Marshall Jakeman Marine

Graving Dock, Dockside Road,  
Middlesbrough, TS3 8AT

[chris@mjmuk.com](mailto:chris@mjmuk.com)  
+44(0)7734 230496  
[www.mjmuk.com](http://www.mjmuk.com)