

# APARTMENT STEFANO

Verbier, Switzerland



## CHALET OVERVIEW

8 guests

3 bedrooms

3 bathrooms

( 2 ensuite bathrooms, 1 separate shower room & WC and 1 separate WC)

Outdoor hot tub

Gas Fireplace

Terrace off living area

Balcony (shared by the 2 main bedrooms)

1 parking space

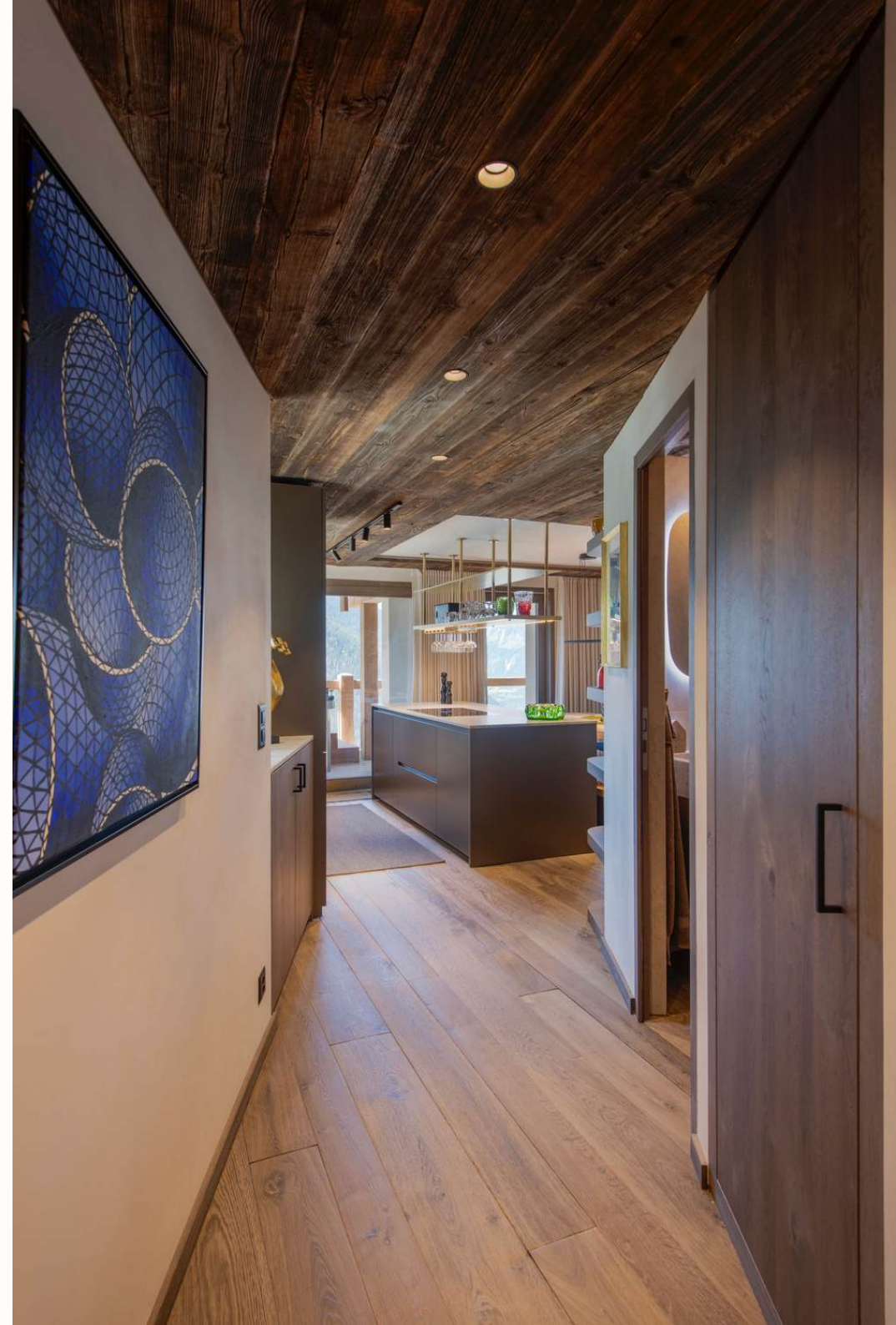
130.32 sqm

---

Verbier centre 5 minute by chauffeur

Ski lift Medran 7 minute by chauffeur

Nursery slopes 4 minute by chauffeur



Newly renovated, this contemporary alpine apartment sits in one of Verbier's most secluded corners. The south-facing position delivers unobstructed mountain and valley views down toward Le Chable, with full sun exposure and a rare sense of privacy. The terrace, accessed directly from the living area, holds a brand-new luxury hot tub and looks straight out across the valley.

The open living area flows naturally between kitchen, dining and lounge, anchored by a gas fireplace and floor-to-ceiling windows that frame the views. The kitchen handles self-catered weeks as easily as it supports a private chef, fitted with Siemens appliances, induction hob and Nespresso machine. A Marshall sound system carries through the space without dominating it.

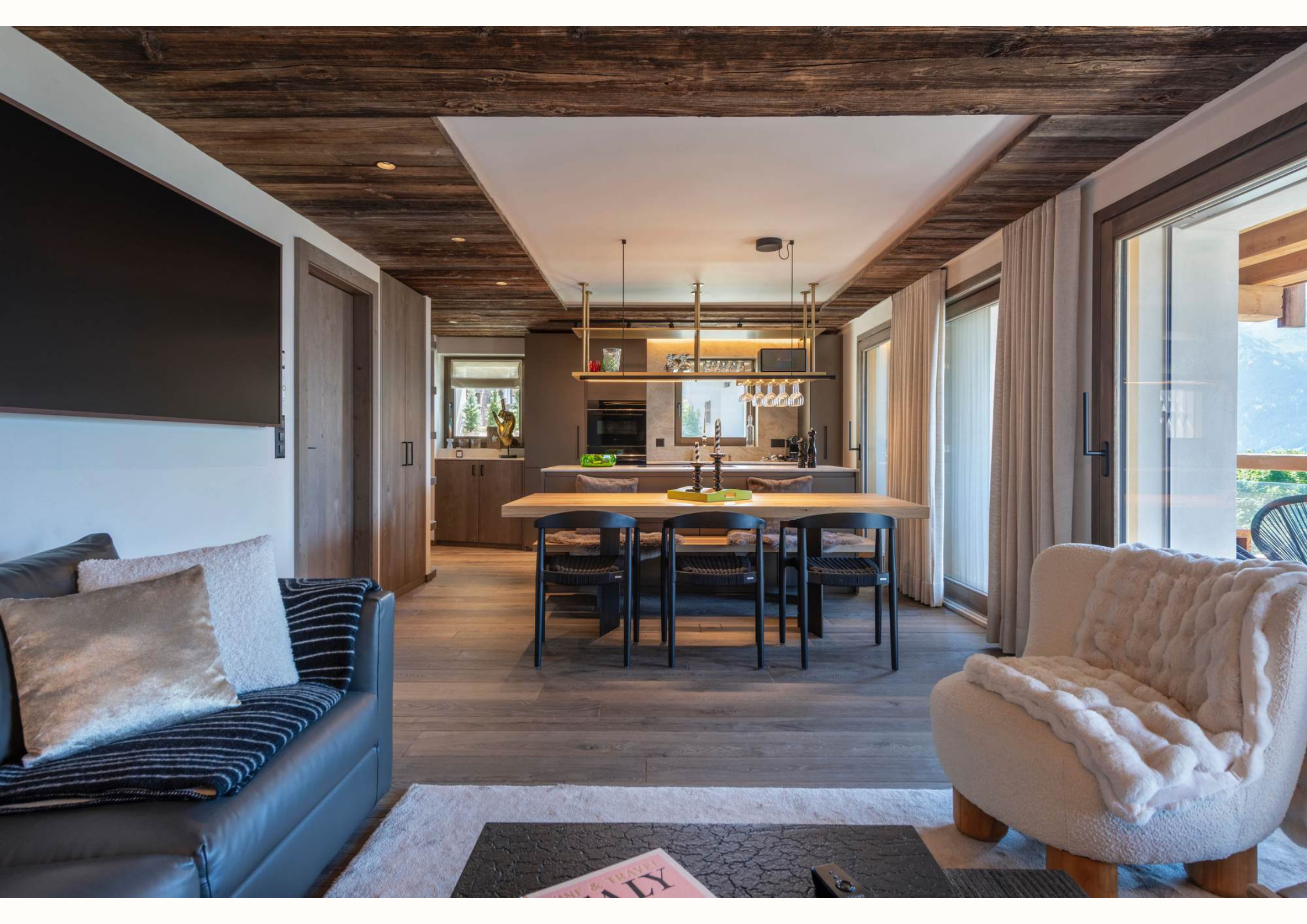
The apartment sleeps eight across three bedrooms. Two doubles (one a master suite with ensuite and balcony, the other with its own balcony and a bathroom across the hall) offer flexible sleeping for adults or older children. The bunk room, tucked just off the living area, sleeps four across two sets of bunk beds (4 singles) and includes a desk and ensuite shower, with use of a separate wc off the hallway, making it genuinely functional rather than a token kids' space.

**LIVINGROOM**





**DINING ROOM**



**KITCHEN**

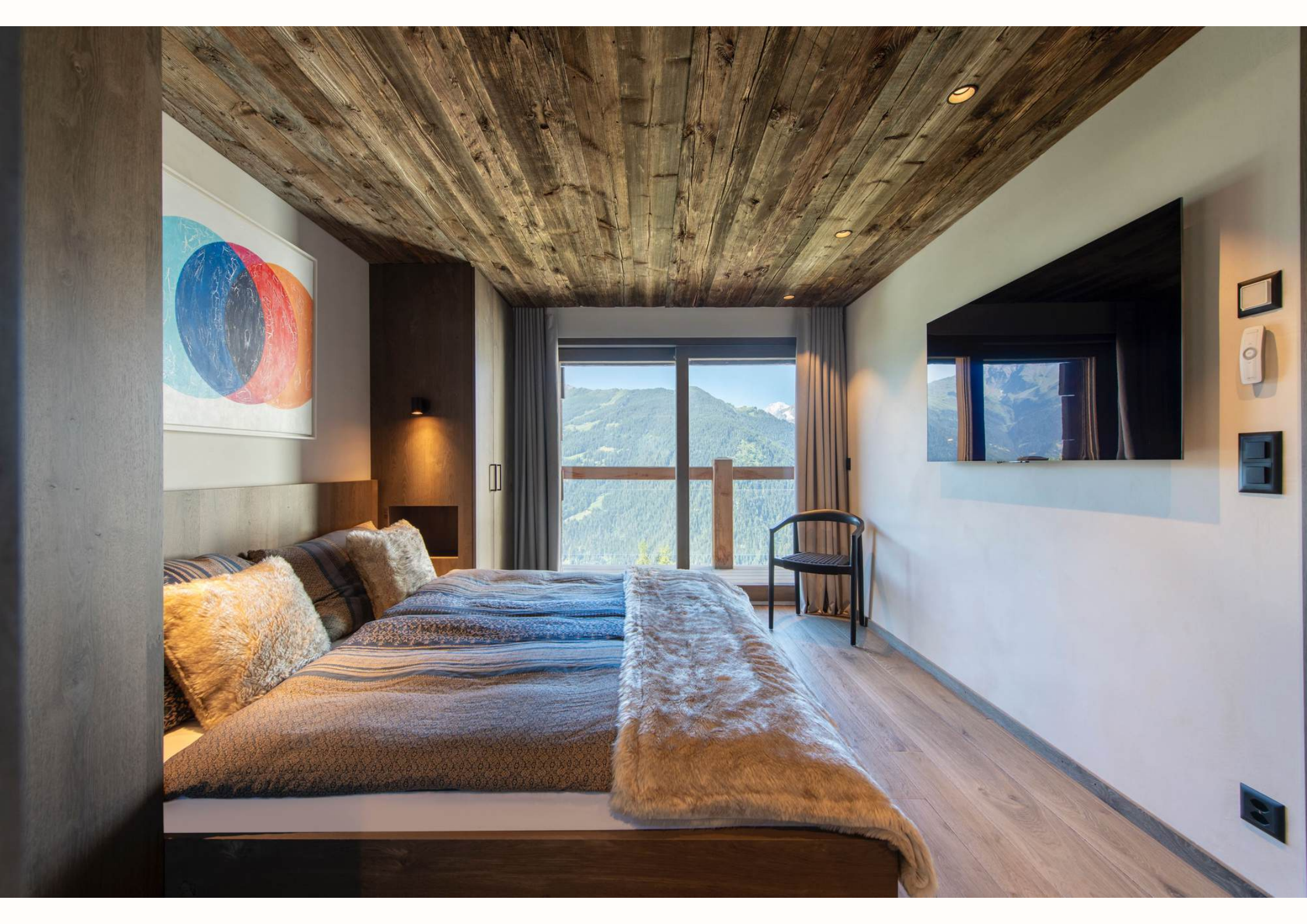




**HALLWAY**



**GUEST ROOM 01**





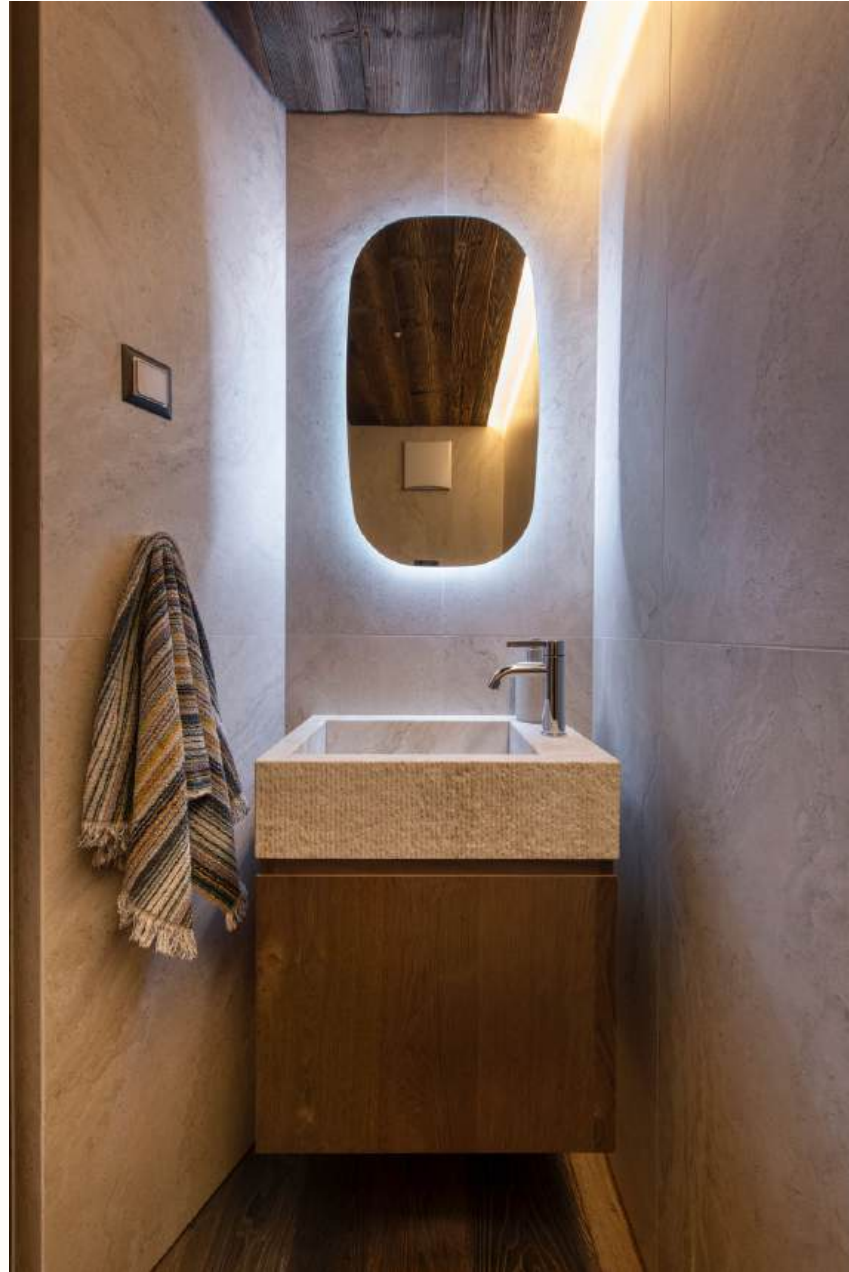
**ENSUITE 01**



**GUEST ROOM 02**



**SEPERATE SHOWER ROOM/ WC**



**Bunk room**



**Bunk room shower and sink**

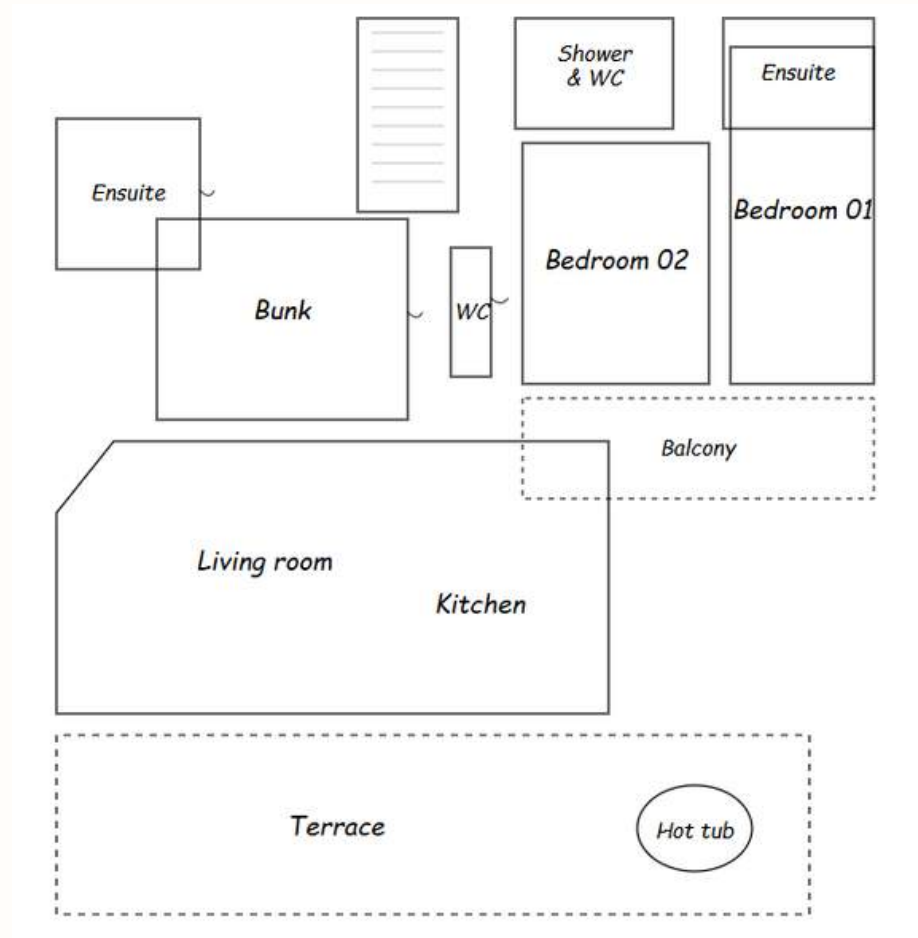


**OUTDOOR AND  
WELLNESS**





# APARTMENT FLOOR PLAN



Living room: 48.74m<sup>2</sup>

Bunk room: 13.67m<sup>2</sup>

Bedroom 1: 12.12m<sup>2</sup>

Bedroom 2: 8.07m<sup>2</sup>

Total size: 130.32m<sup>2</sup>

## **GUEST ROOM CONFIGURATIONS**

### **MASTER GUEST ROOM 01**

DOUBLE BED  
ENSUITE WITH WC  
SHOWER  
DOUBLE SINKS  
BALCONY

### **GUEST ROOM 02**

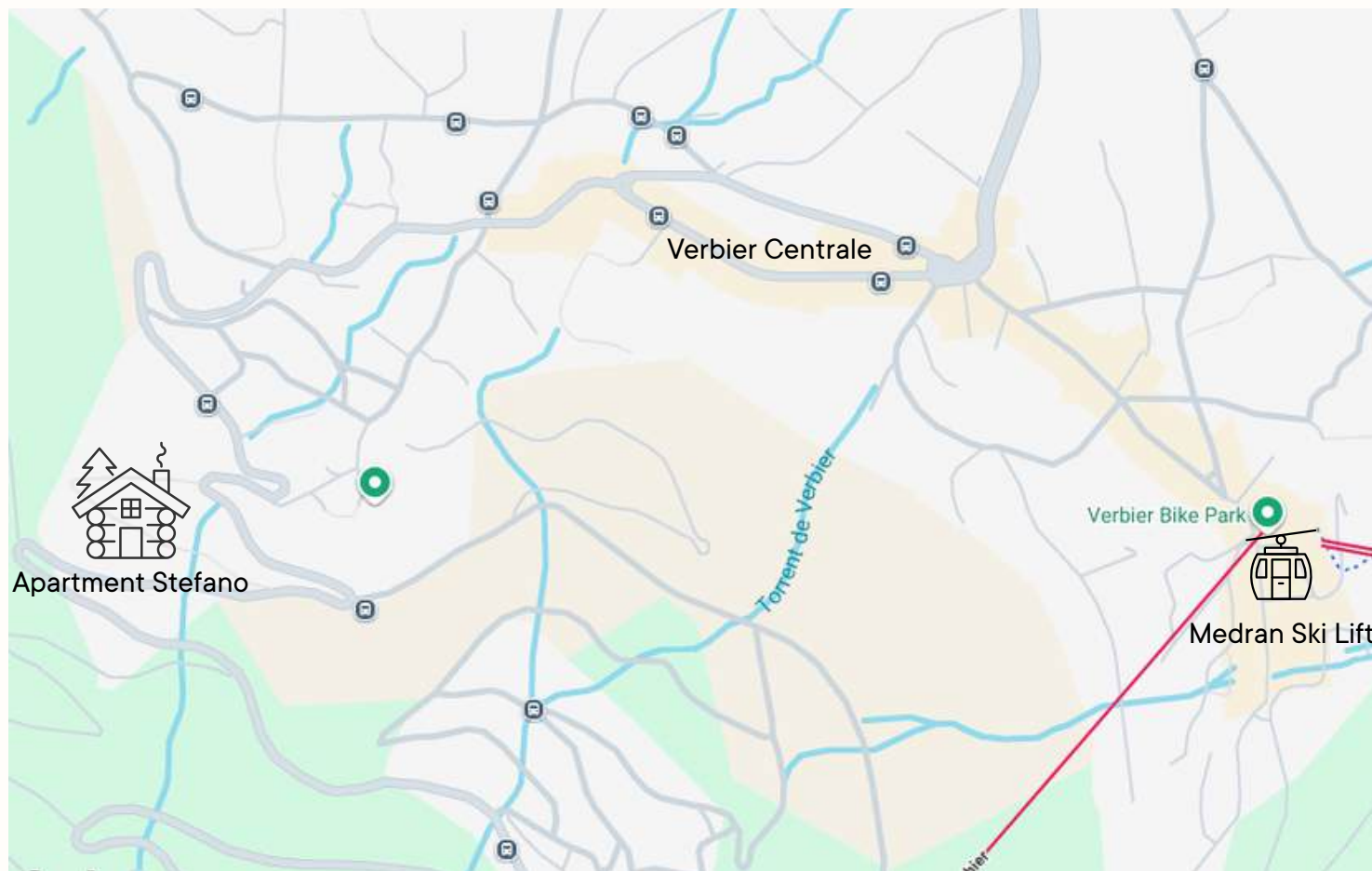
DOUBLE  
BALCONY  
SHARED BATHROOM WITH WC ACROSS  
HALL

### **GUEST ROOM 03 BUNK ROOM**

SHOWER AND SINK ENSUITE (SEPERATE WC OFF HALLWAY)  
2 BUNK SET UPS (4 SINGLES)

## APARTMENT LOCATION

Apartment Stefano  
Val de Bagnes, Switzerland



Verbier centre 5 minute by chauffeur  
Ski lift Medran 7 minute by chauffeur  
Nursery slopes 4 minute by chauffeur

---

GOOGLE COORDINATES

46°05'36.6"N 7°13'01.0"E