

CHALET HIMALAYA

MERIBEL, FRANCE



CHALET OVERVIEW

15 GUESTS
6 GUEST ROOMS
1 BUNK ROOM (4)
7 EN-SUITES
2 WC

720 SQM
ELEVATOR

POOL
OUTDOOR JACUZZI

GYM
MASSAGE ROOM
CINEMA

WINE CELLAR
PRIVATE CHEF KITCHEN

SKI AND BOOT ROOM
4 INDOOR PARKING
6 OUTDOOR PARKING



THE CHALET

Arranged over approximately 720 sqm and four floors, Chalet Himalaya balances scale with warmth. An internal lift connects each floor, allowing the spaces to flow with ease.

Four master suites, two double bedrooms, one bunk room for four. Every bedroom finished with an en-suite bathroom.

LIVING SPACE

The grand sitting room features double-height ceilings and a central fireplace, with seating arranged for large groups without losing intimacy. The dining room sits between the two lounges, opening onto the terrace for al fresco meals when conditions allow. To the west, a quieter TV room with library and wine cellar offers a more relaxed setting with its own fireplace and valley views.

WELLNESS

A dedicated lower floor given entirely to recovery. The 7x3m indoor swimming pool sits beneath bay windows looking out to the garden, with poolside loungers for slower afternoons. Hammam, steam room, outdoor jacuzzi set into the terrace with open views of the slopes, massage room, fitness space, and cinema room.

SKIING

Ski-in, ski-out from the garden. Guests join the Doron piste directly, skiing down to the main lift hub and ski school at La Chaudanne — and back at the end of the day via the garden or a 50-metre path to the front door. The shops, restaurants, and resort bus stop at Méribel 1600 are a three-minute walk.

LIVING ROOM







ROYAL HOLIDAYS
MONTE-CARLO
ART HOUSE
KOBI KARP



SECOND LOUNGE





DINING ROOM





MASTER GUEST SUITE 01







MASTER GUEST SUITE 02







MASTER GUEST SUITE 03





MASTER GUEST SUITE 04







KIDS DEN







DOUBLE GUEST ROOM 01



DOUBLE GUEST ROOM 01



CINEMA





SPA AND WELLNESS









MASSAGE ROOM



WINE CELLAR



SKI LOUNGE



TERRACE









CHALET EXTERIOR







KITCHEN





GUEST ROOM CONFIGURATION

Master Guest Suite 01

King bed, Dressing room, Ensuite bath and shower

Master Guest Suite 02

King bed, Dressing room, Ensuite bath and shower

Master Guest Suite 03

King bed, Ensuite bath and shower

Master Guest Suite 04

King bed, Ensuite bath and shower, private balcony

Kids Den (Guest Room 01)

4 bunk beds (suited to children)

Ensuite x2 shower (option to add 2 additional beds)

Double Guest Room 02

Master suite double bed with ensuite shower

Double Guest Room 03

Master suite double bed with ensuite shower



FLOORPLANS

GROUND FLOOR

ENTRANCE
BAR SPACE

MAIN LIVING ROOM
FIREPLACE
LOUNGE SPACE

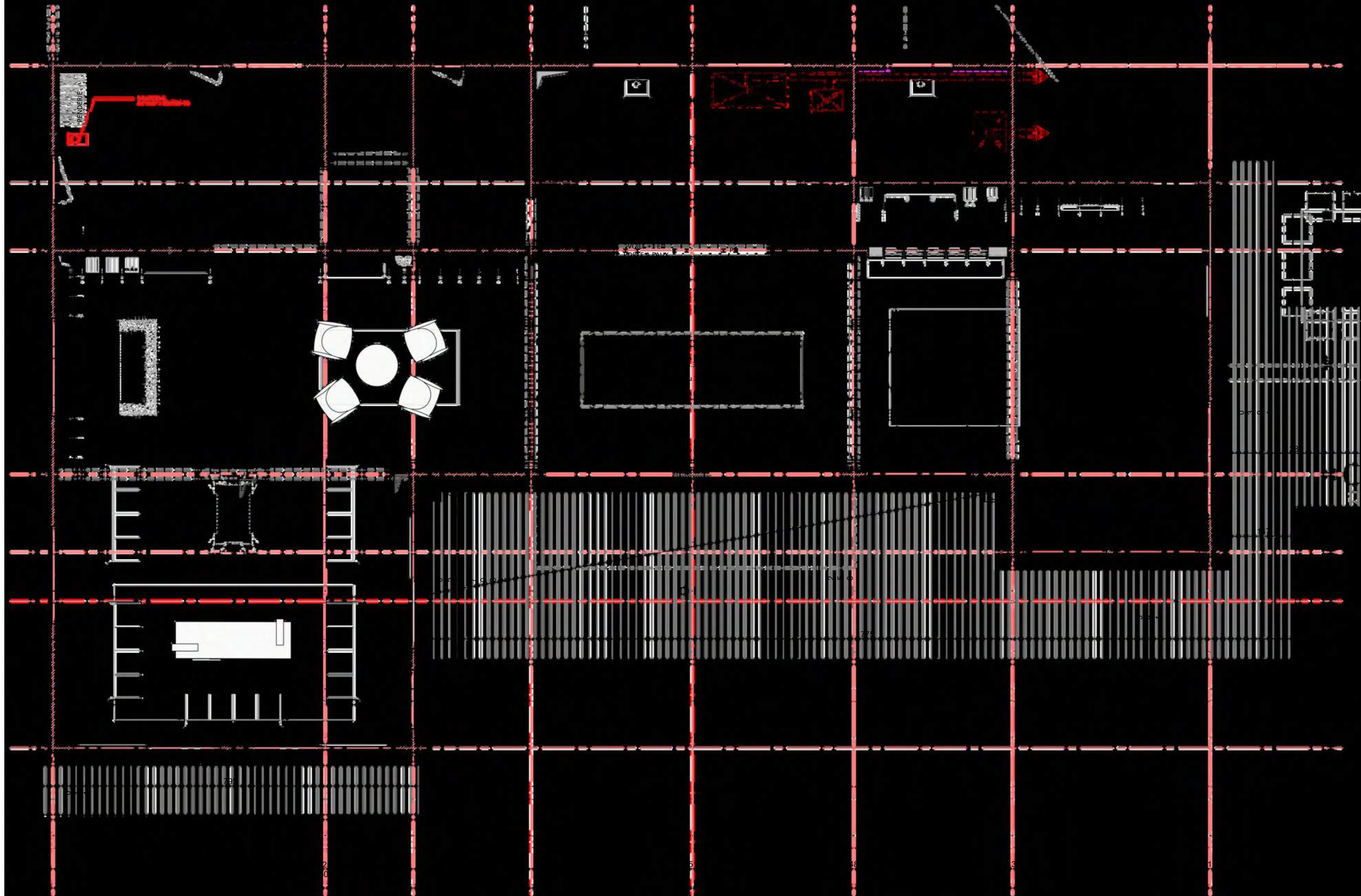
DINING SPACE
KITCHEN
PREP KITCHEN
WINE CELLAR

SECOND LIVING ROOM
SECOND FIREPLACE
GRAND PIANO

LARGE TERRACE

WARDROBE
WC
ELEVATOR

STAIRWAY ACCES FROM
LOWER FLOOR



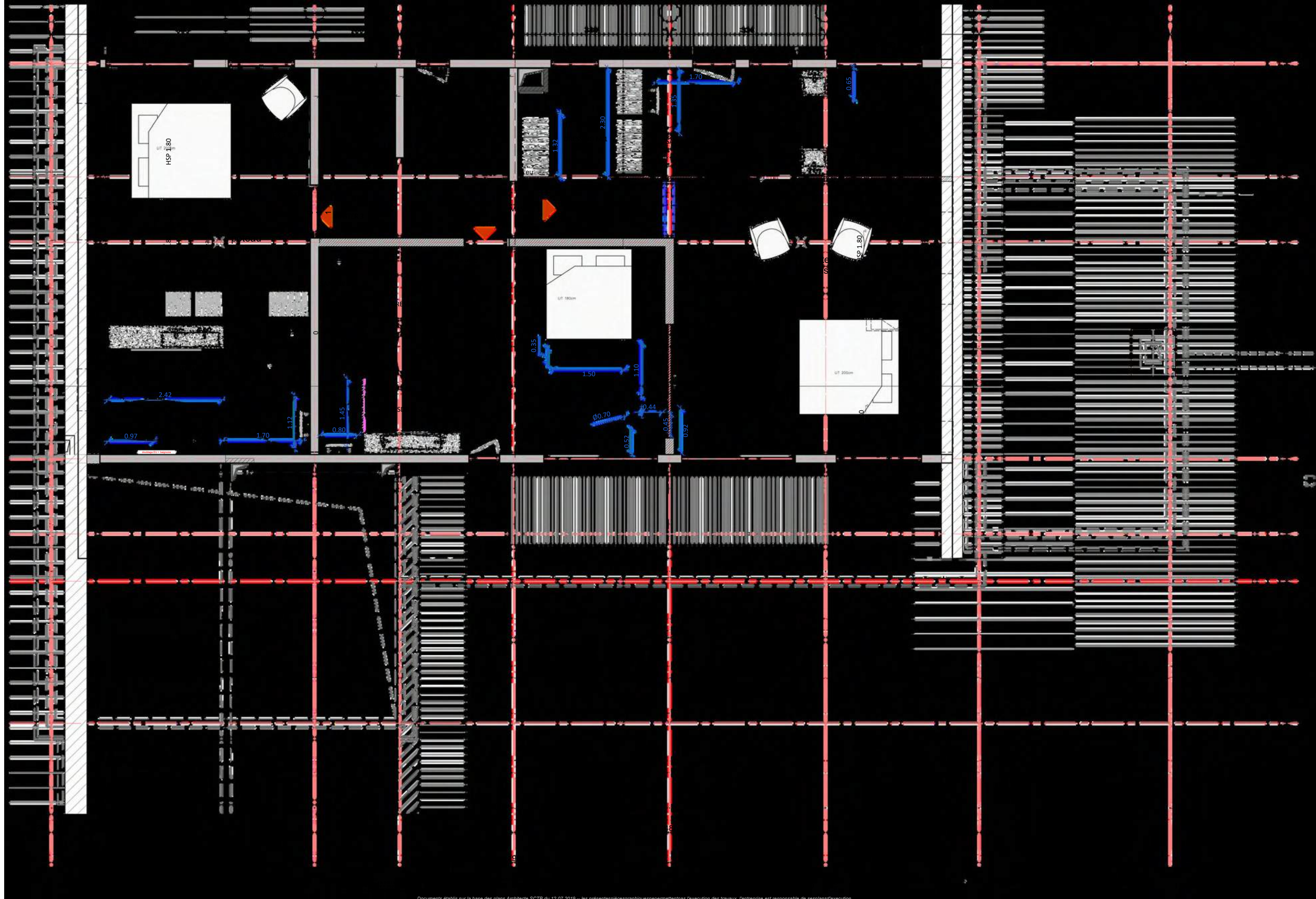
FIRST FLOOR

MASTER GUEST SUITE 1,
DRESSING ROOM AND
ENSUITE

MASTER GUEST SUITE 2,
DRESSING ROOM AND
ENSUITE

MASTER GUEST SUITE 3 &
ENSUITE

ELEVATOR
ACCESS VIA STAIRWAY
LEADING FROM GROUND
FLOOR

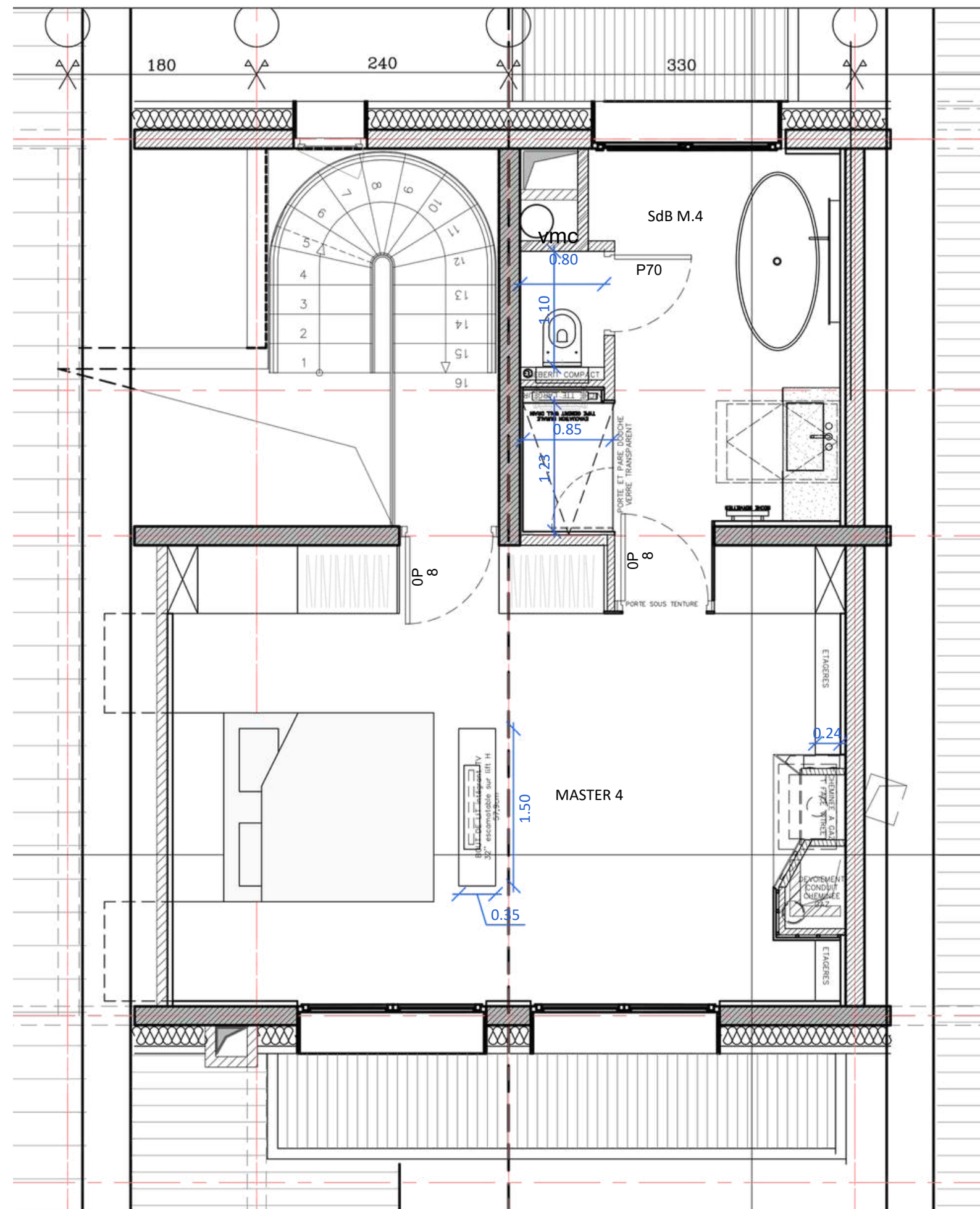


PENTHOUSE FLOOR

MASTER GUEST SUITE 4,
DRESSING ROOM AND ENSUITE

PRIVATE BALCONY

ACCESS VIA STAIRWAY LEADING FROM
GROUND FLOOR



LOWER FLOOR KIDS

KIDS DEN (GUEST ROOM 1)

GUEST ROOM 2

GUEST ROOM 3

CINEMA

SKI LOUNGE

SPA

POOL

SAUNA

OUTDOOR JACUZZI

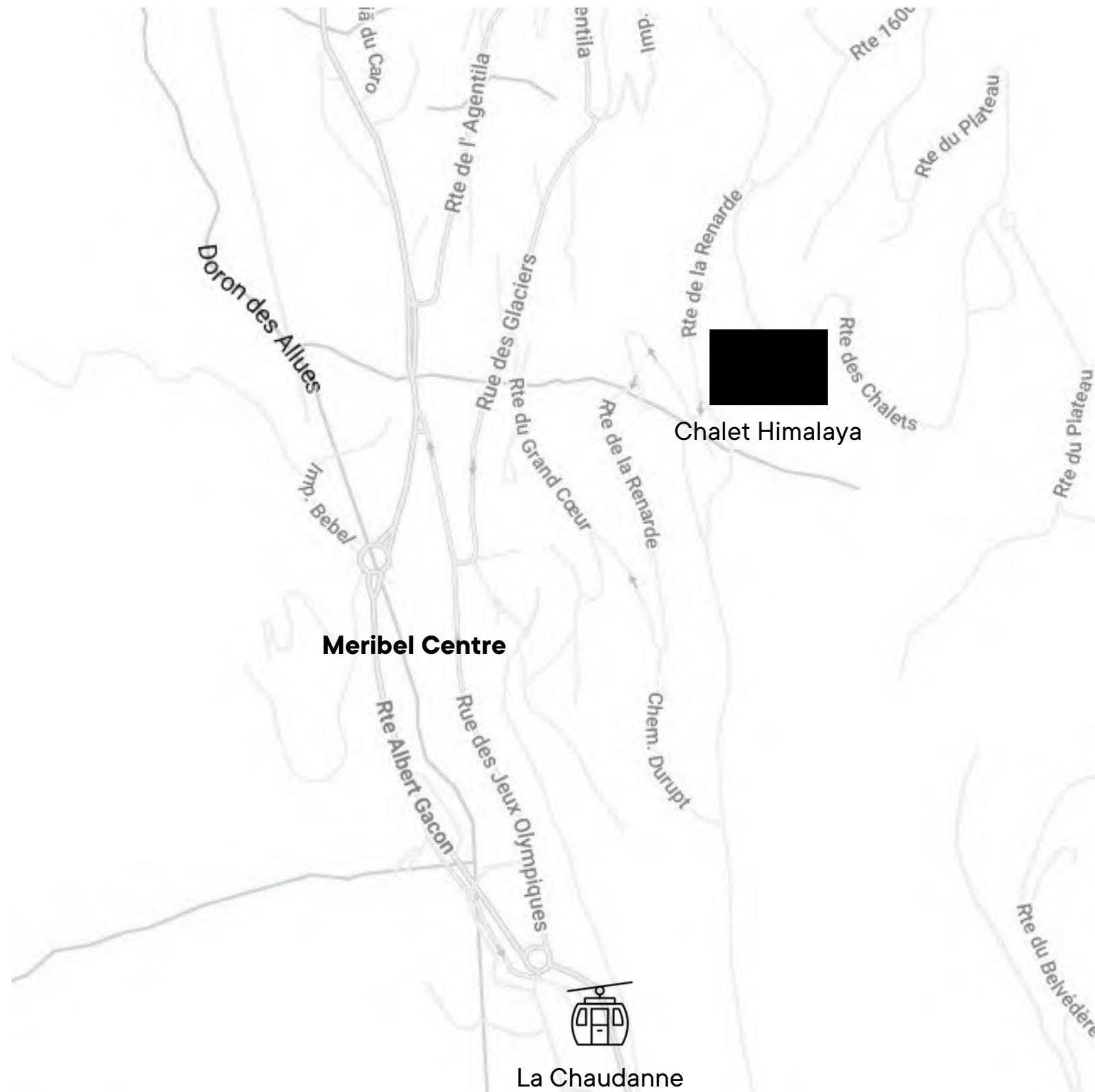
GYM

MASSAGE SPACE



CHALET LOCATION

CHALET HIMALAYA
MERIBEL, FRANCE



Méribel Centre - 5 min by chauffeur
Le Rond Point - 3 min by chauffeur
La Chaudanne ski lift - 9 min by chauffeur
Google coordinates - 45°23'54.4"N 6°34'12.1"E