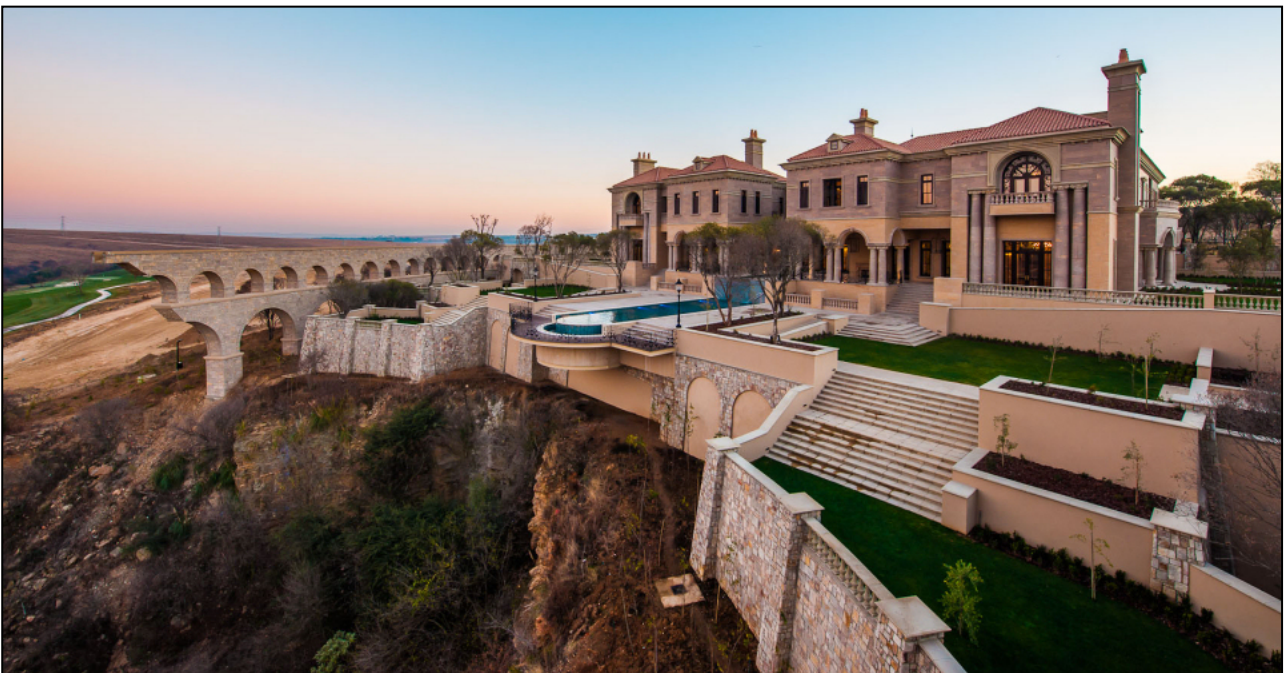


**Photograph 1: Construction of informal homes along stormwater drains, Diepsloot, Gauteng (Question 1.2) and (Question 1.3)**

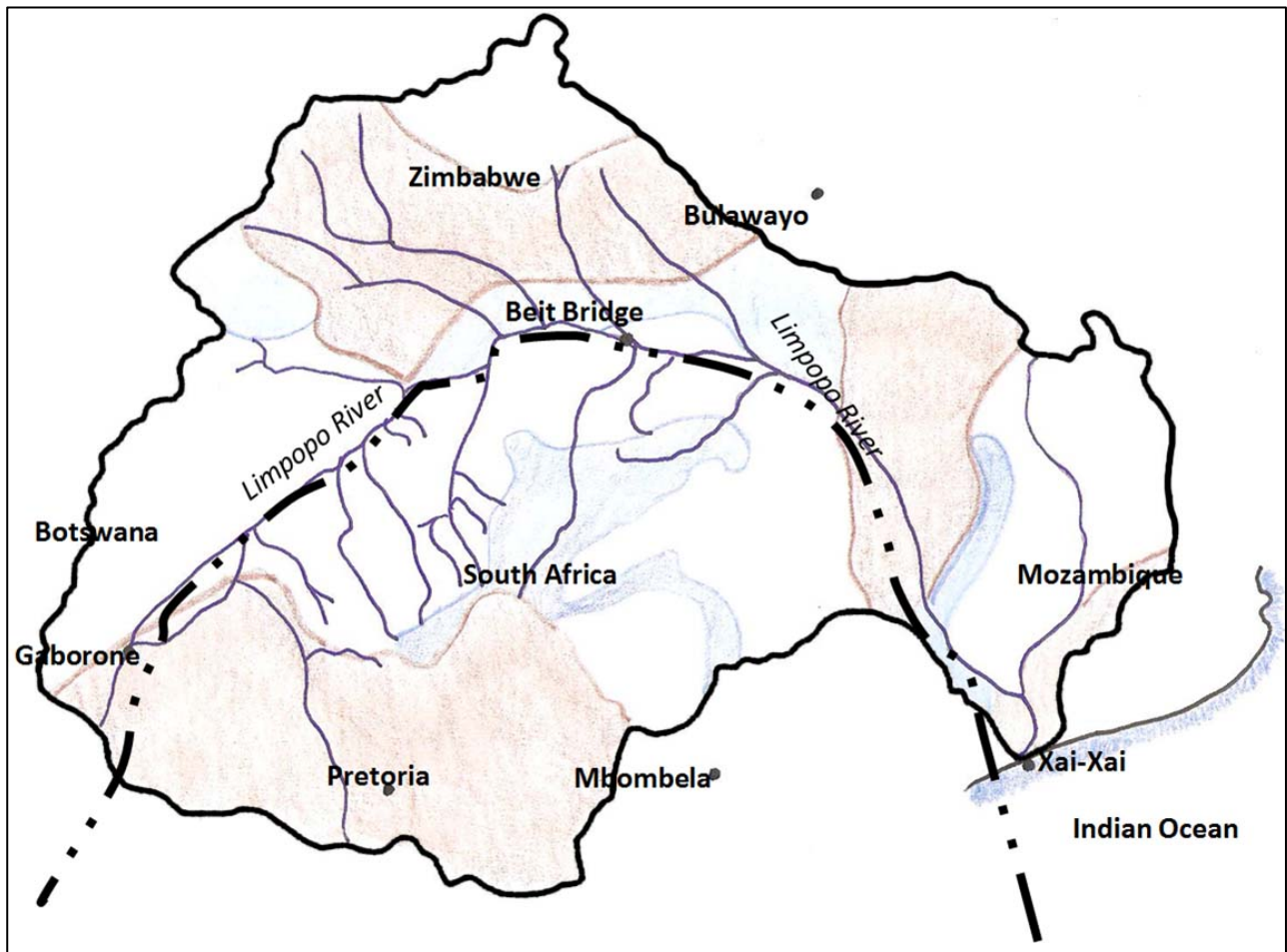


[Source: Ngie, A., University of Johannesburg, 2011]

**Photograph 2: New home for Mr Douw Steyn, Steyn City, Gauteng (Question 1.2)**



[Source: DBM Architects]

**Figure 8: Limpopo drainage basin (Question 2.4)**

[Source: Examiners' map]

**Map Key:**

- Brown shaded areas reflect natural aquifers\*
- Blue shaded areas indicate major ground water basins
- — ■ — ■ — International boundary line
- ————— Watershed of the Limpopo River drainage basin

\* (an underground layer of water-bearing permeable rock or from which groundwater can be extracted using a water well)



**Photograph 3: Rural settlement along the Mooi River, Muden, KwaZulu-Natal (Question 3.2)**



[Source: Examiner's photo]

**Photograph 4: Taxi rank (Question 3.3)**



[Source: Examiner's photo]

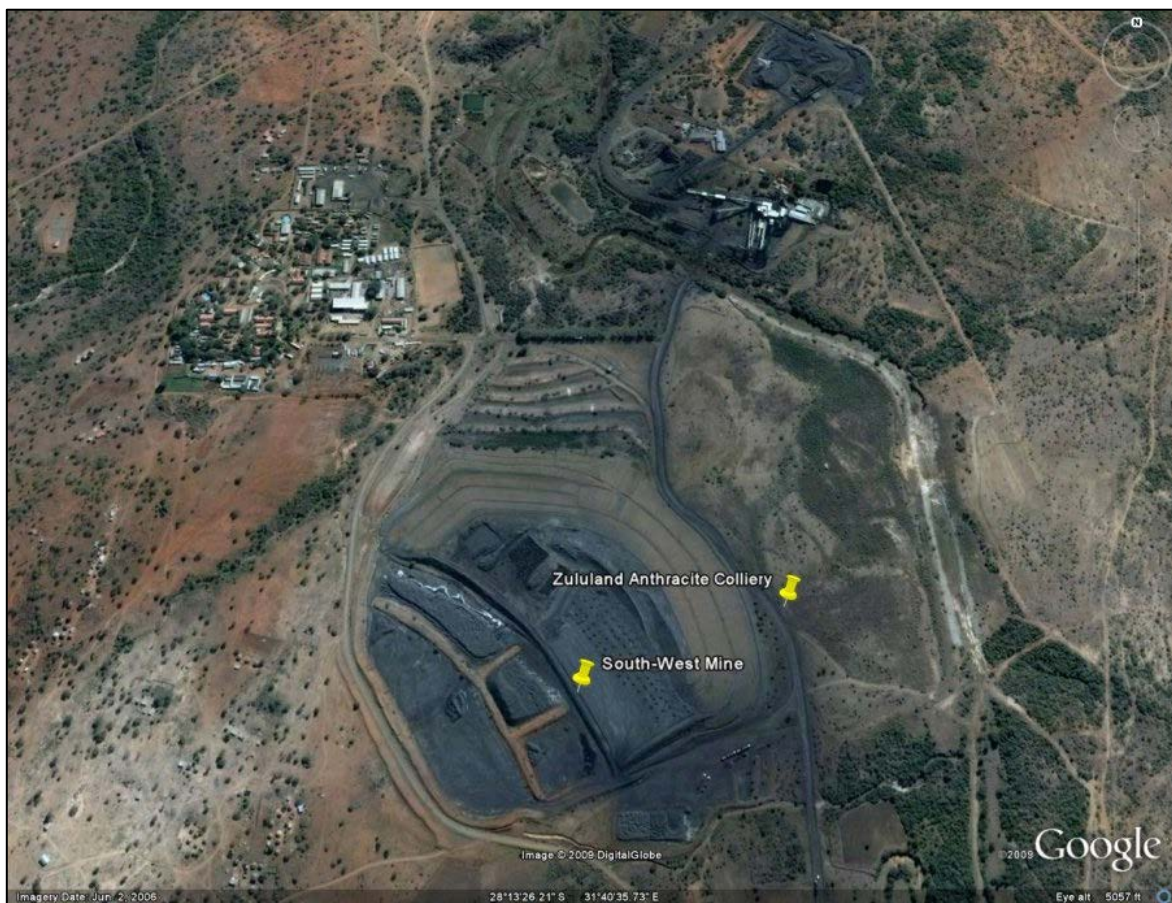


**Photograph 5: Traditional muti (*medicine*) traders (Question 3.3)**



[Source: Examiner's photo]

**Photograph 6: Mining currently taking place adjacent to the Hluhluwe-iMfolozi Game Reserve, KwaZulu-Natal (Question 3.4)**



[Source: Google Earth]