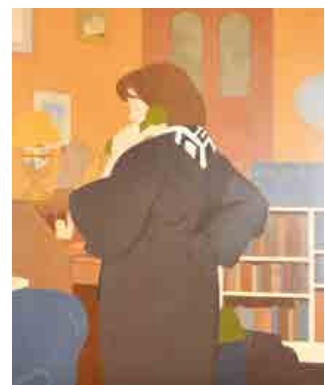




PARKER
FINE ART AUCTIONS
Fine Paintings
& Frames Sale
with a collection of
Fine Art Books
Thursday 10th July 2025 at 11am



PARKER
FINE ART AUCTIONS

Forthcoming Fine Paintings & Frames Sale

7th August 2025

To consign to our sales is just
£10 (+VAT) per lot

Includes all commission,
illustration and insurance.
No other charges



PARKER

FINE ART AUCTIONS

Hawthorn House | East Street | Farnham | Surrey | GU9 7SX

Fine Paintings & Frames Sale

Thursday 10th July 2025

Paintings starting at 11am

Frames starting at 2pm

VIEWING

Friday 4th July 10am to 4pm

Saturday 5th July 10am to 2pm

Sunday 6th July 10am to 2pm

Monday 7th July 10am to 4pm

Tuesday 8th July 10am to 4pm

Wednesday 9th July 10am to 4pm

Thursday 10th July from 9am

Telephone bids and absentee bids will be accepted until 9am on the day of the sale.

01252 20 30 20 | info@parkerfineartauctions.com

LIVE ONLINE BIDDING AT



the-saleroom.com



easyliveauction.com

Each lot subject to a buyer's premium of 25% + VAT (plus additional online bidding fees where applicable)

Key to cover illustrations



Lot 212	Lot 94	Lot 222	Lot 306	Lot 318	Lot 339
Lot 218	PARKER FINE ART AUCTIONS Fine Paintings & Frames Sale and a collection of Fine Art Books Thursday 10th July 2025 at 11am	Lot 39	Lot 341	PARKER FINE ART AUCTIONS 01252 20 30 20 info@parkerfineartauctions.com parkerfineartauctions.com	Lot 342
Lot 125		Lot 33	Lot 354		Lot 452
Lot 266		Lot 12	Lot 454		Lot 469
Lot 252	Lot 183	Lot 259	Lot 163	Lot 195	Lot 471
					Lot 474
					Lot 481

Parker Fine Art Auctions Ltd

Hawthorn House, East Street, Farnham, GU9 7SX

Registered in England 12554522 VAT Registration No. 347 2406 07

All terms and conditions are on our website parkerfineartauctions.com

Please note: droite de suite is paid by the vendor



Photography by PRC Digital office@prcdigital.co.uk

British and European Paintings Pre 1850



1. After Robert Pyle (18th Century) British
"Autumn"
Engraved by R Houston
12.25" x 9.5" (31.1 x 24.2cm)
£100-£150



2. 18th Century English School
"Autumn"
Mezzotint
12.5" x 10" (31.7 x 25.4cm)
£100-£150



3. 18th Century English School
The Four Seasons
Engravings published by John Fairburn
Overall, unframed 14.25" x 9.75" (36.2 x 24.8cm) (4)
£100-£200



4. After John Collet (1725-1780) British
"Tight Lacing, or Fashion Before Ease"
Etching
Published by Bowles & Carver
12.75" x 9.75" (32.4 x 24.7cm)
£100-£150

5. Rembrandt van Rijn (1606-1669) Dutch
The Agony in the Garden
Etching
Unframed 4.5" x 3.4" (11.4 x 8.5cm)
£200-£300



6. After John Hoppner (1753-1810) British
"Admiral Lord Nelson"
Engraved by C Turner
Unframed 23.25" x 15.5" (59 x 39.4cm)
£100-£150



7. After Rembrandt van Rijn (1606-1669) Dutch
Portrait of Jan Asselyn
Etching
Unframed 7.25" x 6.25" (18.4 x 15.9cm)
And eleven others by various hands (12)
£100-£200



8. John Ogilby (1600-1676) British
 "The Road From London to Arundel"
 Map
 12.5" x 17.25" (31.7 x 43.7cm)
 £100-£200



9. Late 18th Century English School
 "Spring-Summer"
 Engraving published by P Barnaschina
 9.5" x 13.5" (24.2 x 34.3cm)
 £100-£150



10. Early 19th Century English School
 "Woodcock Shooting"
 Print on glass
 Published by Stampa and Son
 In a period frame
 Overall 10" x 13.75" (25.4 x 34.9cm)
 £100-£150



11. After Robert Ker Porter (1777-1842) British
 "Loyal Associated and Volunteer Corps of the City of Westminster"
 Engraved by M Place
 17.75" x 24.5" (45.1 x 62.2cm)
 Provenance: The Parker Gallery
 £100-£200



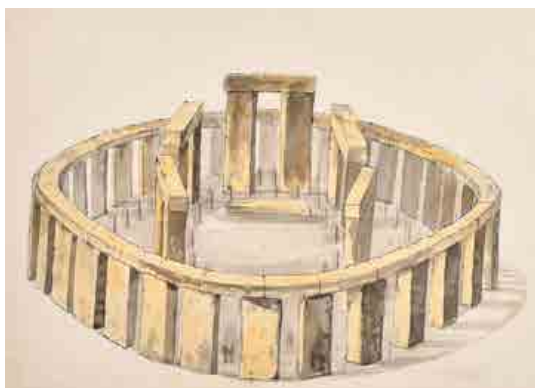
12. Heinrich Gottlieb Ludwig Reichenbach
(1793-1879) German
A Set of Eleven Bird Studies
Watercolour
Inscribed
Mounted, unframed 4.4" x 3.75" (11.1 x 9.5cm)
And various other sizes (11)
£800-£1200



13. 18th Century European School
Still Life of Game
Chalk and pencil
Unframed 16.25" x 21" (41.2 x 53.3cm)
£100-£200



14. Job Bulman (1745-1818) British
"The East View, Raven's Tor, Derbyshire"
Watercolour
Inscribed in pencil verso
Unframed 14.25" x 21" (36.2 x 53.3cm)
£100-£150



15. Early 19th Century English School
'Stonehenge', inspired by John Webb
Watercolour
Inscribed on a label verso
Mounted, unframed 13" x 18" (33 x 45.7cm)
£100-£200



16. Moses Griffith (1747-1819) British
River Landscape with a Watermill
Watercolour
Inscribed on a label verso
9.75" x 13.5" (24.8 x 34.2cm)
Notes: Believed to depict a mill between Machynlleth and Dolgellau
£100-£200



17. Francois Louis Thomas Francia (1772-1839) French
A Pair of Landscapes
Watercolour
Inscribed on a label verso
3" x 5" (7.6 x 12.7cm)
Provenance: Sotheby's, 1952; Thos Agnew & Sons Ltd, London, 1953 (2)
£100-£200



18. Circle of Joseph Mallord William Turner
(1775-1851) British
'Calder Abbey, English Lake District'
Watercolour
Inscribed on a label verso
9.25" x 13.25" (23.5 x 33.7cm)
Provenance: Sir Wilfrid Lawson
£100-£200



19. Circle of Joseph Mallord William Turner
(1775-1851) British
'Furness Abbey, Lancashire' (1796)
Watercolour
Inscribed on labels verso
9.25" x 13.25" (23.5 x 33.6cm)
Provenance: Huntington Gallery California, 1952
£100-£200



20. John Varley (1778-1842) British
Figures in an Italianate Landscape
Watercolour
Signed, and inscribed on a label verso
10.25" x 15" (26 x 38.1cm)
£100-£200





21. **Peter de Wint (1784-1849) British**
The Lookout Tower
 Watercolour
 Inscribed on a label verso
 Oval 11.5" x 9.75" (29.3 x 24.8cm)
£100-£150

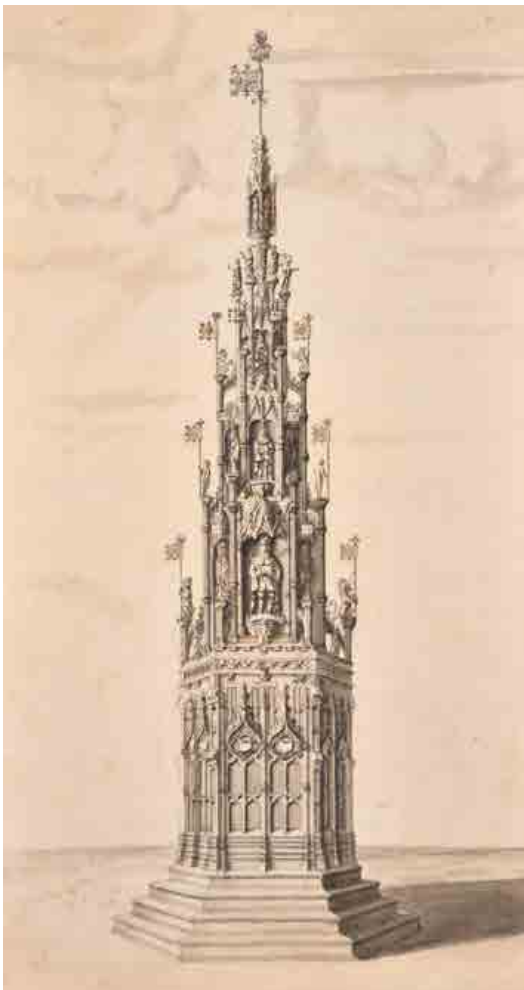


22. **Johann Melchior Roos (1663-1731) German**
Bears in the Wild
 Pencil, chalk and wash
 Signed, inscribed and dated 1716, and inscribed on a label verso
 17.5" x 12.25" (44.4 x 31.1cm)
 Provenance: Abbott & Holder, London
£100-£200



23. **Early 19th Century English School**
A Seated Lady with her Dog
 Watercolour and pencil
 5.75" x 4.5" (14.6 x 11.4cm)
£100-£150

24. Circle of Henri Joseph Redoute
(1766-1852) Belgian
A Rose Study with insects and butterflies
Watercolour
10.25" x 7.25" (26 x 18.2cm)
£200-£300



25. Early 19th Century English School
The Coventry Cross
Watercolour and ink
Unframed 13.5" x 7.25" (34.3 x 18.4cm)
£150-£250



26. Circle of Richard Parkes Bonington (1802-1828) British
Figures in a Cathedral Interior
Oil on panel
5.75" x 4.25" (14.7 x 10.7cm)
£100-£200



27. 18th Century European School
Saint Augustine holding the Ecclesial Heart
Oil on canvas
34.25" x 27.25" (87 x 69.2cm)
£200-£300



28. 19th Century English School
Woodcutters by a Cottage
Oil on canvas
9.5" x 13" (24.2 x 33cm)
£100-£200



29. 18th Century Italian School
Station of the Cross
Oil on canvas
Shaped 26" x 31.5" (66 x 80cm)
£150-£250



30. Early 19th Century European School
A River Landscape with a Hillside Villa
Oil on canvas
27" x 41" (68.6 x 104.1cm)
£400-£600

31. After Michelangelo Anselmi
(1492-1566) Italian
Portrait of Giovan Battista Castaldi
Oil on canvas
Unframed 15.5" x 12.25" (39.3 x 31.1cm)
And another portrait of a Gentleman (2)
£300-£500



32. After Peter Lely (1618-1680) British
Letitia Isabella Smith, Lady Robartes,
later Countess of Radnor
Oil on canvas
30" x 24.75" (76.2 x 62.8cm)
Notes: The original is in the Lanhydrock collection,
Cornwall
£800-£1200



33. Attributed to Gawen Hamilton (1697-1737) British

Mr and Mrs Henry Mason of Tathwell Hall, Louth

Oil on canvas

Inscribed on a label verso

In a period darkwood and carved frame

30" x 24.75" (76.2 x 62.8cm)

Provenance: By descent from the Mason family

£2000-£3000

British and European Paintings Pre 1900



34. Charles Emile Jacque (1813-1894) French
"Entrance to an Inn, with Peasants Drinking"
Etching
Unframed 5" x 5.8" (12.7 x 14.8cm)
Together with three other etchings by various hands (4)
£100-£150



35. 19th Century English School
"Great Grimsby Dock"
Print
Overall 17" x 22" (43.2 x 55.8cm)
Together with a print of "The South West Prospect or Perspective View of Stour Port" (2)
£100-£150



36. 19th Century Swiss School
"Vallee de Lauterbrunne"
Print
8" x 11" (20.3 x 27.8cm)
And companion piece, a pair (2)
£100-£150



37. Hiroshige Utagawa (1797-1858) Japanese
Stations of the Tokaido
Woodblock
9.5" x 13.25" (24.1 x 33.6cm)
£100-£150



38. After Roger Fenton
(1819-1869) British
"York Minster"
Photogalvanic
Arched unframed 8.5" x 7"
(21.6 x 17.8cm)
Together with two engravings
by other hands (3)
£100-£200



39. Rosa Bonheur (1822-1899) French

Deer in a Woodland

Watercolour

Signed and dated 1872

9" x 12.25" (22.8 x 31.1cm)

£500-£800



40. 19th Century Italian School
The Bay of Naples with Vesuvius in the distance
Gouache
Circular 11.75" x 11.75" (29.8 x 29.8cm)
And the companion piece, a pair (2)
£150-£250



41. 19th Century Italian School
"Mount Etna"
Gouache
Inscribed
2.5" x 4.25" (6.3 x 10.8cm)
And the companion piece, a pair (2)
£100-£200



42. 19th Century Italian School
Classical Ruins
Watercolour
3.25" x 5" (8.2 x 12.7cm)
And the companion piece, a pair (2)
£200-£300



43. 19th Century Italian School
The Bay of Naples with Vesuvius Erupting
Gouache
Unframed 18" x 24.5" (45.7 x 62.2cm)
£100-£200



44. 19th Century Italian School
A Coastal Scene with Vesuvius in the distance
Gouache
6.25" x 9.25" (15.8 x 23.5cm)
£150-£250



45. 19th Century European School

"Eruption of Vesuvius"

Watercolour

Inscribed and dated Mar 1872, and extensively inscribed verso

Mounted, unframed 10.5" x 16" (26.7 x 40.6cm)

And two other watercolours by other hands (3)

£80-£120



46. Early 20th Century Italian School

Bay of Naples with Vesuvius in the distance

Gouache

Oval 10.75" x 14.75" (27.2 x 37.4cm)

And the companion piece, a pair (2)

£100-£150

47. **William Payne (1760-1830) British**
 "A Devon River Scene"
 Watercolour
 Signed, and inscribed on labels verso
 14.5" x 20.75" (36.8 x 52.7cm)
 Provenance: The Fine Art Society Ltd, London 1959;
 Dreweatts, 2015
£150-£250



48. **William Bennett (1811-1871) British**
 'Cattle Watering in a River Gorge, a Rainbow behind'
 Watercolour
 Signed and dated 1863, and inscribed on labels verso
 14" x 20.75" (35.5 x 52.7cm)
 Provenance: Guarisco Gallery, Washington DC;
 Bonhams, San Francisco
£120-£180



49. **Harrison William Weir (1824-1906) British**
 'A Spring Morning, Cattle Watering'
 Watercolour
 Signed and dated Aug 31st 1847, and inscribed on
 labels verso
 13.5" x 20" (34.3 x 50.8cm)
£120-£180





50. **Frederick John Widgery (1861-1942) British**
A Pair of Moorland Scenes
 Watercolour
 Signed
 11" x 17.5" (28 x 44.4cm) (2)
£100-£200



51. **Henry Harry Stannard (1844-1920) British**
"A Twitch Fire"
 Watercolour
 Signed, and inscribed on a photocopy of a label verso
 16.5" x 26.25" (41.9 x 66.7cm)
£100-£150



52. **Early 19th Century English School**
The Clifton Suspension Bridge with a paddle steamer on the water below
 Watercolour and gouache
 25" x 36.5" (63.5 x 92.7cm)
£100-£200



53. **19th Century Chinese School**
A Pair of Bird Studies
 Watercolour on rice paper
 7.5" x 11.5" (19 x 29.2cm) (2)
£100-£200



54. **David Cox (1783-1859) British**
 'Travellers by the Malverns, Nr Hereford'
 Watercolour
 Signed and dated 1853, and inscribed on a label verso
 11" x 16" (28 x 40.6cm)
 Provenance: Phoenix Fine Art, 2009
£200-£300



55. **Alfred Heaton Cooper (1864-1929) British**
 A Sailing Boat in a Swiss Lake
 Watercolour
 Signed
 9.25" x 13" (23.4 x 33cm)
£200-£300



56. **19th Century English School**
 "View of Rochester"
 Watercolour
 Inscribed on a label verso
 8.75" x 16.25" (22.2 x 41.2cm)
£100-£200





57. Charles Cattermole (1832-1900) British
 'A Knight's Squire'
 Watercolour
 Unframed 6" x 17.5" (15.2 x 44.4cm)
 And the companion piece, a pair (2)
 £150-£200



58. Joseph Hughes Clayton (1870-1930) British
 Anglesey Cottage and Fishing Boat
 Watercolour
 Signed
 12.5" x 19.5" (31.7 x 49.5cm)
 £100-£200



59. Attributed to John Ruskin (1819-1900) British
 "Seascape, Moonlight"
 Watercolour
 Inscribed on a label verso
 3.35" x 5.15" (8.4 x 12.9cm)
 Provenance: P & D Colnaghi & Co. Ltd, London
 £100-£200



60. Circle of Edward John Poynter (1836-1919) British
A Nude Study
Pencil
Inscribed on a label verso
11.75" x 5.75" (29.8 x 14.6cm)
Provenance: Lafitte Galleries, Dorset
£100-£200



61. Edmund Thomas Parris (1793-1873) British
A Chinese Tea Party
Ink
Signed and dated 1848
Mounted, unframed 11" x 8" (27.9 x 20.3cm)
£100-£150



62. Joseph Knight (1837-1909) British
Study of Two Gentleman with a Hookah
Ink
Inscribed 'Manchester, Nov 18 66'
6.5" x 4.5" (16.5 x 11.4cm)
£100-£150



63. L. Burton (19th Century) British
Lord Byron
Pencil
Signed and inscribed
Unframed 7" x 4.5" (17.7 x 11.4cm)
£100-£200



64. Charles Burton Barber (1845-1894) British
'A Girl Leaning over a Chair'
Crayon
Signed and dated 1881
16" x 12.75" (40.6 x 32.3cm)
£200-£300



65. Edith Augusta James
(1857-1898) British
Young Girl with Flowers
Pastel
Signed and dated '97
25' x 15.5' (63.5 x 39.3cm)
And the companion piece, a pair (2)
£150-£200



66. John Varley Jnr (1850-1933) British
Figures on the Steps of a Japanese Temple
Watercolour
Signed and dated 90
20.5" x 14" (52.1 x 35.5cm)
£200-£400



67. Herbert Luther Smith (1809-1870) British
Portrait of a Major in the British Army during the Crimean War
Watercolour
Signed and dated 1857, and inscribed on a label verso
21.5" x 14.75" (54.7 x 37.4cm)
£300-£500



68. Circle of Charles Baxter (1809-1879) British
Companions
Oil on panel
Arched 29.75" x 24.75" (75.5 x 60.3cm)
£300-£400



69. **Samuel Griffiths Tovey (1808-1873) British**
A Venetian Canal Scene
 Watercolour
 Signed and dated 1865
 9" x 13" (22.8 x 33cm)
£100-£200



70. **Charles Ward (act.1826-1869) British**
'Okehampton Castle'
 Oil on canvas
 Indistinctly signed with initials and dated 1825
 20" x 30" (50.8 x 76.2cm)
 Provenance: The Swan Gallery, Sherborne
£100-£200



71. **George Balfour Knight (1809-1894) British**
Still Life of Dead Game and Fruit
 Oil on canvas
 Signed and dated 1876
 12" x 16" (30.5 x 40.6cm)
£100-£150



72. **Attributed to Henry Cheadle (1852-1910) British**
"Kenilworth Castle"
 Oil on canvas
 Inscribed on a label verso
 9" x 14" (22.8 x 35.5cm)
£100-£200



73. **Walter Scott Boyd (1834-1901) British**
A Stone House
 Oil on canvas
 Signed and dated 1894
 In an inscribed oak frame
 15" x 17" (38.1 x 43.2cm)
£100-£150



74. **Samuel Henry Baker (1824-1909) British**
"The Castle Gate, Ludlow"
 Oil on panel
 Signed with initials, and inscribed on a label verso
 7" x 11" (17.8 x 27.9cm)
£100-£150

75. **Leopold Rivers (1852-1905) British**
Shepherd and Flock by a Cottage
 Oil on panel
 Signed
 12" x 18" (30.5 x 45.7cm)
 £150-£250



76. **G W (19th-20th Century) British**
A Moonlit River Landscape
 Oil on board
 With incised initials
 7" x 9" (17.8 x 22.8cm)
 £200-£300



77. **Circle of David Bates (1840-1921) British**
A Moored Boat by a Loch
 Oil on canvas
 Bears a signature
 14" x 21" (35.5 x 53.3cm)
 £200-£300





78. **L Richards (1868-1940) British**
Surrey Cottages
 Oil on canvas
 Signed
 16" x 24" (40.6 x 61cm)
£300-£500



79. **Joshua H Seeley (fl.1815-1828) British**
"View Near Godalming, Surrey"
 Oil on canvas
 Signed, and inscribed on a label verso
 14" x 18" (35.5 x 45.7cm)
 Provenance: Cider House Galleries, Surrey
£250-£350



80. **Louis Adolphe Hervier (1818-1879) French**
'Extensive French Landscape'
 Oil on panel
 Signed, and inscribed on a label verso
 In a fine gilt composition Barbizon frame
 5.25" x 7.75" (13.4 x 19.7cm)
 Provenance: Cider House Galleries, Surrey
£100-£200



81. James Salt (1850-1903) British
A Pair of Capriccio Views of Venice
Oil on canvas
Signed
14" x 24" (35.5 x 61cm) (2)
£1800-£2400



82. **John Linnell (1792-1882) British**
 Figures by a Brook
 Oil on panel
 Signed, and indistinctly inscribed on a label verso
 8.25" x 12.25" (21 x 31.1cm)
 £400-£600



83. **Joseph Thors (1835-1884) British**
 Figures in a River Landscape
 Oil on canvas
 Signed
 16" x 24" (40.6 x 61cm)
 £400-£600



84. **Hermanus Jan Hendrik Rijkelijhuizen (1813-1883) Dutch**
 A River Landscape
 Oil on panel
 Signed
 9.5" x 11.5" (24.1 x 29.2cm)
 £200-£300



85. William Meadows (1825-1901) British
A Pair of Venetian Scenes
Oil on canvas
Signed
18" x 32" (45.7 x 81.3cm) (2)
£2500-£3500



86. Circle of Joseph Thors (1835-1884) British
Figures and Cattle in a Country Lane
Oil on canvas
14" x 12" (35.5 x 30.5cm)
£200-£300



87. Circle of Guido Agostini (act.1865-1898) Italian
Figure in an Italian Town
Oil on board
Oval 8.25" x 6.25" (21 x 15.8cm)
£80-£120



88. Daniel Munro (fl.1840-1880) British
"The New Scholar"
Oil on panel
Inscribed on a label verso
12" x 10" (30.5 x 25.4cm)
£200-£300



89. Richard Green (19th Century) British
Still Life of Hanging Game
Oil on board
Signed and dated 1870 in pencil verso
17.25" x 13" (43.7 x 33cm)
£100-£200

90. Late 19th Century French School
 Lady with a Muff
 Oil on paper
 14.25" x 10" (36.2 x 25.4cm)
 £400-£600



91. 19th Century English School
 Bust Portrait of a Man with a Turban
 Pencil heightened with white
 Indistinctly signed and dated 1855
 Unframed 17" x 11.5" (43.2 x 29.3cm)
 £150-£250



92. Corneille Petit (19th Century) Belgian
Feeding Time
Oil on panel
Signed and indistinctly dated
16.5" x 13" (42 x 33cm)
£300-£400



93. Circle of William A Breakspeare
(1855-1914) British
Portrait of a Lady
Oil on panel
Inscribed
In a Watts gilt composition frame
18" x 14" (45.7 x 35.5cm)
£200-£300



94. **Edmund John Neimann (1813-1876) British**

"Eton College"

Oil on canvas

Inscribed on a plaque

24" x 36" (61 x 91.5cm)

£1000-£1500



95. 19th Century American School
 Bust Portrait of a Seated Gentleman
 Oil on canvas
 In a period American frame
 30" x 26" (76.2 x 66cm)
 And the companion piece, a portrait of his wife, a pair (2)
 £500-£800



96. Early 19th Century American School

Portrait of a Mother and Child

Oil on canvas

36" x 30.5" (91.5 x 77.4cm)

£800-£1200

97. G Hook (19th-20th Century) British
 Sheep in a Pastoral Landscape
 Oil on canvas
 Signed
 8" x 12" (20.3 x 30.5cm)
 £100-£150



98. Anthony de Bree (1856-1921) British
 A Stable Interior with Figures and Horses
 Oil on panel
 Signed and dated 85
 6" x 8" (15.2 x 20.3cm)
 And the companion piece, a pair (2)
 £400-£600



99. **Alfred Augustus Glendening (1840-1921) British**
 Windsor Castle from The Thames
 Oil on canvas
 Signed and dated '02
 12" x 20" (30.5 x 50.8cm)
£700-£1000

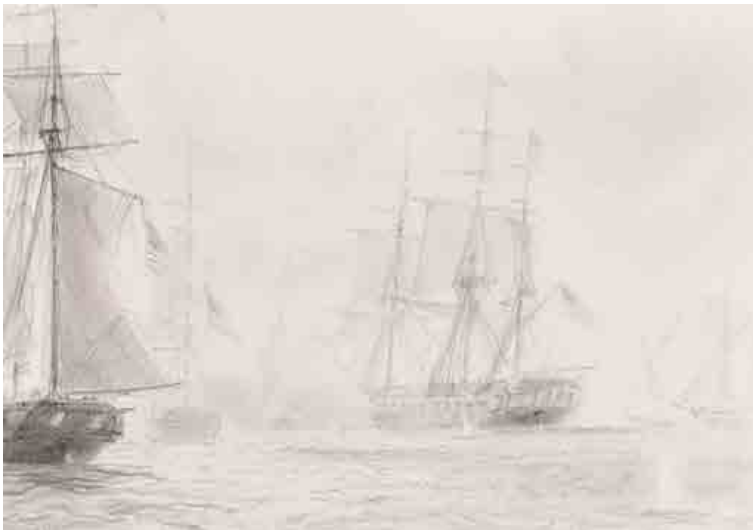


100. **Alfred Vickers (1786-1868) British**
 An Extensive Wooded Landscape
 Oil on canvas
 Signed, and inscribed on a label verso
 26" x 42" (66 x 106.7cm)
£700-£900

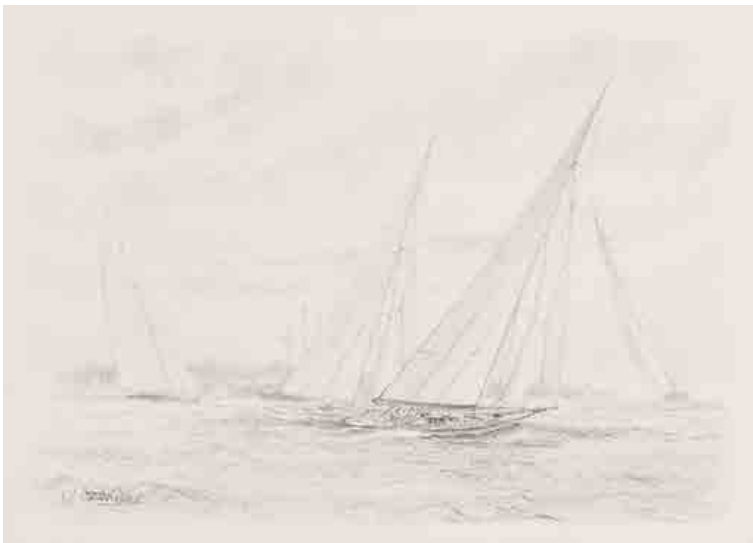
Marine Paintings



101. **John Steven Dews (1949-) British**
Preparatory Sketch for 'The Battle of Copenhagen'
Pencil
Inscribed on the plaque
8" x 11.5" (20.3 x 29.2cm)
£100-£200



102. **John Steven Dews (1949-) British**
Preparatory Sketch for 'The Bombardment of Tripoli'
Pencil
Inscribed on the plaque
7" x 10" (17.7 x 25.4cm)
£100-£200



103. **John Steven Dews (1949-) British**
'Racing through Cowes'
Pencil
Signed
8" x 10.75" (23 x 27.3cm)
£100-£200

104. **Thomas Sewell Robins (1814-1880) British**
Shipping in Choppy Waters
 Watercolour
 Inscribed on a label verso
 8.75" x 12.5" (22.2 x 31.7cm)
 Provenance: Walker Morris Gallery, Bolton
£100-£150



105. **G Roberto (19th-20th Century) European**
"Menapian"
 Gouache
 Signed, inscribed and dated
 16.75" x 26" (42.6 x 66cm)
£100-£200



106. **20th Century European School**
A Harbour Scene
 Oil on canvas
 Indistinctly signed
 23.75" x 31.75" (60.3 x 80.3cm)
£100-£150



107. **Rubens Arthur Moore (1860-1933) British**
 "Dutch Pinks laying in Dort Harbour, Holland"
 Oil on board
 Signed and dated 1882, and inscribed on a label verso
 6.25" x 8.5" (15.8 x 21.6cm)
 Exhibited: Spring Exhibition, St James Hall, Derby 1883
 £200-£300



108. **Frederick Calvert (1785-1845) British**
 'Shipping in The Hamoaze'
 Oil on canvas
 Signed with initials (one)
 10" x 14" (25.4 x 35.5cm)
 And the companion piece, 'Perch Rock', a pair (2)
 £800-£1200

Sporting and Animalia



109. John James Audubon (1785-1851) Haitian
"Great American Hen & Young
Vulgo Female Wild Turkey Meleagris Gallopavo" (plate VI, No. 11)
Etching
Engraved by W H Lizars, Coloured by R Havell Sen
26.5" x 39.25" (67.3 x 99.7cm)
£2000-£3000

110. After John James Audubon (1785-1851) Haitian
 "Shoveler Duck, *Anas Clypeata*"
 Print
 18.75" x 27.75" (47.7 x 70.5cm)
 £100-£200



111. 20th Century German School
 Study of a Whale
 Print by Dr Tauber, published by KG Lutz
 23" x 34.25" (58.3 x 87cm)
 Together with a print of seals (2)
 £100-£200



112. Vere Lucy Temple (1898-1980) British
"Matilda"

Watercolour and pencil

Inscribed on a label verso

9" x 10.75" (22.8 x 27.2cm)

Provenance: Artist's estate; Abbott & Holder Ltd, London
£100-£200



113. Gwen John (1876-1939) British

Study of a Cat

Watercolour and pencil

Inscribed on a label verso

6.25" x 4.5" (15.9 x 11.5cm)

Provenance: Matthiesen Ltd, London, Catalogue

No.52, February-March 1958

£600-£800



114. Mabel Gear (1898-1987) British
Young Puppies
Watercolour and pencil heightened with white
Signed in pencil
8.5" x 11" (21.6 x 27.9cm)
Provenance: The Medici Society
£200-£300



115. Vincent De Vos (1829-1875) Belgian
Caught
Oil on panel
Signed, and inscribed on a label verso
7" x 9.5" (17.7 x 24.1cm)
£200-£300



116. Vincent De Vos (1829-1875) Belgian
Curious
Oil on panel
Signed, and inscribed on a label verso
7" x 9.5" (17.7 x 24.1cm)
£200-£300



117. Patricia O'Brien (1927-) Irish
 "Ludwig"
 Oil on canvas
 Signed and dated '78
 20" x 30" (50.8 x 76.2cm)
 Provenance: From the artist's family
 £200-£300



118. Horatio Henry Couldery (1832-1893) British
 'A Vigilant Mother'
 Oil on canvas
 Signed and dated 1876
 20.25" x 30.25" (51.4 x 76.8cm)
 £700-£900



119. 19th Century English School
A Bull in a Stable Interior
Oil on canvas
Unframed 19.25" x 28.25"
(48.8 x 71.7cm)
£200-£400



120. 19th Century English School
A Great Hereford Ox
Oil on paper laid down
Inscribed, and inscribed on a label verso
9" x 12" (22.8 x 30.5cm)
£400-£600



121. Richard Whitford (c.1821-1890) British

"A Break From The Shoot", a portrait of William Crowther standing with ponies (Tommy and Mischief), and whippet in a meadow by a river, a wooded landscape beyond, with a distant view towards a tower

Oil on canvas

Signed, inscribed dated 1855

28" x 36" (71.1 x 91.5cm)

Provenance: William Crowther Esq; by descent to Henry Lucy Sowden Esq, Leamington Spa; Brigadier Col. Henry Neville Sowden; Neville R B Sowden Esq
£1000-£1500



122. Mick Cawston (1959-2006) British
Chasing the Hare
Oil on canvas
Signed
16" x 20" (40.6 x 50.8cm)
£300-£400



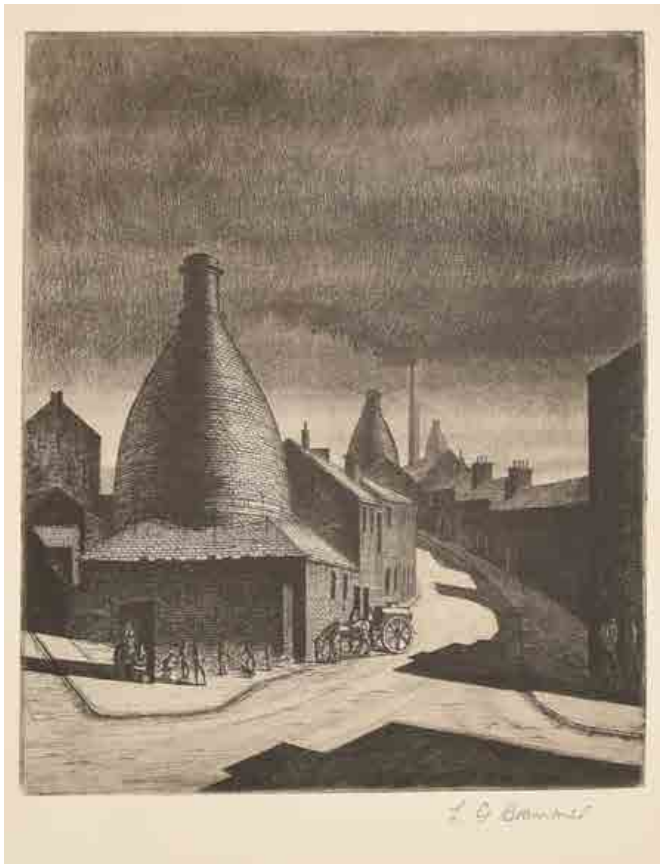
123. Malcolm Coward (1948-) British
Gypsy Cobs
Oil on canvas
Signed
18" x 24" (45.7 x 61cm)
£400-£600

124. John Trickett (1952-) British
The Stag
Oil on canvas
Signed
16" x 20" (40.6 x 50.8cm)
£500-£700

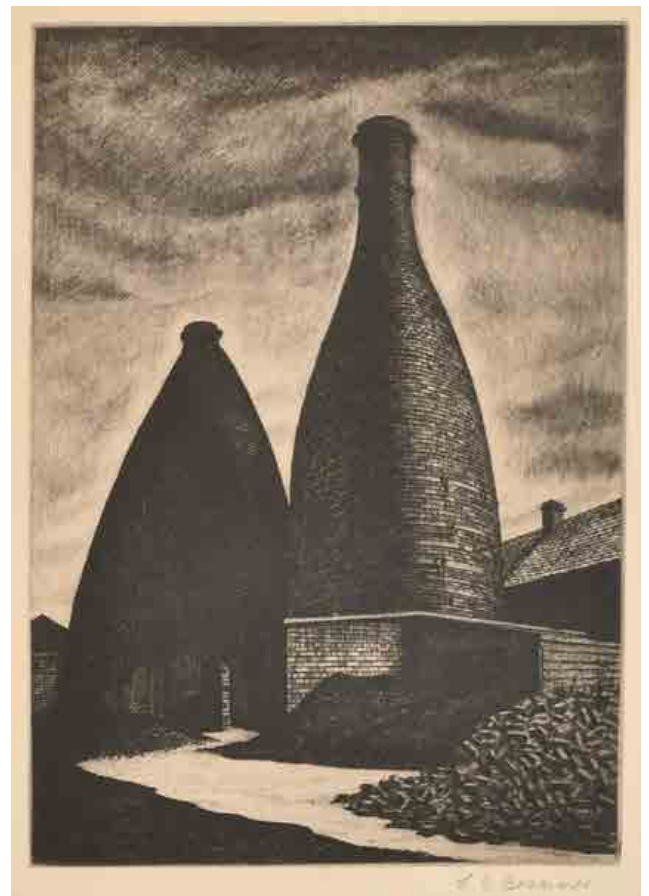


125. John Trickett (1952-) British
A Labrador Waiting in a Winter Landscape
Oil on canvas
Signed
20" x 24" (50.8 x 61cm)
£800-£1200

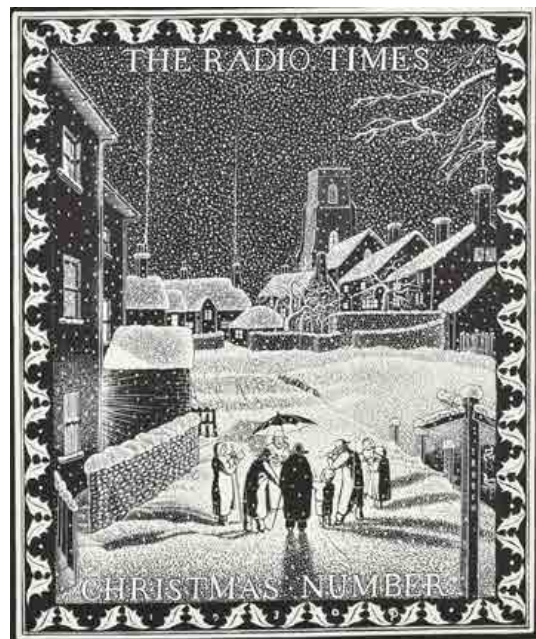
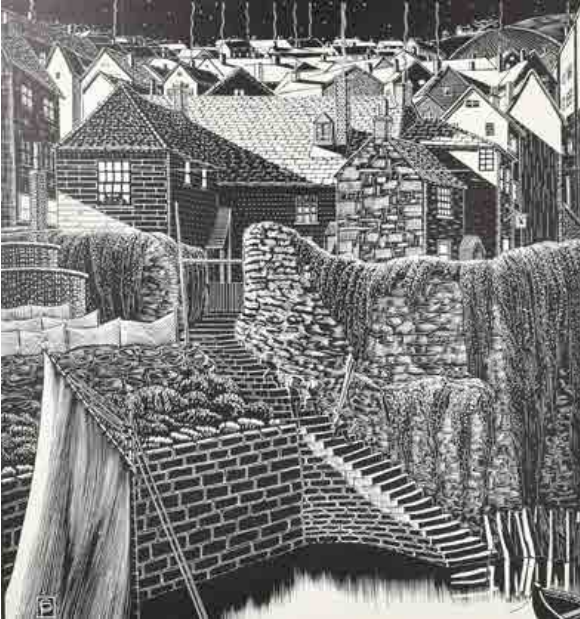
British and European Paintings Post 1900



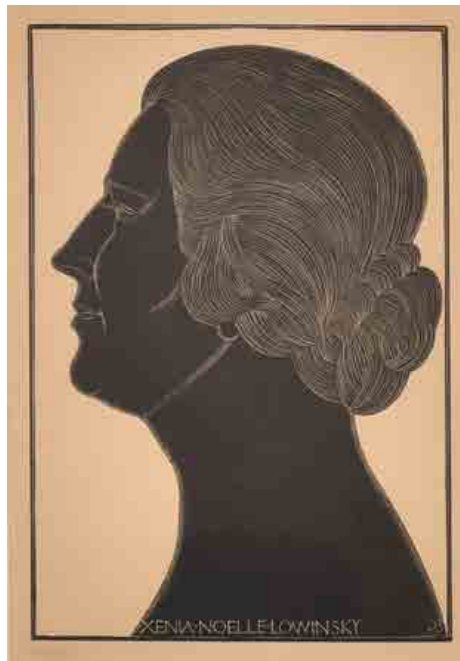
126. Leonard Griffith Brammer (1906-1994) British
"Street Scene, Five Towns"
Etching
Signed in pencil
7.85" x 6.5" (20 x 16.5cm)
£200-£300



127. Leonard Griffith Brammer (1906-1994) British
"Wedgewood Etruria - Old & New China Ovens (Bottle Kilns)"
Etching
Signed in pencil
9.65" x 6.75" (24.5 x 17.2cm)
£200-£300



128. Cloughton Pellew (1890-1966) British
A Set of Five Wood Engravings
"Marsh Marigolds, 1930", "The Carol Singers, 1930",
"The Smithy, 1930", "The Mother, 1931", and "The Return, 1925"
Contained in the original portfolio box (with booklet)
Unframed (various sizes) (5)
£200-£300



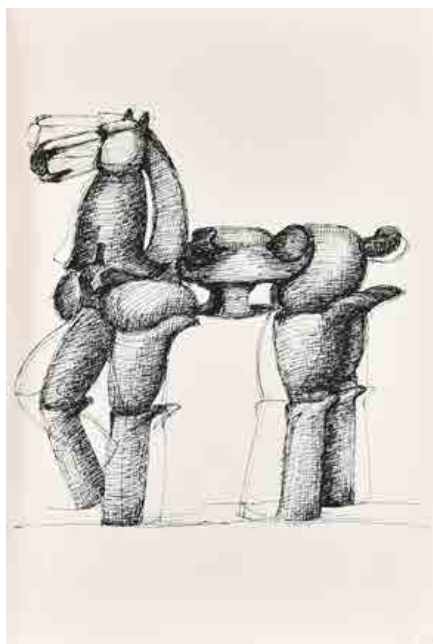
129. **Eric Gill (1882-1940) British**
 Portrait of Thomas Esmond Lowinsky
 Wood engraving
 Inscribed on a label verso
 10.5" x 7.5" (26.8 x 19cm)
 And the companion piece, his wife Xenia Nelle Lowinsky, a pair (2)
 Provenance: Sally Hunter Fine Art, London; Julian Critchley Esq, December 1989
£200-£300



130. **Wilhelm Heise (1892-1965) German**
 "Glockenblume"
 Engraving
 Signed and inscribed in pencil
 Unframed 13.5" x 9.75" (34.3 x 24.8cm)
£100-£150



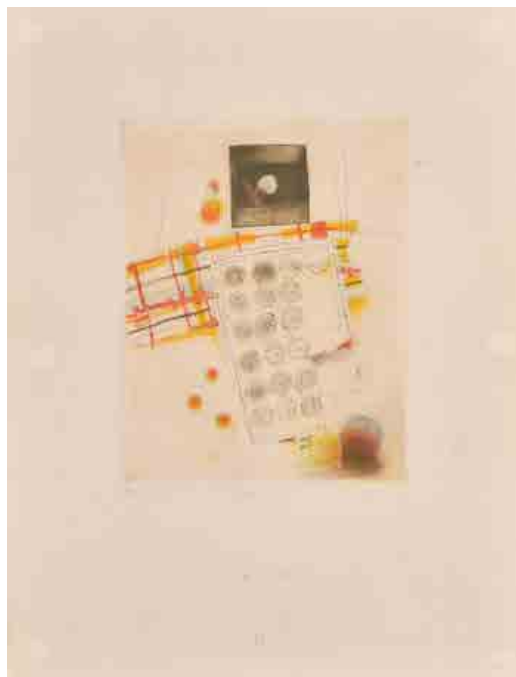
131. **Hiroshi Yoshida (1876-1950) Japanese**
 "Toshogu Shrine"
 Woodcut
 With artist's stamp
 14.5" x 9.5" (36.8 x 24.1cm)
£100-£150



132. Jamian Juliano-Villani (1987-) American
 "Portfolio of five prints"
 Silkscreen
 Signed with initials and numbered 7/20 in pencil
 Unframed 36" x 24" (91.5 x 61cm)
 Provenance: Artist; Frieze, London 2018 (5)
 £200-£300



133. John Hall Thorpe (1874-1947) Australian
"Pansies and Nasturtiums"
Lithograph
Signed in pencil
7" x 6.5" (17.8 x 16.5cm)
£100-£150



134. Chloe Cheese (1952-) British
"Buttons"
Etching in colours
Signed, inscribed and numbered 16/100
13.5" x 10.5" (34.3 x 26.7cm)
£100-£150



135. Keith Haring (1958-1990) American
"Andy Mouse", 1989
Lithograph
Unframed (overall) 31.5" x 23.5" (80 x 59.7cm)
£100-£150



136. After Pablo Picasso (1881-1973) Spanish
"Les Pigeons"
Print
Unframed 47.25" x 35.25" (120 x 89.5cm)
£100-£200



137. Jenny Saville (1970-) British
"Separates"
Lithograph in colours
Signed and numbered 86/100 in pencil
Unframed 27" x 37" (68.6 x 94cm)
£800-£1200



138. Bob Dylan (1941-) American

“Cactus”

Giclee

Signed and numbered 250/295 in pencil, contained in the original sleeve

Unframed 16.3” x 24” (41.5 x 61cm)

Provenance: Washington Green Fine Art

Notes: From the Retrospectrum Collection (Autopen Edition, 2022) published by Washington Green
£800-£1200



139. Bob Dylan (1941-) American

“Train Tracks On The Beach”

Giclee

Signed and numbered 250/295 in pencil

Contained in the original sleeve

Unframed 16.3” x 24” (41.5 x 61cm)

Provenance: Washington Green Fine Art

Notes: From the Retrospectrum Collection (Autopen Edition, 2022) published by Washington Green
£800-£1200



140. Bob Dylan (1941-) American

"Memphis At Night"

Giclee

Signed and numbered 250/295 in pencil

Contained in the original sleeve

Unframed 16.3" x 24" (41.5 x 61cm)

Provenance: Washington Green Fine Art

Notes: From the Retrospectrum Collection (Autopen Edition, 2022) published by Washington Green

£800-£1200



141. **Beryl Cook (1926-2008) British**
 "Bridge Party"
 Lithograph
 Signed and numbered 569/650 in pencil
 14" x 18.5" (35.5 x 47cm)
 £100-£200



142. **Cathie Pilkington (1968-) British**
 "Night Studio"
 Etching with blind stamp
 Signed, inscribed, dated 2017 and numbered 1/7 in pencil
 9" x 12" (23.2 x 30cm)
 £100-£150

143. **Pitseolak Ashoona (1904-1983) Canadian**
 "The Kayak (Kayak and Family), 1962"
 Stonecut
 Signed, inscribed and numbered 1/50 in pencil
 17.5" x 25.5" (44 x 64.8cm)
 £100-£150



144. **Mark King (1931-2014) British**
 "By The Sea"
 Serigraph
 Signed and numbered 244/1000 in pencil and marked with a blindstamp, and inscribed on a label verso
 15" x 20" (38.1 x 50.8cm)
 And a companion piece, "Rainy Day", a pair (2)
 Provenance: Martin Lawrence Limited Editions Inc, America
 £100-£200



145. After Francis Bacon (1909-1992) British
 "Georges a Bicyclette"
 Lithograph
 Edition of 500 published by Maeght and printed by Arte, Paris
 Unframed (overall) 33.25" x 25.5" (84.5 x 64.8cm)
 Together with two other Bacon posters (3)
 £150-£200



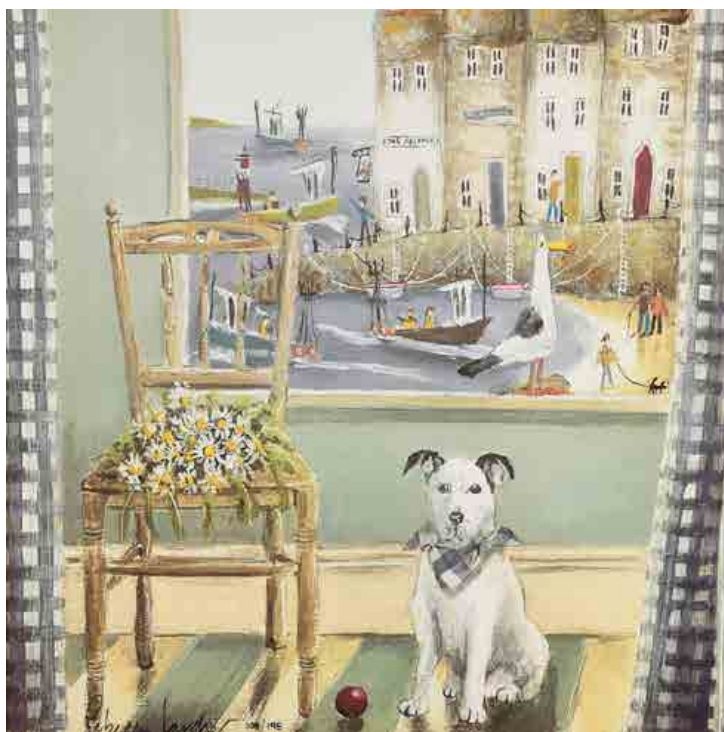
146. After Roy Lichtenstein (1923-1997) American
 "Still Life with Picasso"
 Los Angeles Museum of Art Exhibition poster
 Unframed (overall) 37.5" x 26.6" (95.2 x 67.6cm)
 £150-£200



147. After Roy Lichtenstein (1923-1997) American
 "Art"
 Poster for American Federation of Arts 80th Anniversary
 Unframed (overall) 26.15" x 39.25" (66.3 x 99.7cm)
 £150-£200



148. Rebecca Lardner (1971-) British
 "Early Birds"
 Giclee print
 Signed and numbered 58/195
 In a box frame
 23.75" x 9.5" (60.3 x 43.1cm)
 £100-£150



149. Rebecca Lardner (1971-) British
 "Fisherman's Friend"
 Giclee print
 Signed and Numbered 108/195
 17" x 17" (43.1 x 43.1cm)
 £100-£150

150. 20th Century English School
 "West Cliff Brighton looking towards Shoreham"
 Pencil
 Inscribed and Dated Oct 2nd 1884
 Unframed 9.5" x 15" (24.2 x 38cm)
 Contained in an Album with seventeen other Watercolours
 and Drawings relating to Brighton and Hampstead by the
 same hand (18)
 £200-£300



151. Early 20th Century English School
 Figures on a Promenade at Dusk
 Watercolour
 Indistinctly signed
 4.5" x 7.25" (11.4 x 18.3cm)
 £200-£300



152. David Low (1891-1963) New Zealander
 "Oath of Loyalty to Hitler", with Mickey Mouse climbing the stilt
 Ink and crayon heightened with white
 Signed and inscribed
 12.5" x 18" (31.7 x 45.7cm)
 £200-£400



153. Early 20th Century Chinese School
A Set of Twelve Full Length Portraits
Watercolour and gold paint on rice paper
9.25" x 6.25" (23.5 x 15.8cm) (12)
£100-£200



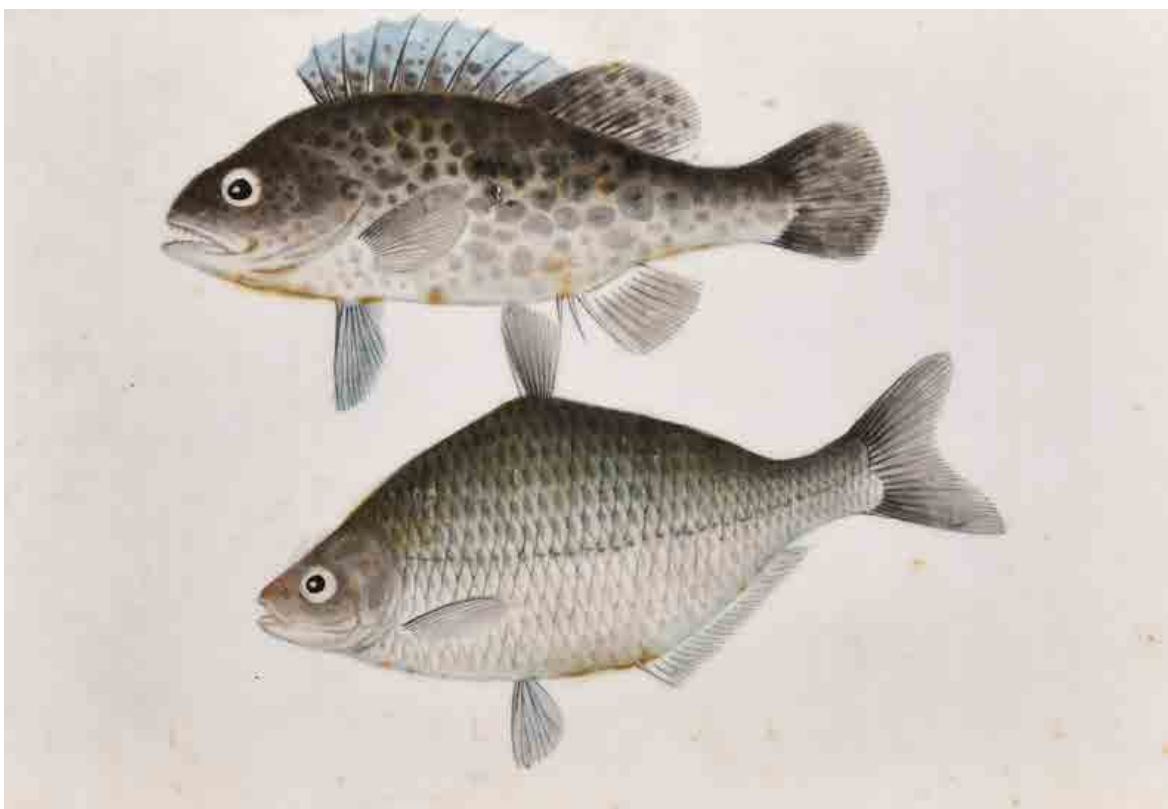
154. Early 20th Century Chinese School
A Pair of Bird Studies
Watercolour on rice paper
7.5" x 12.25" (19 x 31.1cm)
And three other similar works by various hands (5)
£100-£200



155. Early 20th Century Chinese School
A Pair of Still Life
Watercolour on rice paper
6.5" x 10.5" (16.5 x 26.7cm)
And four other still life studies by various hands (6)
£100-£200



156. Early 20th Century Chinese School
 Interior with Figures
 Watercolour on rice paper
 6.75" x 13.25" (17.2 x 33.7cm)
 Together with a still life of fruit by another hand (2)
 £100-£200



157. Early 20th Century Chinese School
 Study of Fish
 Watercolour and silver paint on rice paper
 7.5" x 11.25" (19 x 28.6cm)
 £100-£200



158. Robert Sargent Austin (1895-1973) British
 Female Nude
 Pencil
 Signed and dated 26 Nov 1947,
 and inscribed on labels verso
 18" x 12.5" (45.7 x 31.7cm)
 Provenance: Liss Fine Art
 Exhibited: The Fine Art Society, 2002, No.49
£100-£200



159. Robert Sargent Austin (1895-1973) British
 A Reclining Nude
 Charcoal
 Dated 14 July 1937 (twice)
 16" x 21.25" (40.6 x 54cm)
 Provenance: Royal Exchange Art Gallery, London
£100-£200



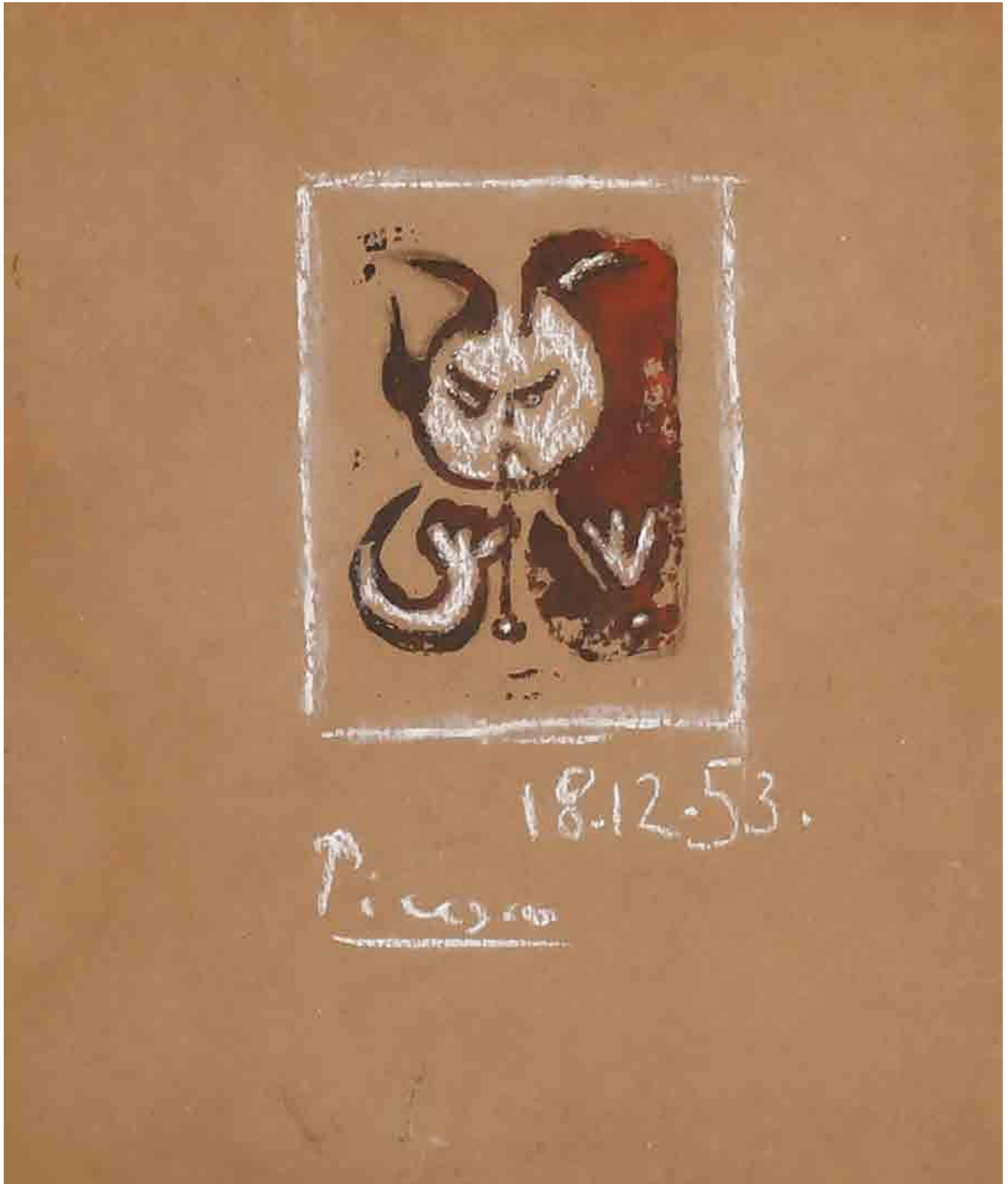
160. Emily Murray Paterson (1855-1934) British
 A Coastal Scene
 Watercolour
 Signed
 8" x 12.5" (20.3 x 31.7cm)
 And companion piece, a pair (2)
£100-£200



161. John Augustus Atkinson (1775-1830) British
 'Skittles'
 Watercolour
 Inscribed on the mount
 7.5" x 11" (19.1 x 27.9cm)
£80-£120



162. Circle of Emile Claus (1849-1924) Belgian
 Waiting for the Ferry
 Pastel
 Inscribed verso
 6" x 11" (15.2 x 27.8cm)
£100-£150



163. Studio of Pablo Picasso (1881-1973) Spanish

'Faune Musicien'

Chalk

Bears a signature and dated 18.12.53

8.85" x 7.6" (22.5 x 19.4cm)

£8000-£12000



164. **Henry George Rushbury (1889-1968) British**
 "Titterstone Quarry, Shropshire"
 Watercolour
 Signed and dated 1918, and inscribed on a label verso
 8.5" x 13.5" (21.6 x 34.2cm)
£80-£120



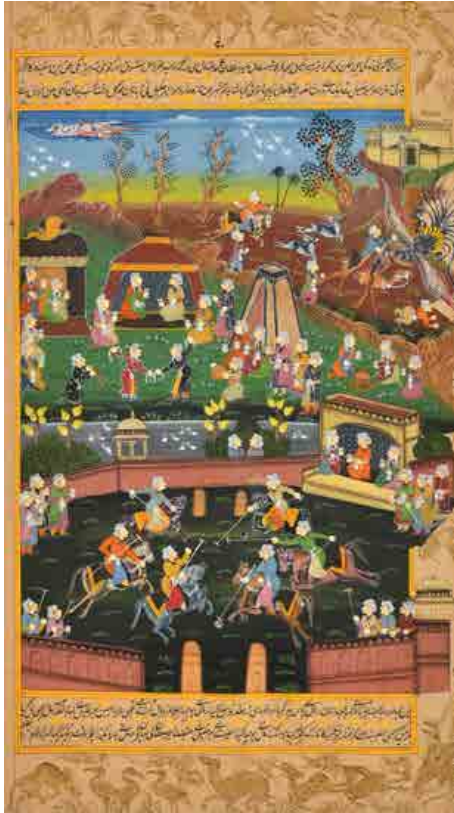
165. **20th Century European School**
 Horse and Cart
 Mixed media
 9.75" x 13.25" (24.7 x 33.7cm)
£100-£200



166. **William Mark Fisher (1841-1923) British**
 A Riverside Path
 Watercolour
 Signed, and inscribed on a label verso
 12" x 16" (30.5 x 40.6cm)
 Provenance: Leicester Galleries
£120-£180



167. **William Samuel Horton (1865-1936) American**
 "Valley Landscape, with trees in the foreground"
 Pastel
 17.5" x 21" (44.4 x 53.3cm)
 Provenance: Chiswick Auctions, 8th November 2022, Lot 287
£200-£300



168. Early 20th Century
Indo-Persian School
A Polo Match
Watercolour, gouache and gold paint
Inscribed
15.75" x 9" (40 x 22.9cm)
Together with an Indian hunting scene
Unframed 12" x 8.75"
(30.5 x 22.2cm) (2)
£100-£200



169. 20th Century Indian School
A Portrait of a Man, believed to be Maharaja Ranjit Singh
Pencil
14.5" x 11" (36.8 x 27.9cm)
Together with a 19th Century watercolour of an Indian deity
Unframed 14.75" x 10.5" (37.4 x 26.7cm) (2)
£100-£200



170. Alfred Reginald Thompson (1894-1979) British
Study of a Lady
Sanguine
Signed in pencil
16.5" x 13.25" (42 x 33.6cm)
£100-£150



171. 20th Century English School
A Seated Lady holding a fan
Watercolour and gouache
Oval 14" x 10" (35.5 x 25.4cm)
£100-£150

172. Douglas Gershue (20th Century) British
 'Tug Boat Leaving Dock'
 Watercolour
 Signed, inscribed and dated 1956
 10" x 10.75" (25.4 x 27.3cm)
 £100-£200



173. Frank Egginton (1908-1990) British
 "After Rain, Lettergesh, Connemara"
 Watercolour
 Signed, and inscribed verso
 14.75" x 21" (37.4 x 53.3cm)
 £100-£200



174. Henry Inlander (1925-1983) Austrian/British
 "Coastline Anticoli (Italy)"
 Bodycolour
 Signed, and inscribed on a label verso
 14" x 20.5" (35.5 x 52.1cm)
 Provenance: Wenlock Fine Art, Shropshire
 £100-£150

175. **Josef Herman (1911-2000) Polish/British**
 "Sundown at Sea"
 Oil on canvas
 Signed and dated 1964 verso, and inscribed on a label verso
 10" x 12" (25.4 x 30.5cm)
 Provenance: Roland, Browse and Delbanco, London
 £600-£800



176. **Josef Herman (1911-2000) Polish/British**
 Mother and Child on the Shore
 Watercolour, ink and pencil
 7.75" x 9.75" (19.7 x 24.7cm)
 £500-£700



177. **Josef Herman (1911-2000) Polish/British**
 A Seated Figure
 Watercolour
 Ink and pencil
 5.75" x 7" (14.6 x 17.7cm)
 £300-£500





178. **John Sergeant (1937-2010) British**
 Study for the cover of 'Of Illustrious Men' by Jean Rouaud
 Watercolour
 Signed with motif and dated 1994, and inscribed on a label verso
 11.75" x 16" (29.8 x 40.6cm)
 Exhibited: Hazlitt, Gooden & Fox, 'John Sergeant: Drawings', 20 October-29 November 1996, no.14
 £100-£200



179. **John Sergeant (1937-2010) British**
 Study for the cover for 'Fields of Glory' by Jean Rouaud
 Watercolour
 Signed with motif and dated 1991, and inscribed on a label verso
 11.75" x 16" (29.8 x 40.6cm)
 Exhibited: Hazlitt, Gooden & Fox, 'John Sergeant: Drawings', 20 October-29 November 1996, no.13
 £100-£200



180. Patrick Procktor (1936-2003) British

"Queen of Spades"

Watercolour

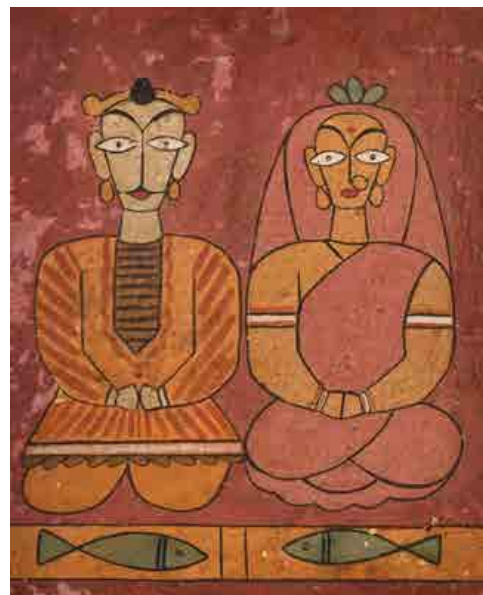
Signed and dated '64 in pencil, and inscribed on labels verso

14" x 10" (35.5 x 25.4cm)

Provenance: The Redfern Gallery Ltd, London; Richard Reid Esq, 6 May 1965; thence by family descent

£800-£1200

181. Circle of Jamini Roy (1887-1972) Indian
Figure Holding an Oil Lamp
Gouache
Bears a signature
9" x 6.85" (22.8 x 17.5cm)
And another of two seated figures (2)
£100-£200



182. Edward Ardizzone (1900-1979) British
The Plea
Ink and wash
Signed 'Diz'
7.5" x 4.25" (19.1 x 10.7cm)
£300-£400



183. Attributed to David Hockney (1937-) British
Study for 'A Rake's Progress'
Watercolour and ink
19.25" x 15.25" (48 x 38.7cm)
Provenance: Bought by the current owner from Kasmin Gallery, Cork Street, London (1960's)
£6000-£8000



184. **John Napper (1916-2001) British**

"Leicester Square"

Pencil

Signed, inscribed with title and 'For Julian Critchley, with best wishes' and dated 1953

4" x 6.4" (10.2 x 16.2cm)

£80-£120



185. **John Napper (1916-2001) British**

"Sainte Anne la Palud"

Watercolour

Signed with initials, inscribed and dated 1998, and inscribed on a label verso

7" x 10.15" (17.8 x 25.8cm)

£50-£80



186. **John Napper (1916-2001) British**

"Landscape with Flying Birds"

Watercolour

Signed with initials and dated 1998, and inscribed on a label verso

11.25" x 12.65" (28.7 x 32.1cm)

£80-£120



187. **John Napper (1916-2001) British**

"Winter"

Watercolour

Signed with initials and dated 1995, and inscribed on a label verso

10.5" x 14.15" (26.7 x 35.8cm)

Notes: From the series '37 Views of Clee Hill', No.38

£200-£300

188. **John Napper (1916-2001) British**

"A Sudden Shower"

Watercolour

Signed with initials and dated 1992, and inscribed on a label verso
10.25" x 14.25" (26 x 36.1cm)

Notes: From the series '37 Views of Clee Hill'

£300-£400



189. **John Napper (1916-2001) British**

"Cat at Window"

Watercolour

Signed with initials and dated 1992, and inscribed on a label verso
10.5" x 14" (26.7 x 35.5cm)

Notes: From the series '37 Views of Clee Hill', No.10

£200-£300



190. **John Napper (1916-2001) British**

"Woman Reading"

Watercolour

Signed with initials and dated 1993, and inscribed on a label verso
10.5" x 14" (26.7 x 35.5cm)

Notes: From the series '37 Views of Clee Hill'

£300-£400





191. **John Napper (1916-2001) British**
 "White Bridge"

Watercolour

Signed with initials and dated 1992, and inscribed on a label verso
 10.25" x 14.15" (26 x 35.8cm)

Notes: From the series '37 Views of Clee Hill', No.2

£200-£300



192. **John Napper (1916-2001) British**
 "Miniskirt"

Watercolour

Signed with initials and dated 1993, and inscribed on a label verso
 10.25" x 14" (26 x 35.5cm)

Notes: From the series '37 Views of Clee Hill', No.20

£200-£300



193. **John Napper (1916-2001) British**
 "Level Crossing"

Watercolour

Signed with initials and dated 1993, and inscribed on a label verso
 10.5" x 14.15" (26.7 x 35.8cm)

Notes: From a series '37 Views of Clee Hill', No.24

£150-£250



194. **John Napper (1916-2001) British**
 "Motor Car"

Watercolour

Signed with initials and dated 1993, and inscribed on a label verso
 10.5" x 14.15" (26.7 x 35.9cm)

Notes: From a series '37 Views of Clee Hill', No.21

£150-£250



195. **John Napper (1916-2001) British**
 "Long Distance Conversation Piece"
 Oil on canvas
 Signed and dated 1983, and inscribed on a label verso
 40" x 30" (101.7 x 76.2cm)
 Notes: Believed to be of his wife Pauline (nee Davidson)
£2500-£3500



196. Martyn Jones (1955-) British
 "Atelier-Aquifer"
 Watercolour
 Signed, inscribed and dated 2015 in pencil
 5.75" x 8.25" (14.6 x 21cm)
 And the companion piece "Cobnor Shoreline", a pair (2)
 £100-£200



197. Martyn Jones (1955-) British
 "Christmas Eve Early"
 Watercolour
 Signed, inscribed and dated 2013 in pencil
 4" x 4" (10.2 x 10.2cm)
 And three others "Aeon-Rain Vernal",
 "Rackton Tower, August" and "Halcyon Blunge V"
 A set of four (4)
 £100-£200



198. Martyn Jones (1955-) British
"Zavijava"
Oil on canvas
Signed, inscribed and dated 2016 verso
15.5" x 15.5" (39.4 x 39.4cm)
And the companion piece "Zavijava II", a pair (2)
£100-£200



199. Martyn Jones (1955-) British
"Turning Year VI"
Oil on canvas
Signed, inscribed and dated 2017 verso
39.75" x 39.75" (101 x 101cm)
£100-£200



200. Martyn Jones (1955-) British
"Silent Winter IV"
Oil on paper
Signed, inscribed and dated 2016 in pencil
19.75" x 27.75" (50.2 x 70.5cm)
£100-£200



201. Martyn Jones (1955-) British
"Halycon Blunge"
Oil on paper
Signed, inscribed and dated 2012 in pencil
20" x 27.5" (50.8 x 69.8cm)
£100-£200



202. Martyn Jones (1955-) British
"Porthmelgan"
Acrylic on canvas
Signed, inscribed and dated 2018 in pencil verso
Unframed 39.25" x 47" (99.7 x 119.3cm)
£100-£200



203. Martyn Jones (1955-) British
"Monnickendam,
Hidden Place"
Acrylic on canvas
Signed, inscribed and dated 2007
in pencil, and signed, inscribed
and dated verso
60" x 40" (152.3 x 101.6cm)
£150-£250



204. Martyn Jones (1955-) British
 "Aquifer VIII"
 Oil on canvas
 Signed and inscribed verso
 Unframed 78" x 78" (198.1 x 198.1cm)
 And companion piece, a pair (2)
 £200-£300



205. **Molly Bishop (1911-1998) British**
Head Study of a Boy
Sanguine and chalk
Signed and dated 1956
15.75" x 11.75" (40 x 30cm)
£100-£200



206. **Unity Spencer (1930-2017) British**
"William Spencer, Pianist"
Pencil
Signed and dated 1949, and inscribed verso
7.6" x 9.6" (19.4 x 24.4cm)
£100-£200



207. **Thorn (20th Century) British**
A Brawl
Mixed media
Signed
Mounted, unframed 12.25" x 9.25" (31.1 x 23.5cm)
£100-£200



208. **Attributed to George Hooper (1910-1994) British**
Still Life on a Table
Gouache
Signed
18.25" x 14" (44.4 x 35.5cm)
£100-£200



209. **Arthur E Pope (1880-1974) British**
 Figures in a Courtyard, possibly Bray Almshouses
 Oil on canvas
 Signed
 Unframed 20" x 30" (50.8 x 76.2cm)
 £200-£300



210. **Vernon Ward (1905-1985) British**
 Still Life of Flowers in a Vase
 Oil on canvas
 Signed
 20" x 30" (50.8 x 76.2cm)
 £200-£300



211. **Erna Hoppe Kinross (1878-1964) German/British**
 "Portrait of Charles"
 Oil on artist's board
 Inscribed on a label verso and dated 1910
 10" x 14.25" (25.2 x 36.2cm)
 £150-£200

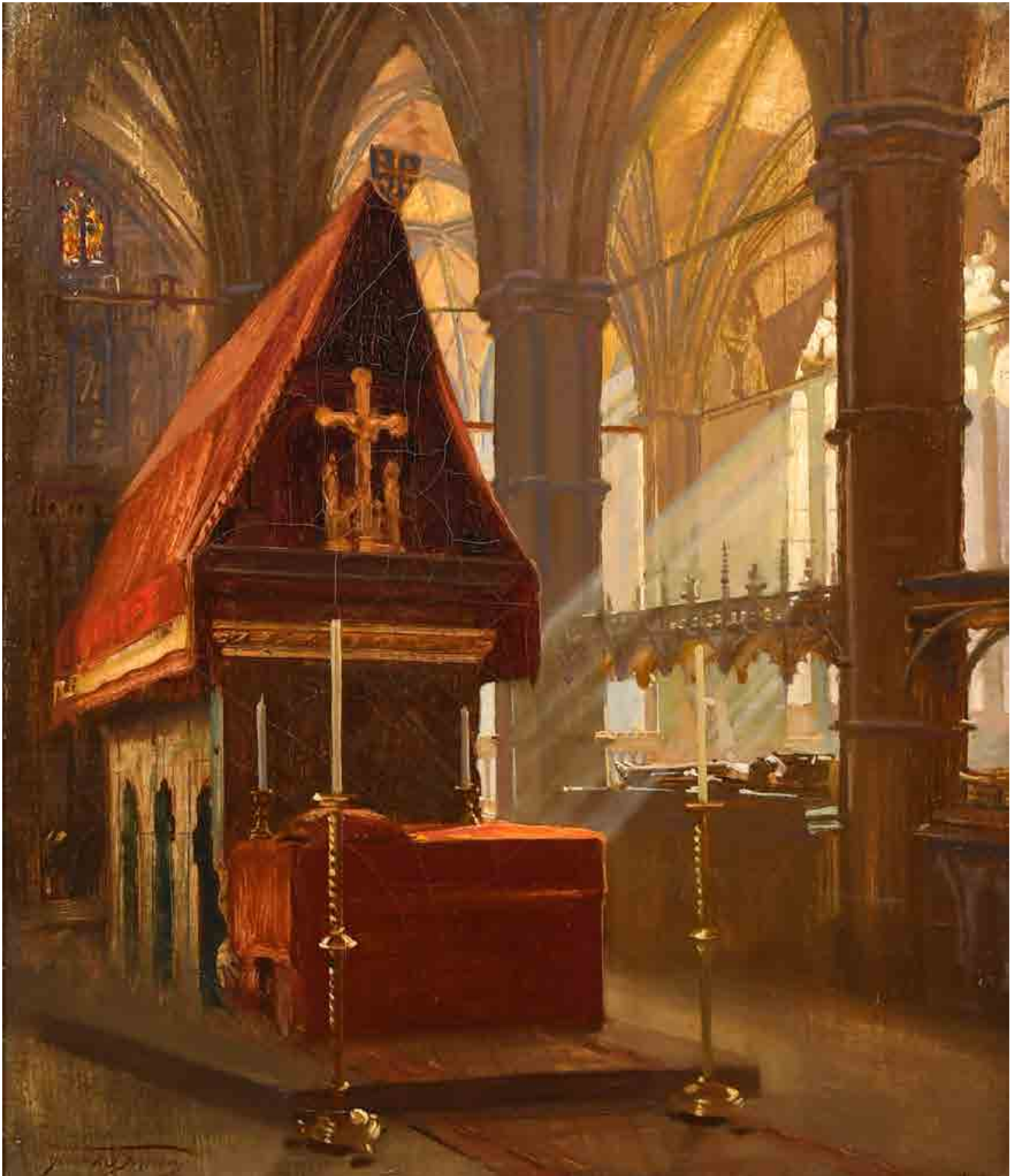


212. Maurice Alfred Descamps (1892-1953) French
 'A Village in Provence, Cote d'Azur'
 Oil on canvas
 Signed
 21.25" x 25.5" (54 x 64.7cm)
 £600-£800

213. **Wilfred Fairclough (1907-1996) British**
 "Eel Pie Island, Twickenham"
 Oil on board
 Signed and dated 1951, and inscribed on labels verso
 19.75" x 24" (50.2 x 61cm)
 Exhibited: Atkinson Art Gallery, Southport, 1957;
 Royal Society of Arts, 1959
 Provenance: From the artist's family
£300-£400



214. **Wilfred Fairclough (1907-1996) British**
 "The Green Pool, Richmond"
 Oil on board
 Signed and dated 1952, and inscribed verso and
 inscribed on labels verso
 17" x 21.75" (43.2 x 55.3cm)
 Exhibited: Southport, 1956
 Provenance: From the artist's family
 Notes: This depicts the Ham River Grit Company
 gravel ponds which were used to rebuild London
£300-£400



215. **Frank Owen Salisbury (1874-1962) British**
 "Edward the Confessor's Chapel, Westminster Abbey"

Oil on canvas

Signed, and inscribed verso

30" x 25" (76.2 x 63.5cm)

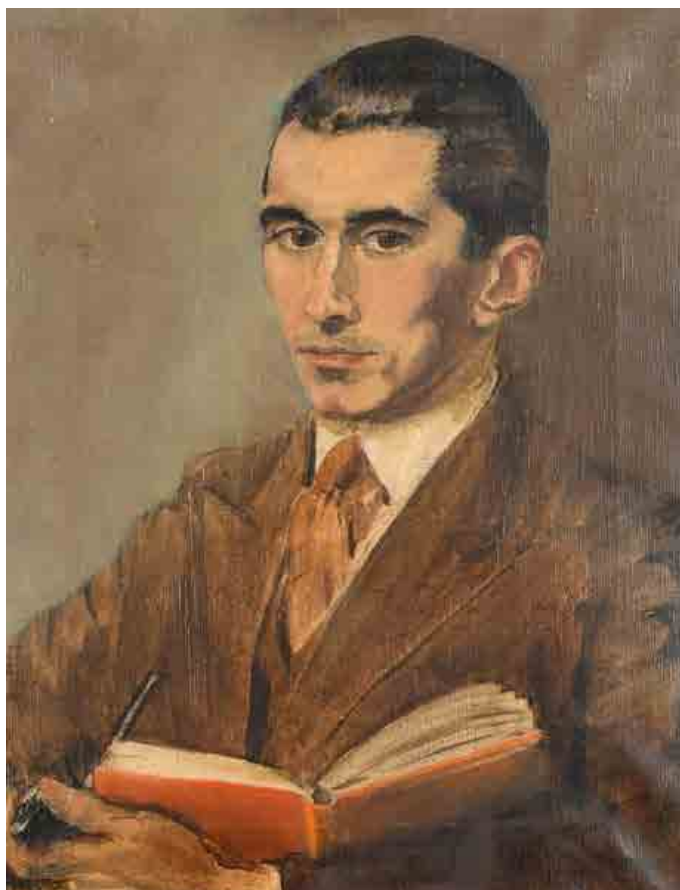
Provenance: Christie's, 25th September 1986, Lot 138 (sold with catalogue)

Notes: This is believed to be a study for the final work of 'HRH The Princess Royal signing the register in the Vestry at Westminster Abbey February 18th 1922' in the collection at Harewood House

£600-£800



216. After Maurice Greiffenhagen (1862-1931) British
 "An Idyll"
 Oil on canvas
 30" x 15" (76.2 x 38.1cm)
 £200-£400



217. Margaret Day (19th-20th Century) British
 Portrait of Sidney Morgan
 Oil on canvas
 Signed, and inscribed on labels verso
 20" x 16" (50.8 x 40.6cm)
 £200-£400



218. Noel Georges Bouvard (1912-1975) French
A Venetian Canal Scene
Oil on canvas
Signed
19.5" x 25.5" (49.5 x 64.8cm)
£2500-£3500



219. **Frank Moss Bennett (1874-1953) British**
The Artist Admiring his Work
 Oil on canvas
 Signed and dated 1915
 14" x 16" (35.5 x 40.6cm)
£600-£800



220. **David Murray (1849-1933) British**
"Upper Park, Dedham"
 Oil on canvas
 Signed and dated 91
 24" x 36" (61 x 91.5cm)
£500-£700



221. **Robert Lutyens (1901-1971) British**
"Above Grimaud"
 Oil on board
 Signed and dated on the mount, and inscribed on a label verso
 4.75" x 6.5" (12 x 16.5cm)
£100-£150



222. **Antoine Blanchard (1910-1988) French**
 A Winter Parisian Street Scene, with Notre Dame in the distance
 Oil on canvas
 Signed
 18" x 21.5" (45.7 x 54.6cm)
 £2000-£3000

223. **David Dipnall (1941-2023) British**
A Surrey Country Lane
 Oil on canvas
 Signed
 30" x 36" (76.2 x 91.5cm)
£200-£300



224. **David Dipnall (1941-2023) British**
A Misty Morning
 Oil on canvas
 Signed
 20" x 40" (50.8 x 101.6cm)
 Provenance: Fareham Gallery, 1979
£200-£300



225. 20th Century French School
The Drinker
Oil on canvas
Indistinctly signed
18" x 21.75" (45.7 x 55.3cm)
£800-£1200



226. **James Fry (1911-1985) British**
 “The Purbeck Hills from Studland Beach”
 Oil on board
 Signed with initials, and signed and
 inscribed verso
 10” x 12” (25.4 x 30.5cm)
£300-£400



227. **James Fry (1911-1985) British**
 “Near Goathorn”
 Oil on artist’s board
 Signed with initials, and signed and
 inscribed verso
 8” x 16” (20.3 x 40.6cm)
£300-£400

228. **James Fry (1911-1985) British**
 "Looking West from Houns Tout"
 Oil on artist's board
 Signed with initials, and signed and
 inscribed verso
 8" x 12" (20.3 x 30.5cm)
 £400-£600



229. **James Fry (1911-1985) British**
 "The Coast at Winspit"
 Oil on board
 Signed with initials, and signed and
 inscribed verso
 6" x 12" (15.3 x 30.5cm)
 £400-£600



230. Konstantin Razumov (1974-) Russian
 "Evening Lights"
 Oil on canvas
 Signed in Cyrillic, and signed and inscribed in Cyrillic verso
 18.25" x 13" (46.4 x 33cm)
 £2500-£3500



231. Konstantin Razumov (1974-) Russian

"In the Garden"

Oil on canvas

Signed in Cyrillic, and signed and inscribed in Cyrillic verso

15.75" x 20" (40 x 50.8cm)

£2000-£3000



232. Petrovitch Tchouprina
(1928-1986) Russian
"Talk"
Oil on board
Signed in Cyrillic and dated
'61, and inscribed verso
15.75" x 12" (40 x 30.5cm)
£100-£150



233. Boris Mikhailovitch Lavrenko (1920-2011) Russian
"Wild Beach in Gurzuf, Crimea"
Oil on board
Signed in Cyrillic and dated '60, and inscribed in Cyrillic verso
13.75" x 9.5" (35 x 25.2cm)
£100-£150



234. Viktor Fedorovitch Vassine (1919-1997) Russian
"Sailboats off the Coast"
Gouache
Signed and inscribed in Cyrillic, with a sketch of cyclists verso
11" x 13.75" (27.8 x 34.8cm)
£100-£150



235. Petrovitch Tchouprina (1928-1986) Russian
"The Ship is at Full Speed"
Oil on board
Signed in Cyrillic and dated '61, and inscribed verso
11.5" x 15.5" (29.2 x 39.3cm)
£100-£150

236. Serguei Zouiev (1961-) Russian
"Lenin"

Oil on canvas
Signed in Cyrillic, and signed, inscribed and dated 1992
in Cyrillic verso
38.5" x 41.5" (97.8 x 105.4cm)
£150-£250



237. Serguei Zouiev (1961-) Russian
"Bathing"

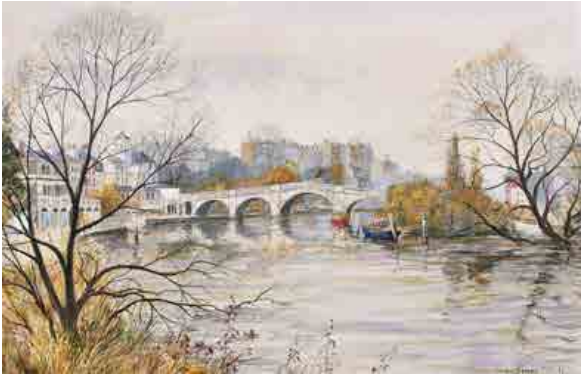
Oil on canvas
Signed in Cyrillic, and signed, inscribed and dated 1990
in Cyrillic verso
37.5" x 44" (95.2 x 111.7cm)
£150-£250



238. Viktor Alexandrovich Tsvetkov (1920-) Russian
"The Wrong Answer"

Oil on canvas
Signed in Cyrillic, and signed, inscribed and dated 1967
in Cyrillic verso
37" x 51.25" (94 x 130cm)
£400-£600





239. **Jeremy King (1933-2020) British**
 "Richmond Bridge"
 Oil on board
 Signed and dated '83, and inscribed verso
 16" x 24" (40.6 x 61cm)
£100-£200



240. **Madha Powle (20th Century) Indian**
 Two Figures
 Oil on canvas
 Signed and dated '65, and inscribed verso
 23" x 28.5" (58.4 x 72.4cm)
£100-£200



241. **Keith Baynes (1887-1977) British**
 Sailing Boats on a River
 Oil on board
 Signed
 13" x 16" (33 x 40.6cm)
£100-£200



242. **Leonard Applebee (1914-2000) British**
 "Afon Croeser"
 Oil on canvas
 Signed, and inscribed on a label verso
 20" x 30" (50.8 x 76.2cm)
 Provenance: Howard Roberts Gallery, Cardiff
£100-£200



243. **Ronald Morgan (1936-2019) British**
 'Piano Concerto'
 Oil on board
 Signed and dated 2001, and inscribed on a label verso
 9" x 12" (22.8 x 30.5cm)
 Exhibited: The Sheen Gallery, London, December 2004
£100-£150



244. **Viktor Fedorovitch Vassine (1919 - 1997) Russian**
 "South Courtyard"
 Oil on canvas
 Signed in Cyrillic, and signed and inscribed in Cyrillic verso
 25" x 30.5" (63.5 x 77.5cm)
£150-£250

245. **Vernon Ward (1904-1985) British**
 "View of Poole Harbour and Studland Bay"
 Oil on canvas
 Signed and dated '63, and inscribed verso
 16" x 22" (40.6 x 55.9cm)
 £400-£600



246. **John Jobson (1941-) British**
 "Near Aix"
 Oil on panel
 Signed with initials, and inscribed on a label verso
 9" x 12" (22.8 x 30.5cm)
 Provenance: Fosse Gallery, John Lindsey Fine Art Limited,
 Gloucestershire
 £300-£400



247. **Joseph Matar (1935-) Lebanese**
 Harvesting Scene
 Oil on canvas
 Signed and dated '87
 29" x 39.5" (73.7 x 100.3cm)
 £150-£250





248. Attributed to George Chann (1913-1995) Chinese/American
 Untitled
 Mixed media
 Signed, and inscribed verso
 Overall 19" x 15.25" (48.2 x 38.8cm)
 £100-£200



249. Shepherd (20th Century) European
 Abstract Head Studies
 Oil on artist's board
 18" x 13.75" (45.7 x 34.9cm)
 £100-£200



250. Mary Millar Watt (1924-2023) British
 Still Life of Tulips in a Chinese Vase
 Oil on canvas
 Signed in pencil
 20" x 16" (50.8 x 40.6cm)
 Provenance: From the artist's estate
 £100-£200



251. Carlos Sancha (1920-2001) British
 A Family Portrait of Charles, Jane and Camilla Legh in the grounds of Adlington Hall
 Oil on canvas
 Signed and dated 1965
 Unframed 50" x 40" (127 x 101.6cm)
 £100-£200



252. Konstantin Razumov (1974-) Russian

"Walk in a Field of Poppies"

Oil on canvas

Signed in Cyrillic, and signed and inscribed in Cyrillic verso

19.5" x 15.75" (49.5 x 40cm)

£2000-£3000



253. **Christopher Sanders (1905-1991) British**
"Morning Light, Dordrecht"
 Oil on canvas
 Signed, and inscribed on a plaque and inscribed verso
 20" x 24" (50.8 x 61cm)
£300-£500



254. **Stuart Morle (1960-) British**
'Early Morning, Isle of Skye'
 Oil on canvas
 25.75" x 35.75" (65.4 x 91.2cm)
£300-£500



255. **Rossini (20th Century) European**
A Venetian Canal Scene
 Oil on canvas
 Signed
 28" x 40" (71.1 x 101.6cm)
£150-£250



256. **Jim Nicholson (1924-1996) British**
A River Scene
 Oil on board
 Signed, and inscribed on a label verso
 29.5" x 35.5" (74.9 x 90.2cm)
 Provenance: Presented to Miss M G Parker by Council
 members and branches of The Victoria League in Scotland, 23rd January 1977
£200-£300



257. **Timmy Mallett (1955-) British**
"Nighttime Phonebox"
 Oil on board
 Signed, and inscribed on a label verso
 23.75" x 30" (60.3 x 76.2cm)
£700-£1000



258. Attributed to Emmy Bridgwater (1906-1999) British
A Surrealist Figure
Oil on canvas
Unframed 39" x 25" (99.1 x 63.5cm)
£800-£1200



259. Sherree Valentine Daines (1959-) British
"Kite"
Oil on board
Signed with initials (twice)
15.25" x 10.75" (38.7 x 27.3cm)
£2500-£3500



260. Ken Moroney (1949-2018) British
 "Picnic on the Beach"
 Oil on board
 Inscribed on a label verso
 17.75" x 14" (45 x 35.5cm)
 Provenance: Christie's South Kensington, 15th July 1998, lot 150
 £150-£250



261. 20th Century European School
 A Seated Nude
 Oil on board
 24" x 21.25" (61 x 54cm)
 £200-£300



262. Early 20th Century English School
 An Artist and Model
 Oil on canvas
 27" x 22" (68.6 x 55.8cm)
 £500-£700

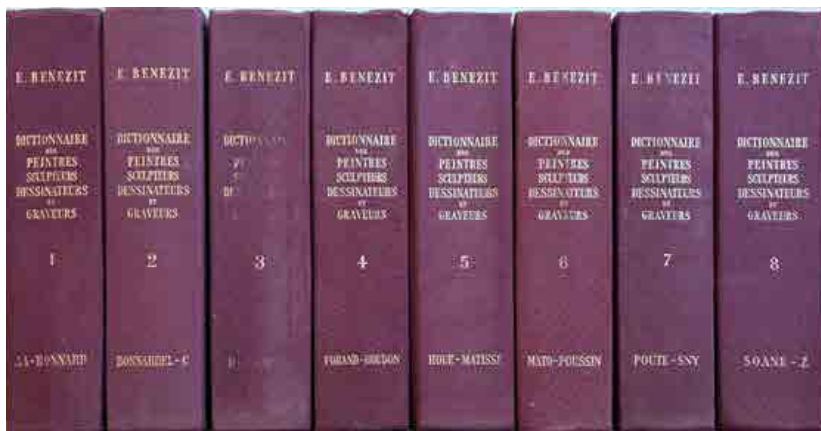


263. 20th Century Chinese School
A Mother and Child
Oil on canvas
20" x 24" (50.8 x 61cm)
£1000-£2000

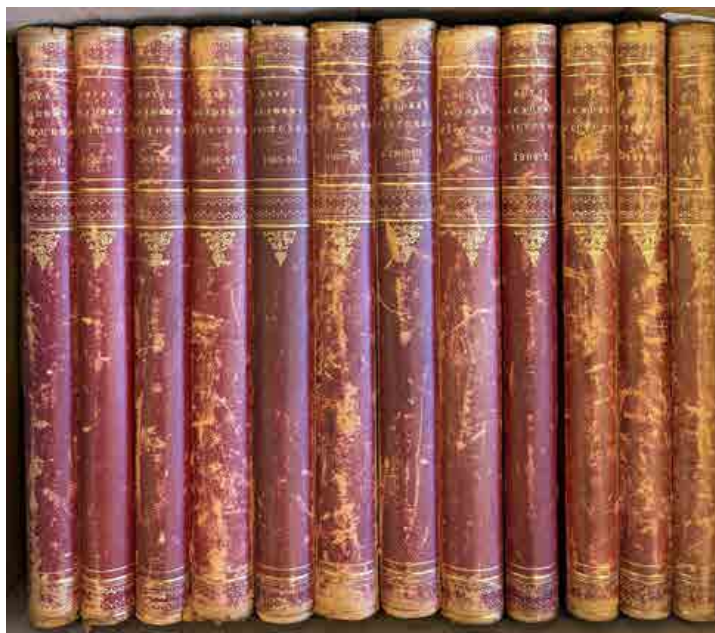
Books



264. Art Sales Index: 4 sets from 1997-2001, and two other boxes of art reference books (Q)
£40-£60



265. E. Benezit, 'Dictionnaire Des Peintres, Sculpteurs, Dessinateurs et Graveurs' (1996)
A-Z, 8 volumes, and another set A-H, 6 volumes (14)
£50-£80



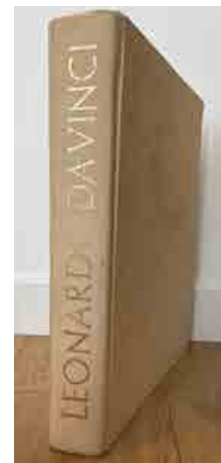
266. 'Royal Academy Pictures' (Illustrated) in twelve volumes from 1888 to 1913, Published by Cassell and Company, Leather bound (12)
£200-£300



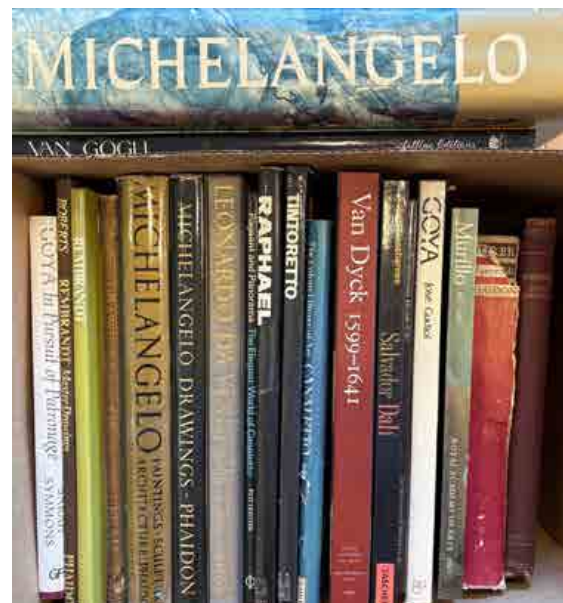
267. The Royal Academy Illustrated 1916-1994 (nearly complete), together with a collection of books on various national museums (Q)
£80-£120



268. A Collection of Books on Ancient Greek and Roman Art (7)
£20-£30



269. A Collection of Books on Old Masters, including: Michelangelo, Raphael, Da Vinci, Titian, and Baroni (19)
£40-£60



270. A Collection of Books on Old Masters, including Michelangelo, Da Vinci, Raphael, Van Dyck, Durer, Goya, and Rembrandt
£50-£100



276. A Collection of Books on George Stubbs: Catalogue Raisonne (Judy Egerton), and 5 other books on the artist (6)
£40-£60



277. A Collection of Books on Early British Artists, including: Hogarth, Reynolds, Gainsborough, and Turner (17)
£50-£80



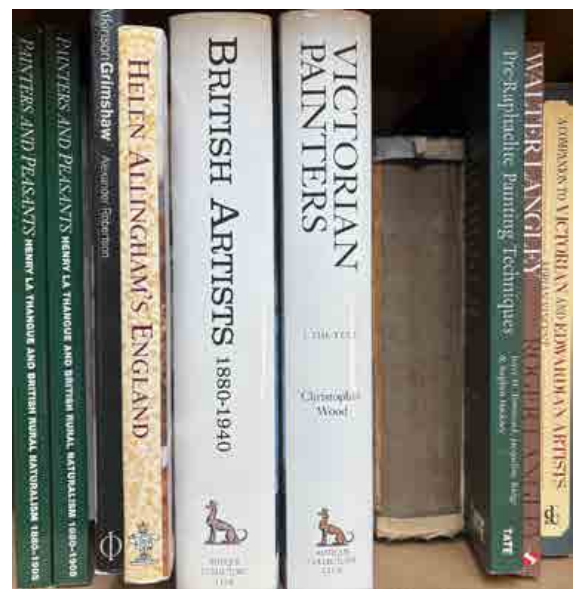
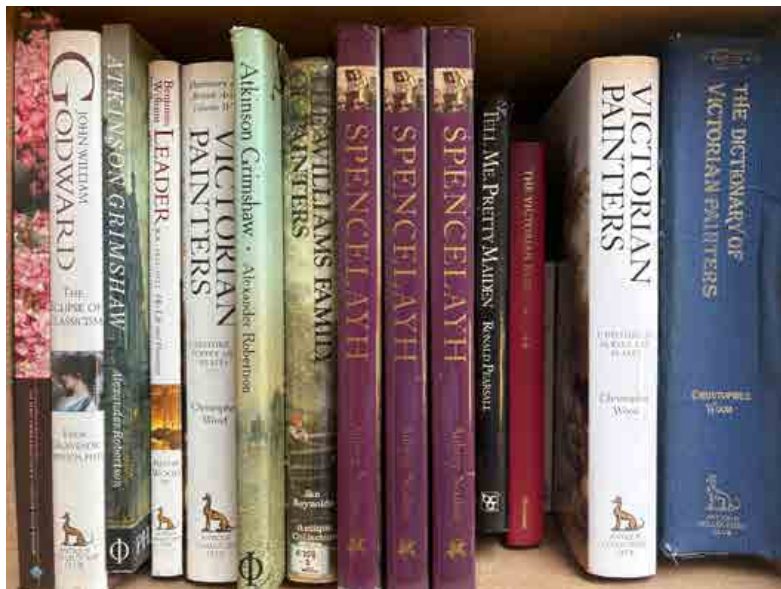
278. A Collection of French Reference Books, and Books on Early French Artists, including: Delacroix, and Watteau (Q)
£40-£60



279. A Collection of Books on Early Dutch and European Artists (15)
£40-£60



280. 'Biografisch Lexicon, Plastische Kunst in België 1830-2000', Published by Wim and Greet Pas, (2 Volumes); 'De Belgische Beeldende Kunstenaars 19th-20th Century, Paul Piron (2 Volumes) (4)
£30-£50



281. A Collection of Books on Victorian Artists, including: The Dictionary of Victorian Painters, Spencelath, B.W. Leader, and the Williams family (27)
£60-£80



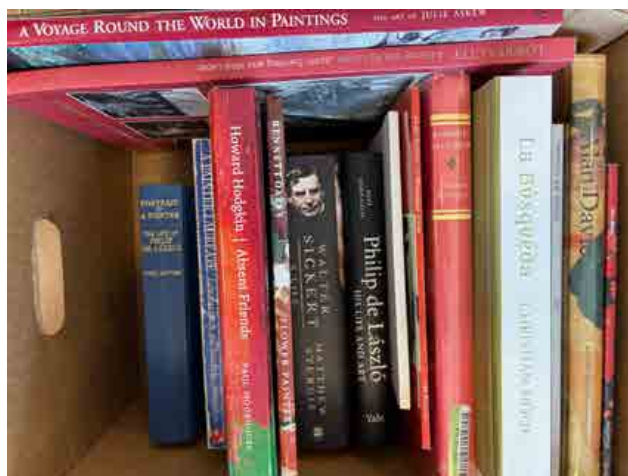
282. Signatures & Monogrammes of Artists of 19th and 20th Century', Editions Van Wilder; 'Dictionary of British Book Illustrators, the Twentieth Century' by Brigid Peppin and Lucy Michlethwait; 'The Dictionary of British Watercolour Artists up to 1920' by Huon Mallalieu (2 Volumes) (4)
£30-£50



283. Dictionary of American Artists, 19th and 20th Century', published by Glenn Opitz & Apollo Book; 'Essential History of American Art by Suzanne Bailey; 'Who was Who in American Art', edited by Peter Hastings Falk; 'Art under Stalin' by Matthew Cullerne Bown (4)
£30-£50



284. Modern Masters of Etchings', Ten Volumes including 'Zorn', 'Short', 'Benson', 'Meryon', 'Walcot', 'Lumsden', 'Rushbury', 'West', 'Austin' and 'Lewis' (10)
£30-£50



285. **A Collection of Books on 20th and 21st Century British Artists**, including: Henry Moore, Lowry, Frink, De Laszlo, Lenkiewicz, Howard Hodgkin, and others (Q)
£60-£80

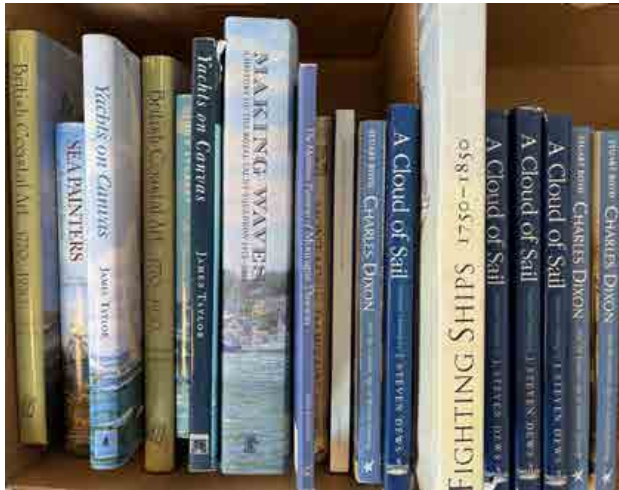


286. **A Collection of Books on John Singer Sargent (7),
and James McNeill Whistler (5)**
£40-£60

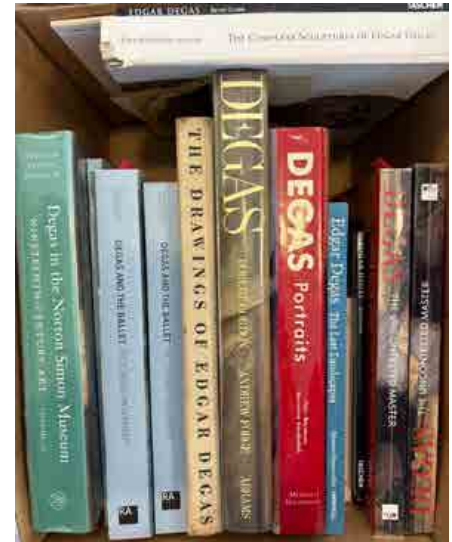
287. A Collection of Books on Edward Seago
(5), Alfred Munnings (2), John Lavery (1),
and Edward Wesson (2) (11)
£30-£50



288. **A Collection of Books on British Artists**, including: Stanley Spencer (Keith Bell), Edward Wadsworth (Jonathan Black), Mary Newcomb, Winston Churchill, Laura Knight, Vanessa Bell, Henry Scott Tuke, and other artists (30)
£60-£80



289. A Collection of Books on Marine Artists, including: Montague Dawson, Charles Dixon, and J Steven Dews (19)
£60-£80



290. A Collection of Books on Edgar Degas (15)
£50-£80



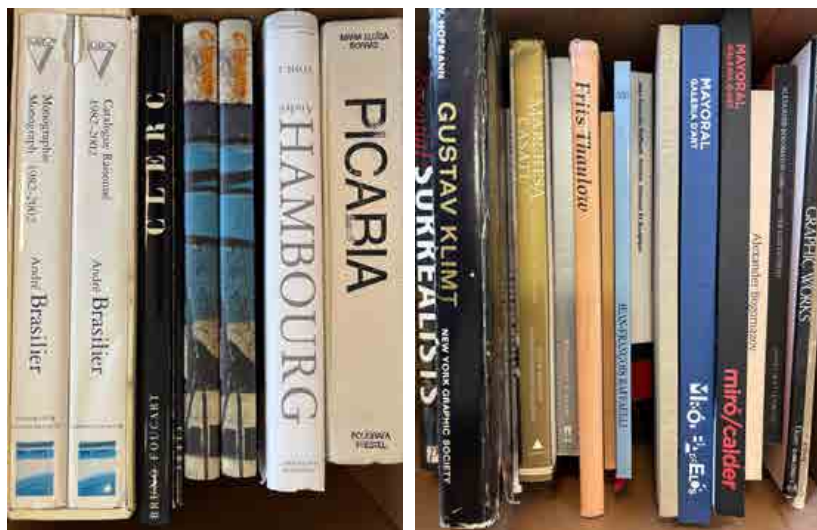
291. A Collection of Books on Eugene Boudin, including: A Monograph (G. Jean-Aubry) (10)
£40-£60



292. A Collection of Books on Spanish Artists, including: Velazquez, Goya, Sorolla, and Picasso (9)
£50-£80



293. A Collection of Books on Monet, and the Impressionists, including: "Monet Catalogue Raisonne I-IV" (Daniel Wildenstein) (17)
£80-£120



294. A Collection of Books on European Artists, including: Picabia, Klimt, Miro, Brasseur (Catalogue Raisonné), and Hambourg (Catalogue Raisonné) (Q)
£80-£120



295. A Collection of Books on European Artists, including: the Fauves, Henri Lebasque (Catalogue Raisonné), Bonnard, Modigliani, Carlos Nadal, and Van Dongen (Q)
£100-£200



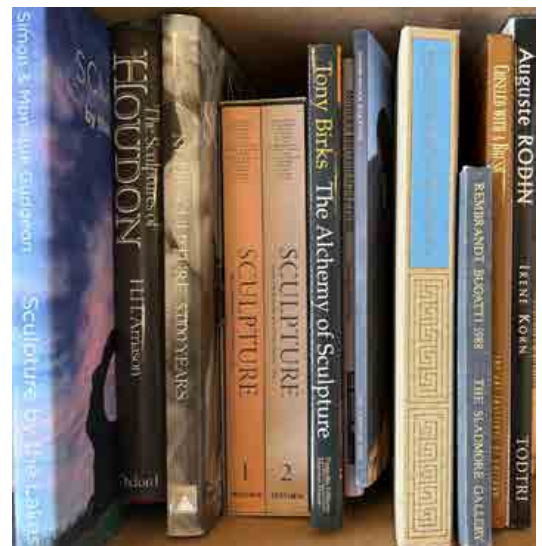
296. A Collection of Books on French Artists, including: Gaston La Touche, Helleu, Toulouse-Lautrec, Boldini, Paul-César Helleu, Sisley, Pissarro, Renoir, and Gauguin (Q)
£100-£200



297. A Collection of Books on American Artists and Exhibitions, including books on: Benjamin West, Winslow Homer, and the Peale family (23)
£60-£80



298. A Collection of Books on Modern American Artists, including: Andy Warhol, Calder, Diebenkorn, Karl Benjamin, James Jarvaise, Leon Kelly, and Norman Rockwell (15)
£60-£80



299. A Collection of Books on Sculpture (14)
£30-£50



300. A Collection of Books on the Art World, including: "Confessions of a Master Forger" (Hebborn), "Art Fakes in America" (Goodrich), "The Lost Masters", and others (17)
£40-£60

Frames



301. 20th Century English School
A Painted Composition Frame, with swept centres and corners,
rebate 60" x 36" (152.4 x 91.5cm)
£40-£60



302. 20th-21st Century English School
A White Painted Frame, with gilt edging, rebate 59" x 39.5"
(149.8 x 100.3cm)
£60-£80



303. 20th Century English School
A Gilt Composition Frame, with swept corners, rebate 45" x 30"
(114.3 x 76.2cm)
£30-£50



304. 20th Century English School
A Gilt Composition Frame, rebate 44.5" x 35.25"
(113 x 89.5cm)
£30-£40



305. 19th Century English School
A Gilt Composition Frame, rebate 42.5" x 24" (107.9 x 61cm)
and three other frames of various sizes (4)
£30-£50



306. 20th Century English School
A Gilt Composition Frame, with swept centres and corners,
rebate 42.25" x 28" (107.3 x 71.1cm)
£80-£120



307. 20th Century English School

A Gilt Composition Frame, with swept centres and corners, rebate 41.25" x 29.25" (104.8 x 74.3cm)
£50-£80



308. 20th Century English School

A Gilt Composition Frame, with swept and pierced centres and corners, rebate 40" x 31" (101.7 x 78.8cm)
£40-£60



309. 20th Century European School

A Gilt Composition Frame, rebate 40" x 30" (101.7 x 76.2cm)
£30-£40



310. 20th Century Dutch School

A Wooden Frame, rebate 39.5" x 25.5" (100.3 x 64.7cm)
£80-£120



311. 20th Century English School

A Painted Composition Frame, with swept and pierced centres and corners, rebate 39" x 29.25" (99.1 x 74.3cm)
£60-£80



312. 19th Century English School

A Gilt Composition Frame, with swept corners, rebate 38.5" x 27" (97.8 x 68.6cm)
£50-£80



313. 19th Century English School
A Cushioned Maple Frame, with a gilt slip, rebate 37" x 31" (94 x 78.8cm)
£60-£80



314. 20th Century European School
A Gilt and Painted Composition Frame, with a painted slip, rebate 37" x 28.75" (94 x 73cm)
£60-£80



315. Early 20th Century English School
A Gilt Composition Frame, with a floral inlay, rebate 36" x 28.25" (91.5 x 71.8cm)
£60-£80



316. 19th Century English School
A Gilt Composition Frame, with silver slip, rebate 36" x 28" (91.5 x 71.1cm)
£30-£50



317. 19th Century English School
A Gilt Composition Frame, rebate 36" x 28" (91.5 x 71.1cm)
£30-£40



318. 19th Century English School
A Gilt Composition Frame, rebate 36" x 28" (91.5 x 71.1cm)
£60-£80



319. 20th Century English School
A Gilt Composition Frame, rebate 36" x 28" (91.5 x 71.1cm) and another composition frame, rebate 30" x 24" (76.2 x 61cm) (2)
£30-£50



320. 19th Century English School
A Gilt and Painted Composition Frame, rebate 36" x 24" (91.5 x 61cm)
£40-£60



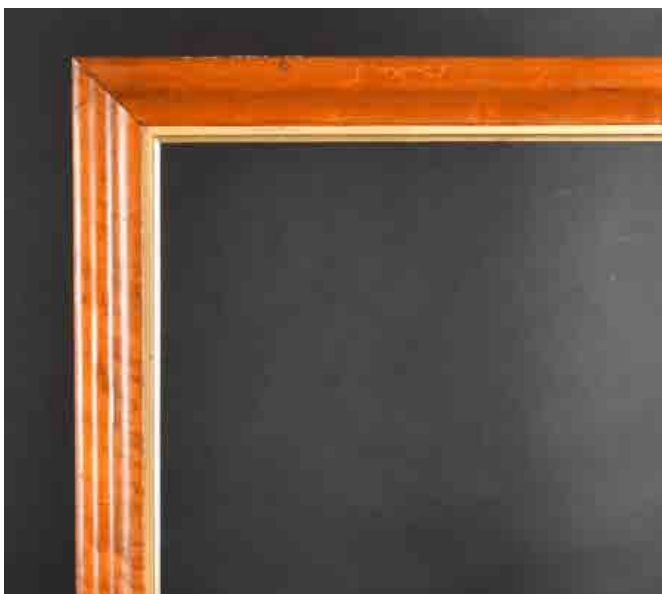
321. 19th Century English School
A Gilt Composition Frame, rebate 36" x 20" (91.5 x 50.8cm)
£200-£300



322. Early 20th Century English School
A Painted Composition Frame, rebate 35.25" x 23.75" (89.5 x 60.3cm)
and another frame (other size) (2)
£30-£40



323. Early 19th Century English School
A Carved Giltwood Overmantel Frame, rebate (horizontal)
34.25" x 14.25" (87 x 36.2cm)
£80-£120



324. 19th Century English School
A Maple Frame, with a gilt slip, rebate 34" x 24.25" (86.4 x 61.6cm)
£60-£80



325. 19th Century English School
A Gilt Composition Frame, with swept centres and corners,
rebate 33.5" x 29.25" (85.1 x 74.3cm) and another composition frame,
rebate 37" x 25.5" (94 x 64.7cm) (2)
£40-£60



326. 20th-21st Century English School
A Black Painted Frame, with silver inner and outer edging, rebate 32.75" x 27.75" (83.2 x 70.5cm)
£200-£300



327. 19th Century English School
A Gilt Composition Frame, rebate 32.75" x 21.75" (83.2 x 55.3cm)
£200-£300



328. Early 19th Century French School
A Louis Style Painted Carved Wood Frame, with swept centres and corners, rebate 32.25" x 23.25" (81.9 x 59cm), without slip rebate 35" x 26" (88.9 x 66cm)
£200-£300



329. 20th Century English School

A Gilt Composition Frame, with swept and pierced centres and corners, rebate 32" x 26" (81.3 x 66cm)
£80-£120



330. 20th Century European School

A Gilt Composition Frame, rebate 32" x 25.5" (81.3 x 64.8cm)
£40-£60



331. 20th Century English School

A Pair of Painted Composition Frames, rebate 31.75" x 19.5" (80.6 x 49.5cm) (2)
£40-£60



332. 20th-21st Century English School

A Pair of White Painted Frames, with gilt edging, rebate 31.5" x 23.75" (80 x 60.3cm) (2)
£80-£120



333. 19th Century English School

A Cushioned Darkwood Frame, with a gilt slip, rebate 31.5" x 21" (80 x 53.3cm)
£50-£80



334. 19th Century English School

A Maple Frame, with a gilt slip, rebate 30.75" x 26.25" (78.1 x 66.7cm)
£60-£80



335. 19th Century English School
A Gilt Composition Frame, rebate 30.75" x 20.75" (78.1 x 52.7cm)
£50-£80



336. 20th Century European School
A Painted Composition Frame, rebate 30.5" x 25.5" (77.5 x 64.7cm)
£30-£40



337. 20th Century English School
A Gilt Composition Frame, with swept and pierced centres and corners, rebate 30.25" x 25.25" (76.8 x 64.2cm)
£80-£120



338. 20th Century English School
A Gilt Composition Frame, with swept and pierced centres and corners, rebate 30.25" x 25.25" (76.8 x 64.2cm)
£80-£120



339. Early 20th Century English School

A Near Pair of Painted and Carved Giltwood Frames, with swept and pierced centres and corners, rebate 30.25" x 20.25" (76.8 x 51.4cm) and rebate 30" x 22" (76.2 x 55.8cm) (2)

£300-£400



340. 19th Century English School
A Painted Composition Frame, with Lely panels, rebate
30" x 25.25" (76.2 x 64.2cm)
£80-£120



341. Early 19th Century English School
A Silver Carved Wood Frame, rebate 30" x 25"
(76.2 x 63.5cm)
£400-£600



342. Early 19th Century English School
A Fine Gilt Composition Hollow Frame, rebate 30" x 25" (76.2 x 63.5cm)
£300-£500



343. 19th Century English School
A Painted Composition Frame, with swept centres and corners, rebate 30" x 25" (76.2 x 63.5cm)
£40-£60



344. 19th Century English School
A Painted Composition Frame, rebate 30" x 25" (76.2 x 63.5cm)
£40-£60



345. 20th Century English School
A Gilt Composition Frame, rebate 30" x 25" (76.2 x 63.5cm), and another composition frame, rebate 21" x 14.25" (53.3 x 36.2cm) (2)
£30-£50



346. 20th Century English School
A Gilt Frame, with a painted slip, rebate 30" x 25" (76.2 x 63.5cm)
£40-£60



347. 20th Century English School
A Gilt and Painted Composition Frame, with swept and pierced centres and corners, rebate 30" x 20" (76.2 x 50.8cm)
£50-£80



348. 20th Century English School
A Gilt Composition Frame, with swept and pierced centres and corners, rebate 30" x 20" (76.2 x 50.8cm)
£50-£80



349. 21st Century English School
A Painted Wooden Frame, rebate 30" x 20" (76.2 x 50.8cm)
£30-£50



350. 19th Century English School
A Painted Composition Frame, with a white painted slip, rebate 30" x 18" (76.2 x 45.7cm)
£30-£50



351. 20th-21st Century English School
A Pair of White Painted Frames, with gilt edging, rebate 29.5" x 17.75" (74.9 x 45cm) (2)
£80-£120



352. 20th Century French School
A Louis Style Painted Composition Frame, with swept centres and corners, and a fabric slip, rebate 29" x 23.75" (73.7 x 60.3cm) without slip, rebate 31.5" x 26.5" (80 x 67.3cm)
£60-£80



353. Early 19th Century English School
A Painted Hollow Composition Frame, rebate 29" x 23" (73.7 x 58.4cm)
£40-£60



354. 19th Century English School
Painted Composition Frame, rebate 29" x 21.5" (73.7 x 54.6cm)
£60-£80



355. 20th Century Dutch School
A Black Wood Frame, rebate 28.75" x 24.75" (73 x 62.8cm)
£200-£400



356. 18th Century French School
A Gilt Composition Frame, rebate 28.75" x 23.75" (73 x 60.3cm)
£80-£120



357. 20th Century English School
A Gilt Composition Frame, with a black inner edge and inset glass, rebate 28.5" x 23.75" (72.4 x 60.3cm)
£40-£60



358. 20th Century English School
A Gilt Composition Frame, rebate 28.5" x 21.5" (72.4 x 54.6cm)
£40-£60



359. 20th Century European School
A Wooden Frame, with a gilt inner edge and fabric slip, rebate 28.5" x 15.5" (72.4 x 39.3cm)
£40-£60



360. 20th Century European School
A Black Painted Frame, with a gilt slip, rebate 28" x 22" (71.1 x 55.8cm)
£80-£120



361. 19th Century English School
A Painted Composition Frame, with swept centres and corners, rebate 27.75" x 20.25" (70.5 x 51.4cm)
£40-£60



362. 19th Century English School
A Maple Frame, with a silver slip, rebate 27.5" x 21.25" (69.8 x 54cm)
£50-£80



363. 20th Century European School
A Darkwood Frame, rebate 27.5" x 21" (69.8 x 53.3cm)
£60-£80



364. 20th-21st Century English School
A Near Pair of White Painted Frames, with gilt edging, rebate 27.5" x 19.5" (69.8 x 49.5cm) (2)
£80-£120



365. 20th-21st Century English School
A White Painted Frame, with a gilt slip, rebate 27.5" x 17" (69.8 x 43.2cm)
£30-£50



366. Early 20th Century English School
A Set of Four Wooden Frames, with gilt slips, rebate 27.5" x 16.5"
(69.8 x 41.9cm) (4)
£150-£200



367. 19th Century English School
A Watts Gilt Composition Frame, with inset glass, rebate 27.25" x 16.75"
(69.3 x 42.5cm)
£60-£80



368. 19th Century English School
A Maple Frame, with a gilt slip, rebate 27" x 20" (68.6 x 50.8cm)
and another similar, rebate 25.5" x 22.5" (2)
£60-£80



369. 20th Century English School
A Gilt Composition Frame, with swept and pierced centres and corners,
rebate 27" x 20" (68.6 x 50.8cm)
£50-£80



370. 20th Century English School
A Painted Composition Frame, with swept and pierced centres and corners, rebate 27" x 19.5" (68.6 x 49.5cm)
£40-£60



371. 20th Century English School
A Darkwood Frame, with gilt inner and outer edges and inset glass, rebate 26.5" x 22.5" (67.3 x 57.1cm)
£30-£50



372. 19th Century English School
A Gilt Composition Hollow Frame, rebate 26" x 21.5" (66 x 54.6cm)
£80-£120



373. 20th Century French School
A Painted Carved Wood Frame, rebate 26" x 21.25" (66 x 54cm)
£80-£120



374. 20th Century French School
A Painted Frame, with a white slip, rebate 25.75" x 19.75" (65.4 x 50.2cm)
£40-£60



375. 20th Century English School
A Gilt Composition Frame, with swept and pierced centres and corners, rebate 25.5" x 21.5" (64.8 x 54.6cm)
£60-£80



376. 20th Century English School
A Gilt Composition Frame, rebate 25.5" x 21.5" (64.7 x 54.6cm)
£30-£50



377. 20th Century English School
A Gilt Composition Frame, rebate 25.25" x 12.25" (64.2 x 31.1cm)
£40-£60



378. 19th Century English School
A Black Painted Frame, with a gilt inner edge, rebate 24.5" x 20.25"
(62.2 x 51.4cm)
£30-£50



379. 19th Century English School
A Darkwood Frame, rebate 24.5" x 19.75" (62.2 x 50.1cm)
£40-£60



380. 20th Century English School
A Gilt Composition Frame, rebate 24.25" x 16.5" (61.6 x 41.9cm)
£30-£50



381. 19th Century French School
A Gilt Composition Frame, with inset print and glass,
rebate 24" x 20.75" (61 x 52.7cm)
£40-£60



382. 20th-21st Century English School
A Gilt Composition Frame, with swept centres and corners, rebate 24" x 20.5" (61 x 52.1cm)
£60-£80



383. 20th Century English School
A Gilt and Painted Composition Frame, with swept and pierced centres and corners, rebate 24" x 20" (61 x 50.8cm)
£60-£80



384. 20th Century European School
A Painted Frame, rebate 24" x 20" (61 x 50.8cm)
£80-£120



385. 20th Century English School
A Gilt Composition Frame, rebate 24" x 20" (61 x 50.8cm)
£40-£60



386. 20th Century English School
A Gilt Composition Frame, with swept and pierced centres and corners, rebate 24" x 20" (61 x 50.8cm)
£50-£80



387. 19th Century English School
A Painted Composition Frame, with swept centres and corners, rebate 24" x 18" (61 x 45.7cm)
£50-£80



388. Early 20th Century English School
An Arts and Crafts Overmantel Frame, rebate 24" x 16.75" (61 x 42.5cm)
£50-£80



389. 20th Century English School
A Gilt Composition Frame, with swept and pierced centres and corners, rebate 24" x 16" (61 x 40.6cm)
£80-£120



390. 20th-21st Century English School
A Painted Composition Frame, with a white slip, rebate 24" x 16" (61 x 40.6cm)
£40-£60



391. 19th Century English School
A Painted Composition Frame, with swept centres and corners, rebate 24" x 15.25" (61 x 38.7cm)
£30-£50



392. 20th Century English School
A Gilt Composition Frame, with swept centres and corners, rebate 24" x 12" (61 x 30.5cm)
£30-£50



393. 19th Century English School
A Gilt Composition Frame, rebate 24" x 9" (61 x 22.8cm) without slip, rebate 29.5" x 14.5" (75 x 36.8cm)
£40-£60



394. 20th Century English School
A Black Painted Frame, rebate 23.75" x 19.75" (60.3 x 50.2cm)
£100-£200



395. 20th-21st Century English School
A Silver Composition Frame, rebate 23.75" x 19.75" (60.3 x 50.2cm)
£80-£120



396. 19th Century English School
An Inlaid Wooden Frame, rebate 23.75" x 18" (60.3 x 45.7cm)
£30-£50



397. 20th Century English School
A Gilt Composition Frame, rebate 23.75" x 18" (60.3 x 45.7cm)
£40-£60



398. 20th Century Dutch School
A Wooden Frame, rebate 23.75" x 12" (60.3 x 30.5cm)
£30-£40



399. 20th Century English School
A Wooden Frame, with corner blocks, rebate 23" x 19"
(58.4 x 48.2cm)
£30-£50



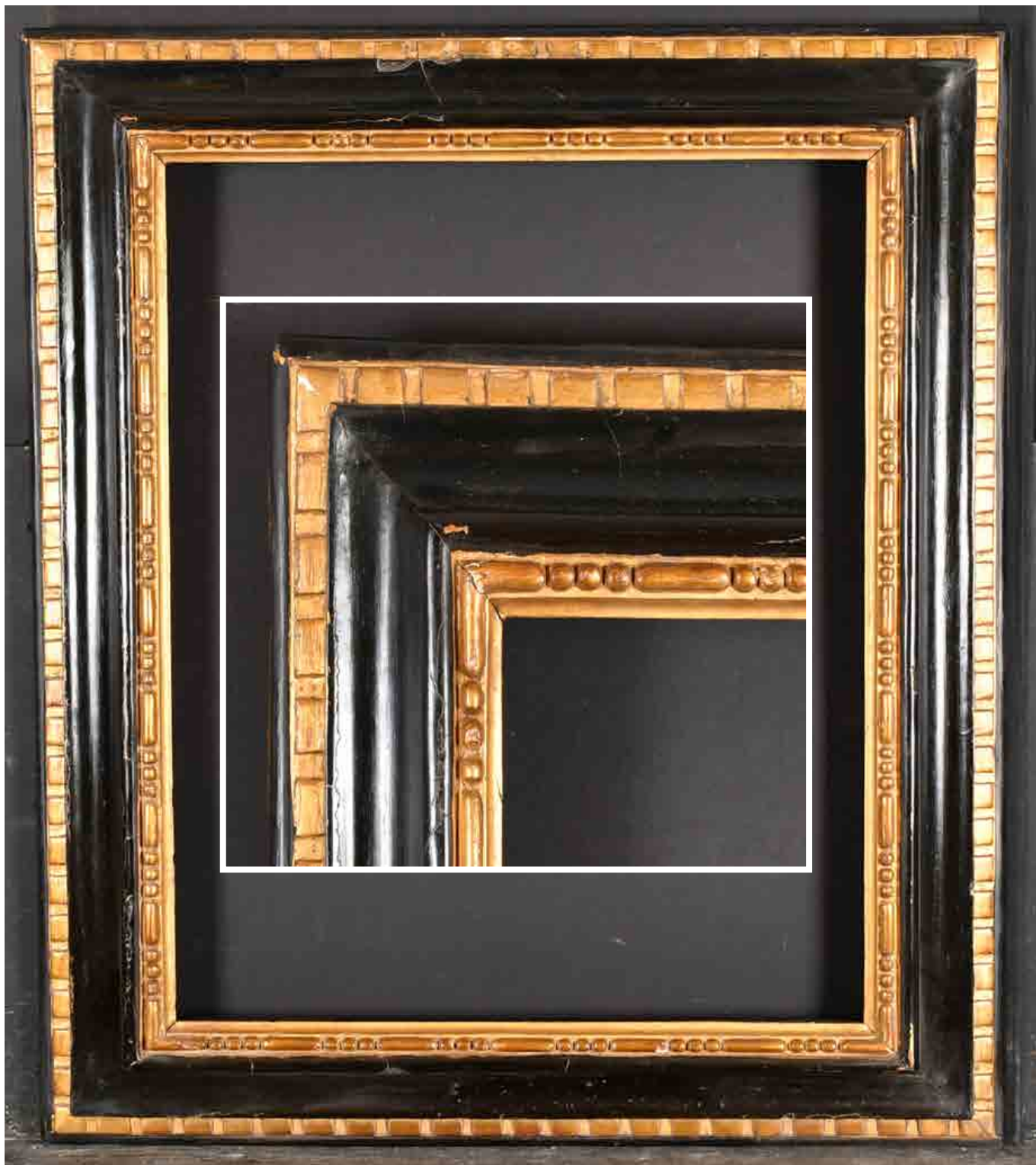
400. 20th-21st Century English School
A Silver Composition Frame, rebate 23" x 19" (58.4 x 48.2cm)
£80-£120



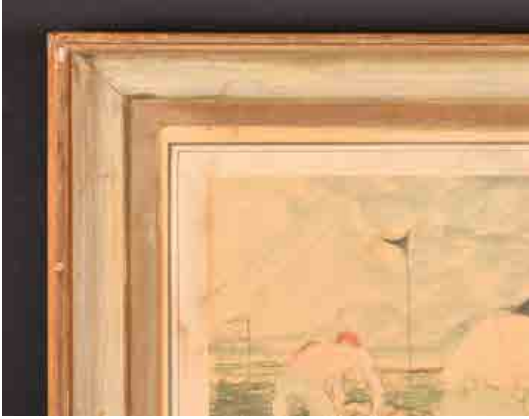
401. 20th Century English School
A Gilt Composition Frame, rebate 23" x 18.5" (58.4 x 47cm)
£30-£50

402. 20th Century English School
A Painted Composition Frame, rebate 23" x 17.75" (58.4 x 45.1cm)
£30-£50





403. Late 18th Century Spanish School
 A Black Painted Frame, with gilt inner and outer edges, rebate 23" x 17.5" (58.4 x 44.4cm)
 £300-£400



404. 20th Century English School
A Painted Composition Frame with a fabric slip, rebate 23" x 17.5"
(58.4 x 44.4cm) without slip 24.5" x 19" (62.2 x 48.2cm)
£30-£50



405. 19th Century English School
A Gilt and Black Painted Composition, rebate 22.5" x 18.25"
(57.2 x 46.3cm)
£40-£60



406. 20th Century English School
A Gilt Composition Frame, with inset glass, rebate 22.5" x 18.25"
(57.2 x 46.3cm)
£30-£40



407. Early 20th Century English School
A Gold and Green Painted Frame, rebate 22.25" x 18.25"
(56.5 x 46.4cm)
£30-£50



408. 20th Century English School
A Seago Painted Composition Frame, lined with fabric,
rebate 22.25" x 17.25" (56.5 x 43.8cm)
£40-£60



409. 20th Century English School
A Medici Composition Frame with inset print and glass,
rebate 22" x 18.25" (55.8 x 46.3cm) and another similar,
22" x 15.5" (55.8 x 39.4cm)
£40-£60



410. 20th-21st Century English School
A Painted Frame with gilt inner and outer edges, rebate 22" x 16"
(55.8 x 40.6cm), and two other frames (various sizes) (3)
£30-£50



411. 20th Century English School
A Painted Composition Frame, rebate 22" x 14" (55.8 x 35.5cm)
£30-£50



412. 19th Century English School
A Darkwood Frame,
rebate 21.75" x 18.25" (55.2 x 46.4cm)
£300-£400



413. 19th Century English School
A Gilt Composition Frame, rebate 21.5" x 17.75" (54.6 x 45.1cm)
£50-£80



414. 19th Century English School
A Painted Composition Frame, rebate 21.5" x 14.25" (54.6 x 36.2cm)
£40-£60



415. Early 19th Century English School
A Hollow Gilt Composition Frame, rebate 21.25" x 18" (54 x 45.7cm)
£150-£200



416. Early 20th Century English School
A Painted Mirror Frame, with inset glass, rebate 21.25" x 15.75" (54 x 40cm)
£30-£40



417. 20th Century English School
A Gilt Composition Frame, with inset glass, rebate 21" x 14.5"
(53.3 x 36.8cm), and two other frames (various sizes) (3)
£30-£50



418. 19th Century English School
A Gilt Composition Watts Frame, rebate 21" x 14" (53.3 x 35.6cm)
£150-£200



419. 19th Century English School
A Reverse Maple Frame, rebate 20.75" x 15.25" (52.7 x 38.7cm)
£40-£60



420. Late 18th Century English School
A Darkwood Frame, with a carved giltwood slip, rebate 20" x 17.5"
(50.8 x 44.4cm)
£80-£120



421. 20th Century English School
A Gilt Composition Frame, with swept and pierced centres and corners, rebate 20" x 16" (50.8 x 40.6cm)
£80-£120



422. Early 20th Century English School
A Painted Frame, rebate 20" x 12.5" (50.8 x 31.7cm) and two others similar (various sizes) (3)
£50-£80



423. 20th Century English School
A Gilt Composition Frame, rebate 20" x 12" (50.8 x 30.5cm)
£40-£60



424. 20th-21st Century English School
A Silver Composition Frame, rebate 19.75" x 15.75" (50.2 x 40cm)
£80-£120



425. 19th Century English School
A Darkwood Frame, rebate 19.5" x 18" (49.5 x 45.7cm)
£50-£80



426. 20th-21st Century English School
A White Painted Frame, with silver edges, rebate 19.5" x 15.5" (49.5 x 39.4cm)
£80-£120



427. Early 20th Century English School
A Black Painted Frame, with a gilt slip, rebate 19.25" x 15"
48.9 x 38.1cm)
£60-£80



428. 19th Century English School
A Painted Composition Frame, with swept centres and corners,
rebate 19" x 15" (48.2 x 38.1cm) together with two other frames
(various sizes) (3)
£30-£50



429. 19th Century English School
A Gilt Composition Frame, rebate 19" x 11.75" (48.2 x 29.8cm)
£50-£80



430. Early 20th Century English School
A Black Painted Frame, rebate 18.75" x 15.5" (47.6 x 39.4cm)
£60-£80



432. 20th-21st Century English School
A Black Painted Frame, with silver edging, rebate 18.25" x 15.25"
(46.3 x 38.7cm)
£100-£200



431. 19th Century English School
A Gilt Composition Frame, with inset glass, rebate 18.25" x 15.25"
(46.4 x 38.7cm)
£40-£60



433. 20th Century English School
A Painted Frame, rebate 18.25" x 15" (46.3 x 38.1cm)
£30-£50



434. Early 20th Century French School
A Painted Carved Wood Frame, with a white slip, rebate 18" x 15"
(45.7 x 38.1cm)
£60-£80



435. 20th Century French School
A Painted Frame, rebate 18" x 15" (45.7 x 38.1cm)
£40-£60



436. 20th Century European School
A Gold and White Painted Frame, rebate 18" x 15" (45.7 x 38.1cm)
£50-£80



437. 20th Century French School
A Painted Carved Wood Frame, rebate 18" x 15" (45.7 x 38.1cm)
£80-£120



438. 19th Century French School
A Gilt Composition Empire Frame, rebate 18" x 14.5" (45.7 x 36.8cm)
£30-£50



439. 20th Century European School
A Painted Wooden Frame, with a fabric slip, rebate 18" x 13"
(45.7 x 33cm), without slip, rebate 19.25" x 14.25" (48.9 x 36.2cm)
£50-£80



440. 20th Century French School
A Painted Carved Wood Frame, rebate 18" x 12.5" (45.7 x 31.7cm)
£60-£80



441. 20th Century French School
A Painted Frame, rebate 18" x 12.5" (45.7 x 31.7cm)
£40-£60



442. 20th Century English School
A Painted Composition Frame, with swept centres and corners,
rebate 17.75" x 9" (45 x 22.8cm)
£30-£50



443. 19th Century English School
A Maple Frame, rebate 17.25" x 14" (43.8 x 35.5cm) and another similar,
rebate 19.75" x 16.5" (50.1 x 41.9cm) (2)
£50-£80



444. Late 18th Century English School
 A Darkwood Frame, with a giltwood slip, rebate 17" x 14.25"
 (43.2 x 36.2cm) and another frame, rebate 24" x 18.75" (61 x 47.6cm) (2)
£60-£80



445. Early 19th Century English School
 A Near Pair of Gilt Composition Frames, rebate 17" x 13.5"
 (43.2 x 34.3cm) (2)
£200-£300



446. 19th Century English School
 A Hogarth Style Composition Frame, with eglomise glass, rebate 17" x 13"
 (43.2 x 33cm) and two others similar (3)
£50-£80



447. Early 20th Century English School
A Pair of Darkwood Frames, with silver slips, rebate 16.5" x 13.5"
(41.8 x 34.3cm) (2)
£80-£120



448. 19th Century English School
A Gilt Composition Frame, rebate 16.5" x 13" (41.9 x 33cm)
£30-£50

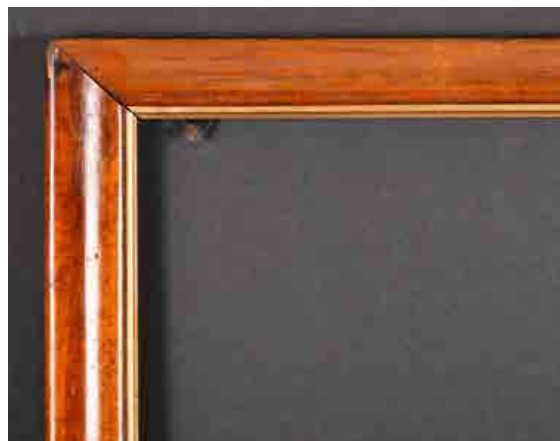


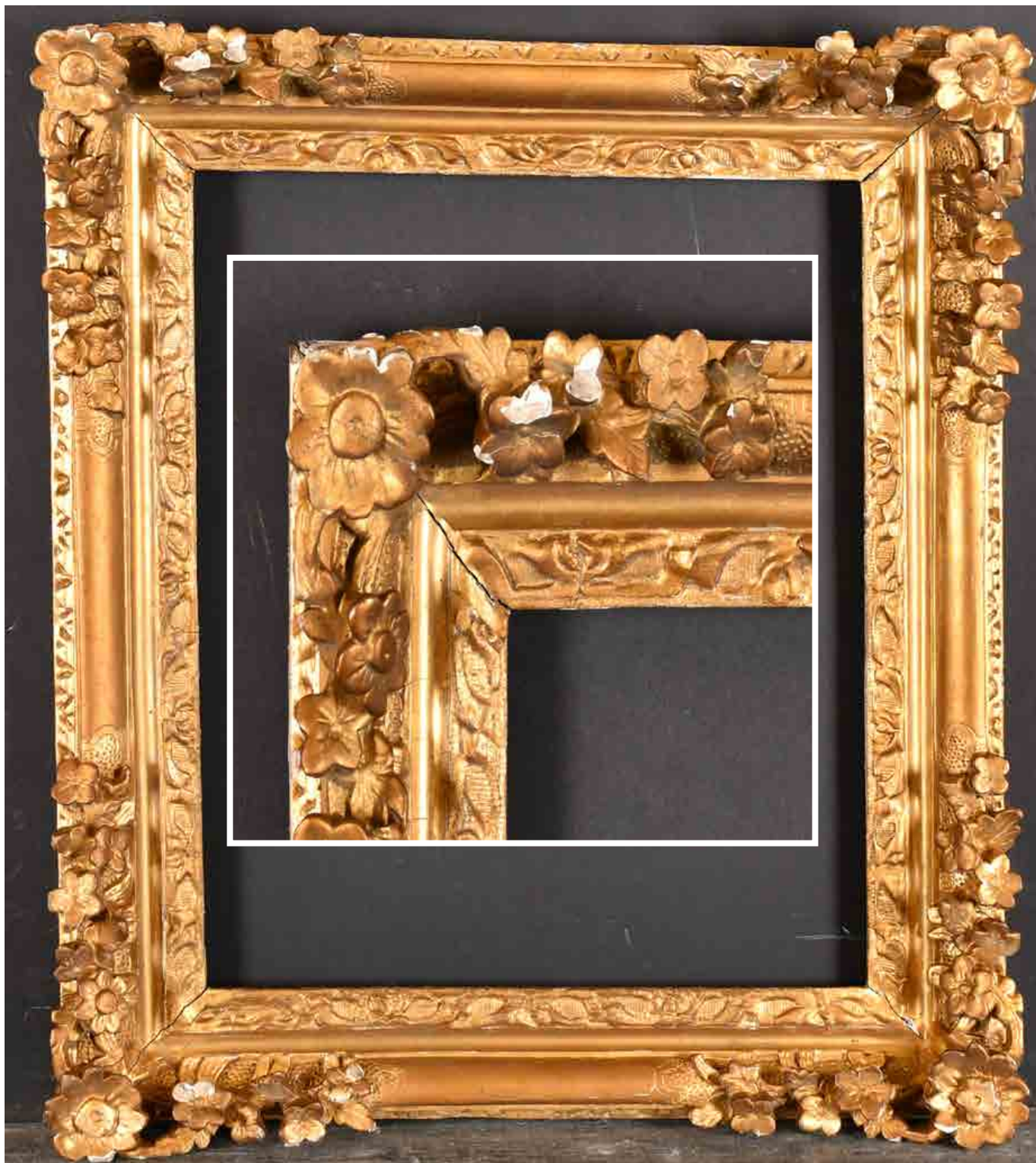
449. 19th Century English School
A Darkwood Frame, rebate 16.5" x 12.25" (41.9 x 31.1cm)
£30-£40



450. Early 20th Century English School
A Silver and Gilt Composition Frame, rebate 16.25" x 15.75"
(41.2 x 40cm)
£150-£200

451. 19th Century English School
A Maple Frame, with a gilt slip, rebate 16.25" x 13.25" (41.2 x 33.6cm)
and another similar, rebate 19" x 15.25" (48.2 x 31.8cm) (2)
£50-£80





452. 18th Century French School

A Carved Giltwood and Painted Frame, with swept and pierced corners, rebate 16.25" x 12.75" (41.2 x 32.4cm)

£300-£500



453. Mid 18th Century Irish School

A Fine Pair of Chippendale Style Chinoiserie Frames, with inset period engravings, rebate 16.25" x 12.5" (41.3 x 31.8cm) (2)
 £400-£600



454. 19th Century English School
A Pair of Maple Frames, with gilt slips, rebate 16.25" x 12" (41.3 x 30.5cm) (2)
£60-£80



455. Early 19th Century English School
A Gilt Composition Sporting Frame, rebate 16" x 14.25"
(40.6 x 36.2cm)
£80-£120



456. 19th Century English School
A Gilt Composition Frame, rebate 16" x 12" (40.6 x 30.5cm)
£30-£50



457. 20th-21st Century English School
A Painted Frame, with a white slip, rebate 15.75" x 15.75"
(40 x 40cm)
£30-£50



458. 20th Century English School
A Painted Frame, with a gilt slip, rebate 15.75" x 12.5" (40 x 31.7cm)
£40-£60



459. 20th Century French School
A Painted Frame, rebate 15.75" x 11.75" (40 x 29.8cm)
£50-£80



460. 20th Century English School
A Gilt Composition Frame, rebate 15.5" x 13.5" (39.3 x 34.3cm) and
another frame, rebate 16" x 12" (40.6 x 30.5cm) (2)
£30-£40



461. 19th Century English School
A Silver Rippled Composition Frame, rebate 15.25" x 12.75" (38.7 x 32.4cm)
£100-£200



462. 19th Century English School
A Silver Composition Frame, rebate 15.25" x 12.25" (38.7 x 31.1cm)
£30-£40



463. 20th-21st Century English School
A Gilt Composition Frame, rebate 14.75" x 14" (37.5 x 35.5cm)
£50-£80



464. 19th Century English School
A Painted Composition Frame, with inset glass, rebate 14.75" x 13.5"
(37.4 x 34.3cm)
£30-£40



465. Late 18th Century English School
A Carved Wood Frame, rebate 14.25" x 10.5" (36.2 x 26.7cm)
£30-£50



466. Late 18th Century English School
A Darkwood Frame, with inset glass, rebate 14.25" x 10.25" (36.2 x 26cm) and similar frame (later), rebate 14" x 10.25" (35.5 x 26cm) (2)
£60-£80



467. 20th Century English School
A Gilt and Painted Composition Frame, with a white slip, rebate 14" x 10" (35.5 x 25.4cm)
£60-£80



468. 20th-21st Century English School
A Pair of White Painted Frames, with gilt edging, rebate 14" x 10"
(35.5 x 25.4cm) (2)
£60-£80



469. 19th Century English School
A Set of Seven Hogarth Style Frames, with eglomise glass, rebate 12.75" x 9.5" (32.4 x 24.1cm)(7)
£80-£120



470. 19th Century English School
A Maple Frame, with a gilt slip, rebate 12.5" x 9.5" (31.8 x 24.2cm),
together with three other maple frames (various sizes) (4)
£80-£120



471. 20th-21st Century English School
A Silver Composition Frame, rebate 12.25" x 9.75" (31.1 x 24.8cm)
£80-£120



472. 20th Century English School
A Gilt Composition Frame, rebate 12" x 10" (30.5 x 25.4cm)
£30-£40



473. 20th-21st Century European School
A Darkwood Frame, rebate 12" x 9.75" (30.5 x 24.7cm)
together with two other frames (various sizes) (3)
£40-£60



474. 19th Century English School
A Carved Giltwood Frame, rebate 11.75" x 8.75" (29.8 x 22.2cm)
£80-£120



475. 21st Century English School
A Gilt Composition Frame, rebate 11.5" x 9" (29.2 x 22.8cm)
£30-£50



476. Early 20th Century Dutch School
A Black Wood Frame, rebate 11.25" x 9.25" (28.6 x 23.5cm)
£50-£80



477. Early 20th Century English School
A Black Painted Frame, rebate 10.5" x 7.5" (26.7 x 19cm)
£60-£80



478. 20th Century English School
A Hollow Gilt Composition Frame, rebate 10.25" x 8.5" (26 x 21.6cm)
£40-£60



479. 19th Century English School
A Gilt Composition Frame, rebate 9.75" x 7.75"
(24.8 x 19.7cm)
£80-£120



480. 19th Century English School
A Gilt Composition Frame, rebate 9" x 6.75" (22.8 x 17.1cm)
£30-£50



481. 19th Century English School
A Gilt Composition Frame, with inset glass, rebate 9" x 6.5"
(22.8 x 16.5cm), and another similar, rebate 9.75" x 6.5" (24.7 x 16.5cm) (2)
£80-£120



483. 20th Century English School

A Set of Three Gilt Composition Frames with swept corners, rebate 3.75" x 2.5" (9.5 x 6.4cm) and another smaller (4)
£100-£200



482. 19th Century English School

A Pair of Gilt Composition Frames, rebate 4.5" x 4.25" (11.4 x 10.7cm) and another similar, rebate 5.25" x 5.25" (13.4 x 13.4cm) (3)
£40-£60



484. 20th Century English School

A Set of Four Gilt Composition Frames with swept corners, rebate 2.75" x 2.25" (7 x 6.4cm)
£100-£200



PARKER
FINE ART AUCTIONS

Forthcoming
Fine Paintings
& Frames Sale

7th August 2025

To consign to our sales is
just £10 (+VAT) per lot
Includes all commission,
illustration and insurance.
No other charges

Explanation of Catalogue Terms

The forename(s) (or asterisks where not known) and surname of the artist indicates, in our opinion, an original work by the artist named. The initials of the forename(s) and the surname of the artist indicates in our opinion a work of the period of the artist which may be wholly or in part his/her work.

'Attributed to...'	In our opinion probably a work by the artist, but with less certainty as to authorship in whole or part.
'Studio of ...'	In our opinion a work by an unknown artist in the studio of the artist, possibly under the artist's direction.
'Circle of ...'	In our opinion a work of the period, by an unknown artist with the artist's influence.
'Style of ...'	In our opinion a work at a later date, by an unknown artist following the artist's style.
'Follower of ...'	In our opinion a work at a much later date, by an unknown artist following the artist's style.
'Manner of ...'	In our opinion a work at an unknown date, by an unknown artist following the artist's style.
'After ...'	In our opinion a work at a later date, by an unknown artist copying a work of the artist.
'Signed, Dated & Inscribed'	In our opinion the signature, date and inscription are from the hand of the artist.
'Highlighted Signature'	In our opinion the signature is/are from the hand of the artist, in whole or part, that may have been restored.
'Bears a Signature'	In our opinion the signature is not by the artist and has been added by another hand/hands at a later date.
'Oil Painting'	In our opinion is painted in oils or acrylic.
'Mixed Media'	In our opinion a mixture or combination of part, some or all of the following - Oil, Watercolour, Gouache, Pencil, Ink or Print.

Consign to our 2025 sales

£10 (+VAT) per lot

Includes all commission, illustration and insurance

No other charges

AUCTION INFORMATION

BUYER'S FEES - All purchases are subject to a buyer's premium, which is charged per lot at 25% of the hammer price plus VAT at the current rate of 20% will be added to the buyer's premium of all lots.

CONDITION REPORTS - Condition reports can be requested by contacting us at info@parkerfineartauctions.com or calling us on 01252 20 30 20. Bidders must satisfy themselves as to the condition of each lot. A Condition Report is an honest expression of our opinion and not a statement of fact and is provided as a service to the Seller. Requests for condition reports must be submitted 24 hours before the start of the sale. The absence of a condition report in this catalogue does not imply there are no imperfections in the works.

REQUEST FOR IMAGES - More images can be found in the online catalogue. Requests for additional images of items in the sale can be made up to 24 hours before the start of the sale.

Please note the colours portrayed in the catalogue, and in additional images, are the best attempt at a likeness but cannot be confirmed as identical to the true colours.

Please note that, owing to the recent introduction of money laundering regulations clients wishing to bid in this auction will be asked to provide two forms of identification. This applies to new and existing clients.

ATTENDING THE AUCTION - If intending to buy you are required to register your name and details at our reception desk on the day of the auction. You will then be allocated a bidding number, which you use when bidding for an item.

ABSENTEE BIDS - You can place an absentee bid, and the auctioneer will bid on your behalf to obtain the lot as cheaply as possible as allowed by other bids and reserves. To make an absentee bid you can complete a bidding form at reception, telephone us, or send us your bid by email. You should give us the maximum hammer price you are prepared to pay, remembering to take into account the buyer's premium and any taxes and charges payable on top of the hammer price.

Absentee bids must be submitted by close of business on the day before the sale. If identical bids are submitted, the person who bid first will take precedence.

TELEPHONE BIDDING - You can take part in the sale by bidding over the telephone. Telephone lines must be booked by close of business on the day before the sale and are allocated on a first-come-first-served basis.

ONLINE BIDDING - Bidding can be done through EasyLive Auctions or the-saleroom.com. Bidding on these sites is directly through the relevant platforms and will incur extra commission charges. Please refer to the individual bidding websites for their individual terms and conditions.

PAYMENT - Payment will be accepted, if you are a successful bidder, by bank transfer direct into our bank account, by debit card issued in the name of the Buyer by a UK bank and registered to a UK billing address, by all major UK issued credit cards issued in the name of the Buyer and registered to a UK billing address (up to £1000), or in cash up to £8,000 (subject to relevant money laundering regulations). The name of the bank account holder should match the name of the buyer. Payment may also be made by sterling personal cheques drawn on a UK bank account and made payable to 'Parker Fine Art Auctions Ltd', however Lots paid for by this method cannot be collected until your cheque has cleared. Payment can be made and purchases collected during the auction. All accounts must be settled within 14 days of the sale. Accounts not paid within 14 days will automatically be subject to an interest charge (not exceeding 1.5% per month on the total amount due). Monies from wire transfers and cheques must be cleared into our account for 24 hours before items may be collected.

If the buyer has failed to collect within a period of two months (from sale date), Parker Fine Art Auctions reserve the right to re-enter the uncollected items through auction, to recover the cost of storage and associated costs. At this time the buyer relinquishes all claims to ownership and any right to financial compensation.

COLLECTION - Before being able to collect your purchases you are required to pay the hammer price, plus the applicable charges, and obtain a receipt acknowledging payment.

Once payment for lots has been received collection or transportation of purchased lots must be made within 14 days of the sale to avoid storage charges.

We are open for collections Monday – Friday between 9am and 5pm, or by arrangement.

STORAGE - Storage charges will be levied on all lots not collected within 14 days of the sale of £5 plus VAT per lot per day.

DELIVERY - If you are arranging your own professional collection and delivery, please ensure the lot has been paid for and the transport company has full details of the items to be collected, and we have received an authorisation note.

In some circumstances some very small items may be posted for a fee, but this will be at the Auctioneer's discretion and will be subject to your own Insurance and Liability. Please contact us if you would like details of local shipping companies.

For Full terms and conditions please go to our website
www.parkerfineartauctions.com

Conditions of Sale for Public Auctions

Parker Fine Art Auctions Ltd carries out business with Bidders, Buyers and Sellers on the following conditions and on such terms, conditions and notices as may be referred to herein. All Bidders, Buyers and others participating in a public auction accept that these terms apply to the exclusion of any terms and conditions contained in any of those person's own documents even if the same purport to provide that they or some other terms prevail. Any particular public auction and/or any particular lot in an auction may be subject to different or additional terms which will be published in our auction catalogue online.

The Buyer's attention is particularly drawn to clause 24 (consumers) and clause 23 (non-consumers), which set out the extent of the Auctioneer's and the Seller's liability to the Buyer.

Please read these Conditions together with our "Information for Buyers" document, which provides additional information and terms applicable to our auctions.

1. DEFINITIONS

In these Conditions:

- (a) "Auction Terms and Conditions" means these Conditions, the Terms of Consignment and any other terms applicable to auctions conducted by the Auctioneer and notified to Buyers, Bidders and/or Sellers (as applicable);
- (b) "Auctioneer", "we", "us" or "our" etc. means the firm of Parker Fine Art Auctions Ltd or its authorised auctioneer, as appropriate;
- (c) "Conditions" means these Conditions of Sale for Public Auctions (which include the terms set out in "Information for Buyers");
- (d) "deliberate forgery" means an imitation made with the intention of deceiving as to authorship, origin, date, age, period, culture or source but which is unequivocally described in the catalogue as being the work of a particular creator and which at the date of the sale had a value materially less than it would have had if it had been in accordance with the description;
- (e) "hammer price" means the level of bidding reached (at or above any reserve) when the auctioneer brings down the hammer;
- (f) "Information for Buyers" means the document named Information for Buyers at Public Auction containing additional terms and information for Buyers available on our website at www.parkerfineartauctions.com;
- (g) "Lots" any items or group of items offered for sale by us as agents for the Seller;
- (h) "Seller" means any person that appoints us as their agent to sell Lots on their behalf;
- (i) "Terms of Consignment" means the stipulated terms and rates of commission on which we accept instructions from Sellers or their agents including those terms set out in the document named "Terms of Consignment for Public Auctions" which can be found on our website or are available upon request;
- (j) "Total Amount Due" means the hammer price in respect of the Lot sold together with any premium, Value Added Tax chargeable and any additional charges payable by a defaulting buyer under these Conditions;
- (k) "Sale Proceeds" means the net amount due to the Seller, being the hammer price of the lot sold less commission at the stated rate, Value Added Tax chargeable and any other amounts due to us by the seller in whatever capacity and however arising; "you", "your", etc. refer to the buyer as identified in Clause 3.4;
- (l) The singular includes the plural and vice versa as appropriate; and
- (m) A person includes a natural person, corporate or unincorporated body (whether or not having separate legal personality).

2. FORMATION OF CONTRACT

A contract for the sale and purchase of a Lot shall come into existence between the Seller and the Buyer on these Conditions upon acceptance by the Auctioneer of a bid by the Buyer.

3. BIDDING PROCEDURES AND THE BUYER

- 3.1 Bidders are required to register their particulars before bidding by completing a sale registration form and to satisfy any security arrangements before entering the auction room to view or bid.
- 3.2 Under the money laundering regulations in force we are required to verify the identity of all customers we transact with as well as any beneficiaries on behalf of whom they may transact. Customers who are unable to or refuse to supply required identification documents and proof of address may not be able to bid at our auctions. Copies of

customer due diligence checks will be stored for as long as it is necessary to satisfy legal requirements in an appropriate storage facility which for the avoidance of doubt may include storage solely in electronic form.

- 3.3 The maker of the highest bid accepted by the auctioneer conducting the sale shall be the buyer at the hammer price and any dispute about a bid shall be settled at the Auctioneer's absolute discretion by reoffering the Lot during the course of the auction or otherwise. The auctioneer shall act reasonably in exercising this discretion. The Auctioneer shall rule the bidding and no bid may be retracted.

- 3.4 The Buyer is the person who is successful in purchasing a Lot or Lots in accordance with these Conditions. Purchases made on behalf of a third party are the responsibility of the Buyer in the room. The Auctioneer reserves the right to bid on behalf of the Seller for any Lot and to withdraw, consolidate or divide any Lot or Lots.

- 3.5 Bidders shall be deemed to act as principals (i.e. not on behalf of or as the agent of any other person).

- 3.6 Our right to bid on behalf of the Seller is expressly reserved up to the amount of any reserve below the bottom estimate and the right to refuse any bid is also reserved.

4. INCREMENTS

Bidding increments shall be at the Auctioneer's sole discretion.

5. THE PURCHASE PRICE

The purchase price payable for a Lot is the hammer price plus a buyer's premium thereon of 25% plus VAT on the premium at the rate imposed by law and is payable in accordance with clause 7.

6. VALUE ADDED TAX.

Value Added Tax on the hammer price is imposed by law on all items affixed with a dagger or double dagger symbol. Value Added Tax is charged at the appropriate rate prevailing by law at the date of sale and is payable by buyers of relevant Lots. (Please refer to "Information for Buyers" for a brief explanation of the VAT position).7.

PAYMENT

- 7.1 Immediately a Lot is sold you will:

- (a) give to us, if requested, proof of identity, and
- (b) pay to us the total amount due in pounds sterling.

- 7.2 Any payments by you to us may be applied by us towards any sums owing from you to us on any account whatever without regard to any directions of you or your agent, whether expressed or implied.

- 7.3 In order to comply with money laundering regulations we reserve the right to require proof of source of funds and/or confirmation of the nature and source of wealth for all receipts of monies from clients directly or from third parties for payments on behalf of clients. The completion of the sale of a Lot will be postponed or cancelled at our discretion if further time is needed for investigation, or if you are in breach of your warranties as a buyer, or if we consider the sale to be unlawful or in any way cause liabilities or be detrimental to either us or the Seller.

8. TITLE AND COLLECTION OF PURCHASES

- 8.1 The ownership of any Lots purchased shall not pass to you until you have made payment in full in cleared funds to us of the total amount due.

- 8.2 You shall at your own risk and expense take away any lots that you have purchased and paid for no later than 14 working days following the day of the auction or upon the clearance of any cheque used for payment after which you shall be responsible for any removal, storage and insurance charges.

- 8.3 No purchase can be claimed or removed until it has been paid for.

9. REMEDIES FOR NON-PAYMENT OR FAILURE TO COLLECT PURCHASES

- 9.1 If any Lot is not paid for in full and taken away in accordance with these Conditions, or if there is any other breach of these Conditions, we, as agent for the Seller and on our own behalf, shall at our absolute discretion and without prejudice to any other rights we may have, be entitled to exercise one or more of the following rights and remedies:

- (a) to proceed against you for damages for breach of contract;
- (b) to rescind the sale of that Lot and/or any other Lots sold by us to you;
- (c) to resell the Lot (by auction or private treaty) in which case you shall be responsible for any resulting deficiency in the total amount due (after

- crediting any part payment and adding any resale costs). Any surplus so arising shall belong to the Seller;
- (d) to remove, store and insure the Lot at your expense and, in the case of storage, either at our premises or elsewhere;
 - (e) to charge interest at a rate not exceeding 1.5% per month on the total amount due to the extent it remains unpaid for more than fourteen working days after the sale;
 - (f) to retain that or any other Lot sold to you until you pay the total amount due;
 - (g) to reject or ignore bids from you or your agent at future auctions or to impose conditions before any such bids shall be accepted; or
 - (h) to apply any proceeds of sale of other Lots due or in future becoming due to you towards the settlement of the total amount due and to exercise a lien (that is a right to retain possession of) over any of your property in our possession for any purpose until the debt due is satisfied.
- 9.2 We shall, as agent for the Seller and on our own behalf pursue these rights and remedies only so far as is reasonable to make appropriate recovery in respect of breach of these Conditions
- 10. THIRD PARTY LIABILITY**
- 10.1 All bidders, buyers and other members of the public on our premises are there at their own risk and must note the lay-out of the accommodation and security arrangements. Accordingly neither the auctioneer nor our employees or agents shall incur liability for death or personal injury or for the safety of the property of persons visiting prior to or at a sale (except in each case as may be required by law by reason of our negligence)
- 11. COMMISSION BIDS**
- 11.1 Whilst prospective buyers are strongly advised to attend the auction and are always responsible for any decision to bid for a particular Lot and shall be assumed to have carefully inspected and satisfied themselves as to its condition and authenticity, we will if so instructed clearly and in writing execute bids on their behalf. Neither the auctioneer nor our employees or agents shall be responsible for any failure to do so.
- 11.2 Where two or more commission bids at the same level are recorded we reserve the right in our absolute discretion to prefer the first bid so made.
- 12. WARRANTY OF TITLE AND AVAILABILITY**
- 12.1 The Seller warrants to the auctioneer and you that the Seller is the true owner of the property consigned or is properly authorised by the true owner to consign for sale and is able to transfer good and marketable title to the property free from any third party claims.
- 12.2 We are acting as the agent of the Seller only and give no warranty as to the Seller's title to the Lot.
- 12.3 Save as expressly set out above, all other warranties, conditions or other terms which might have effect between the Seller and you, or us and you, or be implied or incorporated by statute, common law or otherwise are excluded to the fullest extent permitted by law.
- 13. TERMS OF SALE**
- The Seller and the Buyer acknowledge that Lots are sold subject to the stipulations of these Conditions (including the Information For Buyers) in their entirety and on the Terms of Consignment as notified to the Seller at the time of the entry of the Lot.
- 14. DESCRIPTIONS AND CONDITION**
- 14.1 Whilst we seek to describe Lots accurately, it may be impractical for us to carry out exhaustive due diligence on each Lot. Bidders are given ample opportunities to view and inspect before any sale and they (and any independent experts on their behalf) must satisfy themselves as to the accuracy of any description applied to a Lot. Bidders also bid on the understanding that, inevitably, representations or statements by us as to authorship, genuineness, origin, date, age, provenance, condition or estimated selling price involve matters of opinion. We undertake that any such opinion shall be honestly and reasonably held and accept liability for opinions given negligently or fraudulently.
- 14.2 Subject to the foregoing neither we the auctioneer nor our employees or agents nor the Seller accept liability for the correctness of such opinions and all conditions, attributions and warranties, whether relating to description, condition or quality of lots, express, implied or statutory, are hereby excluded.
- 14.3 We are not liable for damage to gilded picture frames, plaster picture frames or picture frame glass. If the Lot is, or becomes dangerous, we may dispose of it without notice to you in advance in any manner we see fit and will be under no liability for doing so. We shall not be liable for any damage to any Lot arising during the viewing, during the sale, or after the sale.
- 14.4 We act as agents only. Each Prospective Buyer by making a bid for a Lot acknowledges that they have satisfied themselves fully as to the attribution and condition of the Lot. Pictures have not been removed from their frames unless specifically mentioned in the Condition Report (as in the event the item is unsold it must be returned to the Seller in the condition it was received by us). This Condition is subject to deliberate forgeries (clause 17).
- 14.5 Private treaty sales made under these Conditions are deemed to be sales by auction for purposes of consumer legislation.
- 15. TRANSFER OF RISK.**
- 15.1 The risk in the Lot shall pass to the Buyer upon completion of the Sale by the Auctioneer.
- 15.2 We are not responsible for the correct description, genuineness or authenticity of any Lot as per these Conditions. The Buyer is deemed to have inspected each Lot and satisfied himself/herself to the condition.
- 16. OWNERSHIP OF THE LOT**
- Title to the Lot purchased will not pass to the Buyer until the Buyer has paid us in full and cleared funds the total amount due pursuant to these Conditions and we have applied such payment to the Lot.
- 17. FORGERIES**
- 17.1 Notwithstanding the preceding Condition, any Lot which proves to be a deliberate forgery (as defined) may be returned to us by you within 21 days of the auction provided it is in the same condition as when bought, and is accompanied by particulars identifying it from the relevant catalogue description and a written statement of defects. If we are satisfied from the evidence presented that the Lot is a deliberate forgery we shall refund the money paid by you for the Lot including any buyer's premium unless:
- (a) the catalogue description reflected the accepted view of scholars and experts as at the date of sale; or
 - (b) you personally are not able to transfer a good and marketable title to us,
- and in the event of clause 17.1 (a) or 17.1 (b) applying you shall have no rights under this condition.
- 17.2 The right of return provided by this clause 17 is additional to any right or remedy provided by law or by these Conditions.
- 18. PRIVACY NOTICE.**
- We will hold and process any personal data in relation to you in accordance with our current privacy policy, a copy of which is available on our website parkerfineartauctions.com
- 19. GENERAL**
- 19.1 We shall have the right, at our discretion, to refuse admission to our premises or attendance at our auctions by any person.
- 19.2 Any right to compensation for losses liabilities and expenses incurred in respect of and as a result of any breach of these Conditions and any exclusions provided by them shall be available to the Seller and/or the Auctioneer as appropriate.
- 19.3 Such rights and exclusions shall extend to and be deemed to be for the benefit of employees and agents of the Seller and/or the auctioneer who may themselves enforce them.
- 19.4 Special terms may be used in catalogue descriptions of particular classes of items in which case the descriptions must be interpreted in accordance with any glossary appearing in the catalogue.
- 20. NOTICES**
- Any notice to any buyer, seller, bidder or viewer may be given by first class mail or email in which case it shall be deemed to have been received by the addressee 48 hours after posting or in the event of email upon actual receipt of such email.

21. **NO WAIVER**
Any indulgence extended to bidders, buyers or sellers by us notwithstanding the strict terms of these Conditions or of the Terms of Consignment shall affect the position at the relevant time only and in respect of that particular concession only; in all other respects these Conditions shall be construed as having full force and effect.
22. **LIABILITY**
Nothing in these Conditions shall limit any liability which cannot legally be limited, including liability for:
(a) death or personal injury caused by negligence;
(b) fraud or fraudulent misrepresentation;
(c) breach of the terms implied by section 12 of the Supply of Goods Act 1979 (title and quiet possession) however attention is drawn to clause 12.2.
23. **LIMITATION OF LIABILITY TO NON-CONSUMERS**
(This clause 23 applies only to non-Consumers)
- 23.1 Subject to clause 22, and unless you are an individual purchasing or selling the Lot for purposes which are wholly or mainly outside your trade, business, craft or profession (**Consumer**), our total liability to either the Buyer of the Seller (as appropriate) shall not exceed the value of the Lot sold by the Seller to the Buyer. The following types of loss are wholly excluded by us:
(a) loss of profits;
(b) loss of sales or business;
(c) loss of agreements or contracts;
(d) loss of anticipated savings;
(e) loss of or damage to goodwill, and
(f) indirect or consequential loss.
- 23.2 Subject to clause 22, all conditions, warranties and other terms which might otherwise be implied by statute, common law or the law of equity, including without limitation the terms implied by sections 13 to 15 of the Sale of Goods Act 1979, are, to the fullest extent permitted by law, expressly excluded.
- 24.1 **LIMITATION OF LIABILITY TO CONSUMERS**
(This clause 24 applies only to Consumers)
- 24.1 Consumers are reminded that we act only as an agent of the Seller and are not the supplier of the Lots.
- 24.2 If the Auctioneer or the Seller fails to comply with these Conditions, it or they shall be responsible for loss or damage you suffer that is a foreseeable result of its or their breach of these Conditions or its or their negligence, but neither the Auctioneer nor the Seller shall be responsible for any loss or damage that is not foreseeable. Loss or damage is foreseeable if they were an obvious consequence of the breach or if they were contemplated by the Agent and/or the Seller and the Buyer at the time this contract was entered into.
25. **RIGHT TO CANCEL**
- 25.1 If you purchase a Lot at a virtual auction (an auction which is held online only so that there is no possibility for you to attend the auction in person) and you are contracting as a Consumer and the Seller of a Lot is a trader, you will have a statutory right to cancel your purchase of that Lot if you change your mind for any reason. The provisions below set out your legal right to cancel in those circumstances.
- 25.2 You may cancel your purchase at any time from the date of our order confirmation up to the end of the fourteenth day after the day of collection of the lot by you or the person specified by you for collection.
- 25.3 To cancel your purchase, you must inform us of your intention to cancel it. You can do this by completing the model cancellation form which can be found on our website. If you use this method we will email you to confirm that we have received your cancellation. Alternatively, you send us your cancellation notice by any other method and then your cancellation is effective from the date you send us the email or post the letter to us.
- 25.4 If you exercise your right to cancel your purchase, you will receive a refund of the total amount due paid for the Lot in accordance with clause 7. When exercising the cancellation right, you must return the lots to us immediately at your own cost (as set out below).
- 25.5 You are entitled to a reasonable opportunity to inspect the Lots (which will include removing them from their packaging and inspecting them). At all times, you must take reasonable care of the Lots and must not let them out of your possession. They must remain in original, untouched condition. If you are in breach of your obligations to take reasonable care of the Lots in this clause 25.4, we will have a claim against you and may deduct from the refund costs incurred by us as a result of the breach.
- 25.6 This provision does not affect your statutory rights.
- 25.7 The cancellation right described in this clause 25 is in addition to any other right that you might have to reject a Lot, for instance because it is a deliberate forgery as set out in clause 17 above.
26. **EXERCISING THE RIGHT TO CANCEL**
- 26.1 Where you have validly returned a Lot to us under your right of cancellation described in clause 25, we will refund the full amount paid by you for the Lot.
- 26.2 Please note that we are permitted by law to reduce your refund to reflect any reduction in the value of the Lot, if this has been caused by your handling of the Lot in a way contrary to the conditions specified in these terms or which would not be permitted during a pre-sale exhibition held prior to an auction. If we refund you the price paid before we are able to inspect the Lot and later discover you have handled the Lot in an unacceptable way, you must pay us an appropriate amount.
- 26.3 You will be responsible for returning the Lot to us at your own cost.
- 26.4 We will process any refund due to you within the deadlines below:
(a) if you have collected the Lot but have not returned it to us: fourteen days after the day on which we receive the Lot back from you or, if earlier, the day on which you provide us with evidence that you have sent the Lot back to us; or
(a) if you have not collected the Lot or you have already returned the Lot to us: 14 days after you inform us of your decision to cancel your contract.
- 26.5 We will refund you using the same means of payment that you used for the transaction.
- 26.6 Legal ownership of a Lot will immediately revert to the Seller if we refund any such payment to you.
- 27.1 **DISPUTES**
Any dispute not herein provided for shall be settled at the sole discretion of the Auctioneer.
28. **FORCE MAJEURE**
We shall not be in breach of these Conditions nor liable for the delay in performing, or failure to perform, our obligations under these Conditions (or otherwise) if such a delay or failure results from events, circumstances or causes beyond our reasonable control.
29. **ENTIRE AGREEMENT**
These Conditions constitute the entire agreement between the parties and supersede and extinguish all previous agreements, promises, assurances warranties representations and understandings between them, whether written or oral, relating to its subject matter. Except as set out in these Conditions, no variation of these Conditions shall be effective unless it is in writing and signed by the parties (or their authorised representative).
30. **IMAGES**
Prior written consent must be sought by the buyer or any other party for the use of any images, illustrations and written materials produced by or for Parker Fine Art Auctions Ltd relating to a lot or sale, including the contents of a catalogue. Copyright for any of the aforementioned will remain the property of Parker Fine Art Auctions Ltd, subject to the provisions of the Copyright, Design and Patents Act 1988. Parker Fine Art Auctions Ltd and the seller make no representations or warranties that the buyer of a lot will acquire any copyright to other reproduction rights to it.
31. **GOVERNING LAW AND JURISDICTION**
These Conditions shall be governed by and construed in accordance with English law and the parties irrevocably submit to the exclusive jurisdiction of the English courts.



PARKER
FINE ART AUCTIONS
Hawthorn House | East Street | Farnham | Surrey | GU9 7SX

Thursday 10th July 2025

01252 20 30 20
info@parkerfineartauctions.com
parkerfineartauctions.com

