

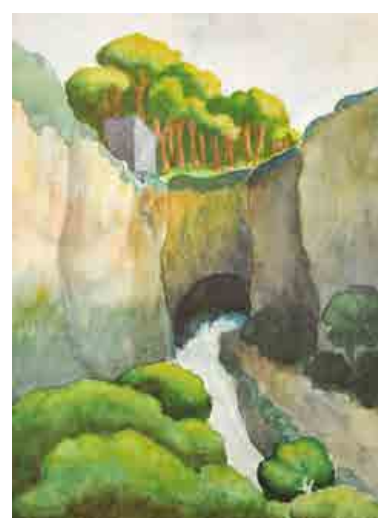


PARKER

FINE ART AUCTIONS

Fine Paintings & Frames Sale

Thursday 11th September 2025
at 11am



Forthcoming Fine Paintings & Jewellery Sale

9th October 2025



Consign to our sales:

No commission or
illustration charges

Just £15 (+VAT) per lot
and 1.5% (+VAT) loss
and damage waiver



PARKER

FINE ART AUCTIONS

Hawthorn House | East Street | Farnham | Surrey | GU9 7SX

Fine Paintings & Frames Sale

Thursday 11th September 2025

Paintings starting at 11am

Frames starting at 2pm

VIEWING

Friday 5th September 10am to 4pm

Saturday 6th September 10am to 2pm

Sunday 7th September 10am to 2pm

Monday 8th September 10am to 4pm

Tuesday 9th September 10am to 4pm

Wednesday 10th September 10am to 4pm

Thursday 11th September from 9am

Telephone bids and absentee bids will be accepted until 9am on the day of the sale.

01252 20 30 20 | info@parkerfineartauctions.com

LIVE ONLINE BIDDING AT



the-saleroom.com



easyliveauction.com

Each lot subject to a buyer's premium of 25% + VAT (plus additional online bidding fees where applicable)



Key to cover illustrations

Lot 251	Lot 236	Lot 35	Lot 274	Lot 280	Lot 296
Lot 32	PARKER FINE ART AUCTIONS Fine Paintings & Frames Sale Thursday 11th September 2025 at 11am	Lot 266	Lot 302	PARKER FINE ART AUCTIONS 01252 20 30 20 info@parkerfineartauctions.com parkerfineartauctions.com	Lot 338
Lot 170	Lot 201	Lot 117	Lot 339	Lot 348	Lot 371
Lot 131	Lot 81	Lot 232	Lot 402	Lot 441	Lot 448
		Lot 180	Lot 469	Lot 473	Lot 503

Parker Fine Art Auctions Ltd

Hawthorn House, East Street, Farnham, GU9 7SX

Registered in England 12554522 VAT Registration No. 347 2406 07

All terms and conditions are on our website parkerfineartauctions.com

Please note: droite de suite is paid by the vendor



Photography by PRC Digital office@prcdigital.co.uk

Old Master & European Paintings Pre 1850



1. After Samuel Hieronymus Grimm (1733-1794) Swiss/British
 "Welladay! is this my son Tom!"
 Printed for Carington Bowles
 Mounted, unframed
 Overall 13.75" x 10" (34.9 x 25.4cm)
 And the companion piece
 "Be not amaz'd dear mother, It is indeed your daughter Jane", a pair (2)
 £200-£300



2. After James Gillray (1757-1815) British
 "Wife and No wife"
 A set of five lithographs
 Numbered 2182/2500 in pencil
 Unframed
 Overall each 16.5" x 20" (41.9 x 50.8cm) (5)
 £100-£150



3. After Robert Dighton (1752-1814) British
 "The Lamplighter"
 Engraving
 Published by N Carpenter
 In a darkwood frame
 Overall 14" x 10.25" (35.5 x 26cm)
 £100-£150



4. After James Gillray (1757-1815) British
 "Wide-Awake"
 Etching
 Published by Hannah Humphrey
 7.75" x 6.5" (19.7 x 16.5cm)
 £100-£150



5. After Robert Sayer (act.1750-1780) British
 "Summer", "Autumn" and "Winter"
 A set of three engravings
 Overall (each) 14" x 10" (35.5 x 25.4cm) (3)
 £100-£200



6. W E Beastall (18th-19th Century) British
 "Negroes Sunday-Market at Antigua"
 Aquatint (cut to image with later inscription on the mount)
 13" x 16.75" (33 x 42.5cm)
 £200-£300



7. After Sawrey Gilpin (1733-1807) British
 "The Battle of Chevy Chase"
 Engraved by Philip Dawe
 Overall 18.75" x 26.25" (47.6 x 66.6cm)
 And the companion piece "The Battle of Chevy Chase" after J Graham, a pair (2)
 £100-£200



8. After Jean-Baptiste Huet (1745-1811) French
 "L'arrivee de la Fermiere"
 Engraving
 8.25" x 11.5" (20.9 x 29.2cm)
 And a companion piece, a pair (2)
 £100-£150



9. After Joshua Reynolds (1723-1792) British
 "Lady Smith and Her Children"
 Engraved by Francesco Bartolozzi
 11.25" x 9" (28.6 x 22.8cm)
 £100-£150



10. After Jean-Francois Janinet
 (1752-1814) French
 "Mademoiselle Calombe L'Ainee"
 Print
 In a fine carved giltwood frame
 Overall 7.5" x 6" (19.1 x 15.2cm)
 Notes: This depicts Marie Therese Theodore
 Rombocoli-Riggieri
 £150-£250

11. After Alain Manesson Mallet (1630-1706) French
 “De L’Amerique”
 Engraving
 Overall 7.25” x 4.6” (18.4 x 11.8cm)
 Together with a map by the same hand (2)
 £100-£200



12. Guilielmus Blaeu (1600-1699) Dutch
 “Chili” (Chile)
 Map
 14” x 18.75” (35.5 x 47.7cm)
 And another map of Chili by Hendrik Hondius (1573-c.1651)
 14.5” x 18.75” (36.8 x 47.7cm) (2)
 £100-£200



13. **Robert Smirke (1752-1845) British**
 'Children Playing'
 Ink
 Inscribed on a label verso
 3.5" x 4.6" (8.9 x 11.8cm)
 Provenance: Agnew's, London,
 '130th Annual Watercolour Exhibition', 2023, No.25
 £150-£250



14. **David Cox (1783-1859) British**
 A Mill at Rhiewlas, Montgomeryshire
 Watercolour
 Signed and inscribed
 7.75" x 11.75" (19.7 x 29.8cm)
 £100-£200



15. **David Cox (1783-1859) British**
 'A View of Harlech with Figures and Sheep'
 Watercolour
 Inscribed on a label verso
 4.4" x 4.6" (11.2 x 11.7cm)
 Provenance: Andrew Wylde, 2007;
 W/S Fine Art Ltd, London,
 10th December 2007
 £200-£300



16. 19th Century English School
Bust Portrait of a Man with a Turban
Pencil heightened with white
Indistinctly signed and dated 1855
Unframed 17" x 11.5" (43.2 x 29.3cm)
£100-£150



17. After John Smith (1652-) British
"Ego Dilecto Meo"
Pencil
Signed with initials 'MK' and dated 1797
16.5" x 13.5" (41.9 x 34.2cm)
£100-£200



18. J Harris (19th Century) British
Portrait of a Man
Miniature
Inscribed and dated Jan 7 1808 verso
Oval 2.6" x 2.1" (6.7 x 5.3cm)
CITES: FF4DBKU8
£100-£150



19. Early 19th Century English School
Bust Portrait of a Lady
Chalk
Mounted, unframed 24.25" x 18.75" (61.5 x 47.8cm)
£100-£150

20. **William Alexander (1767-1816) British**
Figures in a Barn Doorway at Parsonage House,
Near Addington
 Watercolour and pencil
 Inscribed on a label verso
 7.25" x 10.25" (18.4 x 26cm)
 Provenance: Agnew's, London, 'Watercolours and Drawings',
 6th March 2001, Cat No.28
£100-£200



21. **Early 19th Century English School**
A Pair of Caricature Studies
 Watercolour and wash
 Each titled
 Unframed 11.5" x 18.75" (29.2 x 47.7cm) (2)
£100-£200



22. **After Giovanni Battista Busiri (1698-1757) Italian**
Figures in a Classical Landscape
 Gouache
 7.5" x 11.25" (19.1 x 28.6cm)
£100-£200





23. **Jean Restout Le Jeune (1692-1768) French**
A Kneeling Figure
 Chalk
 Inscribed
 17" x 19.75" (43.2 x 50.2cm)
£100-£200



24. **Attributed to Tomasso Bigatti (18th-19th Century) Italian**
Neo Classical Figures, with an external frieze
 Watercolour on vellum
 Overall 18.5" x 19.5" (47 x 49.5cm)
£100-£200

25. **19th Century Italian School**
Figures by a Mill House
 Oil on canvas
 25.25" x 38" (64.1 x 96.5cm)
£80-£120



26. Manner of Claude Le Lorrain (1600-1682) French
 Figures by an Inn
 Oil on canvas
 31.5" x 39.25" (80 x 99.7cm)
 £400-£600



27. Circle of Joseph Mallord William Turner
 (1775-1851) British
 A Classical River Landscape
 Oil on unstretched canvas
 24" x 34" (61 x 86.3cm)
 £200-£300



28. 19th Century French School
 Still Life of Flowers and Urns
 Oil on canvas
 27.5" x 47.25" (69.8 x 120cm)
 £400-£600





29. After Francesco Guardi (1712-1793) Italian
The Grand Canal, Venice
Oil on canvas
20" x 24" (50.8 x 61cm)
£200-£300



30. After Balthasar Nebot (20th Century) Spanish/British
"The Topiary Exhedra with a View of the Obelisk, Hartwell House, Buckinghamshire"
Oil on canvas
Unframed 53.75" x 72" (136.5 x 183cm)
£100-£150



31. After Georg Christian Sibbern (20th Century) European
Figures in a River Landscape
Oil on canvas
46" x 55.75" (116.8 x 140.2cm)
£100-£150



32. 17th Century Fontainebleau School
The Finding of Moses by Pharaoh's Daughter
Oil on panel
25" x 30" (63.5 x 76.2cm)
£1500-£2000



33. 19th Century English School
Bust Portrait of a Gentleman
Oil on canvas
In a carved giltwood frame
21.5" x 17.5" (54.6 x 44.4cm)
£300-£400



34. Manner of Peter Lely (1618-1680) Dutch/British
Portrait of a Lady
Oil on canvas
Painted oval
In a painted carved wood frame
30" x 25" (76.2 x 63.5cm)
£300-£400



35. 18th Century English School
"The Reverend Canon Rogers as a Schoolboy Dressed as a Sultan, with a Parrot"
Oil on canvas
Inscribed on a label verso
In a carved giltwood frame
30" x 25" (76.2 x 63.5cm)
£1500-£2000



36. Circle of Benjamin Robert Haydon (1786-1846) British
Head of a Sibyl
Oil on canvas
Oval 17.5" x 13.5" (44.4 x 34.4cm)
£150-£250



37. Late 18th Century English School
Portrait of Philippe I, Duc d'Orleans
Oil on canvas
Inscribed on labels verso
28.25" x 22.75" (71.7 x 57.8cm)
£200-£400



38. **Manner of Nicholas Hilliard (1547-c.1619) British**
Portrait of a Gentleman in a Ruff
Oil on panel
Oval 9.75" x 7.25" (24.2 x 18.3cm)
£300-£400



39. **John Downman (1750-1824) British**
Bust Portrait of a Man holding a Hat
Oil on copper
Signed and inscribed 'pinxt' and dated 1778
Oval 9.1" x 7.6" (23 x 19.4cm)
£500-£700



40. 18th Century European School
Courtiers in an Interior
Oil on joined paper laid down
Overall 36" x 52" (91.5 x 132.1cm)
£100-£150



41. Manner of George Morland (1763-1804) British
Landscape with Cattle
Oil on canvas
Inscribed 'Isle of Wight' verso
8.5" x 10" (21.6 x 25.4cm)
£100-£200



42. Manner of Patrick Nasmyth (1787-1831) British
Figures on a Path
Oil on panel
9" x 10.25" (22.8 x 26cm)
£100-£200

43. Circle of James Arthur O'Connor
(1792-1841) Irish
Figures in a Landscape
Oil on panel
Bears an inscription and date 1835 verso
9" x 12" (22.8 x 30.5cm)
£200-£300



44. 17th Century Italian School
Still Life of Fruit on a Ledge
Oil on canvas
Unframed 22" x 26.5" (55.8 x 67.3cm)
£600-£800



45. Circle of Jacob Jordaens (1593-1678) Flemish
The Nativity
Oil on canvas
Unframed 36" x 27.5" (91.5 x 69.8cm)
£400-£600



46. Manner of Carlo Dolci (1616-1686) Italian
Christ with a Crown of Thorns
Oil on canvas
11.75" x 9.75" (29.8 x 24.7cm)
£400-£600



47. After Peter Paul Rubens (1577-1640) Flemish
Self Portrait
Oil on board
17.25" x 13.75" (43.8 x 35cm)
£100-£150



48. After Franz van Mieris (1635-1681) Dutch
"The Oyster Meal"
Oil on metal
10" x 8.25" (25.4 x 20.9cm)
£200-£300



49. 17th Century Italian School
Laban Searching for His Idols
Oil on canvas
Unframed 64" x 43.5" (162.6 x 110cm)
£800-£1200



50. After Jean-Baptiste Greuze (1725-1805) French
The Fortune Teller
Oil on canvas
15" x 18" (38.1 x 45.7cm)
And the companion piece, a pair (2)
£600-£800



51. Daniel Turner (act.1782-c.1828) British
'View of Thames River towards St Paul's, Somerset House on left'
Oil on panel
Signed and dated 1807
11.75" x 19" (29.8 x 48.2cm)
£1500-£2000

British and European Paintings Pre 1900



52. **John Frederick Lewis (1805-1876) British**
 "Artillery Barracks, Tophana" (Constantinople)
 Lithograph
 Unframed 11.25" x 14.5" (28.6 x 36.8cm)
 And a companion piece, a pair (2)
£100-£200



54. **Samuel Palmer (1805-1881) British**
 "The Herdsman's Cottage"
 Etching
 3.75" x 3" (9.5 x 7.6cm)
£300-£400



53. **After R Rogerson (19th Century) British**
 "American Express Trains", Leaving the Junction
 Chromolithograph
 In a maple frame
 13.75" x 22" (34.8 x 55.8cm)
£100-£150





55. After Giovanni Pivdor (1812-1872) Italian
"Venezia"

A set of eight lithographs of Venice by Kier
6.5" x 11.15" (16.5 x 28.2cm)

Together with a frontispiece

Provenance: Percy F. Jones Esq (9)

£200-£300



56. Paul Cesar Helleu (1859-1927) French
 A Set of Twenty Four Prints from the 'Gallery of Portraits'
 Contained in an album
 (plate size) 12.25" x 7.5" (31.1 x 19.1cm) (24)
 £500-£700

57. **Emma Sandys (1843-1877) British**
 "The River Wicklow"
 Charcoal
 Signed, and inscribed verso
 Unframed (rolled) 18" x 24" (45.7 x 61cm)
 £150-£250



58. **John Atkinson (1863-1924) British**
 "Harvesting"
 Watercolour
 Signed, and inscribed on the mount
 9.5" x 13" (24.1 x 33cm)
 £200-£300



59. **Alexandre Francia (1815-1884) French**
 "Boats by a Jetty"
 Watercolour
 Signed, and inscribed on a label verso
 15" x 27" (38.1 x 68.6cm)
 £200-£300





60. Charles Wirgman (1832-1891) British
Chinese Figure Study
Pencil
5.5" x 6.5" (14 x 16.5cm)
And four other studies by the same hand (three unframed) (5)
£100-£200

61. John Abernethy (Thomas) Lynas-Gray
(1869-c.1940) British
"A Cricket Match in The Lane"
Watercolour
Signed and dated '96, and inscribed on a label verso
17" x 29" (43.2 x 73.7cm)
Provenance: Peter Arnold, Bucks
£100-£150



62. Charles Henry Weigall (1794-1877) British
"Red Riding Hood"
Watercolour
Inscribed on the slip, and inscribed on a label verso
21.5" x 29.75" (54.6 x 75.6cm)
£100-£150



63. M. Johnson (19th Century) British
A River Landscape with a Figure and Cattle
Watercolour
10" x 14.75" (25.4 x 37.5cm)
And two others, a set of three (3)
Two signed and dated 1842
£100-£150





64. K Macaulay (19th-20th Century) British
A Loch Scene
Watercolour
Signed
12.25" x 23.5" (31.1 x 59.7cm)
£100-£150



65. 19th Century English School
Figures before a Church
Watercolour and wash
9.25" x 12.5" (23.5 x 31.8cm)
Contained in an album with a quantity of watercolours and
prints by various hands (q)
£100-£150



66. Arthur de Breanski
(19th-20th Century) British
"A Sunny Day on the Thames"
Watercolour
Signed
13.5" x 19.5" (34.3 x 49.5cm)
And the companion piece, a pair (2)
£100-£150



67. William Mathew Hale (1837-1929) British
'Mardyke Ferry, Bristol'
Watercolour
Inscribed and dated 1875 on a label verso
9.75" x 14.25" (24.7 x 36.2cm)
Provenance: Christie's, 17th July 1997, Abbott and Holder Ltd; Private Collection
£100-£200



68. George Houston (1869-1947) British
Figures on a Beach
Watercolour
Signed and dated 1890
10.25" x 14" (26 x 35.5cm)
£100-£150

69. **Late 19th Century Asian School**
 Elephants with Howdahs
 Watercolour
 Indistinctly signed and with motifs
 16.25" x 24" (41.2 x 61cm)
 £100-£200



70. **William Henry Mason (1838-1929) British**
 "Timber Wharf on the Rother"
 Watercolour
 Inscribed on the mount, and inscribed on labels verso
 15.25" x 27.25" (38.7 x 69.2cm)
 £100-£200



71. **Richard Beavis (1824-1896) British**
 A Fisherman by a Lock Gate at Sunset
 Watercolour
 Signed and dated 1869
 8.25" x 13.25" (20.9 x 33.6cm)
 £100-£150





72. Noel Harry Leaver (1889-1951) British
A Middle Eastern Archway
Watercolour
Signed
11" x 15" (27.9 x 38.1cm)
And another by the same hand (2)
£200-£300



73. Circle of William Widgery (1826-1893) British
A Moorland Scene
Pastel
10.5" x 48.5" (26.7 x 123.2cm)
£100-£200



74. Jean Louis Forain (1852-1931) French

"Homme au Fauteuil"

Ink and wash

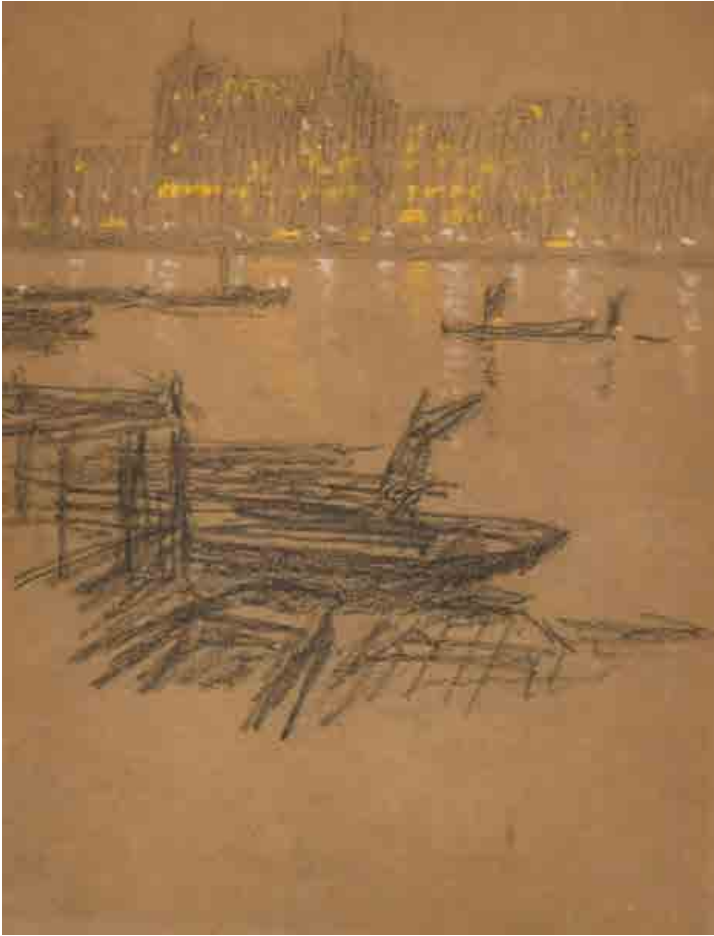
Inscribed on a label verso

9" x 6.75" (22.8 x 17.1cm)

Provenance: Connaught Brown, London

Notes: Being sold with an inscribed photograph of authenticity from Mme. F V Forain, 13th March 2006

£200-£400



75. Circle of James Abbott McNeill Whistler (1834-1903) American
Thames View
Chalk
7.5" x 5.75" (19 x 14.6cm)
£100-£200



76. Late 19th Century Dutch School
Bust Portrait of a Bearded Man
Watercolour
Painted circular 3.75" x 3.75" (9.6 x 9.6cm)
And the companion piece, a portrait of a lady (2)
£100-£150

77. G R Moretti (19th-20th Century) Italian
 Cardinals Discussing a Map
 Watercolour
 Signed
 21" x 14" (53.3 x 35.5cm)
 £200-£300



78. Charles Edward Wilson (1853-1941) British
 "Blowing Bubbles"
 Watercolour
 Signed, and inscribed on a label verso
 14.25" x 9.25" (36.2 x 23.5cm)
 £400-£600



79. Alfred Edward East
(1844-1913) British
"San Giorgio Maggiore, Venice"
Watercolour
Signed
10" x 14.25" (25.4 x 36.1cm)
£200-£300



80. Alfred Edward East
(1844-1913) British
A Wooded Landscape at Dusk
Oil on canvas
Signed
18" x 24" (45.7 x 61cm)
£200-£400



81. Ellen Maria Ladell (1853-1912) British
Still life of Fruit, with a domed glass taxidermy of birds
Oil on board
Signed
18" x 14" (45.7 x 35.5cm)
£1200-£1800



82. **Henri Place (1812-1880) French**
Figures on a Stone Bridge
 Oil on canvas
 Signed
 Painted oval 11.75" x 15.75" (29.8 x 40cm)
£100-£200



83. **Joseph Thors (1835-1920) British**
A River Landscape, with a church in the distance
 (believed to be Weybridge)
 Oil on panel
 Signed
 8.5" x 10.25" (21.6 x 26cm)
£100-£200



84. **Hermanus Jan Hendrik Rijkelijkhuiizen (1813-1883) Dutch**
A River Landscape
 Oil on panel
 Signed
 9.5" x 11.5" (24.1 x 29.2cm)
£100-£200



85. **After Edgar Degas (20th Century)**
"Freize of Dancers"
 Oil on canvas
 27.5" x 78" (69.8 x 198cm)
£100-£150



86. **Circle of John Crome (1768-1821) British**
A Windmill at Night
 Oil on panel
 14" x 15.25" (35.5 x 38.8cm)
£150-£250

87. Circle of Camille Pissarro (1830-1903) French
 "Pontoise"
 Oil on canvas
 Inscribed verso
 6.5" x 9.5" (16.5 x 24.1cm)
 Provenance: Stern Gallery; Lord Cormack collection
 £200-£400



88. Manner of Gustave Courbet (1819-1877) French
 Still Life of Flowers in a Vase
 Oil on canvas
 20" x 27" (50.8 x 68.6cm)
 £200-£400



89. Henry John Boddington (1811-1865) British
 A River Landscape with Cattle by a Cottage
 Oil on canvas
 22.25" x 27" (56.5 x 68.6cm)
 £300-£400





90. **Joseph Horlor (1809-1887) British**
 "Llanstephan Castle and Sands, Carmarthenshire"
 Oil on board
 Inscribed in pencil verso
 9.5" x 13.75" (24.2 x 34.8cm)
£150-£200



91. **Anthony de Bree (1856-1921) British**
 A Stable Interior with Figures and Horses
 Oil on panel
 Signed and dated 85
 6" x 8" (15.2 x 20.3cm)
 And the companion piece, a pair (2)
£200-£300



92. **19th Century European School**
 A Whaling Scene
 Oil on board
 Inscribed 'Nieuport. B'
 7" x 9" (17.8 x 22.8cm)
£200-£300



93. Eilert Adelsteen Normann (1848-1918) Norwegian
A Fjord Scene
Oil on canvas
Signed
19" x 29.25" (48.2 x 74.3cm)
£2000-£4000



94. Circle of William Breakspeare (1855-1914) British
Bust Portrait of a Lady
Oil on canvas
22" x 17" (58.4 x 43.2cm)
£300-£400



95. Samuel Henry Baker (1824-1909) British
"A Village Street, Herefordshire"
Oil on canvas
Signed, and inscribed verso
30.25" x 24.25" (76.8 x 61.5cm)
£300-£400

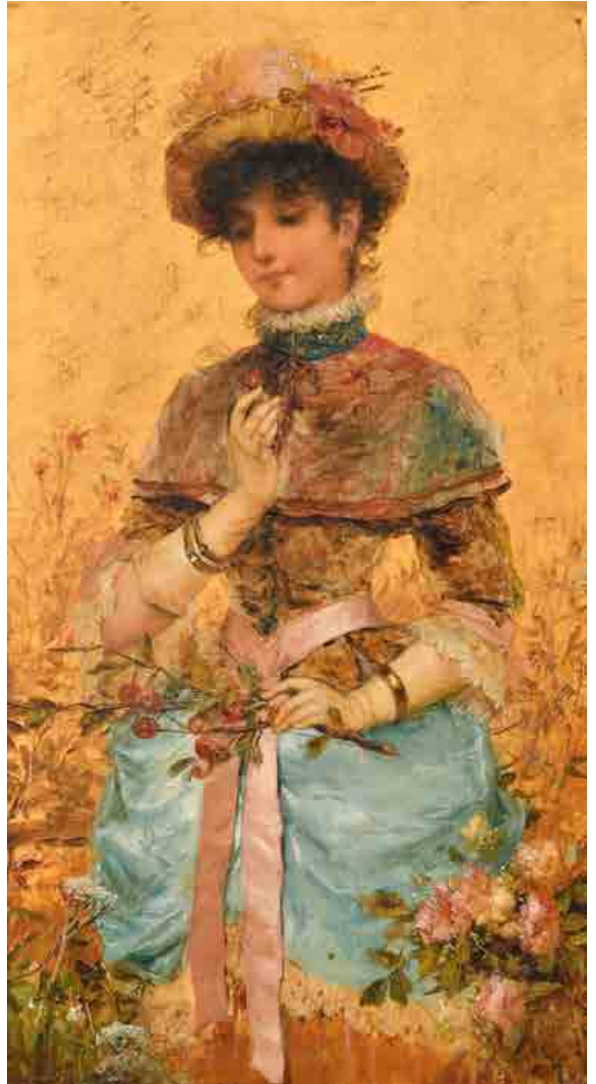


96. Circle of Charles Baxter (1809-1879) British
Companions
Oil on panel
Arched 29.75" x 24.75" (75.5 x 60.3cm)
£150-£250



97. Daniel Munro (fl.1840-1880) British
"The New Scholar"
Oil on panel
Inscribed on a label verso
12" x 10" (30.5 x 25.4cm)
£100-£200

98. H Ballheim (act.c.1850-c.1880) European
An Elegant Lady Picking Flowers
Oil on gold ground panel
Inscribed on a plaque, and inscribed on a label verso
14.5" x 8.25" (36.8 x 20.9cm)
£600-£800



99. 19th Century English School
The Letter
Oil on canvas
36" x 28" (91.5 x 71.1cm)
£400-£600



100. Circle of Frederick Leighton (1830-1896) British
Bust Portrait of a Lady
Oil on canvas laid down
9" x 7.75" (22.8 x 19.7cm)
£100-£200



101. 19th Century English School
Half Length Portrait of a Seated Man
Oil on canvas
Unframed 30" x 25" (76.2 x 63.5cm)
£100-£200



102. Early 19th Century English School
Portrait of Nathaniel Stilgoe
Oil on canvas
Inscribed on a label verso
Unframed 24" x 19.75" (61 x 50.1cm)
Notes on label: "Painting of Mr Stilgoe, father of Zachariah W Stilgoe, who married Ann, daughter of William Denchfield of Burton House, Aylesbury, Buckingham".
Nathaniel Stilgoe (1795-1867), Zachariah Walden Stilgoe (1829-1878) and Ann Biggs Denchfield (1827-1891)
£100-£200



103. 19th Century English School
Bust Portrait of a Lady in Grecian Costume
Oil on canvas laid down
Unframed 25.75" x 19.75" (65.4 x 50.1cm)
£100-£200



104. 19th Century English School
Half Length Portrait of a Naval Officer
Oil on canvas
44" x 34.5" (111.8 x 87.7cm)
£300-£500



105. Robert Inerarity Herdman (1829-1888) British
A Seated Lady
Oil on canvas
Inscribed verso
20.5" x 16" (52.1 x 40.6cm)
£150-£250



106. **James Seymour Adams (fl.1883-1888) British**
 'Member of the Commons'
 Oil on canvas
 Signed
 16" x 24" (50.8 x 61cm)
 £200-£300



107. **Alfred Provis (1818-1890) British**
 "Her Firstborn"
 Oil on canvas
 Signed and dated 1869
 Inscribed on the slip
 14" x 20.25" (35.5 x 51.4cm)
 £250-£350



108. **Edward Charles Williams (1807-1881) British**
 Figures in a Coastal Scene
 Oil on panel
 12" x 16.25" (30.5 x 41.2cm)
 £150-£250



109. Barbara MacKay (19th-20th Century) British
The Letter
Oil on canvas
Signed and dated 1896
37.5" x 39.5" (95.3 x 100.3cm)
£1500-£2000



110. **Lazzaro Pasini (1861-1949) Italian**
Mending the Nets
 Oil on canvas
 Signed
 19.25" x 27" (48.8 x 68.6cm)
£300-£500



111. **John Brandon Smith (1848-1884) British**
A Fisherman in a River Landscape
 Oil on canvas
 Signed
 18" x 32" (45.7 x 81.3cm)
£250-£350



112. **Edmund John Neimann (1813-1876) British**
 "Eton College"
 Oil on canvas
 Inscribed on a plaque
 24" x 36" (61 x 91.5cm)
£500-£700



113. **Thomas Spinks (1847-1927) British**
 "Summer Afternoon"
 Oil on canvas
 Signed and dated 1881, and inscribed on a plaque
 20" x 30" (50.8 x 76.2cm)
£400-£600

Marine Paintings

114. William Lionel Wyllie (1851-1931) British
 "Seagulls"
 Etching
 Signed in pencil
 11.75" x 8.25" (29.8 x 20.9cm)
 £80-£120



115. After Charles Heaphy (1820-1881) British/New Zealander
 "Part of Lambton Harbour, In Port Nicholson, New Zealand"
 Lithograph after T Allom
 Overall 17" x 21" (43.2 x 53.3cm)
 Note: An explorer, Heaphy was the first soldier of the New Zealand armed forces to be awarded a Victoria Cross for gallantry
 £100-£150



116. After Louis LeBreton (1818-1866) French
 "Le Clipper Americain Electric"
 Printed by Lemerrier & Cie
 In a maple frame
 14.5" x 23" (36.8 x 58.4cm)
 £100-£150



117. **Charles Dixon (1872-1934) British**
"Off the Customs House"
Watercolour
Signed, inscribed and dated 1922
15.5" x 30" (39.4 x 76.2cm)
£2500-£3500



118. Circle of William Callow (1812-1908) British
 "Coast Scene with Shipping"
 Watercolour
 Inscribed verso
 5" x 7.5" (12.7 x 19cm)
 And another by the same hand (2)
 £100-£200



119. Frederick Miller (1850-1917) British
 An Estuary Scene at Dusk
 Watercolour
 Signed and dated 1880
 12.5" x 18.25" (31.7 x 46.3cm)
 £150-£200



120. David Mellor (20th Century) British
 'Clipper Ship Thermopylae'
 Oil on canvas
 Signed and dated 1984, and inscribed in pencil verso
 17.5" x 19.5" (44.4 x 49.5cm)
 £150-£250

121. 19th Century English School
Shipping in Heavy Waters
Oil on board
4.4" x 6.4" (11 x 16.2cm)
£200-£300



122. David James (1853-1904) British
"Evening"
Oil on canvas
Signed and dated '91, and signed and inscribed verso
18" x 30" (45.7 x 76.2cm)
£400-£600

Sporting and Animalia Paintings



123. After A M Gauci (19th Century) British
"Hereford Steer"
Printed by Norman & Co, London
Overall 15.5" x 21" (39.3 x 53.3cm)
£100-£150



124. Manner of Ramsay Richard Reinagle (1775-1862) British
Full Cry
Engraving
11.25" x 22.5" (28.6 x 57.2cm)
£100-£150



125. After Francis Calcraft Turner (1782-1846) British
"Nonpareil"
Engraved by George Hunt
In a maple frame
Overall 16" x 23" (40.6 x 58.4cm)
£100-£200



126. **Edmund Blampied (1886-1966) British**
Canine Couple in Evening Dress
 Lithograph
 Signed in pencil
 Mounted, unframed 13" x 10" (33 x 25.4cm)
£100-£200



127. **Boris O'Klein (1893-1985) French**
"Vous voulez me dire quelque chose?"
 Etching
 Signed and inscribed in pencil
 8.25" x 12" (20.9 x 30.5cm)
 And two others by the same hand (3)
£100-£150



128. **Vic Andrews (1922-2013) British**
"Ostriches in the Kalahari at Sunset"
 Watercolour
 Signed, and inscribed on a label verso
 21.5" x 33" (54.6 x 83.8cm)
 Provenance: The Tryon Gallery Ltd, London
£200-£400



129. **19th Century English School**
The Frightened Horse
 Watercolour
 25.5" x 30.25" (64.7 x 76.8cm)
£200-£300



130. **George Edward Lodge (1860-1954) British**
Hare in a Landscape
 Watercolour
 Signed
 5" x 8.25" (12.7 x 20.9cm)
£200-£300



131. George Wright (1860-1944) British
Huntsman and Hound
Oil on canvas
Signed with initials
9" x 7" (22.8 x 17.7cm)
£1000-£1500



132. **Johann Christian Ludwig Tunica (1795-1868) German**
 Studies of a Rabbit
 Oil on paper laid down
 Signed in pencil
 Unframed 11" x 16" (27.9 x 40.6cm)
£200-£300



133. **After John Frederick Herring Jnr (1815-1907) British**
 Horses and Chickens in a Stable Yard
 Oil on board
 Bears initials
 10" x 13" (25.4 x 33cm)
£200-£300

British and European Paintings Post 1900



134. Kurt Franz (19th-20th Century) European
"Nord Licht Über Der Tundra"
Lithograph
Signed and inscribed in pencil
Unframed 29.75" x 22" (75.6 x 55.8cm)
And five others by the same hand (6)
£250-£350



135. Henri Focillon (1881-1943) African/American
A Head Study
Linocut
Signed and inscribed in pencil
7.75" x 5.75" (19.7 x 14.6cm)
£150-£250



136. Fernand Leger (1881-1955) French
"Mourlot"
Lithograph
Inscribed and dated 1949 on a label verso
8.25" x 6" (21 x 15.2cm)
£200-£300



137. Marc Chagall (1887-1985) Russian/French
"Woman Juggler"
Lithograph
Inscribed on a label verso
12.5" x 9.5" (31.8 x 24.2cm)
Provenance: William Weston Gallery, London
£200-£400



138. John Northcote Nash (1893-1977) British
"Threshing"

Woodcut printed by Rampant Lion Press in a limited edition
Numbered 136/150 in pencil, and inscribed on a label verso
4.85" x 7.9" (12.5" x 20cm)
£100-£150



139. Edmund Blampied (1886-1966) British
"Night Time, Dieppe"

Etching
Signed in pencil and inscribed with 'f'
7.75" x 11" (19.7 x 27.9cm)
£200-£300



140. Ethelbert White (1891-1972) British
"The Old Barn"

Woodcut
5.5" x 8" (14 x 20.3cm)
£200-£300

141. John Hall Thorpe (1874-1947) Australian
 "Marigolds"
 Woodcut
 Signed and inscribed in pencil
 9" x 11.4" (22.8 x 29cm)
 £200-£300

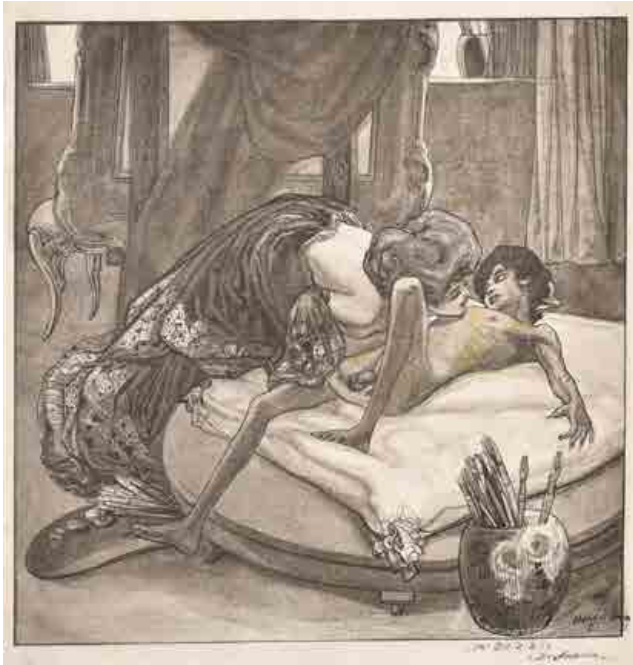


142. Edward Wadsworth (1889-1949) British
 "Yorkshire"
 Woodcut
 4.2" x 5.6" (10.7 x 14.5cm)
 £200-£300



143. Henry Moore (1898-1986) British
 "Standing Figures"
 1950 - Version 1"
 Lithograph (ref. Cramer 14)
 5.75" x 8.75" (14.6 x 22.2cm)
 £200-£300





144. Franz von Bayros (1866-1924) Austrian
 "Oh! Du-u-u"
 Photogravure
 Signed and inscribed
 Unframed 6.5" x 6.25" (16.5 x 15.8cm)
 £100-£150



145. William Lee Hankey (1869-1952) British
 "In the Garden"
 Etching with blind stamp
 Signed in pencil
 8.75" x 7" (22.2 x 17.8cm)
 £100-£200



146. Wassily Kandinsky (1866-1944) Russian
 Untitled
 Wood engraving
 8" x 6.5" (20.3 x 16.5cm)
 £100-£200



147. Clare Leighton (1898-1989) British
 "Snow Shovellers, New York"
 Wood engraving printed by The Curwen Press
 Inscribed on a label verso
 8" x 6" (20.3 x 15.2cm)
 £100-£150



148. Eric Ravilious (1903-1942) British
 "Children in Park"
 Wood engraving
 6.5" x 4.75" (16.5 x 12.1cm)
 £200-£300



149. Eric Ravilious (1903-1942) British
 "Boy Bird Nesting, 1927"
 Wood engraving
 3.5" x 5.25" (8.9 x 13.3cm)
 £200-£300



150. John Copley (1875-1950) British
 "Bagnanti"
 Etching
 Signed in pencil, and inscribed on a label verso
 14" x 8.5" (35.5 x 21.6cm)
 £100-£150



151. William Strang (1859-1921) British
 "Music"
 Etching
 Signed in pencil
 11.85" x 9.7" (30 x 24.7cm)
 £100-£150



152. Carl Josef Bauer (1897-1989) German
Semi Nude
Etching
Inscribed in pencil
11.75" x 9.75" (30.2 x 24.7cm)
£100-£150



153. John Piper (1903-1992) British
"Castles on the Ground"
A pair of lithographs framed as one
Each 7.5" x 4.5" (19 x 11.4cm) (2)
£100-£200



154. Eric Gill (1882-1940) British
"Quod est Salomonis" together with "Fuge Dilecti"
Woodcuts
Framed as one, each 5.5" x 2.5" (14 x 6.4cm) (2)
£100-£200

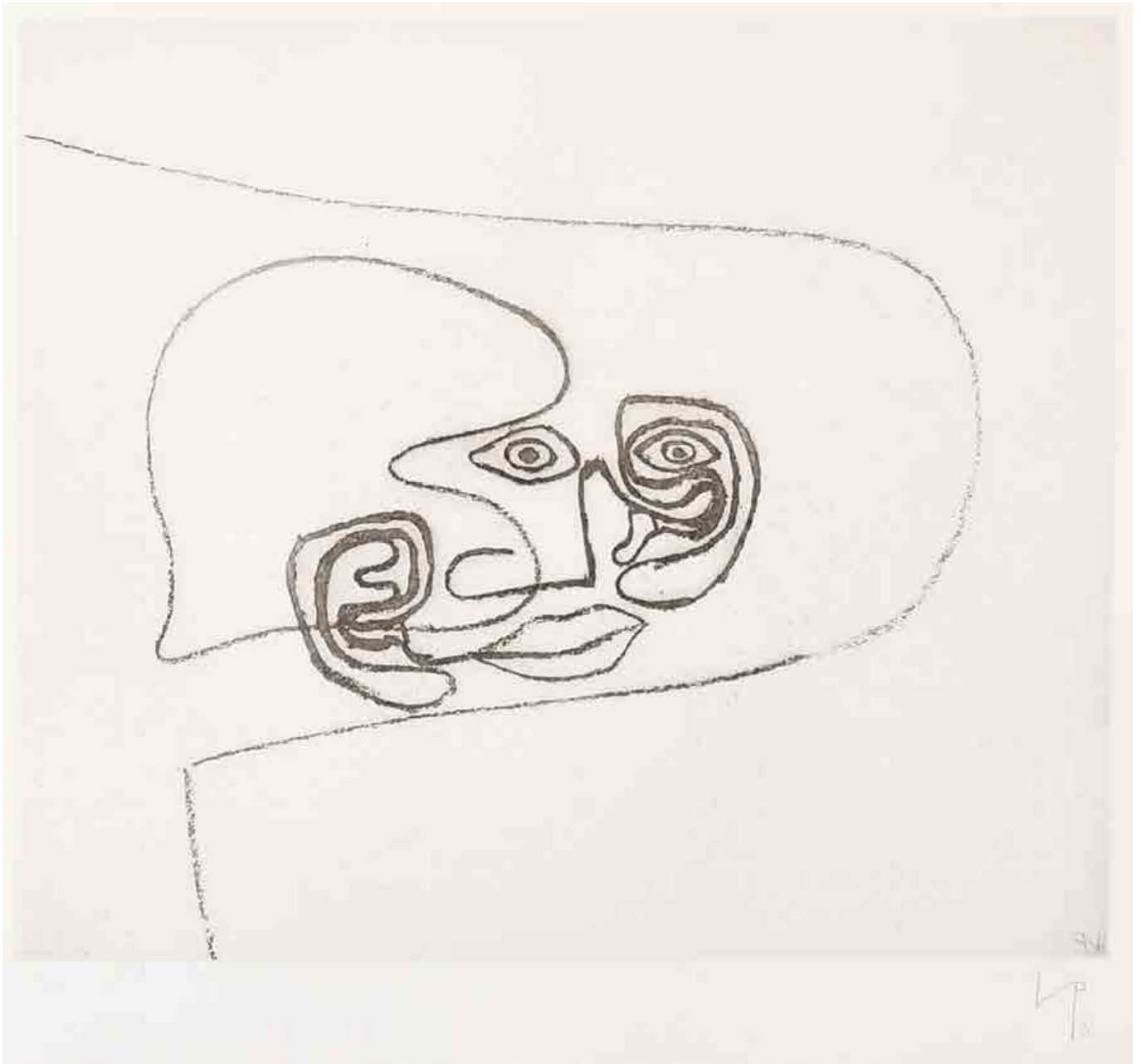
Joe Tilson

155. Joe Tilson (1928-2023) British
 “Stele for Dionysos”
 Mixed media
 Studio Marconi 1981
 Signed and numbered 7/100
 Overall 22.5” x 9.5” x 2” (57.1 x 24.1 x 5.1cm)
 Provenance: Tom Tom Gallery, London
 £200-£400



156. Joe Tilson (1928-2023) British
 “Conjunction Blackbird, Zara”
 Woodblock
 Signed, dated 2011 and numbered 6/55 in pencil,
 and inscribed on a label verso
 22” x 30” (55.8 x 76.2cm)
 Provenance: Alan Cristea Gallery, London;
 Royal Academy of Arts Summer Exhibition, 2001
 £100-£150

Victor Pasmore



157. Victor Pasmore (1908-1998) British

"Metamorphosis (Linear Motif) 8"

Etching aquatint

Signed with monogram, dated '76, and numbered 15/55 in pencil

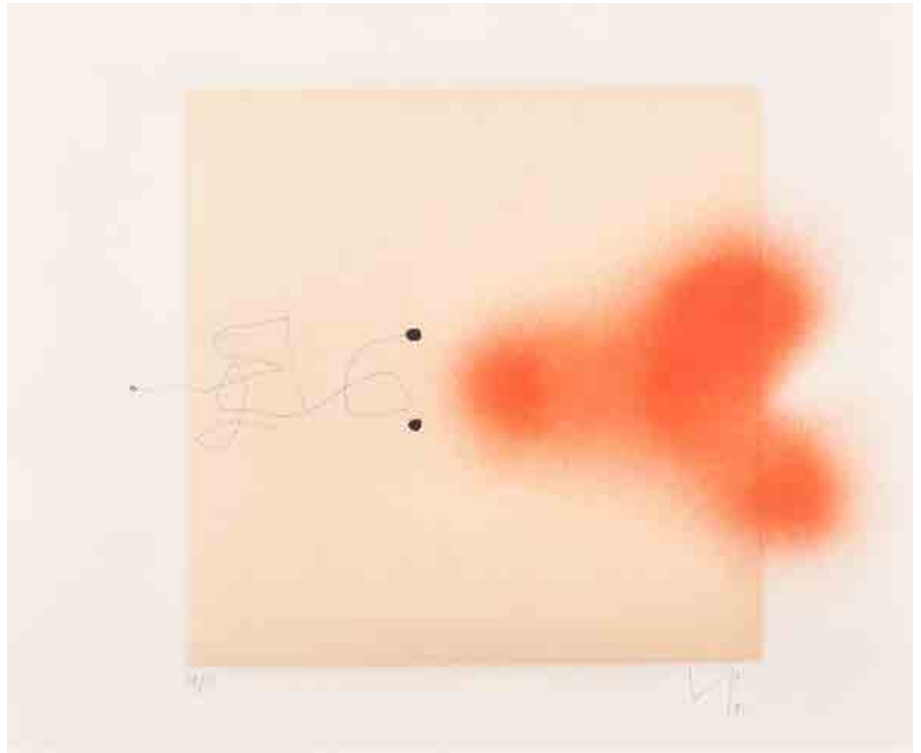
And inscribed on labels verso

16" x 17.5" (40.6 x 44.4cm)

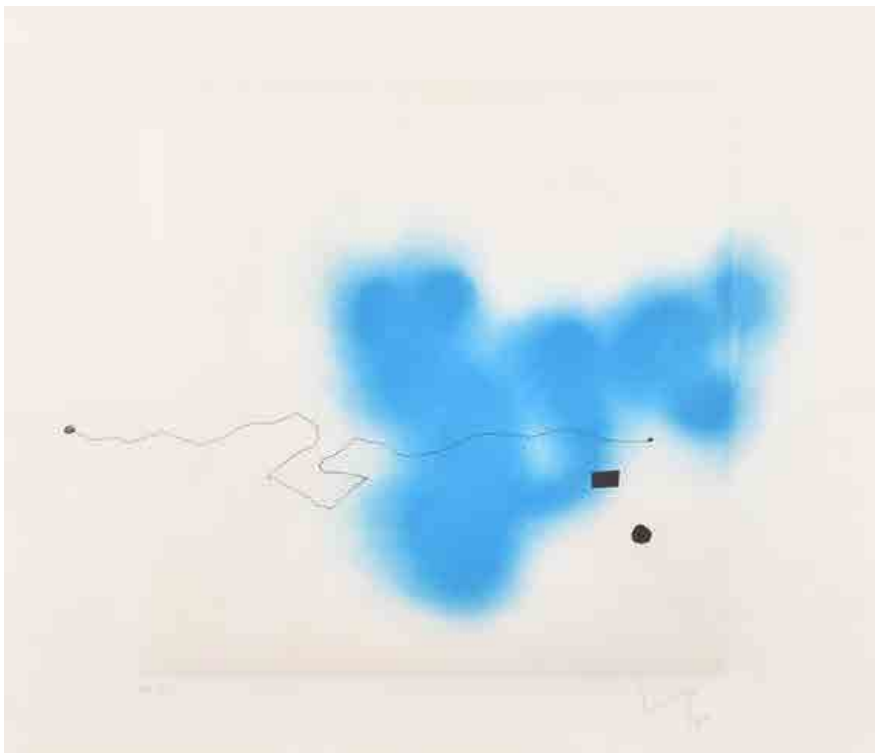
Provenance: Marlborough Fine Art (London) Ltd, December 2017

£500-£700

158. **Victor Pasmore (1908-1998) British**
 "Birthday 1 (Orange), 1997"
 From the 90th Birthday Suite
 Etching aquatint
 Signed with monogram, dated '97 and numbered
 14/35 in pencil, and inscribed on a label verso
 Overall 15.25" x 19.25" (38.7 x 48.8cm)
 Provenance: Marlborough Graphics, Marlborough
 Fine Art (London) Ltd, 11th April 2008
£500-£700

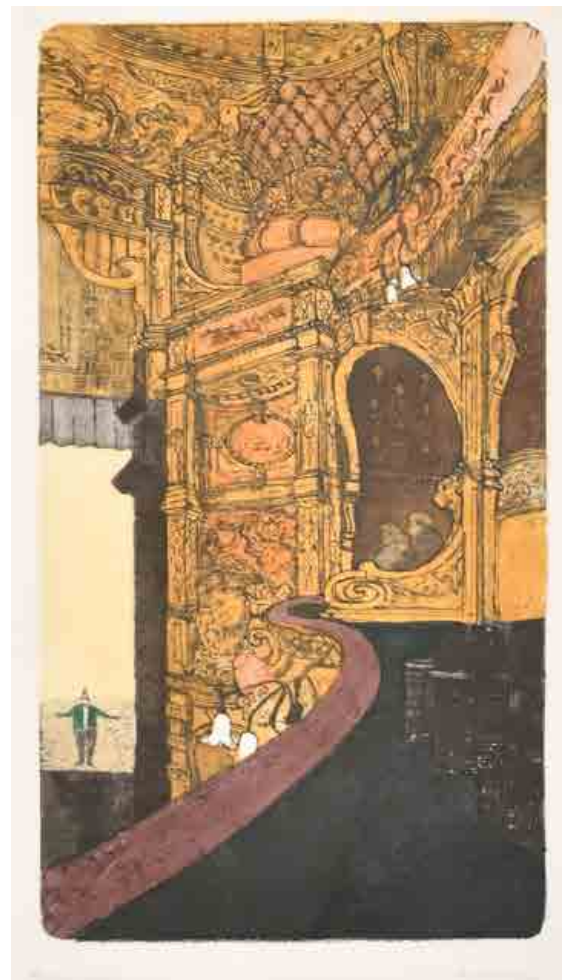


159. **Victor Pasmore (1908-1998) British**
 "Birthday 2 (Royal Blue), 1997"
 From the 90th Birthday Suite
 Etching aquatint
 Signed with monogram, dated '97 and numbered
 19/35 in pencil, and inscribed on a label verso
 Overall 15.25" x 19.25" (38.7 x 48.8cm)
 Provenance: Marlborough Graphics, Marlborough
 Fine Art (London) Ltd, 11th April 2008
£500-£700





160. Richard Beer (1928-2017) British
 Untitled
 Lithograph
 Signed in pencil
 11.8" x 15.75" (30 x 40cm)
 £100-£150



161. Richard Beer (1928-2017) British
 "Hackney Empire"
 Etching aquatint
 Signed, inscribed and numbered 2/25 in pencil
 22.25" x 11.75" (56.5 x 29.8cm)
 £100-£150



162. Edwin La Dell (1914-1970) British
 "The Tower of London"
 Baynard Press for school print series
 Lithograph
 Overall 19.25" x 29.5" (48.9 x 74.9cm)
 £100-£200



163. Peter Freeth (1938-) British
 "Built Here"
 Aquatint
 Signed and inscribed, and inscribed verso
 18" x 23.5" (45.7 x 59.7cm)
 Provenance: Beardsmore Gallery, London, 10th February 2002
 £100-£150

164. Carole de Jong (20th-21st Century) British
 "Moon Rise"
 Etching in colours
 Signed, inscribed and numbered 1/25 in pencil
 6" x 13.75" (15.2 x 34.8cm)
 Provenance: University College London Hospitals
 Charity, 14th December 2010
 £100-£150



165. Beatrice Forshall (1992-) British
 "Panther"
 Hand coloured engraving
 Signed and inscribed 'A/P' in pencil
 29" x 42" (73.7 x 106.8cm)
 £200-£400



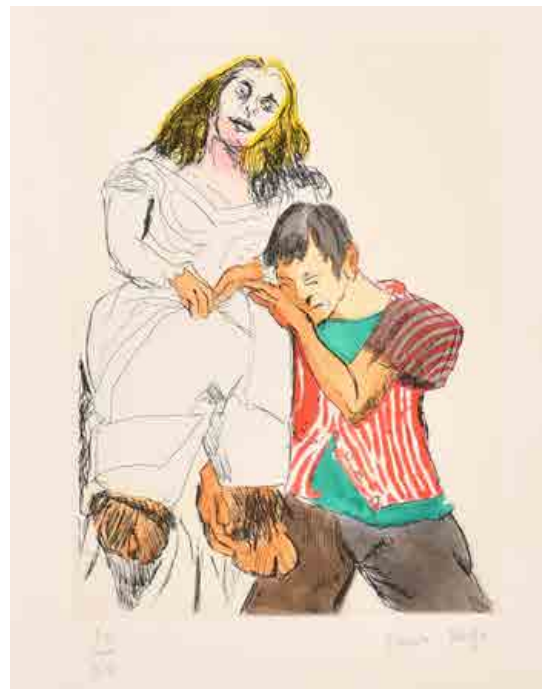
Paula Rego



166. Paula Rego (1935-2022) Portuguese/British
 "Prince Pig Gets Married to the Third Sister, 2006"
 Lithograph
 Signed and numbered 9/35 in pencil
 19.25" x 18.5" (49 x 47cm)
 Provenance: Marlborough Fine Art (London) Ltd, 12th October 2006
 £500-£700



167. Paula Rego (1935-2022) Portuguese/British
 "Lady on a Donkey and Man with a Guitar"
 Etching aquatint
 Signed and numbered 15/50 in pencil
 7.5" x 6" (19 x 15.2cm)
 £500-£700



168. Paula Rego (1935-2022) Portuguese/British
 "Woman with Goats Foot II"
 Etching aquatint
 Signed and numbered 15/50 in pencil
 7.75" x 6" (19.7 x 15.2cm)
 £500-£700

169. Paula Rego (1935-2022)
 Portuguese/British
 "Two Loves"
 Lithograph
 Signed and numbered 12/35 in pencil
 18.25" x 23" (46.3 x 58.4cm)
 Provenance: Marlborough Fine Art
 (London) Ltd, 17th September 2007
 £1000-£1500



170. Paula Rego (1935-2022)
 Portuguese/British
 'Girl Reading at a Window'
 From the 'Poetry and Story' series of the
 Jane Ayre portfolio
 Lithograph
 Signed and numbered 21/35 in pencil
 25" x 29.5" (63.5 x 74.9cm)
 Provenance: Marlborough Fine Art
 (London) Ltd, London, 13th October 2003
 £1000-£1500



171. Tunbridge Ware
"The Pantiles"

Wood

Overall 7.15" x 9.1" (18.2 x 23cm)

£100-£150



172. Marcel Pouget (1923-1985) Algeria
"Femme au Fauteuil Voltaire"

Charcoal

Signed with atelier stamp, and inscribed verso
30.5" x 24.25" (77.4 x 61.6cm)

£100-£150



173. 20th Century European School

A Standing Nude

Chalk

Signed with monogram

23.5" x 10.5" (59.7 x 26.7cm)

And a chalk drawing by another hand (2)

£100-£150

Laura Knight



174. **Laura Knight (1877-1970) British**
"Goliath from the Side"
 Pencil
 Signed with initials
 8" x 4.5" (20.3 x 11.4cm)
 Provenance: Artist's Estate; Abbott & Holder;
 George Babbington, London, 4th January 2004
£300-£400



175. **Laura Knight (1877-1970) British**
"A Dwarf Goliath"
 Chalk and pencil
 Signed and inscribed in pencil
 6.75" x 4.75" (17.2 x 12cm)
 Provenance: Kaye Michie Fine Art, Surrey, 26th February 2003
£300-£400



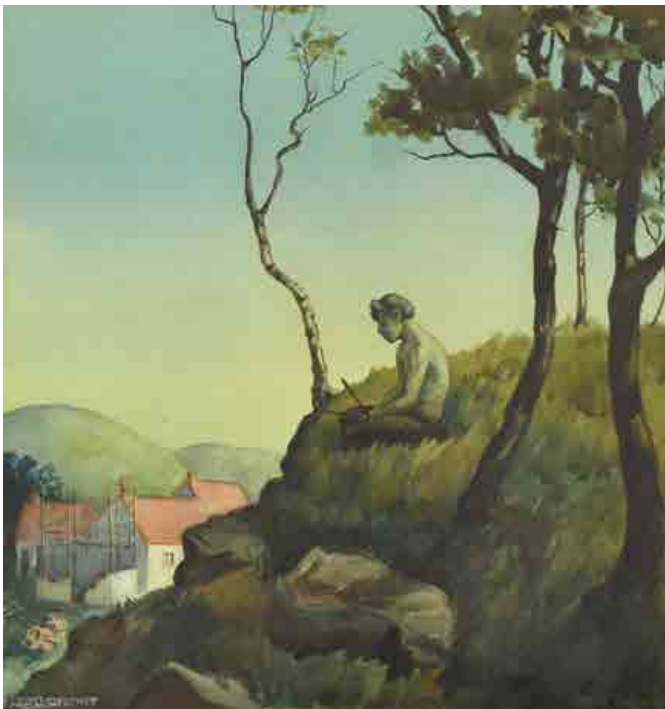
176. **Laura Knight (1877-1970) British**
Study of Two Dancers
 Pencil
 Signed with initials
 8.25" x 5.4" (21 x 13.7cm)
 Provenance: From the artist's sketchbook;
 George Babbington, London, 6th March 2003
£300-£400



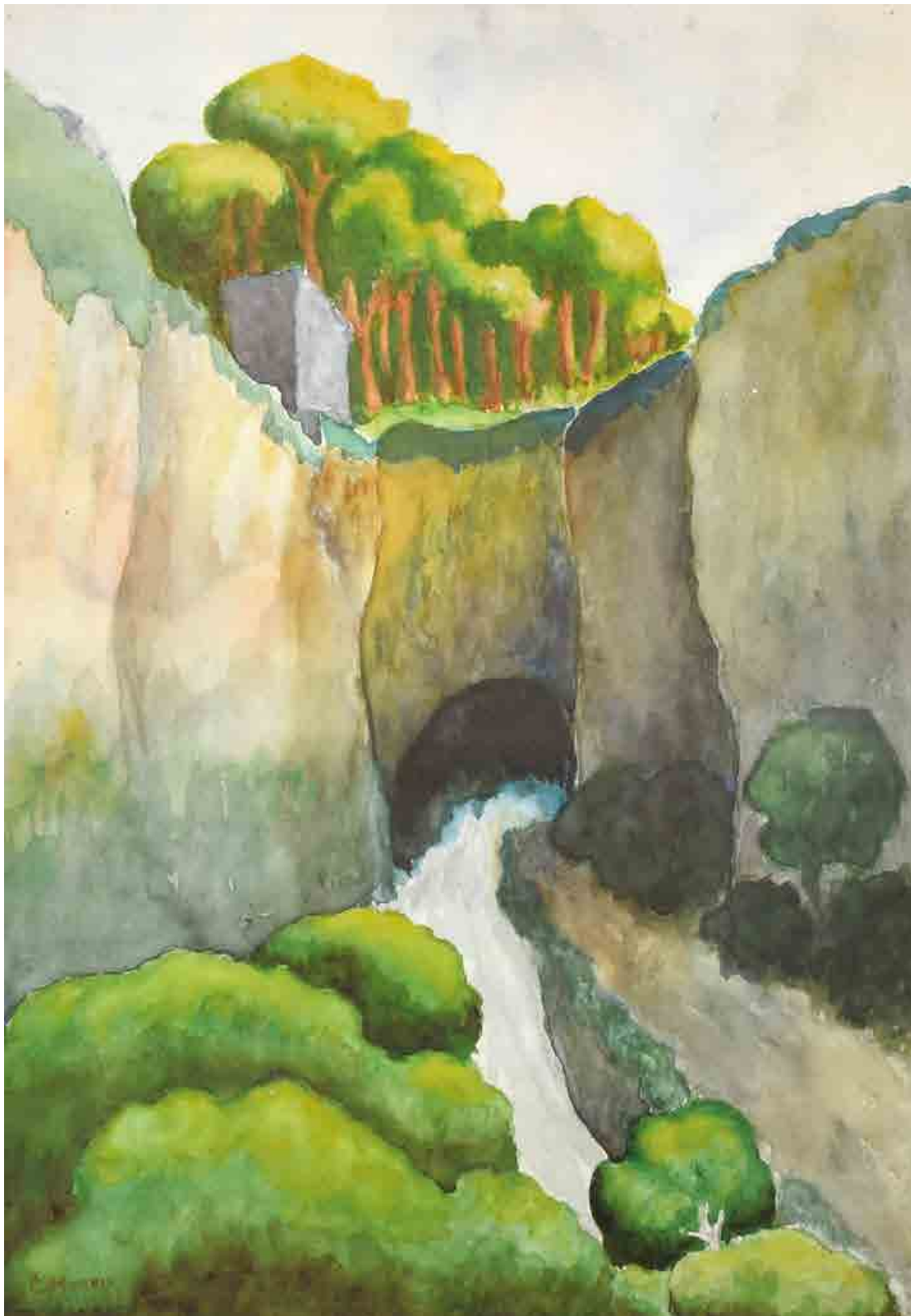
177. Robert Ludwig Richter (1904-) Austrian
Portrait Study
Black chalk
Signed and dated 12.11.18
16.25" x 12" (41.3 x 30.5cm)
£150-£250



178. William Russell Flint (1880-1969) British
Lady Dressing
Chalk
Signed
6.5" x 4.5" (16.5 x 11.4cm)
£300-£500



179. Marjorie Kingston Walker (1891-1968) British
"Pan Lamenting"
Watercolour
Signed, and inscribed on labels verso
10.5" x 10.25" (26.7 x 26cm)
£100-£200



180. Cedric Morris (1889-1982) British
 "River Mynach, Cardigan"
 Watercolour
 Signed, and signed, inscribed and dated 1934 in pencil verso
 13.5" x 9.5" (34.3 x 24.2cm)
 £600-£800



181. After Alexei Harlamoff (1840-1925) Russian
'Portrait d'une Jeune Femme'
Charcoal
Bears a signature, and inscribed on labels verso
19.25" x 14" (49 x 35.5cm)
Provenance: M S Rau Antiques, America
£400-£600



182. Donald Stuart Leslie Friend (1915-1989) Australian
 "Apprentice - Firenze"
 Ink, watercolour, pastel and chalk
 Signed, inscribed and dated '49, and inscribed on a label verso
 19" x 12.5" (48.2 x 31.8cm)
 Provenance: Redfern Gallery Ltd, London; J H Hayes Esq, 12th July 1950
 £1000-£1500



183. Ronald George Lampitt (1906-1988) British
"Make It a Quick One"
Watercolour
Signed and inscribed
12" x 15.5" (35.5 x 39.3cm)
£100-£200



184. Jack Knox (1936-2015) British
"Daybreak over the Island I"
Pastel
Signed, and inscribed on a label verso
7.5" x 10.5" (19 x 26.6cm)
Provenance: The Open Eye Gallery, Edinburgh
£100-£150



185. Joanna Wright (20th-21st Century) British
A Pair of Still Life
Watercolour and gouache
Signed, and inscribed on a label verso
12" x 12.25" (30.5 x 31.1cm) (2)
£150-£250



186. Circle of Christopher Richard Wynne Nevinson (1889-1946) British
Figure Studies
Pastel
13" x 18.5" (33 x 47cm)
£100-£150



187. Sue Howells (1948-) British
"Coastal Poppies"
Watercolour
Signed with initials
18.25" x 24.75" (46.4 x 62.8cm)
£100-£150

Antonia Black



188. **Antonia Black (1938-)** Australian/British
 "Red Amaryllis & Lilies IV"
 Gouache and sepia ink
 Signed in pencil, and inscribed on labels verso
 20" x 17.5" (50.8 x 44.4cm)
 £100-£150



189. **Antonia Black (1938-)** Australian/British
 "Red Amaryllis & Lilies III"
 Gouache and sepia ink
 Signed in pencil, and inscribed on labels verso
 20" x 17.5" (50.8 x 44.4cm)
 £100-£150



190. **Antonia Black (1938-)** Australian/British
 "Red Amaryllis & Lilies I"
 Gouache and sepia ink
 Signed in pencil, and inscribed on labels verso
 20" x 17.5" (50.8 x 44.4cm)
 Provenance: Gallery 238, Dorking
 £100-£150



191. Edward Hill Lacey (1891-1967) British
Portrait of a Lady
Pencil
Signed, and inscribed on a label verso
10" x 7.5" (25.4 x 19cm)
£100-£200



192. Madeleine Renaud (1900-1994) French
Still Life of Roses in a Green Vase
Watercolour
Signed
Oval 11.5" x 9" (29.2 x 22.8cm)
£100-£200



193. Dione Mary Ernestine Page (1936-2021) British
"On The Window Ledge"
Mixed media
Inscribed and dated 87, and inscribed on labels verso
23.25" x 30.75" (59.1 x 78.1cm)
£200-£300



194. Paul Wright (20th-21st Century) British
 "Monet Dancing before the Jungle Queen"

Boxed collage

Inscribed on a label verso

18.5" x 25.5" x 7.75" (47 x 64.8 x 19.7cm)

Provenance: Air Gallery, 1977

£100-£200

A Collection of Polish Paintings



195. **Piotr Michalowski (1800-1855) Polish**
Figures in a City Park
Watercolour, gouache and pencil
Signed in pencil
16" x 23.5" (40.6 x 59.7cm)
£500-£700



196. **Henryk Uziemblo (1879-1949) Polish**
A Man in Regional Dress
Watercolour
Signed
19.25" x 13.75" (48.9 x 34.9cm)
£300-£500



197. **Teodor Grott (1884-1972) Polish**
Woman and Wardrobe Mistress
Watercolour
Signed
13.25" x 19.25" (33.7 x 48.8cm)
£500-£700



198. **Teodor Grott (1884-1972) Polish**
Still Life of Lilacs in a Vase
Oil on board
Signed
27" x 19.25" (68.6 x 48.8cm)
£400-£600

199. Eugen Urbanski de Neczuja
(1877-1955) Polish
The Guitar Player
Oil on canvas
Signed
28.75" x 35.5" (73.1 x 90.2cm)
£2000-£3000



200. Stefan Filipkiewicz (1879-1944) Polish
Still Life of Flowers in an Urn
Oil on canvas
Signed
27.5" x 23.75" (69.8 x 60.3cm)
£1000-£1500

201. Wlastimil Hofman
(1881-1970) Polish
Girls with a Dog
Oil on board
Signed
20" x 27.5" (50.8 x 69.8cm)
£6000-£8000





202. **Stephen Bone (1904-1958) British**
 "The Late E.V. Lucas"
 Oil on canvas
 Signed and indistinctly dated, and inscribed on a label verso
 20" x 24" (50.8 x 61cm)
 Notes: Edward Verrall Lucas (1868-1938) was an author
£100-£150



203. **Arthur E Pope (1880-1974) British**
 Figures in a Courtyard, possibly Bray Almshouses
 Oil on canvas
 Signed
 Unframed 20" x 30" (50.8 x 76.2cm)
£100-£200



204. **Emilio Camillo Leopoldo Tafani (1885-1963) Italian**
 "Summer Evening"
 Oil on canvas
 Inscribed on a label verso
 17.75" x 23.75" (45.1 x 60.2cm)
£100-£200



205. **Auguste Louis Roure (1878-1936) French**
 A Mountain Path
 Oil on canvas
 Signed
 Unframed 13" x 21.5" (33 x 54.6cm)
£100-£200



206. **Eduard Leon (19th-20th Century) French**
 "Le Pont Neuf at La Seine (Paris)"
 Oil on canvas
 Signed, and signed and inscribed verso
 Unframed 18" x 25.5" (45.7 x 64.8cm)
£150-£250



207. **Circle of J J Everard (act.1845-1887) British**
 Sailing Boats off the Coast
 Oil on canvas
 20" x 27" (50.8 x 68.6cm)
£100-£150

208. Manner of George Clausen (1852-1944) British
 "Sheering in the Old Barn"
 Oil on canvas
 Bears a signature
 Inscribed on a plaque
 22" x 30" (55.8 x 76.2cm)
 £400-£600



209. Eliane Gruel (20th Century) European
 The Apprentices
 Oil on canvas
 Signed
 25.75" x 36" (65.4 x 91.5cm)
 £300-£400



210. Lionel Ellis (1903-1988) British
 Classical Figures in a Garden
 Oil on canvas
 Signed and dated '33
 19.75" x 23.75" (50.2 x 60.3cm)
 £200-£400





211. **Anna-Marie Gailly-Bernelle (1883-?) French**
A Forest
 Oil on canvas
 Signed
 17.75" x 25" (45.1 x 63.5cm)
£200-£300



212. **Philip Hugh Padwick (1876-1958) British**
A Harbour Scene
 Oil on artist's board
 Signed
 14" x 20" (35.5 x 50.8cm)
£200-£300



213. **Georgio Copeland (19th-20th Century) British**
A Surreal Battle Scene
 Oil on canvas
 Indistinctly Signed
 24' x 36' (61 x 91.5cm)
£150-£250

214. **Henryk Godlib (1892-1966) Polish**
A Bowl of Fruit
 Oil on canvas
 Signed
 20" x 24" (50.8 x 61cm)
£300-£500



215. **Early 20th Century European School**
'The Femina Cabaret, Berlin'
 Oil on board
 Indistinctly signed
 23" x 30" (58.4 x 76.2cm)
£300-£500



216. **19th Century French School**
A Barbizon Landscape, with a view of a basilica
 Oil on board
 Indistinctly signed and inscribed
 5.25" x 8.5" (13.4 x 21.6cm)
£200-£400





217. C Schonbruhen (19th-20th Century) European
Bust Portrait of a Lady
Oil on canvas
Signed and numbered 853
26" x 21" (66 x 53.3cm)
£100-£200



218. After John Singer Sargent (1856-1925) American
"Miss Hunter", San Remo
Oil on canvas
Inscribed verso
21" x 17" (53.3 x 43.2cm)
£200-£300



219. Lionel Ellis (1903-1988) British
Portrait of a Seated Lady
Oil on canvas
Signed and dated 1927
30" x 25" (76.2 x 63.5cm)
£100-£200



220. John Whitlock Codner (1913-2008) British
"Self Portrait"
Oil on panel
Signed 'John Whitlock' and dated '37, and inscribed verso
Unframed 13.75" x 9" (34.8 x 22.8cm)
£200-£300



221. Attributed to Ralph Gordon Ellis (1885-1963) British
Head of a Lady
Oil on canvas
14" x 10" (35.5 x 25.4cm)
£100-£150



222. 20th Century European School
Bust Portrait of a Nude
Oil on canvas
18" x 15" (45.7 x 38.1cm)
£300-£500



223. Arthur Croft Mitchell (1872-1956) British
"The Orange Dress"
Oil on canvas
Inscribed on a label verso
29.75" x 20" (75.6 x 50.8cm)
£200-£300



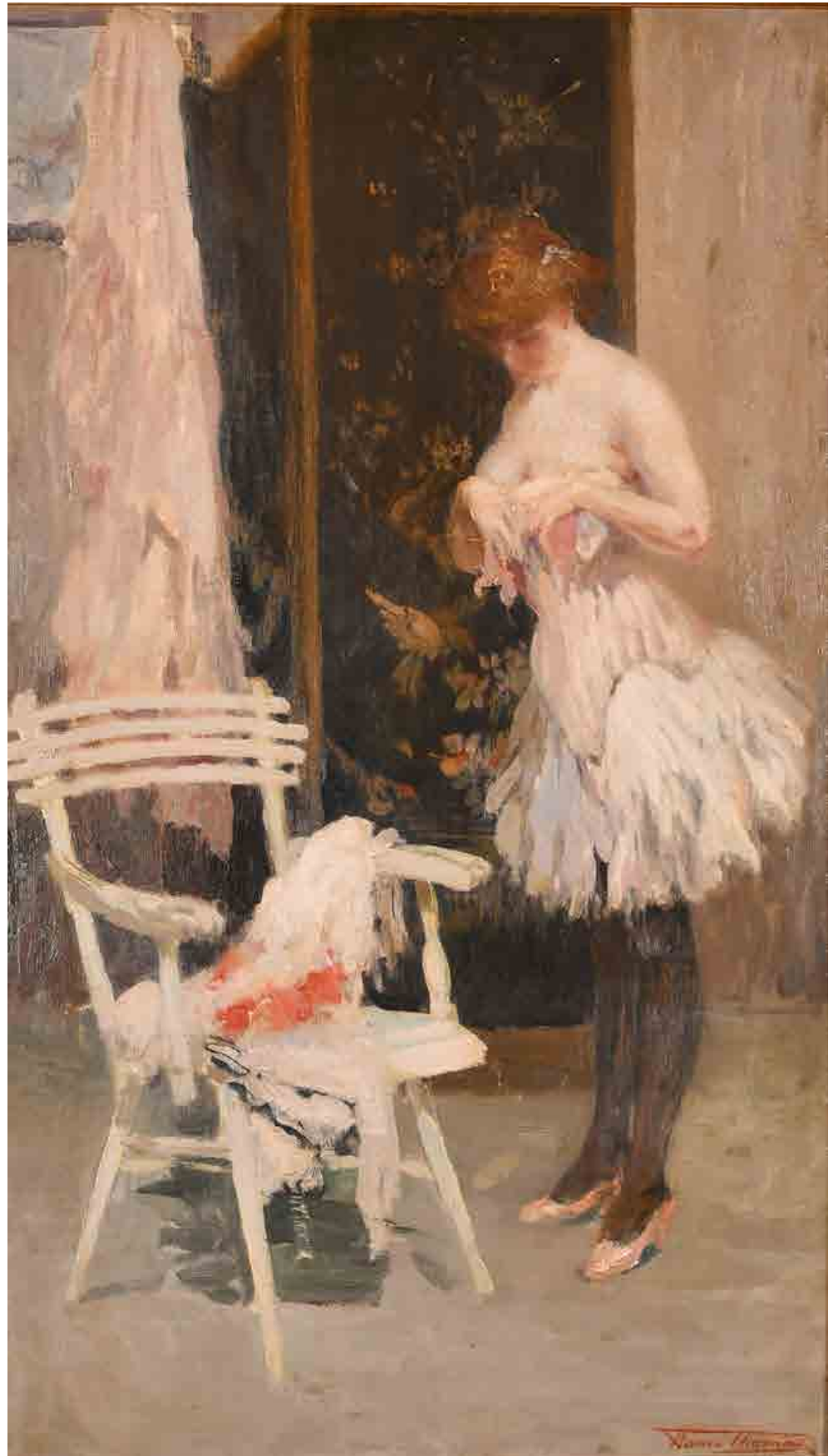
224. Willi Hans Burger-Willing (1882-1969) German
Portrait of a Farmer
Oil on board
Signed
14.25" x 12" (36.2 x 30.5cm)
£200-£300



225. William Mervyn Glass (1885-1965) British
A Highland Loch Scene
Oil on board
Signed with initials
15" x 18" (38.1 x 45.7cm)
And another by the same hand (2)
£400-£600



226. James Stuart Park
(1862-1933) British
Still Life of Roses
Oil on canvas
Signed
16" x 20" (40.6 x 50.8cm)
£600-£800



227. Henri Joseph Thomas
 (1878-1972) Belgian
 A Dancer Dressing
 Oil on canvas
 Signed
 30" x 17.5" (76.2 x 44.4cm)
 £1000-£1500



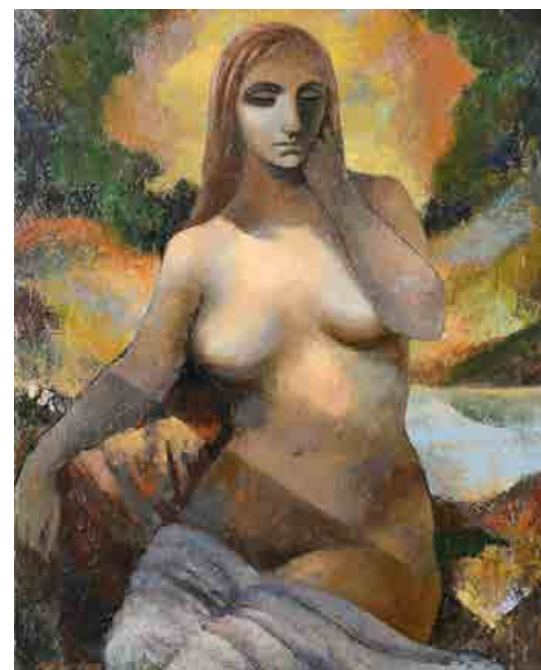
228. A Kalma (20th Century) European
 "Montmartre, Paris"
 Oil on canvas
 Signed, inscribed and dated '51, and inscribed verso
 24" x 19.75" (61 x 50.2cm)
 £200-£300



229. Attributed to Bernard Dunstan (1920-2017) British
 Standing Nude
 Oil on board
 Inscribed on a label verso
 16" x 11" (40.6 x 27.9cm)
 £200-£300



230. 20th Century European School
 A Seated Nude
 Oil on board
 24" x 21.25" (61 x 54cm)
 £100-£200



231. Christine Batchelor Nisbet (1902-1990) British
 Seated Nude
 Oil on board
 Bears a signature of John Armstrong
 Unframed 22" x 17.75" (55.8 x 45cm)
 £100-£200



232. Armand Massonet (1892-1979) Belgian
 "Deux Coqs"
 Oil on canvas
 Signed, and inscribed on a label verso
 28" x 22" (71.1 x 55.8cm)
 Provenance: Le Petite Gallerie, Brussels
 £800-£1200

233. Vladimir Mikhailovich Belsky
(1949-2017) Russian
"Fishing"
Oil on canvas
Signed in Cyrillic, and signed and
inscribed in Cyrillic verso
31.5" x 23.75" (80 x 60.2cm)
£300-£500



234. Valery Sekret (1950-) Russian
"Crimea Road in the Mountains"
Oil on canvas
Signed in Cyrillic, and signed and inscribed in Cyrillic verso
15" x 21.5" (38.1 x 54.6cm)
£300-£400



235. Valery Sekret (1950-) Russian
"Notre Dame, Paris"
Oil on canvas
Signed, and signed and inscribed in Cyrillic verso
15" x 21.75" (38.1 x 55.3cm)
£300-£400



236. Konstantin Razumov (1974-) Russian

"Drawing Lesson"

Oil on canvas

Signed in Cyrillic, and signed and inscribed in Cyrillic verso

13.75" x 19.75" (35 x 50.2cm)

£1500-£2000



237. Piotr Fillipovich Alberty (1913-1994) Russian
"Market"

Oil on board

Signed, inscribed and dated 1970 in Cyrillic verso

4.25" x 6.25" (10.8 x 15.8cm)

£100-£150



238. Viktor Fedorovich Vassine (1919-1997) Russian
"Bird Farm"

Oil on canvas

Signed in Cyrillic and dated '63, and signed and inscribed in
Cyrillic verso

30.5" x 39" (77.6 x 99.1cm)

£400-£600



239. Viktor Fedorovich Vassine (1919-1997) Russian
"Liman's Dock"

Oil on canvas

Signed in Cyrillic and dated '63, and signed and inscribed in
Cyrillic verso

25" x 34.75" (63.5 x 88.3cm)

£400-£600



240. Konstantin Razumov (1974-) Russian
 "Nude from Behind"
 Oil on canvas
 Signed in Cyrillic, and signed and inscribed in Cyrillic verso
 6" x 11.85" (15.2 x 30cm)
 £1200-£1800



241. Konstantin Razumov (1974-) Russian
 "Blue Boa"
 Oil on canvas
 Signed in Cyrillic, and signed and inscribed in Cyrillic verso
 10.75" x 13.85" (27.3 x 35.3cm)
 £2000-£3000

Olga Oreshnikov



242. Olga Oreshnikov (1962-) Russian
 "Going Shopping"
 Acrylic on paper laid down
 Signed with initials, and inscribed on a label verso
 12" x 12" (30.5 x 30.5cm)
 £300-£400



243. Olga Oreshnikov (1962-) Russian
 "Dreams of Tomorrow"
 Acrylic on paper laid down
 Signed with initials, and inscribed on labels verso
 13.25" x 9.75" (33.6 x 24.8cm)
 £200-£300



244. Olga Oreshnikov (1962-) Russian
 "Music of Love"
 Acrylic on paper laid down
 Signed with initials, and inscribed on labels verso
 17" x 11.75" (43.2 x 29.8cm)
 £300-£400

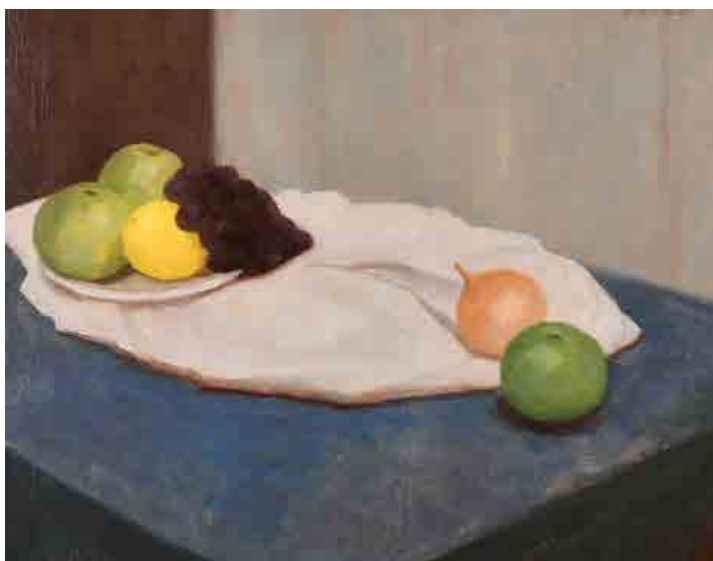
245. **Jean Thomas (1923-2019) French**
Cubes
 Oil on canvas
 Signed, and inscribed verso
 11" x 14.25" (27.8 x 36.2cm)
 £100-£150



247. **Stuart Jennings (20th Century) British**
"Portscatho"
 Oil on board
 Signed and dated July '98, and inscribed verso
 22.25" x 35.75" (56.5 x 90.7cm)
 £100-£200



249. **Hubert Arthur Finney (1905-1991) British**
Still Life on a Table
 Oil on canvas
 Signed
 In a maple frame 17.75" x 21.5" (45.1 x 54.6cm)
 Provenance: The artist's family
 £100-£150





246. **Berine Oppia** (20th Century) **European**
Still Life on a Table
 Oil on canvas
 Inscribed on the stretcher
 Unframed 18" x 21.5" (45.7 x 54.6cm)
£100-£200



248. **Philip Hemsley** (1933-2009) **British**
"Scene Near King's Lynn"
 Oil on board
 Inscribed and dated 61 verso
 Unframed 33" x 43.5" (83.8 x 100.5cm)
£100-£200



250. **John Newberry** (1934-) **British**
"The Argument"
 Oil on board
 Inscribed and dated 1966 verso
 23" x 34.5" (58.4 x 34.6cm)
£100-£150



251. Frederick Victor Bailey (1919-1996) British
Still Life of a Profusion of Flowers in a Glass Vase on a Ledge
Oil on panel
Signed
36" x 29" (91.5 x 73.7cm)
£1000-£1500



252. H J Panvelt (20th Century) Dutch
A Cottage by a River
Oil on canvas
Indistinctly signed
26.5" x 38.25" (67.3 x 97.2cm)
£150-£250



253. Michael Gilbery (1913-2000) British
Summer Flowers in a Vase
Oil on canvas
20" x 24" (50.8 x 61cm)
£200-£300



254. Michael Gilbery (1913-2000) British
Still Life of Iris and Summer Flowers in a Jug
Oil on canvas
23" x 23" (58.4 x 58.4cm)
£200-£300



255. Licio Passon (1965-) Italian

"Venezia", Sestiere de Santa Croce

Oil on panel

Signed with initials and dated '99, and signed and dated '99 verso, and inscribed on a label verso

35.5" x 27.5" (90 x 70cm)

£1000-£1500



256. Y Guillard (20th Century) European
Abstract Boats
Oil on canvas
Signed and dated '72
Unframed 25.5" x 47" (64.8 x 119.3cm)
£200-£300



257. 20th Century European School
Untitled
Oil on canvas
32" x 56" (81.3 x 142.2cm)
£200-£300



258. After Lucien Freud (1922-2011) British
"Two Sleeping Nude Figures"
Oil on board
Unframed 16.25" x 25.75" (41.3 x 65.3cm)
£200-£300

259. **Rene Bonfit (20th-21st Century) French**
 Still Life of Fruit and Flowers on a Ledge
 Oil on canvas
 Indistinctly signed, and indistinctly signed and inscribed verso
 23.5" x 29" (59.7 x 73.7cm)
 £300-£400



260. **Karoly Jacob (1826-1891) Hungarian**
 "Picnic"
 Oil on Canvas
 Inscribed on the Plaque
 23.75" x 31.5" (60.3 x 80cm)
 £100-£150



261. **Claude Rogers (1907-1979) British**
 An Impressionist Landscape
 Oil on canvas
 Signed, and inscribed on a label verso
 13" x 16" (33 x 40.6cm)
 £300-£400





262. 20th Century English School
Abstract
Oil on canvas
Indistinctly signed
Unframed 31.25" x 31.25"
(79.3 x 79.3cm)
£100-£150



263. John Harvey (1935-2023) British
"Landscape near Relubbus, Penzance"
Oil on canvas
Signed with initials, and inscribed on labels verso
23.75" x 23.75" (60.3 x 60.3cm)
Provenance: Gordon Hepworth Gallery, Devon
£100-£200



264. Margaret Peach (20th-21st Century) British
A River Landscape
Oil on canvas
Signed and dated '92
20" x 30" (50.8 x 76.2cm)
£150-£250



265. Roy Petley (1950-) British
"Picking Flowers"
Oil on board
Signed and dated 1985, and inscribed on a label verso
17.75" x 23.75" (45.1 x 60.3cm)
Provenance: Century Galleries Limited, Henley-on-Thames
£500-£700



266. Cecil Rochfort D'Oyly-John (1906-1993) British
 "St Paul de Vence, near Nice"
 Oil on canvas
 Signed, and inscribed verso
 16" x 30" (40.6 x 76.2cm)
 £1200-£1800



267. **Michael Debono (1983-) Italian**
 "Halcyon Days"
 Oil on board
 Signed, and inscribed on a label verso
 17" x 13" (43.2 x 33cm)
 Provenance: The Fosse Gallery
 £400-£600



268. **David Heathcote (1931-) British**
 "Waiting"
 Oil on canvas
 Signed and dated 1983, and inscribed verso
 48" x 36" (122 x 91.5cm)
 Provenance: Christie's, 9th April 2019, Lot 122
 £600-£800



269. **Robert Jones (1943-) British**
 "Breezy Day"
 Oil on board
 Signed with initials, and inscribed on a label verso
 13" x 9" (33 x 22.8cm)
 £150-£250



270. Duncan MacGregor (1961-) British
Racing Yacht
Oil on board
With incised signature
48" x 44" (122 x 111.7cm)
Provenance: DeMontfort Fine Art
£2000-£3000

Frames



271. 20th Century English School
A Wooden Frame, rebate 64.5" x 40.75" (163.8 x 103.5cm)
and two other frames, rebate 42.5" x 30" (107.9 x 76.2cm)
and rebate 38.25" x 29.5" (97.2 x 74.9cm) (3)
£40-£60



272. 19th Century English School
A Painted Composition Inner Frame, rebate 60" x 44" (152.4 x 111.7cm)
£40-£60



273. 19th Century English School
A Gilt and Painted Paneled Composition Frame,
rebate 59.75" x 47.75" (151.8 x 121.3cm)
£100-£200



274. 19th Century English School
A Fine Carved Giltwood Frame, with pierced central panels, rebate 56" x 46" (142.2 x 116.8cm)
£600-£800



275. 20th Century English School
A Gilt Composition Frame, rebate 54.25" x 33.75" (137.8 x 85.7cm)
£50-£80



276. 20th Century English School
A Gilt Composition Frame, rebate 51" x 34.5" (129.5 x 87.6cm)
£50-£80



277. 20th Century English School
A Gilt Composition Frame, with swept and pierced centres and corners, rebate 51" x 27.5" (129.5 x 69.8cm)
£80-£120



278. 20th Century English School
A Gilt Composition Frame, rebate 50.5" x 40.25" (128.3 x 102.2cm)
£30-£40

279. 19th Century English School
A Gilt Composition Frame, rebate 50.25" x 30.25"
(127.6 x 76.8cm)
£100-£200



280. 19th Century English School
A Watts Style Gilt Composition Frame, rebate 50" x 40"
(127 x 101.7cm)
£200-£300



281. 20th Century European School

A Gilt Composition Frame, with a white inner edge and black outer edge,
rebate 50" x 40" (127 x 101.6cm)
£50-£80



282. 19th Century English School

A Gilt Composition Carlo Style Frame, rebate 49" x 36.75" (124.4 x 93.3cm)
£60-£80



283. 19th Century English School

A Fine Gilt Composition Frame, rebate 48" x 36" (122 x 91.5cm)
£100-£200



284. 19th Century English School

A Gilt Composition Frame, rebate 46" x 17" (116.8 x 43.2cm)
£40-£60

285. 19th Century English School
A Kent Style Gilt Composition Frame,
rebate 44.25" x 37.25" (112.4 x 94.6cm)
£100-£200



286. 20th Century English School
A Gilt Composition Frame, with swept centres and corners, rebate
42.25" x 28" (107.3 x 71.1cm)
£40-£60



287. 20th Century English School
A Gilt Composition Frame, with a fabric slip, rebate 42" x 27.5"
(106.7 x 69.8cm), without slip, rebate 44" x 30" (111.7 x 76.2cm)
£40-£60



288. 19th Century English School
A Gilt and Painted Composition Watts Style Frame, rebate 41.75" x 27.75"
(106.1 x 70.5cm)
£50-£80



289. 20th Century English School
A Gilt Composition Frame, rebate 41.5" x 31.5" (105.3 x 80cm)
£60-£80



290. 19th Century English School
A Maple Frame, with a gilt slip, and inset glass, rebate 41.5" x 30.5"
(105.4 x 77.4cm)
£60-£80



291. 20th Century English School
A Gilt Composition Frame, with swept centres and corners, rebate 41.25" x 29.25" (104.8 x 74.3cm)
£30-£50



292. Early 20th Century English School
A Painted Composition Frame, with swept centres and corners,
rebate 41" x 33.5" (104.2 x 85.1cm)
£30-£50



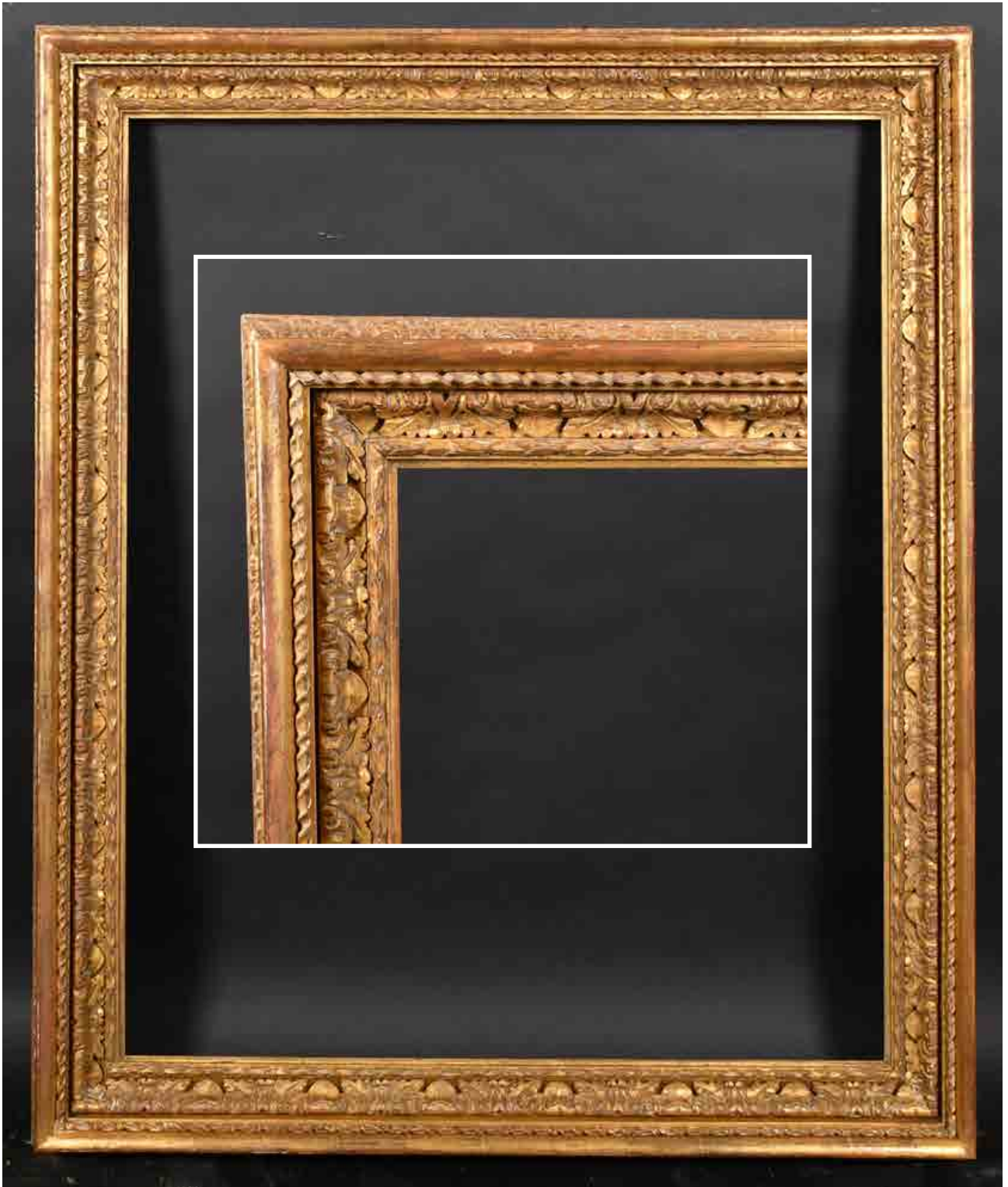
293. 20th Century English School
A Black Painted Frame, with a gilt inner edge, rebate 40" x 28"
(101.6 x 71.1cm)
£60-£80



294. 19th Century English School
A Maple Frame, rebate 40" x 23.5" (101.6 x 59.7cm) and two other maple
frames of different sizes (3)
£50-£80



295. 19th Century English School
A Gilt Composition Watts Style Frame, rebate 40" x 20" (101.6 x 50.8cm)
£80-£120



296. Late 18th Century English School
A Carved Giltwood Carlo Frame, rebate 39.25" x 31.5" (99.7 x 80cm)
£800-£1200



297. 20th Century English School
A Painted Composition Hollow Frame, rebate 39.25" x 27"
(99.7 x 68.6cm)
£50-£80



298. 19th Century English School
A Painted Hollow Frame, rebate 39" x 28.5" (99.1 x 72.4cm)
£50-£80



299. 19th Century English School
A Painted Composition Frame, rebate 39" x 25" (99.1 x 63.5cm)
£40-£60



300. 20th Century English School
A Gilt Composition Frame, rebate 38.75" x 20.75"
(98.4 x 52.7cm)
£80-£120



301. 19th Century English School
A Maple Frame, with a gilt slip, rebate 38" x 27.75"
(96.5 x 70.5cm)
£60-£80



302. Late 18th Century English School
A Stripped Carved Wood Frame, with swept and
pierced centres and corners, rebate 37" x 28"
(94 x 71.1cm)
£300-£400



303. 20th Century European School
A Painted Composition Frame, rebate 36" x 30" (91.5 x 76.2cm)
£60-£80



304. 19th Century English School
A Painted Composition Frame, rebate 36" x 28" (91.5 x 71.1cm)
£40-£60



305. 19th Century English School
A Gilt Composition Frame, with swept centres and corners,
rebate 36" x 28" (91.5 x 71.1cm)
£60-£80



306. 19th Century English School
A Gilt Composition Frame, rebate 36" x 28" (91.5 x 71.1cm)
£80-£120



307. 20th Century English School
A Gilt Composition Frame, rebate 36" x 28"
(91.5 x 71.1cm)
£100-£200



308. 20th Century European School
A Gilt and Painted Composition Frame, rebate 36" x 28"
(91.5 x 71.1cm)
£150-£250



309. 20th Century Italian School
A Black Painted and Gilt Plate Frame,
rebate 36" x 27.75" (91.5 x 70.5cm)
£150-£250



310. 20th Century English School
A Gilt Composition Frame, with swept centres and corners, rebate 36" x 27.5" (91.5 x 69.8cm)
£50-£80



311. 19th Century English School
A Gilt Composition Frame, with swept corners, rebate 36" x 24" (91.5 x 61cm)
£50-£80



312. 19th Century French School
A Gilt and Painted Barbizon Composition Frame, rebate 36" x 24" (91.5 x 61cm)
£80-£120



313. Early 20th Century English School
A Gilt Composition Watts Style Frame, rebate 36" x 24" (91.5 x 61cm)
£80-£120



314. 20th Century English School
A Pair of Gilt Composition Frames, rebate 36" x 24" (91.5 x 61cm) (2)
£80-£120



315. 19th Century French School
A Gilt Composition Frame, rebate 34.5" x 24.75" (87.6 x 62.8cm)
£40-£60



316. 19th Century English School
A Gilt Composition Frame, rebate 32.25" x 18" (81.9 x 45.7cm)
£40-£60



317. 20th Century European School
A Gilt Composition Frame, rebate 32" x 25.5" (81.3 x 64.8cm)
£30-£40



318. 20th Century English School
A Gilt Composition Frame, rebate 32" x 17.25" (81.3 x 43.8cm)
£50-£80



319. 20th Century French School
A Painted Carved Wood Frame, with a painted slip, rebate 31.75" x 15.75" (80.6 x 40cm)
£60-£80



320. 20th Century French School
A Painted Carved Wood Frame, with a painted slip, rebate 31.75" x 15.75" (80.6 x 40cm)
£60-£80



321. 19th Century English School
A Maple Frame, with a gilt slip, rebate 30.75" x 24.5" (78.2 x 62.2cm)
£50-£80



322. 20th Century English School
A Gilt Composition Frame, rebate 30.5" x 25" (77.4 x 63.5cm)
£60-£80



323. Early 19th Century English School
A Painted Carved Wood Carlo Frame, rebate 30.5" x 21" (77.4 x 53.3cm)
£60-£80



324. 19th Century English School
A Maple Frame, with a gilt slip, rebate 30.5" x 17" (77.5 x 43.2cm) and
two other maple frames of different sizes (3)
£50-£80



325. 20th Century European School
A Gilt and Painted Composition Frame, rebate 30.25" x 25.25"
(76.8 x 64.2cm)
£50-£80



326. 18th Century English School
A Painted Carved Wood Frame, rebate 30" x 25"
(76.2 x 63.5cm)
£300-£400



327. 19th Century English School
A Gilt Composition Frame, rebate 30" x 25"
(76.2 x 63.5cm)
£100-£200



328. 19th Century English School
A Painted Composition Frame, with swept corners, rebate 30" x 25"
(76.2 x 63.5cm)
£40-£60



329. 19th Century English School
A Gilt Composition Frame, rebate 30" x 25" (76.2 x 63.5cm)
£60-£80



330. 19th Century English School
A Gilt Composition Hollow Frame,
rebate 30" x 25" (76.2 x 63.5cm)
£100-£200



331. 19th Century English School

A Gilt Composition Frame, with swept centres and corners,
rebate 30" x 25" (76.2 x 63.5cm)

£50-£80



332. Early 20th Century English School

A Painted Composition Frame, with swept centres and corners,
rebate 30" x 25" (76.2 x 63.5cm)

£40-£60



333. 20th Century English School

A Gilt Composition Frame, rebate 30" x 25" (76.2 x 63.5cm)

£80-£120



334. 20th Century English School

A Gilt and Painted Composition Frame, with swept and pierced centres
and corners, rebate 30" x 25" (76.2 x 63.5cm)

£80-£120



336. 19th Century English School
A Gilt Composition Frame, with swept corners, rebate 30" x 20.5"
(76.2 x 52.1cm)
£60-£80



335. 19th Century European School
A Painted Composition Frame, rebate 30" x 22" (76.2 x 55.9cm)
£40-£60



337. 19th Century English School
A Gilt Composition Frame, rebate 30" x 20" (76.2 x 50.8cm)
£30-£40



338. 19th Century English School
A Marquetry Frame, with inset beveled mirror glass,
rebate 29.75" x 21.25" (75.5 x 54cm)
£200-£300



339. 19th Century English School
An Elaborate Gilt and Painted Composition Frame,
with swept and pierced centres and corners,
rebate 29.5" x 24.5" (74.9 x 62.2cm)
£300-£400



340. 20th Century English School
A Gilt Composition Frame, with swept centres and corners,
rebate 29.5" x 24.5" (74.9 x 62.2cm)
£40-£60



341. 20th Century English School
A Painted Composition Frame, with swept centres and corners,
rebate 29.5" x 22.75" (74.9 x 57.8cm)
£40-£60



342. 19th Century English School
A Gilt Composition Frame, rebate 29.5" x 21" (74.9 x 53.3cm)
£50-£80



343. 20th Century English School
A Gilt Composition Frame, rebate 29.25" x 25" (74.3 x 63.5cm)
£30-£40



344. 19th Century English School
A Painted Composition Frame, with swept and pierced centres and corners, rebate 29.25" x 24.25" (74.3 x 61.6cm)
£80-£120



345. 20th Century European School
A Gilt and Painted Carved Wood Frame, with a black fabric slip, rebate 29.25" x 24" (74.3 x 61cm)
£80-£120



346. 19th Century English School
A Painted Composition Frame, rebate 29.25" x 22" (74.3 x 55.8cm)
£40-£60



347. 19th Century English School
A Painted Composition Frame, rebate 29" x 24" (73.7 x 61cm)
£30-£40



348. 17th Century Italian School
A Louis XIV Carved Giltwood Le Brun Frame, rebate 29" x 23.25" (73.7 x 59cm)
£1000-£1500



349. 19th Century English School
A Partially Carved Giltwood Frame,
rebate 29" x 22.5" (73.7 x 57.2cm)
£150-£250



350. 19th Century European School
A Painted Composition Frame, rebate 29" x 20.5" (73.7 x 52.1cm)
£40-£60



351. 18th Century French School
A Gilt Composition Frame, rebate 28.75" x 23.75" (73 x 60.3cm)
£50-£80



352. 20th Century French School
A Painted Carved Wood Frame, with a painted slip, rebate 28.75" x 19.75" (73 x 50.2cm)
£40-£60



353. 19th Century English School
A Maple Frame, with a gilt slip, and inset glass, rebate 28.5" x 22.25"
(72.4 x 56.5cm)
£40-£60



354. 20th Century European School
A Gilt Composition Frame, with swept centres and corners,
rebate 27.5" x 25.5" (69.8 x 64.8cm)
£40-£60



355. 20th Century French School
A Painted Carved Wood Frame, rebate 27" x 22.5" (68.6 x 57.1cm)
£50-£80



356. 20th Century English School
A Silver Composition Frame, rebate 26.75" x 21.75" (68 x 55.3cm)
£40-£60



358. 19th Century English School
A Pair of Gilt Composition Frames, with inset glass, rebate 26.25" x 13.25"
(66.7 x 33.7cm) (2)
£60-£80



357. 20th Century European School
A Gilt Composition Frame, with a wooden outer edge, rebate 26.25" x 20"
(66.7 x 50.8cm)
£30-£40



359. Early 20th Century European School
A Gilt Composition Frame, with swept and pierced
centres and corners, rebate 26" x 21.25" (66.1 x 54cm)
£60-£80



360. 20th-21st Century English School
A Silver Composition Frame, with black outer edge, rebate 25.75" x 21.75" (65.4 x 55.3cm)
£200-£300



361. 20th Century English School
A Gilt Composition Frame, rebate 25.5" x 23.75" (64.8 x 60.4cm)
and another frame, rebate 22.5" x 18.25" (57.2 x 46.3cm) (2)
£50-£80



362. 20th Century French School
A Painted Carved Wood Frame, with a painted slip, rebate 25.5" x 21.25" (64.7 x 54cm)
£60-£80



363. 18th Century French School
A Louis XIV Carved Giltwood
Regence Frame, rebate 25.5" x 20"
(64.7 x 50.8cm)
£200-£300



364. 19th Century French School
A Painted Empire Composition Frame, rebate 25.5" x 19.75"
(64.7 x 50.1cm)
£30-£40



365. 20th Century French School
A Painted Carved Wood Frame, with a painted slip,
rebate 25.5" x 19.75" (64.8 x 50.2cm)
£50-£80



366. 20th Century French School
A Painted Carved Wood Frame, with a painted slip,
rebate 25.5" x 18.25" (64.8 x 46.3cm)
£40-£60



367. 19th Century English School
A Painted Composition Frame, rebate 25" x 20.75" (63.5 x 52.7cm)
and three other frames of various sizes (4)
£30-£40



368. 20th Century English School
A Gilt Composition Frame, with swept centres and corners,
rebate 24.75" x 22" (62.8 x 55.8cm)
£60-£80



369. 20th Century European School
A Gilt Composition Frame, rebate 24.75" x 18.5"
(62.8 x 47cm)
£30-£40



370. 20th Century English School
A Gilt Composition Frame, rebate 24.5" x 19.5" (62.2 x 49.5cm)
£30-£40



371. Early 19th Century English School
A Fine Pair of Carved Giltwood Frames, rebate 24.5" x 19" (62.2 x 48.2cm) (2)
£500-£700



372. 19th Century English School
A Gilt Composition Frame, rebate 24.5" x 14.5" (62.2 x 36.8cm)
£50-£80



373. 19th Century English School
A Maple Frame, with gilt inner and outer edges, rebate 24" x 20.5"
(61 x 52.1cm)
£60-£80



374. 19th Century English School
A Carved Giltwood Frame, rebate 24" x 20" (61 x 50.8cm)
£50-£80



375. 19th Century English School
A Gilt Composition Frame, rebate 24" x 20" (61 x 50.8cm)
£50-£80



376. 20th Century English School
A Painted Composition Frame, with swept centres and corners,
rebate 24" x 20" (61 x 50.8cm)
£30-£40



377. 20th Century English School
A Painted Composition Frame, with swept and pierced centres
and corners, rebate 24" x 20" (61 x 50.8cm)
£30-£40



378. 20th-21st Century European School
A Painted Composition Frame, rebate 24" x 20" (61 x 50.8cm)
£30-£50



379. 20th Century English School
A Gilt Composition Frame, with swept centres and corners, rebate 24" x 19.5" (61 x 49.5cm), and another composition frame, rebate 20" x 16" (50.8 x 40.6cm) (2)
£30-£40



380. 19th Century English School
A Black Painted Frame, with metal start corner decorations, rebate 24" x 19" (61 x 48.2cm)
£50-£80



381. Early 20th Century English School
A Black Painted Frame, rebate 24" x 18" (61 x 45.7cm)
£60-£80



382. 20th Century English School
A Gilt Composition Frame, with swept and pierced centres and corners, rebate 24" x 18" (61 x 45.7cm)
£30-£40



383. 20th Century English School
A Gilt Composition Frame, with swept and pierced centres and corners, rebate 24" x 18" (61 x 45.7cm)
£30-£40



384. 20th Century English School
A White Painted Composition Frame, rebate 24" x 18"
(61 x 45.7cm), and another similar, rebate 24" x 20" (61 x 50.8cm) (2)
£40-£60



385. 20th Century European School
A Gilt Frame, with a velvet plate and slip, rebate 24" x 18"
(61 x 45.7cm)
£30-£40



386. 19th Century English School
A Reverse Darkwood Frame, rebate 24" x 17.75" (61 x 45cm)
£40-£60



387. 20th Century European School
A Painted Wooden Frame, with silver inner and outer edges,
rebate 24" x 17.5" (61 x 44.4cm)
£60-£80



388. 19th Century English School
A Gilt Composition Frame, rebate 24" x 16" (61 x 40.6cm)
£60-£80



389. Early 20th Century English School
A Painted Composition Frame, rebate 24" x 16" (61 x 40.6cm),
together with another frame rebate 25" x 18.25" (63.5 x 46.3cm) (2)
£20-£30



390. 20th Century English School
A Gilt Composition Frame, rebate 24" x 16" (61 x 40.6cm)
£60-£80



391. 20th Century English School
A Pair of Gilt Composition Frames, with swept and pierced centres and corners, rebate 24" x 15.75" (61 x 40cm) (2)
£40-£60



392. 19th Century English School
A Gilt Composition Frame, rebate 24" x 15.5" (61 x 39.4cm)
£40-£60



393. 19th Century English School
A Gilt Composition Frame, rebate 23.5" x 22.25" (59.7 x 56.5cm)
£60-£80



394. 20th Century English School
A Gilt Composition Frame, rebate 23.5" x 20" (59.7 x 50.8cm)
£40-£60



395. 19th Century English School
A Pair of Wooden Frames, with gilt inner edges and metal corner rosettes, rebate 23.5" x 16.5" (59.7 x 41.9cm) (2)
£80-£120



396. 19th Century English School
A Maple Frame, rebate 23.25" x 17" (59 x 43.2cm)
£30-£40



397. 20th Century English School
A Black Painted Frame, with a gilt slip, rebate 23" x 18" (58.4 x 45.7cm)
£50-£80



398. Late 18th Century Spanish School
A Black Painted Frame, with gilt inner and outer edges, rebate 23" x 17.5" (58.4 x 44.4cm)
£200-£300



400. 20th Century European School
A Gilt and Painted Composition Frame, rebate 22.25" x 17" (56.5 x 43.2cm)
£50-£80



399. Early 20th Century English School
A Gold and Green Painted Frame, rebate 22.25" x 18.25" (56.5 x 46.4cm)
£20-£30



401. 20th Century English School
A Gilt Composition Frame, with swept centres
and corners, rebate 22.25" x 14" (56.5 x 35.5cm)
£30-£40



402. 20th Century English School
A Black Frame with Rippling, rebate 22" x 18" (55.8 x 45.7cm)
and two others similar (3)
£250-£350





403. 19th Century English School
A Painted Composition Frame, with swept corners,
rebate 22" x 16" (55.8 x 40.6cm)
£50-£80



404. 19th Century English School
A Maple Frame, with a silver slip, rebate 22" x 16" (55.8 x 40.6cm)
£70-£100



405. Early 19th Century English School
A Pair of Gilt Composition Frames, rebate 22" x 15"
(55.9 x 38.1cm) (2)
£40-£60



406. 20th Century English School
A Painted Composition Frame, rebate 22" x 14" (55.8 x 35.5cm)
£20-£30



407. 20th Century European School
A Wooden Frame, with a gilt slip, rebate 21.75" x 18.25" (55.3 x 46.4cm)
£40-£60



408. 20th Century European School
A Gilt Composition Frame, rebate 21.75" x 18.25" (55.3 x 46.3cm)
£30-£40



409. 20th Century English School
A Gilt Composition Frame, rebate 21.75" x 18" (55.3 x 45.7cm)
£50-£80



410. 19th Century English School
A Pair of Maple Frames, with gilt slips, rebate 21.75" x 15.5"
(55.3 x 39.4cm) (2)
£60-£80



411. 20th Century French School
A Painted Composition Frame, with a white slip, rebate 21.75" x 15"
(55.3 x 38.1cm)
£40-£60



412. 20th Century European School
A Painted Composition Frame, with swept centres and corners, rebate
21.5" x 18" (54.6 x 45.7cm)
£30-£40

413. 20th Century English School
 A Pre Raphaelite Composition Frame, rebate 21.5" x 17"
 (54.6 x 43.2cm)
 £150-£250



414. Early 19th Century English School
 A Hollow Gilt Composition Frame, rebate 21.25" x 18"
 (54 x 45.7cm)
 £100-£150



415. 19th Century English School
A Gilt Composition Frame, with swept corners, rebate 21.25" x 17.25"
(54 x 43.8cm)
£30-£40



416. 20th Century English School
A Gilt Composition Frame, with swept corners, rebate 21.25" x 17.25"
(53.9 x 43.8cm)
£50-£80



417. 19th Century English School
A Gilt Composition Frame, rebate 21.25" x 17" (54 x 43.2cm)
£30-£40



418. Early 20th Century English School
A Painted Mirror Frame, with inset glass, rebate 21.25" x 15.75" (54 x 40cm)
£20-£30

419. Early 19th Century English School
A Gilt Composition Hollow Frame,
rebate 21" x 17.75" (53.3 x 45.1cm)
£200-£300



420. Late 18th Century English School
A Gilt Composition Frame, rebate 21" x 17" (53.3 x 43.2cm)
£80-£120



421. 20th Century English School
A Pair of White Painted Composition Frames, rebate 21" x 17"
(53.3 x 43.2cm) (2)
£40-£60



422. 20th Century English School
A Gilt Composition Frame, rebate 21" x 14" (53.3 x 35.5cm)
£50-£80



423. 19th Century English School
A Reverse Maple Frame, rebate 20.75" x 15.25" (52.7 x 38.7cm)
£20-£30



424. Early 19th Century English School
A Gilt Composition Frame, rebate 20.5" x 16.75" (52.1 x 42.5cm)
£80-£120



425. 20th Century English School
A Gilt Composition Frame, with swept centres and corners,
rebate 20.25" x 16.25" (51.4 x 41.3cm)
£30-£40



426. 20th Century English School
A White Painted Composition Frame, rebate 20.25" x 16.25"
(51.4 x 41.3cm) and another similar, rebate 20" x 15.75" (50.8 x 40cm) (2)
£30-£40



427. 19th Century English School
A Pair of Maple Frames, with gilt slips, rebate 20" x 16.5"
(50.8 x 41.9cm) (2)
£80-£120



429. 20th Century English School
A Simulated Tortoiseshell Medici Frame, rebate 20" x 16" (50.8 x 40.6cm)
£30-£40



428. Early 20th Century English School
A Gilt Composition Kent Style Frame, rebate 20" x 16.25" (50.8 x 41.3cm)
£60-£80



430. 20th Century English School
A Painted Composition Frame, with swept centres and corners and a fabric slip, rebate 20" x 16" (50.8 x 40.6cm)
£30-£40



431. 19th Century English School
A Gilt Composition Frame, rebate 20" x 15.75" (50.8 x 40cm)
£50-£80



432. 19th Century English School
A Painted Composition Frame, with swept corners, rebate 20" x 15.75"
(50.8 x 40cm)
£30-£40



433. 20th Century English School
A Hollow Gilt Composition Frame, with inset glass, rebate 19.75" x 14.75"
(50.2 x 37.4cm)
£30-£40



434. 20th Century English School
A Black Painted Frame, with a gilt outer edge, rebate 19.5" x 15.75"
(49.5 x 40cm)
£80-£120



435. 20th-21st Century English School
A White Painted Frame, with silver edges, rebate 19.5" x 15.5"
(49.5 x 39.4cm)
£50-£80



436. 20th Century English School
A Gilt Composition Frame, with swept and pierced centres and corners,
rebate 19.5" x 13.25" (49.5 x 33.7cm)
£30-£40



437. 20th Century English School
A Painted Composition Frame, rebate 19.25" x 14.25" (48.8 x 36.2cm)
£20-£30



438. 19th Century English School
A Painted Composition Frame, rebate 19" x 14.5" (48.2 x 36.8cm)
£30-£40



439. 19th Century English School
A Gilt Composition Frame, rebate 19" x 13" (48.2 x 33cm)
£80-£120



440. 19th Century English School
A Painted Composition Frame, rebate 18.75" x 12.75" (47.6 x 32.4cm)
£30-£40



441. Late 17th Century French School

A Louis XIV Carved Giltwood Frame, with swept centres and corners, rebate 18.5" x 15.25" (47 x 38.7cm)

£1000-£1500



442. Early 19th Century English School
A Black Painted Frame, with a gilt slip and inset glass,
rebate 18.5" x 15.25" (47 x 38.7cm)
£50-£80



443. 19th Century English School
An Ornate Gilt Composition Frame, rebate 18.5" x 9.5" (47 x 24.2cm),
together with a wooden frame with a gilt slip, rebate 19.75" x 10.25"
(50.2 x 26cm) (2)
£30-£40



444. 20th Century English School
A Gilt Composition Frame, rebate 18.25" x 14.25" (46.3 x 36.2cm)
£40-£60



445. 20th Century English School
A Gilt Composition Frame, with swept centres and corners,
rebate 18.25" x 14" (46.3 x 35.5cm)
£30-£40



447. 19th Century English School
A Painted Composition Frame, rebate 18.25" x 10" (46.4 x 25.4cm)
£30-£40



446. 20th Century Italian School
A Black Painted and Gilt Plate Frame, rebate 18.25" x 13.25" (46.4 x 33.7cm)
£100-£150



448. 20th Century English School
A Black Rippled Frame, rebate 18" x 16" (45.7 x 40.6cm)
£300-£400



449. Early 19th Century English School
A Gilt Composition Frame, rebate 18" x 15" (45.7 x 38.1cm)
£40-£60



450. 20th Century English School
A Gilt Composition Frame, with swept centres and corners and a white inner edge, rebate 18" x 15" (45.7 x 38.1cm)
£30-£40



451. 20th Century French School
A Painted Carved Wood Frame, with swept centres and corners, rebate 18" x 15" (45.7 x 38.1cm)
£40-£60



452. 20th Century French School
A Painted Carved Wood Frame, with a painted slip, rebate 18" x 15" (45.7 x 38.1cm)
£50-£80



454. 19th Century English School
A Gilt Composition Watts Frame, rebate 18" x 14" (45.7 x 35,5cm)
£100-£150



453. 20th Century French School
A Painted Carved Wood Frame, rebate 18" x 15" (45.7 x 38.1cm)
£60-£80



455. 19th Century English School
A Gilt Composition Frame, with swept centres and corners,
rebate 18" x 13.25" (45.7 x 33.7cm)
£30-£40



456. 19th Century English School
A Black Painted Frame, with a gilt slip, rebate 18" x 12" (45.7 x 30.5cm)
£50-£80



457. 20th Century European School
A Gilt Composition Frame, with swept and pierced centres and corners, rebate 18" x 12" (45.7 x 30.5cm)
£30-£40



458. 20th Century English School
A Gilt Composition Frame, with swept centres and corners and a fabric slip, rebate 17" x 15" (43.2 x 38.1cm)
£30-£40



459. 19th Century English School
A Maple Frame, with a gilt slip, rebate 16.75" x 14" (42.5 x 35.5cm)
£40-£60



460. Early 20th Century English School
A Pair of Darkwood Frames, with silver slips, rebate 16.5" x 13.5" (41.8 x 34.3cm) (2)
£50-£80



461. 19th Century English School
A Darkwood Frame, rebate 16.5" x 13.25" (41.8 x 33.7cm)
£40-£60



462. 19th Century English School

A Near Pair of Gilt Composition Inner Frames, rebate 16.5" x 12.75"
(41.9 x 32.3cm) and the another, rebate 15" x 12.5" (38.1 x 31.7cm) (2)
£40-£60



463. 20th Century English School

A Gilt Composition Frame, with a white slip, rebate 16" x 14.5"
(40.6 x 36.8cm)
£30-£40



464. 19th Century English School

A Gilt Composition Frame, with swept corners, rebate 16" x 13"
(40.6 x 33cm)
£50-£80



465. 20th Century French School

A Painted Composition Frame, with swept and pierced centres and corners, rebate 16" x 13" (40.6 x 33cm)
£50-£80



466. 20th Century English School
A Gilt and Painted Composition Frame, rebate 16" x 12.25" (40.6 x 31.1cm)
£30-£40



467. 19th Century English School
A Maple Frame, with a gilt slip, and inset glass, rebate 15.25" x 12" (38.7 x 30.5cm), and three others similar (of various sizes) (4)
£100-£150



468. 20th Century English School
A Gilt Composition Frame, with inset glass, rebate 15.25" x 11.25" (38.7 x 28.6cm), together with two other composition frames of various sizes (3)
£30-£40

469. 20th Century English School
A Near Set of Six Gold Leaf Composition
Frames, rebate 15.25" x 11.25"
(38.7 x 28.6cm) (6)
£250-£350



470. 20th-21st Century English School
A Silver Composition Frame, rebate 15" x 12" (38.1 x 30.5cm)
£80-£120



471. 19th Century English School
A Maple Frame, with a gilt slip and inset tapestry and glass,
rebate 14.5" x 13.5" (36.8 x 34.3cm)
£30-£40



472. 20th Century English School

A Gilt Composition Frame, with swept and pierced centres and corners, rebate 14.5" x 12.75" (36.8 x 32.4cm) and another similar, rebate 19.75" x 15.75" (50.2 x 40cm) (2)

£30-£40



473. 20th Century English School

A Set of Four Maple Frames, with gilt slips, rebate 14.5" x 11.25" (36.8 x 28.6cm) (4)

£150-£200



474. 20th Century English School

A Painted Composition Frame, with swept centres and corners, and a white slip, rebate 14" x 12" (35.5 x 30.5cm)

£30-£40



475. Early 20th Century English School
A Painted Composition Frame, rebate 14" x 11" (35.5 x 27.9cm)
£30-£40



476. 20th Century English School
A Painted Composition Frame, with swept corners, rebate 14" x 10" (35.5 x 25.4cm)
£40-£60



477. Early 20th Century European School
A Black Frame, with a gilt slip, rebate 13.5" x 11.5" (34.3 x 29.2cm)
£20-£30



478. 19th Century English School
A Maple Frame, with a silver slip, rebate 13.25" x 9.5" (33.6 x 24.1cm)
£40-£60



479. 19th Century English School
A Gilt Composition Frame, with an Oval inset, rebate 12.75" x 10.75" (32.4 x 27.3cm), and two other composition frames of various sizes (3)
£30-£40



480. 20th Century Italian School
A Carved Giltwood Frame, with swept corners, rebate 11.75" x 9.25" (29.8 x 23.5cm)
£40-£60



481. 19th Century English School
A Gilt Composition Frame, rebate 11.25" x 7.75" (28.5 x 19.7cm)
£30-£40



482. 19th Century English School
A Gilt Composition Frame, rebate 10.75" x 8.5" (27.3 x 21.6cm)
£30-£40



483. Early 19th Century English School
A Darkwood Frame, with a painted carved wood slip, rebate 10.25" x 8.25"
(26 x 21cm)
£60-£80



484. 20th Century English School
A Painted Frame, with gilt edging, rebate 10" x 8" (25.4 x 20.3cm)
£50-£80



485. Late 18th Century English School
A Black Painted Frame, with gilt inner and outer edges, rebate 10" x 7.25" (25.4 x 18.4cm) and another similar, rebate 7.5" x 6.5" (19 x 16.5cm) (2)
£60-£80



486. 18th Century Italian School

A Gilt and Black Painted Carved Wood Frame, with gilt decoration, rebate 9.5" x 7.5" (24.1 x 19cm)

£500-£700



487. 20th Century English School

A Near Pair of Gilt Composition Frames, with swept and pierced centres and corners, rebate 8.75" x 6.25" (22.2 x 15.8cm) and the other, rebate 7.25" x 5.5" (18.4 x 14cm) (2)
£60-£80



488. Late 18th Century English School

A Carved Giltwood Frame, with swept and pierced corners, rebate 8.5" x 7.25" (21.5 x 18.4cm)
£200-£300



489. 20th-21st Century English School

A Near Pair of Silver Composition Frames, rebate 8.25" x 6.25" (20.9 x 15.8cm) and the other, rebate 7.25" x 5.5" (18.4 x 14cm) (2)
£150-£200

490. 20th Century Greek School
A Pair of Carved Giltwood Altar Frames,
rebate 7.75" x 5" (19.7 x 12.7cm) (2)
£150-£250



491. 20th Century Italian School
A Set of Three Carved Giltwood Frames,
rebate 7.25" x 6" (18.4 x 15.2cm) (3)
£100-£200



492. Early 19th Century English School
A Carved Giltwood Frame, with inset print on glass, rebate 7" x 5.5"
(17.7 x 14cm)
£50-£80



493. 18th Century French School
A Fine Gilt Composition Frame, rebate 6" x 6" (15.2 x 15.2cm)
£80-£120



494. Late 18th Century English School
A Pearwood Frame, with a gilded slip and inset print on glass,
rebate 5.25" x 4.25" (13.3 x 10.7cm)
£50-£80



495. 19th Century English School
A Gilt Composition Frame, rebate 4.5" x 4.25" (11.4 x 10.8cm)
£40-£60



496. 17th Century French School
A Louis XIII Carved Giltwood Frame, rebate 4.5" x 3.5"
(11.4 x 8.9cm)
£80-£120



497. 19th-20th Century English School
A collection of twenty seven carved wood frame moulds (27)
£600-£800



498. 19th-20th Century English School
A collection of twenty two carved wood frame moulds (22)
£500-£700

(Each lot is subject to Buyer's Premium of 25% plus VAT)



499. 19th-20th Century English School
A collection of twenty two carved wood frame
moulds (22)
£500-£700



500. 19th-20th Century English School
A collection of twenty carved wood frame
moulds (20)
£500-£700



501. 19th-20th Century English School
A collection of nineteen carved wood frame moulds (19)
£500-£700



502. 19th-20th Century English School
A collection of sixteen carved wood frame moulds (16)
£400-£600



503. 19th-20th Century English School
A collection of ten carved wood frame moulds (10)
£300-£400

PARKER

FINE ART AUCTIONS

Hawthorn House | East Street | Farnham | Surrey | GU9 7SX

Forthcoming Fine Paintings & Jewellery Sale

9th October 2025



Consign to our sales: No commission or illustration charges
Just £15 (+VAT) per lot and 1.5% (+VAT) loss and damage waiver

Explanation of Catalogue Terms

The forename(s) (or asterisks where not known) and surname of the artist indicates, in our opinion, an original work by the artist named. The initials of the forename(s) and the surname of the artist indicates in our opinion a work of the period of the artist which may be wholly or in part his/her work.

'Attributed to...'	In our opinion probably a work by the artist, but with less certainty as to authorship in whole or part.
'Studio of ...'	In our opinion a work by an unknown artist in the studio of the artist, possibly under the artist's direction.
'Circle of ...'	In our opinion a work of the period, by an unknown artist with the artist's influence.
'Style of ...'	In our opinion a work at a later date, by an unknown artist following the artist's style.
'Follower of ...'	In our opinion a work at a much later date, by an unknown artist following the artist's style.
'Manner of ...'	In our opinion a work at an unknown date, by an unknown artist following the artist's style.
'After ...'	In our opinion a work at a later date, by an unknown artist copying a work of the artist.
'Signed, Dated & Inscribed'	In our opinion the signature, date and inscription are from the hand of the artist.
'Highlighted Signature'	In our opinion the signature is/are from the hand of the artist, in whole or part, that may have been restored.
'Bears a Signature'	In our opinion the signature is not by the artist and has been added by another hand/hands at a later date.
'Oil Painting'	In our opinion is painted in oils or acrylic.
'Mixed Media'	In our opinion a mixture or combination of part, some or all of the following - Oil, Watercolour, Gouache, Pencil, Ink or Print.

Consign to our 2025 sales

**No commission or illustration charges
Just £15 (+VAT) per lot and 1.5% (+VAT)
loss and damage waiver**

AUCTION INFORMATION

BUYER'S FEES - All purchases are subject to a buyer's premium, which is charged per lot at 25% of the hammer price plus VAT at the current rate of 20% will be added to the buyer's premium of all lots.

CONDITION REPORTS - Condition reports can be requested by contacting us at info@parkerfineartauctions.com or calling us on 01252 20 30 20. Bidders must satisfy themselves as to the condition of each lot. A Condition Report is an honest expression of our opinion and not a statement of fact and is provided as a service to the Seller. Requests for condition reports must be submitted 24 hours before the start of the sale. The absence of a condition report in this catalogue does not imply there are no imperfections in the works.

REQUEST FOR IMAGES - More images can be found in the online catalogue. Requests for additional images of items in the sale can be made up to 24 hours before the start of the sale.

Please note the colours portrayed in the catalogue, and in additional images, are the best attempt at a likeness but cannot be confirmed as identical to the true colours.

Please note that, owing to the recent introduction of money laundering regulations clients wishing to bid in this auction will be asked to provide two forms of identification. This applies to new and existing clients.

ATTENDING THE AUCTION - If intending to buy you are required to register your name and details at our reception desk on the day of the auction. You will then be allocated a bidding number, which you use when bidding for an item.

ABSENTEE BIDS - You can place an absentee bid, and the auctioneer will bid on your behalf to obtain the lot as cheaply as possible as allowed by other bids and reserves. To make an absentee bid you can complete a bidding form at reception, telephone us, or send us your bid by email. You should give us the maximum hammer price you are prepared to pay, remembering to take into account the buyer's premium and any taxes and charges payable on top of the hammer price.

Absentee bids must be submitted by close of business on the day before the sale. If identical bids are submitted, the person who bid first will take precedence.

TELEPHONE BIDDING - You can take part in the sale by bidding over the telephone. Telephone lines must be booked by close of business on the day before the sale and are allocated on a first-come-first-served basis.

ONLINE BIDDING - Bidding can be done through EasyLive Auctions or the-saleroom.com. Bidding on these sites is directly through the relevant platforms and will incur extra commission charges. Please refer to the individual bidding websites for their individual terms and conditions.

PAYMENT - Payment will be accepted, if you are a successful bidder, by bank transfer direct into our bank account, by debit card issued in the name of the Buyer by a UK bank and registered to a UK billing address, by all major UK issued credit cards issued in the name of the Buyer and registered to a UK billing address (up to £1000), or in cash up to £8,000 (subject to relevant money laundering regulations). The name of the bank account holder should match the name of the buyer. Payment may also be made by sterling personal cheques drawn on a UK bank account and made payable to 'Parker Fine Art Auctions Ltd', however Lots paid for by this method cannot be collected until your cheque has cleared. Payment can be made and purchases collected during the auction. All accounts must be settled within 14 days of the sale. Accounts not paid within 14 days will automatically be subject to an interest charge (not exceeding 1.5% per month on the total amount due). Monies from wire transfers and cheques must be cleared into our account for 24 hours before items may be collected.

If the buyer has failed to collect within a period of two months (from sale date), Parker Fine Art Auctions reserve the right to re-enter the uncollected items through auction, to recover the cost of storage and associated costs. At this time the buyer relinquishes all claims to ownership and any right to financial compensation.

COLLECTION - Before being able to collect your purchases you are required to pay the hammer price, plus the applicable charges, and obtain a receipt acknowledging payment.

Once payment for lots has been received collection or transportation of purchased lots must be made within 14 days of the sale to avoid storage charges.

We are open for collections Monday – Friday between 9am and 5pm, or by arrangement.

STORAGE - Storage charges will be levied on all lots not collected within 14 days of the sale of £5 plus VAT per lot per day.

DELIVERY - If you are arranging your own professional collection and delivery, please ensure the lot has been paid for and the transport company has full details of the items to be collected, and we have received an authorisation note.

In some circumstances some very small items may be posted for a fee, but this will be at the Auctioneer's discretion and will be subject to your own Insurance and Liability. Please contact us if you would like details of local shipping companies.

For Full terms and conditions please go to our website
www.parkerfineartauctions.com

Conditions of Sale for Public Auctions

Parker Fine Art Auctions Ltd carries out business with Bidders, Buyers and Sellers on the following conditions and on such terms, conditions and notices as may be referred to herein. All Bidders, Buyers and others participating in a public auction accept that these terms apply to the exclusion of any terms and conditions contained in any of those person's own documents even if the same purport to provide that they or some other terms prevail. Any particular public auction and/or any particular lot in an auction may be subject to different or additional terms which will be published in our auction catalogue online.

The Buyer's attention is particularly drawn to clause 24 (consumers) and clause 23 (non-consumers), which set out the extent of the Auctioneer's and the Seller's liability to the Buyer.

Please read these Conditions together with our "Information for Buyers" document, which provides additional information and terms applicable to our auctions.

1. DEFINITIONS

In these Conditions:

- (a) "Auction Terms and Conditions" means these Conditions, the Terms of Consignment and any other terms applicable to auctions conducted by the Auctioneer and notified to Buyers, Bidders and/or Sellers (as applicable);
- (b) "Auctioneer", "we", "us" or "our" etc. means the firm of Parker Fine Art Auctions Ltd or its authorised auctioneer, as appropriate;
- (c) "Conditions" means these Conditions of Sale for Public Auctions (which include the terms set out in "Information for Buyers");
- (d) "deliberate forgery" means an imitation made with the intention of deceiving as to authorship, origin, date, age, period, culture or source but which is unequivocally described in the catalogue as being the work of a particular creator and which at the date of the sale had a value materially less than it would have had if it had been in accordance with the description;
- (e) "hammer price" means the level of bidding reached (at or above any reserve) when the auctioneer brings down the hammer;
- (f) "Information for Buyers" means the document named Information for Buyers at Public Auction containing additional terms and information for Buyers available on our website at www.parkerfineartauctions.com;
- (g) "Lots" any items or group of items offered for sale by us as agents for the Seller;
- (h) "Seller" means any person that appoints us as their agent to sell Lots on their behalf;
- (i) "Terms of Consignment" means the stipulated terms and rates of commission on which we accept instructions from Sellers or their agents including those terms set out in the document named "Terms of Consignment for Public Auctions" which can be found on our website or are available upon request;
- (j) "Total Amount Due" means the hammer price in respect of the Lot sold together with any premium, Value Added Tax chargeable and any additional charges payable by a defaulting buyer under these Conditions;
- (k) "Sale Proceeds" means the net amount due to the Seller, being the hammer price of the lot sold less commission at the stated rate, Value Added Tax chargeable and any other amounts due to us by the seller in whatever capacity and however arising; "you", "your", etc. refer to the buyer as identified in Clause 3.4;
- (l) The singular includes the plural and vice versa as appropriate; and
- (m) A person includes a natural person, corporate or unincorporated body (whether or not having separate legal personality).

2. FORMATION OF CONTRACT

A contract for the sale and purchase of a Lot shall come into existence between the Seller and the Buyer on these Conditions upon acceptance by the Auctioneer of a bid by the Buyer.

3. BIDDING PROCEDURES AND THE BUYER

- 3.1 Bidders are required to register their particulars before bidding by completing a sale registration form and to satisfy any security arrangements before entering the auction room to view or bid.
- 3.2 Under the money laundering regulations in force we are required to verify the identity of all customers we transact with as well as any beneficiaries on behalf of whom they may transact. Customers who are unable to or refuse to supply required identification documents and proof of address may not be able to bid at our auctions. Copies of

customer due diligence checks will be stored for as long as it is necessary to satisfy legal requirements in an appropriate storage facility which for the avoidance of doubt may include storage solely in electronic form.

- 3.3 The maker of the highest bid accepted by the auctioneer conducting the sale shall be the buyer at the hammer price and any dispute about a bid shall be settled at the Auctioneer's absolute discretion by reoffering the Lot during the course of the auction or otherwise. The auctioneer shall act reasonably in exercising this discretion. The Auctioneer shall rule the bidding and no bid may be retracted.

- 3.4 The Buyer is the person who is successful in purchasing a Lot or Lots in accordance with these Conditions. Purchases made on behalf of a third party are the responsibility of the Buyer in the room. The Auctioneer reserves the right to bid on behalf of the Seller for any Lot and to withdraw, consolidate or divide any Lot or Lots.

- 3.5 Bidders shall be deemed to act as principals (i.e. not on behalf of or as the agent of any other person).

- 3.6 Our right to bid on behalf of the Seller is expressly reserved up to the amount of any reserve below the bottom estimate and the right to refuse any bid is also reserved.

4. INCREMENTS

Bidding increments shall be at the Auctioneer's sole discretion.

5. THE PURCHASE PRICE

The purchase price payable for a Lot is the hammer price plus a buyer's premium thereon of 25% plus VAT on the premium at the rate imposed by law and is payable in accordance with clause 7.

6. VALUE ADDED TAX.

Value Added Tax on the hammer price is imposed by law on all items affixed with a dagger or double dagger symbol. Value Added Tax is charged at the appropriate rate prevailing by law at the date of sale and is payable by buyers of relevant Lots. (Please refer to "Information for Buyers" for a brief explanation of the VAT position).7.

PAYMENT

- 7.1 Immediately a Lot is sold you will:

- (a) give to us, if requested, proof of identity, and
- (b) pay to us the total amount due in pounds sterling.

- 7.2 Any payments by you to us may be applied by us towards any sums owing from you to us on any account whatever without regard to any directions of you or your agent, whether expressed or implied.

- 7.3 In order to comply with money laundering regulations we reserve the right to require proof of source of funds and/or confirmation of the nature and source of wealth for all receipts of monies from clients directly or from third parties for payments on behalf of clients. The completion of the sale of a Lot will be postponed or cancelled at our discretion if further time is needed for investigation, or if you are in breach of your warranties as a buyer, or if we consider the sale to be unlawful or in any way cause liabilities or be detrimental to either us or the Seller.

8. TITLE AND COLLECTION OF PURCHASES

- 8.1 The ownership of any Lots purchased shall not pass to you until you have made payment in full in cleared funds to us of the total amount due.

- 8.2 You shall at your own risk and expense take away any lots that you have purchased and paid for no later than 14 working days following the day of the auction or upon the clearance of any cheque used for payment after which you shall be responsible for any removal, storage and insurance charges.

- 8.3 No purchase can be claimed or removed until it has been paid for.

9. REMEDIES FOR NON-PAYMENT OR FAILURE TO COLLECT PURCHASES

- 9.1 If any Lot is not paid for in full and taken away in accordance with these Conditions, or if there is any other breach of these Conditions, we, as agent for the Seller and on our own behalf, shall at our absolute discretion and without prejudice to any other rights we may have, be entitled to exercise one or more of the following rights and remedies:

- (a) to proceed against you for damages for breach of contract;
- (b) to rescind the sale of that Lot and/or any other Lots sold by us to you;
- (c) to resell the Lot (by auction or private treaty) in which case you shall be responsible for any resulting deficiency in the total amount due (after

- crediting any part payment and adding any resale costs). Any surplus so arising shall belong to the Seller;
- (d) to remove, store and insure the Lot at your expense and, in the case of storage, either at our premises or elsewhere;
 - (e) to charge interest at a rate not exceeding 1.5% per month on the total amount due to the extent it remains unpaid for more than fourteen working days after the sale;
 - (f) to retain that or any other Lot sold to you until you pay the total amount due;
 - (g) to reject or ignore bids from you or your agent at future auctions or to impose conditions before any such bids shall be accepted; or
 - (h) to apply any proceeds of sale of other Lots due or in future becoming due to you towards the settlement of the total amount due and to exercise a lien (that is a right to retain possession of) over any of your property in our possession for any purpose until the debt due is satisfied.
- 9.2 We shall, as agent for the Seller and on our own behalf pursue these rights and remedies only so far as is reasonable to make appropriate recovery in respect of breach of these Conditions
- 10. THIRD PARTY LIABILITY**
- 10.1 All bidders, buyers and other members of the public on our premises are there at their own risk and must note the lay-out of the accommodation and security arrangements. Accordingly neither the auctioneer nor our employees or agents shall incur liability for death or personal injury or for the safety of the property of persons visiting prior to or at a sale (except in each case as may be required by law by reason of our negligence)
- 11. COMMISSION BIDS**
- 11.1 Whilst prospective buyers are strongly advised to attend the auction and are always responsible for any decision to bid for a particular Lot and shall be assumed to have carefully inspected and satisfied themselves as to its condition and authenticity, we will if so instructed clearly and in writing execute bids on their behalf. Neither the auctioneer nor our employees or agents shall be responsible for any failure to do so.
- 11.2 Where two or more commission bids at the same level are recorded we reserve the right in our absolute discretion to prefer the first bid so made.
- 12. WARRANTY OF TITLE AND AVAILABILITY**
- 12.1 The Seller warrants to the auctioneer and you that the Seller is the true owner of the property consigned or is properly authorised by the true owner to consign for sale and is able to transfer good and marketable title to the property free from any third party claims.
- 12.2 We are acting as the agent of the Seller only and give no warranty as to the Seller's title to the Lot.
- 12.3 Save as expressly set out above, all other warranties, conditions or other terms which might have effect between the Seller and you, or us and you, or be implied or incorporated by statute, common law or otherwise are excluded to the fullest extent permitted by law.
- 13. TERMS OF SALE**
- The Seller and the Buyer acknowledge that Lots are sold subject to the stipulations of these Conditions (including the Information For Buyers) in their entirety and on the Terms of Consignment as notified to the Seller at the time of the entry of the Lot.
- 14. DESCRIPTIONS AND CONDITION**
- 14.1 Whilst we seek to describe Lots accurately, it may be impractical for us to carry out exhaustive due diligence on each Lot. Bidders are given ample opportunities to view and inspect before any sale and they (and any independent experts on their behalf) must satisfy themselves as to the accuracy of any description applied to a Lot. Bidders also bid on the understanding that, inevitably, representations or statements by us as to authorship, genuineness, origin, date, age, provenance, condition or estimated selling price involve matters of opinion. We undertake that any such opinion shall be honestly and reasonably held and accept liability for opinions given negligently or fraudulently.
- 14.2 Subject to the foregoing neither we the auctioneer nor our employees or agents nor the Seller accept liability for the correctness of such opinions and all conditions, attributions and warranties, whether relating to description, condition or quality of lots, express, implied or statutory, are hereby excluded.
- 14.3 We are not liable for damage to gilded picture frames, plaster picture frames or picture frame glass. If the Lot is, or becomes dangerous, we may dispose of it without notice to you in advance in any manner we see fit and will be under no liability for doing so. We shall not be liable for any damage to any Lot arising during the viewing, during the sale, or after the sale.
- 14.4 We act as agents only. Each Prospective Buyer by making a bid for a Lot acknowledges that they have satisfied themselves fully as to the attribution and condition of the Lot. Pictures have not been removed from their frames unless specifically mentioned in the Condition Report (as in the event the item is unsold it must be returned to the Seller in the condition it was received by us). This Condition is subject to deliberate forgeries (clause 17).
- 14.5 Private treaty sales made under these Conditions are deemed to be sales by auction for purposes of consumer legislation.
- 15. TRANSFER OF RISK.**
- 15.1 The risk in the Lot shall pass to the Buyer upon completion of the Sale by the Auctioneer.
- 15.2 We are not responsible for the correct description, genuineness or authenticity of any Lot as per these Conditions. The Buyer is deemed to have inspected each Lot and satisfied himself/herself to the condition.
- 16. OWNERSHIP OF THE LOT**
- Title to the Lot purchased will not pass to the Buyer until the Buyer has paid us in full and cleared funds the total amount due pursuant to these Conditions and we have applied such payment to the Lot.
- 17. FORGERIES**
- 17.1 Notwithstanding the preceding Condition, any Lot which proves to be a deliberate forgery (as defined) may be returned to us by you within 21 days of the auction provided it is in the same condition as when bought, and is accompanied by particulars identifying it from the relevant catalogue description and a written statement of defects. If we are satisfied from the evidence presented that the Lot is a deliberate forgery we shall refund the money paid by you for the Lot including any buyer's premium unless:
- (a) the catalogue description reflected the accepted view of scholars and experts as at the date of sale; or
 - (b) you personally are not able to transfer a good and marketable title to us,
- and in the event of clause 17.1 (a) or 17.1 (b) applying you shall have no rights under this condition.
- 17.2 The right of return provided by this clause 17 is additional to any right or remedy provided by law or by these Conditions.
- 18. PRIVACY NOTICE.**
- We will hold and process any personal data in relation to you in accordance with our current privacy policy, a copy of which is available on our website parkerfineartauctions.com
- 19. GENERAL**
- 19.1 We shall have the right, at our discretion, to refuse admission to our premises or attendance at our auctions by any person.
- 19.2 Any right to compensation for losses liabilities and expenses incurred in respect of and as a result of any breach of these Conditions and any exclusions provided by them shall be available to the Seller and/or the Auctioneer as appropriate.
- 19.3 Such rights and exclusions shall extend to and be deemed to be for the benefit of employees and agents of the Seller and/or the auctioneer who may themselves enforce them.
- 19.4 Special terms may be used in catalogue descriptions of particular classes of items in which case the descriptions must be interpreted in accordance with any glossary appearing in the catalogue.
- 20. NOTICES**
- Any notice to any buyer, seller, bidder or viewer may be given by first class mail or email in which case it shall be deemed to have been received by the addressee 48 hours after posting or in the event of email upon actual receipt of such email.

21. **NO WAIVER**
Any indulgence extended to bidders, buyers or sellers by us notwithstanding the strict terms of these Conditions or of the Terms of Consignment shall affect the position at the relevant time only and in respect of that particular concession only; in all other respects these Conditions shall be construed as having full force and effect.
22. **LIABILITY**
Nothing in these Conditions shall limit any liability which cannot legally be limited, including liability for:
(a) death or personal injury caused by negligence;
(b) fraud or fraudulent misrepresentation;
(c) breach of the terms implied by section 12 of the Supply of Goods Act 1979 (title and quiet possession) however attention is drawn to clause 12.2.
23. **LIMITATION OF LIABILITY TO NON-CONSUMERS**
(This clause 23 applies only to non-Consumers)
- 23.1 Subject to clause 22, and unless you are an individual purchasing or selling the Lot for purposes which are wholly or mainly outside your trade, business, craft or profession (**Consumer**), our total liability to either the Buyer of the Seller (as appropriate) shall not exceed the value of the Lot sold by the Seller to the Buyer. The following types of loss are wholly excluded by us:
(a) loss of profits;
(b) loss of sales or business;
(c) loss of agreements or contracts;
(d) loss of anticipated savings;
(e) loss of or damage to goodwill, and
(f) indirect or consequential loss.
- 23.2 Subject to clause 22, all conditions, warranties and other terms which might otherwise be implied by statute, common law or the law of equity, including without limitation the terms implied by sections 13 to 15 of the Sale of Goods Act 1979, are, to the fullest extent permitted by law, expressly excluded.
- 24.1 **LIMITATION OF LIABILITY TO CONSUMERS**
(This clause 24 applies only to Consumers)
- 24.1 Consumers are reminded that we act only as an agent of the Seller and are not the supplier of the Lots.
- 24.2 If the Auctioneer or the Seller fails to comply with these Conditions, it or they shall be responsible for loss or damage you suffer that is a foreseeable result of its or their breach of these Conditions or its or their negligence, but neither the Auctioneer nor the Seller shall be responsible for any loss or damage that is not foreseeable. Loss or damage is foreseeable if they were an obvious consequence of the breach or if they were contemplated by the Agent and/or the Seller and the Buyer at the time this contract was entered into.
25. **RIGHT TO CANCEL**
- 25.1 If you purchase a Lot at a virtual auction (an auction which is held online only so that there is no possibility for you to attend the auction in person) and you are contracting as a Consumer and the Seller of a Lot is a trader, you will have a statutory right to cancel your purchase of that Lot if you change your mind for any reason. The provisions below set out your legal right to cancel in those circumstances.
- 25.2 You may cancel your purchase at any time from the date of our order confirmation up to the end of the fourteenth day after the day of collection of the lot by you or the person specified by you for collection.
- 25.3 To cancel your purchase, you must inform us of your intention to cancel it. You can do this by completing the model cancellation form which can be found on our website. If you use this method we will email you to confirm that we have received your cancellation. Alternatively, you send us your cancellation notice by any other method and then your cancellation is effective from the date you send us the email or post the letter to us.
- 25.4 If you exercise your right to cancel your purchase, you will receive a refund of the total amount due paid for the Lot in accordance with clause 7. When exercising the cancellation right, you must return the lots to us immediately at your own cost (as set out below).
- 25.5 You are entitled to a reasonable opportunity to inspect the Lots (which will include removing them from their packaging and inspecting them). At all times, you must take reasonable care of the Lots and must not let them out of your possession. They must remain in original, untouched condition. If you are in breach of your obligations to take reasonable care of the Lots in this clause 25.4, we will have a claim against you and may deduct from the refund costs incurred by us as a result of the breach.
- 25.6 This provision does not affect your statutory rights.
- 25.7 The cancellation right described in this clause 25 is in addition to any other right that you might have to reject a Lot, for instance because it is a deliberate forgery as set out in clause 17 above.
26. **EXERCISING THE RIGHT TO CANCEL**
- 26.1 Where you have validly returned a Lot to us under your right of cancellation described in clause 25, we will refund the full amount paid by you for the Lot.
- 26.2 Please note that we are permitted by law to reduce your refund to reflect any reduction in the value of the Lot, if this has been caused by your handling of the Lot in a way contrary to the conditions specified in these terms or which would not be permitted during a pre-sale exhibition held prior to an auction. If we refund you the price paid before we are able to inspect the Lot and later discover you have handled the Lot in an unacceptable way, you must pay us an appropriate amount.
- 26.3 You will be responsible for returning the Lot to us at your own cost.
- 26.4 We will process any refund due to you within the deadlines below:
(a) if you have collected the Lot but have not returned it to us: fourteen days after the day on which we receive the Lot back from you or, if earlier, the day on which you provide us with evidence that you have sent the Lot back to us; or
(a) if you have not collected the Lot or you have already returned the Lot to us: 14 days after you inform us of your decision to cancel your contract.
- 26.5 We will refund you using the same means of payment that you used for the transaction.
- 26.6 Legal ownership of a Lot will immediately revert to the Seller if we refund any such payment to you.
- 27.1 **DISPUTES**
Any dispute not herein provided for shall be settled at the sole discretion of the Auctioneer.
28. **FORCE MAJEURE**
We shall not be in breach of these Conditions nor liable for the delay in performing, or failure to perform, our obligations under these Conditions (or otherwise) if such a delay or failure results from events, circumstances or causes beyond our reasonable control.
29. **ENTIRE AGREEMENT**
These Conditions constitute the entire agreement between the parties and supersede and extinguish all previous agreements, promises, assurances warranties representations and understandings between them, whether written or oral, relating to its subject matter. Except as set out in these Conditions, no variation of these Conditions shall be effective unless it is in writing and signed by the parties (or their authorised representative).
30. **IMAGES**
Prior written consent must be sought by the buyer or any other party for the use of any images, illustrations and written materials produced by or for Parker Fine Art Auctions Ltd relating to a lot or sale, including the contents of a catalogue. Copyright for any of the aforementioned will remain the property of Parker Fine Art Auctions Ltd, subject to the provisions of the Copyright, Design and Patents Act 1988. Parker Fine Art Auctions Ltd and the seller make no representations or warranties that the buyer of a lot will acquire any copyright to other reproduction rights to it.
31. **GOVERNING LAW AND JURISDICTION**
These Conditions shall be governed by and construed in accordance with English law and the parties irrevocably submit to the exclusive jurisdiction of the English courts.



PARKER
FINE ART AUCTIONS
Hawthorn House | East Street | Farnham | Surrey | GU9 7SX

Thursday 11th September 2025

01252 20 30 20
info@parkerfineartauctions.com
parkerfineartauctions.com

