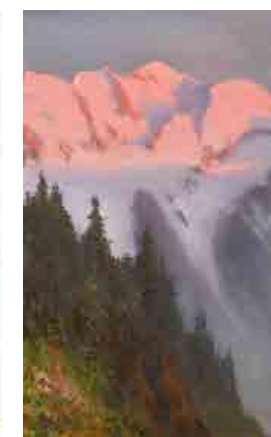




PARKER  
FINE ART AUCTIONS  
Fine Paintings  
&  
Frames Sale

Thursday 8th January 2026  
at 11am





*Wishing you a Happy New Year!*



## Forthcoming Fine Paintings & Frames Sale 5th February 2026

Closing date: Wednesday 7th January

---

Consign to our sales: No commission or illustration charges  
Just £15 (+VAT) per lot and 1.5% (+VAT) loss and damage waiver

# PARKER

## FINE ART AUCTIONS

Hawthorn House | East Street | Farnham | Surrey | GU9 7SX

### Fine Paintings & Frames Sale

Thursday 8th January 2026

Paintings starting at 11am

Frames starting at 2pm

#### VIEWING

Friday 2nd January 10am to 4pm

Saturday 3rd January 10am to 2pm

Sunday 4th January 10am to 2pm

Monday 5th January 10am to 4pm

Tuesday 6th January 10am to 4pm

Wednesday 7th January 10am to 4pm

Thursday 8th January from 9am

Telephone bids and absentee bids will be accepted until 9am on the day of the sale.

01252 20 30 20 | [info@parkerfineartauctions.com](mailto:info@parkerfineartauctions.com)

#### LIVE ONLINE BIDDING AT

**the saleroom**  
The home of art & antiques auctions

[the-saleroom.com](http://the-saleroom.com)

**BID LIVE ONLINE FOR £3  
PER AUCTION**  
**easy Live Auction .com**

[easyliveauction.com](http://easyliveauction.com)

Each lot subject to a buyer's premium of 25% + VAT (plus additional online bidding fees where applicable)

#### Key to cover illustrations



Lot 72	Lot 40	Lot 36	Lot 305	Lot 311	Lot 317
Lot 189	<div>PARKER FINE ART AUCTIONS Fine Paintings &amp; Frames Sale Thursday 8th January 2026 at 11am</div>	Lot 208	Lot 321	<div>PARKER FINE ART AUCTIONS Fine Paintings &amp; Frames Sale Thursday 8th January 2026 at 11am 01252 20 30 20 <a href="mailto:info@parkerfineartauctions.com">info@parkerfineartauctions.com</a> <a href="http://parkerfineartauctions.com">parkerfineartauctions.com</a></div>	Lot 322
Lot 94	Lot 136	Lot 106	Lot 332	Lot 340	Lot 353
Lot 206	Lot 178	Lot 194	Lot 389	Lot 396	Lot 419
		Lot 149	Lot 421	Lot 431	Lot 436
		Lot 73			

Parker Fine Art Auctions Ltd

Hawthorn House, East Street, Farnham, GU9 7SX

Registered in England 12554522 VAT Registration No. 347 2406 07

All terms and conditions are on our website [parkerfineartauctions.com](http://parkerfineartauctions.com)

Please note: droite de suite is paid by the vendor



Photography by PRC Digital [office@prcdigital.co.uk](mailto:office@prcdigital.co.uk)

## British and European Paintings pre 1850



1. After Rembrandt van Rijn  
(1606-1669) Dutch  
"The Three Trees"  
Engraving on Strasbourg Lily  
watermarked paper  
Unframed 8.4" x 11.2"  
(21.3 x 28.5cm)  
£200-£300



2. After Adriaen van Ostade (1610-1685) Dutch  
"The Quack"  
Engraving  
Arched 5.5" x 4.6" (14 x 11.8cm)  
£100-£200





3. After Thomas Howell Jones (fl.1823-1848) British  
 "A Regular Damper, And No Mistake"  
 Print  
 11.25" x 8" (28.6 x 20.3cm)  
 £100-£150



4. Early 19th Century English School  
 "Going to Market"  
 Etching published by P Stampa  
 12.75" x 10" (32.4 x 25.4cm)  
 £100-£150



5. After John Collet (1725-1780) British  
 "The Unfortunate Discovery"  
 Etching  
 Printed by Bowles and Carver  
 5.75" x 4.4" (14.6 x 11cm)  
 £100-£150



6. After William Heath (1795-1840) British  
 "Take Care of Your Pockets. A Hint for the Orthodox"  
 Print published by Thomas McLean  
 Unframed 9.5" x 13.5" (24.2 x 34.2cm)  
 Together with four other prints by various hands (5)  
 £100-£200



7. After Pieter Jacobsz van Laer (1599-1642) Dutch  
 "The Farmyard"  
 Engraved by P C Canot  
 Published by John Boydell  
 Unframed 17" x 22.75" (43.2 x 57.8cm)  
**£100-£150**



8. After Abraham van Diepenbeeck (1596-1675) Dutch  
 "La Bataille Gaignee"  
 Engraved by Peeter Clouwet  
 Unframed 14.5" x 19.25" (36.9 x 48.8cm)  
**£100-£150**



9. After Guido Reni (1575-1642) Italian  
 "Joseph and Potiphar's Wife"  
 Engraved by Robert Strange  
 Unframed 13.75" x 18" (34.9 x 44.4cm)  
 And two other engravings by the same hand (3)  
**£100-£150**



10. After Henry Singleton (1766-1839) British  
 "The Battle Between The Archduke Charles and General Moreau"  
 Engraved by Nicolo Schiavonetti  
 Unframed 19.5" x 25.75" (49.5 x 65.4cm)  
**£100-£150**



11. After Thomas Gainsborough (1727-1788) British  
 "The Watering Place"  
 Engraved by the artist  
 Unframed 9.75" x 12.75" (24.8 x 32.4cm)  
**£100-£150**



12. Late 18th Century French School  
 "Assignat de - Cinquante - Sols"  
 Bank notes from the French Revolution 1793  
 14.25" x 19" (36.2 x 48.2cm)  
**£100-£200**





13. After Henry Thomson (1773-1843) British  
 "Crossing The Bridge"  
 Engraved by W Say  
 24" x 16.25" (61 x 41.2cm)  
 £100-£200



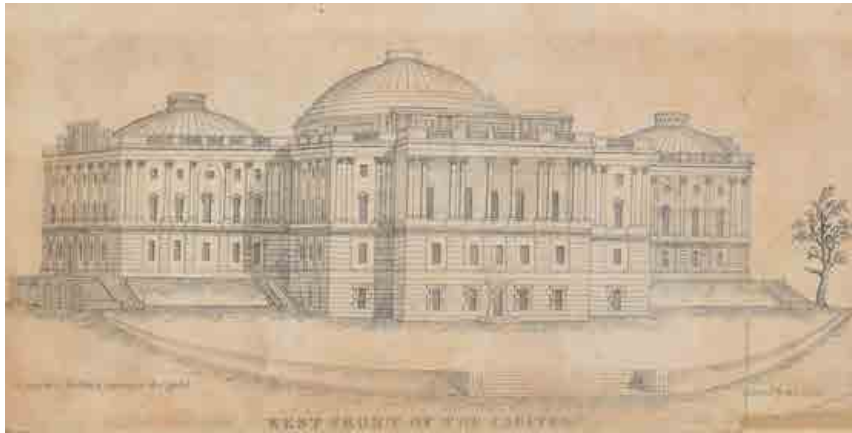
14. After William Beechey (1753-1839) British  
 "Horatio, Lord Nelson"  
 Engraved by Edward Bell  
 24.75" x 16.5" (62.8 x 42cm)  
 £100-£150



15. After Benjamin Wilson (1721-1788) British  
 "Lady Stanhope"  
 Proof engraving by James Basire (1730-1802)  
 Unframed 18" x 13.4" (45.7 x 34cm)  
 £100-£150



16. After John Downman (1750-1824) British  
 Five Portraits of Elegant Ladies  
 Prints  
 8" x 6.25" (20.3 x 15.8cm) and varying other sizes (5)  
 £100-£150



17. **C Bullfinch (19th Century) American**  
 "West Front of the Capitol"  
 Etched by W I Stone  
 2.4" x 7" (6.2 x 17.8cm)  
 £100-£150



18. **Early 19th Century English School**  
 "The Happy Village"  
 Mezzotint  
 Published by John Fairbur  
 9.25" x 14" (23.5 x 35.5cm)  
 £100-£150



19. **William Havell (1782-1857) British**  
 "Riverside Scene"  
 Watercolour  
 Inscribed on labels verso  
 14.5" x 22.75" (36.8 x 57.8cm)  
 £100-£150

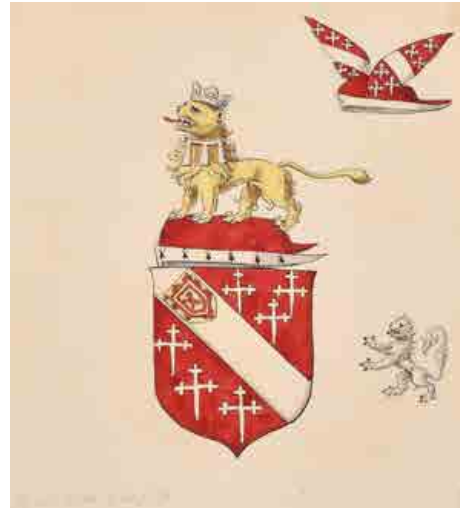




20. **Benjamin Barker of Bath**  
(1776-1838) **British**  
"Wick Rocks, Nr. Bath, Somerset"  
Watercolour  
Inscribed on the mount and the plaque  
9" x 12" (22.8 x 30.5cm)  
And a companion piece "Landscape,  
Nr Bath, Somerset", a pair (2)  
Provenance: Dr John Field  
£100-£150



21. **Dr William Crotch (1775-1847) British**  
"Showers Above Hampstead"  
Chalk and ink  
Inscribed on labels verso  
4" x 6.6" (10.1 x 16.8cm)  
Provenance: Abbott & Holder Ltd, London.  
Notes: Crotch was an English composer and organist whose first recital was at the age of only four years old. He became Heather Professor of Music at Oxford University. In 1822 he was appointed to the Royal Academy of Music where he composed his oratorio 'The Captivity of Judah' (having first written a version at only fourteen years old).  
£100-£150



22. **19th Century English School**  
Six Coats of Arms Studies  
Watercolour and pencil  
Unframed 7.5" x 6.75" (19 x 17.1cm) and various other sizes (6)  
£100-£200



23. **George Moutard Woodward**  
(1760-1809) **British**  
In Conversation  
Ink  
Signed, and inscribed verso  
6.25" x 3.75" (15.8 x 9.5cm)  
Provenance: Abbott and Holder  
£100-£150



24. **Early 19th Century English School**  
A Silhouette Style  
Standing Figure  
Ink and wash  
10.75" x 8.5"  
(27.3 x 21.6cm)  
£100-£150



25. Early 19th Century English School  
 Profile of a Man  
 Pencil  
 Oval 4.4" x 3.4" (11.2 x 8.5cm)  
 £100-£150



26. Early 19th Century English School  
 Bust Portrait of a Man  
 Watercolour and pencil  
 7.5" x 5.5" (19 x 14cm)  
 £100-£150



27. Early 19th Century English School  
 Bust Portrait of a Man  
 Chalk  
 24" x 19" (61 x 48.2cm)  
 £100-£150





28. **William Staveley (fl.1785-1805) British**  
 "Mrs Hamilton Nisbet (nee Mary Manners), 1756-1834"  
 Watercolour and pencil  
 Inscribed on a label verso  
 11.25" x 9.25" (28.6 x 23.4cm)  
 Provenance: The Fine Art Society Ltd, London  
**£100-£150**



29. **Samuel de Wilde (1751-1832) British**  
 Portrait of a Man Writing  
 Watercolour  
 Signed and dated 1807  
 10" x 8" (25.4 x 20.3cm)  
**£200-£300**



30. **19th Century English School**  
 Full Length Portrait of a Man  
 Watercolour, pencil and wash  
 12.5" x 8.25" (31.8 x 20.9cm)  
**£100-£150**



31. Late 18th Century European School  
Bust Portrait of a Lady  
Oil on canvas (originally oval)  
Bears an inscription 'Barbara (Widman) O'Reilly, 1673'  
27.25" x 22.75" (69.2 x 57.8cm)  
£200-£300



32. Late 18th Century French School  
Bust Portrait of a Man  
Oil on canvas  
Inscribed on a plaque  
24" x 19.5" (61 x 49.5cm)  
£300-£400



33. George Watson (1766-1837) British  
Portrait of Reverend Andrew Jameson (1779-1861)  
Oil on canvas  
Unframed 30" x 25" (76.2 x 63.5cm)  
Provenance: Robert William Jameson (Writer to the Signet) (the great nephew of the sitter), Robert Pringle (Writer to the Signet) and his wife Catherine Jameson (daughter of Robert Jameson); Julia Pringle (daughter of Robert and Catherine Jameson); Hugh Gordon Watson (nephew of Julia Pringle).  
Notes: Robert William Jameson was also a sitter for George Watson and the painting is in the Scottish National Portrait Gallery  
£100-£200



34. After Godfrey Kneller (1646-1723) German/British  
Portrait of King William III, wearing the Order of the Garter  
Oil on canvas  
Painted oval  
Unframed 29" x 24.5" (73.7 x 62.2cm)  
£200-£400





35. 17th Century English School  
George Villiers, First Duke of Buckingham  
Painted after his Assassination on 1st August 1628  
Oil on panel  
Inscribed on a plaque  
20.5" x 26.5" (52.1 x 67.3cm)  
Provenance: Christie's London, 10th February 1967, lot 131  
£600-£800



36. Circle of Thomas Hudson (1701-1779) British  
Portrait of John Jalland of Scarrington  
Oil on canvas  
Inscribed on labels verso  
30" x 24.5" (76.2 x 62.3cm)  
£800-£1200



37. Manner of Herman van der Mij (1684-1741) Dutch  
Portrait of a Lady  
Oil on canvas  
Painted oval  
30" x 25" (76.2 x 63.5cm)  
£800-£1200



38. **Manner of Gaspard Dughet (1615-1675) Italian**  
**Figures in a Classical Landscape**  
 Oil on canvas  
 Circular  
 Unframed 12.5" x 12.5" (31.7 x 31.7cm)  
**£200-£300**



39. **After Bernardino Passeri (1540-1596) Italian**  
**The Death of the Virgin**  
 Oil on canvas  
 Indistinct signature  
 19.75" x 15.5" (50.2 x 39.4cm)  
**£300-£500**



40. Anthony Thomas Devis (1729-1816) British

"The Rest on the Flight into Egypt"

Oil on canvas

Signed

In a fine carved giltwood frame

25" x 32.75" (63.5 x 83.3cm)

£2000-£3000





41. Circle of Pieter van Bloeman (1657-1720) Flemish  
 Figures in an Italianate Landscape  
 Oil on canvas  
 11.5" x 18" (29.3 x 45.7cm)  
 £500-£700



42. 17th Century Dutch School  
 The Flight into Egypt  
 Oil on copper  
 6.75" x 8.75" (17.2 x 22.2cm)  
 £300-£400



43. George Morland (1763-1804) British  
'Stealing Apples'  
Oil on canvas  
Signed  
In a carved giltwood frame  
16" x 20.5" (40.6 x 52.1cm)  
£1000-£1500



44. Circle of Willem van Herp (1614-1677) Flemish  
 "The Visitation" after Peter Paul Rubens  
 Oil on copper  
 22.25" x 28.5" (56.5 x 72.3cm)  
 £800-£1200



45. **James Shaw (fl.1769-1784) British**  
 Still Life of Fruit and Nuts  
 Oil on canvas  
 13.5" x 18" (34.3 x 45.7cm)  
 £200-£300



46. **Circle of Frans Franken 11 (1581-1642) Flemish**  
 Esther before Ahasuerus  
 Oil on canvas  
 In a Carved Giltwood Frame  
 24" x 28.5" (61 x 72.3cm)  
 £300-£500



47. **Circle of William van de Velde the Younger (1633-1707) Dutch**  
 A Beach Scene, with figures unloading the catch  
 Oil on canvas  
 In a carved giltwood frame  
 25" x 30" (63.5 x 76.2cm)  
 £400-£600





48. Attributed to Carel de Moor (1655-1738) Dutch  
"Flight into Egypt"  
Oil on copper  
12.75" x 16.25" (32.4 x 41.3cm)  
£1000-£1500



49. 18th Century Dutch School

Figures Outside a Tavern

Oil on panel

18.5" x 24" (47 x 61cm)

£1000-£1500





50. Lance Thackeray (1870-1916) British  
A set of four numbered prints titled "Bridge"  
Print  
Signed in pencil  
Unframed 11.5" x 16" (29.2 x 40.6cm) (4)  
£200-£300



51. After Carl Schloesser (1832-1914) German  
"La Premiere Chope"  
Lithograph by Durand  
Unframed 10.6" x 15.25" (27 x 38.8cm)  
£100-£200



52. After Edward Armitage (1817-1896) British  
"The Battle of Meeanee"  
Engraved by J B Allen  
Unframed 6.4" x 10" (16.3 x 25.4cm)  
£100-£150



53. **James Abbott McNeill Whistler (1834-1903) American**  
 "Gants de Suede" (1890)  
 Lithograph  
 Unframed 8.75" x 7" (22.2 x 17.8cm)  
 £200-£300



54. **Pierre-August Renoir (1841-1919) French**  
 "Standing Bather"  
 Etching  
 Unframed 6.25" x 4.25" (16.8 x 10.8cm)  
 £200-£300



55. **Pierre-August Renoir (1841-1919) French**  
 "La Pierre au Trios Croquis"  
 Lithograph  
 Unframed 9.75" x 12.75"  
 (24.8 x 32.4cm)  
 £200-£300



56. After Thomas Hopper (19th Century) British  
Design for The Houses of Parliament  
Print  
Unframed 12.5" x 25" (31.8 x 63.5cm)  
£100-£150

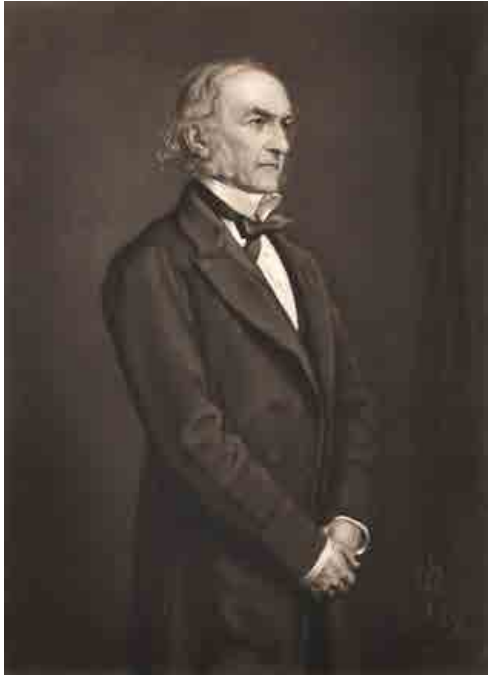


57. After Thomas Walmsley (1763-1806) British  
"This View of Roughty Bridge, Co. Kerry"  
Engraved by F Jukes  
Unframed 11.75" x 16.65" (29.8 x 42.3cm)  
£100-£150



58. N Desmons (19th Century) French  
"Habitation et Propriete de Mr Henri Fournier",  
Rio de Janeiro  
Lithograph by A Guesdon  
Unframed 11" x 29.5" (27.9 x 74.9cm)  
£100-£150





59. After John Everett Millais (1829-1896) British  
Portrait of William Ewart Gladstone  
Mezzotint by Thomas Barlow  
Signed by both in pencil  
Unframed 19" x 13.75" (48.2 x 34.8cm)  
£100-£200



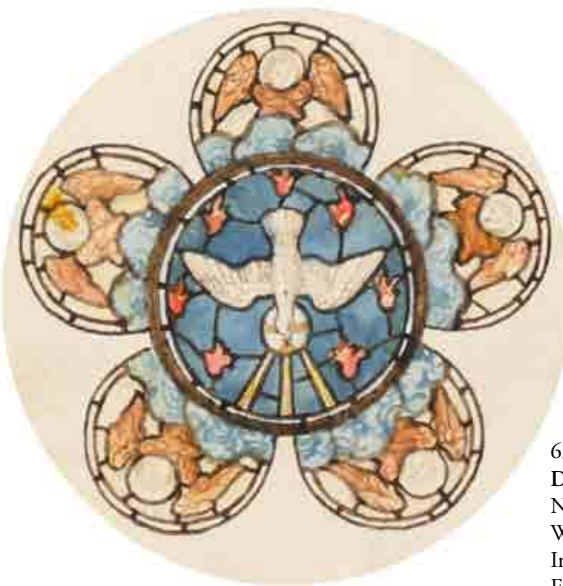
60. After Sir Edwin Henry Landseer (1802-1873) British  
"Sir Edwin Henry Landseer"  
Mezzotint by Samuel Cousins  
Unframed 16.35" x 12.75" (41.5 x 32.3cm)  
£200-£300



61. Cornelis Kruseman (1797-1857) Dutch  
Portrait of a Lady  
Pencil and wash  
Signed, inscribed 'Ischia' and dated 1841 in pencil  
In a maple frame 8.75" x 6" (22.2 x 15.2cm)  
£100-£150



62. 19th Century English School  
Portrait of Seated Man  
Watercolour  
9" x 8" (22.8 x 20.3cm)  
£100-£150



63. E Penwarden (19th Century) British  
Designed for JAS Powell and Sons, London  
North Nave Stained Glass Window  
Watercolour  
Inscribed  
Framed as a pair (overall) 9.5" x 7.75"  
(24.2 x 19.7cm) and five others by  
various hands (6)  
Provenance: Mrs Y Clarke  
£100-£200





64. **Charles Rowbotham (19th Century) British**  
 "A Study From Life"

Pencil

Signed, inscribed and dated May 9 1874

19" x 12.75" (48.2 x 32.4cm)

Provenance: Mrs Y Clarke

£100-£150



65. **Ernest Arthur Rowe (1863-1922) British**  
 'Crimson Rambler, Harleyford Manor, Marlowe'

Watercolour

Signed, and inscribed on labels verso

7" x 5" (17.8 x 12.7cm)

Provenance: Fine-Lines Fine Art, Warwickshire

£200-£300



66. **Sam Bough (1822-1878) British**  
 "The Wreck"

Watercolour and wash

Signed, and inscribed on a label verso

12.25" x 19" (31.1 x 48.2cm)

£100-£150



67. **Newton Benett (1854-1914) British**  
 "Kirkstall Lock, on the River Aire" after JMW Turner

Watercolour

Dated 1887, and inscribed on a label verso

6.25" x 9.25" (15.8 x 23.4cm)

Provenance: Chris Beetles Limited, London

£100-£150



68. **Edgar West (1857-1889) British**  
**"At The Foot of the Downs"**  
 Watercolour  
 Signed, and inscribed on a label verso  
 19" x 26" (48.2 x 66.1cm)  
 £100-£200



69. **Frederick Edward Joseph Goff (1855-1931) British**  
**"Sonning"**  
 Watercolour  
 Signed and inscribed, and inscribed on a label verso  
 4.5" x 6" (11.4 x 15.2cm)  
 And the companion piece, "The Pool" a pair (2)  
 £200-£300

70. David Cox (1809-1885) British  
 "Richmond Castle, Yorkshire"  
 Watercolour  
 Inscribed on the mount  
 12.5" x 18.5" (31.7 x 47cm)  
 £300-£400



71. Kate Greenaway  
 (1846-1901) British  
 A Set of Six Studies of Children  
 Watercolour and ink  
 Some signed with initials  
 Of various sizes, framed as one  
 Overall 5.25" x 6.5" (13.3 x 14cm)  
 £200-£400



72. **Gabriel Loppe (1825-1913) French**  
Crevasses on the Mer de Glace, Mont Blanc, Chamonix  
Oil on board  
Signed  
9.75" x 6.5" (24.8 x 16.5cm)  
**£4000-£6000**





73. **Gabriel Loppe** (1825-1913) French  
Sunset on Mont Blanc, Chamonix  
Oil on board  
Signed  
9.75" x 6.5" (24.8 x 16.5cm)  
£1500-£2500



74. **James Faed Jnr (1856-1920) British**  
**"An Autumn Study"**  
 Oil on panel  
 Signed, and inscribed on labels verso  
 8.75" x 11.75" (22.2 x 29.8cm)  
 Provenance: Chalfont Galleries,  
 Buckinghamshire  
**£300-£400**



75. **Edwin Alfred Pettitt (1840-1912) British**  
**"Christchurch, Dorset"**  
 Oil on canvas  
 Signed, and inscribed on a plaque,  
 and inscribed verso  
 14" x 21" (35.5 x 53.2cm)  
**£200-£300**



76. 19th Century French School  
Study of a Seated Male Nude  
Oil on board  
22.5" x 15" (57.1 x 38.1cm)  
£400-£600



77. Arthur Trevor Hadden (1864-1941) British  
"A Gateway, Algiers"  
Oil on canvas  
Signed, inscribed verso (now relined)  
30" x 20" (76.2 x 50.8cm)  
£400-£600



78. Henry Schafer (1833-1916) French  
"Brunswick"  
Oil on panel  
Signed with monogram and dated 1889,  
and inscribed on a plaque  
16" x 12" (40.6 x 30.5cm)  
£200-£400





79. Jozef Demski (1888-1949) Polish  
Hauling the Wagons  
Oil on panel  
Signed  
8" x 12.25" (20.3 x 31.1cm) (2)  
£150-£250



80. E R Till (19th Century) Swiss  
Lucerne with Mount Pilatus in the distance  
Oil on board  
Signed  
5.5" x 7.75" (14 x 19.7cm)  
And two others by the same hand (3)  
£100-£150

## Marine Paintings

81. After Richard Wright (c.1735-c.1775) British  
"The Fishery"  
Engraved by William Woollett  
15.25" x 20.75" (38.7 x 52.7cm)  
£100-£150



82. Thomas Goldsworthy Dutton (1819-1891) British  
"Ceylon"  
Lithograph  
In a maple frame  
15.75" x 24" (40 x 61cm)  
£100-£200



83. After H J Vernon (19th Century) British  
"The Channel Fleet"  
Lithograph  
11.5" x 18.25" (29.2 x 46.2cm)  
£100-£150





**84. William Lionel Wyllie (1851-1931) British**

"Fishing Boats, off Ryde"

Etching

Signed in pencil, and inscribed on a label verso

6.75" x 14.85" (17.2 x 37.7cm)

Provenance: Robert Dunthorne & Son Ltd, The Rembrandt Gallery, London

And another by the same hand, "In the Solent, Moving towards Ryde, Isle of Wight"

Etching

Signed in pencil, and inscribed on a label verso

8" x 19.15" (20.3 x 48.5cm) (2)

£100-£200



**85. John Lynn (act. 1826-1869) British**

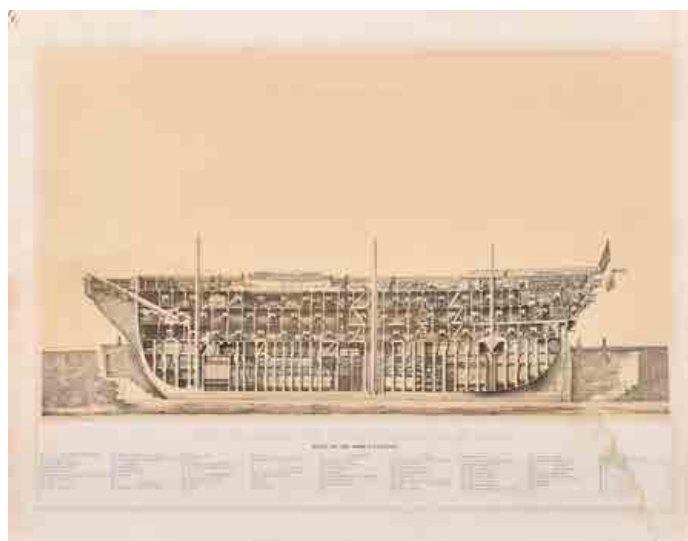
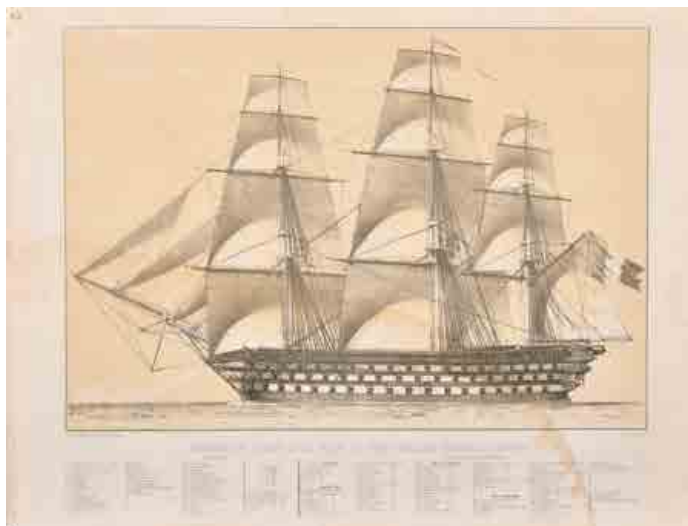
"Vernon"

Engraved by William Overend Geller

Unframed 16" x 27" (40.6 x 68.6cm)

£100-£200





86. **Antoine Leon Morel-Fatio (1810-1871) French**  
 "Vaisseau de 1er Rang a la Voile au Plus Pres, Les Amures a Babord"  
 Lithograph by Boucher  
 Unframed 16" x 23.5" (40.6 x 59.7cm)  
 And the companion piece, a pair (2)  
**£200-£300**



87. **William E Harris (1860-1930) British**  
 Boats in an Estuary  
 Watercolour  
 Signed and dated 1895  
 12.75" x 18.75" (32.4 x 47.6cm)  
**£200-£300**



88. **Henry Moore (1831-1895) British**  
 "After Rough Weather, Brixham Smack Putting to Sea"  
 Ink  
 Signed and dated 1884, and inscribed verso  
 6" x 9.5" (15.3 x 24.2cm)  
 And three others by the same hand (4)  
**£500-£700**

89. **Frederick Edward Joseph Goff (1855-1931) British**  
**"On The Lower Thames"**  
 Watercolour  
 Signed and inscribed  
 10" x 17.6" (25.4 x 44.7cm)  
 £200-£300



90. **Frederick James Aldridge (1850-1933) British**  
**"Off Shoreham, Sussex"**  
 Watercolour  
 Inscribed on a label verso  
 10" x 14.5" (25.4 x 36.8cm)  
 Provenance: The Bourne Gallery, Reigate  
 £100-£200



91. **Konig (20th Century) European**  
**Figures on a Beach at Dusk**  
 Oil on canvas  
 Signed  
 27.75" x 31.5" (70.5 x 80cm)  
 £150-£250







92. **John Willes Johnson (1793-1857) British**  
**Figures on the Banks of an Estuary**  
 Oil on canvas  
 Signed and dated 1829  
 13" x 16" (33 x 40.6cm)  
 And the companion piece, a pair (2)  
 £200-£300

93. **Thomas Luny (1759-1837) British**  
**Unloading the Catch**  
 Oil on board  
 9" x 12" (22.8 x 30.5cm)  
 £300-£500



94. **19th Century Chinese School**  
**HMS Satellite in Hong Kong Harbour**  
 Oil on canvas  
 18" x 23.5" (45.7 x 59.7cm)  
 £500-£700

95. **William Anslow Thornley (fl.1857-1898) British**  
**"Saint Michael's Mount"**  
 Oil on canvas  
 Signed, and inscribed on a plaque  
 14" x 12" (35.5 x 30.5cm)  
 Provenance: The Old Customs House, Hampshire  
**£300-£500**



96. **Circle of Abraham Hulk (1813-1897) Dutch**  
**A Shipping Scene**  
 Oil on panel  
 Unframed 8.5" x 11.5" (21.7 x 29.2cm)  
**£100-£150**



97. **William Eyre (1891-1979) British**  
**"Morning, Portmadoc, N. Wales"**  
 Oil on card  
 Signed, and inscribed verso  
 Unframed 15.25" x 22.75" (38.8 x 57.8cm)  
**£200-£300**



## Sporting and Animalia Paintings



98. After Thomas Blinks (1860-1912) British  
"Terrier and Ferrets"  
Engraving  
Unframed 21.5" x 16" (54.6 x 40.6cm)  
£100-£150



99. After Charles Cooper Henderson (1803-1877) British  
"Changing Horses"  
Engraved by J Harris  
In a cushioned maple frame  
17.5" x 26.5" (44.4 x 67.3cm)  
And the companion piece "All Right", a pair (2)  
£200-£300

100. 19th Century English School  
 "Golf"  
 Watercolour  
 Signed with initials EP and inscribed  
 8.5" x 6.5" (21.6 x 16.5cm)  
 And another by the same hand "Sport"  
 and two others by another hand (4)  
 £100-£150



101. Frank Paton (1855-1909) British  
 "Arise"  
 Watercolour  
 Signed and dated 1898, and inscribed on the plaque  
 11.25" x 14.75" (28.6 x 37.4cm)  
 Provenance: Gladwell Brothers, London  
 £200-£300



102. Circle of Hayward Hardy (1842-1933) British  
 A Lion's Head  
 Oil on canvas  
 Unframed 16" x 20" (40.6 x 50.8cm)  
 £100-£150



103. John Ferneley Jnr (1759-1837) British  
The Hunt in Full Cry  
Oil on canvas  
12" x 24" (30.5 x 61cm)  
£300-£500



104. Lionel Edwards  
(1878-1966) British  
A Saddled Hunter in a Stable  
Oil on canvas  
Signed and dated 'April 1911'  
18" x 24" (45.7 x 61cm)  
£600-£800





105. Walter Robin Jennings (1927-2005) British  
 "Copper and Blue"  
 Oil on canvas  
 Signed and inscribed verso  
 14" x 18" (35.5 x 45.7cm)  
 Provenance: John Noott Galleries, Broadway  
 £100-£150



106. Doris Zinkeisen (1897-1991) British  
 Carolyn Liddell at Lyndon Hall, Northumberland  
 Oil on canvas  
 Signed  
 25" x 30" (63.5 x 76.2cm)  
 £600-£800

## British and European Paintings Post 1900

107. Hedley Fitton (1859-1929) British  
 "The Pantheon, Rome"  
 Etching  
 Signed in pencil  
 17.25" x 21.75" (43.8 x 55.2cm)  
 £300-£500

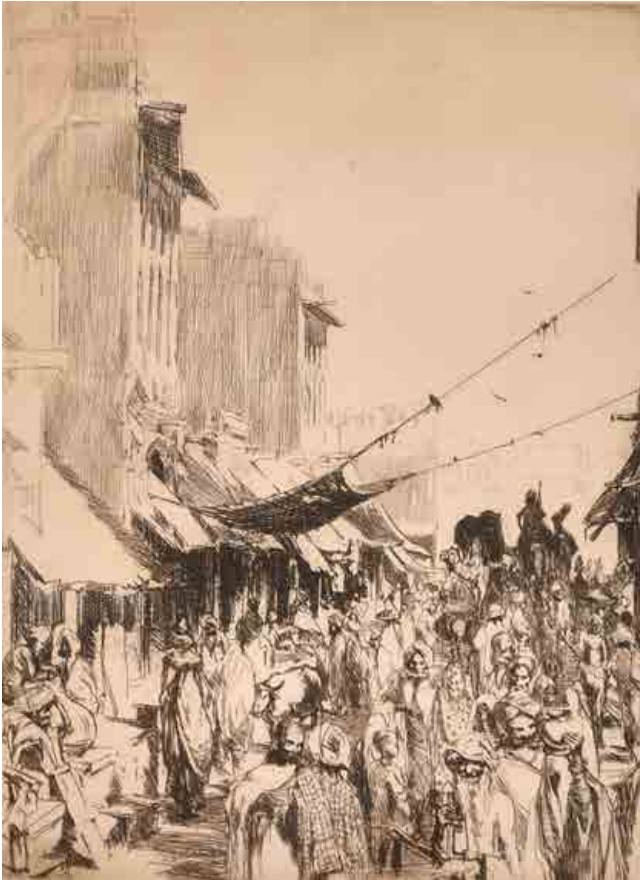


108. William Nicholson (1872-1949) British  
 "Golf (October)"  
 Woodcut in colours  
 Signed and dated 1898 in pencil  
 7.5" x 7.5" (19.1 x 19.1cm)  
 £200-£300



109. After Pablo Picasso (1881-1973) Spanish  
 "Le Vieux Roi"  
 Print  
 26" x 19.5" (66 x 49.5cm)  
 £150-£250

## Ernest Stephen Lumsden



110. Ernest Stephen Lumsden (1883-1948) British  
"The Bazaar, Jodhpur" 1914 (India)

Etching

Signed and inscribed in pencil

Mounted, unframed 6.5" x 4.75" (16.5 x 12.1cm).

Notes: From a limited edition of fifty impressions printed by the artist.

Reference: Lumsden 150

£200-£300



111. Ernest Stephen Lumsden (1883-1948) British  
"Fort and City", 1914 (India)

Etching

Signed in pencil, and inscribed and numbered 30

Mounted, unframed 9.85" x 7.75" (25 x 19.7cm).

Notes: From a limited edition of forty five impressions printed by the artist.

Reference Lumsden 161

£350-£450



112. Ernest Stephen Lumsden (1883-1948) British  
 "The Market Place", 1914 (India)

Etching

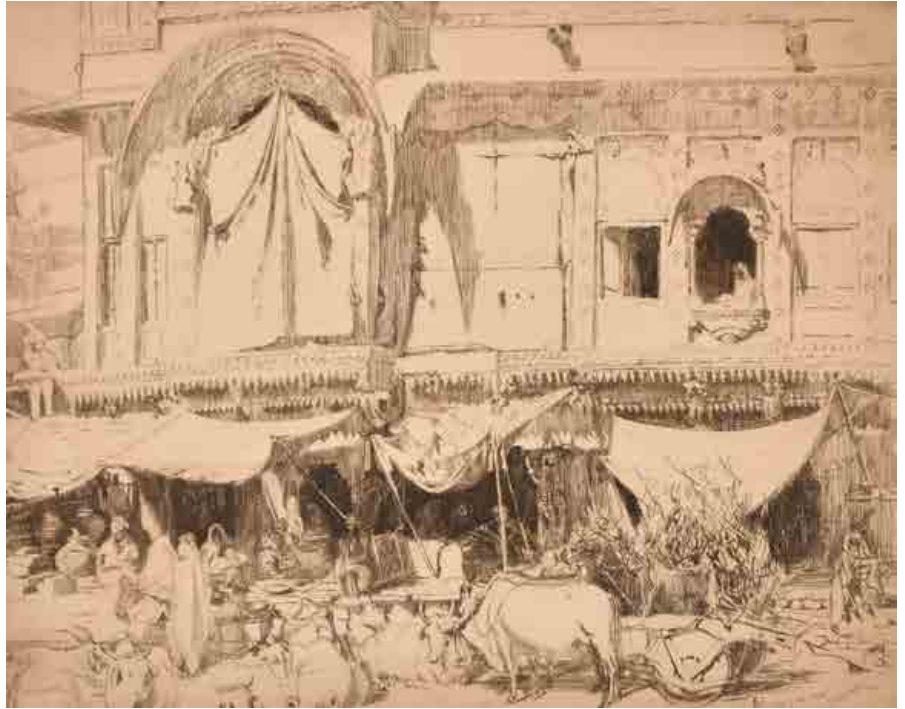
Signed in pencil, and inscribed

Mounted, unframed 7.75" x 9.8" (19.7 x 25cm).

Notes: From a limited edition of forty three  
 impressions printed by the artist.

Reference: Lumsden 159

£350-£450



113. Ernest Stephen Lumsden  
 (1883-1948) British  
 "A Mela Crowd", 1920 (India)

Etching

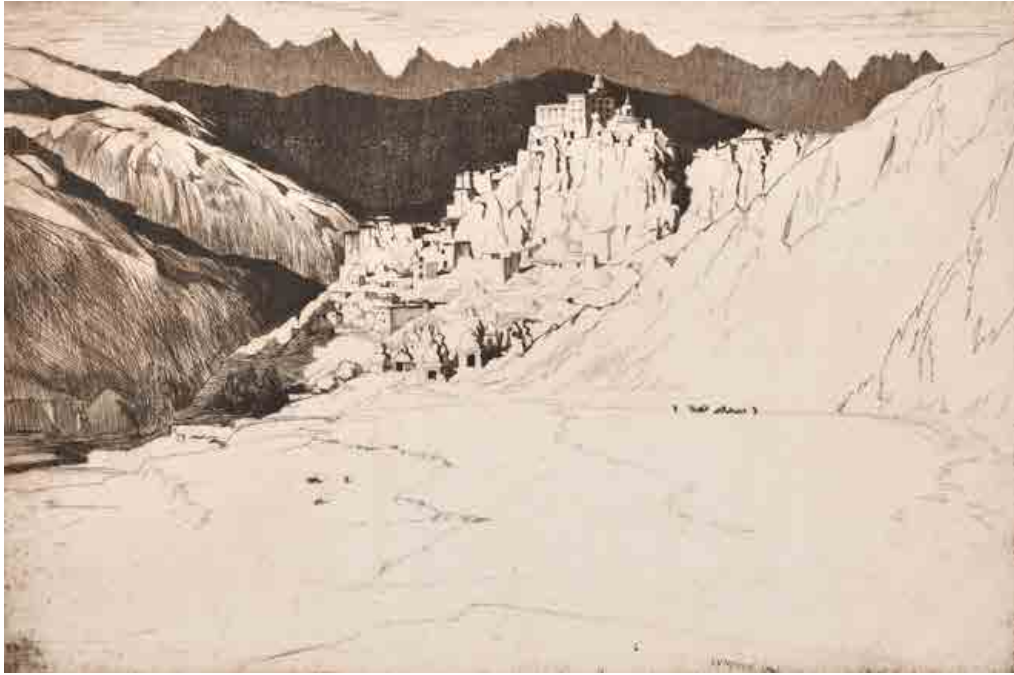
Signed and numbered 6/50 and  
 inscribed in pencil

Mounted, unframed 9.5" x 14.75"  
 (24.2 x 37.4cm).

Notes: From a limited edition of  
 fifty impressions printed by the artist.

Reference Lumsden 192

£400-£600



**114. Ernest Stephen Lumsden (1883-1948) British**

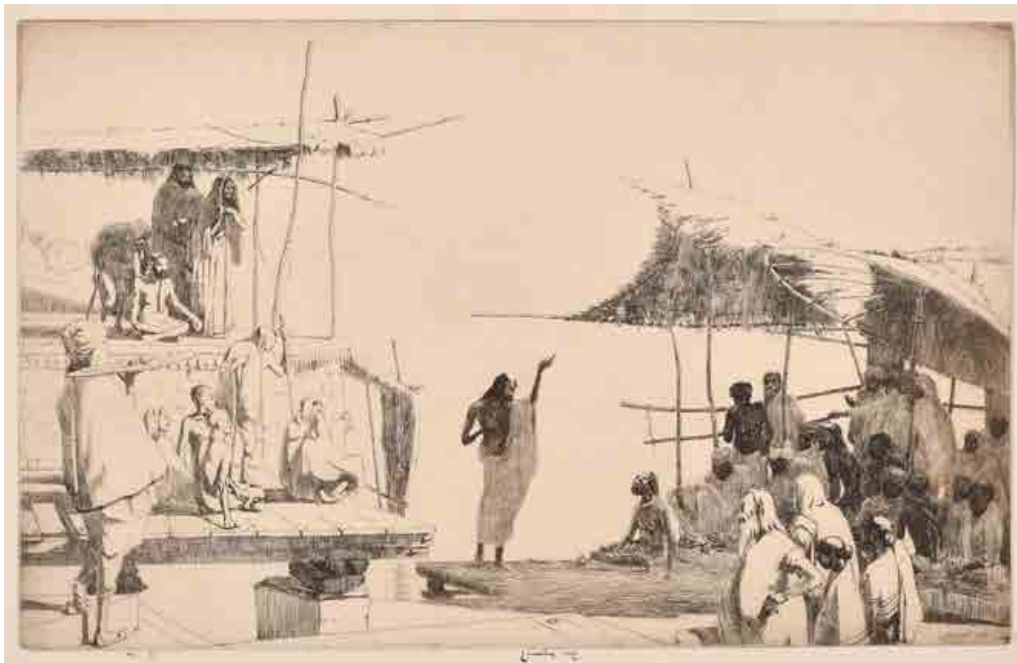
"Lamayuru", 1921 (India)

Etching

Signed and numbered 91.106 in pencil

Mounted, unframed 7.75" x 11.75" (19.7 x 29.8cm).

Notes: From a limited edition of one hundred and six impressions printed by the artist. Reference Lumsden 234  
£350-£450



**115. Ernest Stephen Lumsden (1883-1948) British**

"A Modern Bethesda (Varanasi)", 1923-4 (India)

Etching

Signed and numbered 49.50, and inscribed in pencil

Mounted, unframed 8.4" x 13.3" (21.4 x 33.9cm).

Notes: From a limited edition of fifty impressions printed by the artist. Reference Lumsden 269  
£300-£400

116. Ernest Stephen Lumsden (1883-1948) British  
 "The Bathers" 1919 (India)  
 Etching  
 Signed in pencil, and inscribed and numbered 3/45  
 Unframed 13.75" x 18" (34.9 x 45.7cm).  
 Notes: From a limited edition of forty five  
 impressions printed by the artist.  
 Reference Lumsden 178  
 £500-£700



117. Ernest Stephen Lumsden  
 (1883-1948) British  
 "Old Kashmir" 1922 (India)  
 Etching  
 Signed and numbered 7.50,  
 and inscribed in pencil  
 Mounted unframed 7.75" x 11.75"  
 (19.7 x 29.8cm).  
 Notes: From a limited edition of  
 fifty impressions printed by the artist.  
 Reference Lumsden 238  
 £400-£500





118. Circle of Henry Moore  
(1898-1986) British  
Head Study  
Etching  
Bears a signature and inscribed 'A/P'  
and dated '58  
11.5" x 10.25" (29.2 x 26cm)  
£100-£150



119. Circle of Henry Moore  
(1898-1986) British  
Untitled Shapes  
Etching in colours  
Bears a signature and inscribed 'AP'  
and numbered 8/10  
Overall 22" x 15" (55.8 x 38.2cm)  
and another similar (unframed) (2)  
£100-£150



120. Circle of Henry Moore  
(1898-1986) British  
Untitled  
Etching in colours  
Bears initials and inscribed 'A/P'  
10.25" x 9.2" (26 x 23.3cm)  
£100-£150



121. Circle of Henry Moore  
(1898-1986) British  
Head Study  
Screenprint  
Bears a signature, inscribed 'A/P 1 HC'  
and dated '49  
Unframed 19" x 12.5" (48.2 x 31.7cm)  
And two other screenprints by another hand (3)  
£100-£150



122. Circle of Henry Moore  
(1898-1986) British  
Figure Studies  
Screenprint  
Bears a signature and inscribed 'A/P B3'  
Unframed overall 21.75" x 19" (55.3 x 48.2cm)  
And three others by the same hand  
(and one verso) (4)  
£100-£150



123. Circle of Henry Moore  
(1898-1986) British  
Figures in a Window  
Etching  
Bears a signature, inscribed 'A/P'  
and numbered 33/100 in pencil  
Unframed 7.65" x 5.5" (19.3 x 14cm)  
£100-£150

# Elisabeth Frink



124. Elisabeth Frink (1930-1993) British  
"The Summoner's Prologue"  
Etching  
Unframed 19.75" x 13.4" (50.2 x 34cm)  
£200-£300



125. Elisabeth Frink (1930-1993) British  
"The Franklin's Tale"  
Etching  
Unframed 19.75" x 13.5" (50.2 x 34.3cm)  
£200-£300



126. Elisabeth Frink (1930-1993) British  
"The Wife of Bath's Tale"  
Etching  
Unframed 19.75" x 13.5" (50.2 x 34.4cm)  
£200-£300



127. **Lionello Balestrieri (1872-1958) Italian**  
 "Sitting Man by Window"  
 Etching aquatint  
 Signed and numbered 88 in pencil, and with printer's guild stamp  
 Unframed 17.5" x 23.75" (44.4 x 60.3cm)  
**£100-£150**



128. **Felix Kelly (1914-1994) New Zealander**  
 "Drifter and Paddle Steamers"  
 Printed for the Baynard Press for Schools Prints Ltd  
 Unframed 16.5" x 27" (41.8 x 68.6cm)  
**£100-£150**



129. **Rupert Shephard (1909-1992) British**  
 "A Paddington Church"  
 Lithograph  
 Signed, inscribed and numbered 41/60 in pencil  
 With frontispiece  
 Unframed 10.75" x 13" (27.3 x 33cm)  
 Together with another three of a "A Paddington Church" (4)  
**£100-£150**



## Andy Warhol



130. Andy Warhol (1928-1987) American  
"Marilyn - Orange"  
Offset lithograph printed and published by Te Neus in 1992  
Unframed (overall) 25.6" x 25.6" (65 x 65cm)  
£100-£150



131. Andy Warhol (1928-1987) American  
"Marilyn - Black"  
Offset lithograph printed and published by Te Neus in 1992  
Unframed (overall) 25.6" x 25.6" (65 x 65cm)  
£100-£150



132. Andy Warhol (1928-1987) American  
"Ten Marilyns"  
Poster published by Achenbach Editions  
Unframed (overall) 31.5" x 54.75" (80 x 139.1cm)  
£200-£300



133. **Herbert Gurschner (1901-1975) Austrian**  
**"Procession"**  
 Woodcut  
 Signed, inscribed and numbered 13/100 and No.35 in pencil  
 10" x 6.85" (25.4 x 17.5cm)  
 £300-£400

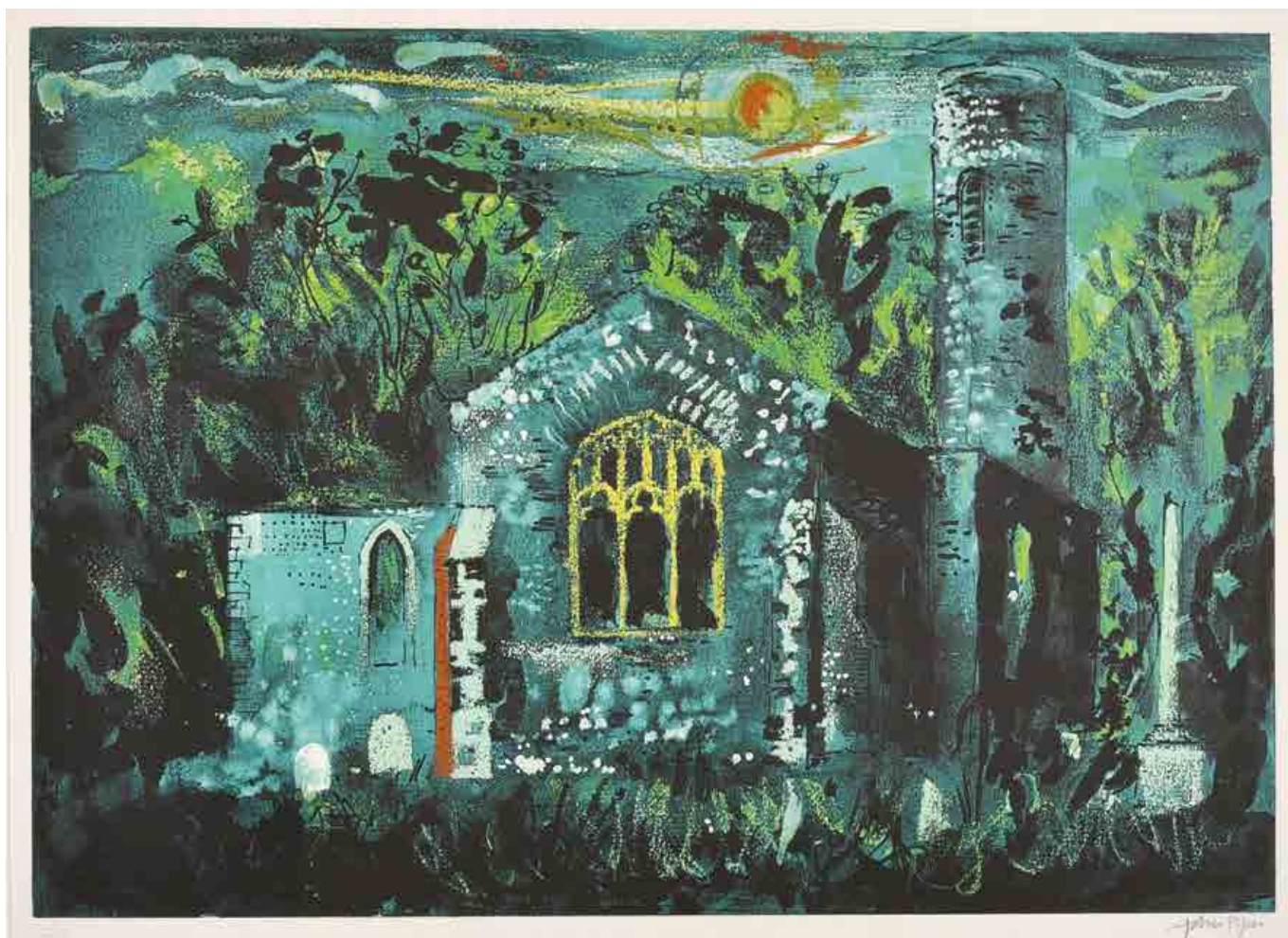


134. **Edgar Holloway (1914-2008) British**  
**"Daisy Monica" (x2)**  
 Etching  
 Unframed 7.75" x 5.6" (19 x 14.3cm)  
 And eight others by the same hand, "The Afghan Hat" (x6),  
 "The Essex Watergate, London, WC2" and "Eastcote" (10)  
 £100-£150



135. **Taylors (20th Century) British**  
**"Aladdin"**  
 Poster  
 Unframed 29" x 19" (73.7 x 49.2cm)  
 Together with twelve other posters (13)  
 £100-£150

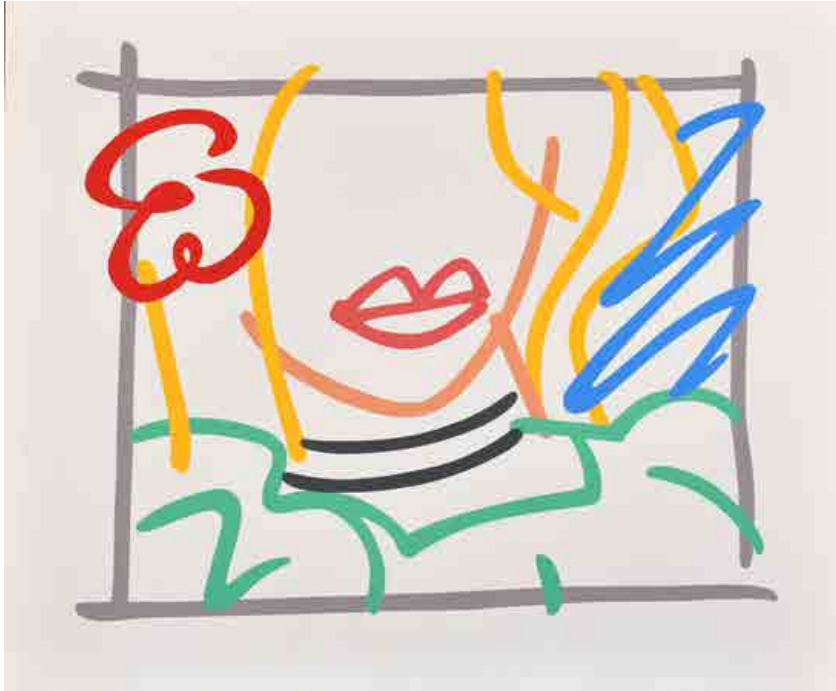




136. John Piper (1903-1992) British  
 "Hautbois Church" (St Theobald's in Norfolk)  
 Screenprint  
 Signed and numbered 2/70 in pencil  
 17.4" x 24.5" (44.2 x 62.2cm)  
 £600-£800



## Tom Wesselmann



137. **Tom Wesselmann (1931-2004) American**  
**"Monica"**  
 Poster  
 Unframed (overall) 30.25" x 37" (76.8 x 94cm)  
 £150-£200



138. **Tom Wesselmann (1931-2004) American**  
**"Bedroom Blond"**  
 Poster  
 Unframed (overall) 20" x 26" (50.8 x 66.1cm)  
 £150-£200

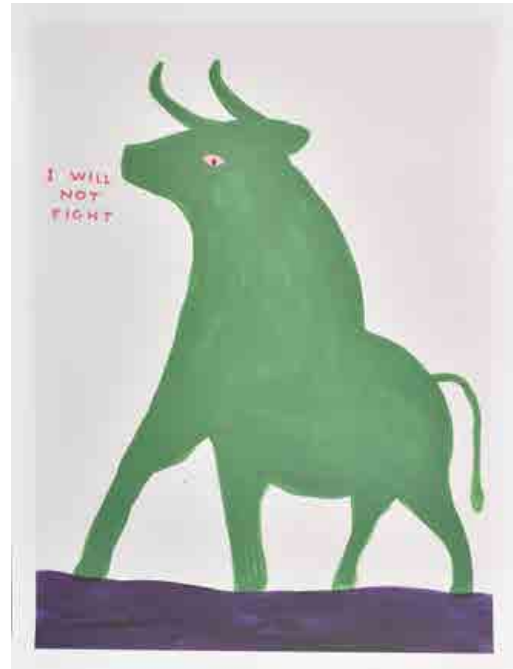


139. **Tom Wesselmann (1931-2004) American**  
**"Reclining Stockinged Nude"**  
 Poster  
 Unframed 23.75" x 39.15" (60.3 x 99.4cm)  
 £300-£400

## David Shrigley



140. David Shrigley (1968-) British  
"HE WILL ONLY EAT SQUID INK PASTA"  
Offset lithograph  
Unframed  
29" x 21.25" (73.6 x 54cm)  
£100-£150



141. David Shrigley (1968-) British  
"I WILL NOT FIGHT"  
Offset lithograph  
Unframed  
29" x 21.25" (73.6 x 54cm)  
£100-£150



142. David Shrigley (1968-) British  
"SOME OF MY BEST FRIENDS ARE PIGS"  
Offset Lithograph  
Unframed  
29" x 21.25" (73.6 x 54cm)  
£100-£150



143. David Shrigley (1968-) British  
"YOU ARE TOO CLOSE - PLEASE MOVE BACK"  
Offset lithograph  
Unframed  
29" x 21.25" (73.6 x 54cm)  
£100-£150



144. Edward Bawden (1903-1989) British  
 "Queen Victoria"  
 Linocut  
 Signed, inscribed and numbered 25/25 in pencil  
 Unframed (overall) 18" x 15" (45.7 x 38.1cm)  
 £100-£200



145. Adolf Frohner (1934-2007) and Peter Gorsen  
 "Korperrituale"  
 Etching  
 Signed and numbered 14/25 in pencil  
 Unframed 11.5" x 7.75" (29.2 x 19.7cm)  
 And four others, a set of five, boxed together with a stocking (5)  
 £100-£150

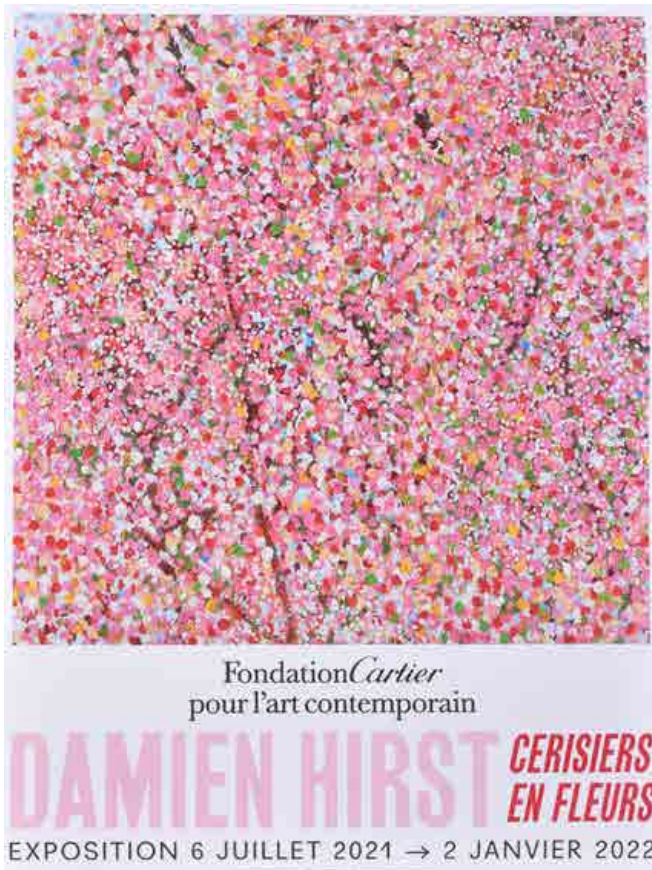


146. Marco Richterich (1929-1997) Swiss  
 "Le Telephone"  
 Drypoint Etching  
 Signed, inscribed, 'A' and numbered 10/15  
 Unframed 4" x 4" (10.1 x 10.1cm)  
 And three others by the same hand 'B', 'C' and 'D', contained in a box (4)  
 "Un Doux Parfum Oriental"  
 Etching  
 Signed and numbered 10/15 in pencil  
 Unframed 4" x 8.25" (10.1 x 21cm)  
 And another by the same hand, contained in a box (2)  
 Marco Richterich (1929-1997) Swiss. "Sophie et Claire, Fifolettes"  
 Etching  
 Signed and numbered V/X and number 1 in pencil  
 Unframed 4" x 4" (10.1 x 10.1cm)  
 Together with the other twelve (full set), contained in a box (13) total (19)  
 £100-£200



# Damien Hirst

147. Damien Hirst (1965-) British  
"Cherry Blossom"  
Poster  
Unframed (overall) 31.25" x 23.6" (79.3 x 60cm)  
£200-£300



148. Damien Hirst (1965-) British  
"Cherry Blossom"  
Poster  
Unframed (overall) 31.25" x 23.6" (79.3 x 60cm)  
£200-£300

## Ronnie Wood



149. **Ronnie Wood (1947-)** British  
"Mick with Harmonica I"  
Screenprint  
Signed, inscribed and numbered 175/190 in pencil  
27.5" x 19.5" (69.8 x 49.5cm)  
£800-£1200

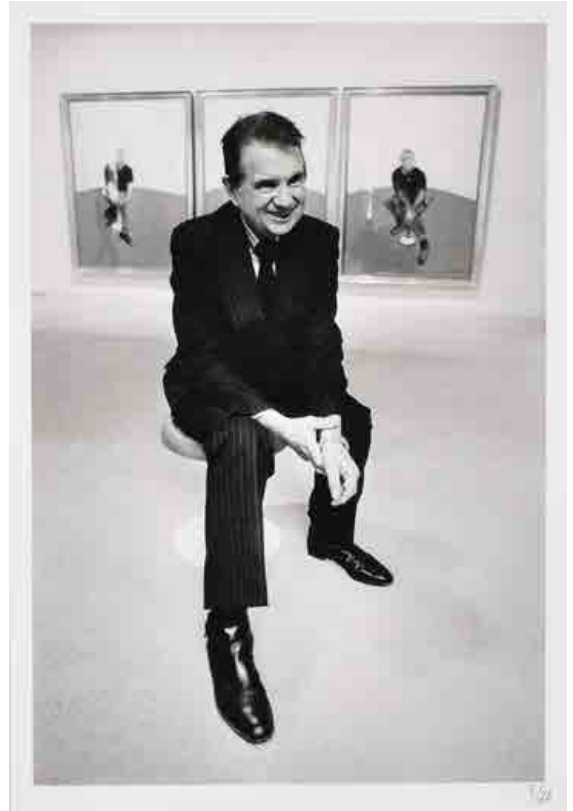


150. **Ronnie Wood (1947-)** British  
"Jim Morrison"  
Screenprint  
Signed, inscribed and numbered 10/250 in pencil  
19.75" x 17" (50.2 x 43.2cm)  
£400-£600

## Mark Ellidge



151. Mark Ellidge (1940-2010) British  
 "Maggie Smith, on set, Room with a View, 1985"  
 Photograph  
 Numbered 2/25, and inscribed on a label verso  
 14.85" x 10" (38 x 25.4cm)  
 Provenance: The artists' family  
 £200-£400



152. Mark Ellidge (1940-2010) British  
 "Francis Bacon, seated and smiling, Paris, 1987"  
 Photograph  
 Numbered 8/20, and inscribed on a label verso  
 14.85" x 10" (38 x 25.4cm)  
 Provenance: The artists' family  
 £200-£400



153. Mark Ellidge (1940-2010) British  
 "David Hockney, in his west London studio, 1980"  
 Photograph  
 Numbered 1/25, and inscribed on a label verso  
 10" x 14.85" (25.4 x 38cm)  
 Provenance: The artist's family  
 £200-£400





154. **Robert W Little (1854-1944) British**  
Cattle in a Meadow  
Watercolour  
Signed  
9.75" x 13.75" (24.7 x 34.8cm)  
**£100-£200**



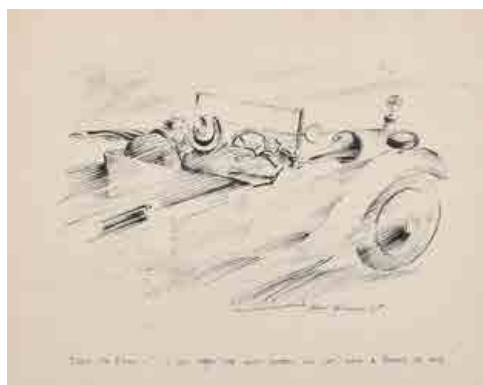
155. **James Cadenhead (1858-1927) British**  
"Deeside Highlands"  
Watercolour  
Signed with monogram, and inscribed on labels verso  
10.5" x 14.25" (26.7 x 36.2cm)  
Exhibited: Royal Scottish Society of Painters in Watercolours  
**£100-£150**



156. **Joseph Alfred Terry (1872-1939) British**  
"Scarborough, Mid-Summer"  
Watercolour  
Inscribed on a label verso  
9.5" x 11.75" (24.2 x 29.8cm)  
Provenance: David Messum Fine Art, The Studio  
**£100-£200**



157. **Joseph Alfred Terry (1872-1939) British**  
"Promenading, Scarborough"  
Watercolour  
Inscribed on a label verso  
9.25" x 11.5" (23.5 x 29.2cm)  
Provenance: David Messum Fine Art, The Studio  
**£100-£200**



158. **Bert Thomas (1883-1966) British**  
"Fresh Air Fiend- 'I say open the wind-screen  
and let's have a breath of air'"  
Ink  
Signed and inscribed  
11.25" x 14" (28.5 x 35.5cm)  
**£100-£150**



159. **Robert Charles Goff (1837-1922) British**  
"Florentine Landscape, 1903"  
Watercolour  
Signed and dated 1903, and inscribed on labels verso  
3.4" x 7" (8.6 x 17.8cm)  
Provenance: Robert Dunthorne, The Rembrandt Head, London; Mrs Y Clarke  
**£100-£150**

160. Edward Horace Thompson (1879-1949) British  
 "Crummock Water & Buttermere"  
 Watercolour  
 Signed, and inscribed verso  
 8.5" x 10.75" (21.6 x 27.2cm)  
 £200-£300



161. Sax Roland Shaw (1916-2000) British  
 "Fife Village"  
 Mixed media  
 Signed, inscribed and dated 47, and inscribed on labels verso  
 11" x 15" (27.9 x 38.1cm)  
 Provenance: The Torrance Gallery, Edinburgh, 1983;  
 Flying Colours Gallery, London  
 £200-£300



162. Edmond Xavier Kapp (1890-1978) British  
 "Ma blond (1952)"  
 Watercolour  
 Signed, and inscribed on labels verso  
 8.5" x 13.5" (21.6 x 34.2cm)  
 Provenance: Ernest Brown & Phillips Ltd, The Leicester Galleries,  
 London, April 1953; E Booth Esq  
 £300-£500





163. 20th Century English School  
Nude Study  
Sanguine  
14.75" x 10.5" (37.5 x 26.7cm)  
Provenance: Mrs Y Clarke  
£100-£150



164. Circle of Gwen John (1876-1939) British  
Portrait of a Girl  
Pastel  
11" x 9.5" (27.9 x 24.7cm)  
£100-£150

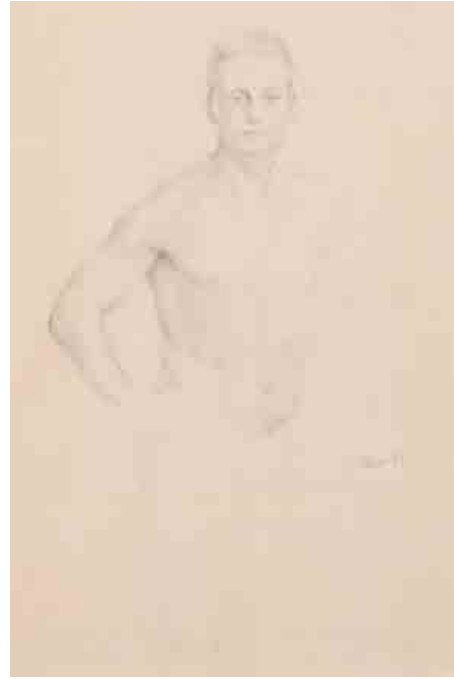


165. Joseph Booth Lee (1901-1975) British  
"London Laughs...Royal Courts of Justice, Learned Counsel's Opinion!"  
Ink  
Signed  
18" x 13.5" (45.7 x 34.2cm), and another by the same hand "Basic"  
14" x 10.25" (35.5 x 26cm) (2)  
Literature: Evening News, 14th February 1936  
£100-£150





166. **Alfred East (1844-1913) British**  
**Figures on a Woodland Path**  
 Pencil  
 Signed, inscribed and dated 12.5.1905, and inscribed on a label verso  
 15" x 11.25" (38.2 x 28.6cm)  
 Provenance: Abbott & Holder, London  
**£100-£150**



167. **Early 20th Century English School**  
**Study of a Male Nude**  
 Pencil  
 Inscribed 'John' and dated '06  
 8.75" x 6" (22.2 x 15.2cm)  
**£100-£150**



168. **Henry Scott Tuke (1858-1929) British**  
**'Study for Basking'**  
 Ink  
 Signed and dated 1885, and inscribed on a label verso  
 5" x 9.25" (12.7 x 23.5cm)  
 Provenance: The Fine Art Society, London. "Catching the Light", 2008  
 Literature: Illustrated in the Pall Mall Extra  
**£600-£800**

# Willi Soukop



169. Willi Soukop  
(1907-1995) Austrian  
Kneeling Figure  
Chalk and crayon  
Signed  
13.5" x 19.25" (34.3 x 48.8cm)  
Provenance: Mrs Y Clarke  
£100-£200



170. Willi Soukop (1907-1995) Austrian  
'Donkey'  
Resin  
2.75" x 2.75" x 1" (7 x 7 x 2.5cm)  
On a wooden base, Overall 4.25" (10.9cm)  
Provenance: Mrs Y Clarke.  
Notes: A finished work at Harlow was Grade II listed in 2016  
£200-£300



171. Willi Soukop (1907-1995) Austrian  
Head of a Lady in a Hat  
Bronze  
4" x 3.4" x 1.75" (10.2 x 8.6 x 4.4cm)  
On a wooden base, Overall height of 6" (15.2cm)  
Provenance: Mrs Y Clarke  
£200-£300

172. **Willi Soukop (1907-1995) Austrian**  
A Pair of Seated Female Nudes  
Bronze  
4.25" x 2.75" x 3" (10.8 x 7 x 7.6cm)  
and 3.5" x 4" x 2.75" (8.8 x 10.2 x 7cm) (2)  
Provenance: Mrs Y Clarke  
£300-£500



173. **Willi Soukop (1907-1995) Austrian**  
A Pair of Plaster Reliefs  
Signed and inscribed verso  
Laid down as one (each) 4.6" x 2" (11.7 x 5.1cm)  
Overall on board 6" x 7.4" (15.2 x 18.8cm)  
Provenance: Mrs Y Clarke  
£100-£200



174. **Willi Soukop (1907-1995) Austrian**  
Standing Figure  
Plaster  
5.5" x 3.25" x 2" (14 x 8.3 x 5.1cm)  
Provenance: Mrs Y Clarke  
£100-£150





175. **Pierre Balmain (1914-1982) French**  
A Set of Three Fashion Designs  
Poster paint and ink  
12" x 8" (30.5 x 20.3cm) (3)  
**£100-£200**



176. **20th Century European School**  
Street Scene  
Crayon  
Signed Tom  
22" x 13" (55.9 x 33cm)  
Provenance: Mrs Y Clarke  
**£100-£150**



177. **20th Century Irish School**  
A Windswept Landscape  
Gouache  
Indistinctly signed  
8.75" x 11" (22.2 x 27.8cm)  
Provenance: Mrs Y Clarke  
**£100-£150**



178. **Patrick Hughes** (1939-) **British**  
Rainbow Pot  
Watercolour  
Signed in pencil  
26" x 20.5" (66.1 x 52.1cm)  
£2000-£3000



179. **David Tindle (1932-) British**  
**An Interior with a Chair**  
 Gouache  
 Inscribed 'To Annie with Love, David'  
 8.25" x 10.75" (21 x 27.3cm)  
**£100-£200**



180. **Michael Kilfoyle (1937-2013) British**  
**"Gas Street Basin, Birmingham"**  
 Watercolour  
 Signed and dated 1985, and inscribed on a label verso  
 7" x 8.75" (17.8 x 22.2cm)  
 Together with five other canal scenes (6)  
**£100-£150**



181. **Jeremy Barlow (20th-21st Century) British**  
**"Venice"**  
 Watercolour  
 Signed, and inscribed on a label verso  
 10" x 13" (25.4 x 33cm)  
**£100-£200**



182. **Early 20th Century Asian School**  
**Boats in an Estuary**  
 Watercolour  
 Indistinctly signed and dated 2000  
 15" x 21" (38.1 x 53.3cm)  
**£100-£200**



183. **G Mats (19th-20th Century) European**  
**"La Plage"**  
 Oil on paper laid down  
 Signed, and inscribed verso  
 Unframed 5.25" x 11.5" (13.3 x 29.2cm)  
**£100-£150**



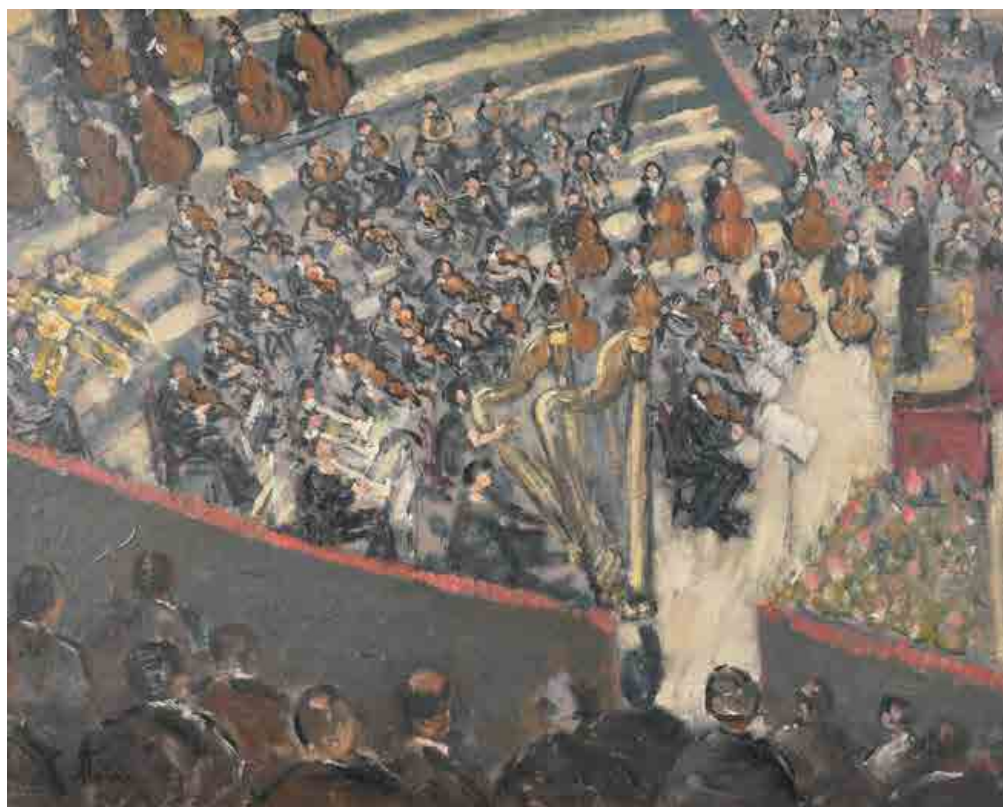
184. **20th Century English School**  
**Portrait of a Lady with a Fan**  
 Oil on canvas  
 19" x 13" (48.2 x 33cm)  
 Provenance: Mrs Y Clarke  
**£100-£150**



## Paul Ayshford Methuen



185. Paul Ayshford Methuen (1886-1974) British  
 "Hotel D'Aligre, Rouen"  
 Watercolour and ink  
 Signed, inscribed and dated 29.10.38  
 14.75" x 10.75" (37.5 x 27.2cm)  
 Provenance: Fieldborne Galleries, London  
 £300-£400



186. Paul Ayshford Methuen  
 (1886-1974) British  
 "BBC Symphony Orchestra at the  
 Royal Albert Hall: Sir Malcolm Sargent  
 Conducting"  
 Oil on board  
 Signed, and inscribed on a label verso  
 16" x 20" (40.6 x 50.8cm)  
 Provenance: Bridget McDonnell Gallery,  
 Armadale  
 £400-£600



187. Early 20th Century English School  
 Portrait of a Seated Lady  
 Oil on canvas  
 Unframed 35" x 23" (88.8 x 58.4cm)  
 £150-£250



188. 20th Century French School  
 Amaryllis  
 Oil on canvas  
 Indistinctly inscribed in pencil verso  
 Unframed 25.5" x 21.25" (64.7 x 54cm)  
 £300-£500



189. **Tom Trythall Rowe (1856-1940) British**  
 "St Peter's Street, Marlow"  
 Oil on board  
 Signed  
 12.5" x 15.75" (31.8 x 40cm)  
 £600-£800



190. **Willem Van Hasselt (1882-1963) Dutch**  
 "Paysage a Locmariaquer"  
 Oil on board  
 Signed, and inscribed on labels verso  
 8.5" x 9.75" (21.6 x 24.7cm)  
 Provenance: Wildenstein & Co Ltd,  
 London, 1952; John Mills Esq, Richmond  
 £800-£1200



## Clifford Hall



191. Clifford Hall (1904-1973) British  
 "Vannes", a street scene  
 Crayon and ink  
 Signed, inscribed and dated 7.9.60  
 9" x 11" (22.8 x 27.9cm)  
 Provenance: Mrs Y Clarke  
 £50-£80



192. Clifford Hall (1904-1973) British  
 "Watching From The Wings"  
 Oil on canvas  
 Signed and dated 45  
 20" x 18" (50.8 x 40.6cm)  
 Provenance: Mrs Y Clarke  
 Notes: Taken from sketches whilst at The Winter Garden Theatre in 1943, possibly of members of the Anglo-Polish Ballet  
 £300-£400



193. Clifford Hall (1904-1973) British  
 "The Square, Isleworth"  
 Oil on canvas  
 Signed and dated 1930  
 26" x 20" (66 x 50.8cm)  
 Provenance: Mrs Y Clarke  
 £300-£400

194. Clifford Hall (1904-1973) British  
 "Two Bathers"  
 Oil on canvas  
 Signed, and inscribed on a label verso  
 30" x 25" (76.2 x 63.5cm)  
 Provenance: Mrs Y Clarke  
 £600-£800



195. Clifford Hall (1904-1973) British  
 "Jean and her Maid", 1967  
 Acrylic on board  
 27.25" x 23.75" (69.3 x 60.3cm)  
 Provenance: Mrs Y Clarke  
 £100-£200



196. **B Majumdar (20th Century) Indian**  
 A Pair of Indian River Scenes  
 Oil on canvas  
 Signed  
 12" x 16" (35.5 x 40.6cm) (2)  
**£200-£400**



197. **George Heiron (1929-2001) British**  
 A Set of Four Aviation Scenes from The Battle of Britain  
 Oil on canvas  
 Signed  
 16" x 20" (40.6 x 50.8cm) (4)  
**£400-£600**





198. **William Rothenstein (1872-1945) British**  
 "A Farm Homestead"  
 Oil on canvas  
 Inscribed on a plaque verso, and on a label verso  
 22" x 40" (55.8 x 101.7cm)  
 Provenance: Mr Smith  
 £800-£1200



199. **Mervyn Goode (1948-) British**  
 "The Blue Umbrella - Peper Harow"  
 Oil on canvas  
 Signed, and signed and inscribed verso  
 20" x 30" (50.8 x 76.2cm)  
 £300-£400

## Jean Fous



200. Jean Fous (1901-1971) French  
A Night Street Scene  
Oil on board  
Signed  
Unframed 16.25" x 13" (41.3 x 33cm)  
£100-£200



201. Jean Fous (1901-1971) French  
"Église St Medard, Paris"  
Oil on canvas  
Signed, and inscribed verso  
Unframed 10.75" x 9" (27.3 x 22.8cm)  
£100-£200



202. Jean Fous (1901-1971) French  
A Street Scene  
Oil on board  
Signed  
Unframed 8.5" x 10.5" (21.6 x 26.7cm)  
Provenance: Galerie Drouant-David, Paris; Mrs H Bogart  
£100-£200



203. Jean Fous (1901-1971) French  
"Le Manege"  
Oil on board  
Signed, and inscribed verso  
Unframed 7.25" x 9.25" (19.1 x 23.5cm)  
£100-£200



204. **Peter Symonds (1964-) British**  
 "Bougainvillea, St Tropez"  
 Oil on canvas  
 Signed, and inscribed on a label verso  
 11" x 8" (27.9 x 20.3cm)  
 Provenance: The Bourne Gallery,  
 Surrey, Cat No.13, December 2003  
**£400-£600**



205. **Peter Symonds (1964-) British**  
 "Gayle, Wensleydale"  
 Oil on canvas  
 Signed, and inscribed on a label verso  
 8" x 11" (20.3 x 27.9cm)  
 Provenance: The Bourne Gallery,  
 Surrey, Cat No.8, December 2003  
**£300-£400**





206. **Konstantin Razumov (1974-) Russian**  
**"Before a Lesson at the Ballet School"**  
 Oil on canvas  
 Signed in Cyrillic, and signed and inscribed in Cyrillic verso  
 13.75" x 10.75" (34.9 x 27.3cm)  
**£1200-£1800**



207. **Konstantin Razumov (1974-) Russian**  
**"Little Girl with Rabbits"**  
 Oil on canvas  
 Signed in Cyrillic, and signed and inscribed in Cyrillic verso  
 8.75" x 10.75" (22.2 x 27.3cm)  
**£600-£800**





208. Piotr Stolerenko (1925-2018) Ukrainian  
 "Guest House Garden, Yalta"  
 Oil on canvas  
 Signed, and signed, inscribed and dated 1997 verso, and inscribed on a label verso  
 31" x 31.75" (78.7 x 80.6cm)  
 Provenance: The Bourne Gallery, Surrey, Cat No.45, November 1999  
 £3000-£4000





209. **Boris Pavlovich Nikolaev (1925-2017) Russian**  
Fields with Wild Grass  
Oil on board  
Signed in Cyrillic and dated '77, and signed,  
inscribed and dated 1977 in Cyrillic verso  
15" x 18.75" (38.2 x 46.7cm)  
**£100-£150**



210. **Circle of George Hann (1900-1979) British**  
Canal Scene  
Oil on board  
17.75" x 22" (45.1 x 55.8cm)  
**£100-£200**



211. **Louis Rosan (1926-) French**  
A River Scene  
Oil on canvas  
Signed  
18" x 21.75" (45.7 x 55.3cm)  
Provenance: Omell Galleries, London  
**£100-£200**



212. **20th Century French School**  
An Extensive Landscape  
Oil on board  
Indistinctly signed  
19.75" x 26.25" (50.2 x 67.3cm)  
**£100-£150**



213. **Christopher Hall (1930-2016) British**  
"The Seven Stars"  
Oil on board  
Signed and dated 2008, and inscribed verso  
9" x 18.5" (22.8 x 47cm)  
**£100-£200**



214. **A. Bruni (20th-21st Century) European**  
An Italianate Coastal Scene  
Oil on canvas  
Signed  
23.5" x 47.25" (59.8 x 120cm)  
**£100-£200**





215. Aneurin Jones (1930-2017) British  
 "Strumble Ploughman"  
 Oil on artist's board  
 Signed with initials and dated 83, and inscribed with title and 'Pembrokeshire sketches' verso  
 6.75" x 17.25" (17.2 x 43.8cm)  
 £200-£300



216. Colin Sealy (1891-1964) British  
 Cornish Harbour Scene  
 Oil on canvas  
 Inscribed verso  
 18" x 24" (45.7 x 61cm)  
 Provenance: Mrs Y Clarke  
 £150-£250



217. Colin Sealy (1891-1964) British  
 Still Life with Head  
 Oil on canvas  
 Signed  
 18" x 24" (45.7 x 61cm)  
 Provenance: Mrs Y Clarke  
 £200-£300



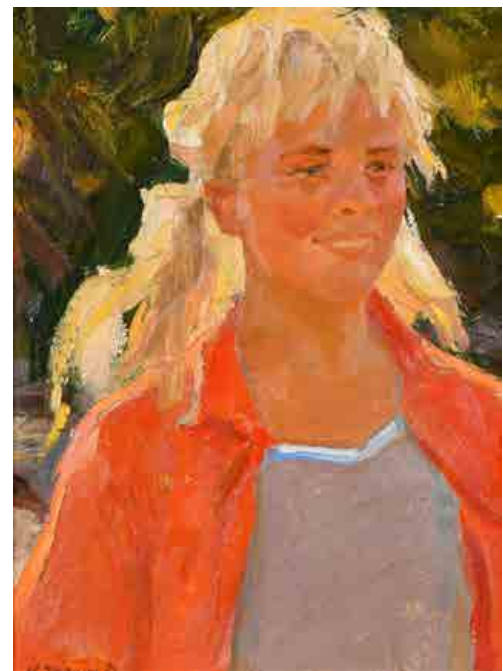
218. Boris Mikhailovich Lavrenko (1920-2001) Russian  
 "Boy with a Basket"  
 Oil on board  
 Signed In Cyrillic and dated 1949, and inscribed in Cyrillic in pencil verso  
 10.5" x 7.75" (26.7 x 19.7cm)  
 £100-£150



219. Fiodor Vassilievitch Savostianov (1924-2012) Russian  
 "Boy in a Winter Hat"  
 Oil on board  
 Signed in Cyrillic and dated '57, and signed, inscribed and dated 1957 in Cyrillic verso  
 10" x 8.25" (25.4 x 20.9cm)  
 £100-£150



220. Edvard Yakovlevich Virzhikovski (1928-2011) Russian  
 "The Rain"  
 Oil on board  
 Signed in Cyrillic and dated '65, and signed and inscribed in Cyrillic verso  
 9.5" x 6.25" (24.2 x 15.8cm)  
 £100-£150



221. Nikolai Petrovich Tchouprina (1928-1986) Russian  
 "Natasha"  
 Oil on board  
 Signed in Cyrillic and dated '67, and signed, inscribed and dated 1967 in pencil verso  
 15.75" x 11.75" (40 x 29.8cm)  
 £100-£150



222. **Konstantin Razumov (1974-) Russian**  
**"In the Bathroom"**  
 Oil on canvas  
 Signed in Cyrillic, and signed and inscribed  
 in Cyrillic verso  
 13.75" x 9.5" (34.9 x 24.1cm)  
**£1500-£2000**



223. **Konstantin Razumov (1974-) Russian**  
**"Awakening"**  
 Oil on canvas  
 Signed in Cyrillic, and signed and inscribed in Cyrillic verso  
 13" x 9.5" (33 x 24.1cm)  
**£1000-£1500**





224. Vladimir Mikhailovich Klenov (1932-2009) Russian  
 "Petia"  
 Oil on board  
 Signed in Cyrillic and dated 1962, and signed, inscribed and dated 1962 in pencil in Cyrillic verso  
 15.75" x 11.75" (40 x 29.8cm)  
 £100-£150



225. 20th Century  
 English School  
 Still Life of Flowers in a Vase  
 Oil on canvas  
 36" x 24" (91.5 x 61cm)  
 £100-£150



226. John Whittall (1947-) British  
 Cat in a London Garden  
 Oil on canvas  
 Signed and dated 82  
 24" x 17" (61 x 43.2cm)  
 Provenance: Mrs Y Clarke  
 £100-£150



227. John Whittall (1947-) British  
 "Danielle Clarke"  
 Oil on canvas  
 Signed and dated '77, and inscribed verso and on a label verso  
 20" x 17" (50.8 x 43.2cm)  
 Exhibited: The Mall Galleries, 1979  
 Together with a portrait of Mr Clarke  
 Oil on canvas  
 Signed  
 Unframed 24" x 18" (61 x 45.7cm) (2)  
 Provenance: Mrs Y Clarke  
 £100-£200



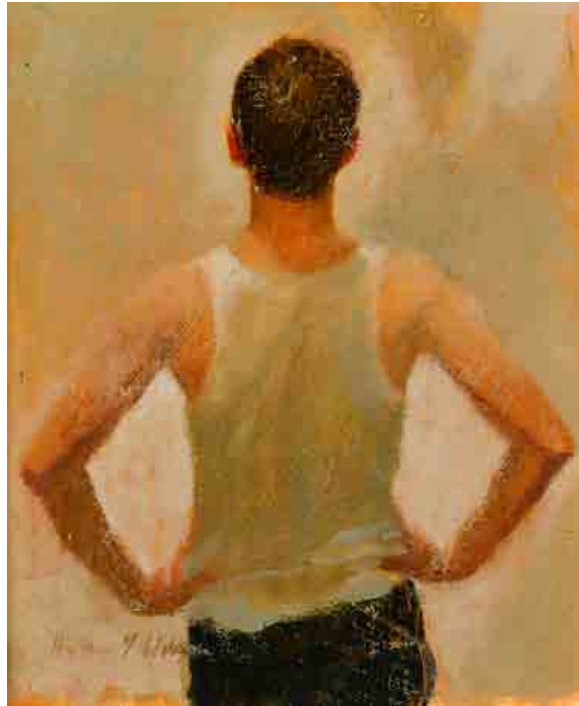
228. Circle of Dorothy Nesbitt (1895-1971) British  
Primroses  
Oil on artist's board  
12.5" x 12.5" (31.7 x 31.7cm)  
£100-£200



229. Olga Lehman (1912-2001) British  
Still Life of Flowers  
Oil on canvas  
Signed  
Unframed 30" x 25" (76.2 x 63.5cm)  
£100-£200



230. Adam Barlow (20th-21st Century) British  
"Garlic Seller, Uzes Market"  
Oil on canvas  
Inscribed verso  
Unframed 30" x 24" (76.2 x 61cm)  
£100-£200

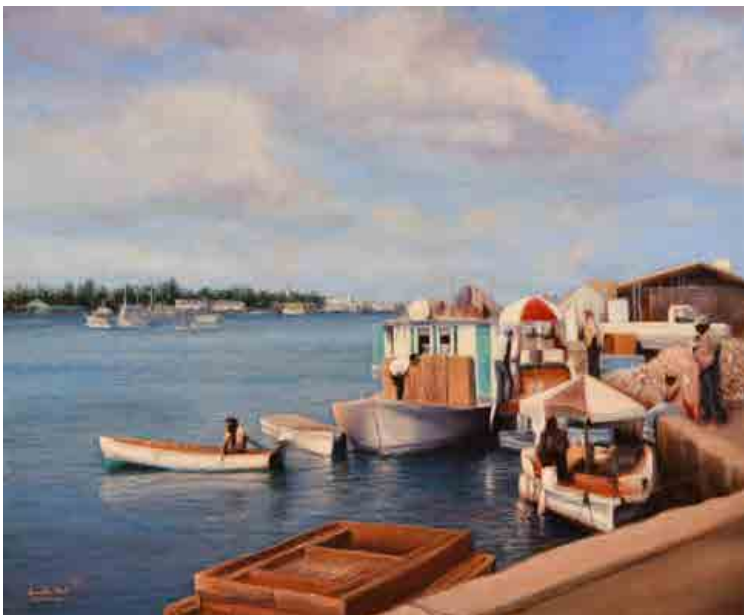


231. Helen Wilson (1954-) British  
"Back"  
Oil on panel  
7.5" x 6.25" (19 x 15.8cm)  
Provenance: Thompson's, London  
£100-£150

232. **Circle of Victor Pasmore**  
**(1908-1998) British**  
 Standing Figure  
 Oil on board  
 Signed with initials V.P., with a portrait  
 verso by another hand  
 24" x 15.75" (61 x 40cm)  
 Provenance: Mrs Y Clarke  
**£100-£150**

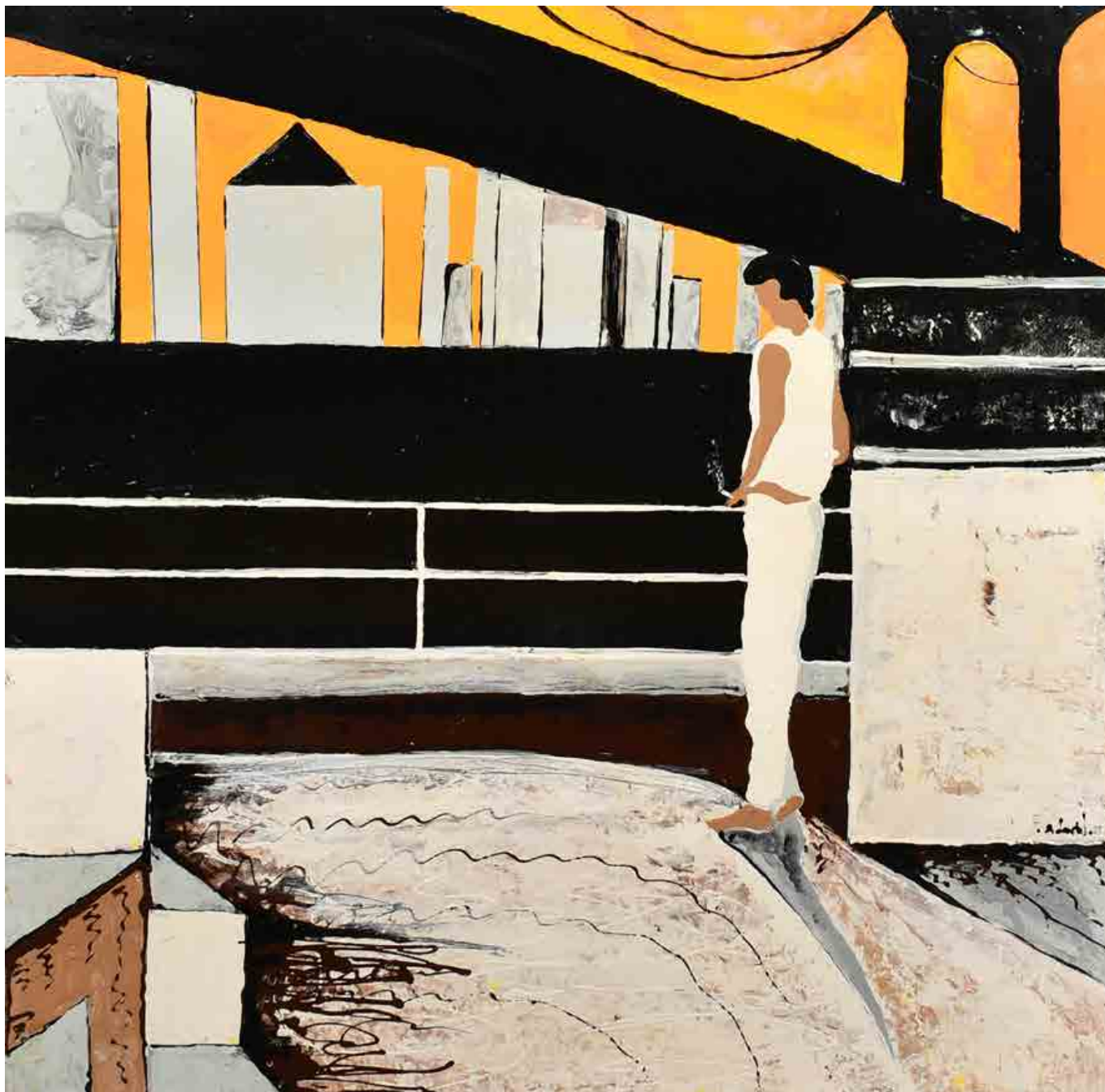


233. **Reginald Victor Brown (1897-1979) British**  
**"Down by Mill, Ludlow"**  
 Oil on board  
 Signed, and inscribed on labels verso  
 16" x 23.5" (40.6 x 59.7cm)  
 Provenance: Mrs Y Clarke  
**£100-£200**



234. **Buster Hall (20th-21st Century) Bahamian**  
**Caribbean Dock Scene**  
 Oil on canvas  
 Signed, inscribed Bahamas and dated 1983  
 20" x 24" (50.8 x 61cm)  
**£100-£200**





235. 20th-21st Century American School  
 'Brooklyn Bridge'  
 Oil on canvas  
 Indistinctly signed  
 Unframed 39.4" x 39.4" (100 x 100cm)  
 £300-£400

## Frames



301. Early 19th Century French School  
An Empire Gilt Composition Frame, rebate 78" x 39.5" (198.2 x 100.3cm)  
£200-£400



**303. 20th Century European School**  
A Carved Giltwood Frame with swept centres and corners, rebate 58" x 34.5"  
(147.3 x 87.6cm)  
£150-£250



**302. 20th Century English School**  
A Painted Frame, with gilt edging, rebate 60" x 40" (152.4 x 101.6cm)  
£80-£120



**304. 19th Century English School**  
A Gilt Composition Frame, with a rope design and shell corners, rebate 54" x 31.5"  
(137.2 x 80cm)  
£200-£300





305. Early 19th Century English School  
A Partially Carved Giltwood Frame, with swept centres and corners,  
rebate 51.5" x 38.5" (130.8 x 97.8cm)  
£200-£400



306. Late 19th Century English School  
A Carved Giltwood Frame with swept centres and corners,  
rebate 47.5" x 21.5" (120.7 x 54.6cm)  
£100-£150



307. 20th Century European School  
A Gilt Composition Frame with swept and pierced centres and corners,  
rebate 46" x 36" (116.8 x 91.5cm)  
£100-£150



308. Late 19th Century English School  
A Stripped Carved Wood Frame, rebate 45" x 29" (114.3 x 73.7cm)  
£100-£150



309. 19th Century English School  
A Maple Frame with a gilt slip, rebate 45" x 25.25" (114.2 x 64.2cm)  
£60-£80



310. 20th Century English School  
A Gilt and Painted Composition Frame, rebate 44.5" x 35.5"  
(113 x 90.2cm)  
£100-£200



311. 19th Century European School  
A Carved Giltwood Frame, with central glass panel, rebate 43" x 32.5"  
(109.2 x 82.5cm)  
£150-£200



312. 19th Century English School  
A Gilt Composition Frame with swept centres and corners,  
rebate 42.5" x 24.5" (108 x 62.2cm)  
£80-£120



313. 20th Century English School  
A Gilt Composition Frame, rebate 42.5" x 22.5" (107.9 x 57.2cm)  
£40-£60



314. 20th Century European School  
A Gilt Composition Frame with swept corners and a painted slip,  
rebate 40" x 29.5" (101.6 x 74.9cm)  
£40-£60



**315. Late 19th Century European School**  
A Louis Style Gilt Composition Frame with swept centres and corners,  
rebate 38.75" x 26.5" (98.4 x 67.3cm)  
**£100-£150**



**316. 19th Century English School**  
A Gilt Composition Frame, rebate 38.5" x 26.5" (97.8 x 67.3cm)  
**£40-£60**



**317. 20th Century English School**  
A Gilt Composition Frame with swept and pierced centres and corners,  
rebate 38.5" x 24" (97.8 x 61cm)  
**£50-£80**



**318. 19th Century English School**  
A Maple Frame, with a gilt slip, rebate 38" x 27.5" (96.5 x 69.8cm)  
**£60-£80**

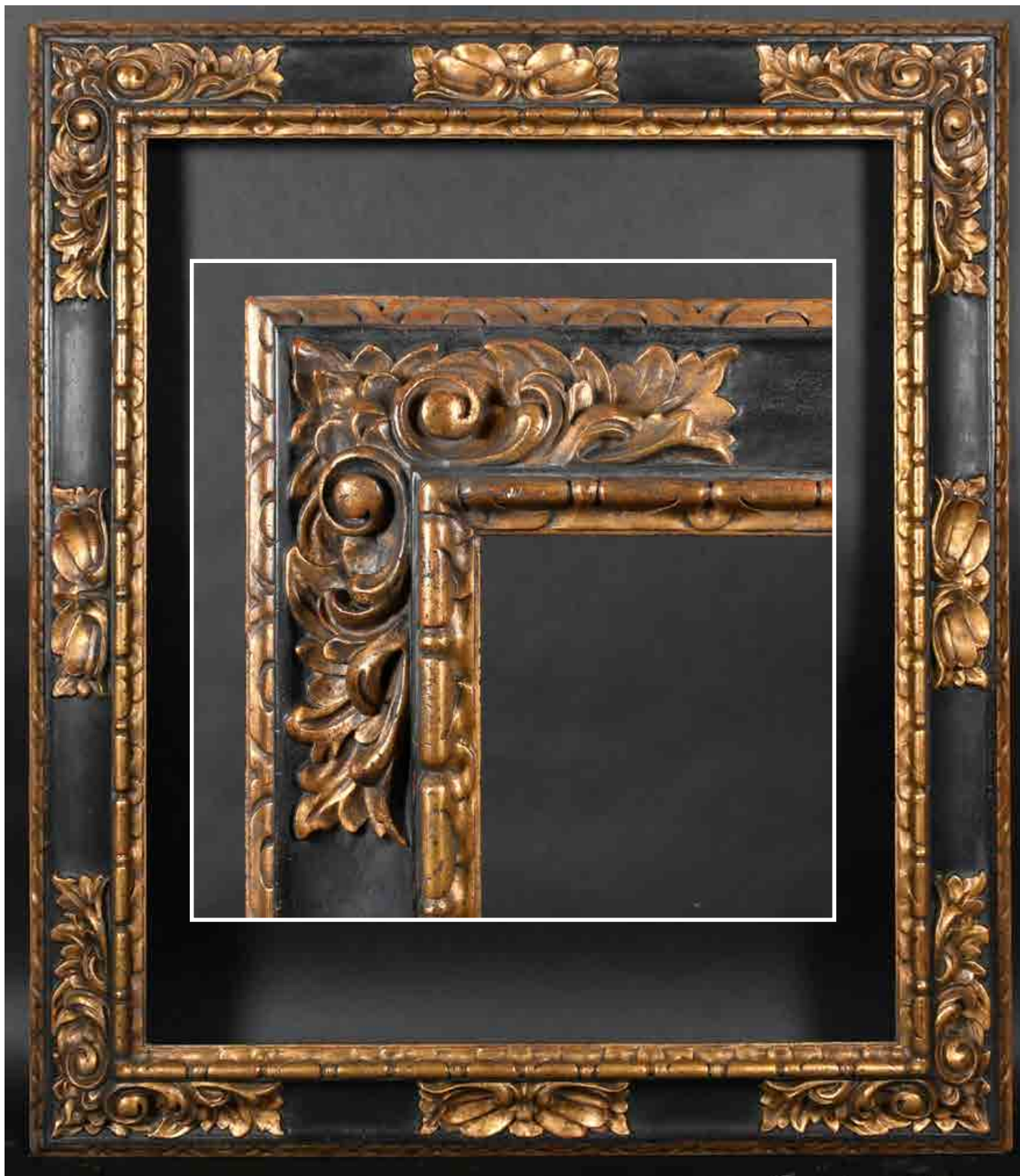


**319. 20th Century English School**  
A Louis Style Gilt Composition Frame with swept centres and corners,  
rebate 37.5" x 28" (95.3 x 71.1cm)  
**£60-£80**



**320. 20th Century English School**  
A Louis Style Gilt Composition Frame with swept centres and  
corners, rebate 37" x 32" (94 x 81.3cm)  
**£60-£80**





321. 20th Century European School  
A Carved Giltwood and Painted Frame, rebate 36.5" x 30.25" (92.7 x 76.8cm)  
£800-£1200



322. 19th Century English School  
A Gilt Composition Frame, rebate 36" x 32" (91.5 x 81.3cm)  
£100-£200



323. 19th Century English School  
A Gilt Composition Frame with Lily panels, rebate 36" x 28"  
(91.5 x 71.1cm)  
£150-£250



324. 20th Century European School  
A Painted Composition Frame, rebate 36" x 28" (91.5 x 71.1cm)  
£40-£60



325. 20th Century English School  
A Gilt Composition Frame with swept and pierced centres and corners,  
rebate 35.75" x 28" (90.8 x 71.1cm)  
£60-£80

326. 18th Century French School  
A Louis Carved Giltwood Frame  
with swept centres and corners,  
rebate 34" x 19" (86.3 x 48.2cm)  
£200-£300



327. 19th Century English School  
A Painted Composition Frame, rebate 33" x 29.25" (83.8 x 74.3cm)  
£40-£60



328. Early 20th Century European School  
A Painted Composition Frame, rebate 32" x 27" (81.2 x 68.6cm)  
£40-£60



329. 20th Century European School  
A Wooden Frame, with gilt inner and outer edging, rebate 31.25" x 20.5"  
(79.4 x 52.1cm)  
£40-£60



330. 20th Century English School  
A Painted Frame, with gilt edging and inset glass,  
rebate 30.75" x 22.25" (78.1 x 56.5cm)  
£50-£80





331. Late 18th Century English School  
A Gilt and Painted Carved Wood Frame, rebate 30" x 25"  
(76.2 x 63.5cm)  
£150-£250



332. Late 18th Century English School  
A Carved Giltwood Frame, with swept and  
pierced centres and corners, rebate 30" x 25"  
(76.2 x 63.5cm)  
£800-£1200



333. Early 19th Century English School  
A Gilt and Painted Composition Frame, rebate 30" x 25" (76.2 x 63.5cm)  
£50-£80



334. 19th Century English School  
A Painted Composition Frame, rebate 30" x 25" (76.2 x 63.5cm)  
£40-£60



335. Early 20th Century English School  
A Silver Composition Frame, rebate 30" x 22" (76.2 x 55.8cm)  
£80-£120



336. 20th Century European School  
A Gilt Composition Frame with swept and pierced corners, rebate 30" x 20" (76.2 x 50.8cm)  
£50-£80



337. 20th Century English School  
A Gilt Composition Frame with swept and pierced centres and corners, rebate 30" x 18" (76.2 x 45.7cm)  
£50-£70



338. 19th Century English School  
A Carved Wooden Frame, rebate 29.75" x 24.75" (75.5 x 62.8cm)  
£40-£60



**339. Early 20th Century English School**  
A Wooden Frame, with a silver slip, rebate 29.5" x 22.5" (74.9 x 56.5cm)  
and another similar, rebate 30.5" x 22.25" (76.8 x 56.5cm) (2)  
£80-£120



**340. Early 19th Century English School**  
A Partially Carved Painted Frame, rebate 29.5" x 21.25"  
(74.9 x 54cm)  
£40-£60



**341. 20th Century English School**  
A Gilt Composition Frame with swept and pierced centres and corners,  
rebate 29" x 25" (73.7 x 63.5cm)  
£50-£80



**342. 19th Century English School**  
A Darkwood Frame with a gilt slip and inset glass, rebate 29" x 21.5"  
(73.7 x 54.6cm)  
£40-£60



**343. 20th Century English School**  
A Painted Composition Frame, rebate 28.5" x 24.5" (72.4 x 62.2cm)  
£50-£80



**344. 19th Century English School**  
A Gilt Composition Frame, rebate 28.25" x 20" (71.7 x 50.8cm)  
£50-£80





345. 20th Century French School  
A Gilt Composition Frame, rebate 28" x 22.5" (71.1 x 57.1cm)  
£30-£40



346. 19th Century European School  
A Black Wooden Frame, rebate 27" x 22.5" (68.6 x 57.2cm)  
£80-£120



347. 19th Century English School  
A Painted Composition Frame, with swept corners, rebate 27" x 19.5"  
(68.6 x 49.5cm)  
£40-£60



348. 20th Century European School  
A Painted Composition Frame, rebate 27" x 17.75" (68.6 x 45.1cm)  
£50-£80



349. 20th Century European School  
A Carved Wood Frame, rebate 26.75" x 21.5" (67.9 x 54.6cm)  
£50-£80



350. 19th Century English School  
A Gilt Composition Frame, rebate 26.75" x 14.5" (67.9 x 36.8cm)  
£40-£60



**351. 19th Century English School**  
A Darkwood Frame with a gilt slip, rebate 26.5" x 22.5" (67.3 x 57.2cm)  
£50-£80



**352. 20th Century English School**  
A Gilt Composition Frame with inset glass, rebate 26.25" x 18.25"  
(66.7 x 46.4cm)  
£40-£60



**353. Late 19th Century English School**  
A Painted Watts Style Composition Frame, rebate 26" x 22" (66 x 55.8cm)  
£40-£60



**354. 20th Century European School**  
A Gilt Composition Frame with swept and pierced corners, rebate 26" x 17.5" (66 x 44.4cm)  
£40-£60

355. 20th-21st Century English School  
A Silver Composition Frame,  
with a black side edge, rebate 25" x 21"  
(63.5 x 53.3cm)  
£80-£120



356. 20th-21st Century English School  
A Black Ripple Frame, rebate 25" x 21" (63.5 x 53.3cm)  
£100-£200





**357. 20th-21st Century English School**  
A Silver Composition Frame, with a black side edge, rebate 25" x 19"  
(63.5 x 48.2cm)  
£80-£120



**358. 19th Century English School**  
A Darkwood Frame with gilt inner and outer edges,  
rebate 25" x 17.5" (63.5 x 44.4cm)  
£40-£60



**359. Early 20th Century English School**  
A Gilt Composition Frame, with inset glass, rebate 24.75" x 16.5"  
(62.8 x 41.9cm)  
£60-£80



**360. Early 19th Century English School**  
A Gilt Composition and Ripple Frame, rebate 24" x 20"  
(61 x 50.8cm)  
£80-£120



**361. 19th Century English School**  
A Gilt Composition Frame, rebate 24" x 18.75" (61 x 47.6cm)  
£30-£50



**362. 19th Century English School**  
A Gilt Composition Frame with swept and pierced centres and  
corners, rebate 24" x 18" (61 x 45.7cm)  
£80-£120



363. 20th Century Dutch School  
A Pair of Wooden Frames, rebate 24" x 17" (61 x 43.2cm) (2)  
£80-£120



364. 19th Century European School  
A Painted Composition Frame, rebate 24" x 16.75" (61 x 42.5cm)  
£30-£40



365. 20th-21st Century English School  
A Silver Composition Frame, with black outer edging,  
rebate 23.75" x 19.75" (60.3 x 50.1cm)  
£40-£60



366. 20th-21st Century English School  
A Silver Composition Frame, rebate 23.75" x 19" (60.3 x 48.2cm)  
£100-£200



**367. 19th Century European School**  
A Gilt Composition Frame, rebate 23.75" x 17.75" (60.3 x 45.1cm)  
£50-£80



**368. 20th Century English School**  
A Painted and Wooden Frame, with inset glass, rebate 23.75" x 12" (60.3 x 30.5cm), and another four wooden frames (5)  
£20-£40



**369. 20th-21st Century English School**  
A Silver Composition Frame, with black outer edging, rebate 23.25" x 19.75" (59.1 x 50.1cm)  
£70-£100



**370. 20th Century English School**  
A Painted Composition Frame, with swept and pierced centres and corners and a fabric slip, rebate 23" x 18" (58.4 x 45.7cm) without slip rebate 24.25" x 19.25" (61.6 x 48.8cm)  
£30-£40



**371. 20th-21st Century English School**  
A Silver Composition Frame, rebate 23" x 17" (58.4 x 43.2cm)  
£60-£80



**372. 20th-21st Century English School**  
A Gilt Composition Frame, rebate 22.75" x 19.75" (57.7 x 50.2cm)  
£60-£80





**373. 19th Century English School**  
A Maple Frame with a gilt slip, rebate 22.75" x 18.5" (57.8 x 47cm)  
**£50-£80**



**374. 19th Century English School**  
A Darkwood Frame, with a gilt slip, rebate 22.75" x 17.25" (57.8 x 43.8cm) and two others of various sizes (3)  
**£40-£60**



**375. 20th Century English School**  
A Painted Composition Frame, with swept centres and corners, rebate 22.75" x 17" (57.8 x 43.2cm)  
**£30-£40**



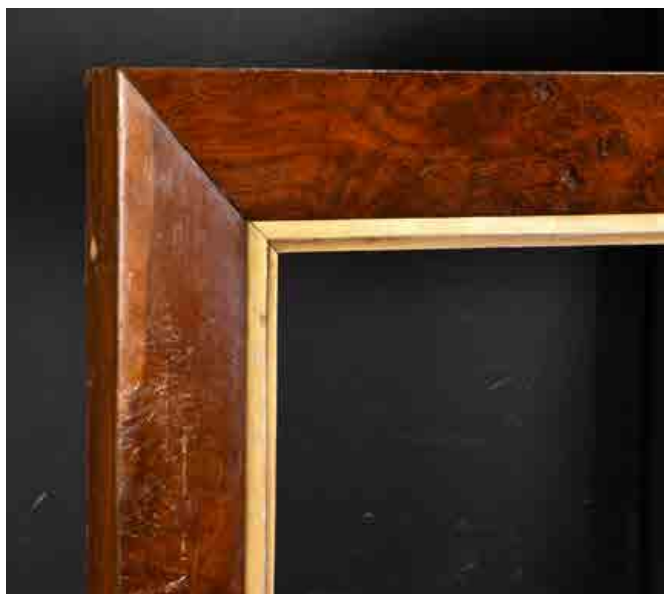
**376. Early 19th Century English School**  
A Rippled Composition Frame, rebate 22.75" x 16.25" (57.8 x 41.2cm)  
**£40-£60**



**377. 20th Century English School**  
A Darkwood Frame, with gilt slip, rebate 22.25" x 17.5" (56.5 x 44.4cm)  
£40-£60



**378. 19th Century English School**  
A Maple Frame, with a gilt slip, rebate 22" x 20" (55.9 x 50.8cm) and five others similar (6)  
£100-£200



**379. 19th Century English School**  
A Maple Frame with a gilt slip, rebate 22" x 16" (55.8 x 40.6cm)  
£40-£60



**380. 20th Century French School**  
A Louis Style Gilt Composition Frame, with swept centres and corners and a fabric slip, rebate 21.75" x 18.25" (55.3 x 46.3cm) without slip, rebate 24" x 20.5" (61 x 52.1cm)  
£100-£200



**381. 20th Century French School**  
A Painted Carved Wood Frame, with swept centres and corners, and a fabric slip, rebate 21.75" x 18" (55.3 x 45.7cm)  
£50-£80



**382. Early 19th Century English School**  
A Gilt Composition Frame, with swept corners, rebate 21.75" x 16" (55.3 x 40.6cm)  
£40-£60



**383. 20th Century French School**  
A Painted Composition Frame, rebate 21.5" x 18" (54.6 x 45.7cm)  
£80-£120



**384. 20th-21st Century English School**  
A Black Painted Frame, with gilt inner and outer edging, rebate 21.5" x 18" (54.6 x 45.7cm)  
£70-£100



**385. 20th-21st Century English School**  
A Black Painted Frame, with silver inner and outer edging, rebate 21.5" x 18" (54.6 x 45.7cm)  
£80-£120



**386. 19th Century English School**  
A Gilt Composition Frame, with inset glass, rebate 21" x 17" (53.3 x 43.2cm)  
£40-£60





**387. 19th Century English School**  
A Maple Frame with a gilt slip, rebate 20.5" x 16.5" (52.1 x 41.9cm)  
£40-£60



**388. 20th-21st Century English School**  
A Silver Composition Frame, with black outer edging, rebate 20.5" x 16.5" (52.1 x 41.9cm)  
£50-£80



**389. 19th Century English School**  
A Gilt Composition Frame, rebate 20.5" x 15.5" (52 x 39.4cm)  
£40-£60



**390. 19th Century English School**  
A Gilt Composition Frame, with a black outer edge and inset glass, rebate 20.5" x 14.5" (52.1 x 36.8cm)  
£40-£60



391. Early 19th Century English School  
A Darkwood Frame, with a gilt slip, rebate 20" x 18.25" (50.8 x 46.3cm)  
£40-£60



392. 19th Century English School  
A Gilt and Painted Composition Frame, with swept and pierced centres and corners, rebate 19.75" x 16.75" (50.2 x 42.5cm)  
£30-£40



393. 20th Century English School  
A Carved Wooden Frame, with a gilt slip, rebate 19.75" x 15.75" (50.1 x 40cm)  
£40-£60



394. 19th Century English School  
A Maple Frame, with a gilt slip, rebate 19.5" x 16" (49.5 x 40.6cm)  
£40-£60



395. 20th-21st Century English School  
A Black Painted Frame, with silver edging,  
rebate 19.5" x 15.5" (49.5 x 39.3cm)  
£100-£200



396. Early 19th Century English School  
A Carved Giltwood Frame,  
rebate 19.25" x 16.75" (48.8 x 42.5cm)  
£100-£200





397. Early 19th Century English School  
A Painted Composition Frame, rebate 19.25" x 16.25" (48.8 x 41.3cm)  
£40-£60



398. Early 19th Century English School  
A Pair of Wooden Frames, with black slips, rebate 19" x 15.75"  
(48.2 x 40cm) (2)  
£50-£80



399. 19th Century English School  
A Gilt Composition Frame, with inset glass, rebate 18.75" x 13"  
(47.6 x 33cm)  
£30-£40



400. 20th Century French School  
A Painted Carved Wood Frame, rebate 18.25" x 15" (46.3 x 38.1cm)  
£80-£120



401. 20th Century English School  
A Wooden Frame, with a silver slip, rebate 18.25" x 13.25" (46.3 x 33.7cm)  
£40-£60



402. 19th Century English School  
A Maple Frame with a gilt slip, rebate 18" x 16" (45.7 x 40.6cm)  
and two others similar, rebate 22.25" x 16" (56.5 x 40.6cm) and  
19.5" x 11.5" (49.5 x 29.2cm) (3)  
£60-£80



403. 19th Century English School  
A Painted Composition Frame, rebate 18" x 15" (45.7 x 38.1cm) and another composition frame, rebate 17" x 14" (43.2 x 35.5cm) (2)  
£40-£60



404. 19th Century English School  
A Near Pair of Darkwood Frames, with gilt slips, rebate 18" x 14" (45.7 x 35.5cm) (2)  
£60-£80



405. 19th Century English School  
A Maple Frame, with a gilt slip, rebate 17.5" x 14.25" (44.4 x 36.2cm) and another maple frame of another size (2)  
£40-£60



406. Early 19th Century English School  
A Painted Composition Frame, rebate 17.5" x 13.5" (44.4 x 34.3cm) and another similar 15.75" x 12" (40 x 30.5cm) (2)  
£60-£80



407. 20th-21st Century English School  
A Black Painted Frame, with silver inner and outer edges, rebate 17" x 13" (43.2 x 33cm)  
£80-£120



408. 20th Century English School  
A Wooden Frame, with a gilt slip, rebate 17" x 10" (43.2 x 25.4cm)  
£40-£60



**409. Early 19th Century English School**  
A Gilt Composition Frame, rebate 16.75" x 13.25" (42.6 x 33.7cm) and another similar, rebate 12.75" x 10.75" (32.4 x 27.3cm) (2)  
**£80-£120**



**410. 19th Century English School**  
A Maple Frame, with a gilt slip, rebate 16.75" x 11.75" (42.5 x 29.8cm)  
**£50-£80**



**411. Late 18th Century English School**  
A Cushioned Darkwood Frame, with a gilt slip, rebate 16.5" x 12.5" (41.9 x 31.7cm)  
**£40-£60**



**412. 19th Century English School**  
An Inlaid Wooden Frame, with a gilt inner edge, rebate 16.5" x 12.25" (41.9 x 31.1cm) and another similar, rebate 15.5" x 11.5" (39.3 x 29.2cm) (2)  
**£40-£60**





413. 19th Century English School  
A Pair of Gilt Composition Frames with inset mount and glass,  
rebate 16" x 13.5" (40.6 x 34.3cm) (2)  
£30-£50



414. Early 19th Century English School, A Pair of Painted  
Composition Frames, rebate 16" x 12" (40.6 x 30.5cm) (2)  
£60-£80



415. 19th Century English School  
A Gilt and Painted Composition Frame, rebate 15.75" x 10.75"  
(40 x 27.3cm)  
£40-£60



416. 19th Century English School  
A Maple Frame with a gilt slip, rebate 15.5" x 11.75" (39.4 x 29.8cm)  
together with a wooden frame, rebate 14.25" x 11.25" (36.2 x  
28.5cm) (2)  
£40-£60



417. 20th Century English School  
A Gilt Composition Frame, rebate 15.5" x 10.25" (39.4 x 26cm)  
£40-£60



418. 19th Century English School  
A Pair of Maple Frames, with gilt slips, rebate 15.25" x 10.75"  
(38.7 x 27.3cm) (2)  
£50-£80

419. 20th Century French School  
A Pair of Painted Carved Wood Frames,  
rebate 15" x 11.25" (38.1 x 28.6cm) (2)  
£200-£300



420. 20th Century French School  
A Painted Carved Wood Frame, rebate 14.75" x 11.25" (37.4 x 28.6cm)  
£50-£80



421. Early 20th Century English School  
A Gilt and Painted Composition Frame, rebate 14.5" x 10.25"  
(36.8 x 26cm)  
£50-£80



**422. 19th Century English School**

A Pair of Maple Frames, with silver slips, rebate 14.5" x 9.5" (36.8 x 24.2cm) and another maple frame of another size (3)  
£60-£80



**423. Late 18th Century English School**

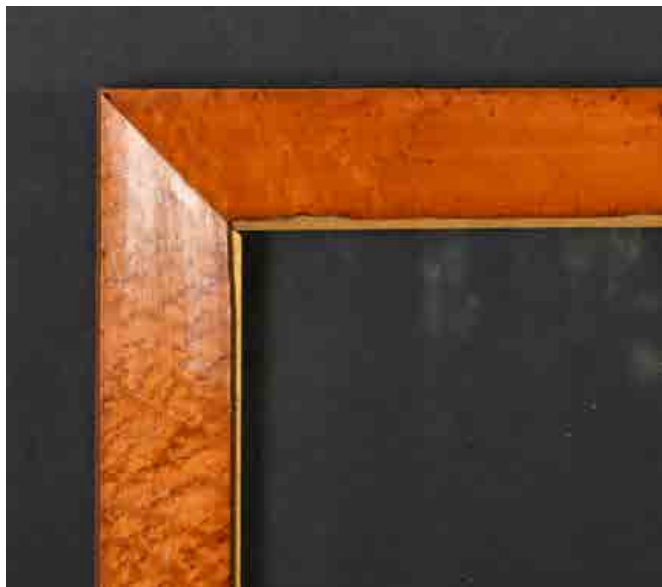
A Darkwood Frame, with a gilt inner edge, rebate 14.25" x 10.5" (36.2 x 26.7cm) and three others similar (varying sizes) (4)  
£80-£120



**424. 20th Century English School**

A Gilt Composition Frame, with swept corners and inset mount and glass, rebate 14" x 10.75" (35.5 x 27.3cm)  
£30-£50





**425. 19th Century English School**

A Maple Frame, with a gilt slip and inset glass, rebate 14" x 10" (35.5 x 25.4cm)

£30-£40



**426. 19th Century English School**

A Watts Style Gilt Composition Frame, rebate 14" x 10" (35.5 x 25.4cm) and another similar, rebate 8.25" x 5.5" (20.9 x 14cm) (2)

£60-£80



**427. 19th Century English School**

A Painted Composition Frame, with swept corners, rebate 13.25" x 10.5" (33.6 x 26.7cm) and another similar, rebate 10" x 8" (25.4 x 20.3cm) (2)

£40-£60



**428. 19th Century English School**

A Set of five Gilt and Painted Composition Frames, rebate 13" x 10.25" (33 x 26cm) and two larger frames, (7)

£80-£120



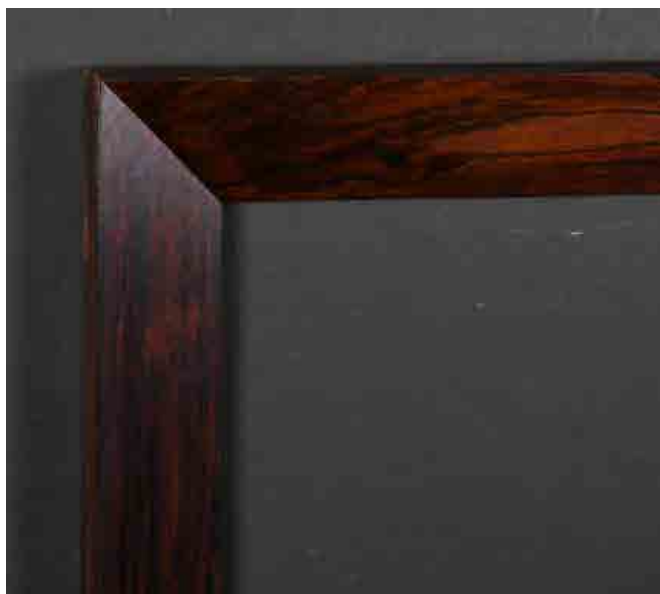
**429. 20th-21st Century English School**  
A Black Painted Frame, with gilt inner and outer edges, rebate 13" x 9"  
(33 x 22.8cm)  
**£60-£80**



**430. 20th-21st Century English School**  
A Pair of Black Painted Frames, with gilt inner edges, rebate 12.75" x 11"  
(32.4 x 28cm) (2)  
**£80-£120**



**431. 20th-21st Century English School**  
A Pair of Black Painted Frames, with gilt inner and outer edges,  
rebate 12.25" x 10.25" (31.1 x 26cm) (2)  
**£80-£120**



**432. 19th Century English School**  
A Darkwood Frame, rebate 12.25" x 9.5" (31.1 x 24.1cm) and two other  
frames, rebate 17" x 15" (43.2 x 38.1cm) and 14.5" x 11.5"  
(36.8 x 29.2cm) (3)  
**£60-£80**



433. 20th Century European School  
A Gilt Composition Frame, rebate 12.25" x 9.25" (31.1 x 23.5cm)  
£50-£80



434. 20th Century European School  
A Painted Composition Frame, rebate 12" x 10.5" (30.5 x 26.7cm)  
£40-£60



435. Late 19th Century English School  
A Gilt Composition Frame, rebate 12" x 9.5" (30.5 x 24.2cm)  
£30-£50



436. 20th Century English School  
A Pair of Black Painted Frames, with gilt inner edges, rebate 11" x 9.75" (27.9 x 24.8cm) (2)  
£70-£100





437. 19th Century English School  
A Painted Composition Frame, rebate 11" x 9" (27.9 x 22.8cm)  
£30-£40



438. 19th Century English School  
A Darkwood Frame, with a painted slip and inset glass, rebate 10.5" x 8.25"  
(26.7 x 20.9cm) and another similar, rebate 11.25" x 8.75" (28.5 x 22.2cm) (2)  
£30-£40



439. 19th Century English School  
An Inlaid Wooden Frame, rebate 10.5" x 8" (26.7 x 20.3cm)  
£30-£50



440. 19th Century English School  
A Maple Frame, rebate 10.25" x 8.25" (26 x 20.9cm)  
£30-£50



441. 20th-21st Century English School  
A Black Painted Frame, with silver inner and outer edges,  
rebate 10.25" x 8.25" (26 x 21cm)  
£60-£80



442. 20th Century English School  
A Gilt Composition Frame, rebate 10" x 8.25" (25.4 x 20.9cm)  
£40-£60



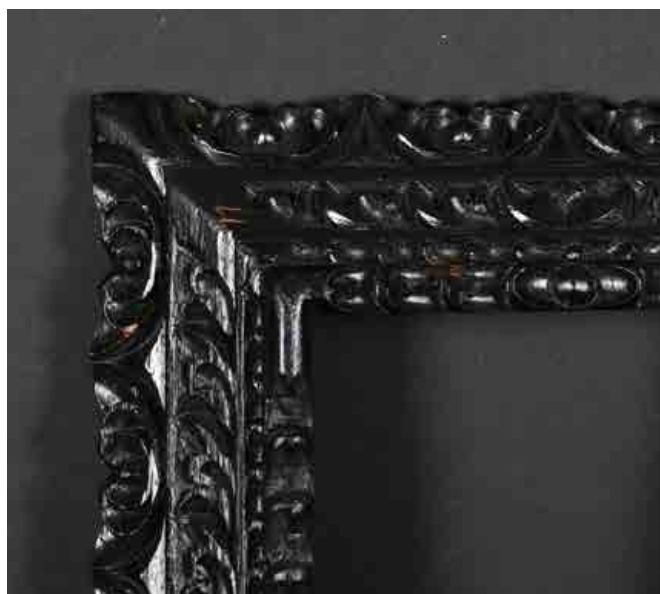
443. 19th Century English School  
A Maple Frame, with a gilt slip, rebate 10" x 8" (25.4 x 20.3cm) and  
another maple frame, rebate 10.5" x 8.75" (26.7 x 22.2cm) (2)  
£40-£60



444. 19th Century European School  
A Black and Simulated Tortoiseshell Frame,  
rebate 9.5" x 7" (24.2 x 17.8cm)  
£200-£300



445. 19th Century English School  
A Maple Frame, with a gilt slip, rebate 9.5" x 6.75" (24.1 x 17.1cm),  
and another similar, rebate 8.75" x 6.75" (22.2 x 17.1cm) (2)  
£40-£60



446. 20th Century Eastern School  
A Black Carved Wood Frame, rebate 9" x 6.5" (22.8 x 16.5cm)  
£30-£50





448. 19th Century English School  
A Cushioned Maple Frame, with a gilt slip, rebate 7.25" x 5.5" (18.4 x 14cm)  
£30-£50



447. Early 19th Century English School  
A Hollow Gilt Composition Frame, rebate 8.75" x 7.25" (22.2 x 18.4cm)  
and another similar, rebate 8.5" x 7.5" (21.6 x 19cm) (2)  
£60-£80



449. Early 19th Century English School  
A Gilt Composition Frame with swept corners,  
rebate 5.5" x 4.5" (14 x 11.4cm)  
£30-£50



450. 20th Century English School  
A Collection of Thirty Eight Picture Lights of various sizes (untested) (38)  
£80-£120

## Explanation of Catalogue Terms

The forename(s) (or asterisks where not known) and surname of the artist indicates, in our opinion, an original work by the artist named. The initials of the forename(s) and the surname of the artist indicates in our opinion a work of the period of the artist which may be wholly or in part his/her work.

'Attributed to...'	In our opinion probably a work by the artist, but with less certainty as to authorship in whole or part.
'Studio of ...'	In our opinion a work by an unknown artist in the studio of the artist, possibly under the artist's direction.
'Circle of ...'	In our opinion a work of the period, by an unknown artist with the artist's influence.
'Style of ...'	In our opinion a work at a later date, by an unknown artist following the artist's style.
'Follower of ...'	In our opinion a work at a much later date, by an unknown artist following the artist's style.
'Manner of ...'	In our opinion a work at an unknown date, by an unknown artist following the artist's style.
'After ...'	In our opinion a work at a later date, by an unknown artist copying a work of the artist.
'Signed, Dated & Inscribed'	In our opinion the signature, date and inscription are from the hand of the artist.
'Highlighted Signature'	In our opinion the signature is/are from the hand of the artist, in whole or part, that may have been restored.
'Bears a Signature'	In our opinion the signature is not by the artist and has been added by another hand/hands at a later date.
'Oil Painting'	In our opinion is painted in oils or acrylic.
'Mixed Media'	In our opinion a mixture or combination of part, some or all of the following - Oil, Watercolour, Gouache, Pencil, Ink or Print.

**Consign to our 2026 sales**

**No commission or illustration charges  
Just £15 (+VAT) per lot and 1.5% (+VAT)  
loss and damage waiver**



## AUCTION INFORMATION

**BUYER'S FEES** - All purchases are subject to a buyer's premium, which is charged per lot at 25% of the hammer price plus VAT at the current rate of 20% will be added to the buyer's premium of all lots.

**CONDITION REPORTS** - Condition reports can be requested by contacting us at [info@parkerfineartauctions.com](mailto:info@parkerfineartauctions.com) or calling us on 01252 20 30 20. Bidders must satisfy themselves as to the condition of each lot. A Condition Report is an honest expression of our opinion and not a statement of fact and is provided as a service to the Seller. Requests for condition reports must be submitted 24 hours before the start of the sale. The absence of a condition report in this catalogue does not imply there are no imperfections in the works.

**REQUEST FOR IMAGES** - More images can be found in the online catalogue. Requests for additional images of items in the sale can be made up to 24 hours before the start of the sale.

Please note the colours portrayed in the catalogue, and in additional images, are the best attempt at a likeness but cannot be confirmed as identical to the true colours.

**Please note that, owing to the recent introduction of money laundering regulations clients wishing to bid in this auction will be asked to provide two forms of identification. This applies to new and existing clients.**

**ATTENDING THE AUCTION** - If intending to buy you are required to register your name and details at our reception desk on the day of the auction. You will then be allocated a bidding number, which you use when bidding for an item.

**ABSENTEE BIDS** - You can place an absentee bid, and the auctioneer will bid on your behalf to obtain the lot as cheaply as possible as allowed by other bids and reserves. To make an absentee bid you can complete a bidding form at reception, telephone us, or send us your bid by email. You should give us the maximum hammer price you are prepared to pay, remembering to take into account the buyer's premium and any taxes and charges payable on top of the hammer price.

Absentee bids must be submitted by close of business on the day before the sale. If identical bids are submitted, the person who bid first will take precedence.

**TELEPHONE BIDDING** - You can take part in the sale by bidding over the telephone. Telephone lines must be booked by close of business on the day before the sale and are allocated on a first-come-first-served basis.

**ONLINE BIDDING** - Bidding can be done through EasyLive Auctions or the-saleroom.com. Bidding on these sites is directly through the relevant platforms and will incur extra commission charges. Please refer to the individual bidding websites for their individual terms and conditions.

**PAYMENT** - Payment will be accepted, if you are a successful bidder, by bank transfer direct into our bank account, by debit card issued in the name of the Buyer by a UK bank and registered to a UK billing address, by all major UK issued credit cards issued in the name of the Buyer and registered to a UK billing address (up to £1000), or in cash up to £8,000 (subject to relevant money laundering regulations). The name of the bank account holder should match the name of the buyer. Payment may also be made by sterling personal cheques drawn on a UK bank account and made payable to 'Parker Fine Art Auctions Ltd', however Lots paid for by this method cannot be collected until your cheque has cleared. Payment can be made and purchases collected during the auction. All accounts must be settled within 14 days of the sale. Accounts not paid within 14 days will automatically be subject to an interest charge (not exceeding 1.5% per month on the total amount due). Monies from wire transfers and cheques must be cleared into our account for 24 hours before items may be collected.

If the buyer has failed to collect within a period of two months (from sale date), Parker Fine Art Auctions reserve the right to re-enter the uncollected items through auction, to recover the cost of storage and associated costs. At this time the buyer relinquishes all claims to ownership and any right to financial compensation.

**COLLECTION** - Before being able to collect your purchases you are required to pay the hammer price, plus the applicable charges, and obtain a receipt acknowledging payment.

Once payment for lots has been received collection or transportation of purchased lots must be made within 14 days of the sale to avoid storage charges.

We are open for collections Monday – Friday between 9am and 5pm, or by arrangement.

**STORAGE** - Storage charges will be levied on all lots not collected within 14 days of the sale of £5 plus VAT per lot per day.

**DELIVERY** - If you are arranging your own professional collection and delivery, please ensure the lot has been paid for and the transport company has full details of the items to be collected, and we have received an authorisation note.

In some circumstances some very small items may be posted for a fee, but this will be at the Auctioneer's discretion and will be subject to your own Insurance and Liability. Please contact us if you would like details of local shipping companies.

**For Full terms and conditions please go to our website**  
[www.parkerfineartauctions.com](http://www.parkerfineartauctions.com)

## IMPORTANT NOTICES FOR JEWELLERY BUYERS

### DAMAGE, RESTORATION, ALTERATION

Although every effort is made to note any damage, restoration or alterations, the absence of any such information in catalogue descriptions does not imply the lot is in perfect condition and free from any such defects. Potential Bidders should satisfy themselves as to the condition of any lot prior to bidding.

### ENHANCEMENT

Potential bidders should be aware that many coloured gems have been historically treated by a variety of methods to improve their appearance, both in terms of colour and transparency. Rubies and sapphires are routinely heat treated, emeralds are enhanced through the use of coloured and transparent oils and resins, and jadeite is routinely stained. These treatments, and others including irradiation and coating, are generally accepted by the jewellery trade as standard practice. Although most treatments are considered to be permanent, those gemstones which have been oiled may need to be re-treated to maintain their appearance. Any such treatments affect the market value of coloured gemstones, and Parker Fine Art Auctions pre-sale estimates published in the catalogue assume that all gemstones, unless otherwise stated in the catalogue, may have been enhanced. Parker Fine Art Auctions may obtain Gemmological Reports from a recognised laboratory where appropriate detailing any enhancements, or lack of, for certain gemstones, and such reports may be obtained for Potential Bidders prior to the sale, provided such requests are made at least three weeks before the sale, and that the requesting party has prepaid for such a report. However it is not possible for Parker Fine Art Auctions to obtain reports for every stone offered in the sale.

In the absence of a gemmological laboratory report, it is not possible for Parker Fine Art Auctions to make any comment on the possibility that any gemstone in any lot may have been subject to enhancement.

### WEIGHTS

All gram weights have been obtained using an electronic balance, but weights stated in the catalogue are approximate and for guidance only, and potential bidders should satisfy themselves as to their accuracy.

‘...approximately 1.20 carats total,...’ all such stone weights are estimated using standard equipment and formulae, and are subject to the limitations imposed by the mount.

‘...weighing 1.20 carats,...’ where the description reads as such, the stones in question have been removed from the mount and weighted using an electronic balance.

### IMPORTANT NOTICES FOR WATCH BUYERS

All Lots are sold as seen, and the absence of any reference to the condition of a watch does not imply the lot is in good condition and without defects, repairs or restorations. Most watches have been repaired in the course of their normal lifetime and may now incorporate parts not original to them. We do not undertake any inspection of any watches prior to any Sale. We make no representation or warranty that any watch is in working order. As watches often contain fine and complex mechanisms, Potential Bidders should be aware that a general service, change of battery or further repair work, for which they are solely responsible, may be necessary.

### DAMAGE, RESTORATION, ALTERATION

Although every effort is made to note any damage, restoration or alterations, the absence of any such information in catalogue descriptions does not imply the lot is in perfect condition and free from any such defects. Potential Bidders should satisfy themselves as to the condition of any lot prior to bidding. All watches are serviced from time to time, and Parker Fine Art Auctions are unable to guarantee that the working parts of any watch movement, glass or crystal, winding crowns, watch bracelet, strap or buckle are the manufacturers’ original parts, unless otherwise stated in the catalogue description. We are unable to make any representation in our catalogue descriptions or condition reports as to the authenticity of such parts. Parker Fine Art Auctions are unable to make any representation, nor make any comment on, the authenticity of diamonds, or other gemstones, set into watch dials, bezels, cases and bracelets.

### AUTHENTICATION

All watch movements have been inspected by Parker Fine Art Auctions’ specialists, and we have verified all inventory and movement numbers. For the information of Potential Bidders, all inventory and movement numbers are listed in the catalogue description for the relevant lot.

### IMPORT/EXPORT RESTRICTIONS

There may be Import Restrictions into some territories outside the United Kingdom placed on certain watch brands, or on the importation of watches with straps composed of animal skins which may fall under CITES Regulations. It is the sole responsibility of the buyer to comply with all Export/Import regulations and potential bidders are strongly recommended to check with their shipping agent as to any such regulations that may apply to any lot. Parker Fine Art Auctions are not shippers and are unable to offer any advice regarding such regulations.

### CONDITION REPORTS

Parker Fine Art Auctions condition reports will identify whether a watch functions at the time of cataloguing, and suggest possible, but not comprehensive, restoration work that may need to be carried out for the watch to function properly. Parker Fine Art Auctions are unable to test watches for accuracy or running to time, and we cannot guarantee that any watch will function when purchased from us.

As we have examined all watch movements by removing the case backs, we cannot guarantee that water resistant watches will remain water resistant following purchase from us. Parker Fine Art Auctions recommend that any watch purchased from us is subsequently overhauled by a competent watchmaker to ensure proper functioning.

# Conditions of Sale for Public Auctions

Parker Fine Art Auctions Ltd carries out business with Bidders, Buyers and Sellers on the following conditions and on such terms, conditions and notices as may be referred to herein. All Bidders, Buyers and others participating in a public auction accept that these terms apply to the exclusion of any terms and conditions contained in any of those person's own documents even if the same purport to provide that they or some other terms prevail. Any particular public auction and/or any particular lot in an auction may be subject to different or additional terms which will be published in our auction catalogue online.

The Buyer's attention is particularly drawn to clause 24 (consumers) and clause 23 (non-consumers), which set out the extent of the Auctioneer's and the Seller's liability to the Buyer.

Please read these Conditions together with our "Information for Buyers" document, which provides additional information and terms applicable to our auctions.

## 1. DEFINITIONS

In these Conditions:

- (a) "Auction Terms and Conditions" means these Conditions, the Terms of Consignment and any other terms applicable to auctions conducted by the Auctioneer and notified to Buyers, Bidders and/or Sellers (as applicable);
- (b) "Auctioneer", "we", "us" or "our" etc. means the firm of Parker Fine Art Auctions Ltd or its authorised auctioneer, as appropriate;
- (c) "Conditions" means these Conditions of Sale for Public Auctions (which include the terms set out in "Information for Buyers");
- (d) "deliberate forgery" means an imitation made with the intention of deceiving as to authorship, origin, date, age, period, culture or source but which is unequivocally described in the catalogue as being the work of a particular creator and which at the date of the sale had a value materially less than it would have had if it had been in accordance with the description;
- (e) "hammer price" means the level of bidding reached (at or above any reserve) when the auctioneer brings down the hammer;
- (f) "Information for Buyers" means the document named Information for Buyers at Public Auction containing additional terms and information for Buyers available on our website at [www.parkerfineartauctions.com](http://www.parkerfineartauctions.com);
- (g) "Lots" any items or group of items offered for sale by us as agents for the Seller;
- (h) "Seller" means any person that appoints us as their agent to sell Lots on their behalf;
- (i) "Terms of Consignment" means the stipulated terms and rates of commission on which we accept instructions from Sellers or their agents including those terms set out in the document named "Terms of Consignment for Public Auctions" which can be found on our website or are available upon request;
- (j) "Total Amount Due" means the hammer price in respect of the Lot sold together with any premium, Value Added Tax chargeable and any additional charges payable by a defaulting buyer under these Conditions;
- (k) "Sale Proceeds" means the net amount due to the Seller, being the hammer price of the lot sold less commission at the stated rate, Value Added Tax chargeable and any other amounts due to us by the seller in whatever capacity and however arising; "you", "your", etc. refer to the buyer as identified in Clause 3.4;
- (l) The singular includes the plural and vice versa as appropriate; and
- (m) A person includes a natural person, corporate or unincorporated body (whether or not having separate legal personality).

## 2. FORMATION OF CONTRACT

A contract for the sale and purchase of a Lot shall come into existence between the Seller and the Buyer on these Conditions upon acceptance by the Auctioneer of a bid by the Buyer.

## 3. BIDDING PROCEDURES AND THE BUYER

- 3.1 Bidders are required to register their particulars before bidding by completing a sale registration form and to satisfy any security arrangements before entering the auction room to view or bid.
- 3.2 Under the money laundering regulations in force we are required to verify the identity of all customers we transact with as well as any beneficiaries on behalf of whom they may transact. Customers who are unable to or refuse to supply required identification documents and proof of address may not be able to bid at our auctions. Copies of

customer due diligence checks will be stored for as long as it is necessary to satisfy legal requirements in an appropriate storage facility which for the avoidance of doubt may include storage solely in electronic form.

- 3.3 The maker of the highest bid accepted by the auctioneer conducting the sale shall be the buyer at the hammer price and any dispute about a bid shall be settled at the Auctioneer's absolute discretion by reoffering the Lot during the course of the auction or otherwise. The auctioneer shall act reasonably in exercising this discretion. The Auctioneer shall rule the bidding and no bid may be retracted.

- 3.4 The Buyer is the person who is successful in purchasing a Lot or Lots in accordance with these Conditions. Purchases made on behalf of a third party are the responsibility of the Buyer in the room. The Auctioneer reserves the right to bid on behalf of the Seller for any Lot and to withdraw, consolidate or divide any Lot or Lots.

- 3.5 Bidders shall be deemed to act as principals (i.e. not on behalf of or as the agent of any other person).

- 3.6 Our right to bid on behalf of the Seller is expressly reserved up to the amount of any reserve below the bottom estimate and the right to refuse any bid is also reserved.

## 4. INCREMENTS

Bidding increments shall be at the Auctioneer's sole discretion.

## 5. THE PURCHASE PRICE

The purchase price payable for a Lot is the hammer price plus a buyer's premium thereon of 25% plus VAT on the premium at the rate imposed by law and is payable in accordance with clause 7.

## 6. VALUE ADDED TAX.

Value Added Tax on the hammer price is imposed by law on all items affixed with a dagger or double dagger symbol. Value Added Tax is charged at the appropriate rate prevailing by law at the date of sale and is payable by buyers of relevant Lots. (Please refer to "Information for Buyers" for a brief explanation of the VAT position).7.

## PAYMENT

- 7.1 Immediately a Lot is sold you will:

- (a) give to us, if requested, proof of identity, and
- (b) pay to us the total amount due in pounds sterling.

- 7.2 Any payments by you to us may be applied by us towards any sums owing from you to us on any account whatever without regard to any directions of you or your agent, whether expressed or implied.

- 7.3 In order to comply with money laundering regulations we reserve the right to require proof of source of funds and/or confirmation of the nature and source of wealth for all receipts of monies from clients directly or from third parties for payments on behalf of clients. The completion of the sale of a Lot will be postponed or cancelled at our discretion if further time is needed for investigation, or if you are in breach of your warranties as a buyer, or if we consider the sale to be unlawful or in any way cause liabilities or be detrimental to either us or the Seller.

## 8. TITLE AND COLLECTION OF PURCHASES

- 8.1 The ownership of any Lots purchased shall not pass to you until you have made payment in full in cleared funds to us of the total amount due.

- 8.2 You shall at your own risk and expense take away any lots that you have purchased and paid for no later than 14 working days following the day of the auction or upon the clearance of any cheque used for payment after which you shall be responsible for any removal, storage and insurance charges.

- 8.3 No purchase can be claimed or removed until it has been paid for.

## 9. REMEDIES FOR NON-PAYMENT OR FAILURE TO COLLECT PURCHASES

- 9.1 If any Lot is not paid for in full and taken away in accordance with these Conditions, or if there is any other breach of these Conditions, we, as agent for the Seller and on our own behalf, shall at our absolute discretion and without prejudice to any other rights we may have, be entitled to exercise one or more of the following rights and remedies:

- (a) to proceed against you for damages for breach of contract;
- (b) to rescind the sale of that Lot and/or any other Lots sold by us to you;
- (c) to resell the Lot (by auction or private treaty) in which case you shall be responsible for any resulting deficiency in the total amount due (after



- crediting any part payment and adding any resale costs). Any surplus so arising shall belong to the Seller;
- (d) to remove, store and insure the Lot at your expense and, in the case of storage, either at our premises or elsewhere;
  - (e) to charge interest at a rate not exceeding 1.5% per month on the total amount due to the extent it remains unpaid for more than fourteen working days after the sale;
  - (f) to retain that or any other Lot sold to you until you pay the total amount due;
  - (g) to reject or ignore bids from you or your agent at future auctions or to impose conditions before any such bids shall be accepted; or
  - (h) to apply any proceeds of sale of other Lots due or in future becoming due to you towards the settlement of the total amount due and to exercise a lien (that is a right to retain possession of) over any of your property in our possession for any purpose until the debt due is satisfied.
- 9.2 We shall, as agent for the Seller and on our own behalf pursue these rights and remedies only so far as is reasonable to make appropriate recovery in respect of breach of these Conditions
- 10. THIRD PARTY LIABILITY**
- 10.1 All bidders, buyers and other members of the public on our premises are there at their own risk and must note the lay-out of the accommodation and security arrangements. Accordingly neither the auctioneer nor our employees or agents shall incur liability for death or personal injury or for the safety of the property of persons visiting prior to or at a sale (except in each case as may be required by law by reason of our negligence)
- 11. COMMISSION BIDS**
- 11.1 Whilst prospective buyers are strongly advised to attend the auction and are always responsible for any decision to bid for a particular Lot and shall be assumed to have carefully inspected and satisfied themselves as to its condition and authenticity, we will if so instructed clearly and in writing execute bids on their behalf. Neither the auctioneer nor our employees or agents shall be responsible for any failure to do so.
- 11.2 Where two or more commission bids at the same level are recorded we reserve the right in our absolute discretion to prefer the first bid so made.
- 12. WARRANTY OF TITLE AND AVAILABILITY**
- 12.1 The Seller warrants to the auctioneer and you that the Seller is the true owner of the property consigned or is properly authorised by the true owner to consign for sale and is able to transfer good and marketable title to the property free from any third party claims.
- 12.2 We are acting as the agent of the Seller only and give no warranty as to the Seller's title to the Lot.
- 12.3 Save as expressly set out above, all other warranties, conditions or other terms which might have effect between the Seller and you, or us and you, or be implied or incorporated by statute, common law or otherwise are excluded to the fullest extent permitted by law.
- 13. TERMS OF SALE**
- The Seller and the Buyer acknowledge that Lots are sold subject to the stipulations of these Conditions (including the Information For Buyers) in their entirety and on the Terms of Consignment as notified to the Seller at the time of the entry of the Lot.
- 14. DESCRIPTIONS AND CONDITION**
- 14.1 Whilst we seek to describe Lots accurately, it may be impractical for us to carry out exhaustive due diligence on each Lot. Bidders are given ample opportunities to view and inspect before any sale and they (and any independent experts on their behalf) must satisfy themselves as to the accuracy of any description applied to a Lot. Bidders also bid on the understanding that, inevitably, representations or statements by us as to authorship, genuineness, origin, date, age, provenance, condition or estimated selling price involve matters of opinion. We undertake that any such opinion shall be honestly and reasonably held and accept liability for opinions given negligently or fraudulently.
- 14.2 Subject to the foregoing neither we the auctioneer nor our employees or agents nor the Seller accept liability for the correctness of such opinions and all conditions, attributions and warranties, whether relating to description, condition or quality of lots, express, implied or statutory, are hereby excluded.
- 14.3 We are not liable for damage to gilded picture frames, plaster picture frames or picture frame glass. If the Lot is, or becomes dangerous, we may dispose of it without notice to you in advance in any manner we see fit and will be under no liability for doing so. We shall not be liable for any damage to any Lot arising during the viewing, during the sale, or after the sale.
- 14.4 We act as agents only. Each Prospective Buyer by making a bid for a Lot acknowledges that they have satisfied themselves fully as to the attribution and condition of the Lot. Pictures have not been removed from their frames unless specifically mentioned in the Condition Report (as in the event the item is unsold it must be returned to the Seller in the condition it was received by us). This Condition is subject to deliberate forgeries (clause 17).
- 14.5 Private treaty sales made under these Conditions are deemed to be sales by auction for purposes of consumer legislation.
- 15. TRANSFER OF RISK.**
- 15.1 The risk in the Lot shall pass to the Buyer upon completion of the Sale by the Auctioneer.
- 15.2 We are not responsible for the correct description, genuineness or authenticity of any Lot as per these Conditions. The Buyer is deemed to have inspected each Lot and satisfied himself/herself to the condition.
- 16. OWNERSHIP OF THE LOT**
- Title to the Lot purchased will not pass to the Buyer until the Buyer has paid us in full and cleared funds the total amount due pursuant to these Conditions and we have applied such payment to the Lot.
- 17. FORGERIES**
- 17.1 Notwithstanding the preceding Condition, any Lot which proves to be a deliberate forgery (as defined) may be returned to us by you within 21 days of the auction provided it is in the same condition as when bought, and is accompanied by particulars identifying it from the relevant catalogue description and a written statement of defects. If we are satisfied from the evidence presented that the Lot is a deliberate forgery we shall refund the money paid by you for the Lot including any buyer's premium unless:
- (a) the catalogue description reflected the accepted view of scholars and experts as at the date of sale; or
  - (b) you personally are not able to transfer a good and marketable title to us,
- and in the event of clause 17.1 (a) or 17.1 (b) applying you shall have no rights under this condition.
- 17.2 The right of return provided by this clause 17 is additional to any right or remedy provided by law or by these Conditions.
- 18. PRIVACY NOTICE.**
- We will hold and process any personal data in relation to you in accordance with our current privacy policy, a copy of which is available on our website [parkerfineartauctions.com](http://parkerfineartauctions.com)
- 19. GENERAL**
- 19.1 We shall have the right, at our discretion, to refuse admission to our premises or attendance at our auctions by any person.
- 19.2 Any right to compensation for losses liabilities and expenses incurred in respect of and as a result of any breach of these Conditions and any exclusions provided by them shall be available to the Seller and/or the Auctioneer as appropriate.
- 19.3 Such rights and exclusions shall extend to and be deemed to be for the benefit of employees and agents of the Seller and/or the auctioneer who may themselves enforce them.
- 19.4 Special terms may be used in catalogue descriptions of particular classes of items in which case the descriptions must be interpreted in accordance with any glossary appearing in the catalogue.
- 20. NOTICES**
- Any notice to any buyer, seller, bidder or viewer may be given by first class mail or email in which case it shall be deemed to have been received by the addressee 48 hours after posting or in the event of email upon actual receipt of such email.

21. **NO WAIVER**  
Any indulgence extended to bidders, buyers or sellers by us notwithstanding the strict terms of these Conditions or of the Terms of Consignment shall affect the position at the relevant time only and in respect of that particular concession only; in all other respects these Conditions shall be construed as having full force and effect.
22. **LIABILITY**  
Nothing in these Conditions shall limit any liability which cannot legally be limited, including liability for:  
(a) death or personal injury caused by negligence;  
(b) fraud or fraudulent misrepresentation;  
(c) breach of the terms implied by section 12 of the Supply of Goods Act 1979 (title and quiet possession) however attention is drawn to clause 12.2.
23. **LIMITATION OF LIABILITY TO NON-CONSUMERS**  
(This clause 23 applies only to non-Consumers)
- 23.1 Subject to clause 22, and unless you are an individual purchasing or selling the Lot for purposes which are wholly or mainly outside your trade, business, craft or profession (**Consumer**), our total liability to either the Buyer of the Seller (as appropriate) shall not exceed the value of the Lot sold by the Seller to the Buyer. The following types of loss are wholly excluded by us:  
(a) loss of profits;  
(b) loss of sales or business;  
(c) loss of agreements or contracts;  
(d) loss of anticipated savings;  
(e) loss of or damage to goodwill, and  
(f) indirect or consequential loss.
- 23.2 Subject to clause 22, all conditions, warranties and other terms which might otherwise be implied by statute, common law or the law of equity, including without limitation the terms implied by sections 13 to 15 of the Sale of Goods Act 1979, are, to the fullest extent permitted by law, expressly excluded.
- 24.1 **LIMITATION OF LIABILITY TO CONSUMERS**  
(This clause 24 applies only to Consumers)
- 24.1 Consumers are reminded that we act only as an agent of the Seller and are not the supplier of the Lots.
- 24.2 If the Auctioneer or the Seller fails to comply with these Conditions, it or they shall be responsible for loss or damage you suffer that is a foreseeable result of its or their breach of these Conditions or its or their negligence, but neither the Auctioneer nor the Seller shall be responsible for any loss or damage that is not foreseeable. Loss or damage is foreseeable if they were an obvious consequence of the breach or if they were contemplated by the Agent and/or the Seller and the Buyer at the time this contract was entered into.
25. **RIGHT TO CANCEL**
- 25.1 If you purchase a Lot at a virtual auction (an auction which is held online only so that there is no possibility for you to attend the auction in person) and you are contracting as a Consumer and the Seller of a Lot is a trader, you will have a statutory right to cancel your purchase of that Lot if you change your mind for any reason. The provisions below set out your legal right to cancel in those circumstances.
- 25.2 You may cancel your purchase at any time from the date of our order confirmation up to the end of the fourteenth day after the day of collection of the lot by you or the person specified by you for collection.
- 25.3 To cancel your purchase, you must inform us of your intention to cancel it. You can do this by completing the model cancellation form which can be found on our website. If you use this method we will email you to confirm that we have received your cancellation. Alternatively, you send us your cancellation notice by any other method and then your cancellation is effective from the date you send us the email or post the letter to us.
- 25.4 If you exercise your right to cancel your purchase, you will receive a refund of the total amount due paid for the Lot in accordance with clause 7. When exercising the cancellation right, you must return the lots to us immediately at your own cost (as set out below).
- 25.5 You are entitled to a reasonable opportunity to inspect the Lots (which will include removing them from their packaging and inspecting them). At all times, you must take reasonable care of the Lots and must not let them out of your possession. They must remain in original, untouched condition. If you are in breach of your obligations to take reasonable care of the Lots in this clause 25.4, we will have a claim against you and may deduct from the refund costs incurred by us as a result of the breach.
- 25.6 This provision does not affect your statutory rights.
- 25.7 The cancellation right described in this clause 25 is in addition to any other right that you might have to reject a Lot, for instance because it is a deliberate forgery as set out in clause 17 above.
26. **EXERCISING THE RIGHT TO CANCEL**
- 26.1 Where you have validly returned a Lot to us under your right of cancellation described in clause 25, we will refund the full amount paid by you for the Lot.
- 26.2 Please note that we are permitted by law to reduce your refund to reflect any reduction in the value of the Lot, if this has been caused by your handling of the Lot in a way contrary to the conditions specified in these terms or which would not be permitted during a pre-sale exhibition held prior to an auction. If we refund you the price paid before we are able to inspect the Lot and later discover you have handled the Lot in an unacceptable way, you must pay us an appropriate amount.
- 26.3 You will be responsible for returning the Lot to us at your own cost.
- 26.4 We will process any refund due to you within the deadlines below:  
(a) if you have collected the Lot but have not returned it to us: fourteen days after the day on which we receive the Lot back from you or, if earlier, the day on which you provide us with evidence that you have sent the Lot back to us; or  
(a) if you have not collected the Lot or you have already returned the Lot to us: 14 days after you inform us of your decision to cancel your contract.
- 26.5 We will refund you using the same means of payment that you used for the transaction.
- 26.6 Legal ownership of a Lot will immediately revert to the Seller if we refund any such payment to you.
- 27.1 **DISPUTES**  
Any dispute not herein provided for shall be settled at the sole discretion of the Auctioneer.
28. **FORCE MAJEURE**  
We shall not be in breach of these Conditions nor liable for the delay in performing, or failure to perform, our obligations under these Conditions (or otherwise) if such a delay or failure results from events, circumstances or causes beyond our reasonable control.
29. **ENTIRE AGREEMENT**  
These Conditions constitute the entire agreement between the parties and supersede and extinguish all previous agreements, promises, assurances warranties representations and understandings between them, whether written or oral, relating to its subject matter. Except as set out in these Conditions, no variation of these Conditions shall be effective unless it is in writing and signed by the parties (or their authorised representative).
30. **IMAGES**  
Prior written consent must be sought by the buyer or any other party for the use of any images, illustrations and written materials produced by or for Parker Fine Art Auctions Ltd relating to a lot or sale, including the contents of a catalogue. Copyright for any of the aforementioned will remain the property of Parker Fine Art Auctions Ltd, subject to the provisions of the Copyright, Design and Patents Act 1988. Parker Fine Art Auctions Ltd and the seller make no representations or warranties that the buyer of a lot will acquire any copyright to other reproduction rights to it.
31. **GOVERNING LAW AND JURISDICTION**  
These Conditions shall be governed by and construed in accordance with English law and the parties irrevocably submit to the exclusive jurisdiction of the English courts.



**PARKER**  
FINE ART AUCTIONS  
Hawthorn House | East Street | Farnham | Surrey | GU9 7SX  
Thursday 8th January 2026  
01252 20 30 20  
[info@parkerfineartauctions.com](mailto:info@parkerfineartauctions.com)  
[parkerfineartauctions.com](http://parkerfineartauctions.com)

